



#FindYourPark



Welcome to Obed Wild and Scenic River. Spring and summer are two fabulous seasons to visit, and to take advantage of all that Obed has to offer. Whitewater paddlers are most active in the spring, as March rainfall brings about optimum water levels throughout the Obed's 45 miles of rivers and streams. Gazing at wildflowers, such as red trillium and lance-leaved goldenrods throughout the park's 5,000 acres is another popular activity in spring. Recreational activities, such as rock climbing, hiking, bird watching and camping reach their peak during this special time of year.

The Obed River has carved spectacular gorges in the sandstone bluffs over millions of years, and over 400 named climbing routes are the result of nature's handiwork. Rock climbers from all over the country, and beyond, can be seen every week during these warmer months, testing their climbing skills on cliffs that vary in difficulty from 5.7 to 5.13, and on boulders, where a strong grip and nimble feet are the most common denominators.

This news guide is provided to help you make the most of your stay, whether it is for an hour, a day, or a week. Enjoyable activities are listed within, as are important news and notifications, rules, and timely tips to help you see as much of the park in your available time. If you are making your first visit to Obed Wild and Scenic River, you will definitely want to view the Lilly Bluff Overlook. If you have more time, a hike along the park's Point Trail will be a welcomed respite from traffic congestion. For people who enjoy fishing, the streams of the park include fish, such as bass, bluegill, and catfish. For those who only have under an hour, stopping by the Obed Visitor Center to view the award-winning orientation film is an excellent option.

If you have more questions about the park and its resources, feel free to chat with a park ranger at the Obed Visitor Center. They are looking forward to helping you #FindYourPark.



Rock climber enjoying the park



Spicebush Blossum

Welcome to Obed Wild & Scenic River!

The year 2016 is a very special year for Obed Wild and Scenic River, and for the National Park Service. Obed WSR is celebrating its 40th birthday, and the NPS is celebrating its Centennial.

Both anniversaries provide opportunities to introduce the National Park Service to a next generation of visitors, supporters and advocates, to engage further with visitors who already know and love parks, and to reflect on the vast network of public lands and protected places set aside for all Americans.

Both milestones are noteworthy, and within those years, the stories and experiences of the Obed, and of the more than 400 units of the National Park System are told by millions. At Obed, stories come from rock climbers, who are drawn to our renowned sandstone cliffs, from kayakers who paddle the Class II to Class IV rapids, from a multitude of visitors, who hike our trails, from amateur photographers who participate in our annual photo contest, from bird watchers to wildflower enthusiasts, and from the pre-planned vacationers, to travelers who discover the park by "happy accident." This park truly has something for everyone.

This year, we encourage you to redefine what the word "park" means for you, and I invite you to find YOUR Obed, and share your experiences on your favorite social media site and tag #FindYourPark and #EveryKidinaPark. Read about other visitors' experiences at various parks across the nation. Maybe their connections will encourage you to discover a new place!

Niki Stephanie Nicholas
Superintendent

4 Park Map

This map shows how to get to the most popular points of interest in our park.

6 Walks and Talks Schedule

Find out when the next ranger program will take place and join us.

7 Hey Ranger!

See what the commonly asked questions are for the park. See if your questions are answered here.





National Park Service
U.S. Department of the Interior

Obed Wild and Scenic River

Mailing Address

PO Box 429
Wartburg, TN 37887

E-mail

obri_information@nps.gov

Park Headquarters

423-346-6294



STAY CONNECTED WITH US

Follow us on Twitter

@ObedWSR

Like us on Facebook as

ObedWSR

Subscribe to our YouTube channel at

Obed Wild & Scenic River

Visit our website at

www.nps.gov/obed

The National Park Service cares for the special places saved by the American people so that all may experience our heritage.



WiFi is available at the Visitor Center.



Events Calendar

All events are Eastern Time. All interpretive programs are subject to change. Contact Obed Wild and Scenic River Visitor Center at (423) 346-6294 for program details.

NATIONAL RIVER CLEANUP DAY AND VOLUNTEER LUNCH

Join us on Saturday, May 14, 2016 for this annual event. Volunteers, scouting groups, and whitewater paddling groups team up to clean up all access to the park. Following the cleanup, a picnic lunch at the Obed Visitor Center is provided to all volunteers.

ASTRONOMY/DARK SKIES PROGRAM

Constantly changing East Tennessee weather prevails opportunities for short notice programs calibrating the wonders of the heavens and the value of the park's dark skies. Like us on Facebook or follow us on Twitter for details.

ANNUAL PHOTO CONTEST

Photographers are invited to submit entries for the fourth annual photography exhibit at the Obed Wild and Scenic River Visitor Center. The NPS is looking for striking digital images in one of five categories: action/adventure, artistic, flora/fauna, landscapes, and youth (17 and under). Photos must be submitted by July 15, 2016. Gala award celebration will occur on August 25, 2016. Submission information and rules and regulations can be found at <http://www.nps.gov/obed/learn/photosmultimedia/obed-photo-contest.htm>.

MEMORIES OF THE OBED

This free periodic program is held inside the Obed Visitor Center, located at 208 North Maiden Street in downtown Wartburg, and is part of a series program that explores the unique river-related memories of local individuals. A different speaker shares their memories of life in the vicinity of the river.

HEALTHY HIKES

In celebration of the National Park Service's Centennial year, the Obed Healthy Hikes provide the public with ranger-led activities that allow park visitors the opportunity to further discover our national parks. Check with the Obed Visitor Center for upcoming dates and times.

PRIMITIVE BOW/WEAPONRY WORKSHOPS

The Obed Wild and Scenic River, in partnership with bowyer Travis Gosnell, hosts a primitive bow workshop each month. Visitors who attend the primitive bow workshop will have the opportunity to help in the process of building a primitive bow and ask Travis questions about other primitive weapons.

COFFEE AND CLIMB WITH A RANGER PROGRAM

On the first Saturday of each month, the Climb with a Ranger program introduces rock climbing to individuals who have always wanted to try the activity but who did not know where to begin. All necessary gear is provided. Depending on interests and ability levels, participants will travel with rangers to one of several different climbing areas around the park. Would be rock climbers of all ages are encouraged to attend. These programs will be held regardless of weather conditions. Attend one program or both. No reservations are necessary for these free events.

OBED PRESCHOOL STORY TIME

The Obed Wild and Scenic River hosts a preschool story time event every Friday morning, beginning at 10:30 a.m. (ET). Story time lasts for about 30 minutes. All preschool children (and their parents or guardians) are invited to attend. Children are encouraged to bring their favorite book to be read by a ranger and a pillow or blanket if desired. This is a free event, and no reservations are required.

ADOPT-A-CRAG

This annual event will occur on September 10, 2016 this year. Climbers and any interested volunteers help to pick up trash and do trail maintenance work around the park.

Become A Junior Ranger



Obed WSR has a Junior Ranger book and a cool cloth patch for you to earn for your jacket or book bag. Kids from age 4 to 12 are invited to use this book to explore Obed with Obediah, the Owl. Many activities will help you learn about animals, plants, rocks, and rivers.

Become A Volunteer

For information on how you can become a National Park Service volunteer, contact Volunteer Coordinator, Veronica Greear, at (423) 346-6294, or email us at obri_information@nps.gov. Visit us online at <http://www.nps.gov/obed/getinvolved/workwithus.htm> to see all of the wonderful opportunities that are available.



Fee Free Days at Obed

On a variety of holidays, as well as the annual "National Park Week," entrance fees are waived at all National Parks. Learn more about fee free days in the national parks at <http://www.nps.gov/findapark/feefreeparks.htm>.

Although Obed does not collect entrance fees, we do have user fees. During Fee Free Days, the park waives camping fees at Rock Creek Campground.

The following dates are the remaining official fee free days of 2016:

April 16-24 - National Park Week

August 25-28 - National Park Service Birthday Weekend

September 24 - National Public Lands Day

November 11 - Veteran's Day



Attention All 4th Graders!

If you are 10 years old or in fourth grade, you can participate in a fun online activity and receive a voucher for a free 4th Grade Annual Pass. Print out the voucher and take it with you and your family to a national park, where you can serve as an ambassador and introduce your family to the National Park System. This program, called **Every Kid in a Park**, begins September 1, 2015, and runs until August 30, 2016. National parks and other federal lands and waters all across America are excited to share their heritage with young people.



Having a race or getting married?



Special events in the park such as river races or weddings require a special use permit. If you need more information about how to obtain a special use permit, contact the Fee Program Manager, Letitia Neal at 423-569-2404 ext. 240 or by email at tish_neal@nps.gov. Information can also be found on our website at <http://www.nps.gov/obed/planyourvisit/special-use-permits.htm>.

User Fees of Obed Wild and Scenic River

CAMPING FEES

ROCK CREEK CAMPGROUND
ALL SITES 11 SITES
\$7 PER NIGHT (8 PERSON MAX.)*



PERMITS

HOG PERMITS \$5.00*/PERSON

PASSES

INTERAGENCY SENIOR PASS (Ages 62+)
\$10.00 ONE TIME FEE

INTERAGENCY ACCESS PASS
FREE WITH PROOF OF DISABILITY

INTERAGENCY PARK PASS
\$80.00

INTERAGENCY MILITARY PASS
FREE WITH PROOF OF ACTIVE MILITARY DUTY

GET YOUR INTERAGENCY PASS ONLINE AT store.usgs.gov/pass/index.html or at one of our visitor centers.

*Holders of the Interagency Golden Age/Access Passports pay only half the fee.



CONCESSIONAIRE

Eastern National
Bookstore
(423) 346-6295
www.eparks.com/store

PERMITTED OUTFITTER

Ace Kayaking School
River Guide
2368 Old Federal Rd
Ocoee, TN 37361
423-716-7666
acekayaking@gmail.com
www.acekayaking.com

LOST AND FOUND

Report any lost items to rangers at the Obed Visitor Center located at 208 North Maiden Street in downtown Wartburg, Tennessee. Found items should be turned in at this location as well.

Pets

Pets are allowed within the park. However, in order to protect your pet and the park's wildlife, all pets must be kept on a leash (no longer than 6 feet) at all times even if you have your dog with you when riding a horse. Be sure to clean up after your pet.

Before coming to the park make sure your pet is up to date on all vaccinations including rabies. Pets should have identification and rabies tags on their collars. Make sure you check for ticks on you and your pet after visiting the park.

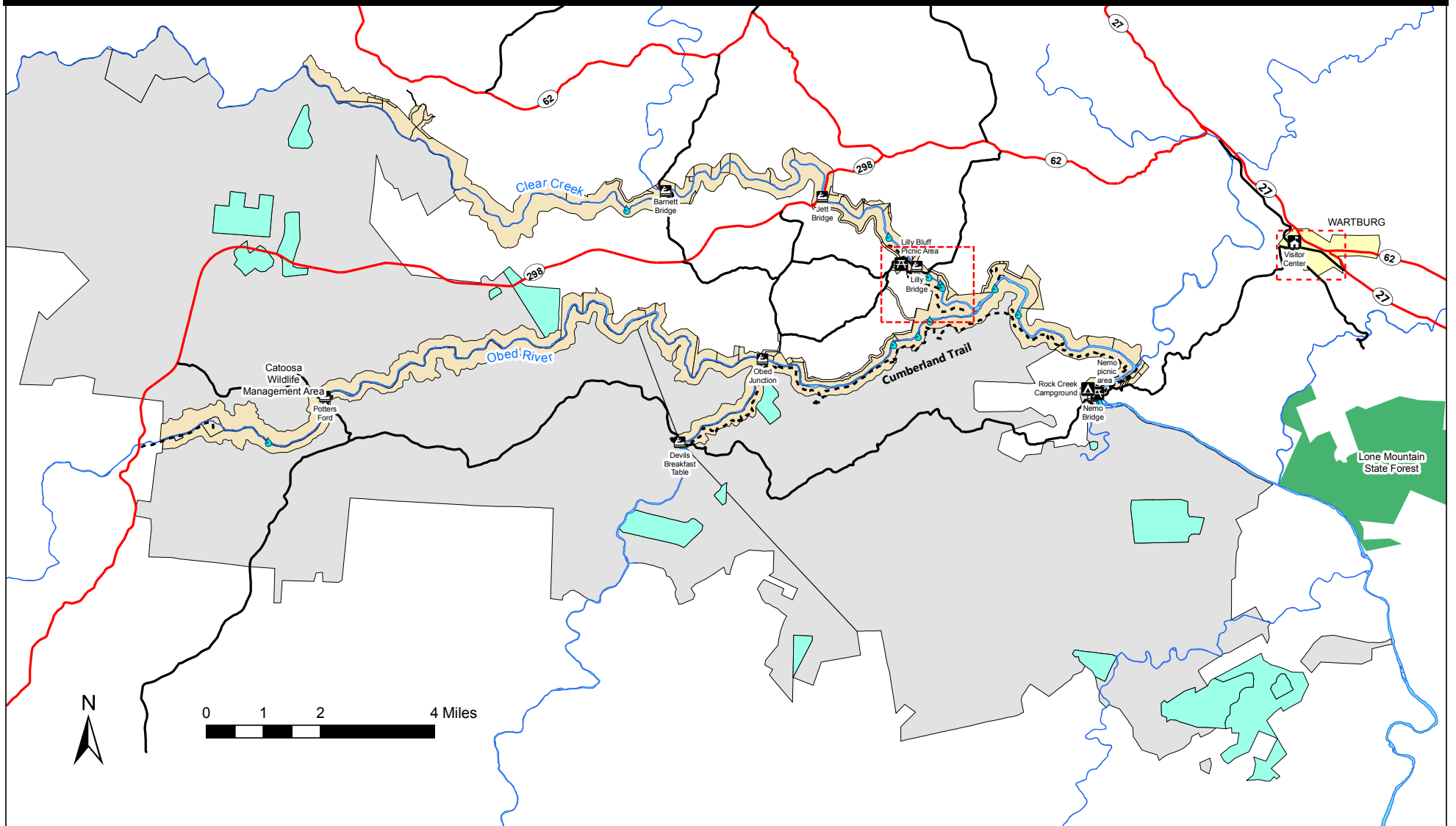


BACKCOUNTRY PERMITS

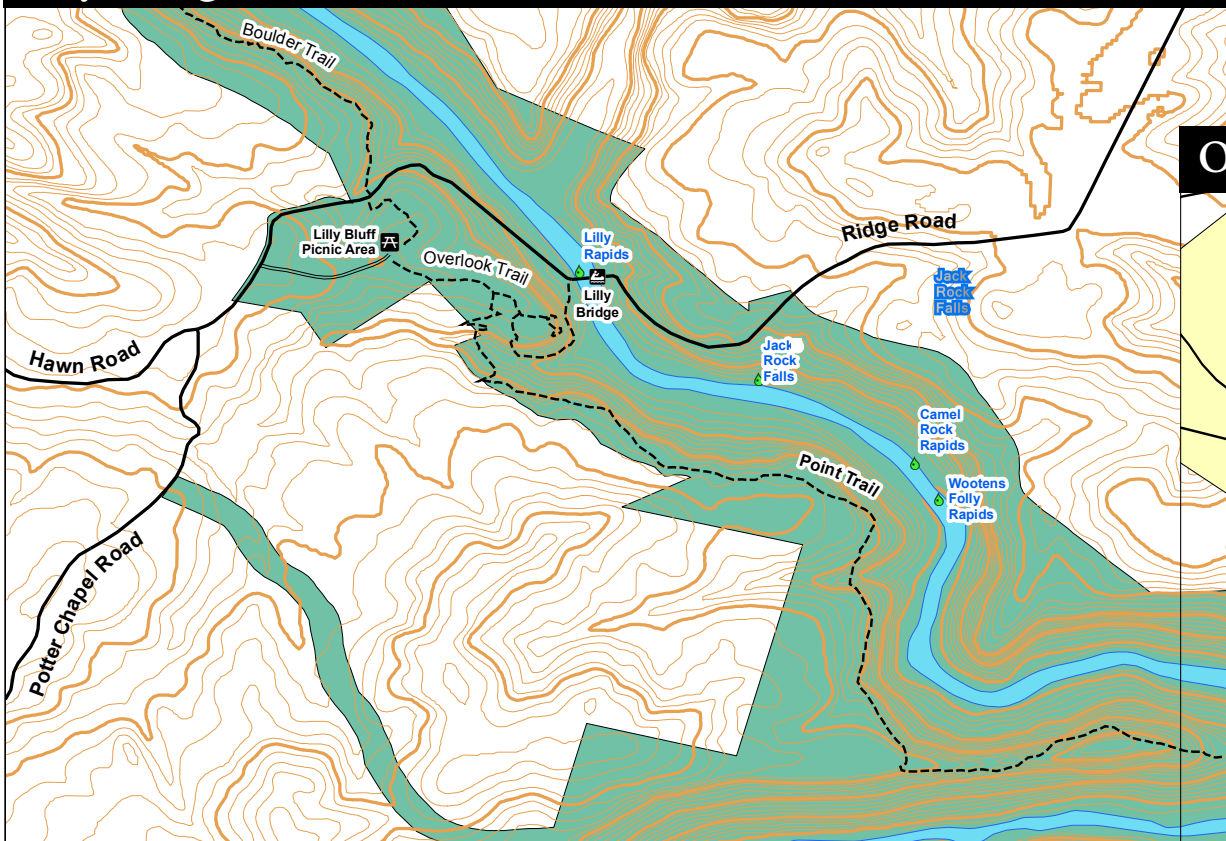
Anyone planning to camp overnight in the backcountry must obtain a free backcountry permit. A permit can be obtained at the Obed Visitor Center or you may download the form online by scanning the QR code here (<http://www.nps.gov/obed/planyourvisit/upload/OBRI-Backcountry-Use-Permit.pdf>).



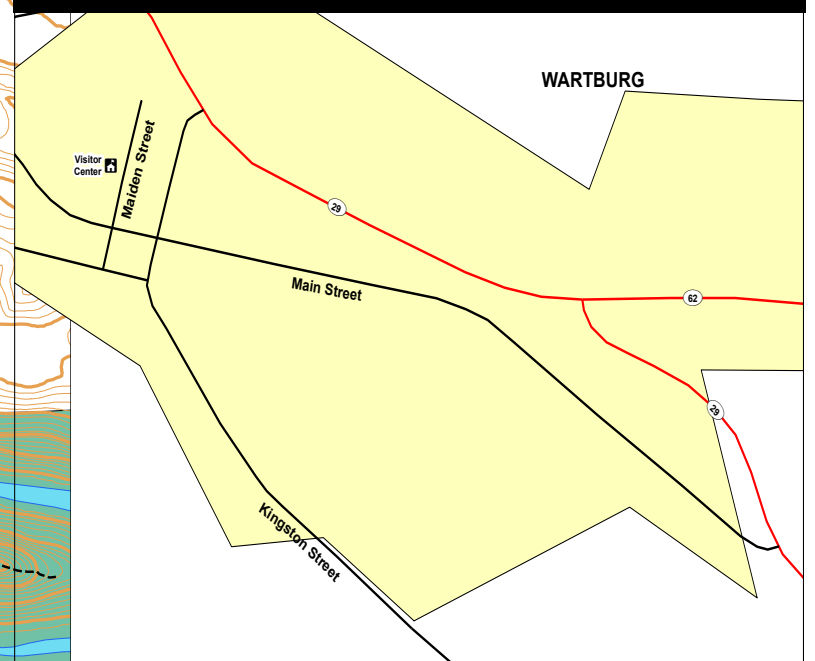
Obed Wild and Scenic River



Lilly Bridge Area



Obed WSR Visitor Center



Hiking Trails of the Obed

	Trail Name	Rating	Distance	Time	Description
1	Point Trail	Moderate	1.9 miles	2 hours round trip	This trail culminates on the narrow, exposed ridge that separates the Obed River from Clear Creek before the two flow together.
2	Bridge Trail	Moderate	.3 mile	15-20 minutes	This trail follows steep terrain from Lilly Bridge to the Overlook Trail.
3	Overlook Trail	Easy	.3 mile	10 minutes	Flat stroll through Hemlock forest to a great overlook of the Clear Creek Gorge.
4	Boulder Field Trail	Easy/Moderate	.2 mile	10 minutes	Trail leaves the Lilly Bluff Overlook parking area and winds through huge boulders and impressive stands of Hemlock.
5	Nature Loop	Moderate	1 mile round trip	30 minutes	Trail leaves from Rock Creek parking area and follows the Cumberland Trail to loop back to parking area. Portions of this trail follow the river.
6	Alley Ford	Moderate/Difficult	2.6 miles	2 1/2 hours	Trail follows the Cumberland Trail to an old popular river ford site.
7	Devil's Breakfast Table - Rock Creek	Difficult	14.2 miles	8 hours minimum	This trail passes through rugged terrain and offers numerous overlooks of the river canyon. Large portions of this trail are within the Catoosa Wildlife Management Area and are subject to periodic closures
8	Nemo to Warburg/CT Trail	Moderate	2.6 miles round trip	1 hour	This section of the Cumberland Trail starts at Historic Nemo Bridge and follows the Emory River upstream to the confluence of the Emory and Obed rivers.

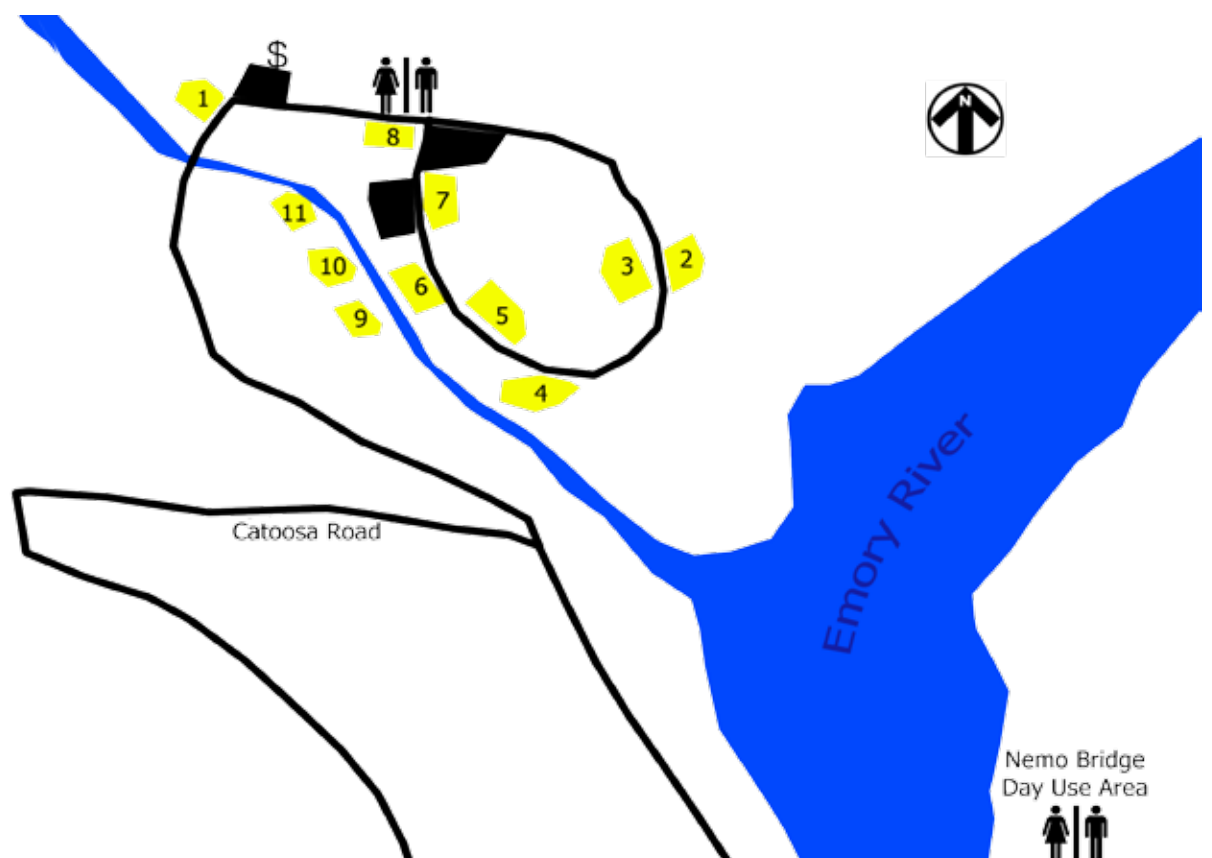
Our Park Campground



ROCK CREEK CAMPGROUND

Rock Creek is a primitive campground open year-round and offers eleven campsites at \$7.00 per night. There is a newly updated vault toilet facility as well as food storage lockers and wildlife-proof garbage cans throughout the campground to use. No drinking water is located at this area. For more information, call (423) 346-6294.

Experience all that Obed has to offer by staying a while.



Guided Walks and Talks

Schedules are effective from Memorial Day Weekend until Labor Day 2016.



PROGRAM TITLE	LOCATION	DURATION	SUN	MON	TUE	WED	THU	FRI	SAT
Children's Program This ranger led program will include activities such as: Wildlife of the Obed, Creatures of the Night, Storytime, Insect Discovery, and much more. Meet at the Obed Visitor Center. Children of all ages are encouraged to participate.	Obed Visitor Center	30 minutes							10:30 AM
Coffee with a Ranger The first Saturday of every month meet at Lilly Bridge at 10 a.m. Bring any questions you may have and come have a free cup of coffee with a National Park Service ranger.	Lilly Bridge	30 minutes							10:00 AM
Climb with a Ranger - Kids Only The first Saturday of every month meet at Lilly Bridge at 11 a.m. This program is for kids ages 12 and under. The park will provide all of the gear. Children must be accompanied by an adult.	Lilly Bridge	1 hour							11:00 AM First Saturday of each month.
Climb with a Ranger The first Saturday of every month meet at Lilly Bridge at 12 p.m. The park will provide all of the gear. All that you need to bring is drinking water, sturdy footwear, a willingness to try new things and a can-do attitude. Depending on participant interests and ability levels, we will travel to one of several different climbing areas around the park and will have participants back to their vehicles by approximately 3 p.m. (ET). Event is held regardless of most weather conditions.	Lilly Bridge	3 hours							12:00 PM First Saturday of each month.

Additional interpretative programs will be presented throughout the summer. Please inquire at the visitor center about other programs offered during this week.

KNOW BEFORE YOU GO

All programs are free. Above programs schedule is effective from Memorial Day weekend until Labor Day.

Wear sturdy walking shoes for hikes. You may also want to bring along bug spray and drinking water.

All children must be accompanied by a parent or guardian at all times.

Programs may be cancelled due to extreme weather conditions.

Black bears and other wildlife frequent the area; visitors must follow food and garbage storage regulations.

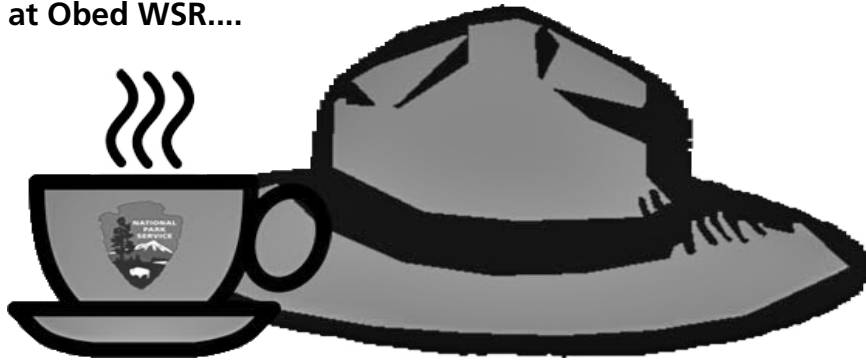
Pets must be restrained on a leash at all times. Owners are expected to clean up pet waste and dispose of it properly.

Inquire at the Visitor Center about other programs offered during the week.



Hey Ranger!

Most commonly asked questions at Obed WSR....



How much does it cost to visit the Obed?

The Obed is free to all visitors year round. For those wishing to camp overnight at the Rock Creek Campground, the fee is \$7 per night and is payable at the campground. The campground is run on a first-come, first-served arrangement. No reservations are needed.

Is backcountry camping allowed in the park?

Yes. A free backcountry camping permit is required and can be obtained at the Obed Visitor Center or online. See page 3 for more information.

How often is the Climb with a Ranger Program?

The Climb with a Ranger Program takes place on the first Saturday of each month. Contact the Visitor Center for more details.

What type of fish can be caught at the Obed?

Smallmouth and Largemouth Bass, Bluegills, Catfish, and even an occasional Muskie can be caught at the Obed.

What is the best time of year to see the Obed?

You can find something of interest every time of the year. However, many people come during the spring to kayak the river. Many others come during the fall to view the wide variety of leaves changing colors. Avid campers populate our Rock Creek Campground most often during the summer months.

What type of license does one need to fish at the Obed?

A Tennessee fishing license is all that is required.

Can I bring my dog to the Obed?

Certainly. However, all pets must remain on a leash of no more than six feet in length. Never leave your pet unattended.

Where is the Obed Visitor Center located?

The Obed Visitor Center is located at 208 N. Maiden Street in downtown Wartburg, Tennessee. It is open from 9 a.m. to 5 p.m. ET daily.

Are there any handicap accessible trails?

Besides our fully accessible visitor center, the Lilly Bluff Overlook Trail is on level ground and is handicap accessible.

Where are the recycle bins located?

They can be found at the Obed Visitor Center, Rock Creek Campground, Nemo Day Use Area, and the Lilly Bluff Parking Lot.

How many rock climbing routes does the Obed have?

The Obed currently has almost 400 different rock climbing routes, ranging from sport and traditional climbing to bouldering.

Do you have a park movie?

Yes. The Obed park movie is shown upon request inside the Obed Visitor Center. It is about 15 minutes long.

Are there restroom facilities in the park?

Yes. Restroom facilities can be found at the Nemo, Lilly Bridge, Lilly Bluff, Jett, and Barnett sections of the park.

Are there any river outfitters?

Yes. Refer to page 3 under permitted outfitters for more information.

What classification of rapids are available at the Obed?

The various sections of the Obed WSR run from a Class II to a Class IV rapid. The sections include Clear Creek, Daddys Creek, the Emory River, and the Obed River.

Where can I enjoy a picnic lunch at the Obed?

Many people picnic at the Nemo section of the park, where picnic tables and small grilling stations are located. Still others enjoy taking a bag lunch to Lilly Bluff and enjoying the scenery at the Overlook while eating.

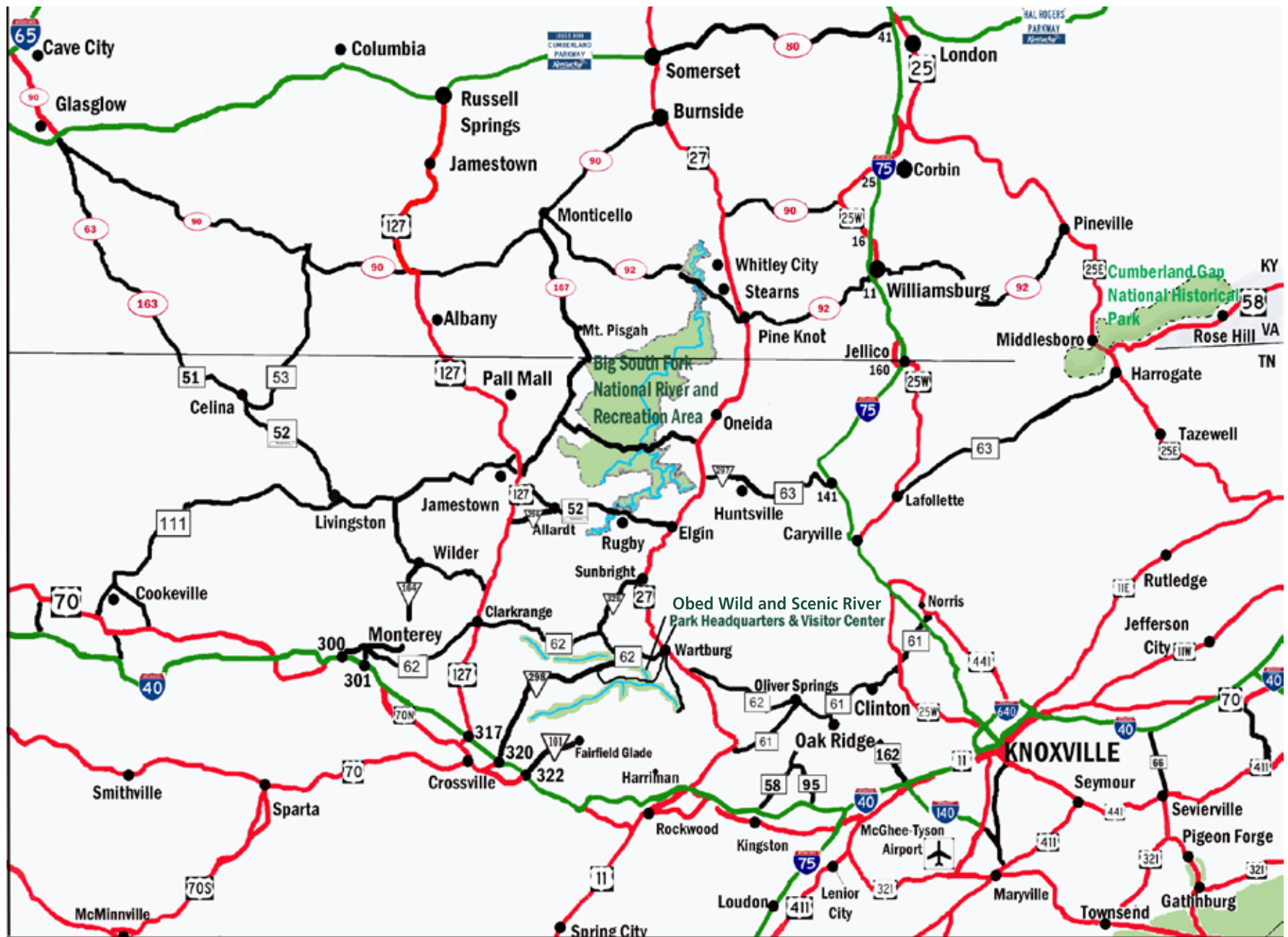
Where are your hiking trails located?

Most of Obed's hiking trails are located at the Lilly Bluff section of the park. They include the Overlook Trail, the Point Trail, the Bridge Trail, and the Boulder Trail. Several trails can also be found at the Nemo section of the park. They include the Emory River Nature Trail, and our section of the Cumberland Trail.



National Park Service
U.S. Department of the Interior

Obed Wild and Scenic River
PO Box 429
Wartburg, TN 37841



Obed Wild and Scenic River

PO Box 428
208 N. Maiden Street
Wartburg, TN
(423) 346-6294
9:00 a.m. to 5:00 p.m. ET daily.
Open daily.

Crossville Visitor Center

176 River Otter Drive
Crossville, TN 38571
(931) 787-1755
Memorial Day through Labor Day
9:00 a.m. to 5:00 p.m. CT
Saturdays and Sundays



SCAN THIS CODE
for directions from website

DIAL 911
for EMERGENCIES

EMERGENCY NUMBERS

Morgan County Ambulance
Wartburg, TN
(423) 346-6601

Morgan County Sheriff
Wartburg, TN
(423) 346-6262

Morgan County Medical Center
224 Old Mill Road
Wartburg, TN
(423) 346-6221

Roane Medical Center
412 Devonia Street
Harriman, TN
(865) 882-1323

Ambulatory Care Center
1236 Knoxville Hwy
Wartburg, TN
(423) 346-5566