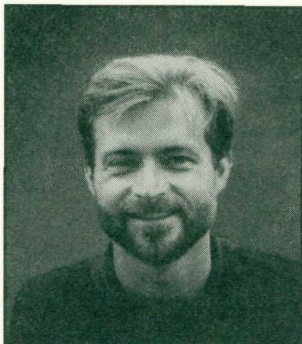
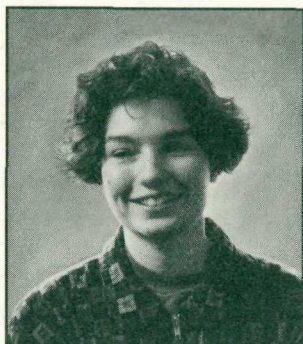




Moments in Time Trail is a collaborative effort of many dedicated volunteers. Students at the University of Washington College of Forest Resources assisted with trail layout and exhibit text. Volunteers from three peninsula hiking clubs and the Washington Trails Association constructed the initial trail, followed by many hours of labor from the Washington Conservation Corps, high school and scout organizations. Donations from the Mount Rainier, North Cascades and Olympic Fund helped make the trail accessible. Northwest Interpretive Association funded the printing of this brochure.



Rob Reed



Lena Sharpe

Moments in Time

Project Artist: Cory Ench

Project Consultants: Grant and Wenonah Sharpe,
Hank Warren, Michael Smithson, Janet Scharf, Tim McNulty

TRAIL MAP

For more information about this or similar projects contact:

Rob Reed and Lena Sharpe
Memorial Foundation
KCTS Television
401 Mercer Street
Seattle, WA 98109

Mount Rainier, North Cascades
and Olympic Fund
1221 Second Avenue, Suite 350
Seattle, WA 98101

Northwest Interpretive Association
909 First Avenue, Suite 630
Seattle, WA 98104



Moments in Time Trail

Barnes Point—Lake Crescent
Olympic National Park

Moments in Time Trail winds through Barnes Point, along the forested Lake Crescent shoreline. You can enter the trail at several locations. This map is provided for your assistance and may be returned to any introductory exhibit located at trail junctions.

This trail honors the memory of Rob Reed and Lena Sharpe, producers at KCTS Channel 9 in Seattle. Rob and Lena died in a plane crash in October 1993, while filming a documentary on old-growth forests. The Rob Reed and Lena Sharpe Memorial Foundation continues the educational work to which they devoted their lives. This foundation provided the interpretive exhibits for the trail and established a scholarship for students to attend educational programs at Olympic Park Institute.

