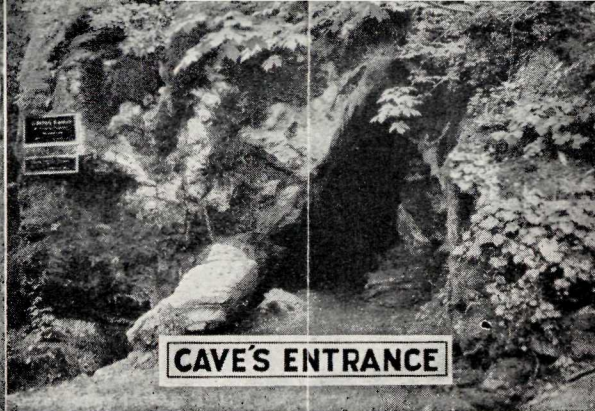
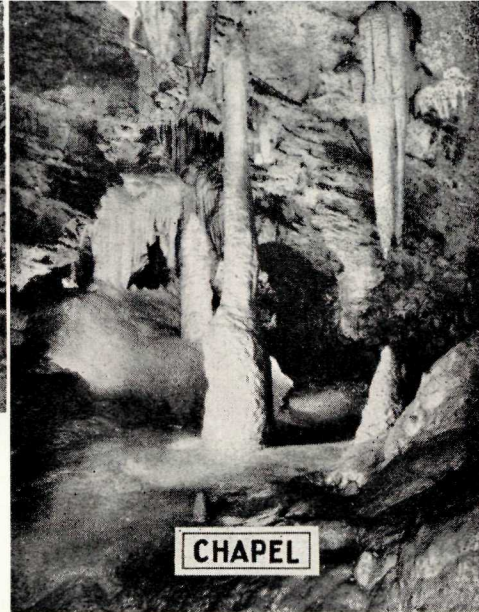




KING'S PALACE



CAVE'S ENTRANCE



CHAPEL



ALL-YEAR VISITOR

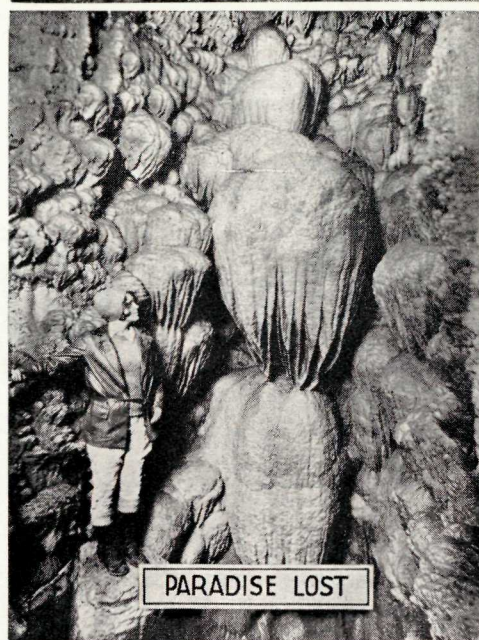
Guide Service All Year

SUMMER SCHEDULE
 MAY 29 to JUNE 15
 10:00 A. M. 1:00, 3:30 and 5:00 P. M.
 JUNE 15 to SEPTEMBER 10
 9:00, 10:00 and 11:00 A. M.
 1:00, 2:00, 3:00, 4:00, 5:00 and 7:00 P. M.
 SEPTEMBER 10 to OCTOBER 1
 10:00 A. M. 1:00, 3:30 and 5:00 P. M.

Out of schedule trips are made with 12 to 16 visitors at all hours between 8 a. m. and 5 p. m. Regular guide service, May 29 to October 1, a party under one guide not more than 16 people, *75 cents each. Special guide service by arrangement. For service between seasons see winter guide service schedule. Guide service subject to 20 per cent admission tax, collected for Internal Revenue Department, United States Treasury. Child's Rates (under 12) 50 cents.

The route of the trip through the Oregon Caves has been fully explored and traversed by over a half million people. A nursery in charge of an agreeable, competent lady to care for small children is provided.

* Subject to change.



PARADISE LOST

OREGON CAVES

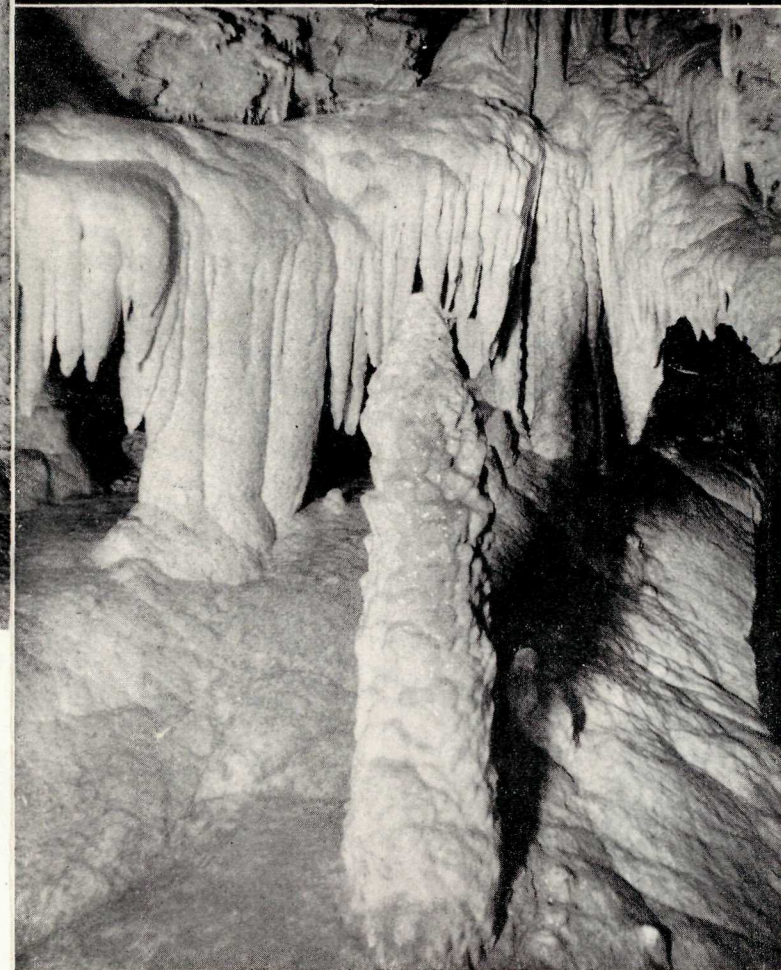
Within a Mountain of Marble

OREGON CAVES

National Monument

THE WASHINGTON MONUMENT

THE RIVER STYX



Campfire entertainment by talented college folk a nightly feature.

Then, guests may dance on the perfect floor in the main Dining Room.



AROUND THE CAMPFIRE

Electric illumination of the Caves has recently been vastly improved.

New passages, new rooms and easier travel through the Caverns is now provided.

VIA THE REDWOOD HIGHWAY 50 MILES FROM GRANTS PASS

OREGON CAVES

Chateau

IT'S SOMETHING DIFFERENT

The new "Chateau" provides modern comforts, unusual entertainment and style of architecture entirely original. From the floor of the canyon, the six stories rise in majestic beauty blending with the forest and moss covered marble ledges of the surrounding country.

The motorist arriving at the Oregon Caves, over a hard surface highway, alights at the lounge door on the 4th floor of this unique structure. He finds the lounge an atmosphere of rustic comfort. In its center the great double fireplace of natural marble. Wide plate windows with upholstered davenports and chairs. Appurtenances of rooms and bath fit the occasion for perfect rest.

At the landing, overlooking the dining rooms on the third floor, one is amazed to hear, blending with music of the orchestra, the falls of the mountain stream, which wends its way across this room and on to the sea. The guests, following dinner, join in the rhythm of music, after crossing a rustic bridge to the perfect dancing floor. The food and the setting bring satisfaction. The service is almost entirely by alert and agreeable college students. The visitor is impressed with a feeling that the cheerful and earnest attention is a pleasure rather than a duty.

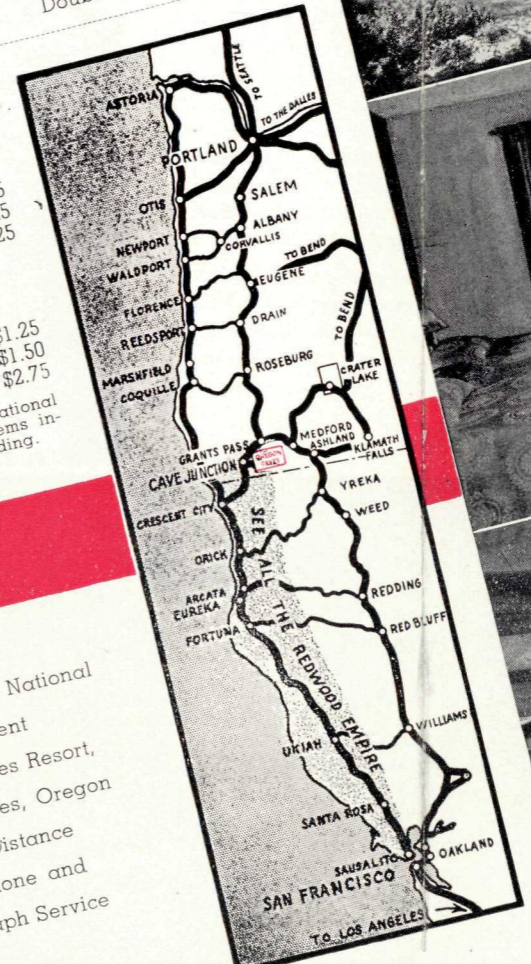
For information concerning the nearest rail or bus connections with the Oregon Caves, consult the Southern Pacific or Greyhound offices.

1948—DAILY RATES—EUROPEAN

CHATEAU ROOMS—WITH BATH:		Double	\$8.00
Single	\$6.50	Suites	\$12.00 & \$13.00
Twin Beds	9.00		
CHATEAU ROOMS—DETACHED			
Single	\$3.50		
Extra Bed			
All rooms with hot and cold water, steam heat, etc.			
COTTAGE ROOMS—WITH BATH:		Double	\$4.00
Single	\$2.50		
Twin Beds	5.00		
COTTAGE ROOMS—WITHOUT BATH:		Double	7.00
Single	\$2.00		
Extra Bed			
Cottages equipped with electric heat, showers and toilets.			

Coffee Shop	
Club Breakfast	65c and \$1.25
Luncheon	\$1.75 and \$2.25
Dinner	Also a la carte
Dining Room	
Club Breakfast	75c, \$1.00 and \$1.25
Luncheon	\$1.50
Dinner	*\$2.25 and *\$2.75

All rates approved by National Park Service. Starred items indicate approval pending.



- Oregon Caves National Monument
- Oregon Caves Resort,
- Oregon Caves, Oregon
- Long Distance Telephone and Telegraph Service

The temperature at the Caves is delightfully cool. There are no mosquitoes and no poison oak.

Paved Highway to Caves

The Caves are located in the heart of the Siskiyou, 4000 feet elevation, 50 miles from Grants Pass, where the Pacific and Redwood Highways meet, and 76 miles from Crescent City, where the Redwood and Oregon Coast Highways meet. The Oregon Caves Highway, No. 46 connecting with the Redwood Highway at Caves Junction is of great interest. From Grants Pass, Oregon, or Crescent City, California, a paved road leads to Caves entrance.

While You're Here

Of course, you will explore "The Marble Halls of Oregon." Ages before man looked upon this sphere, nature's artists were carving and molding within this mountain of marble. Through winding corridors, connecting countless chambers, are weird but majestic creations. Here, as though tapestries woven by unseen hands; there, likenesses of human figures. Probably no caverns of the world hold more to attract than the famous Ghost Chamber, Paradise Lost, King's Palace, Dante's Inferno, Wigwam and other rooms.

