

SERENE LOCATION

Set in wooded splendor high atop the Siskiyou Mountains, the historic Chateau at the Oregon Caves offers the perfect setting to leave behind the demands and interruptions of everyday life. The absence of phone and television invites you to immerse yourself in the peace and serenity of whispering woods and gently falling water.



COMMUNITY SUPPORT

Oregon Caves Outfitters is owned and operated by the Illinois Valley Community Development Organization, a volunteer-driven, non-profit organization addressing issues of poverty and unemployment in the Illinois Valley. Oregon Caves Outfitters prides itself in hiring locally and promoting the work of local artists, crafters and small businesses through sales, programs and special events. Proceeds from the operation of the Chateau are used to support programs that improve the social and economic situation in the Illinois Valley.

The
OREGON CAVES
OUTFITTERS

*Authorized concessionaire of the
National Park Service*

Lodging

~
Coffee Shop

~
Gift Gallery

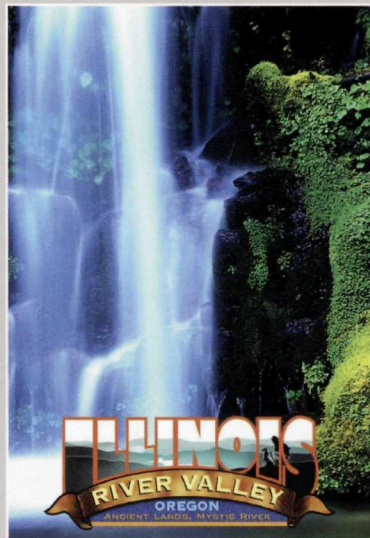
~
Dining Room

~
Coffee/Deli Bar

*Special Event and Large Group Rates
Tour Packages*

The
CHATEAU at The
OREGON CAVES
NATIONAL
MONUMENT

Open May through October
Call 541-592-3400 or 1-877-245-9022
for reservations.



Come Share the Wonder!

The
CHATEAU at The
OREGON CAVES
NATIONAL
MONUMENT



*"One of the Great Lodges
of the Northwest"*

The
OREGON CAVES
OUTFITTERS

P.O. Box 1824, 20000 Caves Highway
Cave Junction, OR 97523

Phone: 541-592-3400

Toll free: 1-877-245-9022

Fax: 541-592-4106

Email: caves@cavenet.com

www.oregoncavesoutfitters.com

www.OregonCavesChateau.com

The CHATEAU at The OREGON CAVES NATIONAL MONUMENT

Built to span a wooded ravine, the Oregon Caves Chateau rests in harmony with its forested surroundings. Sheathed in shaggy Port Orford cedar, the lodge rises up from the ravine and into the trees as a natural extension of its surroundings. An underground stream flows from the Caves and feeds the waterfall and pond before it continues its journey through the Chateau's Dining Room and into the ravine, below.



Guests may enjoy a view of the wooded ravine while dining at the Chateau.

The Chateau houses 23 inviting guest rooms (14 Standard, 9 Deluxe), a 1930's-style Coffee Shop, featuring old fashioned hard ice cream shakes, and a separate Dining Room with babbling stream and wooded canyon view. An intimate lobby, complete with baby grand piano and historic Monterey furniture, welcomes you inside to enjoy a glass



of wine before a roaring fire or a board game with family and new found friends.



Step back in time and enjoy the pleasure of an old fashioned ice cream soda in the Chateau's 1930's style Cave Café.

The Chateau features our *Coffee/Deli Bar*, where you can purchase delicious java concoctions, freshly made deli sandwiches, salads, and a selection of freshly baked goodies. Oregon Caves Outfitters proudly features local meats, produce, and baked goods for your dining pleasure.

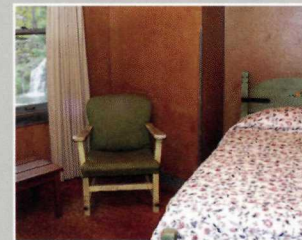
A short walk from the Chateau brings you to the entrance to the Oregon Caves and an extensive trail system that awaits your exploration. A short drive down the mountain brings you back to the Illinois River Valley where you can enjoy a wide range of outdoor activities including: horse-back riding, hiking, biking, a challenging 9 hole golf course, and a host of natural sites.



Let our friendly staff assist you in arranging your visit to our Valley's many interesting and unique sites, including local artist's studios, our award-winning wineries, and the site of the recent 500,000 acre Biscuit Fire, the largest Oregon woodland fire in recorded history.

No visit to the Caves is complete without spending time browsing through our unique *Gift Gallery*. Featuring the quality creations of our many talented local artists and crafters, and a wide selection of souvenirs, the Gift Gallery is the perfect place to find that one-of-a-kind gift to take back home.

Room rates* for the Chateau's 23 rooms, many featuring distinctive Monterey furnishings designed especially for the lodge, range from \$80.00 - \$115.00 (single rooms with double occupancy) and \$130.00 - \$140.00 for suites (2 adjoining rooms – up to 4 persons). Views of waterfall and pond or wooded ravine are available. Special rates apply for large groups and special events. Call for more information.



The OREGON CAVES OUTFITTERS

Call us at 541-592-3400 or toll free 1-877-245-9022

or visit our website

www.OregonCavesChateau.com

for reservations and more information

on special events.

*2007 room rates. Rates are subject to change.