



## Fall Edition, 2011



*Bigleaf Maple trees frame the Chateau with Fall Colors*

### This Season on the Monument

Junior Ranger activity booklets are available free of charge at the Visitor Center. Children of all ages can become a Junior Ranger and earn a badge!

Be sure to stroll through the historic Chateau at the Oregon Caves, open through mid-October.

Lodging, fine dining, gift gallery, 1930's era coffee shop, a relaxing lobby, and more are just across from the cave entrance. Inquire at The Chateau or visit their website for information about entertainment and events:

<http://www.oregoncaveschateau.com/>

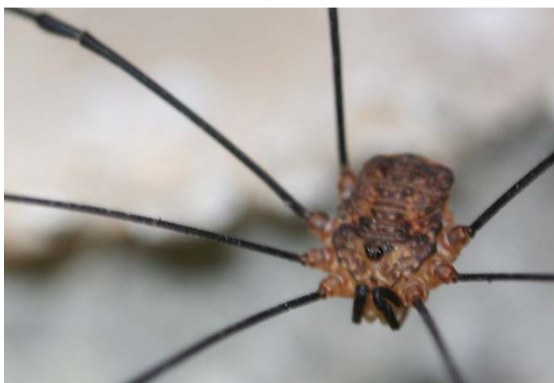
### Bigleaf Maple (*Acer macrophyllum*)

Appropriately named, the Bigleaf Maple has the largest leaves of any Maple at 15-30 centimeters across! Native to coastal areas from Alaska to California, this tree grows in the Monument's mixed forests. An abundance of Bigleaf Maple trees, with stunning colors, can be viewed in the Chateau's ravine this time of year. In fact, the streamside "No Name Trail" is one of the best hikes to observe the yellow foliage; Maples thrive there due to the moisture provided by

Cave Creek and No Name Creek.

The tree's seeds provide food for squirrels, chipmunks, and birds, while Black-tailed Deer eat the twigs, leaves, and saplings. People occasionally make maple syrup from the sap, resulting in a different flavor than that of the Sugar Maple. It takes about 35 gallons of sap to produce 1 gallon of Bigleaf Maple syrup!

### Harvestman



*Closeup of a Harvestman*



*Harvestmen cluster in Oregon Caves*

Fall brings cooler temperatures and snow to the Monument, yet the cave remains a constant 44° Fahrenheit (7° Celsius) year round. Animals such as harvestmen and hibernating bats take advantage of these warm winter temperatures and use the cave as a seasonal home. Look for clusters of many harvestmen just inside any cave entrance this time of year. They link legs and group together to ward off predators and provide safety in numbers.

Sometimes called daddy-long-legs, a harvestman is an eight-legged Arachnid which lacks venom, does not produce silk, and has just one segment to its body. Over 6000 different species of harvestman exist on Earth and likely thousands more have yet to be classified. The forest around Oregon Caves is home to a few species of harvestmen.

Legs are important sensory organ since this animal has limited vision. The legs are loaded with nerves to help the harvestman find food like insects, spiders, decaying plant and animal matter, and fungi. The harvestman actually cleans each of its eight legs after eating a meal!