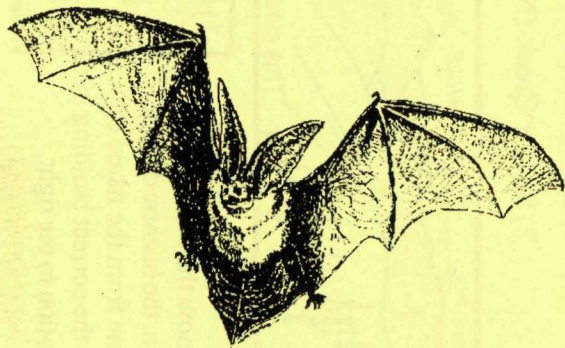




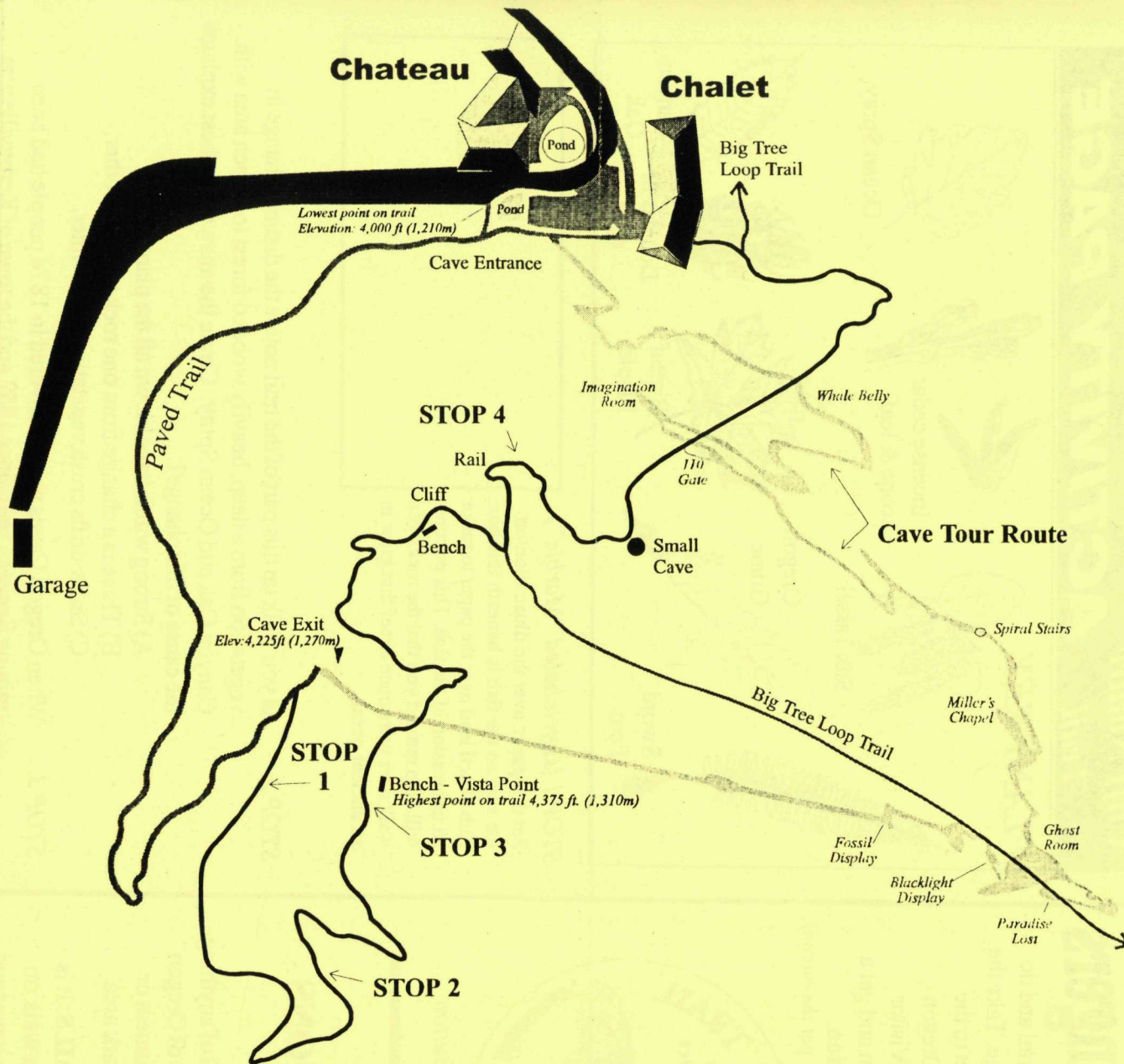
**Junior Ranger Program**  
**CLIFF NATURE TRAIL**



**The Trail Above The Cave**

This is a good trail to take after a cave tour. From the cave exit, the trail gradually climbs 150 feet (45 m) to a vista point that looks toward Illinois Valley and the Kalmiopsis Wilderness. The trail continues over marble outcrops to a good view of the Historic District. Visitors then follow the trail back to the Chalet where restrooms and water are located.

Printing of this guide made possible by a grant from the Natural History Association.



**Length of trail from Cave Exit to Chateau:** 0.7 mile (trail above cave), .3 mile (paved trail)  
**Total length around loop:** 1 mile.  
**Elevation Gain:** 375 feet (110 m) from the lowest point at the Chalet to the highest point.  
**Notes:** The trail above the caves goes over marble outcrops which create rocky, uneven surfaces on some portions of the trail. Segments of the trail that pass through dense forest may be hazardous on days with high winds which can blow down loose limbs from the surrounding trees.

Layout & design:  
Roger Brandt



# Junior Rangers

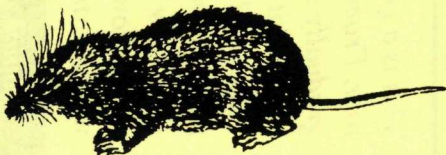
Hike the Cliff Nature Trail and do the activities on this page. Take the completed activity sheet to the Information Station at Oregon Caves or Illinois Valley Visitor Center in Cave Junction and get a **Cliff Nature Trail button**.  
(You must hike the trail to get the button)



Cliff Nature Trail Button

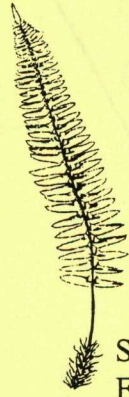
## TRAIL REGULATIONS

- ❑ **NO COLLECTING** of anything inside the boundaries of Oregon Caves National Monument or any other National Park area.
- ❑ **NO PETS ON TRAILS:** It is OK to take pets for a walk on the gravel road at the lower end of the main parking lot. Pets must be on a leash when outside of vehicle.
- ❑ **DO NOT FEED WILDLIFE** including squirrels, birds and other wildlife at Oregon Caves National Monument
- ❑ **NO SMOKING ON TRAILS:** Oregon Caves has a high fire hazard throughout most of the spring, summer and fall.



## Cliff Nature Trail **ACTIVITY PAGE**

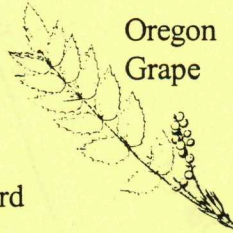
### PLANT KEY



Sword Fern



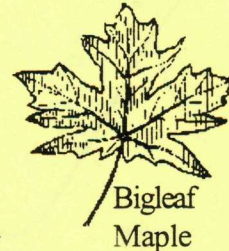
Silk Tassel



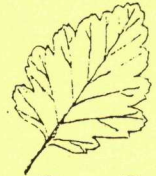
Oregon Grape



Incense cedar cone & leaf



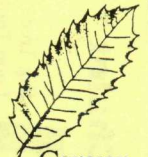
Bigleaf Maple



Ocean Spray



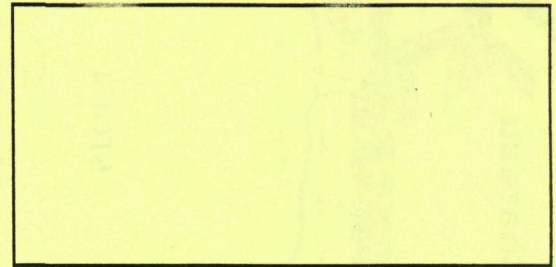
Douglas fir cone



Canyon Oak

**STOP 1** (sign labeled "Marble"):

Set this paper over the illustration on the sign so the fish is beneath this box. Rub pencil lead over the paper to make an impression of the fish. This picture will help remind you that the rocks you walk over were once a reef that grew in an ancient ocean.

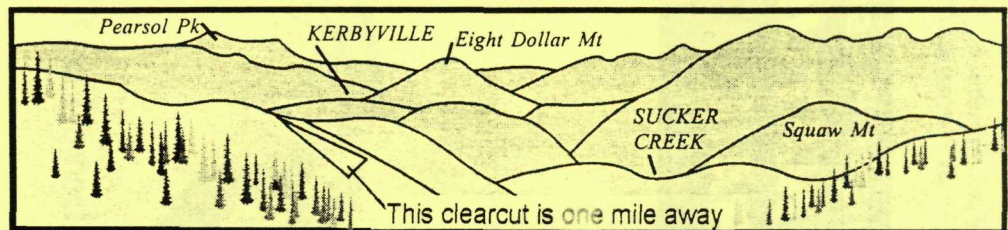


**STOP 2:** As you walk up this part of the trail notice the distinct change in vegetation from a deep, heavily wooded forest to a open area with Canyon Oak and Ocean Spray. Circle the answer that best explains the cause of this change?

- A) Strong winds have blown all the plants away.
- B) There is a change from one rock type to another.
- C) Snow drifts crush vegetation each winter.

**STOP 3:** When Oregon Caves was discovered in 1874 people had been mining Sucker Creek since 1852 and the town of Kerbyville was the county seat. Estimate how far it is from where you stand to:

- 1) Kerbyville (Near Eight Dollar Mt) =  miles
- 2) Sucker Creek (Near foot of Squaw Mt) =  miles



**STOP 4:**

Do you know the names of the buildings in the historic district. Draw a line from the name on the left to the correct building in the illustration to the right.

- 1) Chateau
- 2) Chalet
- 3) Guide residence  
(Closed to public)

