

As the Nation's principal conservation agency, the Department of the Interior has basic responsibilities for Van Buren, MO 63965, is in immediate charge.

As the Nation's principal conservation agency, the Department of the Interior has basic responsibilities for Van Buren, MO 63965, is in immediate charge.

As the Nation's principal conservation agency, the Department of the Interior has basic responsibilities for Van Buren, MO 63965, is in immediate charge.

As the Nation's principal conservation agency, the Department of the Interior has basic responsibilities for Van Buren, MO 63965, is in immediate charge.

As the Nation's principal conservation agency, the Department of the Interior has basic responsibilities for Van Buren, MO 63965, is in immediate charge.

As the Nation's principal conservation agency, the Department of the Interior has basic responsibilities for Van Buren, MO 63965, is in immediate charge.

As the Nation's principal conservation agency, the Department of the Interior has basic responsibilities for Van Buren, MO 63965, is in immediate charge.

As the Nation's principal conservation agency, the Department of the Interior has basic responsibilities for Van Buren, MO 63965, is in immediate charge.

As the Nation's principal conservation agency, the Department of the Interior has basic responsibilities for Van Buren, MO 63965, is in immediate charge.

As the Nation's principal conservation agency, the Department of the Interior has basic responsibilities for Van Buren, MO 63965, is in immediate charge.

As the Nation's principal conservation agency, the Department of the Interior has basic responsibilities for Van Buren, MO 63965, is in immediate charge.

As the Nation's principal conservation agency, the Department of the Interior has basic responsibilities for Van Buren, MO 63965, is in immediate charge.

As the Nation's principal conservation agency, the Department of the Interior has basic responsibilities for Van Buren, MO 63965, is in immediate charge.

As the Nation's principal conservation agency, the Department of the Interior has basic responsibilities for Van Buren, MO 63965, is in immediate charge.

As the Nation's principal conservation agency, the Department of the Interior has basic responsibilities for Van Buren, MO 63965, is in immediate charge.

As the Nation's principal conservation agency, the Department of the Interior has basic responsibilities for Van Buren, MO 63965, is in immediate charge.

As the Nation's principal conservation agency, the Department of the Interior has basic responsibilities for Van Buren, MO 63965, is in immediate charge.

As the Nation's principal conservation agency, the Department of the Interior has basic responsibilities for Van Buren, MO 63965, is in immediate charge.

As the Nation's principal conservation agency, the Department of the Interior has basic responsibilities for Van Buren, MO 63965, is in immediate charge.

As the Nation's principal conservation agency, the Department of the Interior has basic responsibilities for Van Buren, MO 63965, is in immediate charge.

As the Nation's principal conservation agency, the Department of the Interior has basic responsibilities for Van Buren, MO 63965, is in immediate charge.

As the Nation's principal conservation agency, the Department of the Interior has basic responsibilities for Van Buren, MO 63965, is in immediate charge.

As the Nation's principal conservation agency, the Department of the Interior has basic responsibilities for Van Buren, MO 63965, is in immediate charge.

As the Nation's principal conservation agency, the Department of the Interior has basic responsibilities for Van Buren, MO 63965, is in immediate charge.

As the Nation's principal conservation agency, the Department of the Interior has basic responsibilities for Van Buren, MO 63965, is in immediate charge.

As the Nation's principal conservation agency, the Department of the Interior has basic responsibilities for Van Buren, MO 63965, is in immediate charge.

As the Nation's principal conservation agency, the Department of the Interior has basic responsibilities for Van Buren, MO 63965, is in immediate charge.

As the Nation's principal conservation agency, the Department of the Interior has basic responsibilities for Van Buren, MO 63965, is in immediate charge.

As the Nation's principal conservation agency, the Department of the Interior has basic responsibilities for Van Buren, MO 63965, is in immediate charge.

As the Nation's principal conservation agency, the Department of the Interior has basic responsibilities for Van Buren, MO 63965, is in immediate charge.

As the Nation's principal conservation agency, the Department of the Interior has basic responsibilities for Van Buren, MO 63965, is in immediate charge.

As the Nation's principal conservation agency, the Department of the Interior has basic responsibilities for Van Buren, MO 63965, is in immediate charge.

As the Nation's principal conservation agency, the Department of the Interior has basic responsibilities for Van Buren, MO 63965, is in immediate charge.

As the Nation's principal conservation agency, the Department of the Interior has basic responsibilities for Van Buren, MO 63965, is in immediate charge.

As the Nation's principal conservation agency, the Department of the Interior has basic responsibilities for Van Buren, MO 63965, is in immediate charge.

As the Nation's principal conservation agency, the Department of the Interior has basic responsibilities for Van Buren, MO 63965, is in immediate charge.

As the Nation's principal conservation agency, the Department of the Interior has basic responsibilities for Van Buren, MO 63965, is in immediate charge.

As the Nation's principal conservation agency, the Department of the Interior has basic responsibilities for Van Buren, MO 63965, is in immediate charge.

As the Nation's principal conservation agency, the Department of the Interior has basic responsibilities for Van Buren, MO 63965, is in immediate charge.

As the Nation's principal conservation agency, the Department of the Interior has basic responsibilities for Van Buren, MO 63965, is in immediate charge.

As the Nation's principal conservation agency, the Department of the Interior has basic responsibilities for Van Buren, MO 63965, is in immediate charge.

As the Nation's principal conservation agency, the Department of the Interior has basic responsibilities for Van Buren, MO 63965, is in immediate charge.

As the Nation's principal conservation agency, the Department of the Interior has basic responsibilities for Van Buren, MO 63965, is in immediate charge.

As the Nation's principal conservation agency, the Department of the Interior has basic responsibilities for Van Buren, MO 63965, is in immediate charge.

As the Nation's principal conservation agency, the Department of the Interior has basic responsibilities for Van Buren, MO 63965, is in immediate charge.

As the Nation's principal conservation agency, the Department of the Interior has basic responsibilities for Van Buren, MO 63965, is in immediate charge.

As the Nation's principal conservation agency, the Department of the Interior has basic responsibilities for Van Buren, MO 63965, is in immediate charge.

As the Nation's principal conservation agency, the Department of the Interior has basic responsibilities for Van Buren, MO 63965, is in immediate charge.

As the Nation's principal conservation agency, the Department of the Interior has basic responsibilities for Van Buren, MO 63965, is in immediate charge.

As the Nation's principal conservation agency, the Department of the Interior has basic responsibilities for Van Buren, MO 63965, is in immediate charge.

As the Nation's principal conservation agency, the Department of the Interior has basic responsibilities for Van Buren, MO 63965, is in immediate charge.

As the Nation's principal conservation agency, the Department of the Interior has basic responsibilities for Van Buren, MO 63965, is in immediate charge.

As the Nation's principal conservation agency, the Department of the Interior has basic responsibilities for Van Buren, MO 63965, is in immediate charge.

As the Nation's principal conservation agency, the Department of the Interior has basic responsibilities for Van Buren, MO 63965, is in immediate charge.

As the Nation's principal conservation agency, the Department of the Interior has basic responsibilities for Van Buren, MO 63965, is in immediate charge.

As the Nation's principal conservation agency, the Department of the Interior has basic responsibilities for Van Buren, MO 63965, is in immediate charge.

As the Nation's principal conservation agency, the Department of the Interior has basic responsibilities for Van Buren, MO 63965, is in immediate charge.

As the Nation's principal conservation agency, the Department of the Interior has basic responsibilities for Van Buren, MO 63965, is in immediate charge.

As the Nation's principal conservation agency, the Department of the Interior has basic responsibilities for Van Buren, MO 63965, is in immediate charge.

As the Nation's principal conservation agency, the Department of the Interior has basic responsibilities for Van Buren, MO 63965, is in immediate charge.

As the Nation's principal conservation agency, the Department of the Interior has basic responsibilities for Van Buren, MO 63965, is in immediate charge.

As the Nation's principal conservation agency, the Department of the Interior has basic responsibilities for Van Buren, MO 63965, is in immediate charge.

As the Nation's principal conservation agency, the Department of the Interior has basic responsibilities for Van Buren, MO 63965, is in immediate charge.

As the Nation's principal conservation agency, the Department of the Interior has basic responsibilities for Van Buren, MO 63965, is in immediate charge.

As the Nation's principal conservation agency, the Department of the Interior has basic responsibilities for Van Buren, MO 63965, is in immediate charge.

As the Nation's principal conservation agency, the Department of the Interior has basic responsibilities for Van Buren, MO 63965, is in immediate charge.

As the Nation's principal conservation agency, the Department of the Interior has basic responsibilities for Van Buren, MO 63965, is in immediate charge.

As the Nation's principal conservation agency, the Department of the Interior has basic responsibilities for Van Buren, MO 63965, is in immediate charge.

As the Nation's principal conservation agency, the Department of the Interior has basic responsibilities for Van Buren, MO 63965, is in immediate charge.

As the Nation's principal conservation agency, the Department of the Interior has basic responsibilities for Van Buren, MO 63965, is in immediate charge.

As the Nation's principal conservation agency, the Department of the Interior has basic responsibilities for Van Buren, MO 63965, is in immediate charge.

As the Nation's principal conservation agency, the Department of the Interior has basic responsibilities for Van Buren, MO 63965, is in immediate charge.

As the Nation's principal conservation agency, the Department of the Interior has basic responsibilities for Van Buren, MO 63965, is in immediate charge.

As the Nation's principal conservation agency, the Department of the Interior has basic responsibilities for Van Buren, MO 63965, is in immediate charge.

As the Nation's principal conservation agency, the Department of the Interior has basic responsibilities for Van Buren, MO 63965, is in immediate charge.

As the Nation's principal conservation agency, the Department of the Interior has basic responsibilities for Van Buren, MO 63965, is in immediate charge.

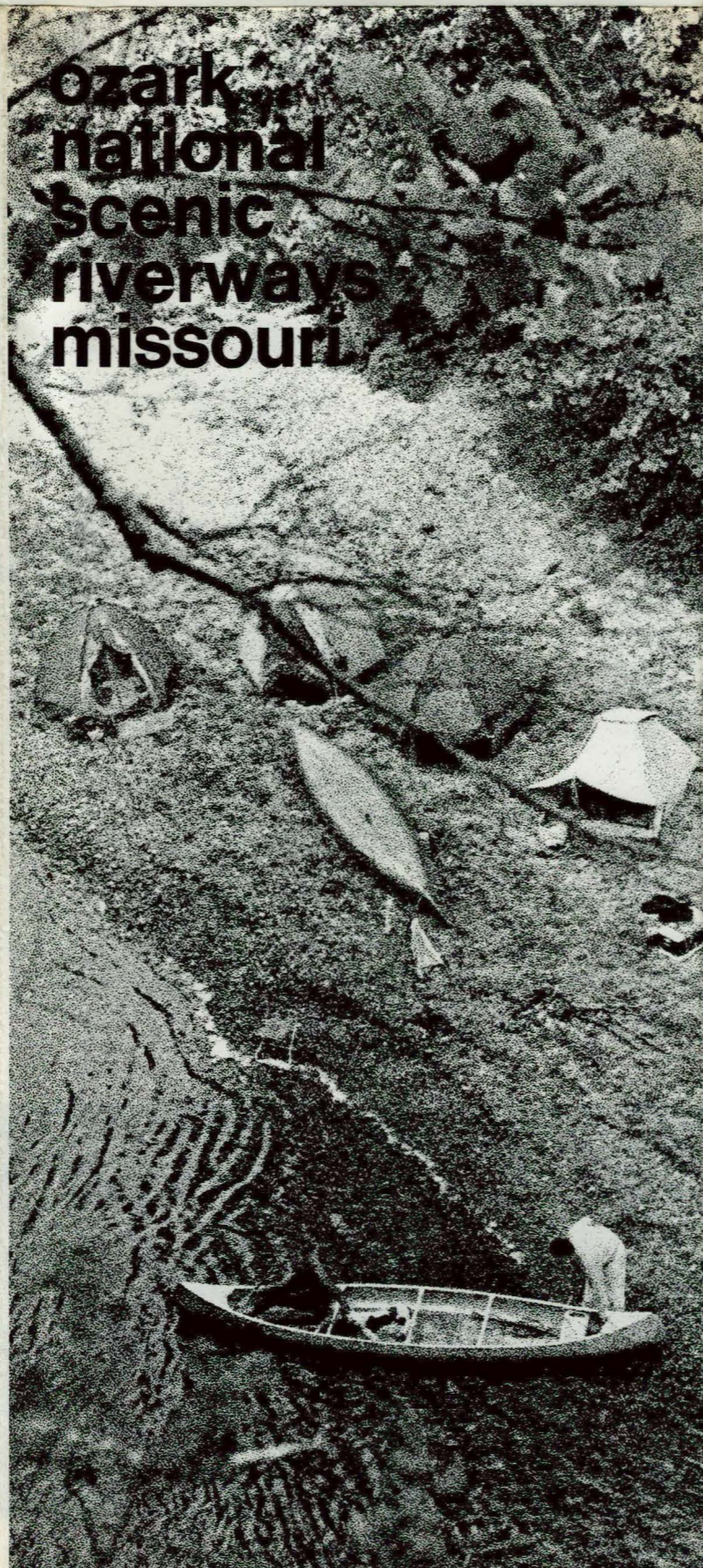
As the Nation's principal conservation agency, the Department of the Interior has basic responsibilities for Van Buren, MO 63965, is in immediate charge.

As the Nation's principal conservation agency, the Department of the Interior has basic responsibilities for Van Buren, MO 63965, is in immediate charge.

As the Nation's principal conservation agency, the Department of the Interior has basic responsibilities for Van Buren, MO 63965, is in immediate charge.

As the Nation's principal conservation agency, the Department of the Interior has basic responsibilities for Van Buren, MO 63965, is in immediate charge.

As the Nation's principal conservation agency, the Department of the Interior has basic responsibilities for Van Buren, MO 63965, is in immediate charge.



ABOUT YOUR VISIT

Crossed or skirted by several highways, Ozark National Scenic Riverways is within an easy day's drive of two large metropolitan centers—175 miles south of St. Louis, 250 southeast of Kansas City—yet it remains “off the beaten path.”

You may obtain lodging, eating, and other accommodations and services in nearby cities and towns. Three areas—Big Spring near Van Buren; Alley Spring near Eminence; and Round Spring, 13 miles north of Eminence and 30 miles south of Salem—are within the boundaries of the riverways and have campsites available. Montauk State Park, adjoining the north end of the riverways, also has public campgrounds. There are privately owned campgrounds within and adjacent to the riverways.

The chambers of commerce in the towns nearest the place where you wish to stay will provide information regarding these accommodations.

PLEASE KEEP IN MIND

Scenic easements are private property. Respect the rights of others. Camping is permitted only in designated areas or on gravel bars.

Hunting and fishing are permitted in accordance with Missouri laws but may be restricted in some areas. Inquire about hunting regulations at park headquarters or from park rangers. They also have information on Wildlife Refuges and visitor use areas zoned for public safety.

Carry out what you carry in. Do not bury litter. Place it in bags and deposit it in barrels placed for your use at convenient locations.

Fire is the greatest peril of wooded areas. Be sure that any fire you build is in a safe place and is out before you leave. Help keep the riverways clean and green.

FLOATING TIPS

A lifejacket or boat cushion should be readily available for each person in the canoe or boat. Non-swimmers should wear a lifejacket at all times.

Never stand up or change positions in the canoe or boat while afloat.

Keep gear stowed as low as possible and in the center of the craft.

Store all valuable articles (billfolds, watches, etc.) in a waterproof, airtight bag or container.

The water in the more difficult places is generally shallow; if a “chute” looks a little hazardous to you, step out and “walk” the canoe or boat through.

It is wise to carry along a small first-aid kit and a small supply of matches in a waterproof container.

If you decide to swim, watch out for swift current. If you wade, wade upstream.

For additional information about river activities and safety, check with a park ranger.

“ . . . the Mississippi and Missouri Rivers and the navigable waters flowing into them, and the carrying places between the same, shall be common highways and forever free to the public.”

—MISSOURI TERRITORIAL LAWS.

With the passage of time, these “common highways . . . forever free” have, one by one, succumbed to the progress of man. Few retain vestiges of their original character when our land was young and stout men swung flashing paddles as they traveled the gleaming water. Two of these rivers—the Current and Jacks Fork of Missouri—have become the Nation's first scenic riverways.

The relative remoteness of these two streams has helped them keep an unspoiled quality that has become a precious resource to an urban-oriented nation. Here is relief from the usual trappings that dominate our lives—the flashing windshields, exhaust fumes, and roaring speed.

Here is a step back in time to a slower, quieter era when those values that took time to appreciate were closer to us. If there is one basic sense that must be adjusted to appreciate the scenic river concept, it is one of time. A benefit of the scenic riverways is to slow down today's frantic pace and make one aware of the uncomplicated joys to be found along the Current and Jacks Fork Rivers.

To savor the enjoyment of these rivers, much depends on you. No other public area demands so strict or so pleasant an obedience as does the scenic riverways. It asks that for the duration of your visit you put away the cares that have demanded your attention, relax, and attune your senses of smell, sight, and hearing to the beauties of nature. Forget schedules and look deep into the sights around you.

In one concept the scenic riverways is an elongated park, embracing all or stretches of two wild, free-flowing rivers. Basically it consists of a strip of land immediately adjacent to the rivers, managed to provide maximum specialized recreational benefits while preserving the scenic, scientific, and general recreational qualities.

The *Current River part* of the riverways extends from Montauk State Park in Dent County, along the river to a point north of Van Buren in Carter County including an area around its junction with the Jacks Fork River, then from Big Spring Park southward to the Carter County line. The *Jacks Fork part* begins in the upper reaches of Jacks Fork River in Texas County and ends just beyond Alley Spring Park. Only in the Cardareva section between Eminence and Ellington is there any major acreage away from the river. Thus, the rivers themselves are the scenic riverways, with recreation, scenery, and scientific points of interest found on or near the rivers.

Today, visitors to the riverways are seeing these rivers much as the European explorers first saw them. This is not to say the area has not changed; it has. But, because the rivers have not been geographically in the main course of events, the manmade changes have been slight, and much of this alteration has been restored by nature.

MAN AND THE RIVERWAYS

The first man to visit the Current River country was undoubtedly a descendant of the daring hunters who crossed the Bering Sea land bridge from Asia in Pleistocene times, possibly 30,000 years ago. But the Ozark mountains were old even then. Probably from the Cretaceous period—between 60 and 125 million years ago—the Ozarks were uplifted at least twice, and the rivers of the region were eroding mountains.

When these hunters, known to us today by such names as Clovis and Folsom Man, were stalking musk ox, mammoth, camel, horse, and a now extinct species of bison along what must have been the retreating face of the glaciers, the Current River was singing the same song that it sings to us today.

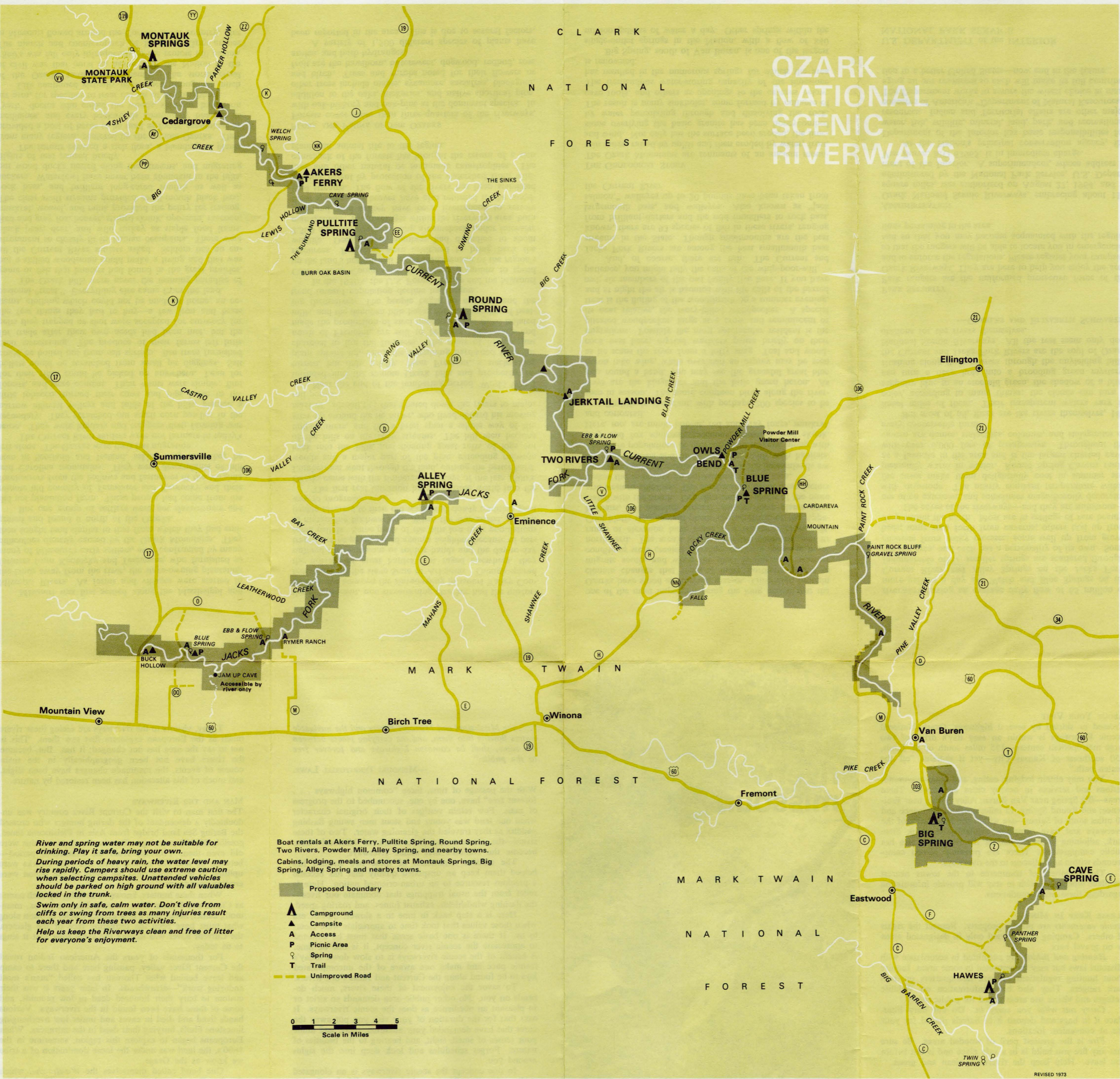
For thousands of years the American Indian roved the Current River valley, pausing here and there to camp and leave behind what Thoreau has called “man's most enduring work”—arrowheads. In later years it was their custom to bury their honored dead in low mounds, and some of these have been found in the riverways. Various bands lived and died in caves and under low overhanging limestone bluffs, burying their dead in the entrances. When Europeans began to explore this region, sometime in the 1600's, the land was under the loose domination of a tribe we know as the Osage.

One band called themselves the *Wa-zha-zhe*, which the first French explorers changed to *Ou-sahj*, and later English-speaking pioneers rendered as *Osage*. Their hold on this land was a slender one, their main territory being centered along the river to the west which bears their name. Nevertheless they were the dominant tribe when the Europeans first began to penetrate the Current River valley.

French trappers or traders, working down from the Great Lakes region, named the river *La Riviere Courante*, or “The Running River.” Later, men of Anglo-Saxon extraction changed *Courante* to *Current*.

Even in these early times the Current River country was largely bypassed in the westward expansion of our frontier; the major trails did not follow its course, and the waterways of empire were other rivers. Wandering bands of Indians, pushed westward by European explorers and settlers, paused briefly and then passed on. It was not until the 1830's that permanent settlement began.

OZARK NATIONAL SCENIC RIVERWAYS



River and spring water may not be suitable for drinking. Play it safe, bring your own.

During periods of heavy rain, the water level may rise rapidly. Campers should use extreme caution when selecting campsites. Unattended vehicles should be parked on high ground with all valuables locked in the trunk.

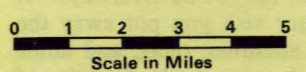
Swim only in safe, calm water. Don't dive from cliffs or swing from trees as many injuries result each year from these two activities.

Help us keep the Riverways clean and free of litter for everyone's enjoyment.

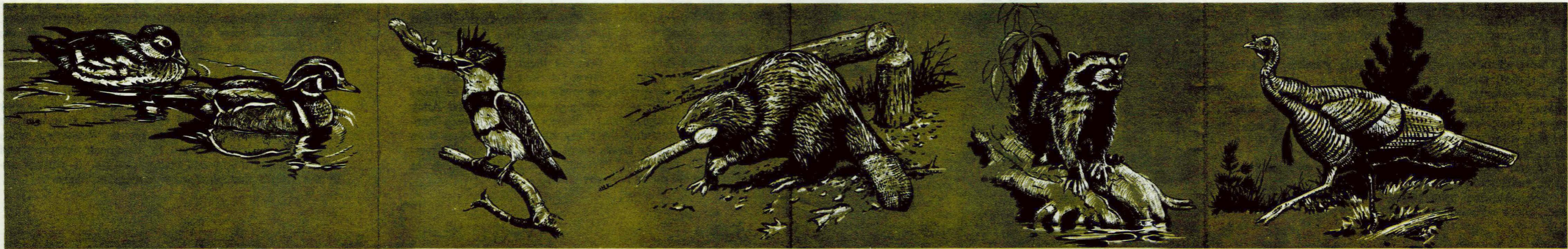
Boat rentals at Akers Ferry, Pulltite Spring, Round Spring, Two Rivers, Powder Mill, Alley Spring, and nearby towns.

Cabins, lodging, meals and stores at Montauk Springs, Big Spring, Alley Spring and nearby towns.

- Proposed boundary
- Campground
- Campsite
- Access
- Picnic Area
- Spring
- Trail
- Unimproved Road



REVISED 1973



GPO: 1973-515-972/75 REPRINT 1973

For sale by the Superintendent of Documents, U.S. Government Printing Office
Washington, D.C. 20402 - Price 10 cents