

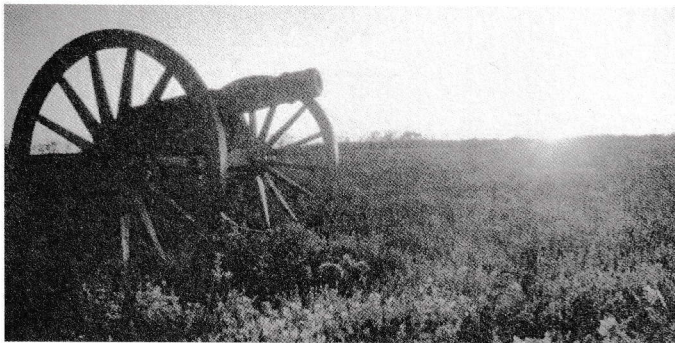
National Park Service
U.S. Department of the Interior



Palo Alto Battlefield
National Historical Park

PALO ALTO BATTLEFIELD





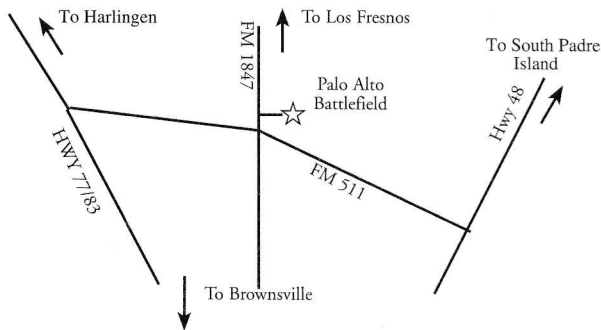
On May 8, 1846, the thunder of cannon fire rumbled across the prairie of Palo Alto, signaling the start of a two-year war between the United States and Mexico.

Today, only six miles from the international boundary that resulted from this war, Palo Alto Battlefield National Historical Park preserves this scene of conflict and presents the history of this war.

Palo Alto Battlefield National Historical Park is the only unit of the National Park Service dedicated to telling the story of the war between the United States and Mexico. The park offers an exhibit and video about the war, a short walking trail, a battlefield overlook, and special events.

We invite you to visit and learn how a war between neighbors has affected the history of the United States and Mexico.

The park is open daily from 8 a.m. to 5 p.m. and is located in Brownsville, Texas on FM 1847 (7200 Paredes Line Road) just north of the intersection with FM 511.



For additional information
please contact:
Palo Alto Battlefield
National Historical Park



Mailing Address:
1623 Central Blvd., Suite 213
Brownsville, TX 78521
956-541-2785 x233