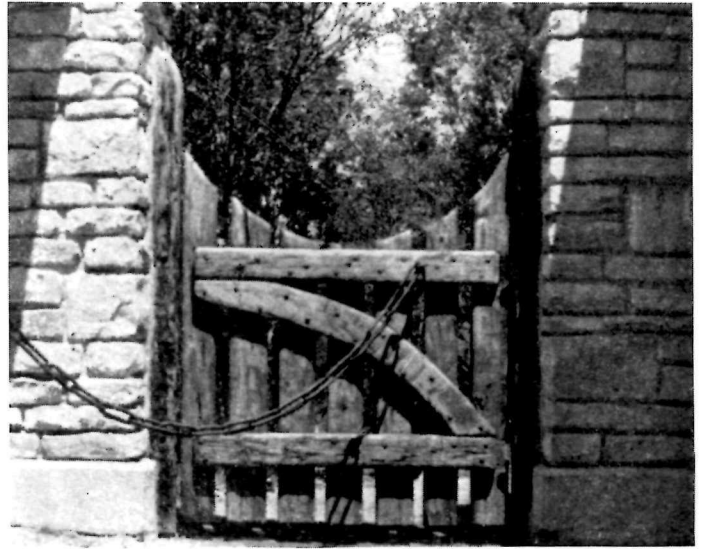


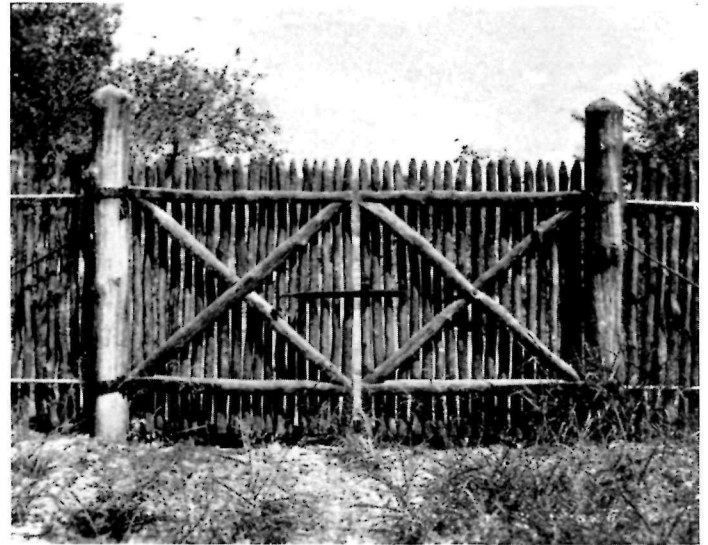
Palmetto State Park, Texas



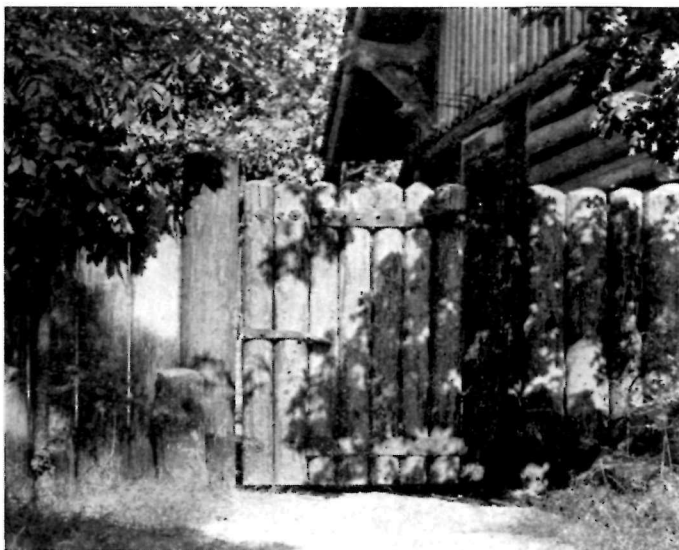
Garner State Park, Texas

SERVICE GATES

Functioning as entrances to service or utility enclosures, the gates here pictured are not without decorative value, particularly the two at the top of the page. The gates directly at right permit the entrance of a vehicle through a fence of good park character which surrounds an incinerator. The example at lower right is likewise of vehicle width and gives entrance to a typical service group enclosure. The gate which continues the palisade fence leads to the service yard of a lodge building and affords a maximum of obstruction to view.



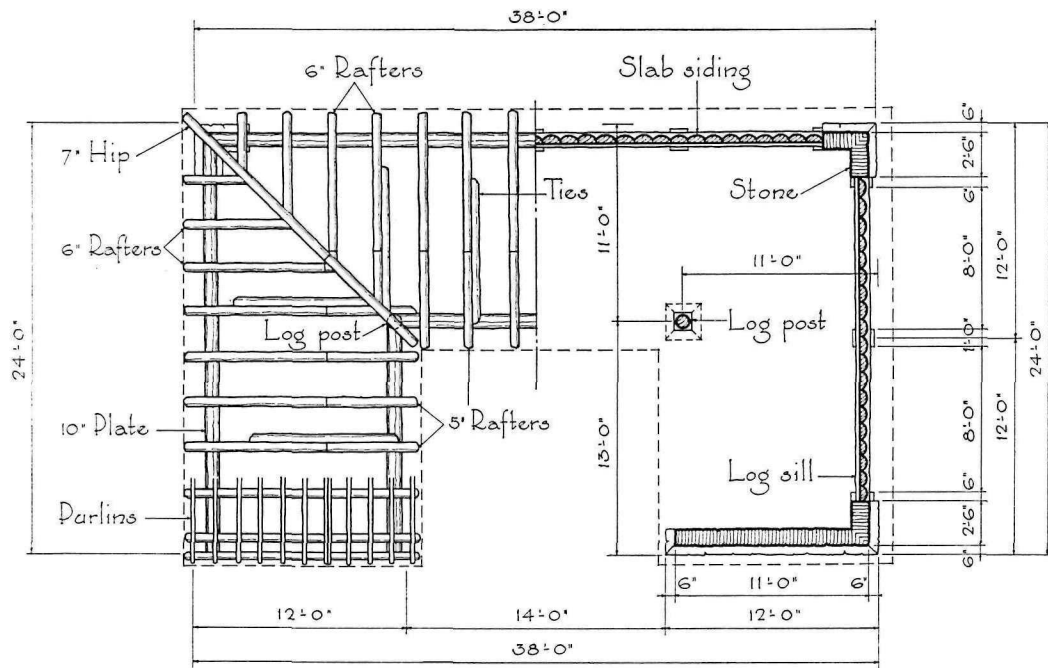
Bonham State Park, Texas



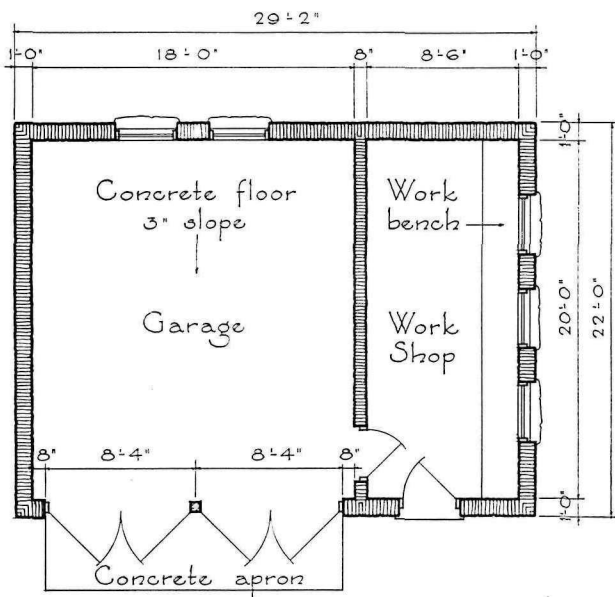
Petit Jean State Park, Arkansas



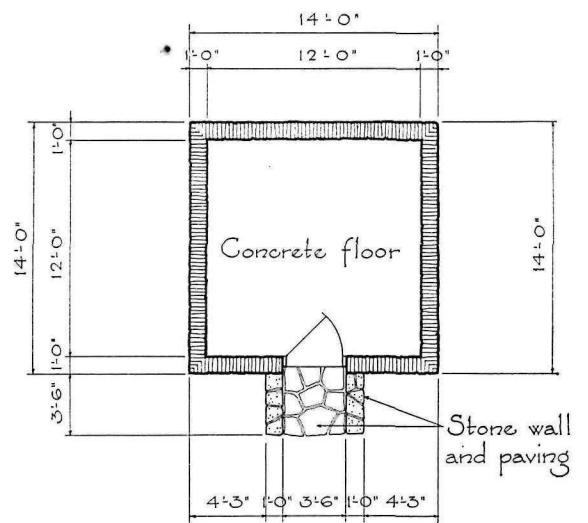
Lake Brownwood State Park, Texas



Wood Storage Building



Caretaker's Garage and Workshop

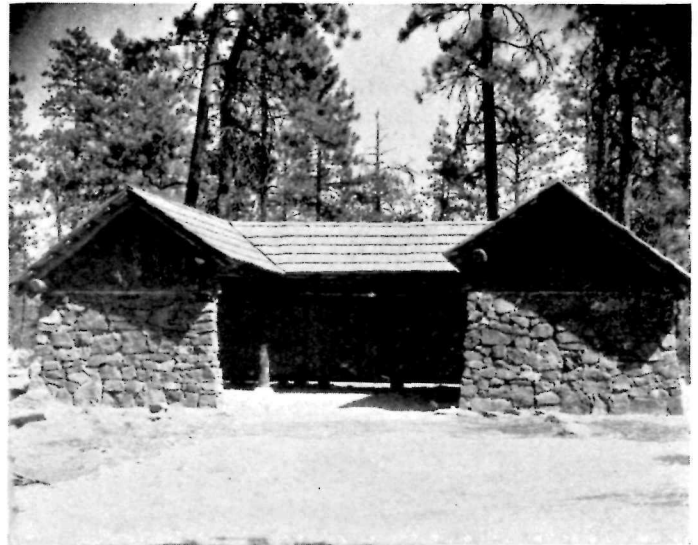


Utility Building

Riverside State Park - Washington

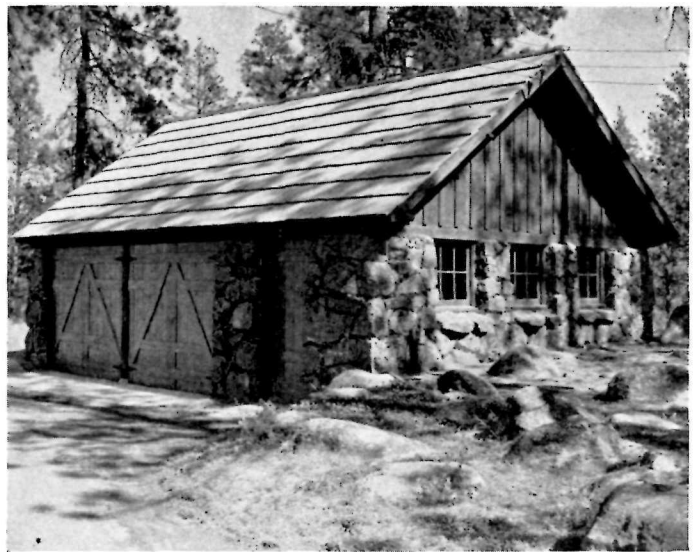
Scale $\frac{3}{32}'' = 1'-0''$

Here illustrated are three structures of maintenance purpose which, with a custodian's dwelling elsewhere shown in this compilation, indicate a pleasant and consistent unity of structural theme. Together these make up a group as closely related by location and function as by architectural style. The not entirely satisfying masonry may result from characteristics of the local stone which make more structural shape for the units difficult, if not impossible.



Wood Storage Building, Riverside State Park, Washington

In extent this garage with shop space is typical of the facility that complements the caretaker's dwelling in the park of average size. The shop is well lighted. The outcropping rocks in the foreground are indicative of the character of the area and probably explanatory of the imposed limitations of masonry technique here. The lichens on the stone surfaces exposed in the walls and the moss-filled joints go far to compensate for the unstructural pattern of the masonry.

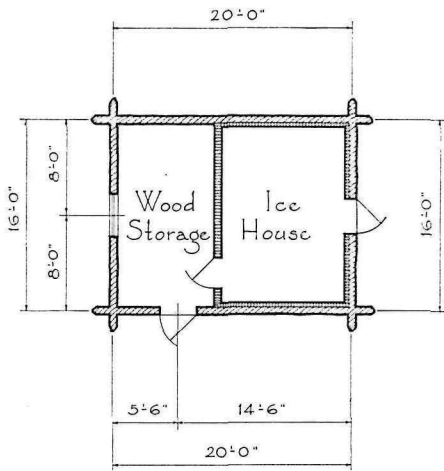


Caretaker's Garage and Workshop, Riverside State Park, Washington

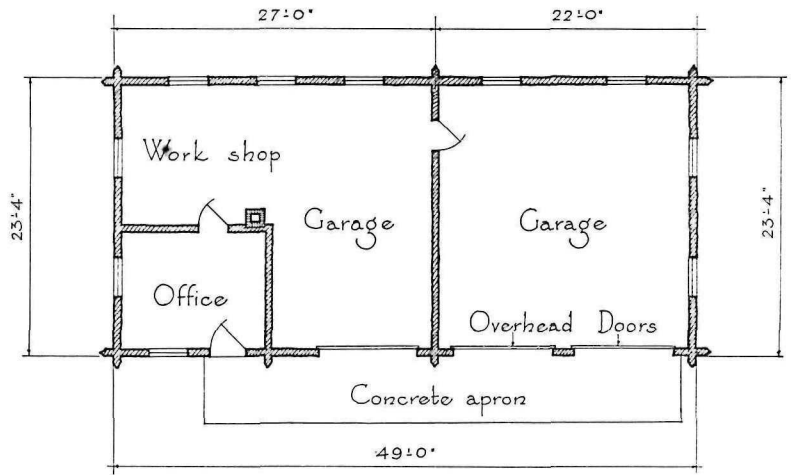
This little building has been allowed to stray from its logical location in this book with geographical justification. Though it is a pumphouse, it is shown here with its near neighbors of an equipment and maintenance group to illustrate at full length the harmony which derives from the employment of similar materials and one architectural expression for a group of related structures.



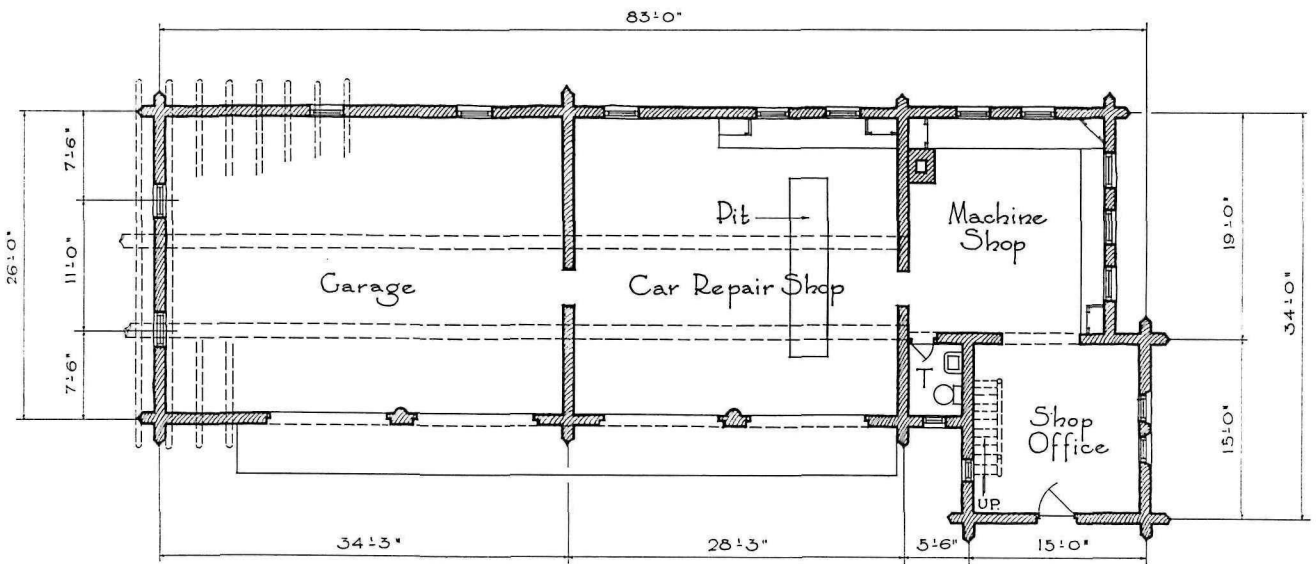
Utility Building, Riverside State Park, Washington



Scenic State Park - Minnesota



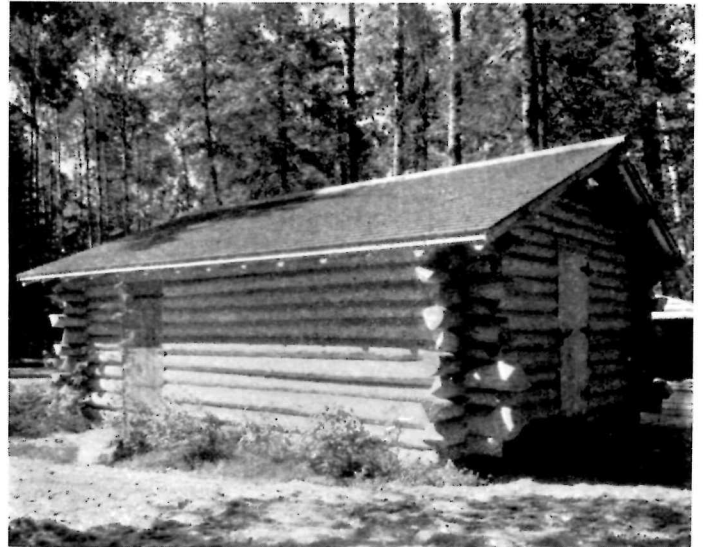
Scenic State Park - Minnesota



Itasca State Park - Minnesota

Scale $\frac{1}{16}'' = 1'-0''$

A little building of humble purpose, glorified by the excellent log work that is almost the invariable accomplishment in Minnesota parks. The projecting logs at the corners keep within allowable limits of rakishness and enliven the general effect. The ridge, capped with pole, and other details should be noted. Ice, wood, and tools are stored in the building. The walls and roof of the section allotted for ice storage are lined with insulating material.



Wood and Ice House, Scenic State Park, Minnesota

An equipment and maintenance building which is obviously close kin to the wood and ice storage building of this same park. The family traits of selected, straight logs and high craftsmanship in joinery are unmistakable. When all park structures built for public view exemplify the sturdy forthrightness of these mere facilitating buildings, much existing construction will have been replaced.

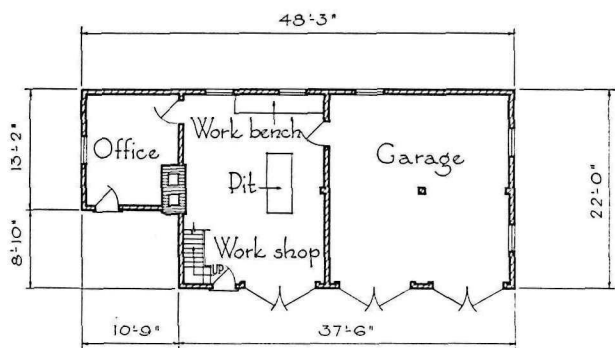


Garage, Scenic State Park, Minnesota

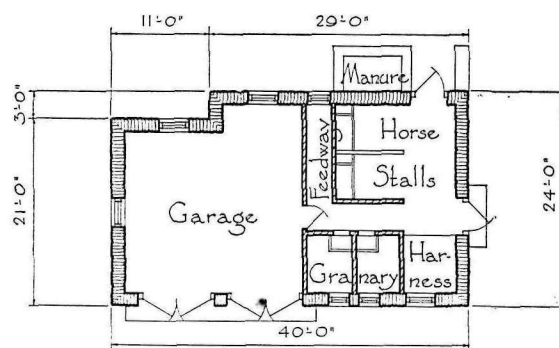
Where construction is so skillfully executed as here, one regrets that its functions and its construction materials combine to produce fire hazards far above the average. The two-story portion contrives to suggest a blockhouse form, but it will be seen that the overhang is instead an optical illusion. The building is too sightly a structure to be allowed to remain long without the added benefit of some foundation planting where this is possible.



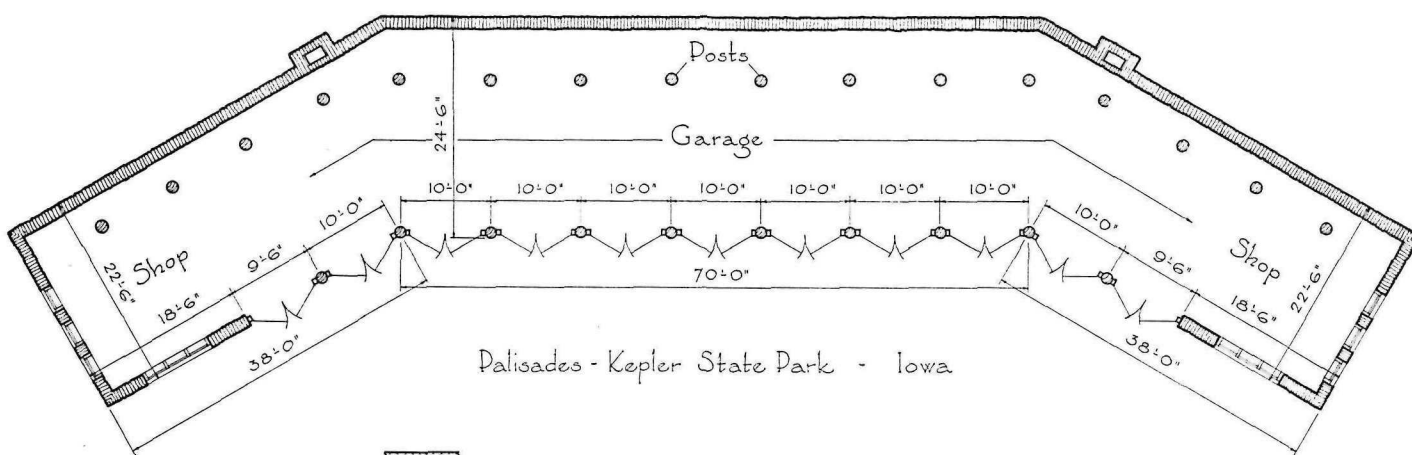
Equipment Building, Itasca State Park, Minnesota



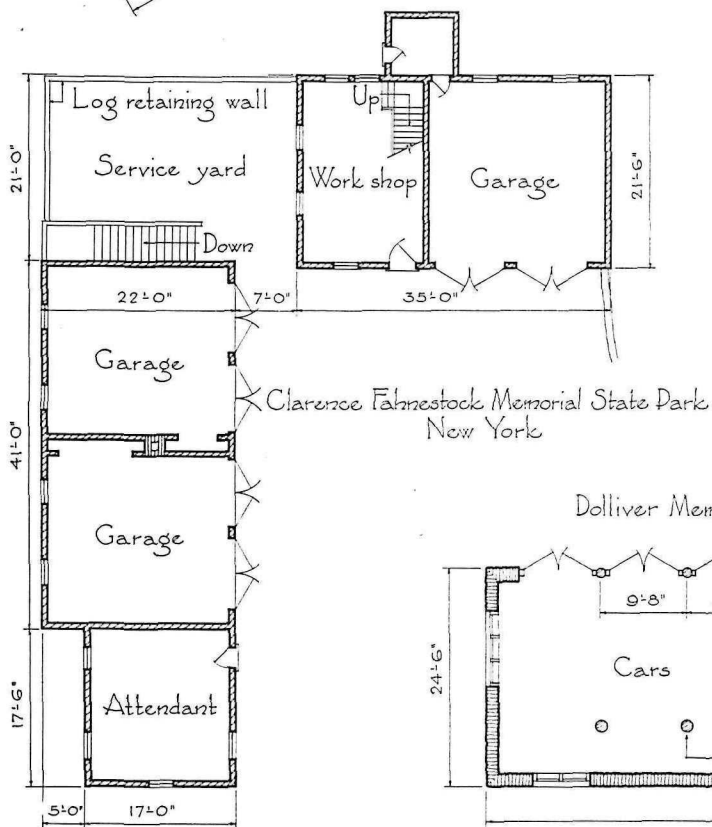
Levi Jackson Wilderness Road State Park - Kentucky



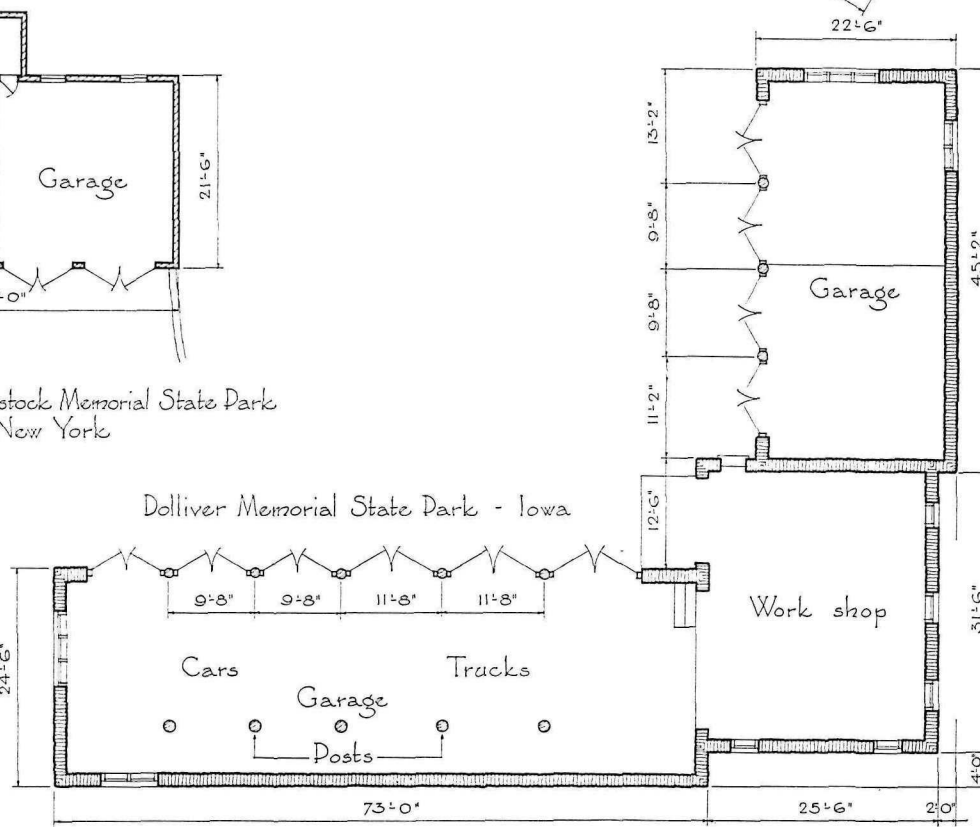
Pilot Knob State Park - Iowa



Dalisades - Kepler State Park - Iowa



Clarence Fahnestock Memorial State Park
New York

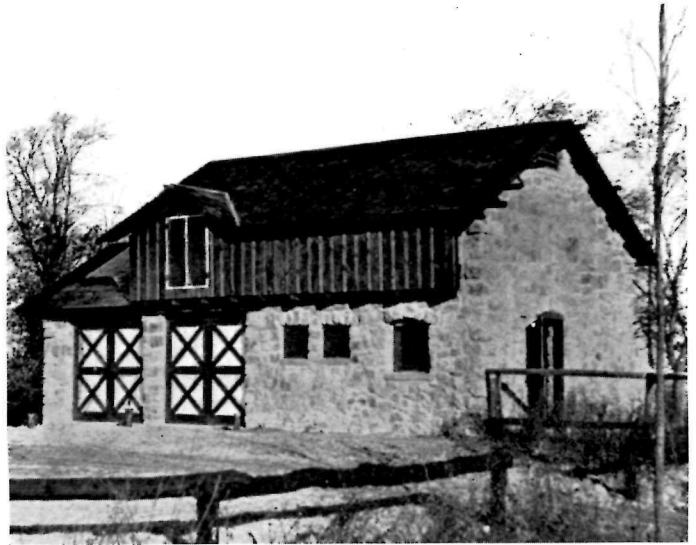


Dolliver Memorial State Park - Iowa

Scale 3/4" = 1'-0"



Levi Jackson-Wilderness Road State Park, Kentucky



Pilot Knob State Park, Iowa

THE SERVICE QUADRANGLE IN DEVELOPMENT

The small Iowa and Kentucky examples illustrated above are typical of the modest beginnings of storage facilities for maintenance materials and equipment in connection with a caretaker's group in a small park. The other three here shown well illustrate the tendency to expand, inherent in service buildings. Happily, the two at the bottom of the page suggest expansion along recommended lines—to an eventual equipment and maintenance courtyard or enclosure.



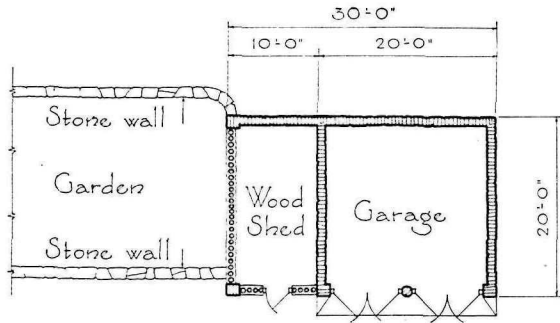
Palisades-Kepler State Park, Iowa



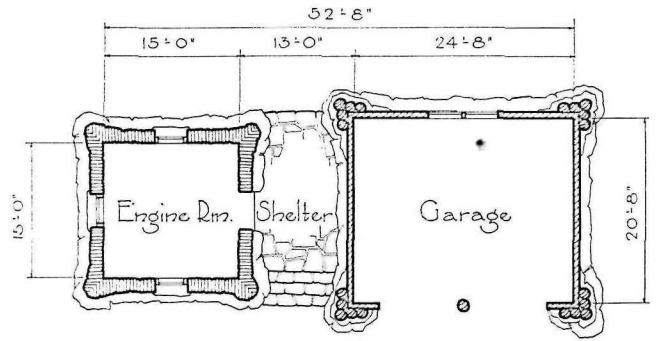
Clarence Fahnestock Memorial State Park, New York



Dolliver Memorial State Park, Iowa

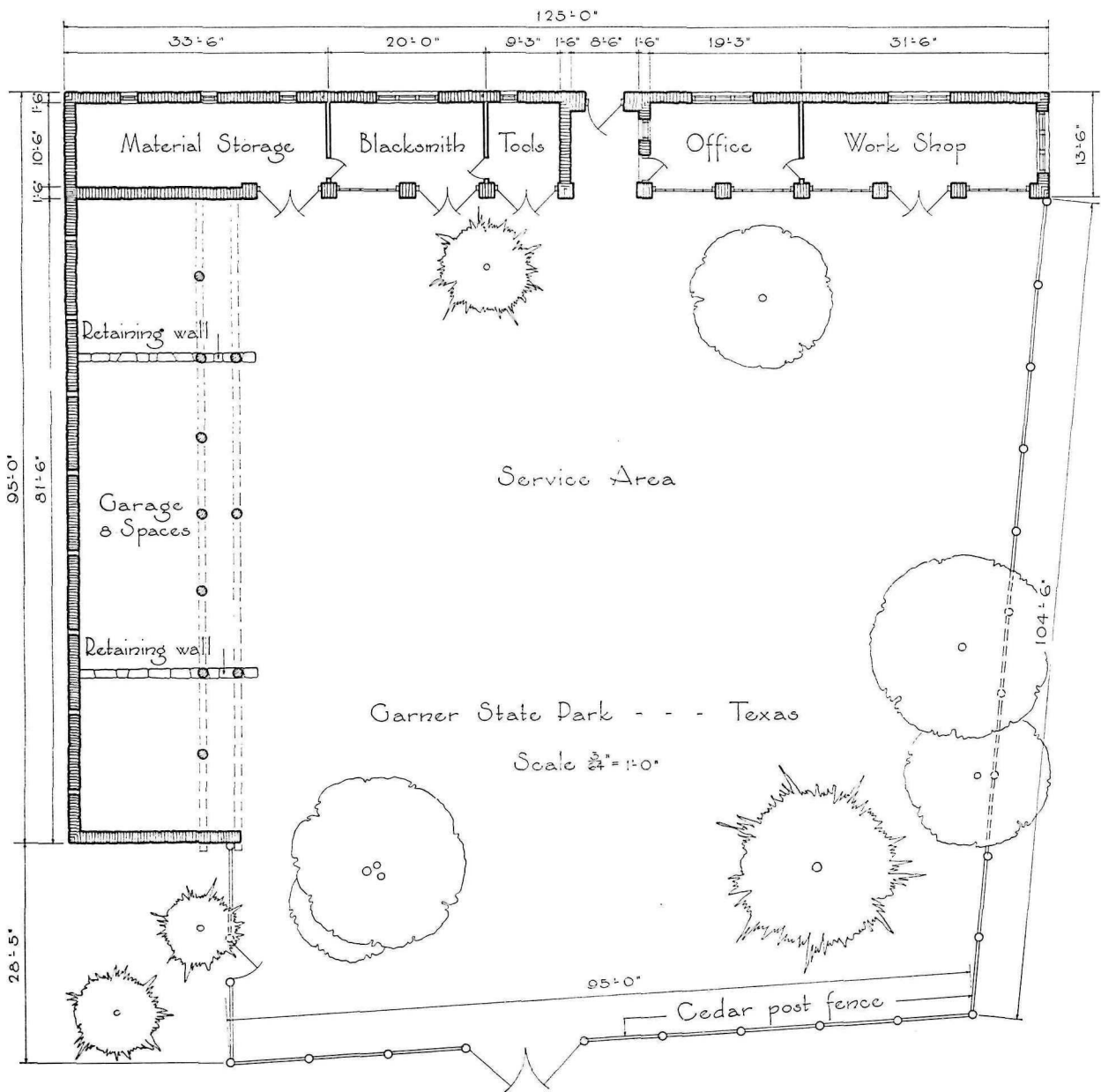


Palomar Mt. State Park - California



Boyle Metropolitan Park - Arkansas

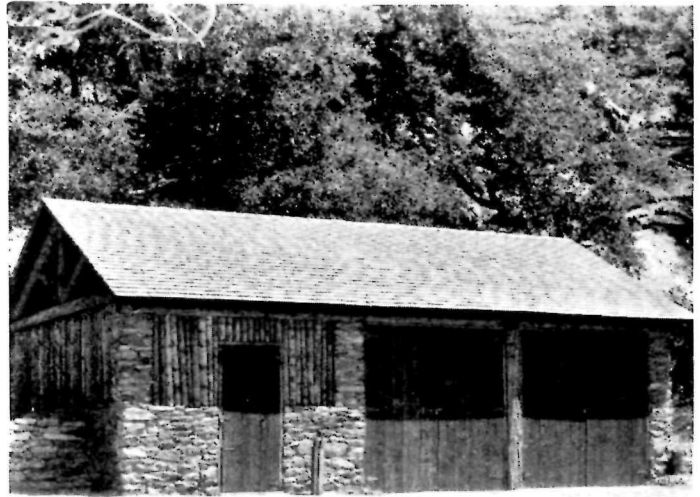
Scale 1/4" = 1'-0"



Garner State Park - - - Texas

Scale 1/4" = 1'-0"

Again is presented a garage building with storage space meeting in general a custodian's needs in a park. There is novelty in the combination of stone masonry and vertically placed slender poles serving as curtain wall. Depreciative of the total effect of the building is the flat, thin roofing, too meticulously laid to be completely harmonious with the setting.



Custodian's Garage, Palomar Mountain State Park, California

This spirited rendering of a custodian's garage departs from the typical in its link with a pumphouse and water storage tank. There is a surprising variety of materials in this design. The texture of the shake roof and the batter of the rude rock base, suggesting a sparing use of mortar, are details of great interest.

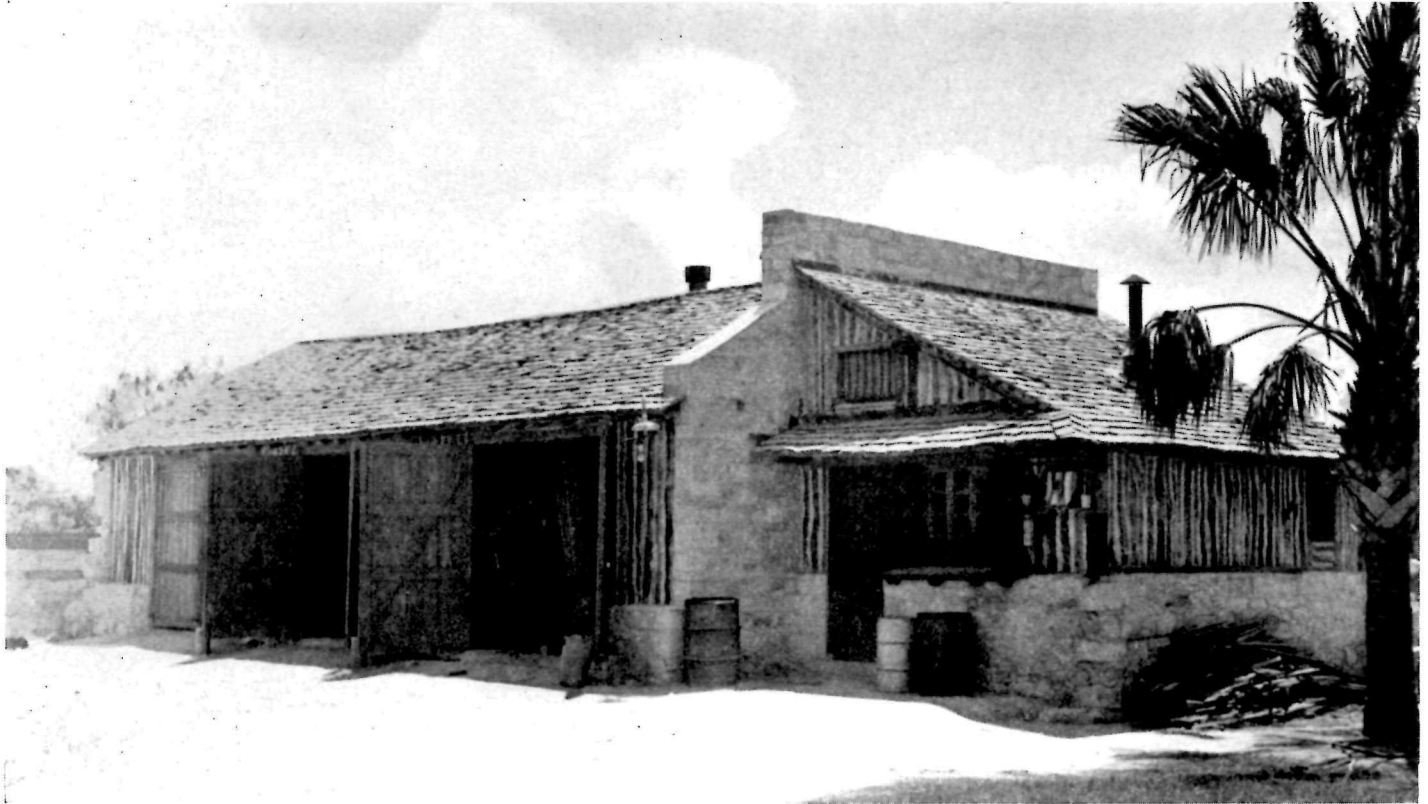


Custodian's Garage, Boyle Metropolitan Park, Little Rock, Arkansas

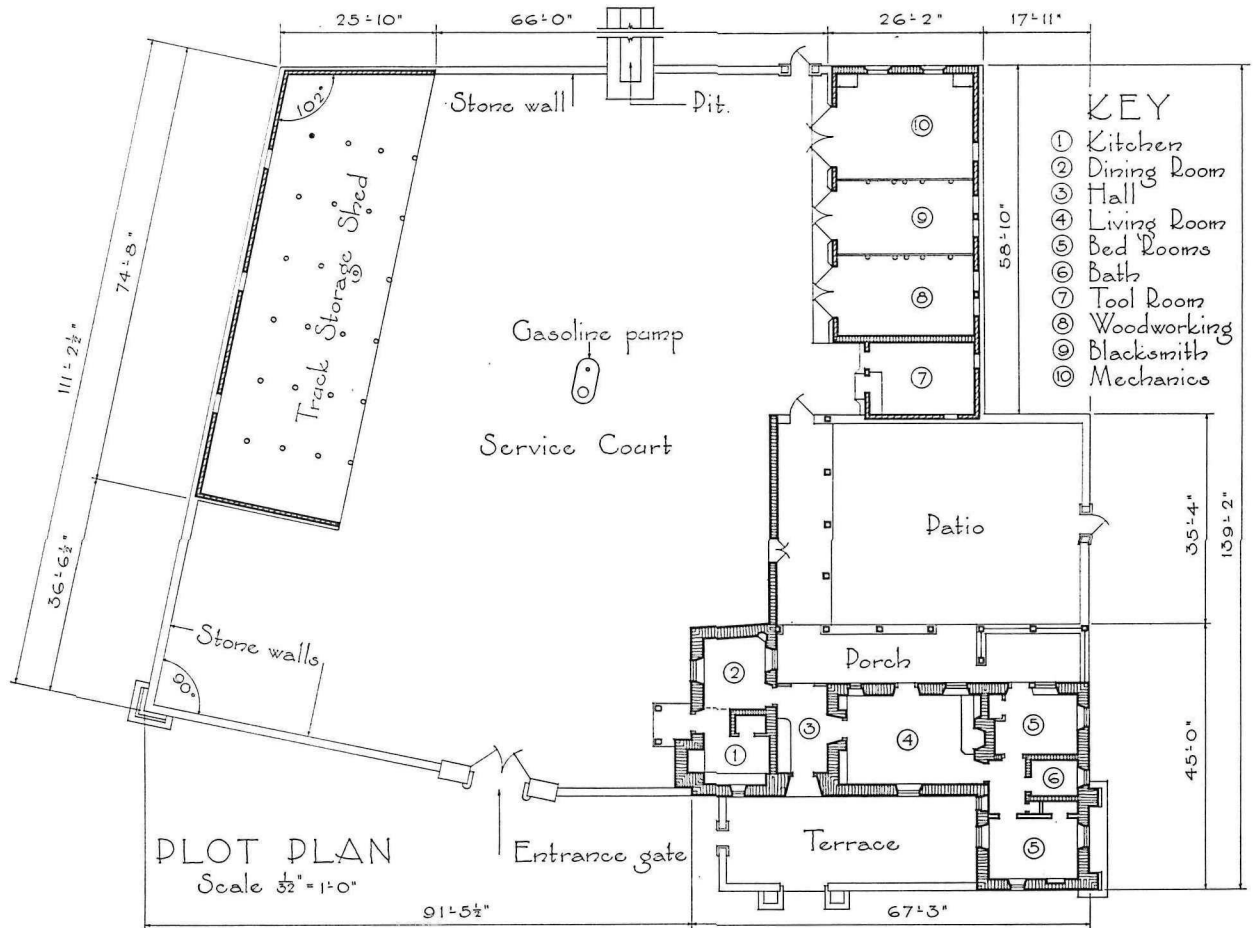
The case for the equipment and maintenance courtyard or enclosure rests on this exhibit and two which follow. In this instance equipment sheds supply one side of the quadrangle, shops, another. Palisade fence completes this "introvert" lay-out, which safeguards the public's right to a park area unblemished by long-range views of gaping garage doors, mechanical equipment, and other such disillusioning paraphernalia.

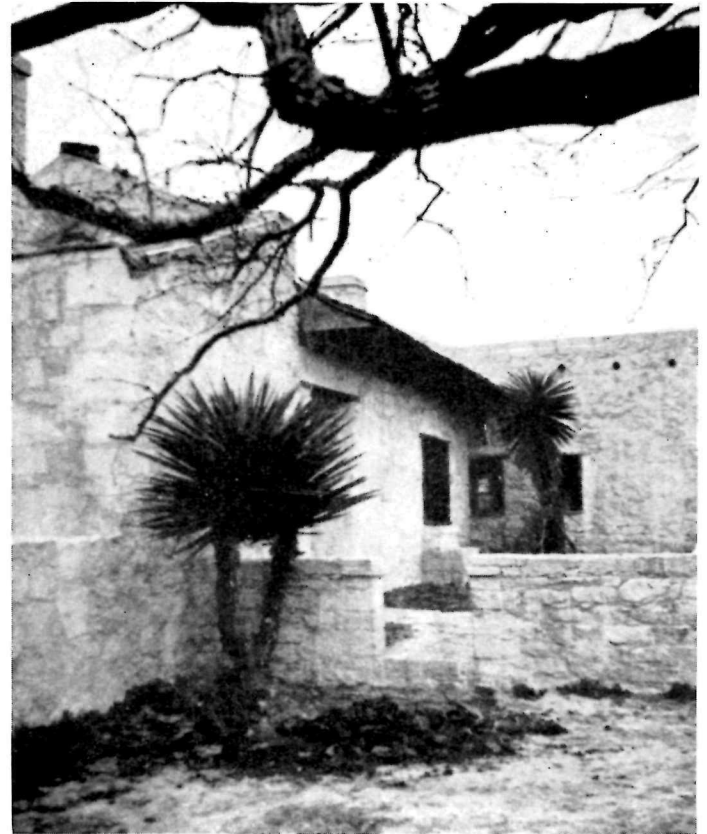
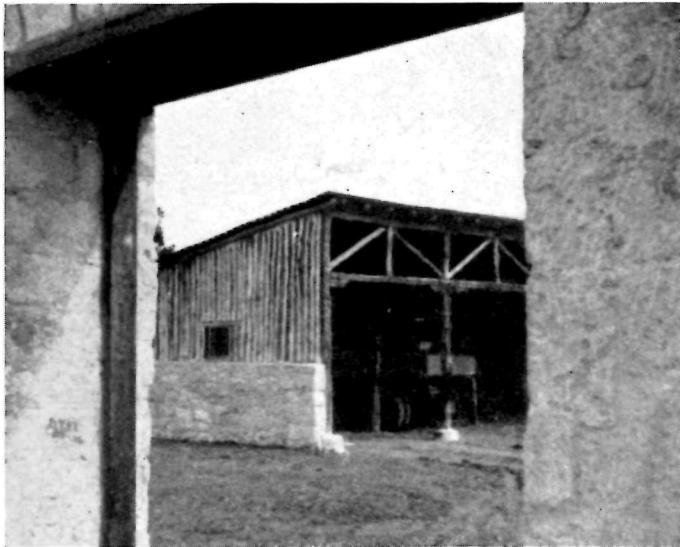


Service Group, Garner State Park, Texas



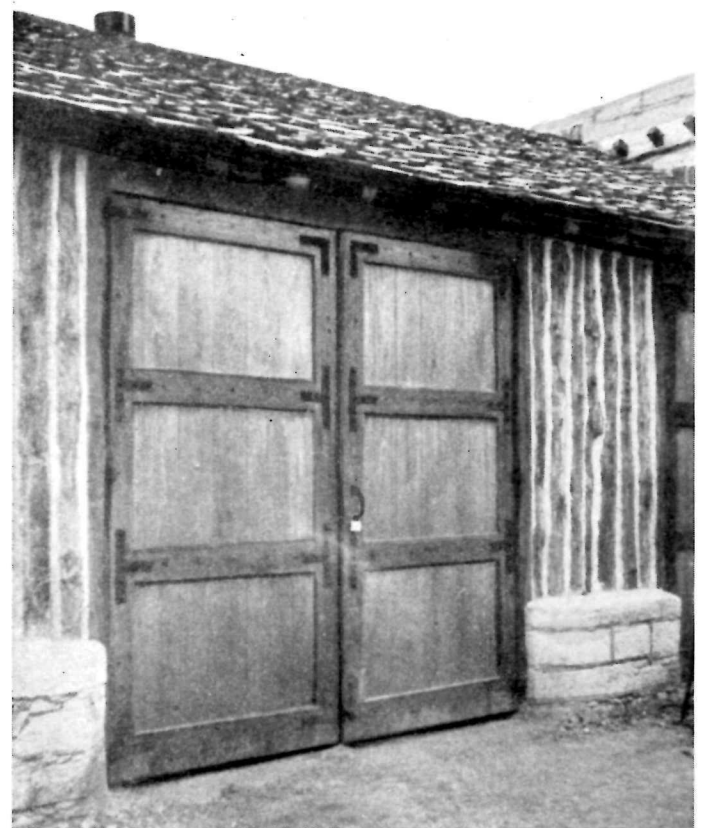
Service Group, Goliad State Park, Texas





SERVICE GROUP IN EXTENSO,
GOLIAD STATE PARK, TEXAS

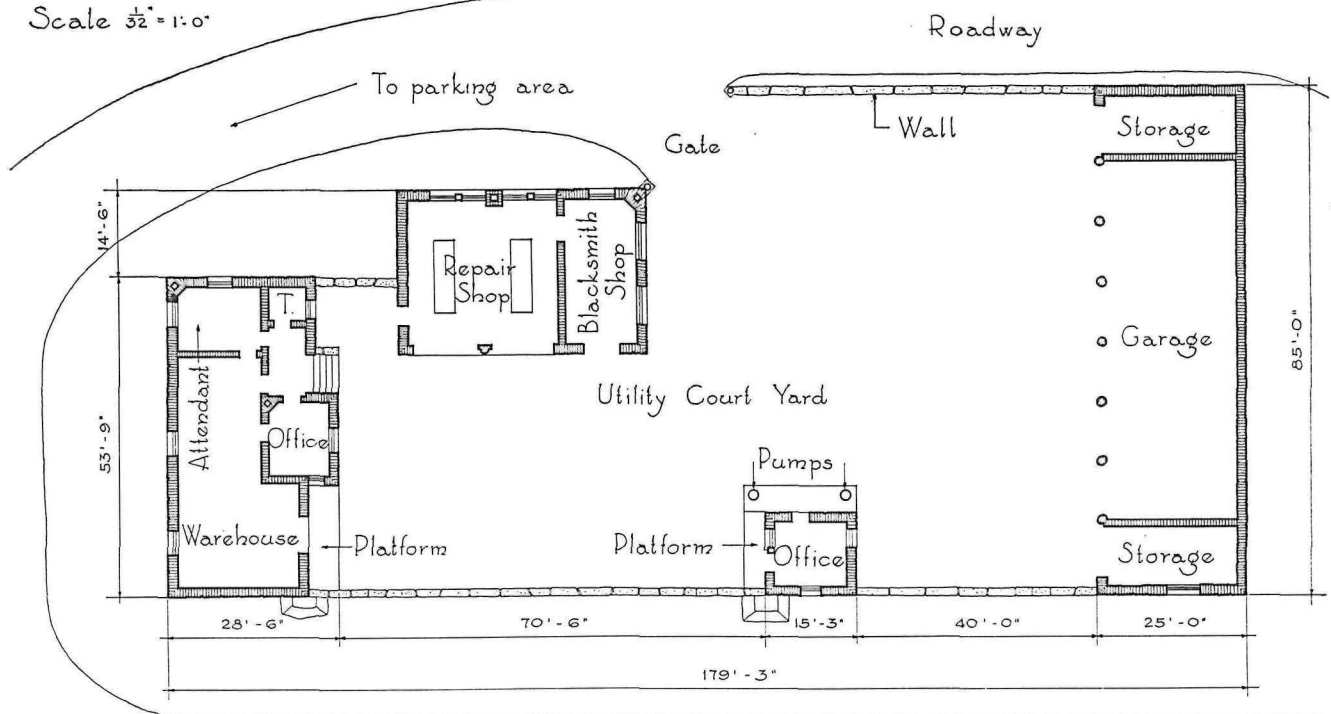
Not content with supplying a full complement of structural units for equipment and maintenance needs, and connecting with the caretaker's house in a logical plan arrangement, this service group arrays itself with exquisite care in the traditional south Texas architecture that characterizes the dwelling. In a general prevalence of a certain "down-at-heelness" among buildings meeting these needs in parks, the nice attention here lavished on detail is as welcome as it is startling.





Service Group, Bandelier National Monument

Scale $\frac{3}{32}'' = 1'-0''$



The sufficient-unto-itself service yard enclosure as it has found expression on a national area. Necessary buildings and connecting walls close in a work yard promising comparative freedom from interruptions by a curious public, as well as from pilfering.

Certain minor elements of the plan wait upon future construction although the plan fails to disclose this fact. The simple character of the stuccoed buildings and walls seems very suitable to the location in the Southwest.