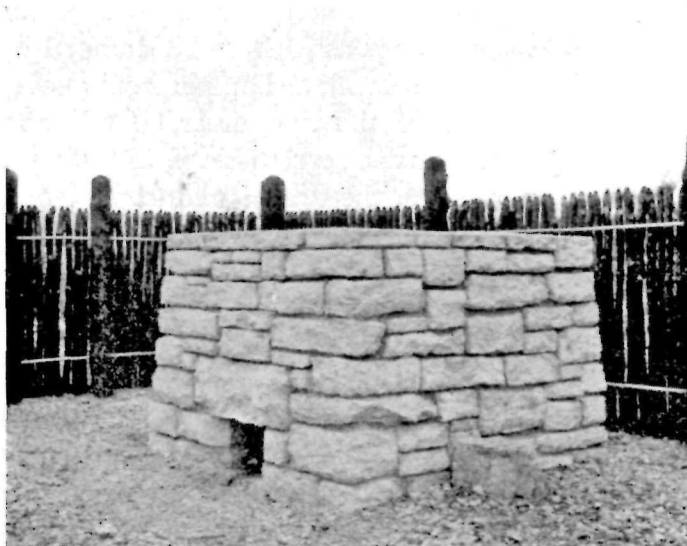
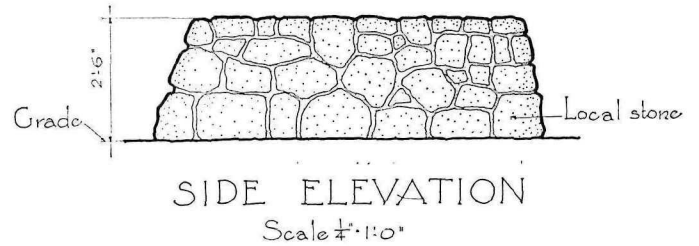
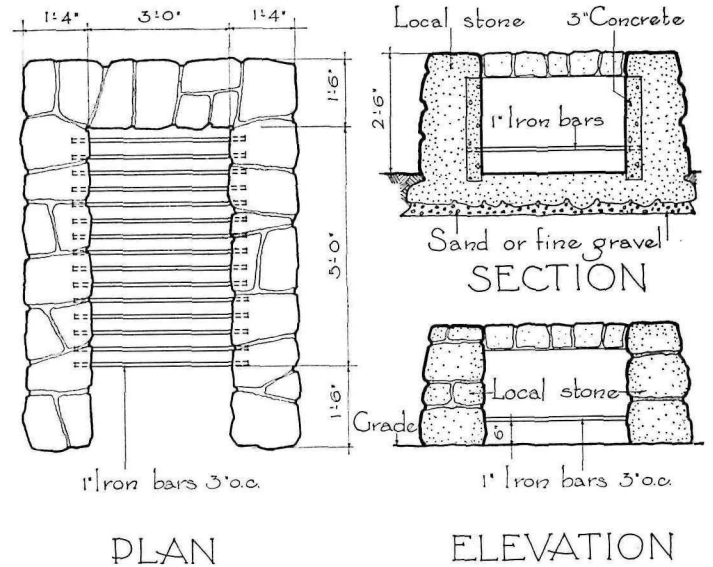




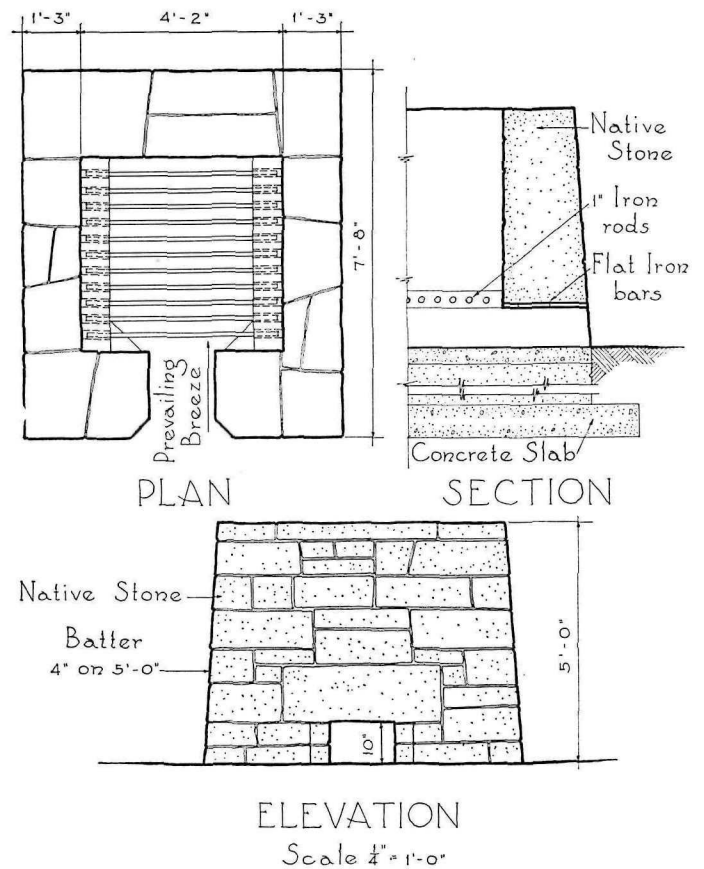
*Incinerator, Fargo Metropolitan Park, North Dakota*

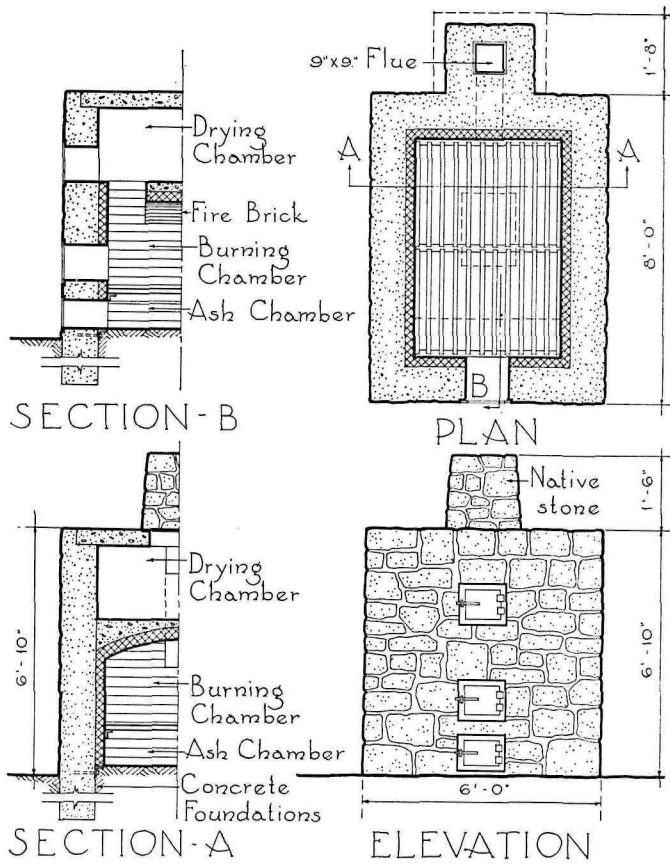
The most elementary form of incinerator is this type. It is merely picnic fireplace of exaggerated size. The examples on this page are more restricted in capacity than those which follow. The open top incinerator is not adapted to regions of heavy rainfall.



*Incinerator, Bonham State Park, Texas*

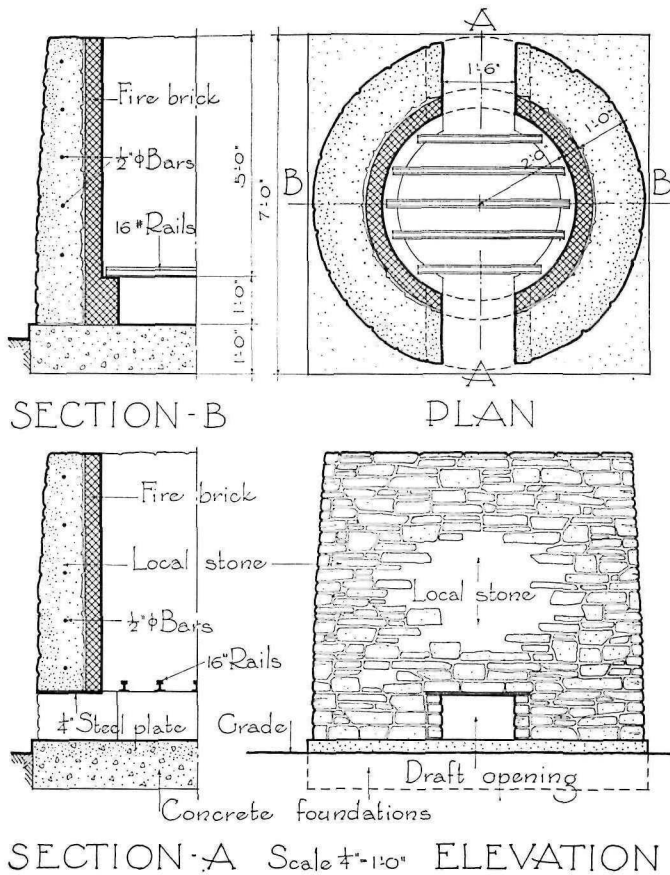
An exceedingly simple design in which the drying out of wet refuse before burning is probably accelerated by the open top. The illustration shows a fence of good park character which hides from public view the disposal of rubbish and unsightly service items—supplies, equipment, and the like.





*Incinerator, Backbone State Park, Iowa*

Although of moderate size for a park incinerator, this one buries from sight some of its bulk by reason of its hillside location. Important aid to complete combustion is the draining and drying of the collected refuse prior to firing, here provided for. The surroundings suggest that draft may be hampered by the woods growth.



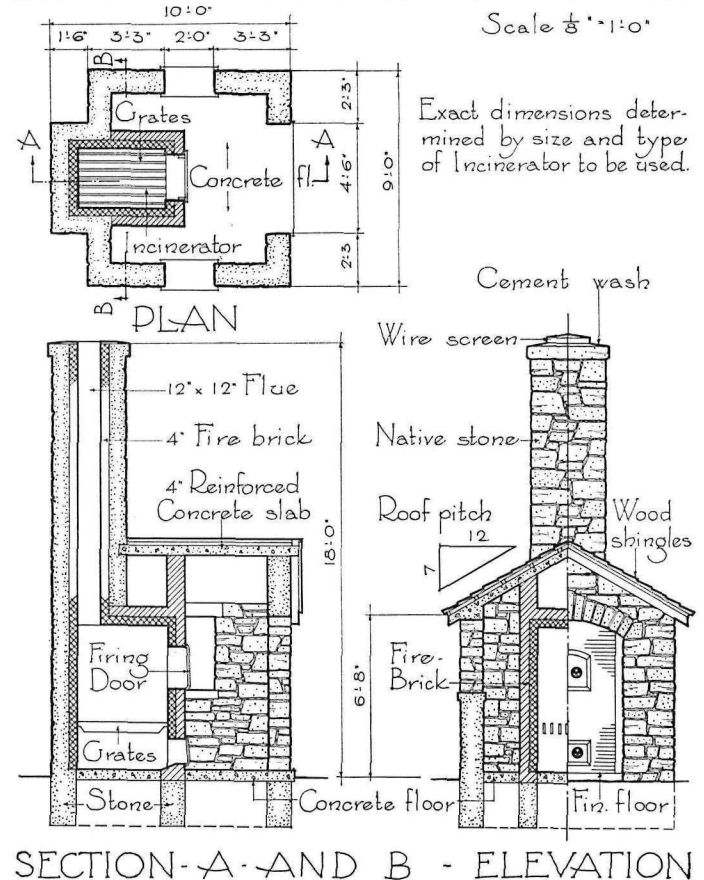
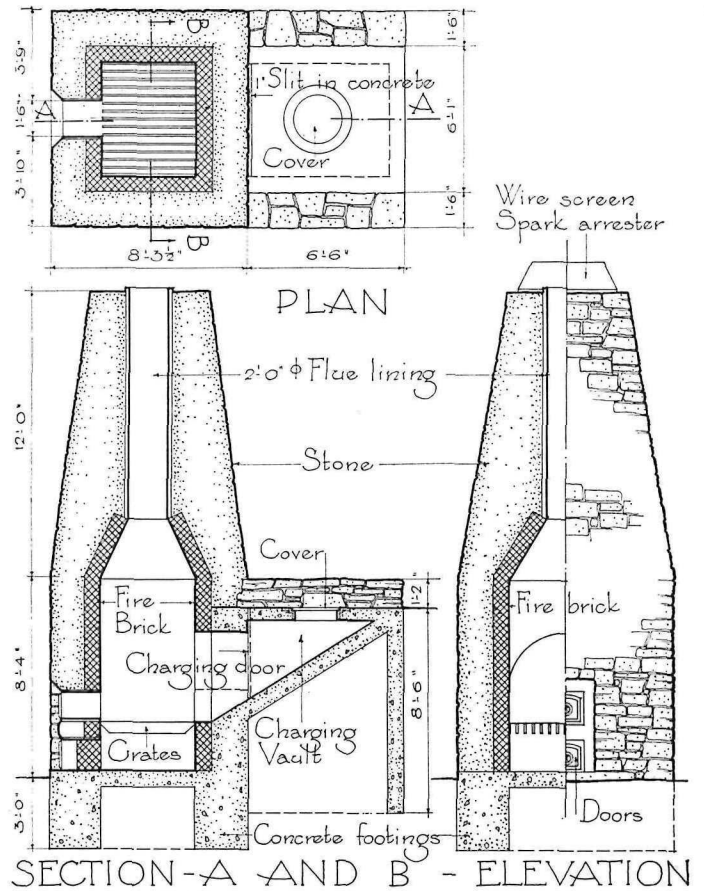
*Incinerator, Taughannock Falls State Park, New York*

The refuse is lowered into this circular incinerator from the level of truck or wagon, approach for which is supplied by the concrete pavement to the left of the unit. This design is not unsightly in appearance and provides large capacity. A well-cleared site insures an adequate draft for this example.



*Incinerator, Sharon Woods, Cincinnati, Ohio*

Monumental in size, and almost so in its character, is this utilitarian incinerator. It is fed directly from refuse collection trucks which reach the charging door by means of the elevated earth ramp. The capacities of this chimneyed facility and the one below greatly exceed those of the previously shown examples.



*Incinerator, Audubon Memorial State Park, Kentucky*

The soaring chimney is considerably softened by the roofed structure at its base which houses the incinerator itself and provides shelter for attendant operating it. The charging of the unit is from the front wall, not overhead opening as in the example above. The wire-screen spark arresters that equip both units are important safeguards.