



*Platt National Park*



*Ludington State Park, Michigan*



*Loveland Mountain Metropolitan Park, Colorado*

CROSSINGS AND CULVERT TREATMENTS

The crossings illustrated above give indication of the possibilities for picturesqueness in such a facility. Of particular interest is the crossing of stepping stones meeting the well-executed flight of trail steps on the brook bank in Platt National Park. The marsh crossing provided by wood piling at Ludington State Park is novel.

A casual, natural appearance is rather general in the culvert treatments shown on these facing pages. In several the presence of this not easily attained quality is marked. In fact, these culvert



*Bronx River Parkway, New York*



*Boyle Metropolitan Park, Little Rock, Arkansas*

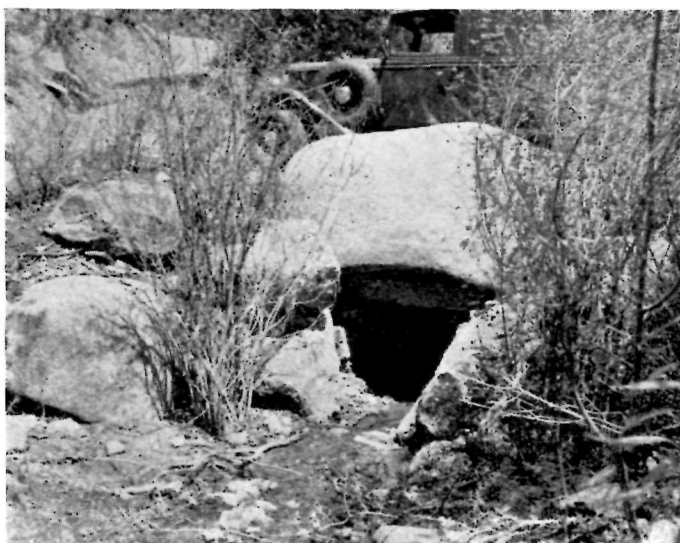


*Hereford State Park, Texas*



*Lake Murray State Park, Oklahoma*

treatments scarcely classify or are recognizable as culvert head walls except in two illustrations at lower right. It should be realized that it has been necessary to include in this collection many culvert head walls almost at the moment of their structural completion, and that these stand to benefit greatly from the toning influence of a return of natural vegetative growth. In presenting some in their new-born nakedness there is at least the compensatory advantage of disclosing their structure in maximum.



*Loveland Mountain Metropolitan Park, Colorado*



*Spavinaw Hills State Park, Oklahoma*



*Roman Nose State Park, Oklahoma*



*Spavinaw Hills State Park, Oklahoma*



*Robbers Cave State Park, Oklahoma*



*Arbuckle Trail, Oklahoma*

CULVERT HEAD WALL INTO CULVERT-BRIDGE

The masonry head wall of the minor culvert usually employs the lintel to bridge the span. It will be seen that the lintel is sometimes assisted by corbeling, as in the example from the Arbuckle Trail, or by a suggestion of relieving arch, as at Vogel State Park, before the segmental arch in the example from the Blue Ridge Parkway appears. Here revived in miniature are the architectural milestones between the stone age and Imperial Rome. The bottom row of illustrations indicates a



*Beavers Bend State Park, Oklahoma*



*Arbuckle Trail, Oklahoma*





*Lake Corpus Christi State Park, Texas*



*Wyandotte County Park, Kansas*

solution where heavy flow of surface water will overtax a single culvert.

At upper right is more than culvert, less than bridge—probably culvert-bridge is a fitting term for it. On the following page will be seen more of these, ranging from a finished character to rocky treatments suitable to mountainous terrain. In a majority the arch appears in full development, and the blending of head wall to site is generally very skillfully executed.



*Vogel State Park, Georgia*



*Lake Worth Metropolitan Park, Fort Worth, Texas*



*Blue Ridge Parkway, North Carolina*



*Mount Vernon Memorial Highway*



*Hillcrest Park, Durango, Colorado*



*Longhorn Cavern State Park, Texas*



*Wyandotte County Park, Kansas*



*Lake Murray State Park, Oklahoma*



*Lake Murray State Park, Oklahoma*