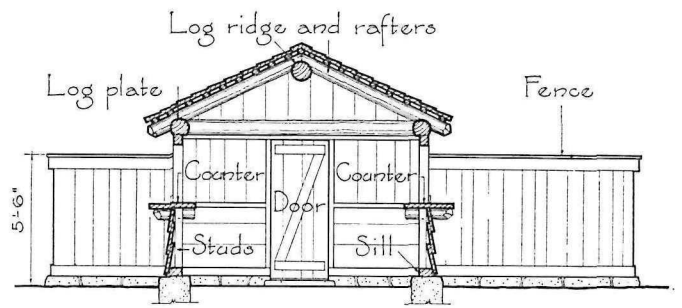




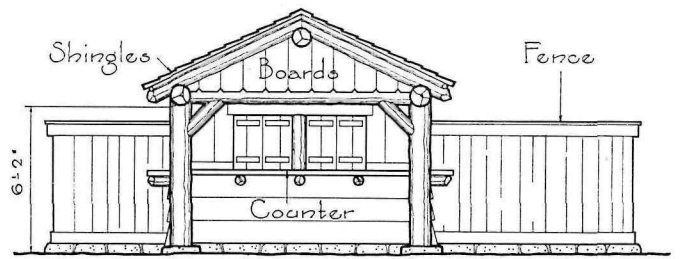
Minor Concession

Boyle Metropolitan Park - Little Rock, Arkansas

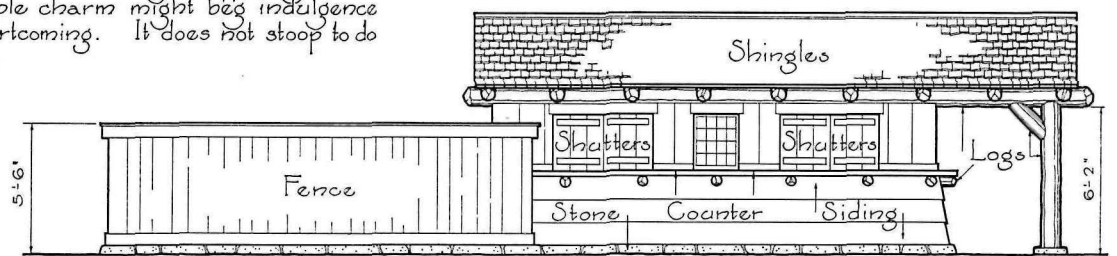
Here is vibrant personality in structure achieved through economy of kind, but certainly not of scale, in the materials used. The result is convincing of the fact that the measure of a supremely satisfying building is not to be taken in terms of cost. A little building so appealing to the eye by reason of its simple charm might beg indulgence for many a practical shortcoming. It does not stoop to do so however in any detail.



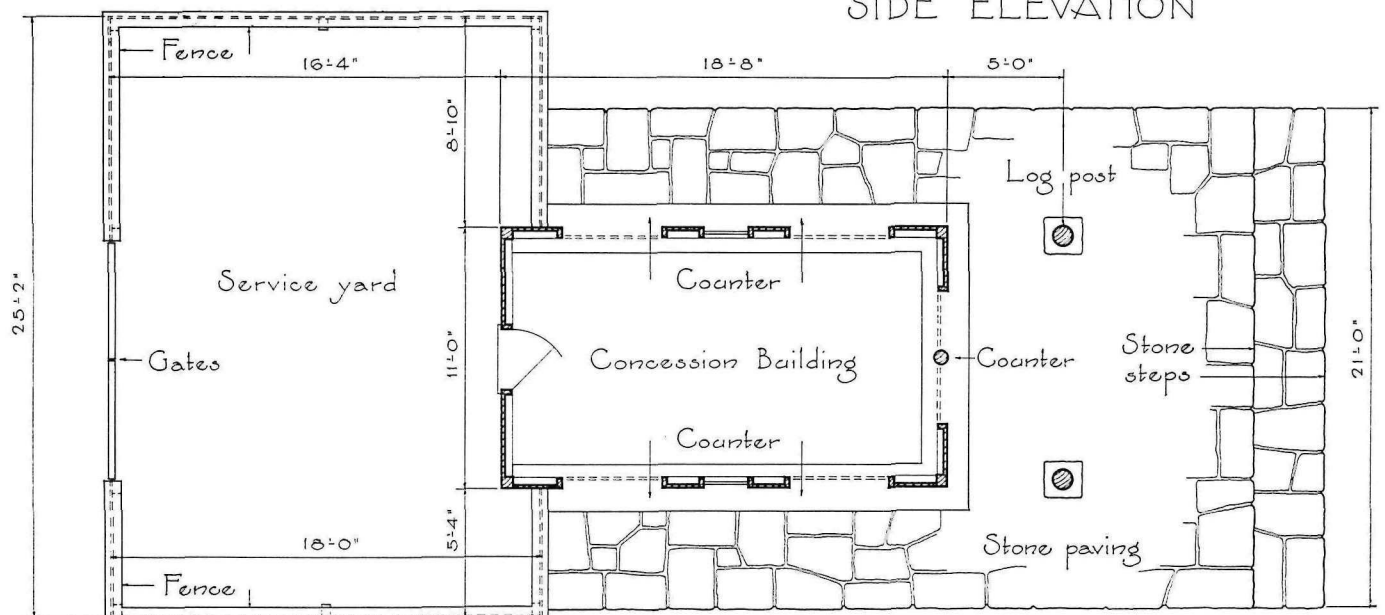
SECTION



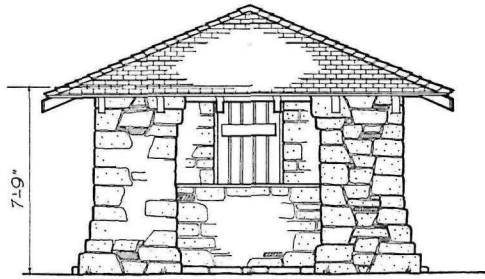
FRONT ELEVATION



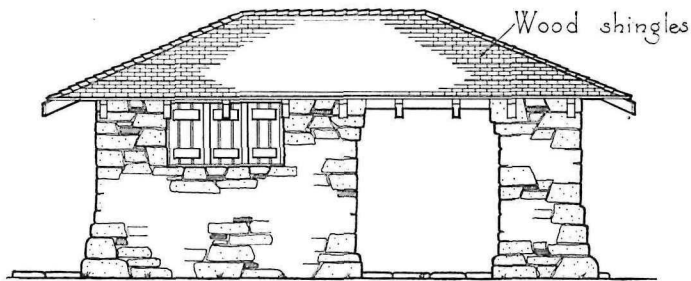
SIDE ELEVATION



PLAN
Scale 1/8" = 1'-0"



FRONT ELEVATION

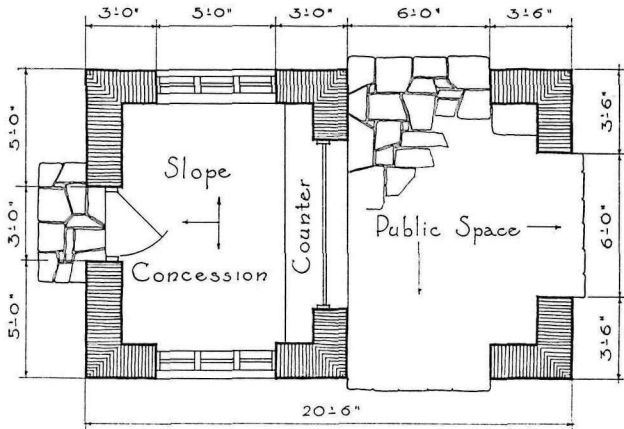


SIDE ELEVATION

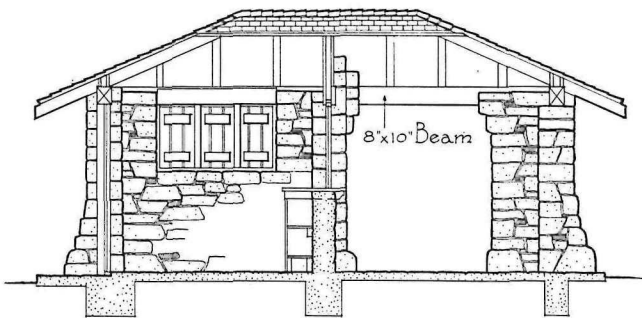


Small Concession Building - Lampasas State Park - Texas

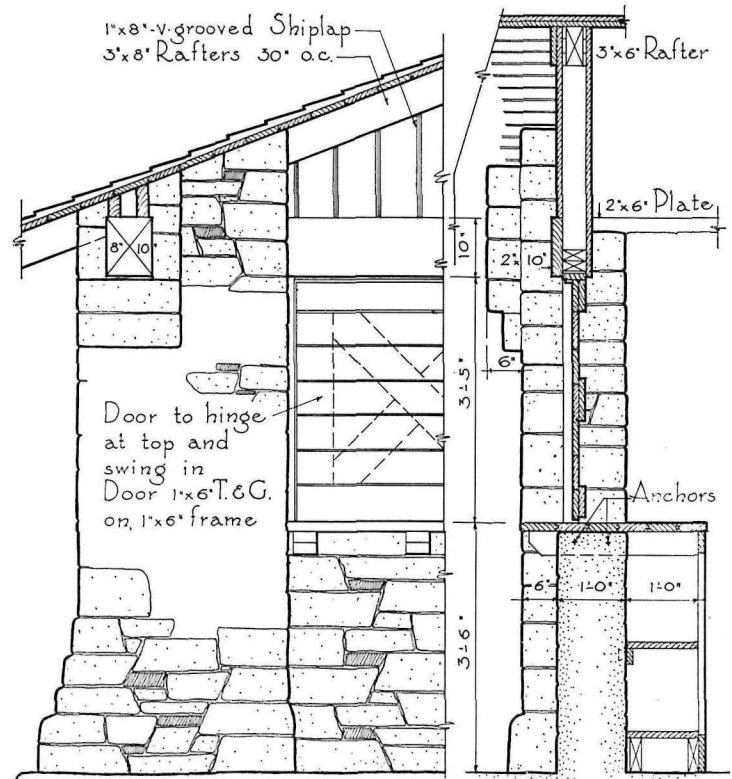
A concession stand that is not so regional in character as to deny inspiration over a wide area. Recommended to the attention of proponents of highway improvement who would kennel the hot dog in greater grandeur. The texture of the stone masonry is worthy of note.



FLOOR PLAN



SECTION



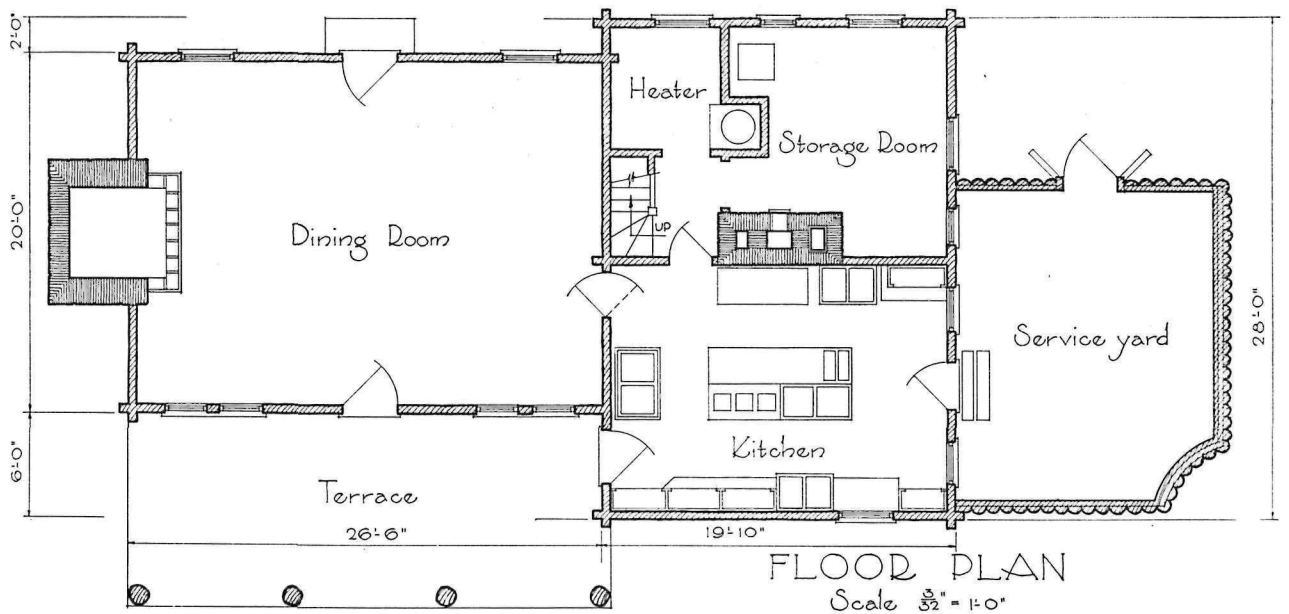
DETAIL OF COUNTER

Scale $\frac{3}{8}'' = 1'-0''$

Scale $\frac{1}{8}'' = 1'-0''$



Refectory, New Salem State Park, Illinois

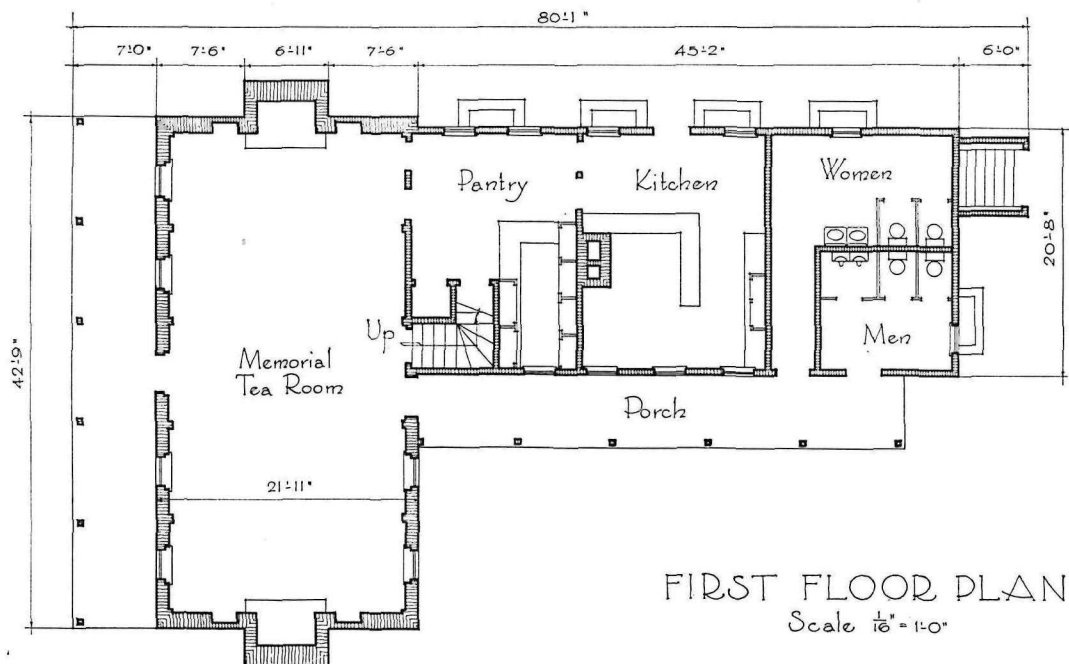


Here is a concession building in which it was sought to re-create a tavern typical of an Illinois backwoods village of the early 1800's. Located on a street lined with log dwellings of the period, and almost directly opposite the little frame

building in which Abe Lincoln "kept store", it represents a sincere and successful attempt to clothe appropriately a valid park need. Views of other buildings of the reconstructed village will be found elsewhere herein.



Refectory, "Duck Hall House", George Washington Birthplace National Monument

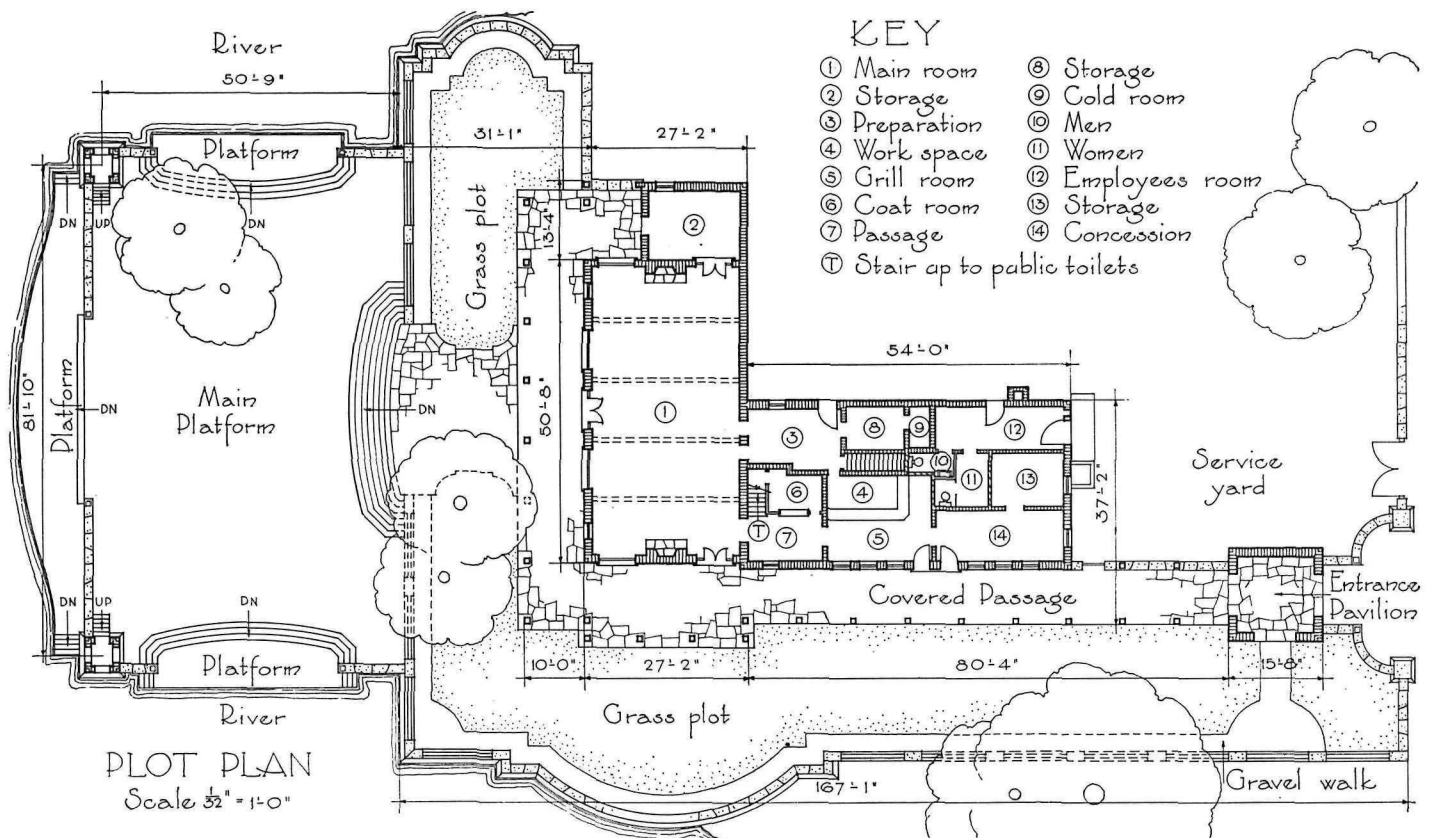


Designed to harmonize with the architecture of rebuilt Wakefield, this tearoom well exemplifies the stylized and more finished structures that

have place in parks. The inspiration of Yorktown and Williamsburg and intelligent adaptation are evident. Edward W. Donn, Jr., architect.



Refectory, Margaret Lewis Norrie State Park, New York

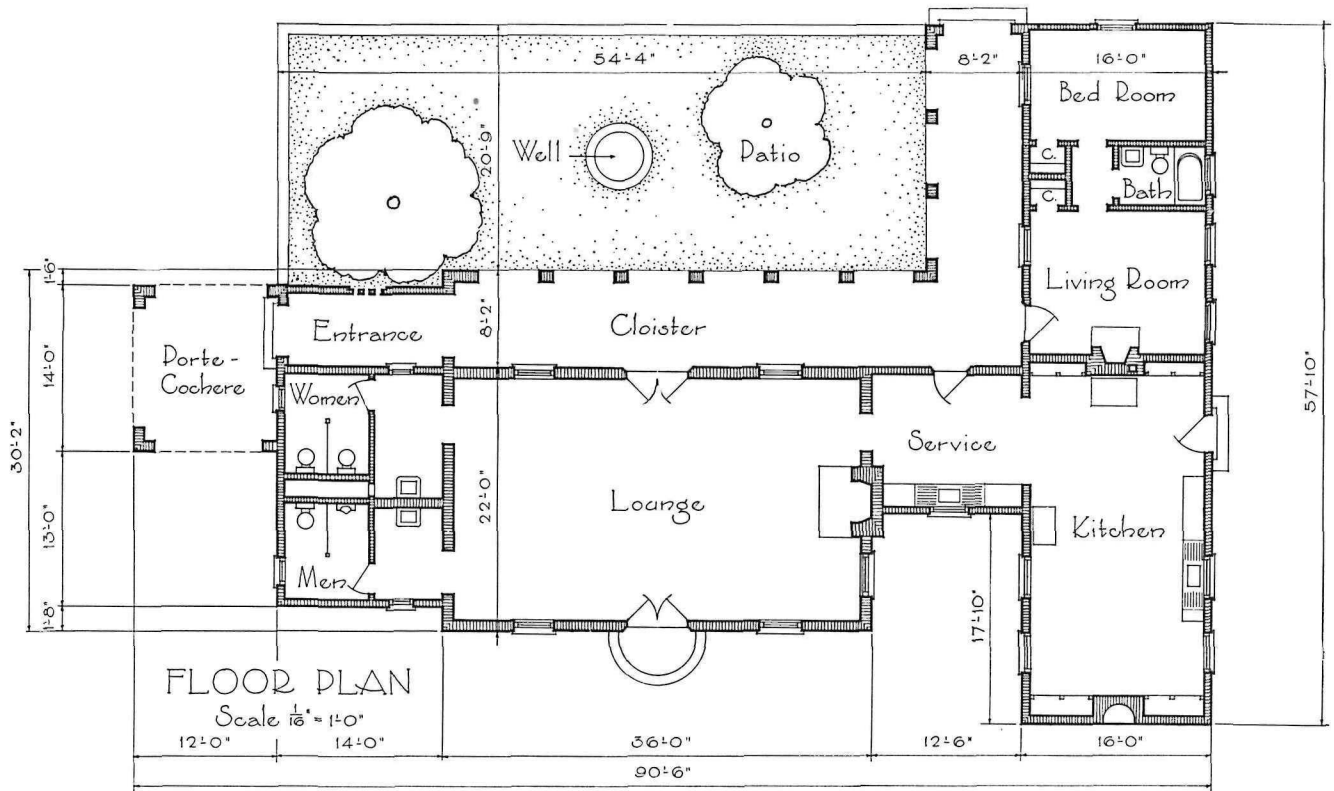


This attractive combination building is on the east bank of the lordly Hudson, in a park surrounded by a populous and extensively developed countryside fringing a metropolitan area. Locale

thus explains and justifies a more finished character in structure than is general in parks termed natural. The broad water-front terrace actually provides for landing from small river craft.



Refectory, Santo Domingo State Park, Georgia

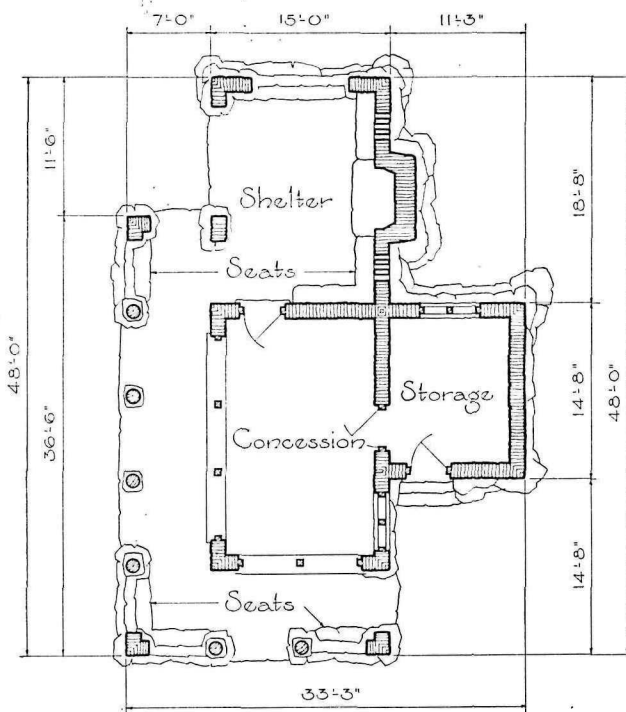


Here is another combination building the architecture of which ranges beyond the usual in natural parks. It gestures toward an interesting

and ancient ruin within the park boundaries, and is, of course, keyed to the architectural style become current along the south Atlantic seaboard.



Refectory, Lake Murray State Park, Oklahoma



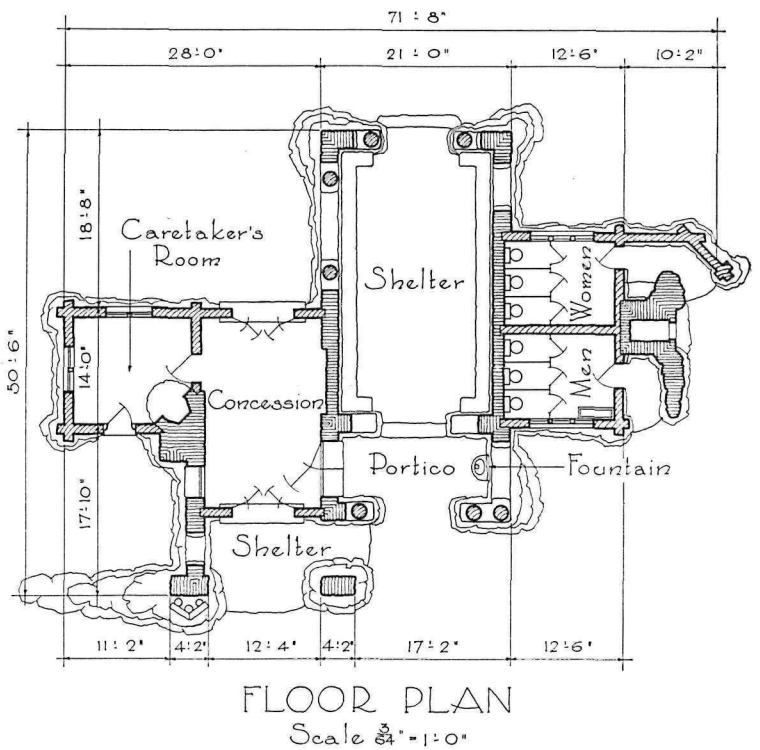
FLOOR PLAN
Scale $\frac{1}{16}'' = 1'-0''$

A concession and shelter combination out of the ordinary in its rambling plan and very practical in the generous storage space it provides. It will be recognized as a formidable contender for the record for size of rocks maneuvered into structure, and not exactly an "also ran" in the matter of freehand quality. The building serves not only picnicking crowds but also the occupants of a group of cabins started nearby. The shelter end overlooks Lake Murray, a large man-made lake.



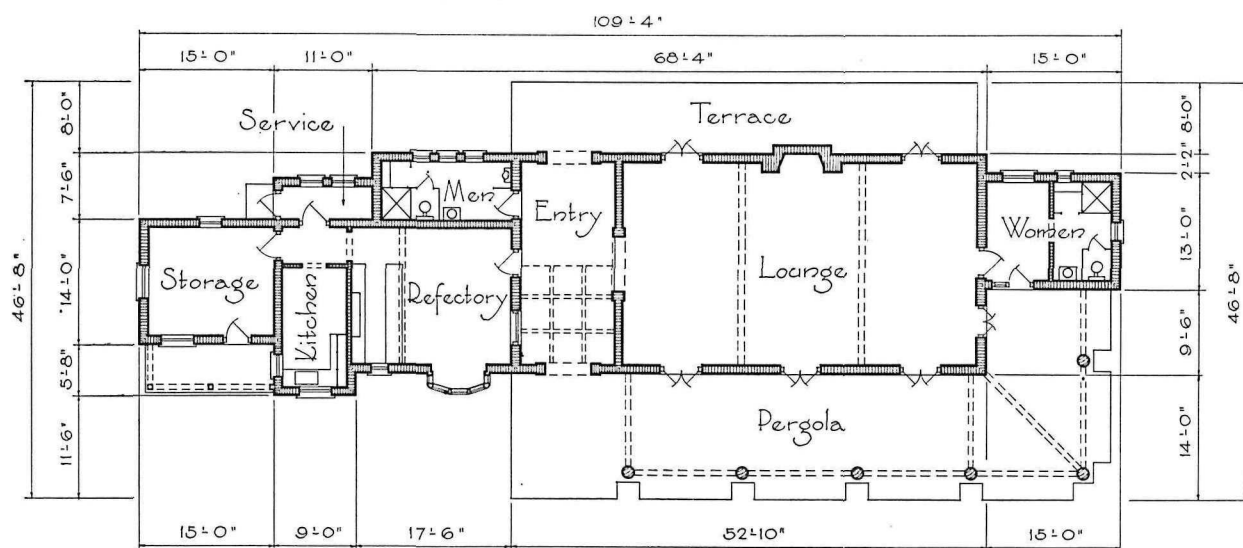
Refectory, Mohawk Metropolitan Park, Tulsa, Oklahoma

The combining of concession and concessionaire's quarters with picnic shelter and comfort stations is not unanimously favored. A tendency to inhibit free use of the public facilities by visitors who are not patrons of the concession is argued. But shelters and comfort stations within range of the watchful eye of a concessionaire suffer less from the abuses of the initial carvers and others than do more isolated facilities, because the concessionaire's own best interest leads him to consider the shelter space and toilet facilities as within his sphere of influence to their considerable benefit in clean-up and condition. In this lay-out an altogether reasonable measure of isolation without loss of the benefits of supervision seems to have been accorded the concession, shelter, and comfort stations.





Refectory, Goose Island State Park, Texas



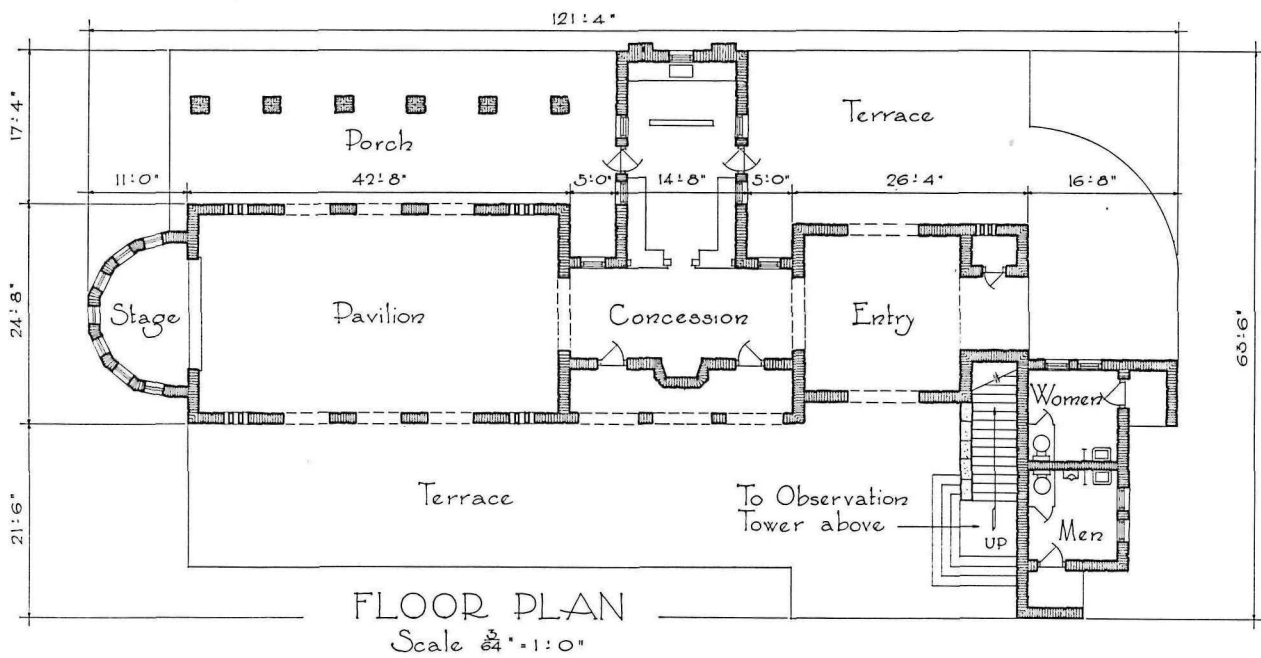
FLOOR PLAN
Scale 3/4" = 1'-0"

Where the refreshment concession occupies a space so comparatively small, the refectory building is perhaps more properly classifiable as a recreation

or community building. At any rate, here is a most satisfying structure, with strong regional flavor in its use of adobe and in its architectural lines.



Refectory, Lake Corpus Christi State Park, Texas

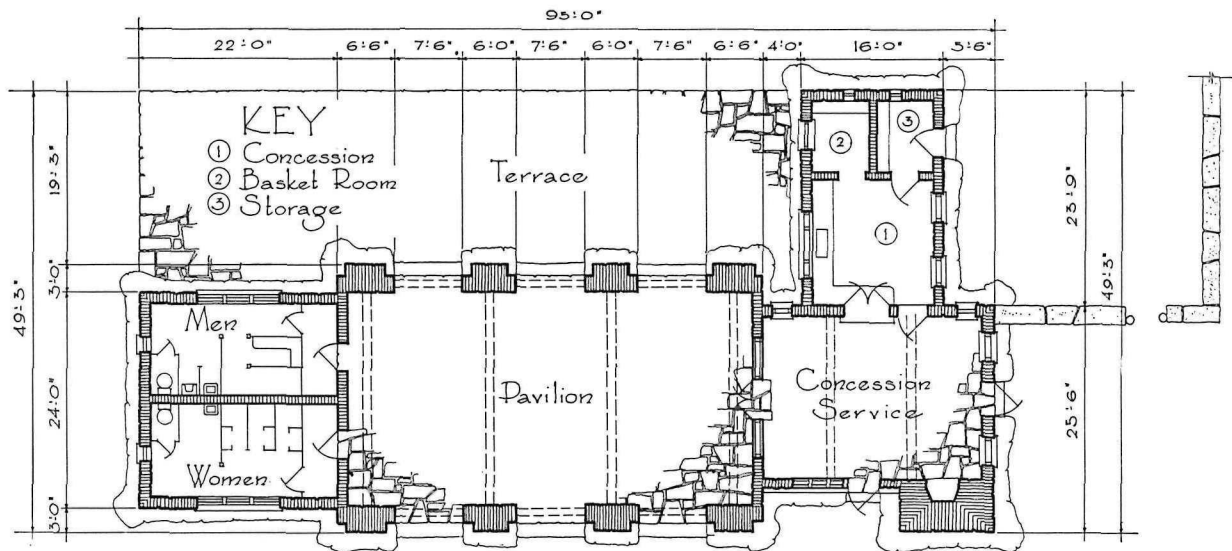


Top jewel in the crown of Texas' park structures is the large refectory. In no other part of the country has this multi-purpose facility been so elaborately, variously, and cleverly developed. Usual pattern is shelter space, refreshment concession, and

toilet facilities, to which, in this instance, are added small stage and roof deck overlook reached by an exterior stairway. It is of interest to know that no suitable native stone was available here and that a manufactured block is the material employed.



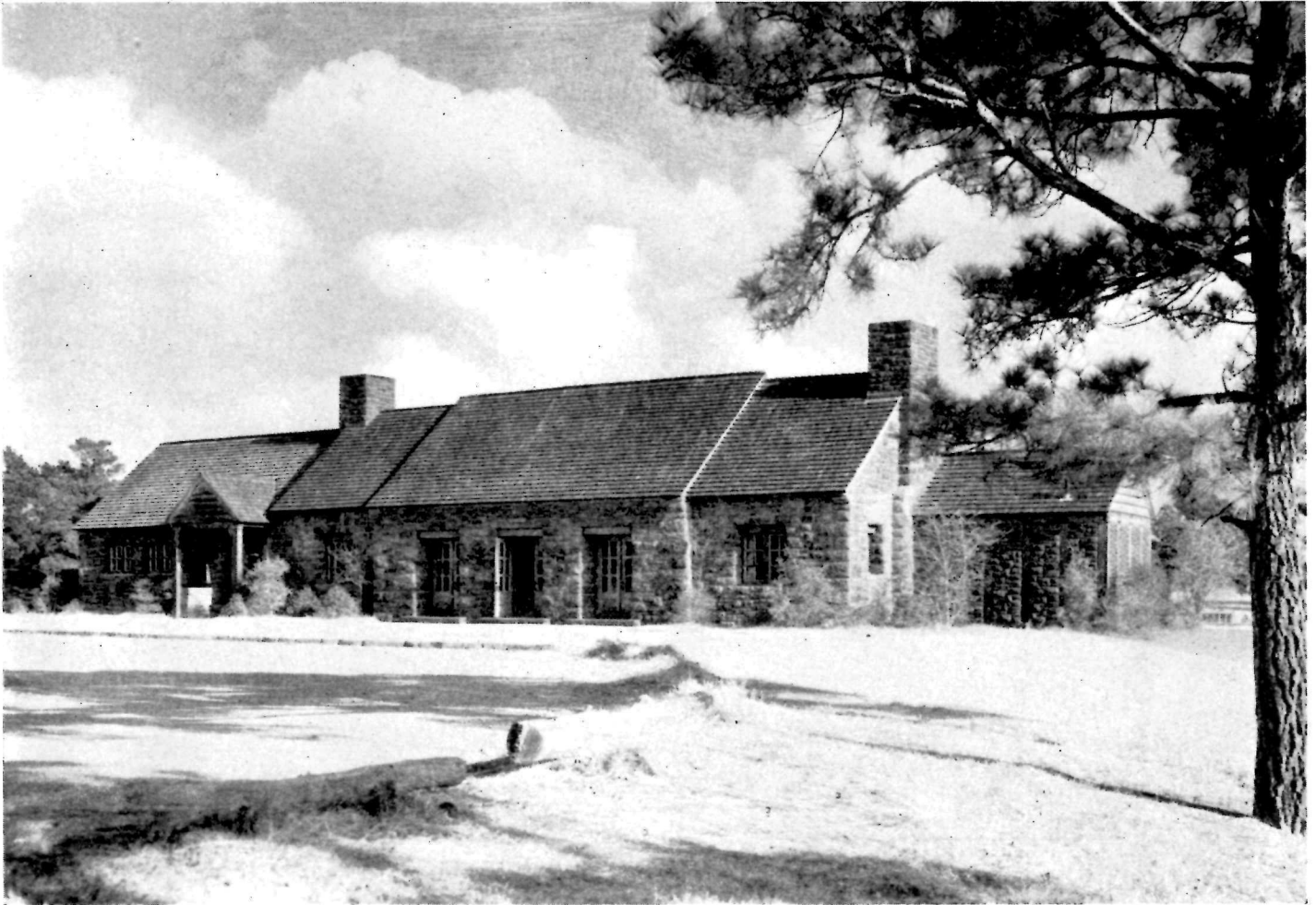
Refectory, Palmetto State Park, Texas



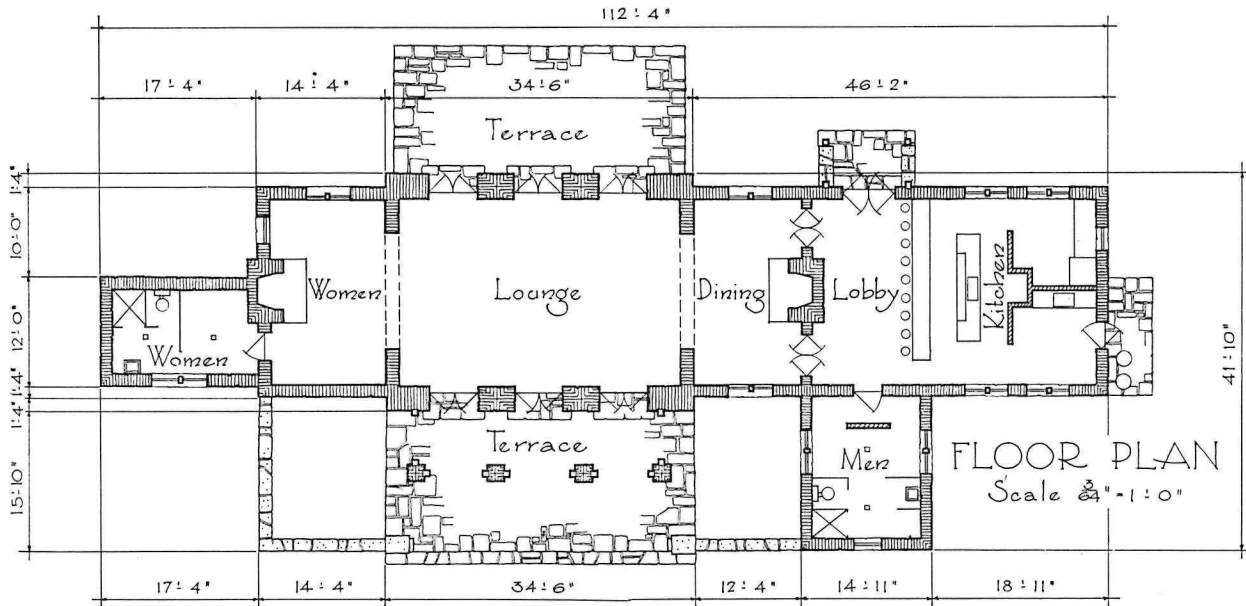
FLOOR PLAN
Scale 3/4" = 1'-0"

Although the eye is first attracted by the novel palmetto-thatched roof, it lingers on to observe intently and to admire the masonry with outcrop base, the adzed timbers, and the vigorous treatment gener-

ally. No uninspired rehash of a forerunning park building this, but probably commemorative of some circuitous route between the Congo and the Emerald Isle that must once have passed through Texas.



Refectory, Bastrop State Park, Texas

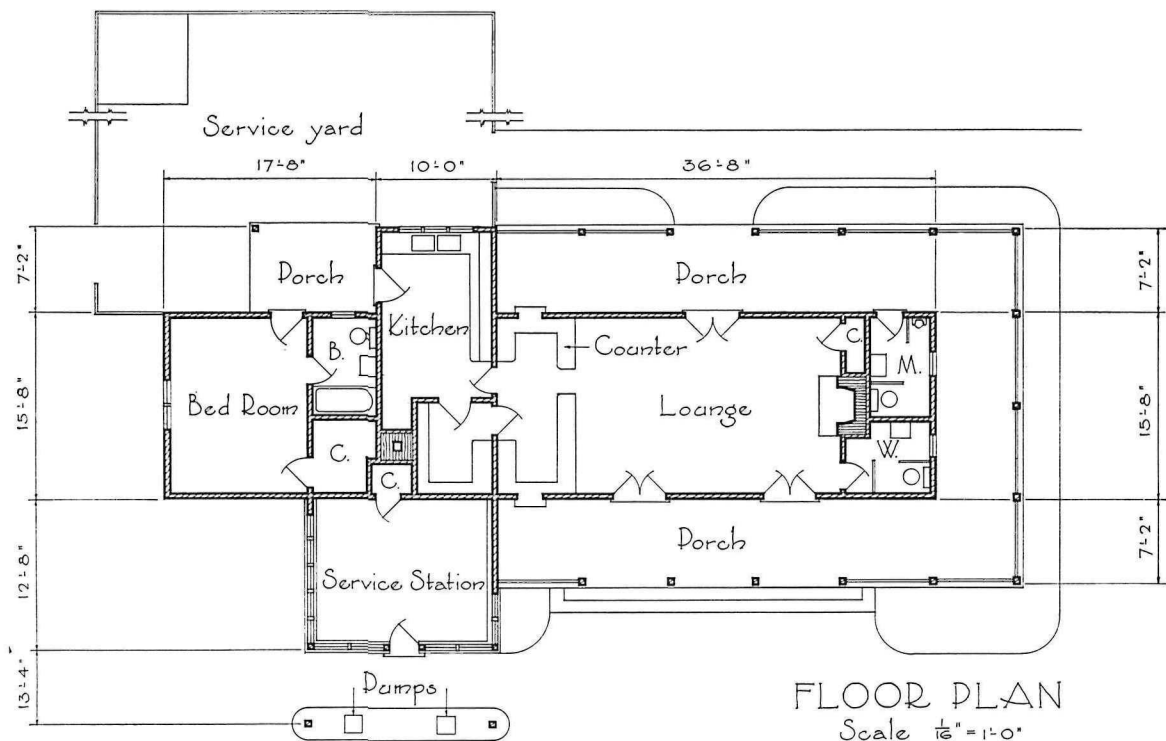


This building combining lunchroom, dining room, lounge space, and toilet facilities is on the sophisticated side in its architectural expression. It is restful in its excellent proportions, long, low lines, and

uncomplicated roof surfaces. The arrangement of dining space and women's lounge as alcoves of the main lounge makes possible virtually one large room when occasion demands.



Concession, Chinquapin, Yosemite National Park



In parks of vast size and along extended parkways, concessions to dispense gasoline are necessary. This one dispenses fuel for both man and motor and

provides quarters for an attendant in a housing that admirably recaptures the simple character of early California architecture.