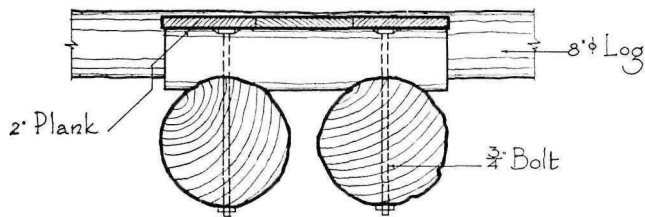




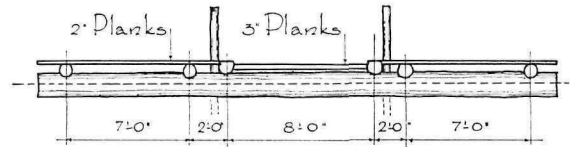
Mooring Float

Moran Lake State Park - - - Washington

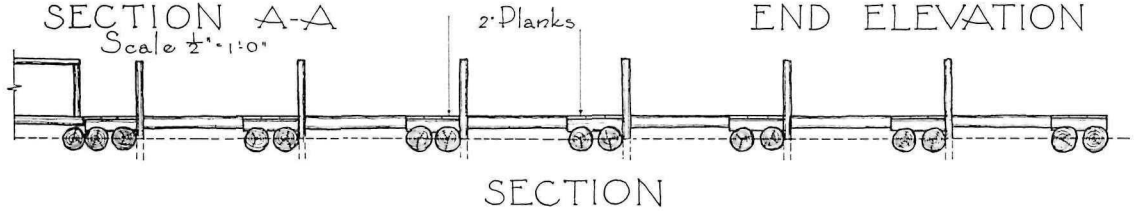
Here is a solution of the problem of docking small craft where the water level and shore line are variable. The booyage for the slips is large logs. The runway from the shore, supported on fixed piers, is in sectional units, of which the one adjoining the float inclines with the changes in water level. Thoroughly practical, this example might well have had the aesthetic benefit of something of the character of the swimming float at Lake Guernsey State Park, Wyoming, elsewhere shown herein.



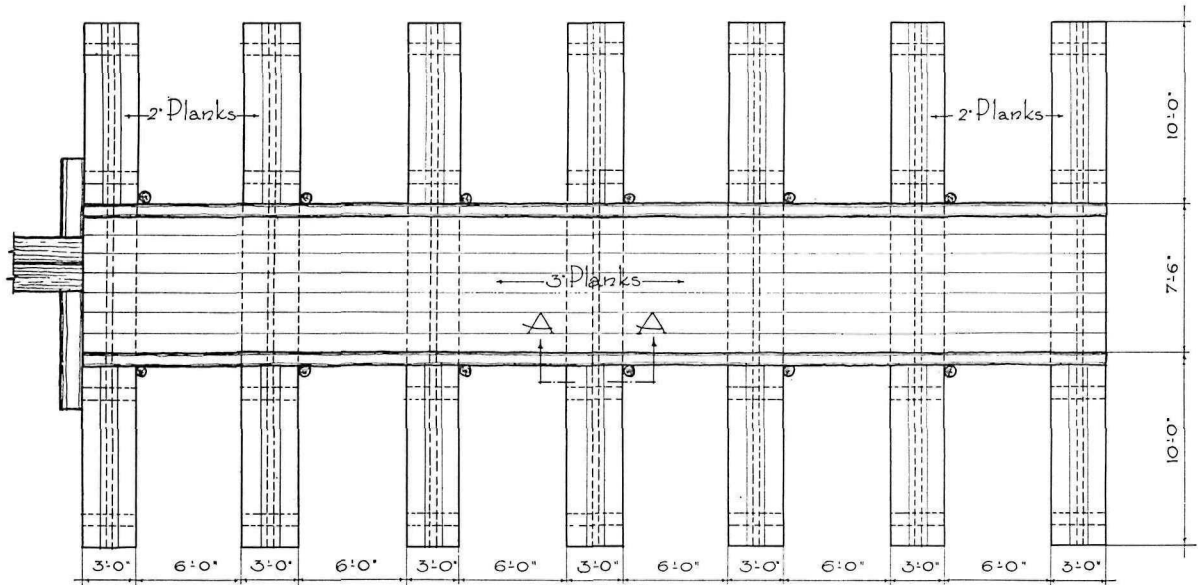
SECTION A-A
Scale 1/2" = 1'-0"



END ELEVATION



SECTION



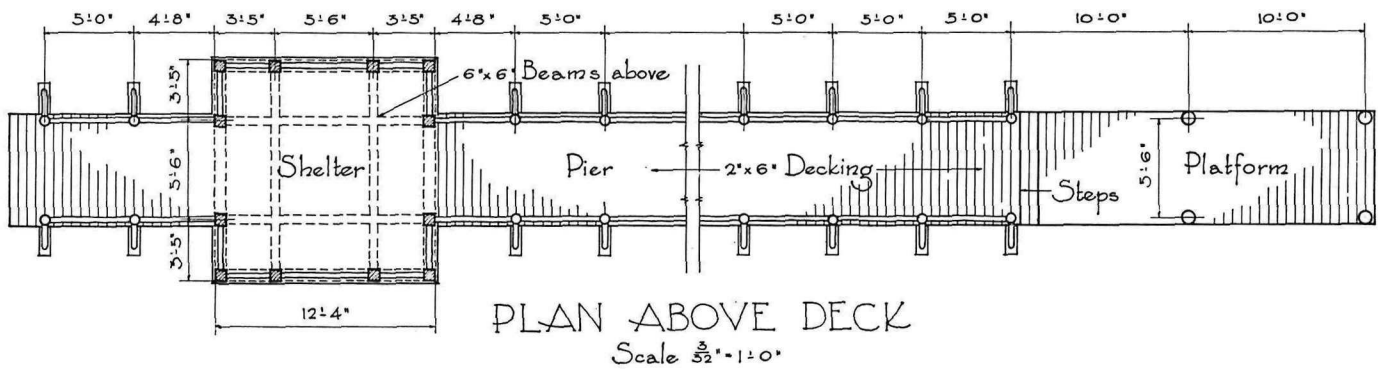
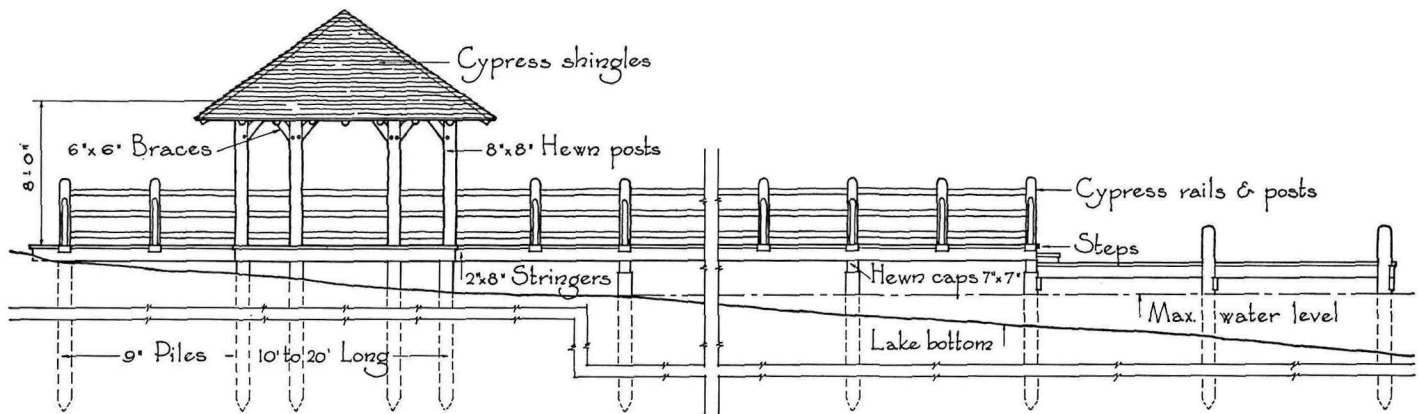
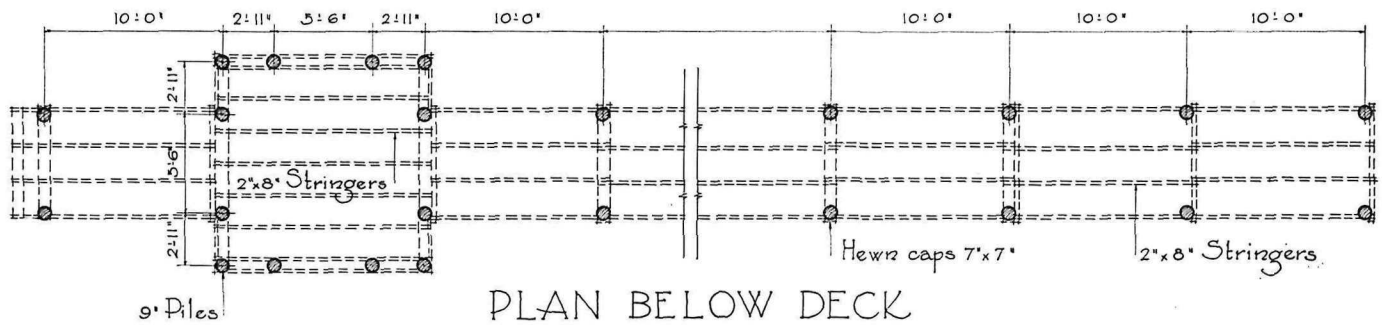
PLAN
Scale 3/32" = 1'-0"



SIDE ELEVATION
Scale 3/4" = 1'-0"

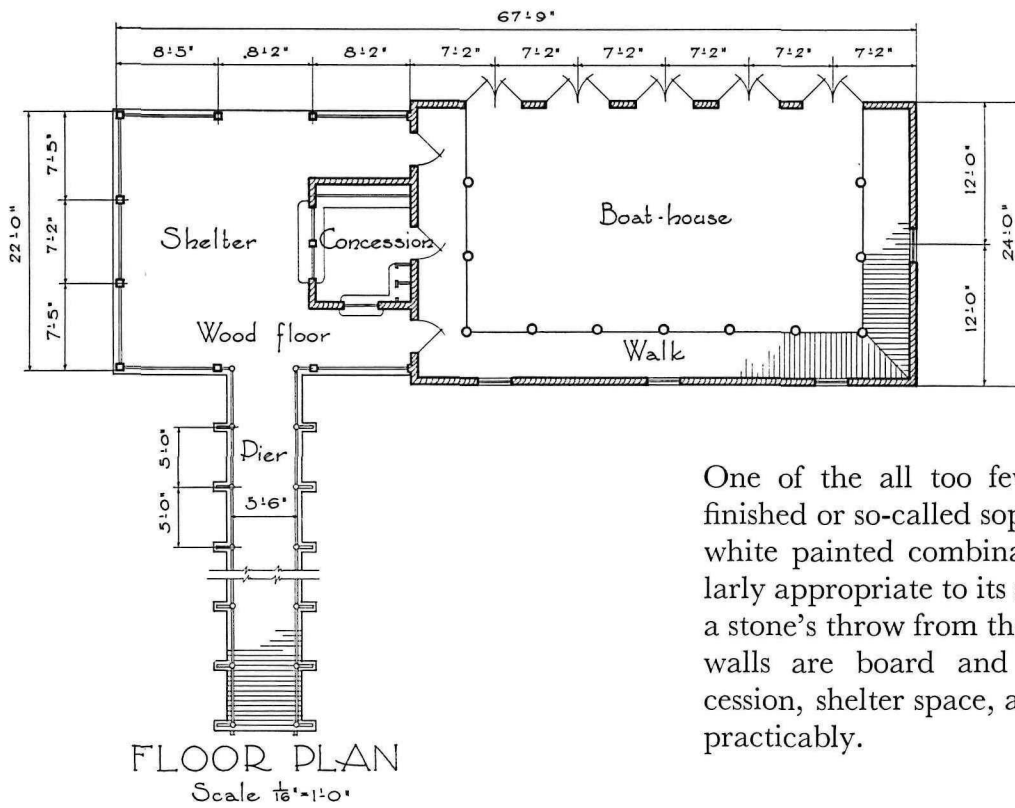
Pier - - Gulf State Park - - Alabama

In the deep South a boating and fishing pier with some provision for shelter from a bright sun seems a logical combination. In this example, the solution is simple and pleasing. The hewing of the timbers of the superstructure and the resulting softening of line and surface contribute much to the quality achieved.





Boathouse, Gulf State Park, Alabama

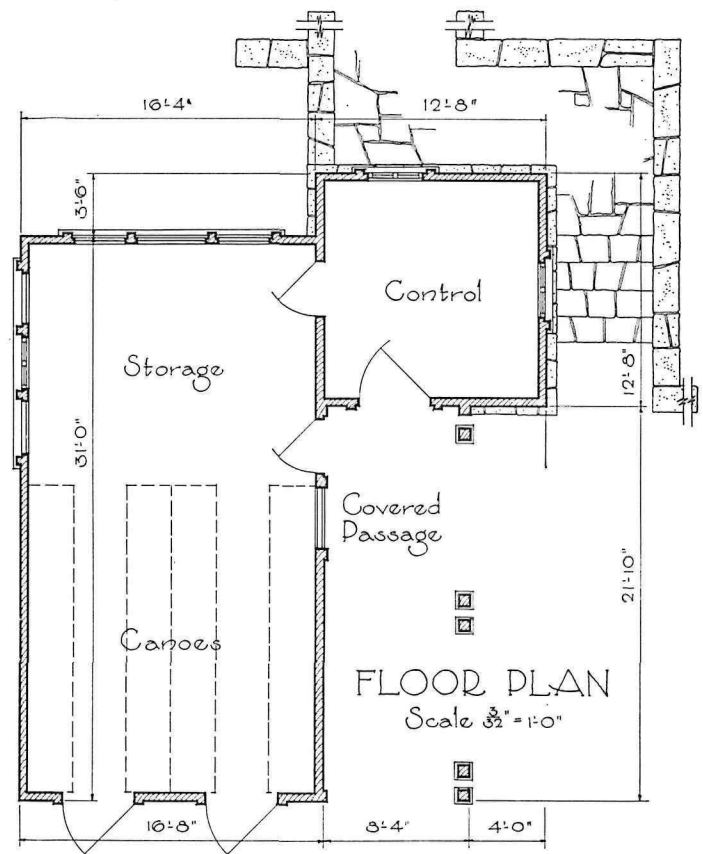


One of the all too few park structures of more finished or so-called sophisticated expression. This white painted combination building seems singularly appropriate to its setting on a fresh water lake a stone's throw from the Gulf coast. The enclosing walls are board and batten. Boathouse, concession, shelter space, and runway are interrelated practicably.



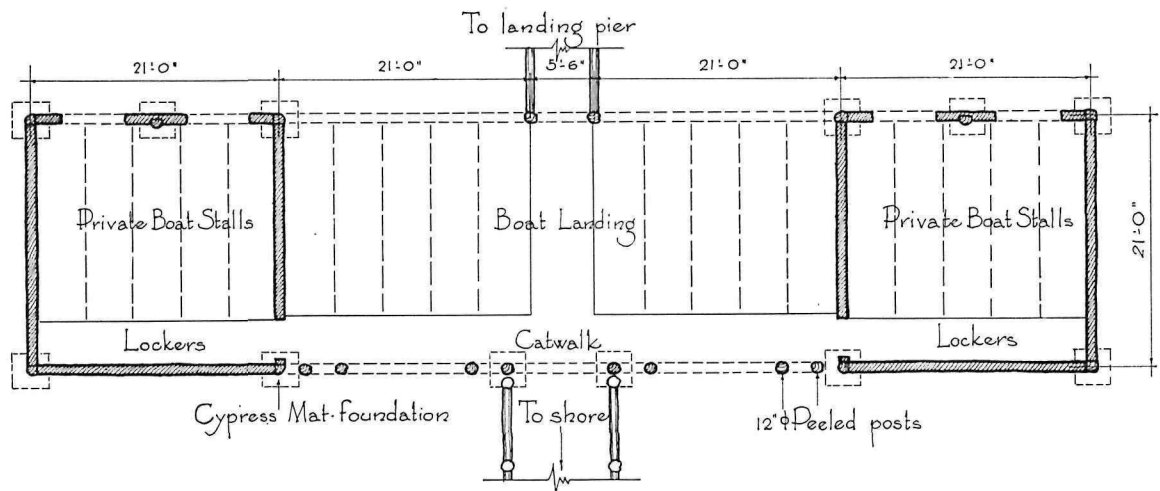
Boathouse, Bonham State Park, Texas

Outstanding and amiable accomplishment in the development of this little park, which cannot pretend to any scenic endowment, is a pervading unity of architectural character in its buildings. The low tower of this boat concession echoes the structure housing the storage tank and pump machinery, the masonry introduced relates it to the stone bathhouse and concession building which can be seen from the boathouse, and the square-hewn posts of the covered passage recall the supports of an open beach shelter pavilion close by. This maintenance of an architectural theme is a monument to the talents and clear vision of the designers.





Boathouse, Caddo Lake State Park, Texas



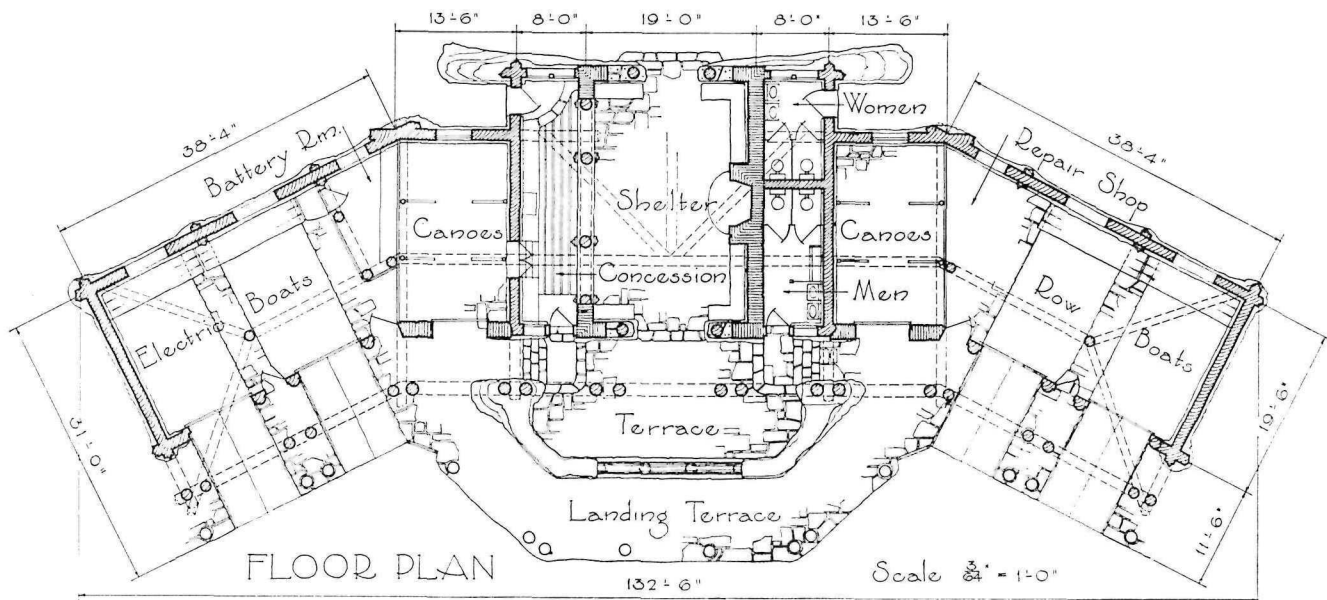
FLOOR PLAN
Scale 1/8" = 1'-0"

This boathouse of log construction meets the conditions of a lake subject to flood stages by the provision of a runway to the high water shore line. Opposite this a landing pier is extended to meet the condition of low water. Both enclosed storage

and merely roofed shelter for boats are furnished. The building harmonizes with its wooded location. Masking of the piling by a curtain wall of vertical poles or slabs extending well below the water level gives a substantial appearance to the substructure.

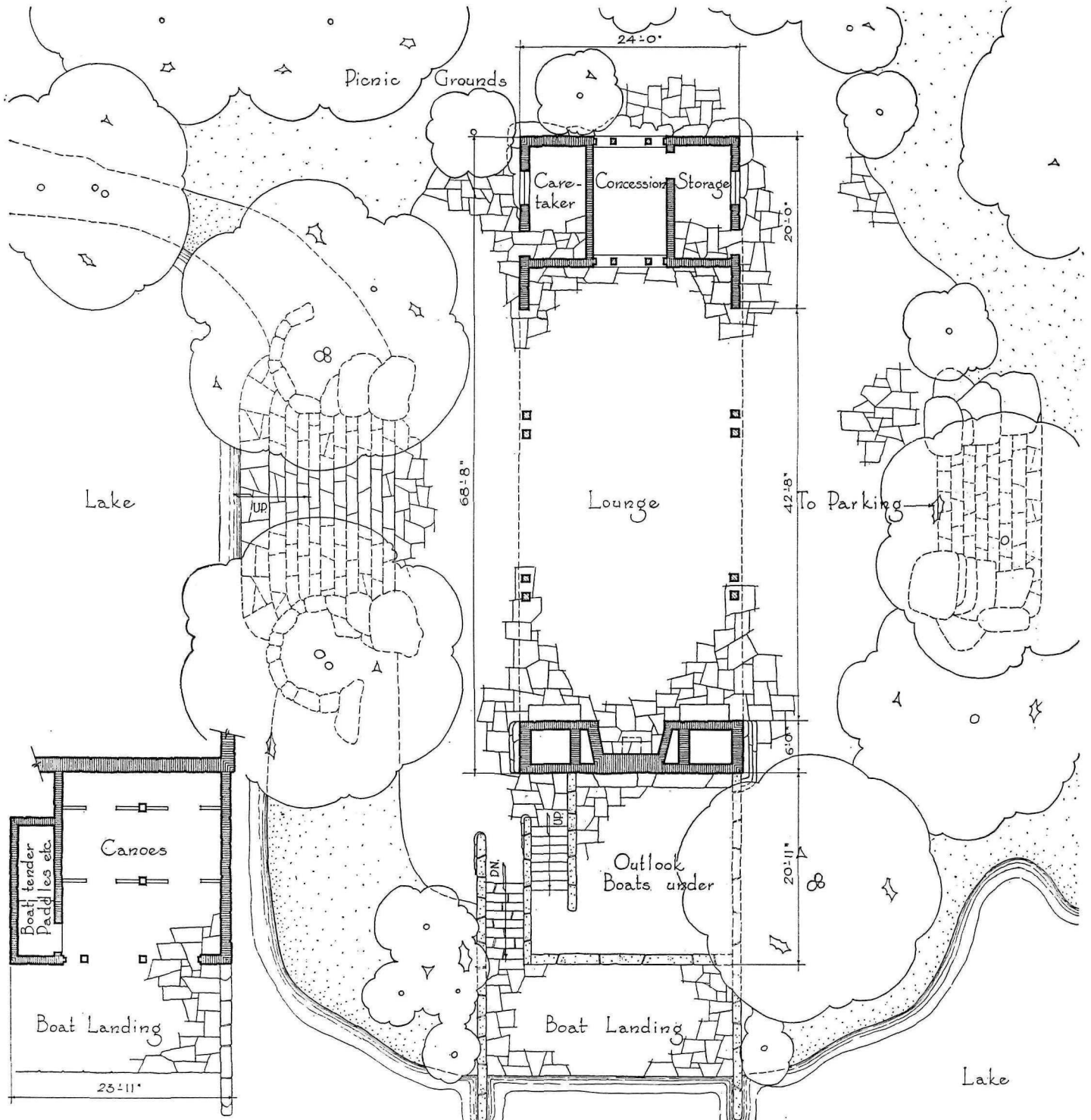


Boathouse, Mohawk Metropolitan Park, Tulsa, Oklahoma



Here a very free and rugged rock masonry and a vigorous log construction, novel in many structural details, are combined to produce a very ambitious and very interesting building. Its location is on

a lagoon in a large metropolitan park. It will be noted that shelter, food concession, toilet facilities, and overlook and landing terraces are provided in addition to storage for three kinds of watercraft.



BOAT HOUSE PLAN
Under Outlook

MAIN FLOOR PLAN
Scale 1/8" = 1'-0"

Perry Lake Boathouse and Refectory. - - - - Oklahoma

An interpretation of sturdy park architecture that turns its back on the tight little patterns of precedent to the attainment of considerable distinction. Its long low lines

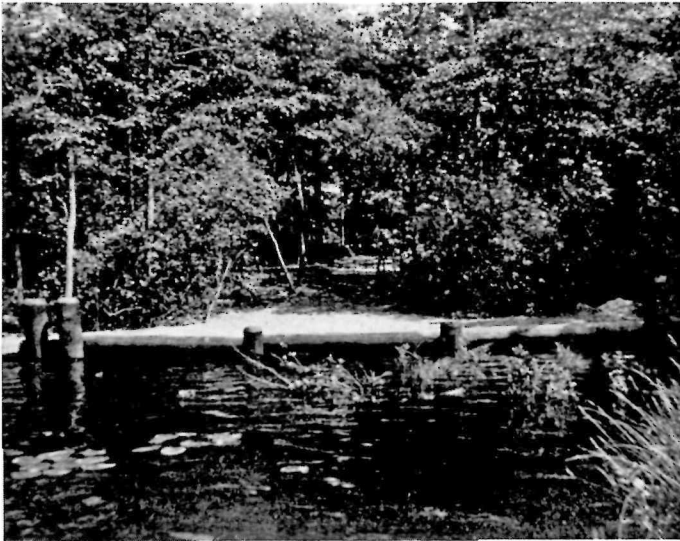
massive dominant chimney, the structurally forthright masonry and the broad stone steps that closely link the structure with the environs - all are factors that inspire admiration. The employment of several levels shows a nice attention to the requirements of site.



Perry Lake Metropolitan Park, Oklahoma



Perry Lake Metropolitan Park, Oklahoma



Parvin State Park, New Jersey



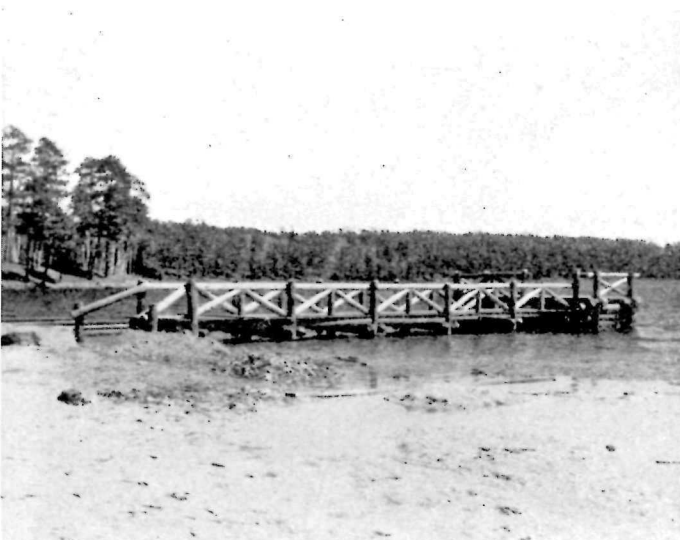
Mohawk Metropolitan Park, Tulsa, Oklahoma



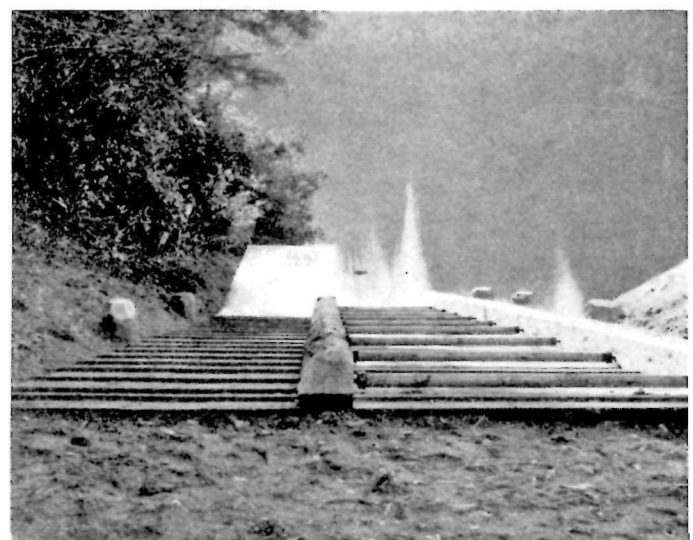
Lake Okmulgee State Park, Oklahoma

BOATING—MISCELLANEOUS ACCESSORIES

Here are illustrated several boat landings in character with natural park areas. The stepped levels of the example at Lake Okmulgee indicate a solution of the problem of a landing where the water level fluctuates widely. Below is a view of a facility for hauling boats ashore at Woahink Lake State Park, Oregon, where the bank is somewhat abrupt. One-half the width of the incline is equipped with rollers for skidding the boats, the other half is a ramp furnished with cleats to give a foothold to those hauling in the boats. The end of the dock at Itasca State Park is built of log cribbing, rock-filled to withstand ice pressures.



Itasca State Park, Minnesota



Woahink Lake State Park, Oregon