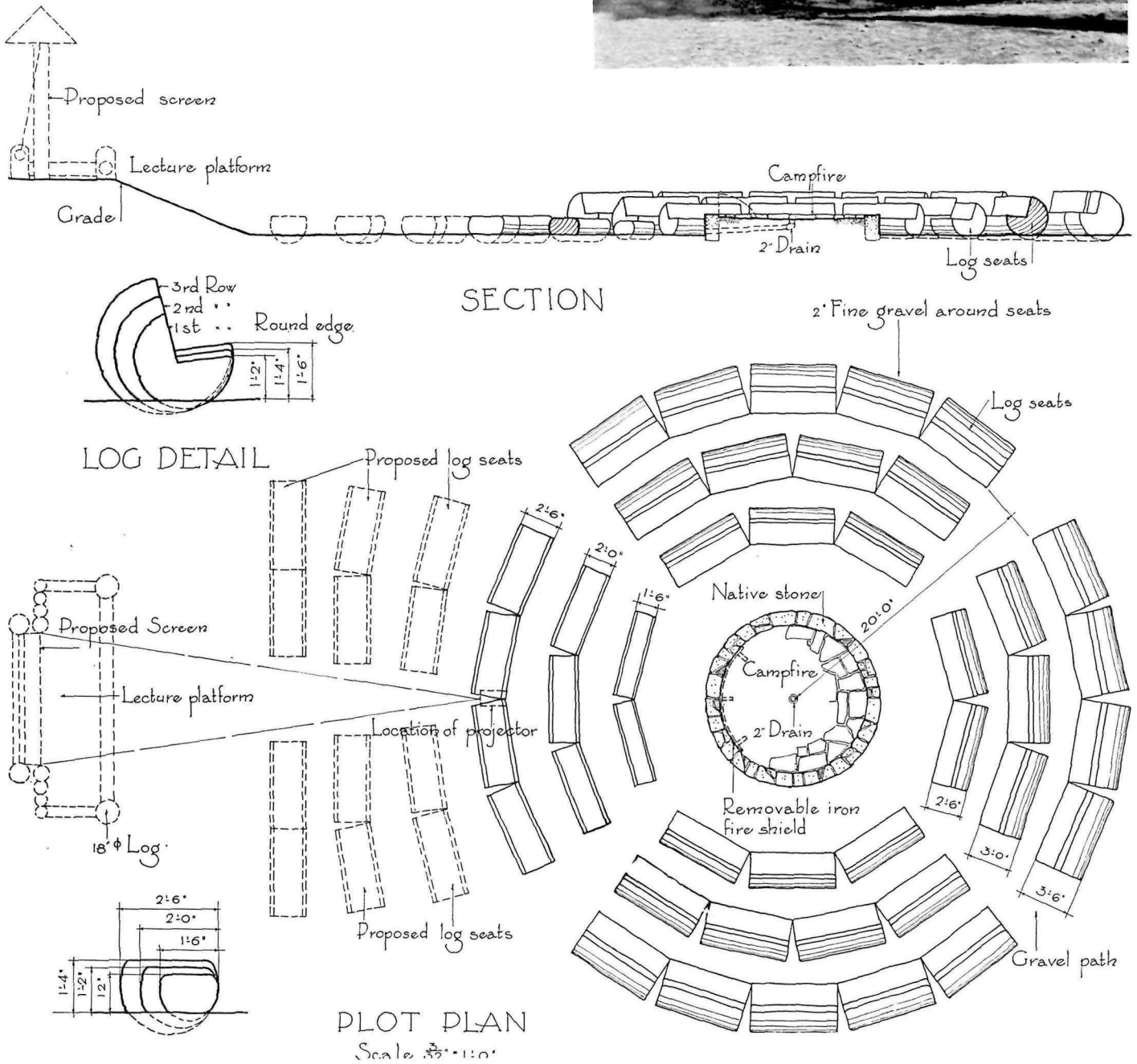
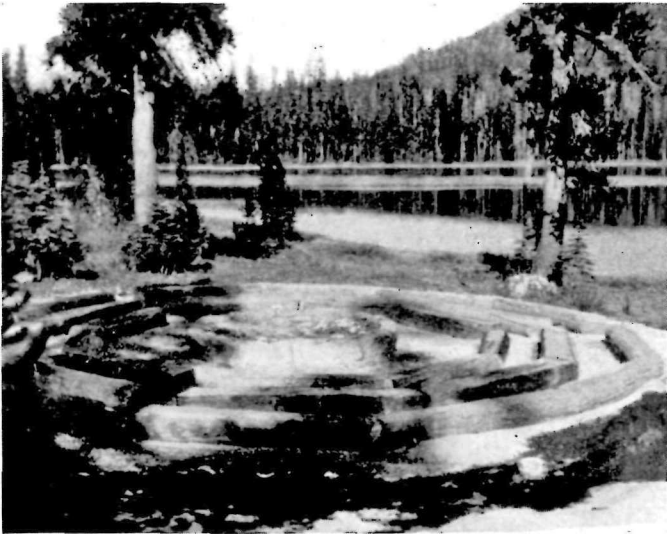


Campfire Circle

Manzanita Camp Ground - Lassen Volcanic National Park

A campfire circle with budding ambition to become a kind of outdoor theatre. The seating for three-quarters of its circumference is of full round logs, cut out to provide both seats and backs. The rest of the seating is without backs, anticipating the lecture platform, picture screen, and additional front row seats at some future time. Here is all the cleverness of the folding bed brought to park planning.

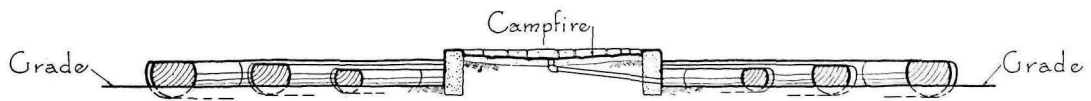




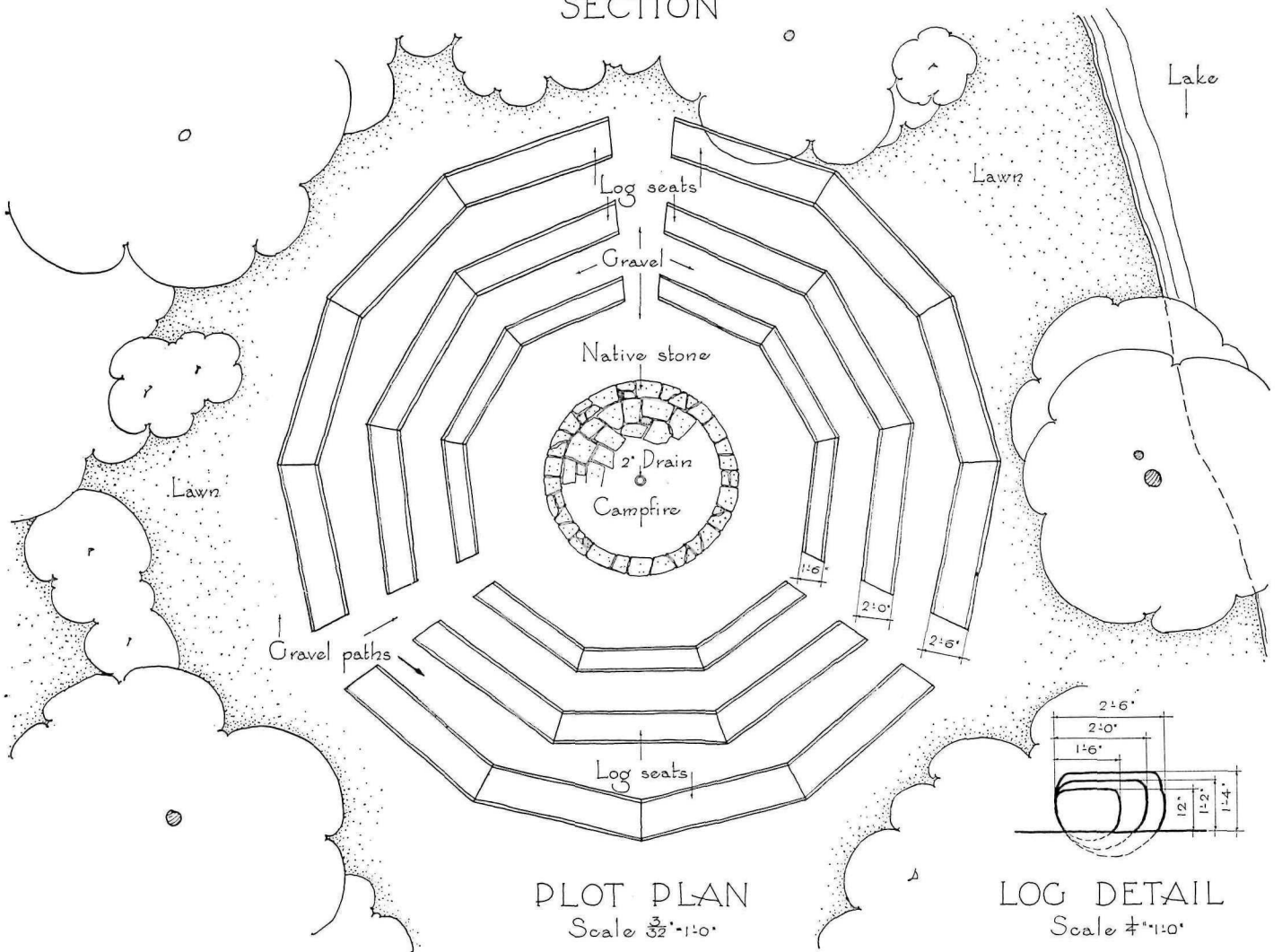
Campfire Circle

Summit Lake - - Lassen Volcanic National Park

Here is a simple and well-arranged campfire ring in an ideal wooded setting, offering nearby lake and distant mountain view. The fire is confined to the elevated hearth by a curb of stone masonry. The practical provision of drain for the hearth should be noted, also the increasing sizes of the log seats from front to back row by virtue of which campfire enthusiasts in assorted sizes are catered to.



SECTION



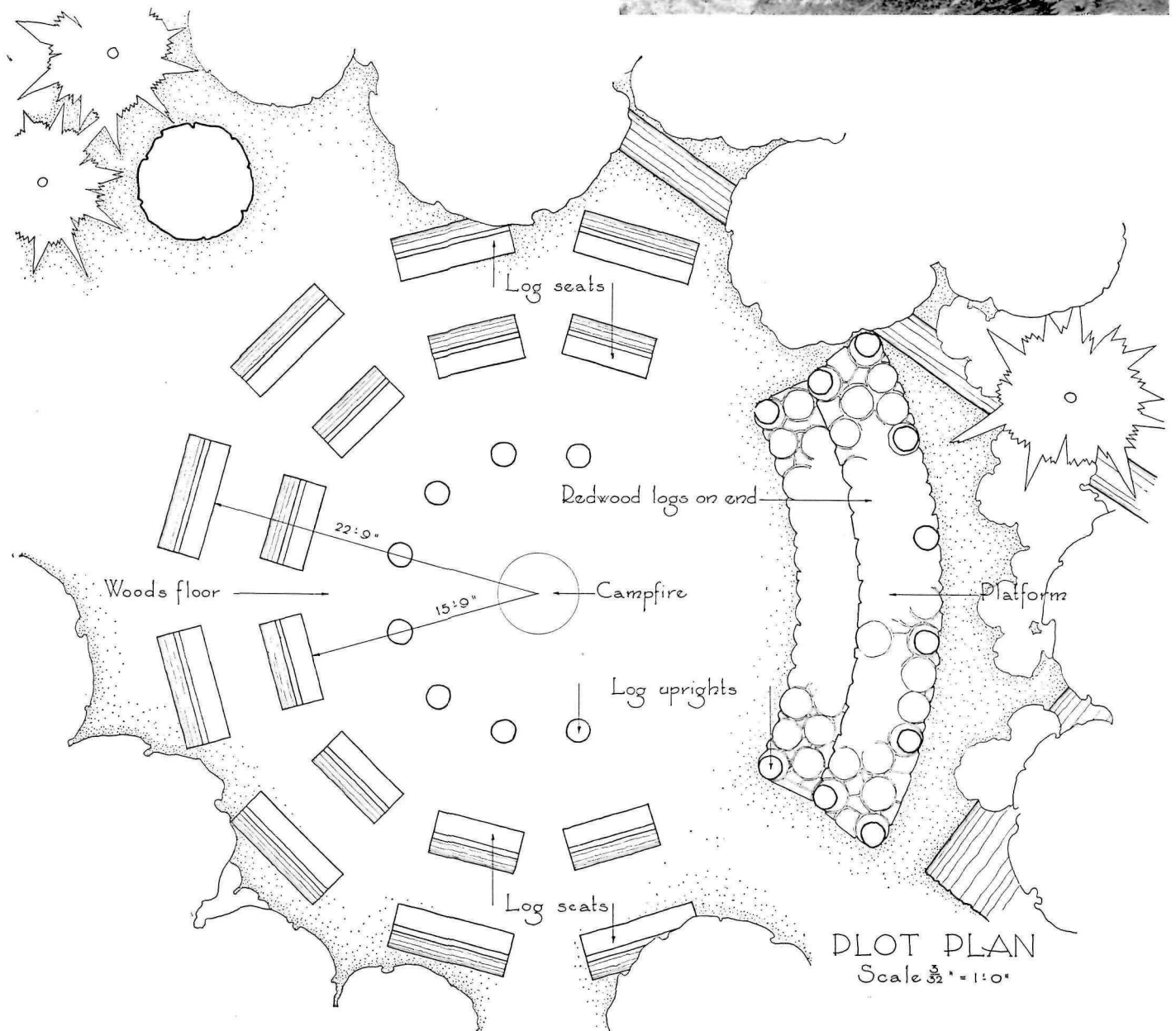
PLOT PLAN  
Scale  $\frac{3}{32}$ "=1'-0"

LOG DETAIL  
Scale  $\frac{1}{4}$ "=1'-0"

Campfire Circle

Stephens Grove State Park - - - California

A campfire grouping which, by reason of arrangement, scale and simplicity, avoids being utterly alien in its impressive sylvan setting. The stage is paved with end-grain blocks cut from redwood logs. The two varieties of seating - short lengths of log on end and horizontal logs shaped to provide seats with backs - bring desirably casual informality to the arrangement.

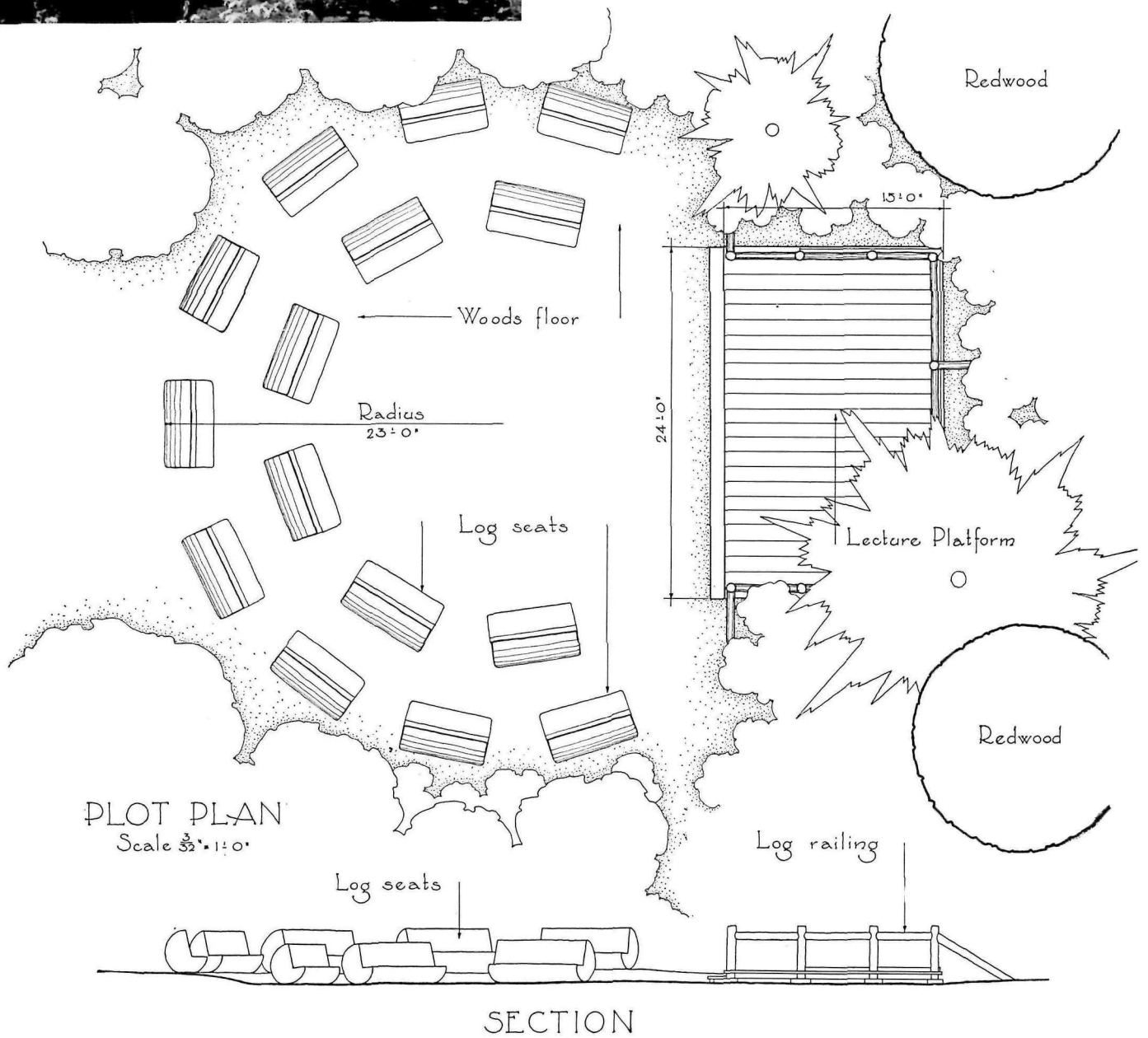


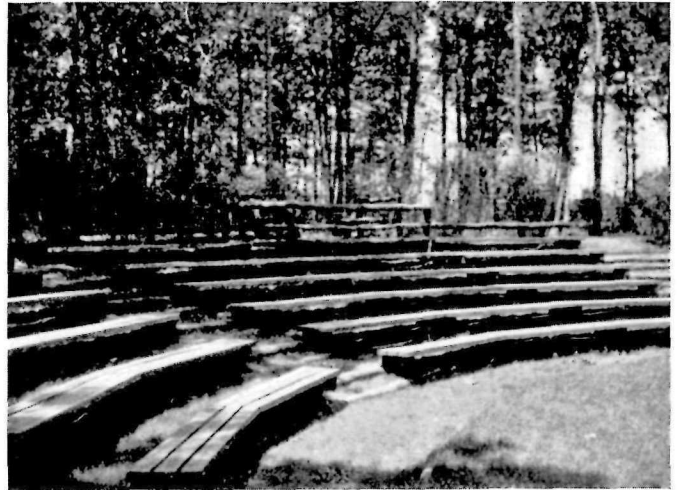


Campfire Circle

Drairie Creek State Park - - - California

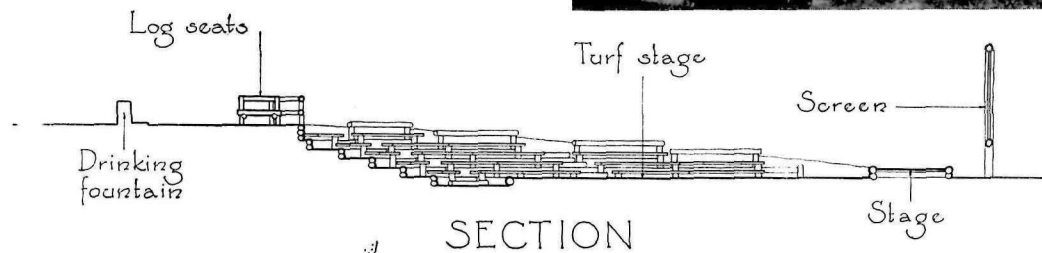
The park planner does well to recognize the paradox which confronts him in a setting so idyllic. It has at once advantaged and handicapped from the very start the facility he hopes to insinuate with a certain grace. Only a simple utilization of material native and in reasonable scale in a fittingly dignified arrangement, and a deep reverence for the surrounding living and fallen trees and lace-like ground cover can save the planner from uttering a sardonic jest.



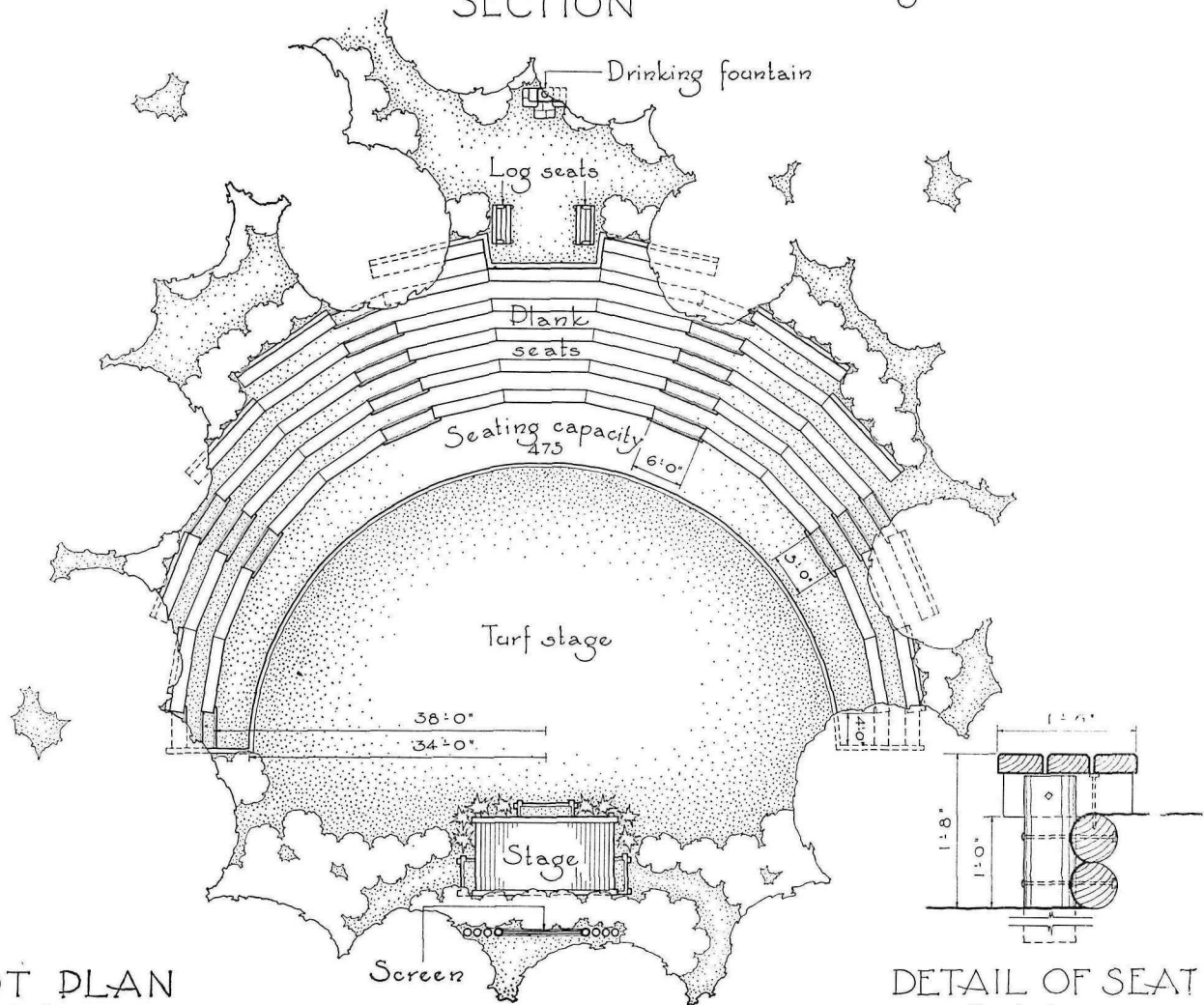


Outdoor Theater - Copiague - New York

While this agreeable example is on the grounds of a school, it has conservative and yet definite park character to win it a place here. Its semi-circular plan of seats, surrounding turf stage in front of platform stage, makes it more truly an amphitheater than an outdoor theater. The construction of the seats and the suggestion of foyer achieved by the drinking fountain and two facing log benches should be noted.



SECTION



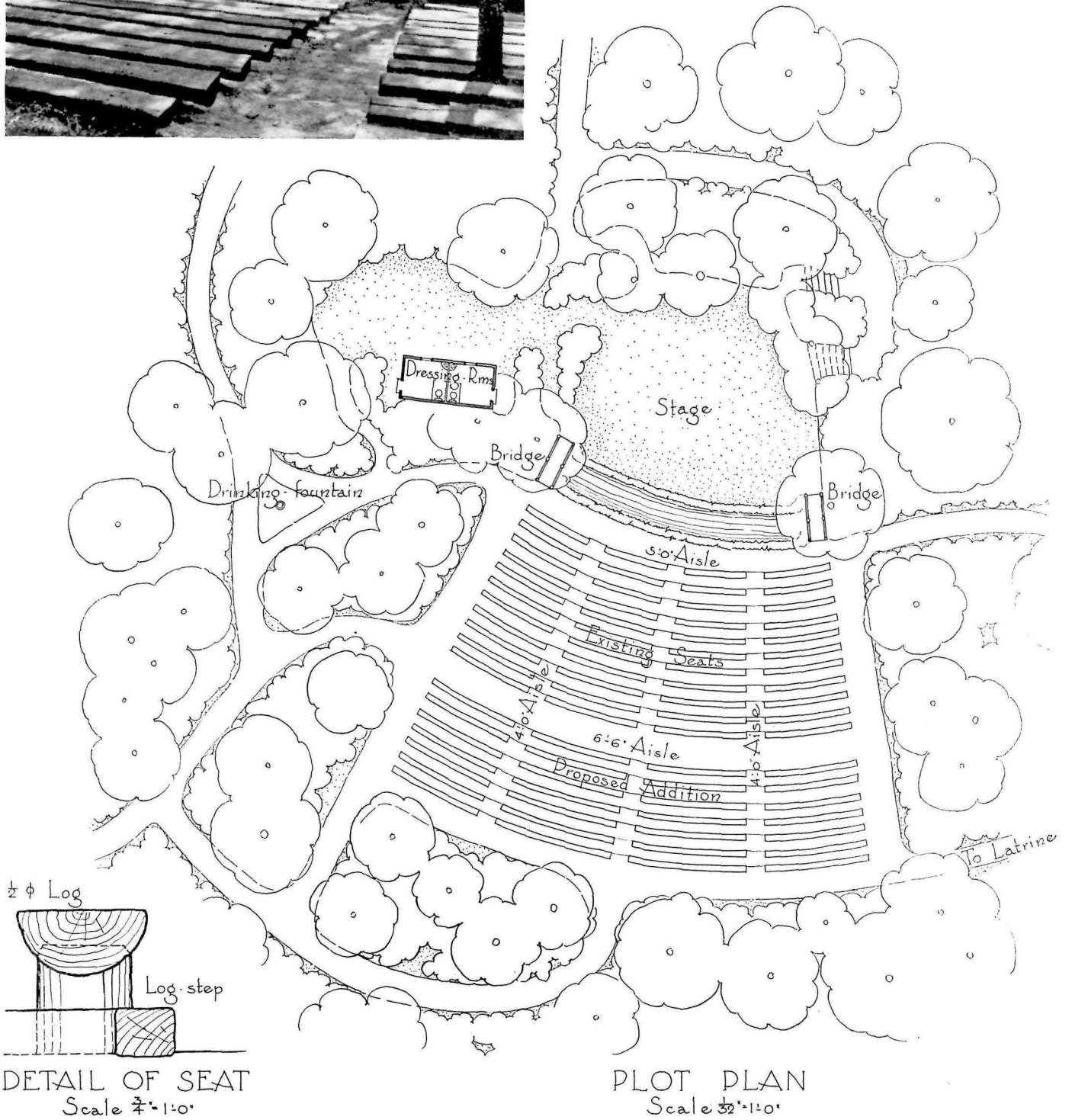
PLOT PLAN  
Scale  $\frac{3}{8}$ "=1'-0"

DETAIL OF SEAT  
Scale  $\frac{1}{2}$ "=1'-0"



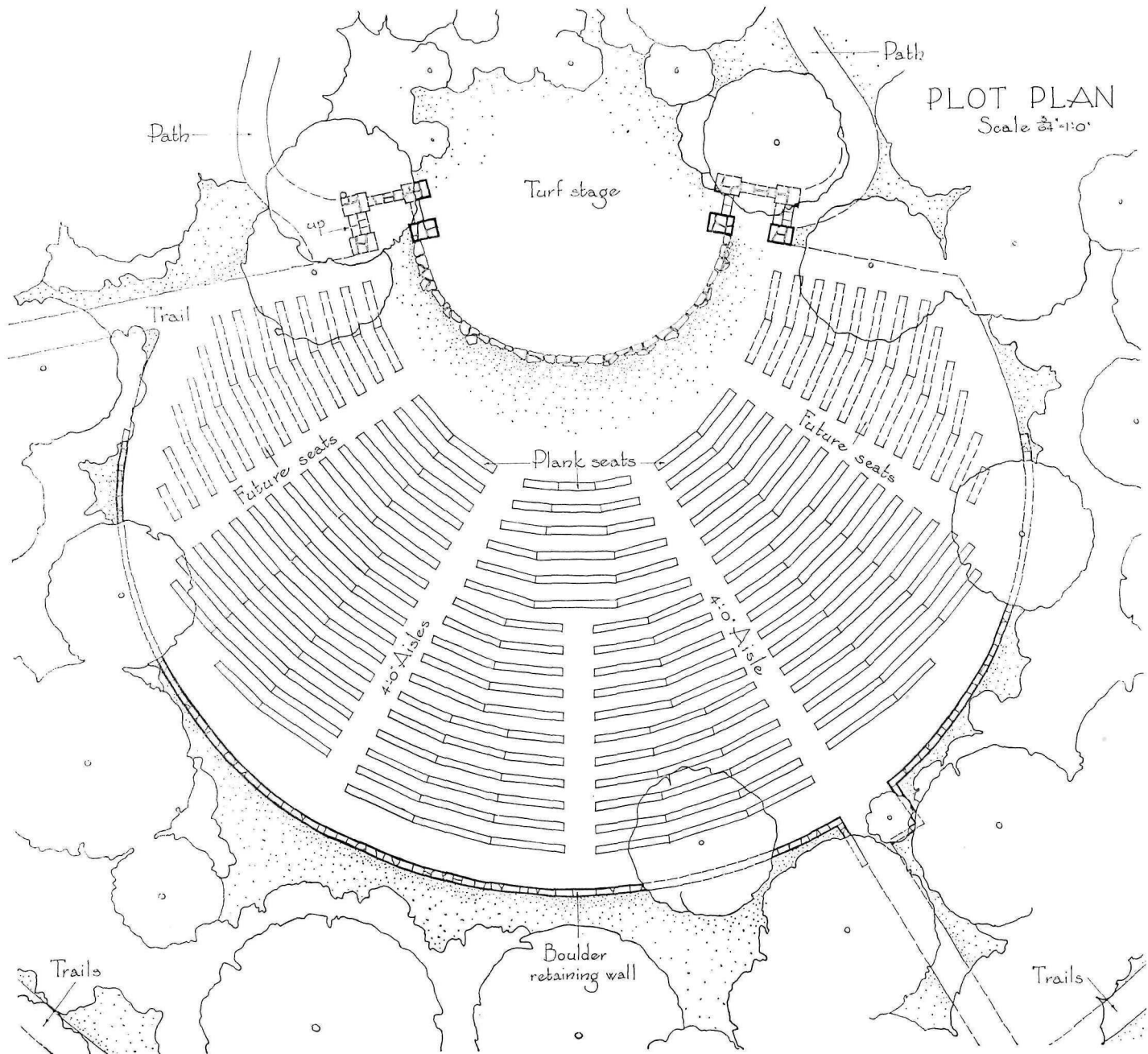
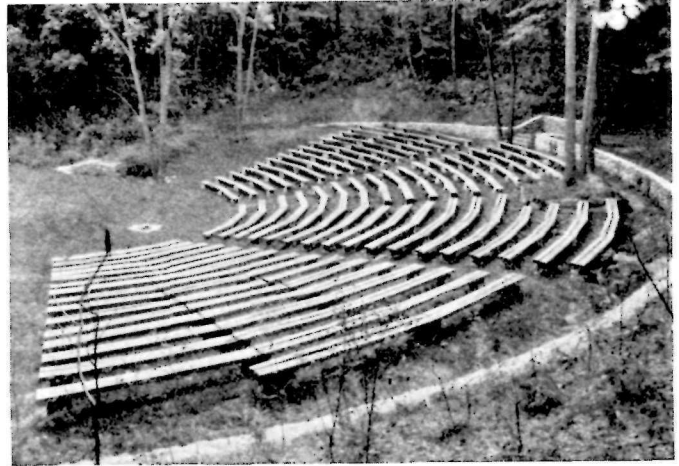
Outdoor Theater - - Matoaka State Park - - Virginia

Near historic Williamsburg and the campus of William and Mary College, this outdoor theater employs half logs with a natural sweep, carefully placed to favor the arcs of the seating plan. A resulting rhythmic harmony with the woodland setting could never have been achieved had perfectly straight timbers been used.



Amphitheatre - Forest City State Park - Iowa

The simpler the rendering of an outdoor theater the more fitting in a natural park. Here is an example that does not pretend to outdo its surroundings and as a result justifies its presence. The seats of heavy planks supported on masonry piers do not have the measure of informality attained by the log seating of some of the examples that follow. The state of incompleteness and the absence of summer foliage in the illustration obscure the considerable merit, present and potential, of this project.

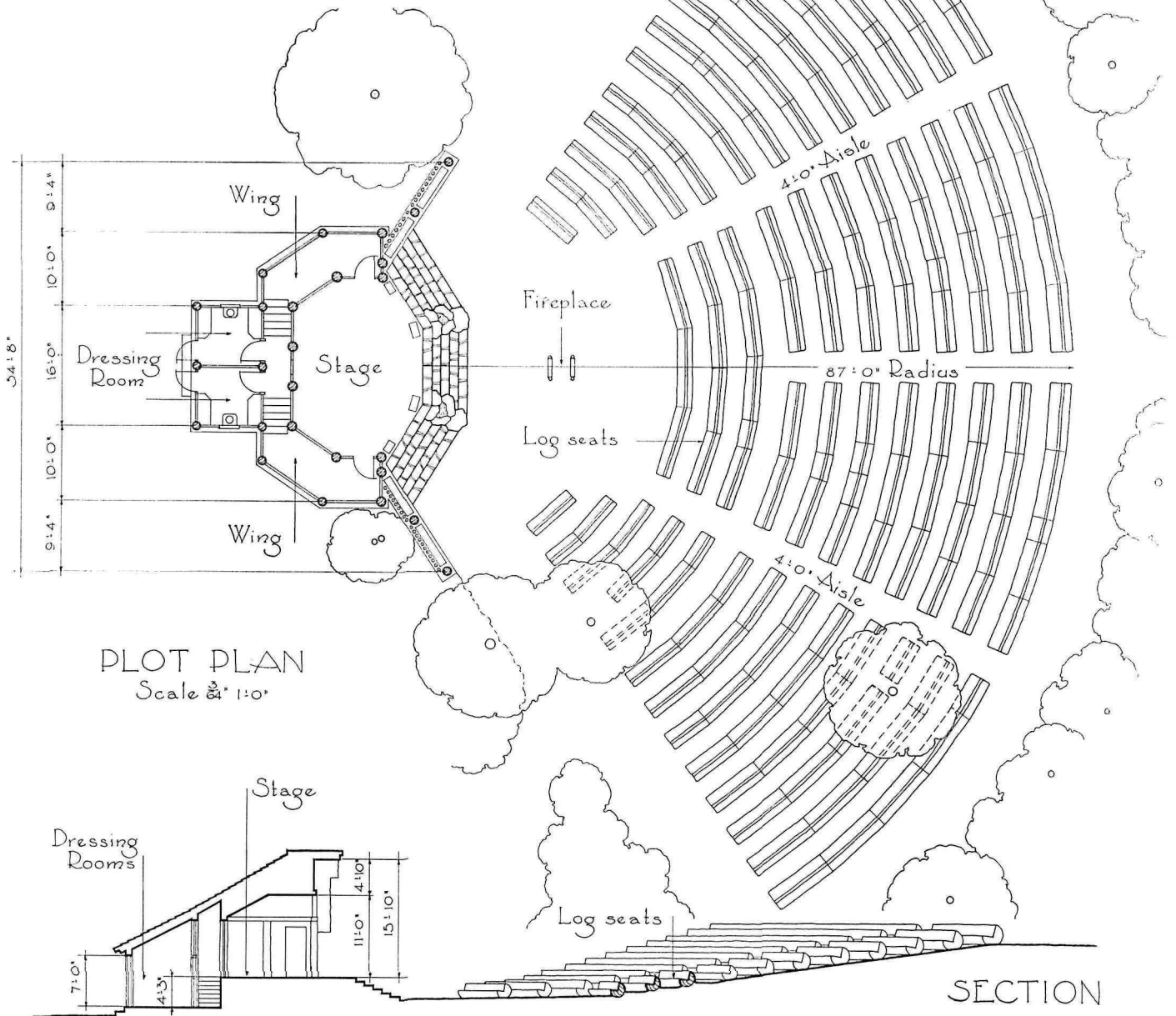




Outdoor Theater

Boulder Creek, Big Basin - - - California

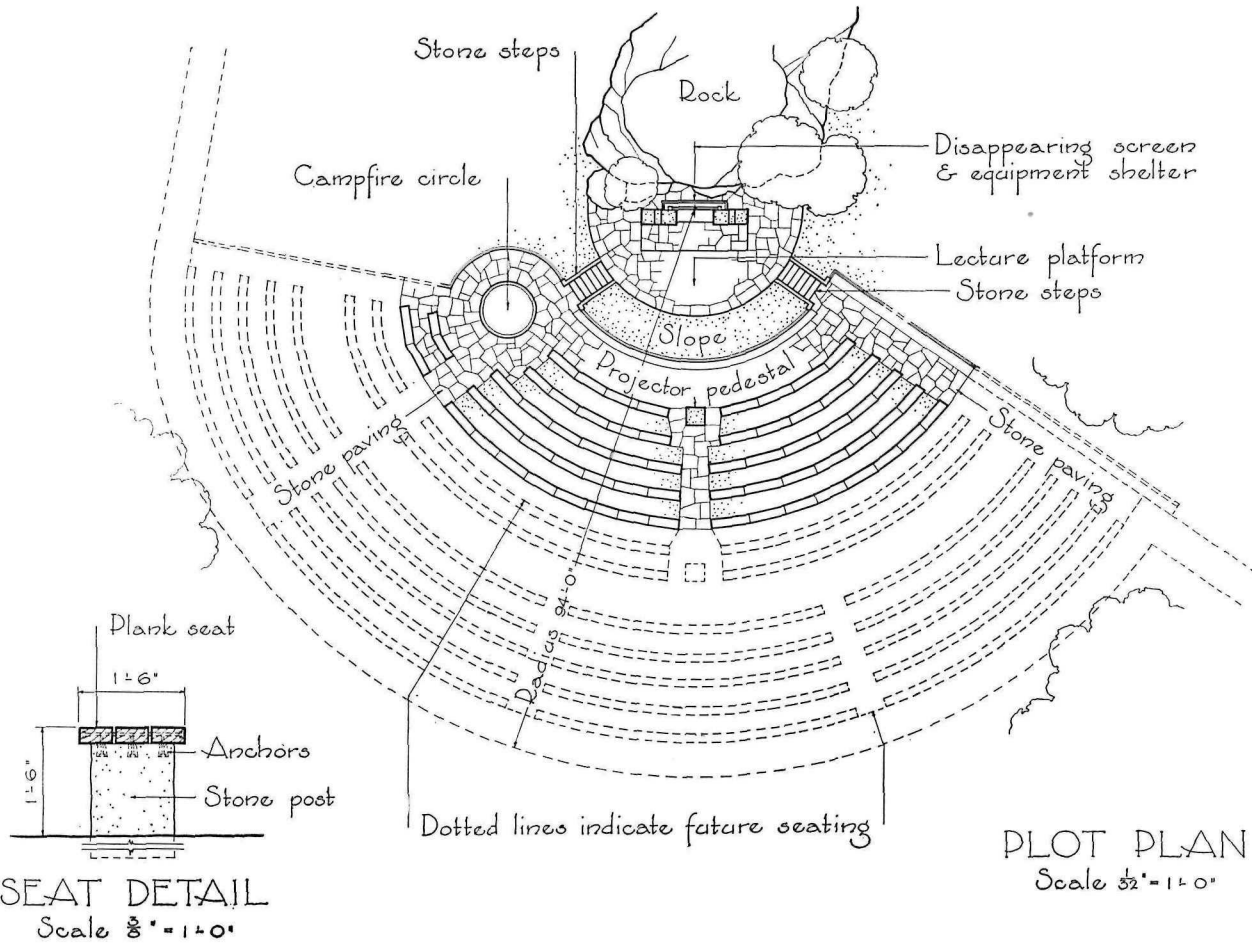
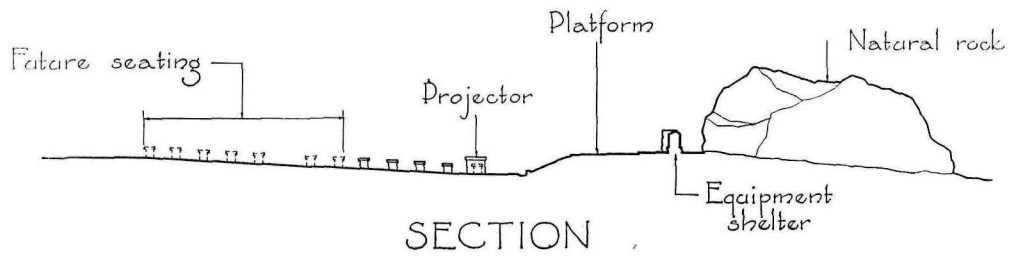
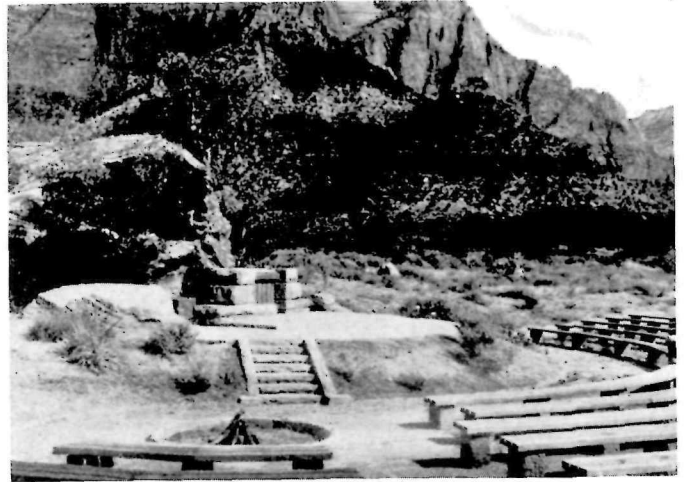
Here is rhythm in the wilderness. The accent of a man-made pattern of sweeping curves within a frame of impressive woods growth can be attractive indeed. This example is illustrative of the point. The slant of the backs of the hewn-out benches, the generous spacing of the rows and pronounced gradient of the amphitheatre suggest that comfort and unobstructed view have been given consideration.





Outdoor Theater - - Zion National Park

Most notable feature of this layout, if the magnificent scenic panorama may be excepted, is the disappearing screen and the shelter for screen and equipment. Attention is invited to the projector pedestal, the detail of the seat construction, the asymmetrical location of the campfire and the rock serving as the immediate background of the lecture platform. Future expansion of the seating has been anticipated and well planned.

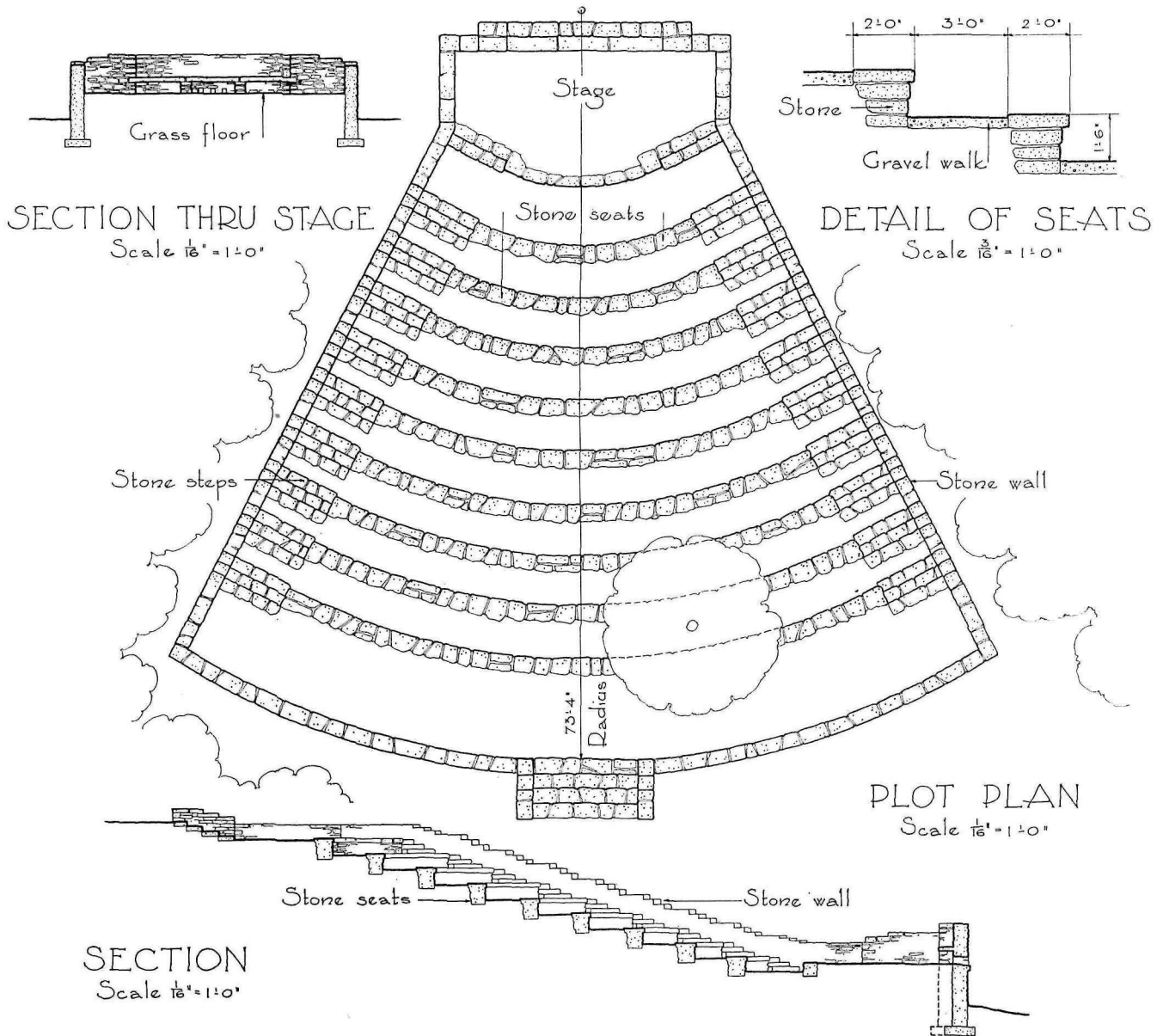




Outdoor Theater

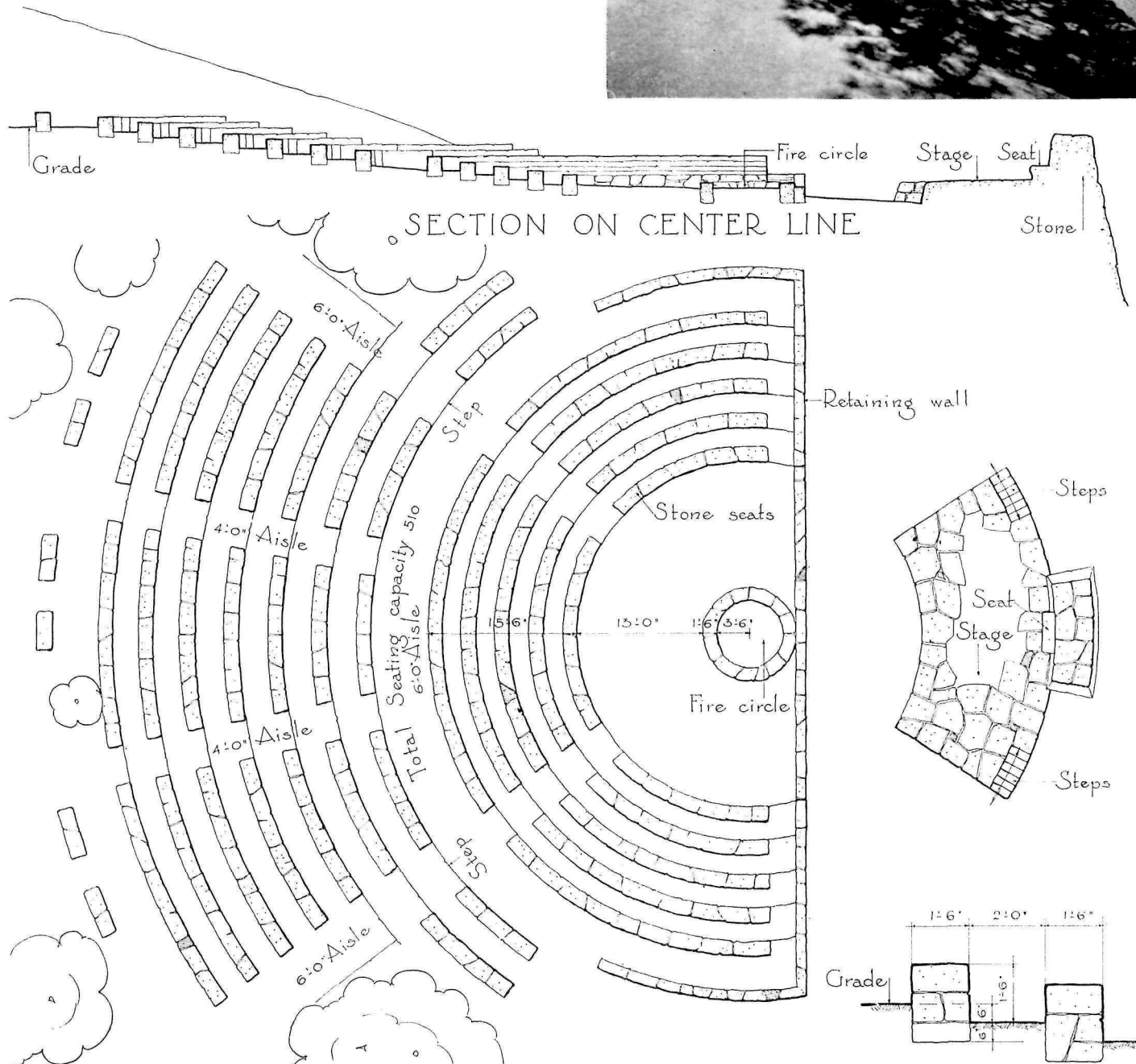
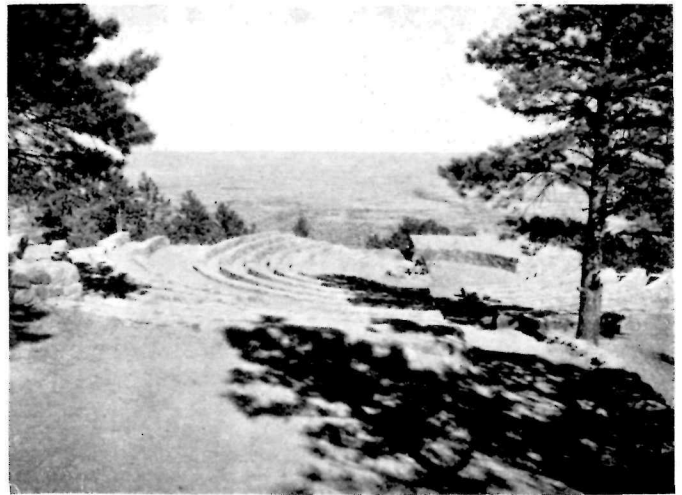
Brown County State Park - - - Indiana

Although uncompleted when the photograph was made this subject promises an altogether happy conclusion. It is desirably framed by trees, which results in an intimate character lacking without them. Its modest size likewise is a factor in this. Patrons will be grateful for the narrow arc plan and sharp slope insuring for all a "head-on" and full view of the stage without need for neck craning and straining for altitude.



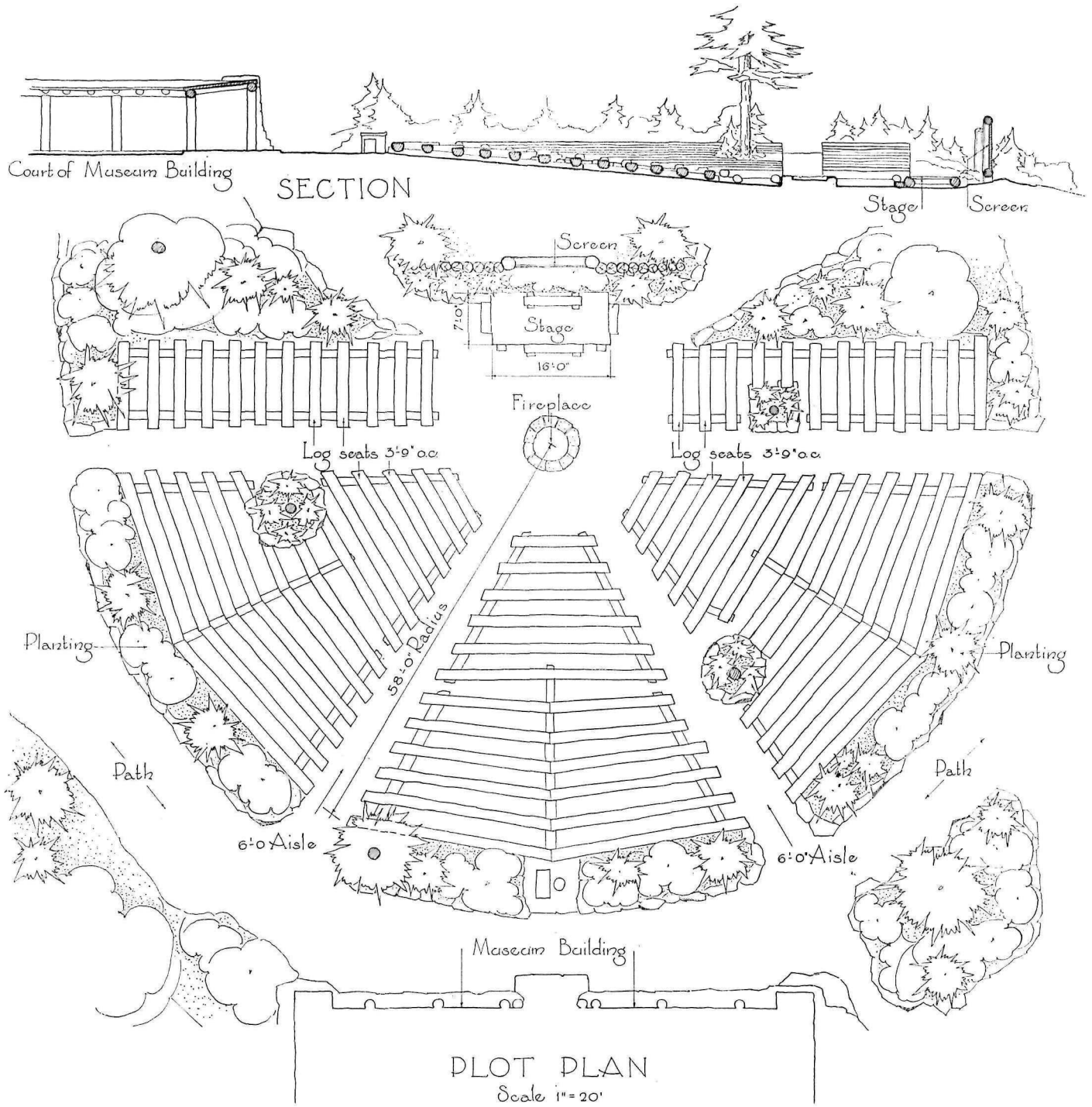
Amphitheater - Flagstaff Mountain State Park  
 Boulder - - - - - Colorado

The value of the distant view as backdrop for the stage of an amphitheater is here manifest. The campfire is brought into prominence as the very center of the arcs of stone seats. When time has provided walls of evergreens as a background for the seating, and as a frame for the panoramic backdrop, this example will have come into its own.



PLOT PLAN  
 Scale 1/8" = 1'-0"

DETAIL OF SEATS  
 Scale 1/4" = 1'-0"

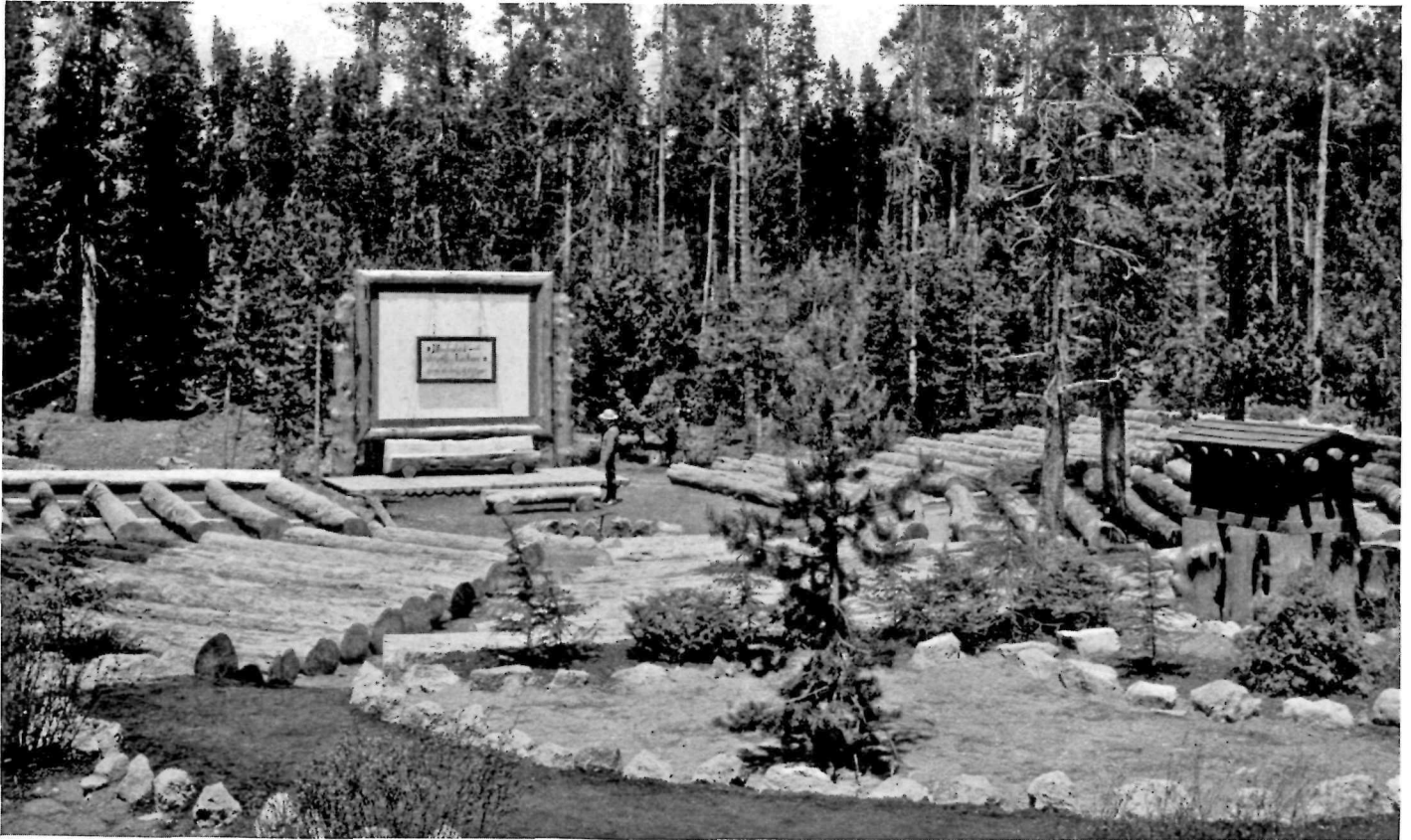


Amphitheater

Yellowstone National Park

In this large national park are two outdoor theaters of nearly identical arrangement. On the facing page both are pictured. The plan shown above is of the Old Faithful amphitheater, which differs from the one at Fishing Bridge, mainly in the greater elaboration of its platform and back-ground. Both platforms are quite shallow front to back.

The campfire pit is axial in both instances. The seating of large, barked logs, resting on log stringers, is boldly scaled to the out-of-doors. The perching of the housing for the projector on log "piles" is of interest. The rocks which outline the paths of one example are so unfortunately placed as to force their eventual removal, unless Nature hastens to supply some ground cover to obliterate them in considerable degree.



*Old Faithful Amphitheater, Yellowstone National Park*



*Fishing Bridge Amphitheater, Yellowstone National Park*



Outdoor Theater - General Grant National Park

Typical of an outdoor theater in a Far Western forest, and noteworthy for the seats provided - barked giant logs planted in the earth, leveled on the tops and dressed smooth. The campfire to one side of the vestigial orchestra pit is a usual appurtenance of the amphitheater in a National Park. The dissymmetrical seating plan, favoring trees and topography evidences deferential regard for the setting. The restless complexity of the stage background is doubtless necessary to meet the demands of the varied forms of entertainment offered.

