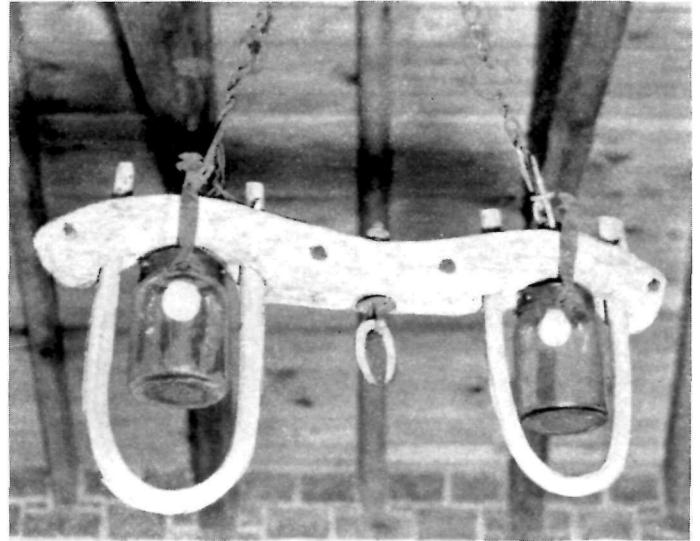


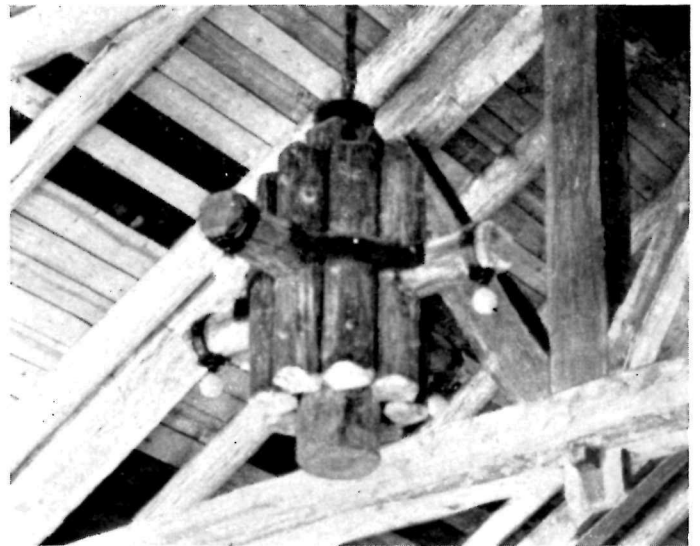
*Bastrop State Park, Texas*



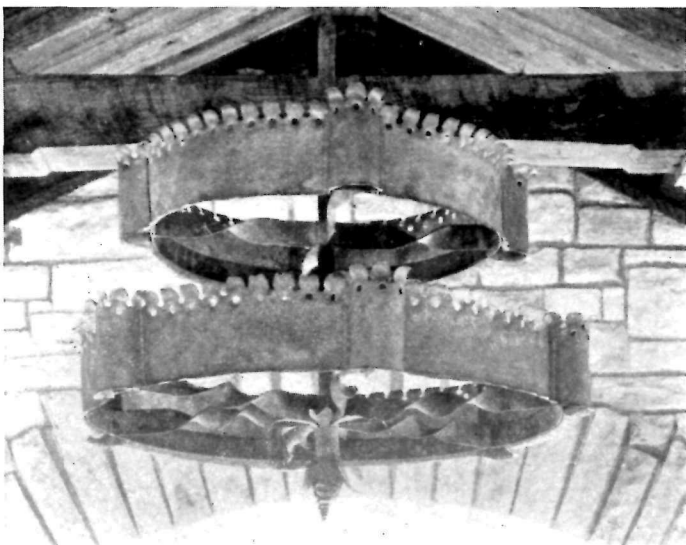
*Bastrop State Park, Texas*

CEILING FIXTURES

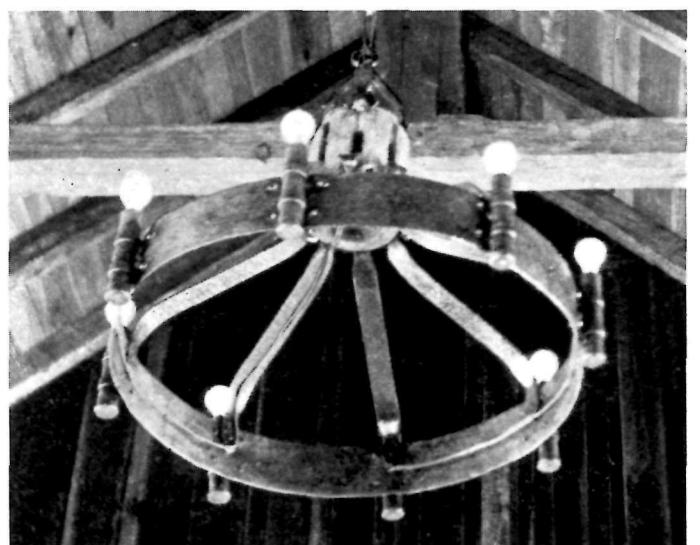
Shown above are the now familiar conversions of wagon wheel and ox yoke to lighting fixture use. In interiors with barnlike proportions having exposed wood trusses and roof framing, these reminders of an earlier day, salvaged to some purpose in the present, seem suitable. At the right is a massive fixture of peeled cedar logs clustered in a pleasing arrangement. It repeats the material of the furniture and relates well to the scale of the room and furniture alike. The fixtures illustrated below exemplify the contribution that the skill of the craftsman in iron can bring to park structures. Crisp wrought iron accents the softer contours of native materials.



*Petit Jean State Park, Texas*



*Bastrop State Park, Texas*



*Mother Neff State Park, Texas*



INTERIORS, LODGE, PETIT JEAN STATE PARK, ARKANSAS

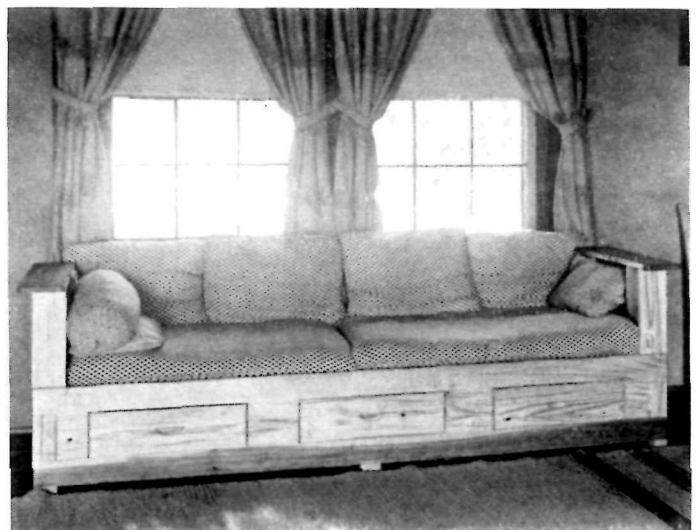
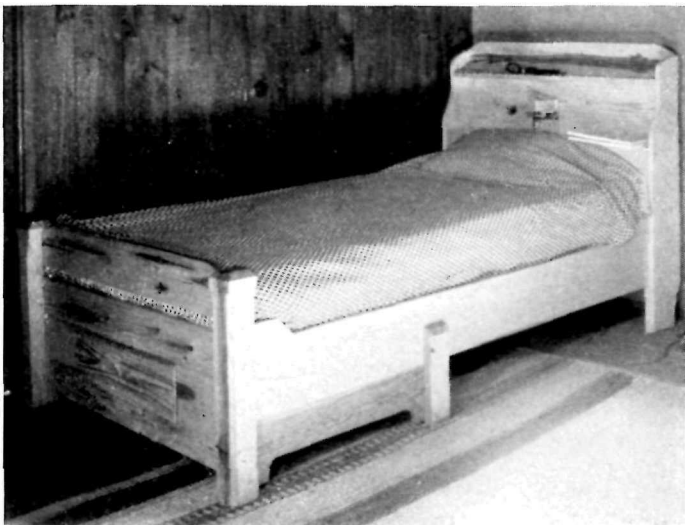
There is a unified theme in the interior furnishings of this lodge that is very satisfying. Except for the tops of the tables, the sturdy lounge furniture is fabricated entirely of peeled cedar logs. Even the lamp bases and ceiling fixtures are of this material,

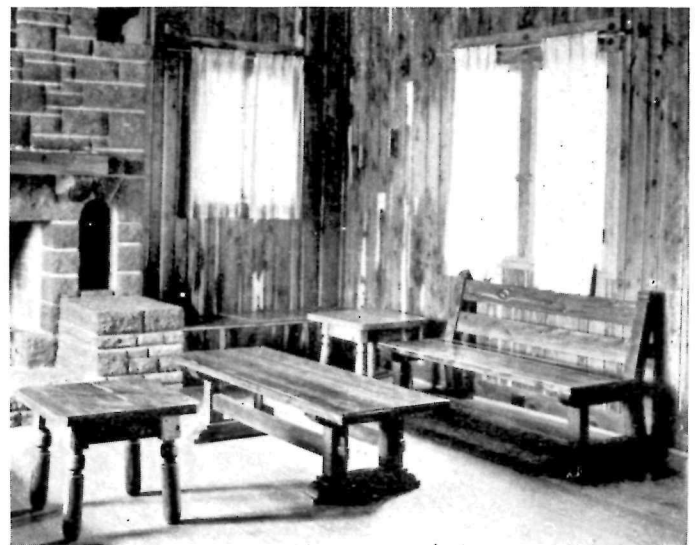
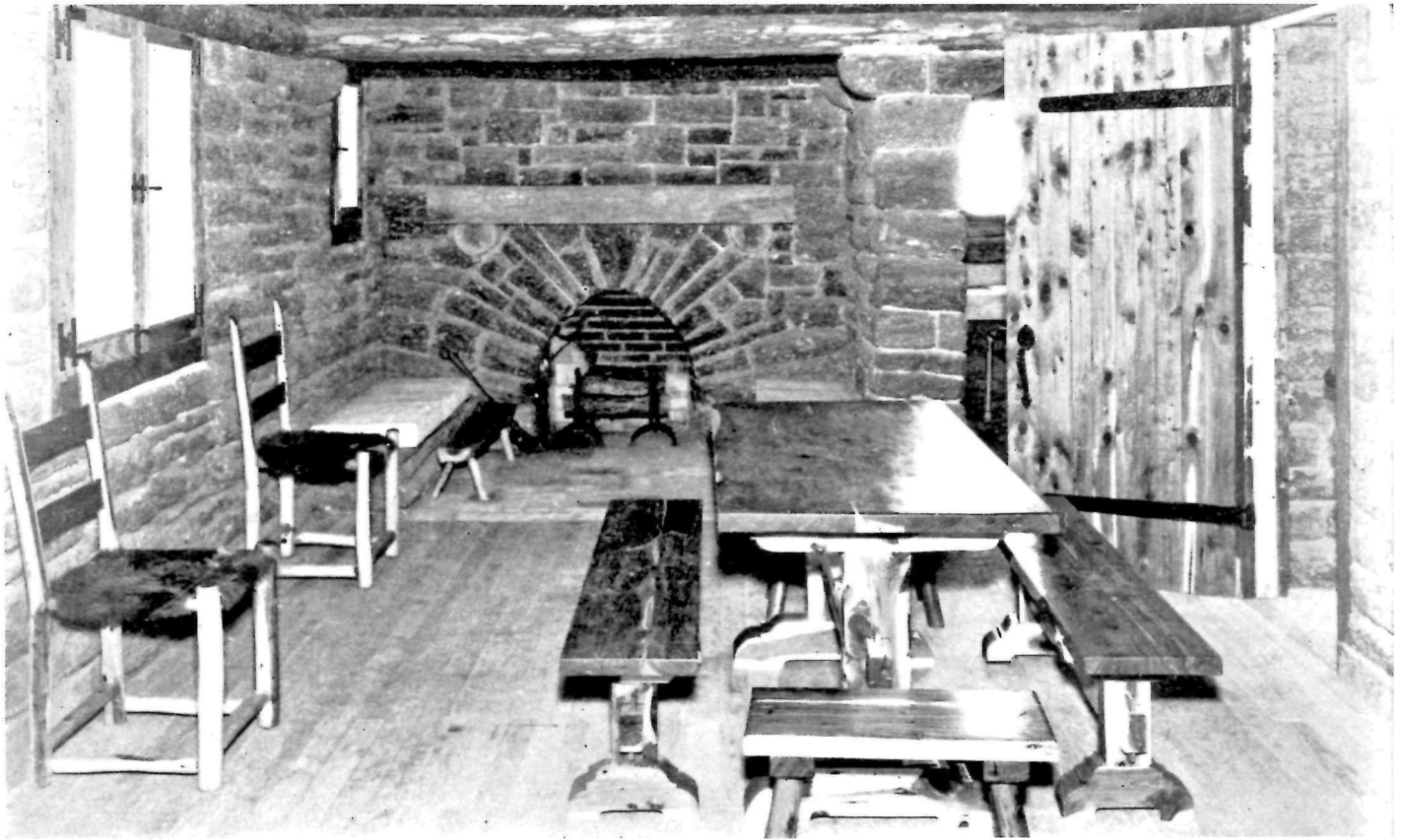
and yet do not appear bizarre. The bright colors of the lamp shades and of the rough woven fabrics of the cushions on the seating furniture are needed accents against the somber background of stone walls and dark wood ceilings.



FURNITURE, LODGE,  
PETIT JEAN STATE PARK, ARKANSAS

Above are pictured some of the furniture items with which the porch, like the lounge illustrated on the facing page, is furnished. The cushions provide comfort without, however, corrupting the basic ruggedness of the furniture itself. To the right are shown the furniture types used in the dining room. The cedar-in-the-round construction is repeated in the understructure of the tables, which are of varying shapes and sizes. The dining chairs are "mountaineer" ladder-backs typical of the locality. Below are bed and divan with which the guest rooms are equipped. The drawer at the foot and the bookshelves at the head of the bed are novel.

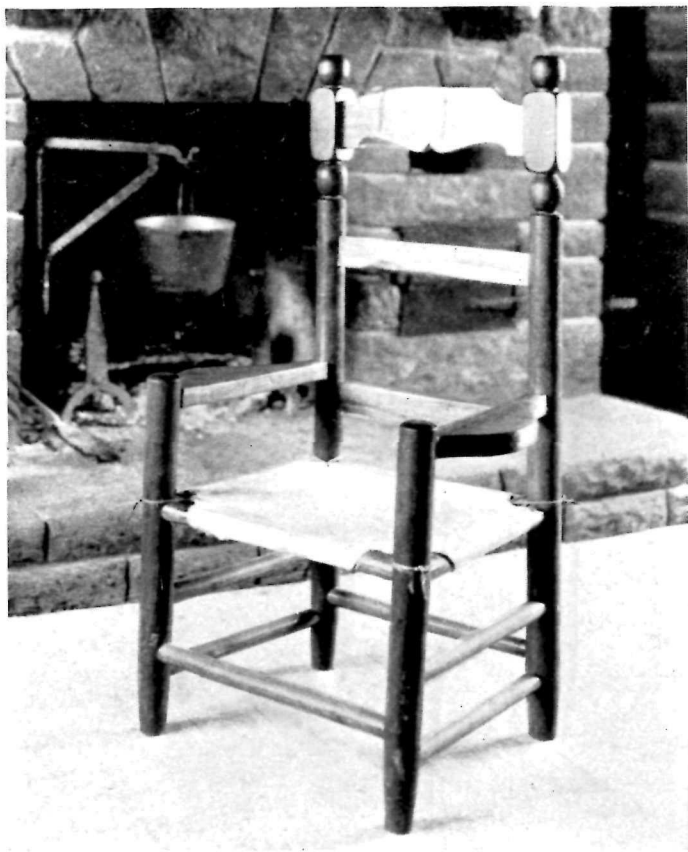




INTERIOR FURNISHINGS, BASTROP STATE PARK, TEXAS

Illustrated on this and the facing page are typical items of furniture in the lodge and cabins of this Texas park. Here cedar is mill-worked with such decorative features as turnings, shaped shoes and brackets, and other refinements of sophisticated furniture styles, all in striking contrast with the

more rustic treatment of the same wood at Petit Jean State Park. The large illustration above pictures a typical cabin interior. The color contrasts typical of cedar are sometimes too striking to appeal to all tastes. Treatment to blend the lighter to the darker wood deserves consideration.





*Lodge, Bastrop State Park, Texas*



*Tavern, New Salem State Park, Illinois*

FIREPLACES, FITTINGS, AND ACCESSORIES

Its purpose makes the fireplace the dominant feature—the very center of things—in any park building interior in which it is built. It is therefore deserving of careful design and expert workmanship so that as a focal point it is attractive and as a needed facility it functions perfectly. It should invite the eye to linger—not the smoke to its eventual disfigurement.

The decorative appeal of the fireplace depends first of all on the material selected and its manner



*Lodge, Bastrop State Park, Texas*



*Cabin, Bastrop State Park, Texas*



*Caretaker's Dwelling, Riverside State Park, Washington*



*Kitchawan Tavern, Westchester County, New York*

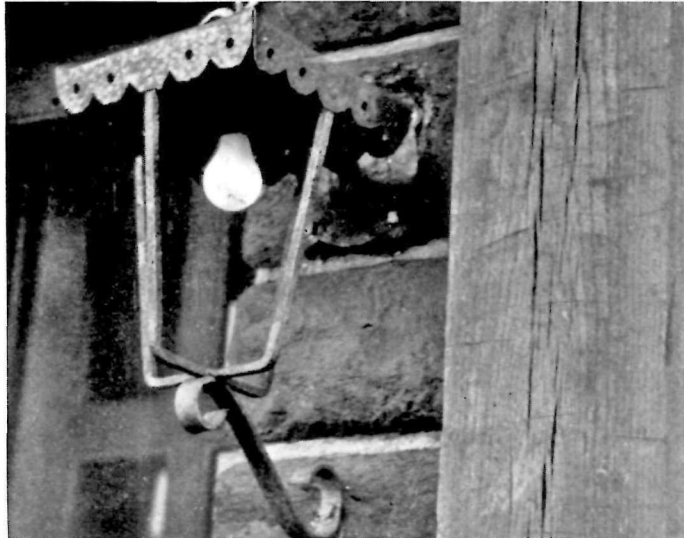
of use. Next in importance are the structural elements integral with it, such as shelf, oven, niches, and many other legitimate interest-giving features. Finally, the fireplace fittings—andirons, cranes, and fire tools—and appropriate decorative accessories of the shelf, chimney breast, and hearth—running from ancient firearms to fabrics and from old-time kitchen utensils to early pottery—can highlight any stylized scheme of furnishings desired.



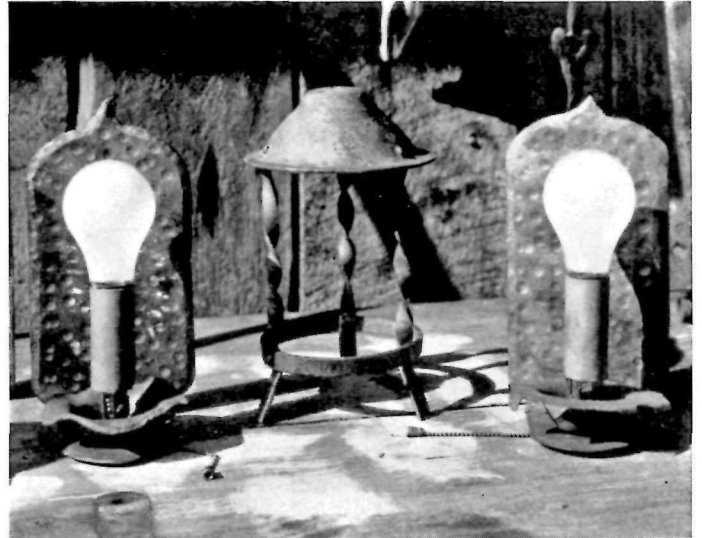
*Caretaker's Dwelling, Cleburne State Park, Texas*



*Bright Angel Lodge, Grand Canyon National Park*



*Bastrop State Park, Texas*



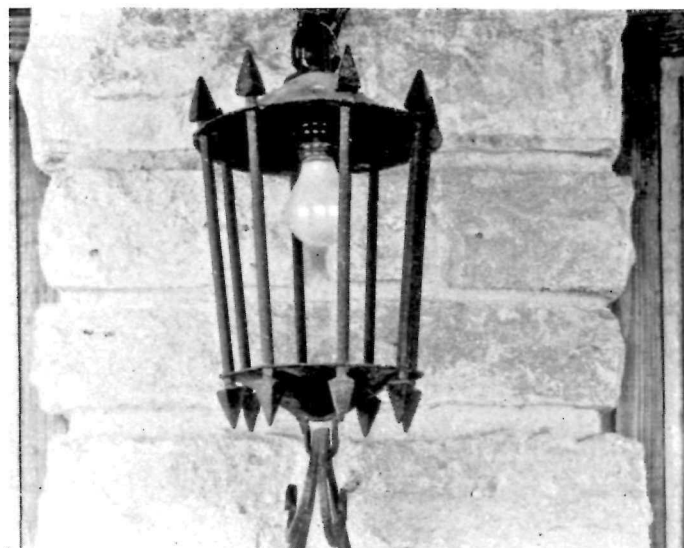
*Lost River State Park, West Virginia*



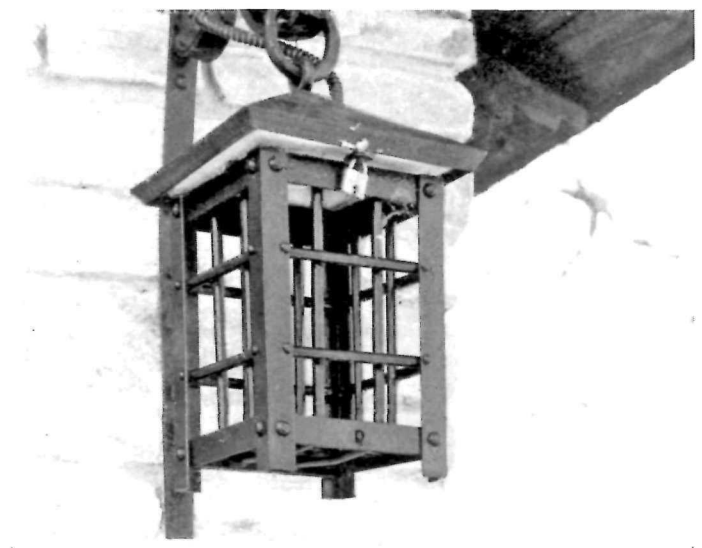
*Mother Neff State Park, Texas*

BRACKET FIXTURES

To be sure, not demonstrably interior lighting fixtures, save those pictured directly above. Nonetheless all are illustrative of the appropriateness of wrought iron against a background of native stone, logs, or other rugged materials. The wall brackets at Mother Neff and Bastrop State Parks have a delicacy that suggests that they would not be unsuitable in an interior use. The two lantern brackets shown below have definitely outdoor weight and scale. They might appear fitting in an open shelter but hardly in an enclosed building.



*Hereford State Park, Texas*



*Lake Brownwood State Park, Texas*