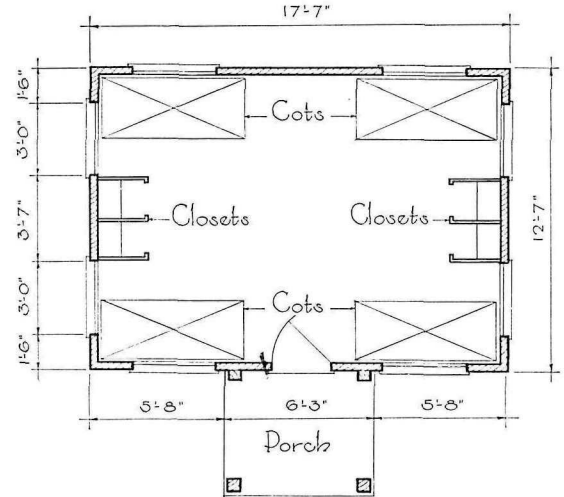
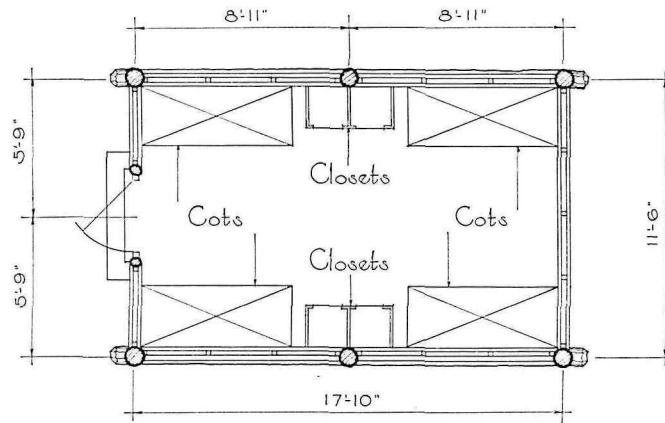


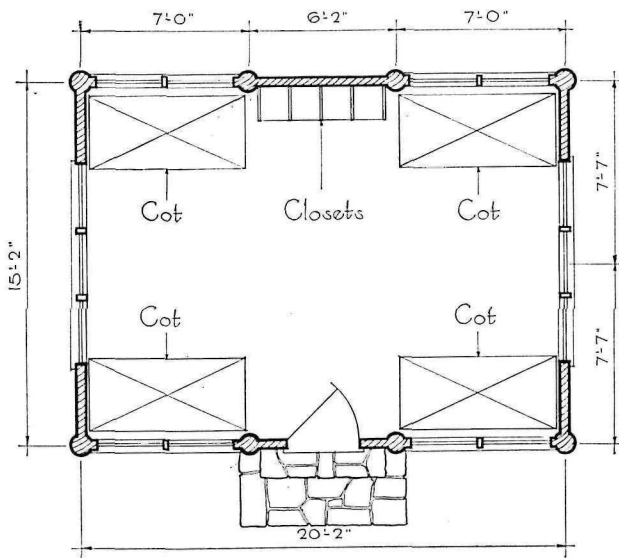
St. Croix River Area - Minnesota



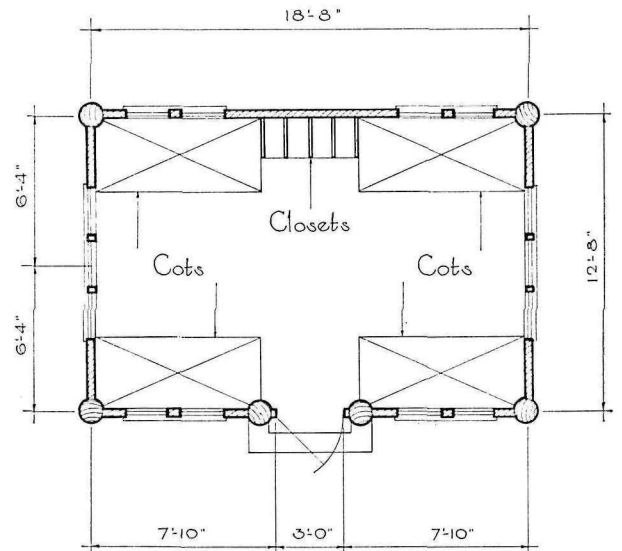
Montserrat Area - Missouri



Silver Creek Area - Oregon



Otter Creek Area - Kentucky



Campers Cabins
Scale $\frac{1}{8}'' = 1'-0''$

Lake Murray Area - Oklahoma



St. Croix Recreational Demonstration Area, Minnesota



Montserrat Recreational Demonstration Area, Missouri

CAMPERS' CABINS WITHOUT PORCHES

All the essentials of organized camp cabins sleeping four campers are present in the cabins here grouped and shown in plan on the facing page. Structural economies, recommended distances between cots, large openings for light and air, and individual closets for the occupants fix size and arrangement. Any individuality possible is largely a matter of surface treatment and the option of whether to have a porch and if so the form it will take. Common to the cabins of this group is the lack of a porch, save the rudimentary one of the Montserrat subject.



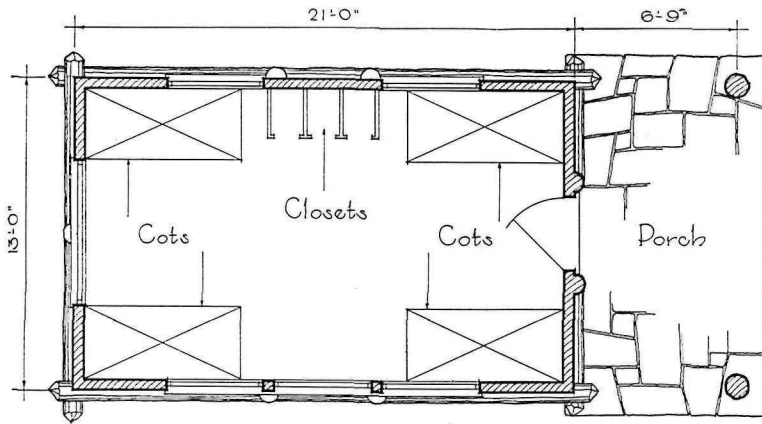
Silver Creek Recreational Demonstration Area, Oregon



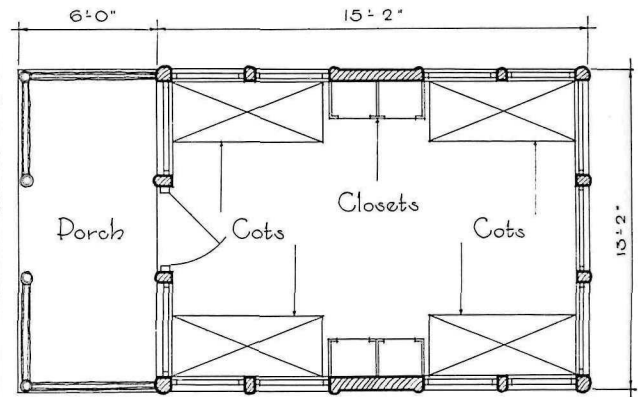
Otter Creek Recreational Demonstration Area, Kentucky



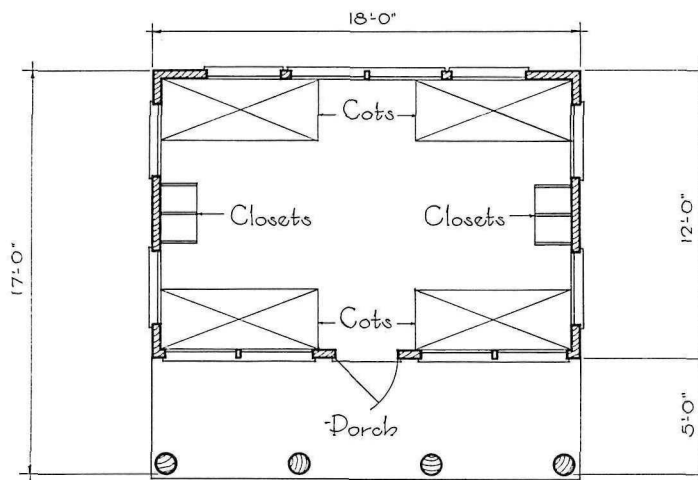
Lake Murray Recreational Demonstration Area, Oklahoma



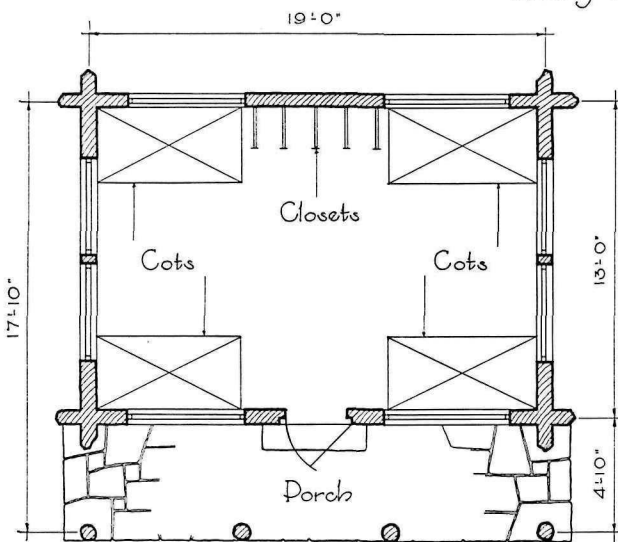
Raccoon Creek Area - Pennsylvania



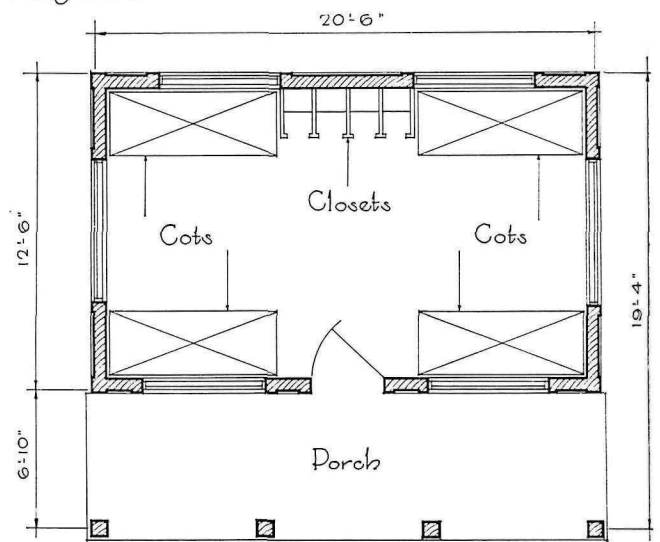
Catootin Area - Maryland



Hickory Run Area - Pennsylvania



Beach Pond Area - Rhode Island



Campers Cabins
Scale 1/8" = 1'-0"

Bear Brook Area - New Hampshire



Raccoon Creek Recreational Demonstration Area, Pennsylvania



Catoctin Recreational Demonstration Area, Maryland

CAMPERS' CABINS IN THE NORTHEAST

Grouping these cabins together is entirely on the basis of geography. They exhibit no special features unknown in other parts of the country. Two have entrances and porches at the end; three are entered on the long side and so have longer side porches. Noteworthy in the group is the Catoctin cabin, outstanding for its simple excellence and true craftsmanship. If built-in benches are not a part of the cabin porches, the steps should be wide enough to offer a place for the occupants to sit out-of-doors.



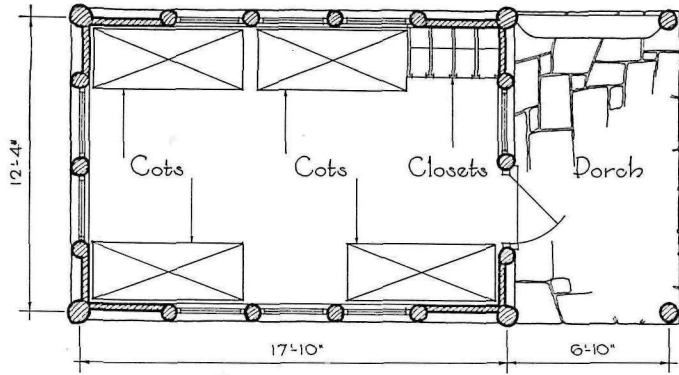
Hickory Run Recreational Demonstration Area, Pennsylvania



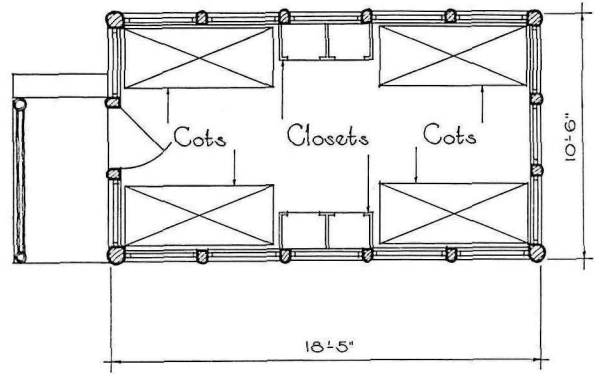
Beach Pond Recreational Demonstration Area, Rhode Island



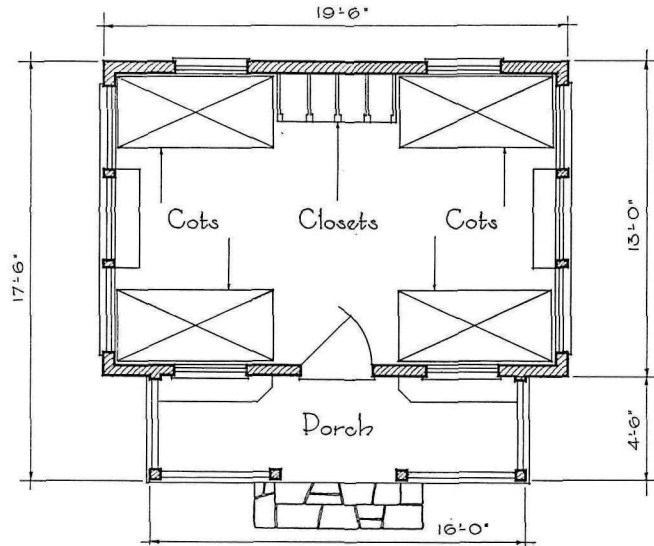
Bear Brook Recreational Demonstration Area, New Hampshire



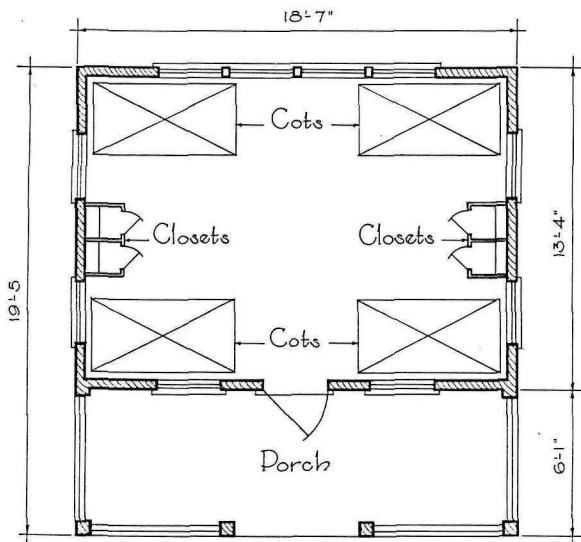
Falls Creek Falls Area - Tennessee



Chopawamsic Area - Virginia

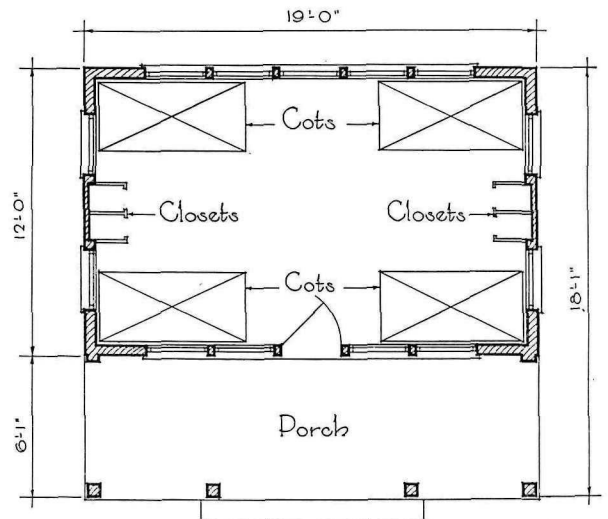


Alexander H. Stephens Memorial Park - Georgia



Cheraw Area - South Carolina

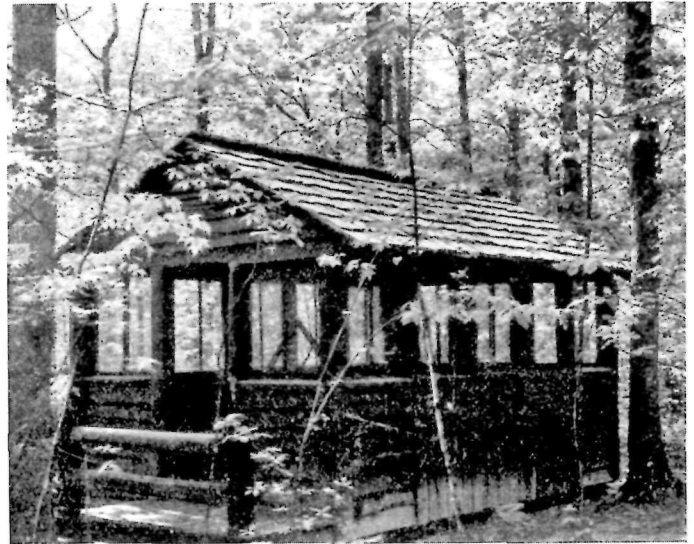
Campers Cabins
Scale $\frac{1}{8}'' = 1'-0''$



Swift Creek Area - Virginia



Falls Creek Falls Recreational Demonstration Area, Tennessee



Chopawamsic Recreational Demonstration Area, Virginia

CAMPERS' CABINS IN THE SOUTHEAST

Another group of camp cabins assembled on a geographic basis and not because of any structural or other close kinship. The plans opposite show the cabins at the top of the page to have end porches and entrance doors and the others to have side porches and entrances. The timbers of the upper cabins are logs in the round; those of the lower three are square. Alternative locations for the closets will be noticed; all four may be banked opposite the entrance door, or two may be spotted on each side between the cots.



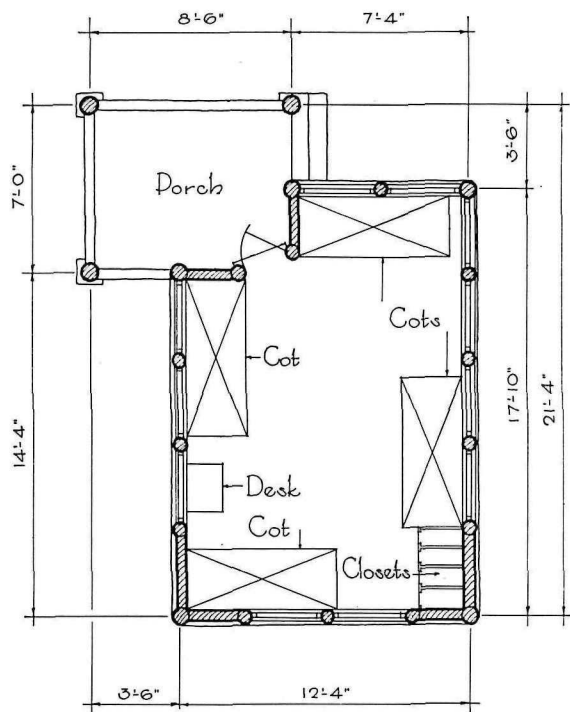
Alexander H. Stephens Memorial Park, Georgia



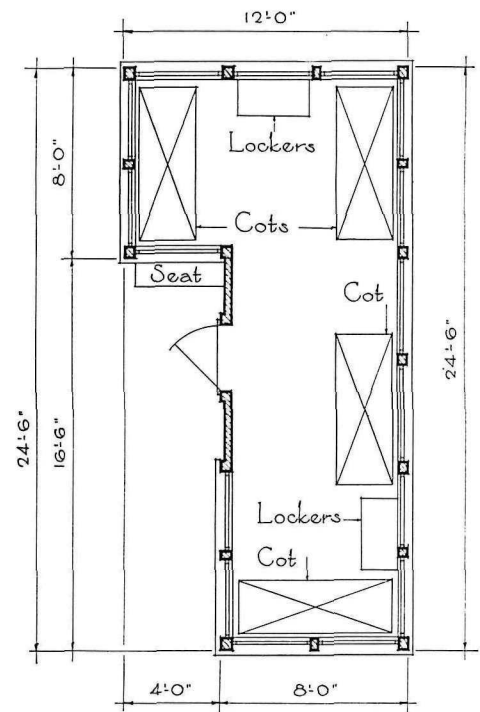
Cheraw Recreational Demonstration Area, South Carolina



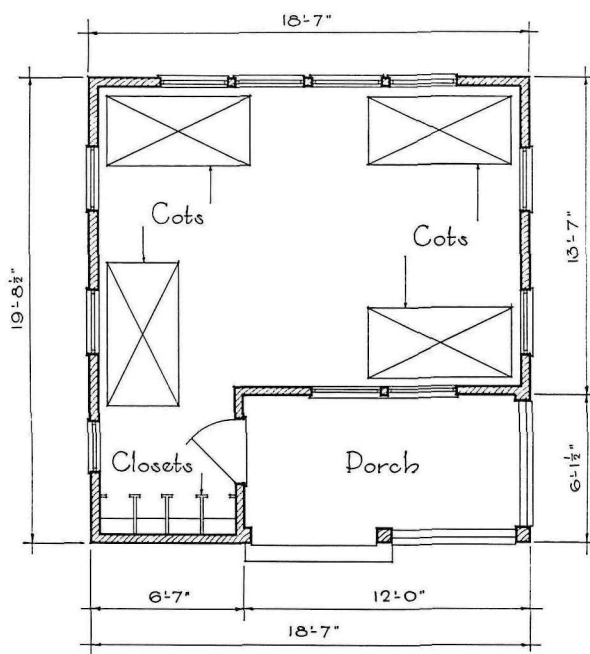
Swift Creek Recreational Demonstration Area, Virginia



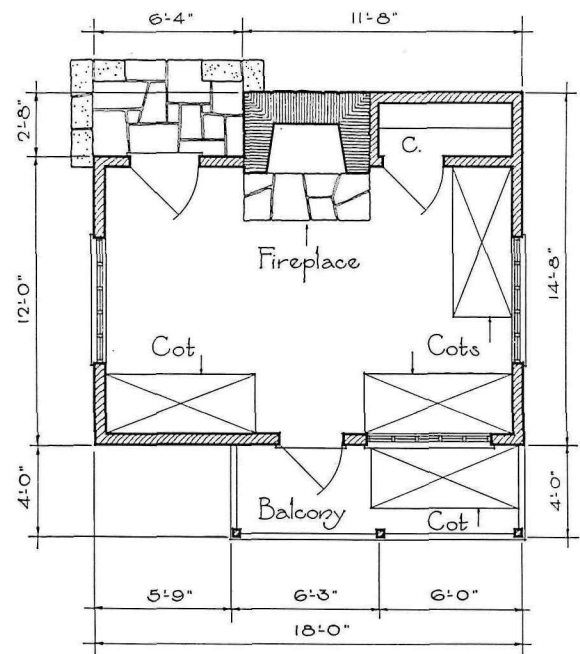
Falls Creek Falls Area - Tennessee



Hard Labor Creek Area - Georgia



Kings Mountain Area - South Carolina



Mendocino Woodlands Area - California

Campers Cabins
Scale 1/8" = 1'-0"



Falls Creek Falls Recreational Demonstration Area, Tennessee



Hard Labor Creek Recreational Demonstration Area, Georgia

NONTYPICAL FOUR-BED CAMPERS' CABINS

The plans on the facing page prove that departures from the typical rectangular sleeping cabin are possible without compromising basic requirements. The variety thus introduced into crowded cabin groups should be welcomed widely. We have now reviewed camp cabins from the Atlantic to the Pacific and only in sunny California has a

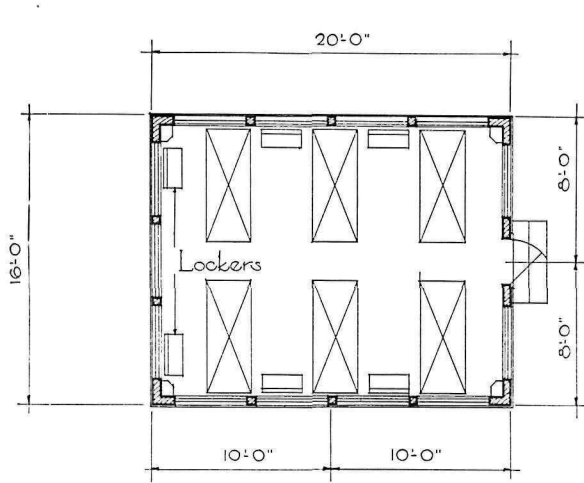
fireplace been incorporated. This is something to ponder, along with the unique distribution of cots—three indoors near the fireplace and one outside in the fog. This may have something to do with the ratio of native sons to newcomers. Probably that is three to one, and the stranger is quarantined out on the balcony to toughen.



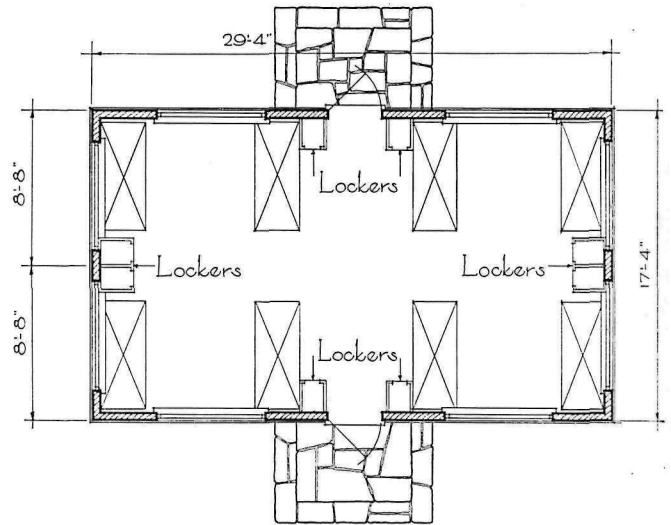
Kings Mountain Recreational Demonstration Area, South Carolina



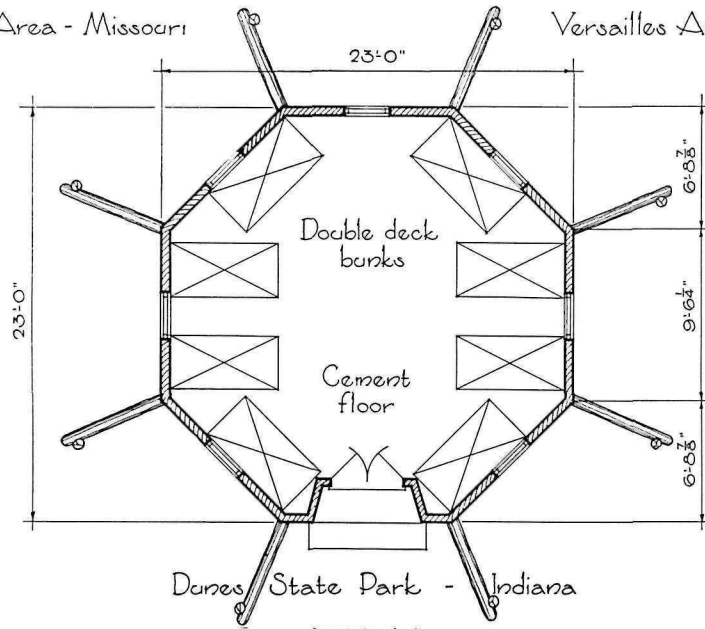
Mendocino Woodlands Recreational Demonstration Area, California



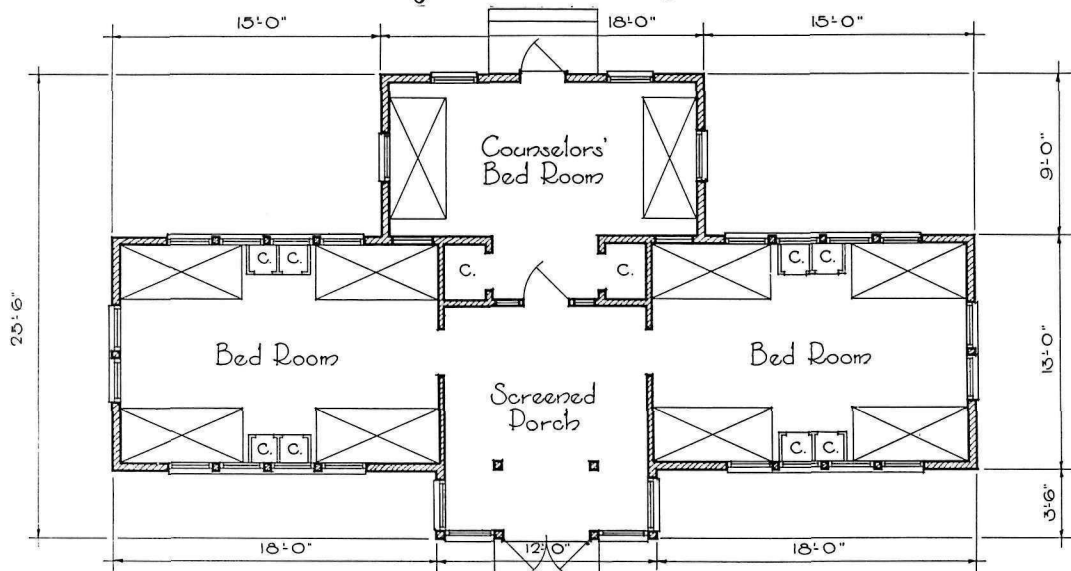
Cuivre River Area - Missouri



Versailles Area - Indiana



Dunes State Park - Indiana



Camp Cabins

Chopawamsic Area - Virginia

Scale $\frac{3}{32}'' = 1'-0''$



Cuivre River Recreational Demonstration Area, Missouri



Versailles Recreational Demonstration Area, Indiana

CAMPERS' CABINS ACCOMMODATING MORE THAN FOUR

Although a sleeping capacity of four in a camp cabin is widely held to be the desirable ideal, some viewpoints consider a capacity of six or eight allowable, as the plans on the facing page indicate.

The six-bed cabin at Cuivre River, shown at upper left, would be more acceptably arranged if four of the beds were moved into the corners to give a bed spacing equivalent to that of the eight-bed cabin on the Versailles Recreational Demonstration Area, shown at upper right.

The chief accomplishment of the striking tepee-like structure of octagonal plan is the thrill it holds for youth. But this is not arrived at without

sacrifice. In a housing that is more picturesque than well-ventilated, the eight double-deck bunks crowd sixteen sleepers in serious violation of space recommendations. Even though the eight double-deckers were single cots, the spacing would still be substandard.

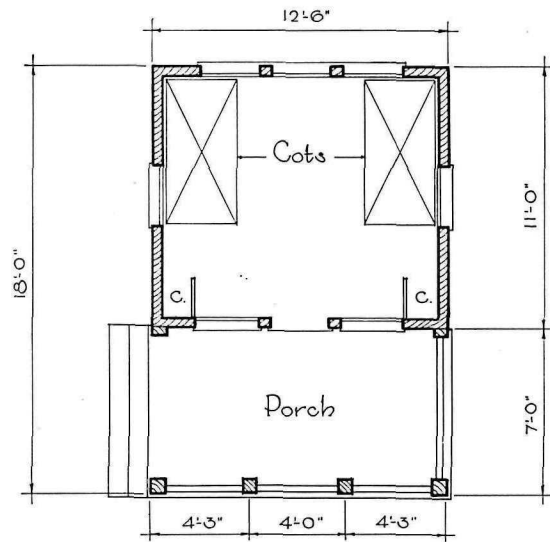
The "saddlebag" cabin at Chopawamsic is the arrangement recommended in camps for very small children. It brings eight children together under one roof in two four-room dormitories, separated by an entry and a sleeping room for two leaders. This permits one leader to be off duty at certain hours with no relaxing of supervision.



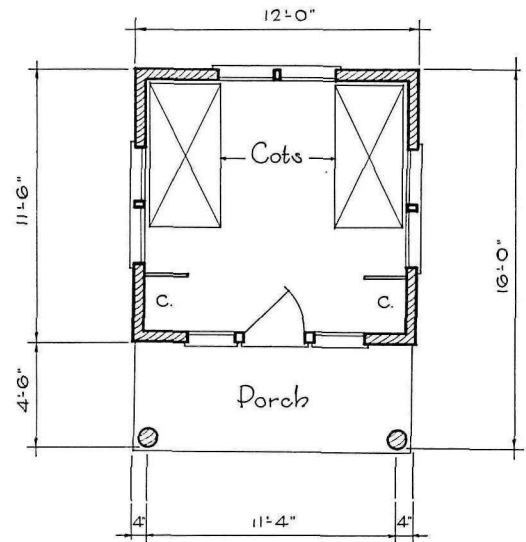
Dunes State Park, Indiana



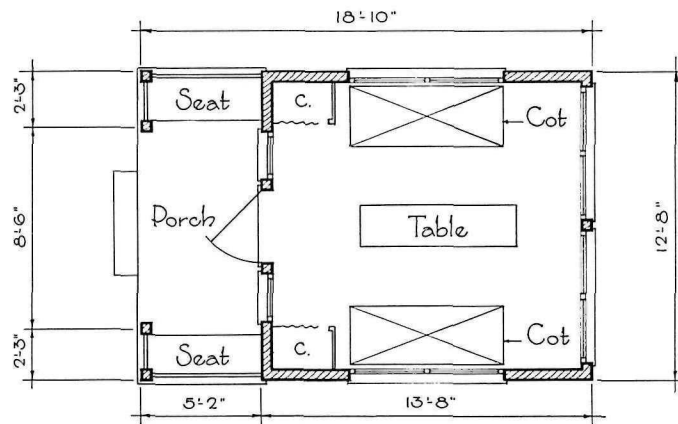
Chopawamsic Recreational Demonstration Area, Virginia



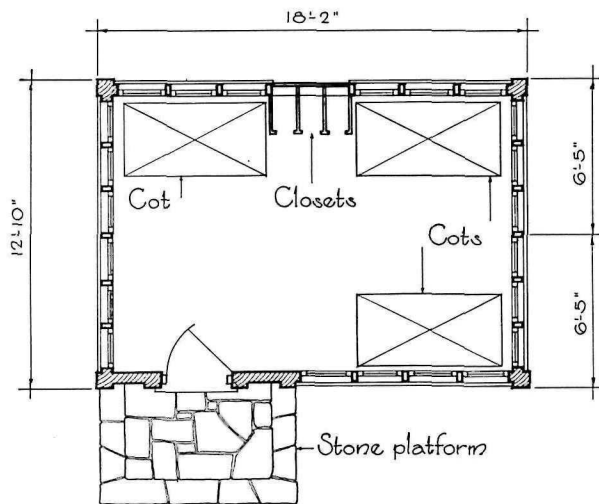
Kings Mountain Area - South Carolina



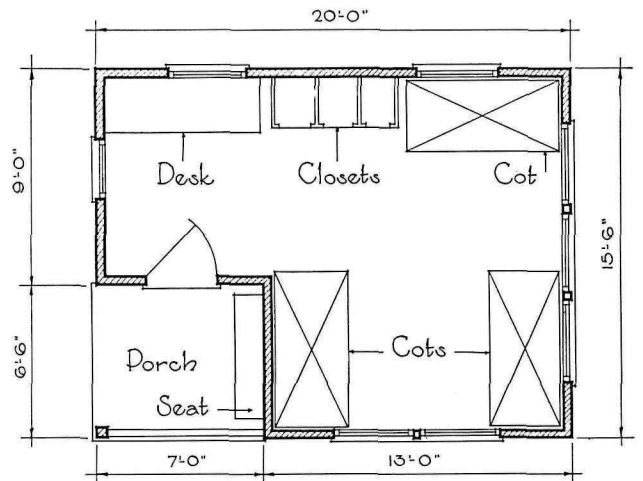
Hickory Run Area - Pennsylvania



French Creek Area - Pennsylvania



Yankee Springs Area - Michigan



Alexander H. Stephens Memorial Park - Georgia

Camp Counselors' Cabins
Scale $\frac{1}{8}'' = 1'-0''$



Kings Mountain Recreational Demonstration Area, South Carolina



Hickory Run Recreational Demonstration Area, Pennsylvania

COUNSELORS' CABINS

Sleeping quarters for counselors in the units of recreational demonstration camps are usually very like the campers' cabins of the area, in a reduced size that accommodates two, or at most three, leaders. Both capacities are shown in the plans opposite. The same openness of construction, spacing of cots, and provision of closets that determine the campers' cabins, plus space for a small table, and some chairs, fix the size and arrangement of the leaders' cabins.



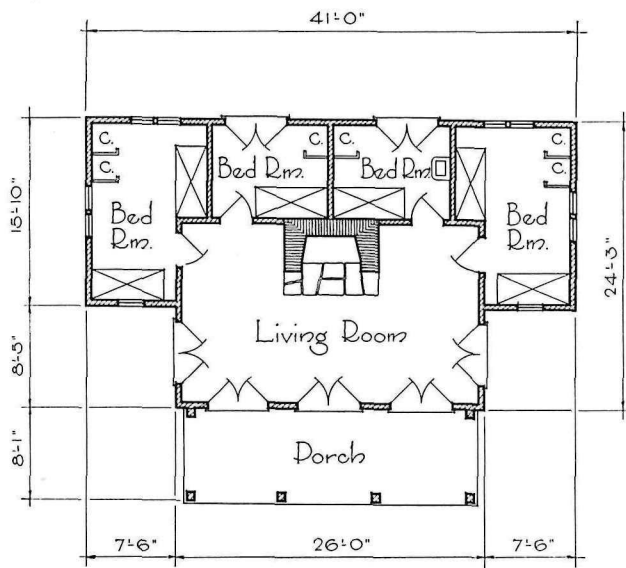
French Creek Recreational Demonstration Area, Pennsylvania



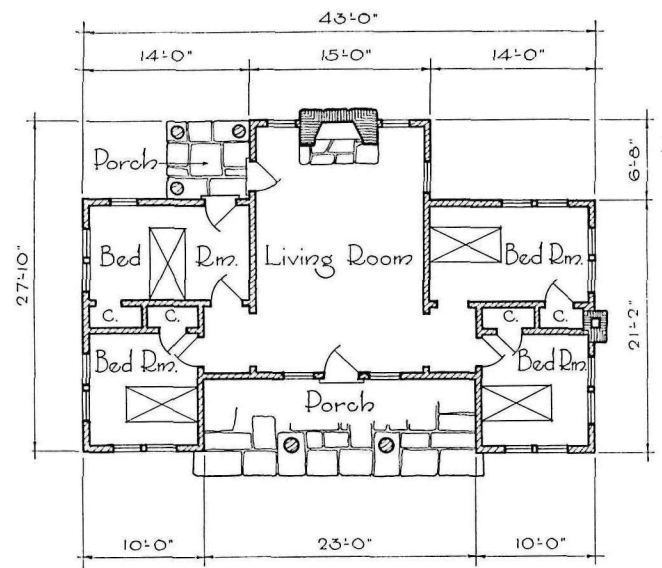
Yankee Springs Recreational Demonstration Area, Michigan



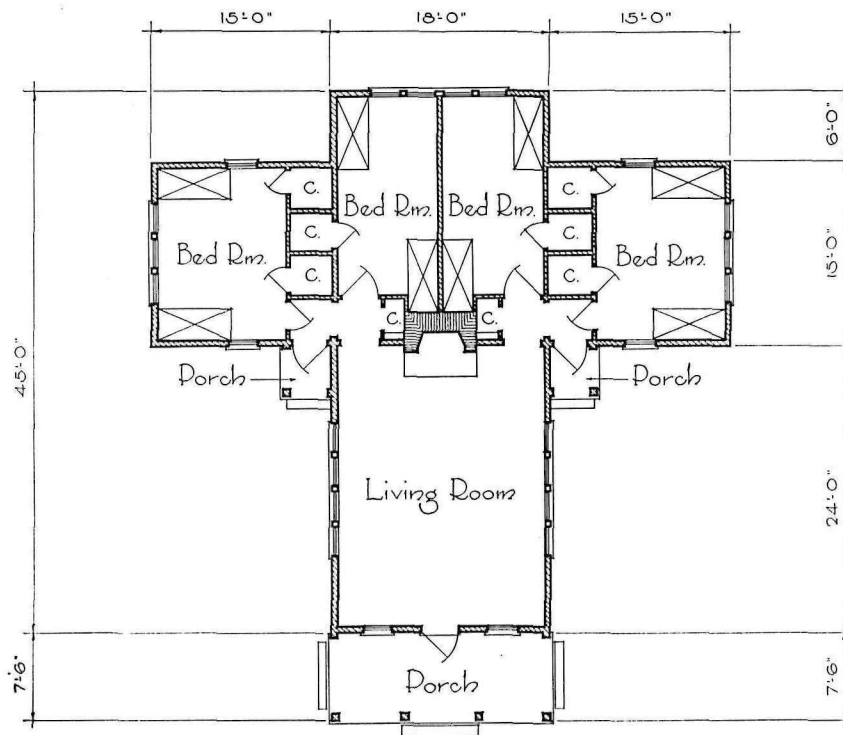
Alexander H. Stephens Memorial Park, Georgia



Montserrat Area - Missouri



Raccoon Creek Area - Pennsylvania



Chopawamsic Area - Virginia

Staff Quarters
Scale 1/8"=1'-0"

Typical provision of living quarters for staff members who may not be required to sleep in the units of an organized camp is this arrangement of living room, porch, and four bedrooms accommodating six cots. Sometimes a camping program includes winter use of the staff building for short-term camping by small groups. When this eventuates, one of the bedrooms is appropriated for a kitchen, and a thimble in a chimney to receive the smokestack of a small cook stove has useful purpose.



Montserrat Recreational Demonstration Area, Missouri

Almost identical with the staff quarters above in its space allocation and sleeping capacity, this building adds the benefits of cross-corner ventilation for all bedrooms. On the other hand, it does not equal the economy of the other in the matter of chimney location, for, in anticipation of a stove being set up in a bedroom for cooking purposes in any winter use, it has been necessary to include a second chimney.

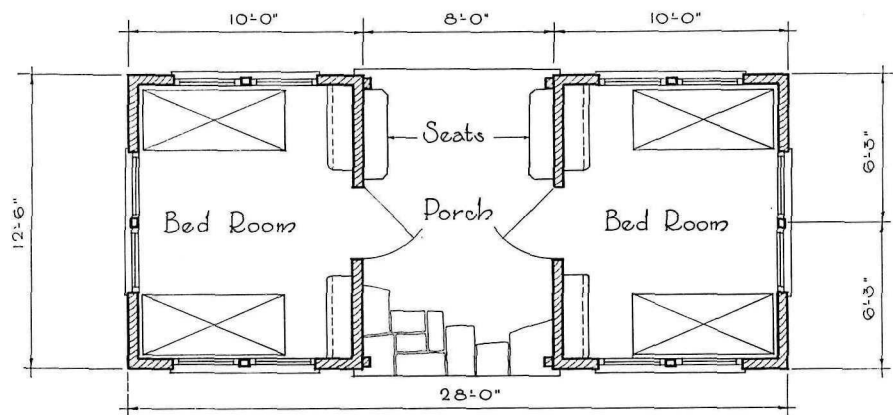


Raccoon Creek Recreational Demonstration Area, Pennsylvania

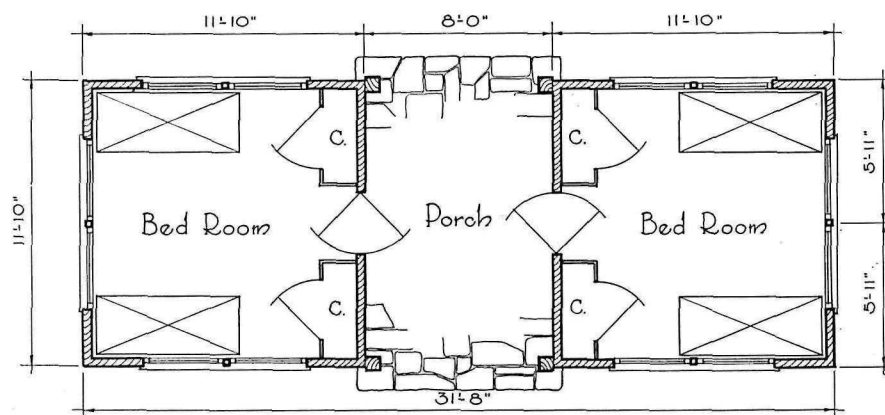
Here the same plan elements are to be found as in the two plans above, but less compactly grouped and on a little more spacious scale. Its chimney is located to provide the extra flue for a cook stove set up in a bedroom in the event of winter camping. The three exposures of the living room are a good feature, but two of the bedrooms are ill-favored for light and ventilation.



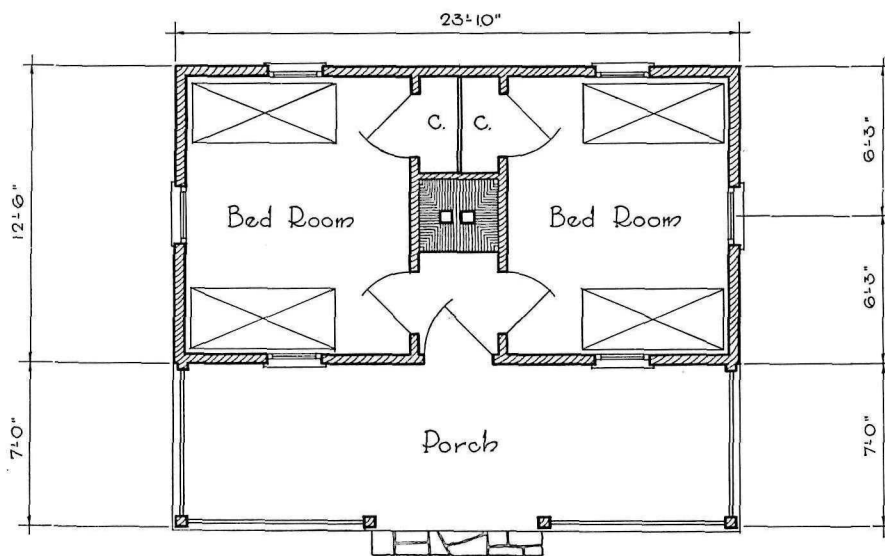
Chopawamsic Recreational Demonstration Area, Virginia



Cuivre River Area - Missouri



Montserrat Area - Missouri



Kings Mountain Area - South Carolina

Camp Help's Quarters
Scale $\frac{1}{8}'' = 1'-0''$

HELP'S QUARTERS

The breezeway cabin plan is suited well to the housing of camp employes for the greater privacy it gives to the two bedrooms. Because the help may be something of an assortment, there is an advantage in this plan. Whether the porch is placed between the two rooms, as here, or in equivalent area in some other arrangement, has no considerable effect on cost.



Cuivre River Recreational Demonstration Area, Missouri

This help's sleeping cabin of breezeway type is almost the counterpart in plan of the one shown above it. The fenestration is the same. It is a trifle larger. It substitutes closets for the open shelves and hanging rods of the other. Screening the open ends of the breezeway would add to the comfort of these quarters, and this could be done at small cost in relation to size of the area screened.



Montserrat Recreational Demonstration Area, Missouri

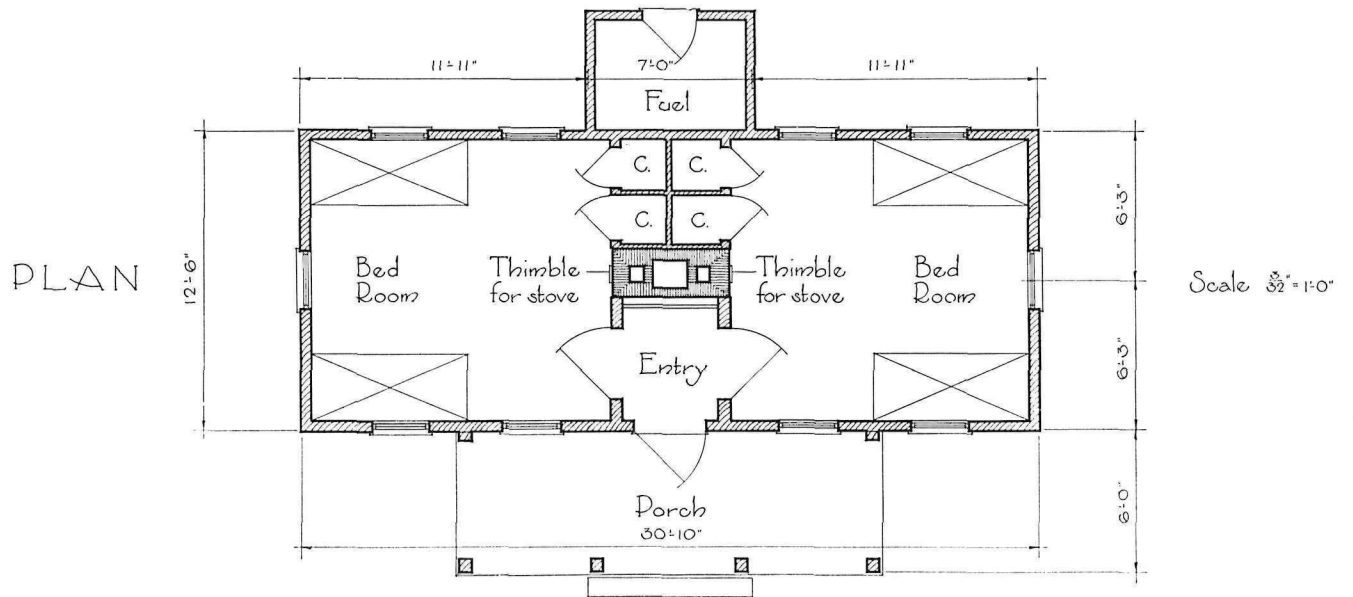
If a unified structural theme is to carry through an entire camp, and this is desirable, even the somewhat detached help's quarters should have the same outward characteristics as other buildings. Such is the case at Kings Mountain Recreational Demonstration Area where the help's cabins, save for the added chimney, closely duplicate the campers' cabins.



Kings Mountain Recreational Demonstration Area, South Carolina



Help's Quarters, Swift Creek Recreational Demonstration Area, Virginia



The employees' housing here illustrated is more commodious than the examples previously reviewed, and probably larger than absolutely necessary. Where funds are limited, something more

compact is recommended. Doubtless space for a stove in each bedroom, in anticipation of short-term winter camping, induced the greater size. The shed at the rear provides fuel storage space.