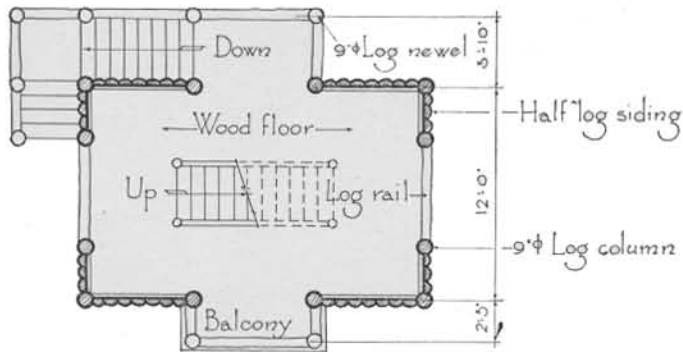
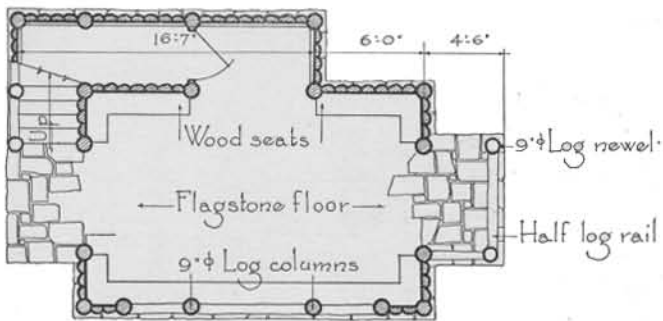


THIRD FLOOR PLAN



SECOND FLOOR PLAN

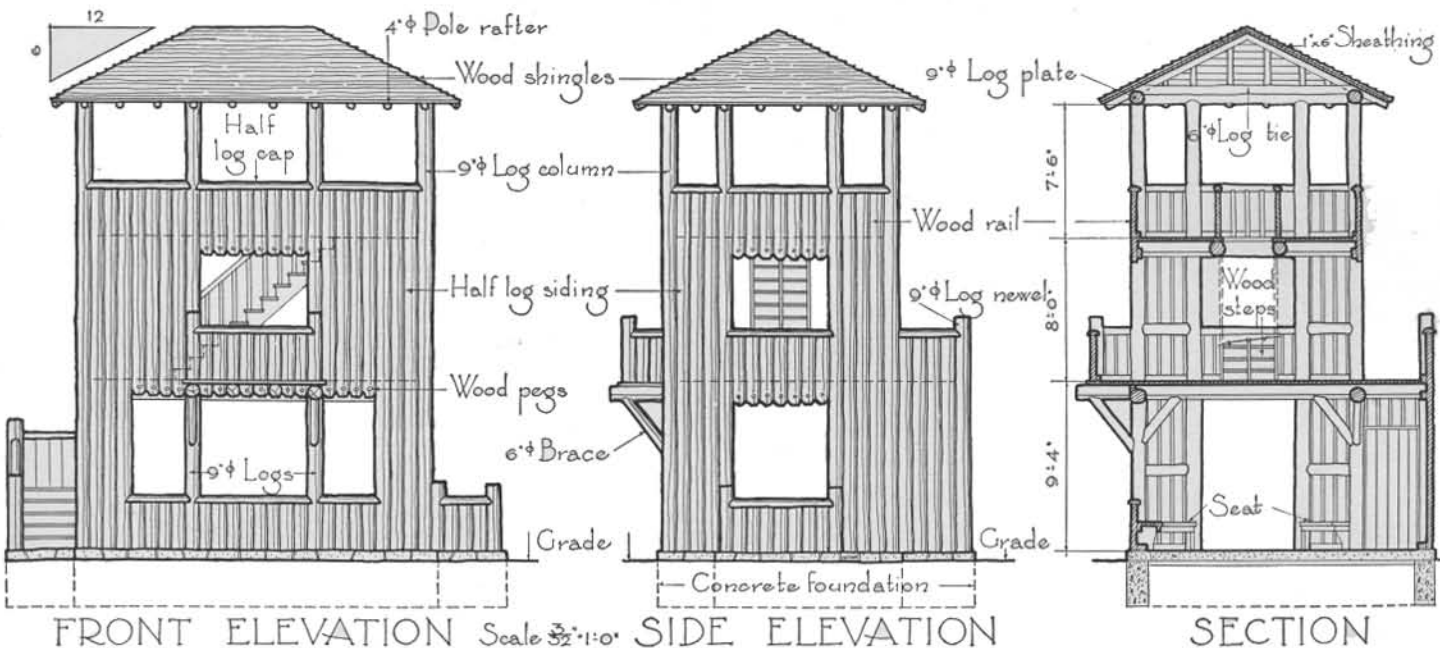


FIRST FLOOR PLAN



Lookout Tower - Cumberland Falls State Park - Kentucky

The answer to a demand for a wood-framed lookout tower of modest height may lie in the direction of the solution pursued with some degree of success by this example. The structural weaknesses of the typical trussed wood tower are avoided here by limiting the height and by enclosing the framing in large part with vertical logs. The design of future lookouts of logs might well be developed from this pioneering structure rather than from the hazardous latticed type.



FRONT ELEVATION Scale 3/8" = 1'-0"

SIDE ELEVATION

SECTION