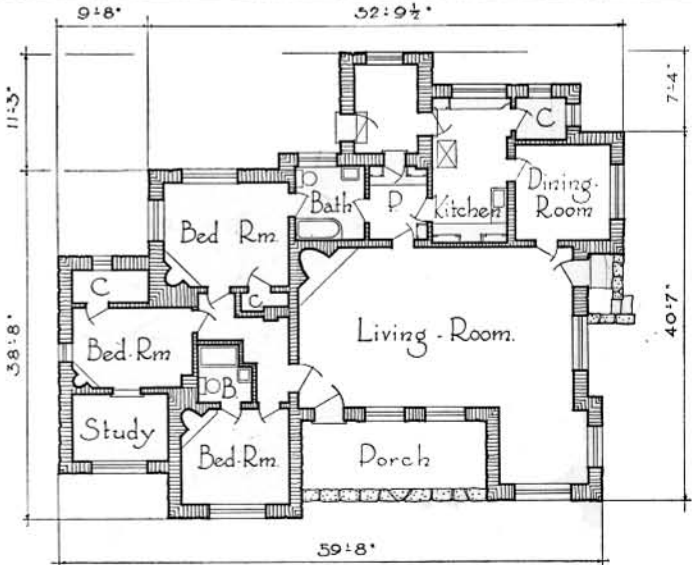




*Superintendent's Residence, Mesa Verde National Park*

Definitely regional by reason of the technique of its masonry, the projecting vigas, and the shifting parapet levels surmounting flat roofs, this example is rather larger than most of the dwellings shown herein for the accommodation of the family of park custodian or superintendent. The building seems particularly well suited to site and to region. The several corner fireplaces are in the spirit of the architectural prototypes of the American Southwest.



FLOOR PLAN  
Scale  $\frac{3}{4}$ " = 1'-0"