

Waterfalls

Pictured Rocks
National Lakeshore
National Park Service



Munising Falls - Walk the paved .25 mile trail up the cool, shaded sandstone canyon along Munising Creek to the falls. Two sets of stairs lead to elevated platforms enabling views of the 50 foot waterfall which drops over a sandstone cliff. Watch for ferns, wildflowers, and an occasional mink. The trail is fully accessible to the central falls viewing platform. Please stay on the paved trail *Pets are not permitted on this trail.*

Miners Falls - This self-guiding interpretive trail is 1.2 miles long. The trail ends at Miners Falls with views of the Miners Basin along the way. There are 77 steps leading down to the viewing platform at the falls where the Miners River cascades some 50 feet over the sandstone outcrop. Please stay on the paved trail *Pets are not permitted on this trail.*

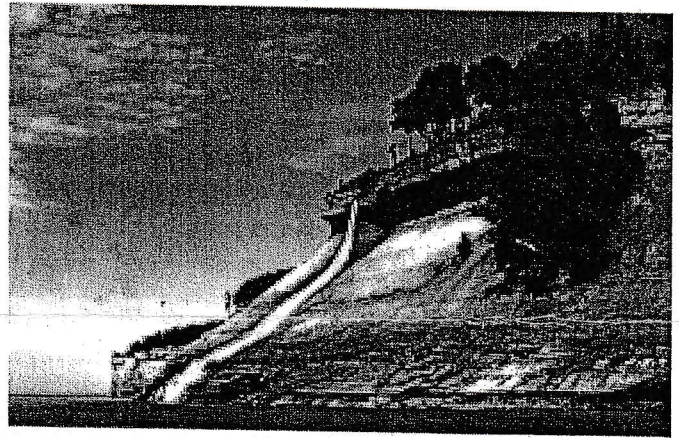
Bridalveil Falls - Photographs of Bridalveil are featured on several postcards from the area but the falls are only viewable by water or from a distance at Miners Castle. The falls are northeast of Miners Beach .6 miles. The falls are not viewable from the North Country Trail. Bridalveil is a seasonal waterfall which slows to a trickle in summer and fall. *Pets are NOT permitted on the North Country Trail.*

Mosquito Falls - This waterfall is accessible from the Chapel Trailhead. Walking toward Mosquito Beach, a side trail leads .9 mile to the falls which drops over a 8 foot high rock shelf on the Mosquito River. Watch for river otter and beaver in the stream. *Pets are NOT permitted on this trail.*

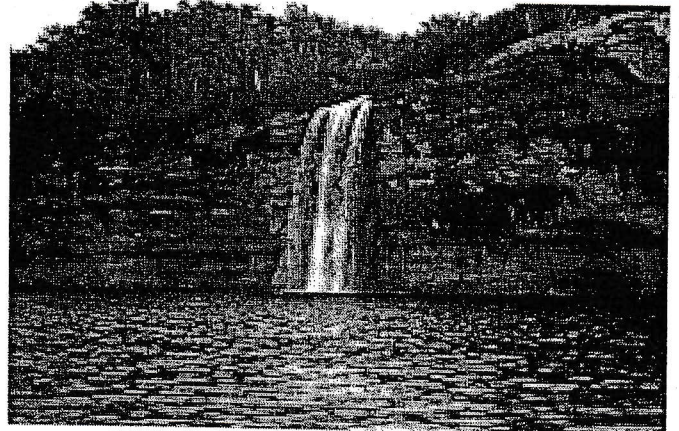
Chapel Falls - A 1.5 mile trail leads to Chapel Falls from the Chapel Trailhead. The trail is on an old roadbed with several small hills. Two viewing platforms along the way provide views of the scenic Chapel Basin. Chapel Falls cascades some 60 feet down the sandstone cliffs on its way to Chapel Lake. *Pets are NOT permitted on this trail.*

Spray Falls - This remote waterfall is best viewed by boat from Lake Superior as it is not accessible on the North Country Trail. Spray Falls is 1.75 miles northeast of Chapel Rock. The 1856 shipwreck "Superior" lies at the base of the falls in 20 feet of water. *Pets are NOT permitted on the North Country Trail.*

Sable Falls - This scenic cascade is 1 mile west of Grand Marais off H-58. Sable Falls tumbles 75 feet over several cliffs of Munising and Jacobsville sandstone formations on its way to Lake Superior. The first viewing platform to the falls is down a staircase. The .5 mile trail to Lake Superior beach is a nice walk. *Pets are not permitted on this trail.*



Bridalveil Falls



Spray Falls

Other Area Waterfalls

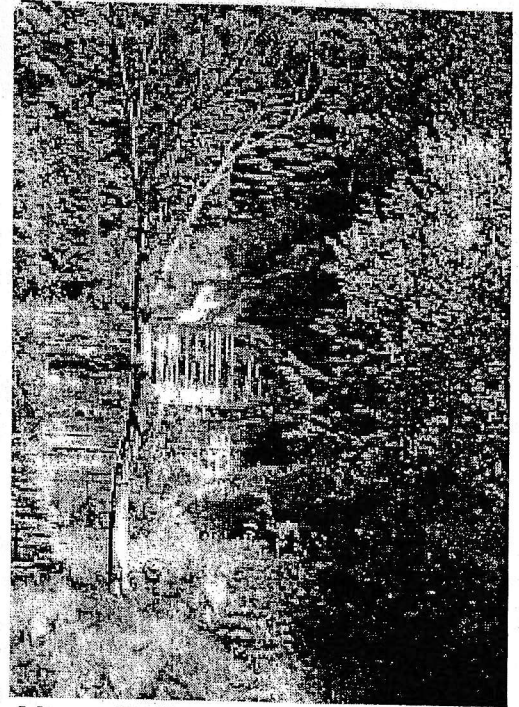
Rudy M. Olson Memorial (formerly Tannery) Falls - This small waterfall is hidden in a cove near the junction of H-58 and Washington Street in Munising. The falls drops over a 40 foot sheer cliff on private lands donated to the Michigan Natural Features Inventory. A rustic .5 mile trail provides public access. Please park on Washington Street near the brick municipal pumphouse building. *Parking is not permitted on H-58 - please park on Washington Street.*

Alger Falls - Located next to M-28 a mile south of Munising, Alger Falls is viewable from the side of the road. *As you park to see the falls, please use caution due to the heavy traffic.*

Scott Falls - This small waterfall is located on the south side of M-28 near the Rathfoot DOT Wayside one mile east of Au Train on M-28. Due to heavy traffic, park at the wayside and cross M-28 with caution. The 10 foot high waterfall drops through a hole in the sandstone bedrock.

Wagner Falls - Listed on some maps as a Michigan State Park, this Department of Natural Resources State Scenic Site is located .5 miles west of M-28 on M-94. A short hike of .1 mile leads to a boardwalk viewing platform of the falls that cascade down the sandstone rock.

Laughing Whitefish Falls - A State of Michigan Scenic Site, Laughing Whitefish Falls is located 28 miles from Munising at the Dorsey Road and M-67 junction in Sundell. The falls are accessible by a .5 mile hike from the trailhead. Picnicing and water are also available at the trailhead.



Alger Falls



Wagner Falls

Please use caution while hiking to area waterfalls. Stay on the trails and watch for uneven footing. Pets must be on a 6 foot leash on trails to some waterfalls. Pets are not permitted at all waterfalls..