

Potomac Heritage Trail

George Washington Memorial Parkway
Potomac Heritage National Scenic Trail



Plan Your Visit

There are many ways to access the **Potomac Heritage Trail (PHT)**, including from trails within adjacent parks. Parking is often limited. Please use caution along hiking trails and be prepared for rugged terrain.

Local Resources:

George Washington Memorial Parkway
www.nps.gov/gwmp
703-289-2500

Potomac Heritage National Scenic Trail
www.nps.gov/pohe

Fairfax County Park Authority
www.fairfaxcounty.gov/parks

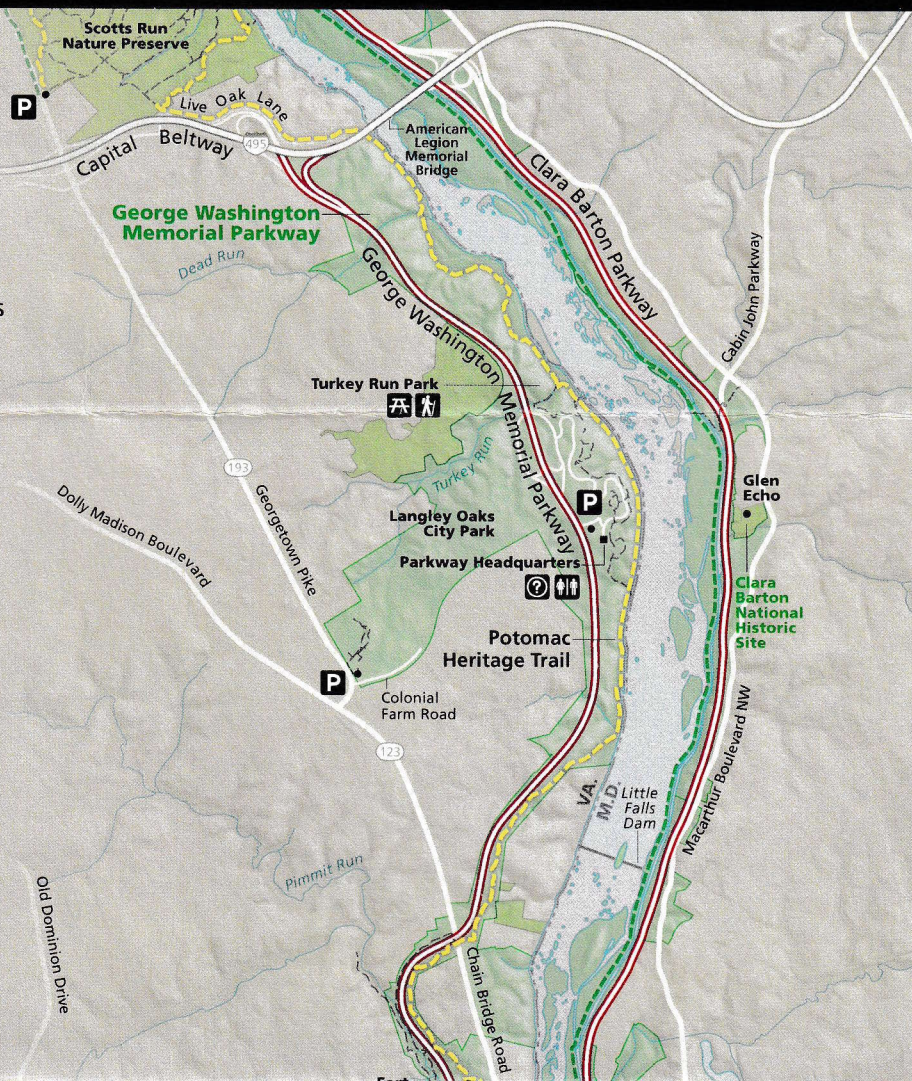
Arlington County Parks and Recreation
parks.arlingtonva.us

Northern Virginia Parks
www.novaparks.com

Plan Your Transit:

**Washington Metropolitan Area
Transit Authority (Metro)**
www.wmata.com

Arlington Transit
www.arlingtontransit.com



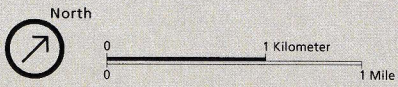
Potomac Heritage NST network



The Potomac Heritage Trail within the Parkway is a segment of the Potomac Heritage National Scenic Trail, a developing trail network between the mouth of the Potomac River and the Allegheny Highlands.

- George Washington Memorial Parkway
- Potomac Heritage Trail (George Washington Memorial Parkway)
- Other Potomac Heritage NST segments
- Other trails and routes
- Rapids and hazardous area

- Bike share station
- Information
- Metro
- Parking
- Restrooms



To assist with trail maintenance, contact the Potomac Appalachian Trail Club at www.patc.net.

