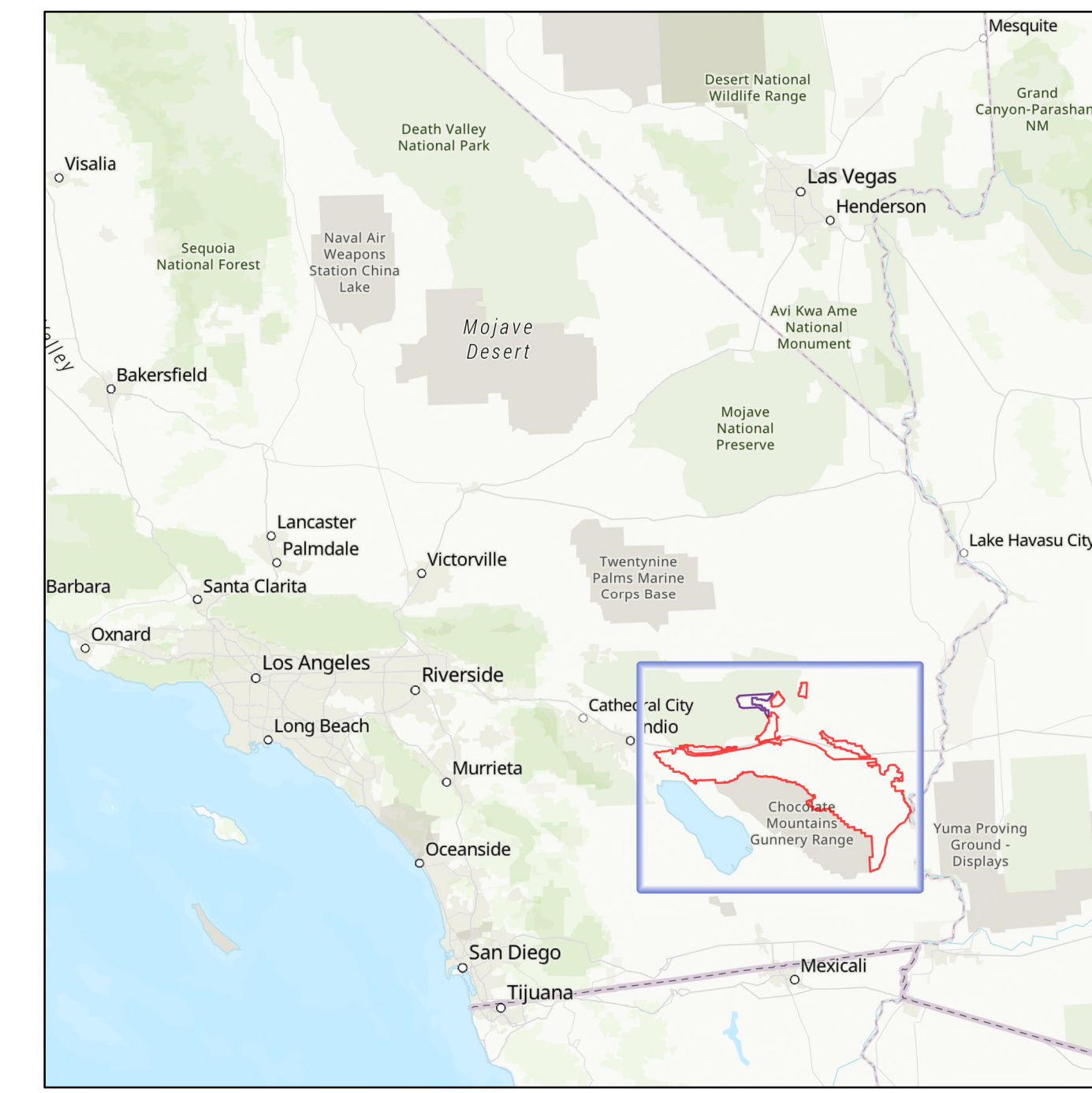


Proposed Chuckwalla National Monument and Joshua Tree National Park Expansion

April 12, 2024

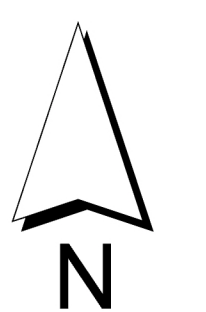
This map prepared at the request of Senator Alex Padilla



- Proposed Chuckwalla National Monument
- Proposed Joshua Tree National Park Expansion
- Development Focus Areas
- National Monument
- Vinagre Wash Special Management Area
- Area of Critical Environmental Concern
- Federal Wilderness Surface Management**
 - Bureau of Land Management
 - National Park Service
 - US Fish and Wildlife Service
- Land Status**
 - Bureau of Land Management
 - National Park Service
 - US Fish and Wildlife Service
 - Bureau of Reclamation
 - Bureau of Indian Affairs
 - Department of Defense
 - State
 - Local Government
 - Private

No warranty is made by the Bureau of Land Management (BLM). The accuracy, reliability, or completeness of these data for individual use or aggregate use with other data is not guaranteed.

Map intended to be plotted at a sheet size of 36" x 48"



0 1 2 4 6 8
Miles

0 2 4 8 12 16
Kilometers

