

**1962
ANNUAL
REPORT**

Washington, D. C.



Memorandum

To: Regional Director, National Capital Region

From: Chief, United States Park Police

Subject: 1962 Annual Report

For many Americans, a visit to the Nation's Capital is a pilgrimage—to relive great moments in history—to observe, first-hand, their Federal Government in action—or simply to tour a beautiful city which also happens to be the hub of national and international affairs. Thus preoccupied, the average visitor is unaware of the extraordinary precautions that have been taken by the United States Park Police to assure his safe and enjoyable visit to any of the 779 federal reservations lying within the Washington Metropolitan Area.

In this report we present a quantitative measure of our protective activity in terms of crime, arrest and accident rates. This is supplemented by descriptive data to indicate the extent and quality of services provided to the public.

With special emphasis placed on orderly growth, the 1962 report reflects the performance achievements and progressive tempo of the United States Park Police, an accomplishment due, primarily, to the earnest efforts of each member of the Force and to the solid support of you, the Regional Director and your staff of the National Capital Region, National Park Service.

Of noteworthy mention is the unprecedented number of simultaneous promotions (25) made at the close of 1962—the greatest number ever effected at one time in the history of the Force. During this same period, several functional changes were initiated resulting in advantageous reassignment of personnel.

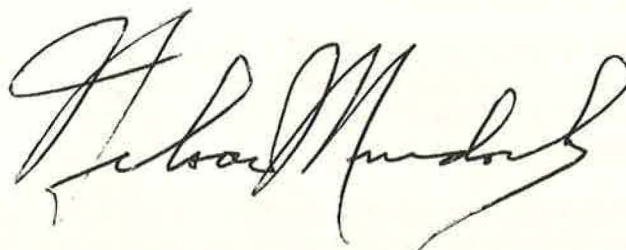
During the latter part of 1962, with the inauguration of the most modern statistical processing facilities available, we made significant strides toward reducing personnel services previously required and increased the availability of vital processed statistics for management's use. This innovation resulted in much greater flexibility in the statistical function and values for both operation and management.

As the United States Park Police progress toward ultimate professionalization, the goal of 1963 is to furnish a higher level of individual performance which in turn will result in a more efficient and effective Force. Programs set in motion during 1962 are calculated to make that goal an accomplished fact.

In line with President Kennedy's program of more effective manpower utilization, additional changes are contemplated in 1963 which will bring about a more efficient and productive level of our police service.

Further reorganization of the Force is in order and will be initiated in the interest of more progressive management to keep pace with a growing Force; and increased responsibilities.

Even as we are achieving our professional goals, as United States Park Police, we are ever mindful of our unique function in the Nation's Capital--to serve the visitor--to provide for his safety and to show him every appropriate courtesy and consideration. This is his city. These are his parks.

A handwritten signature in cursive script, appearing to read "Nelson Murdock". The signature is fluid and somewhat stylized, with a large initial "N" and "M".

Nelson Murdock
Chief of Police

Introduction:

THE UNITED STATES PARK POLICE

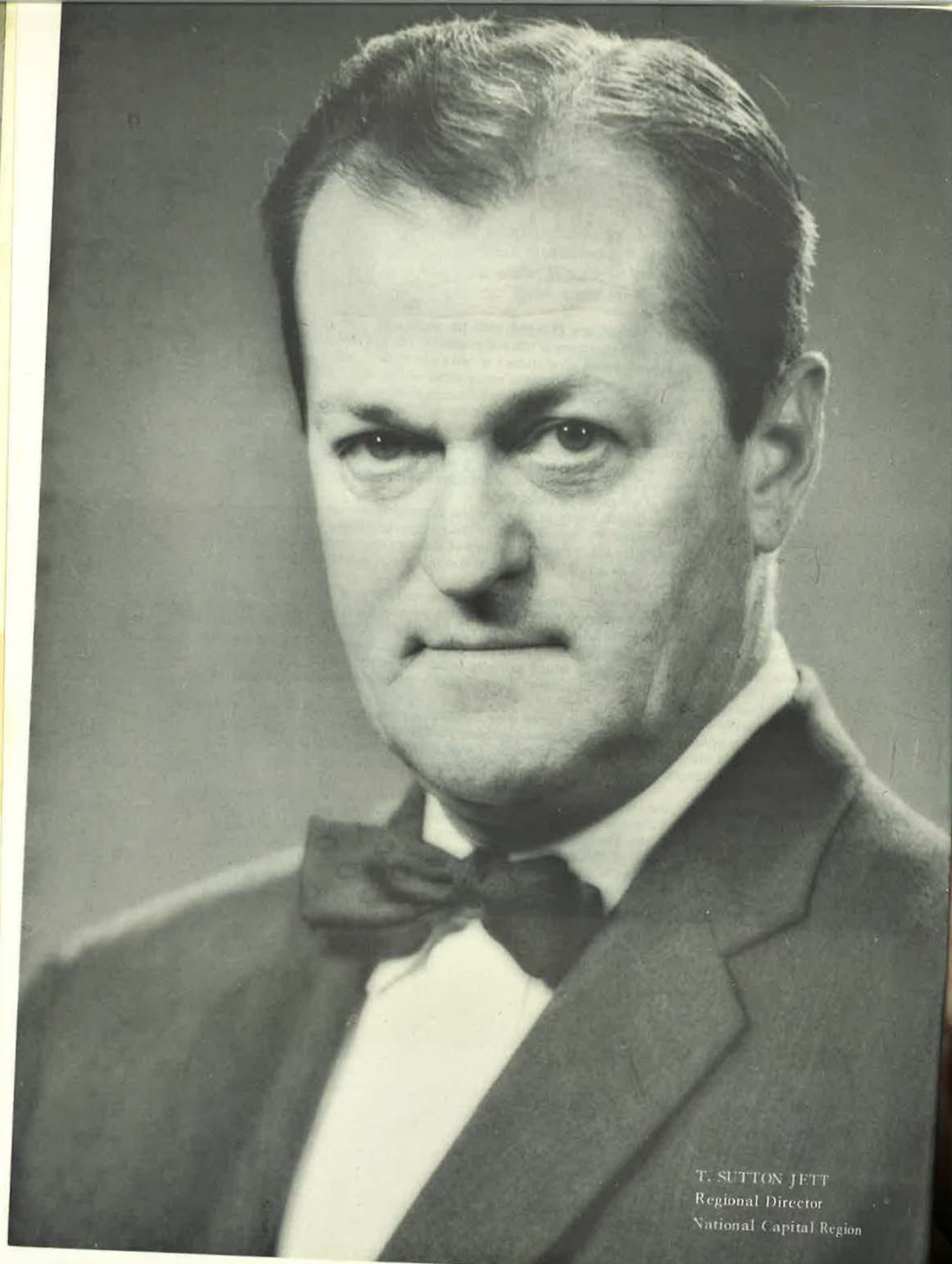
The United States Park Police are charged with the usual police responsibilities for the preservation of peace, the protection of life and property, the prevention and detection of crime, and for the apprehension of violators of laws and regulations. In addition to these primary functions, the Park Police have many other widely diversified obligations which distinguish them apart from their brother State and Municipal law enforcement agencies. By virtue of their jurisdictional purview, the Park Police administer and enforce, not only the laws and statutes of the Federal Government within the geographical confines of the District of Columbia, but also enforce the applicable regulations on certain federally-owned areas in the State of Maryland and the Commonwealth of Virginia. This is a broad responsibility which requires that Force Members be thoroughly conversant with the laws and regulations of all three jurisdictions.

The United States Park Police Force is composed of a group of versatile, highly specialized officers whose duties go beyond that of the responsibility for protection from nefarious crime; they must also act as host to millions of visitors each year to the Nation's Capital, endeavoring to act as guide, information specialist and gentle disciplinarian to the multitudes who need their help.

Some idea of the enormity of the task which confronts the Force can be perceived by considering the many civic events held within the park system each year and for which the Park Police have primary protective responsibility—the Cherry Blossom Festival, the Independence Day Celebration, the President's Cup Regatta, the School Safety Patrol Parade and many others—each of which attracts hundreds of thousands of spectators. During 1962, 2,362 individual assignments to such public functions were made involving a utilization of 12,211 man hours.

Particularly challenging, and one of the most important responsibilities of the Force, consists of supplementing the protection and security and facilitating the safe and expeditious travel of the President of the United States whenever he is enroute to and from the Executive Mansion through the park system. The frequency of these excursions require many man hours.

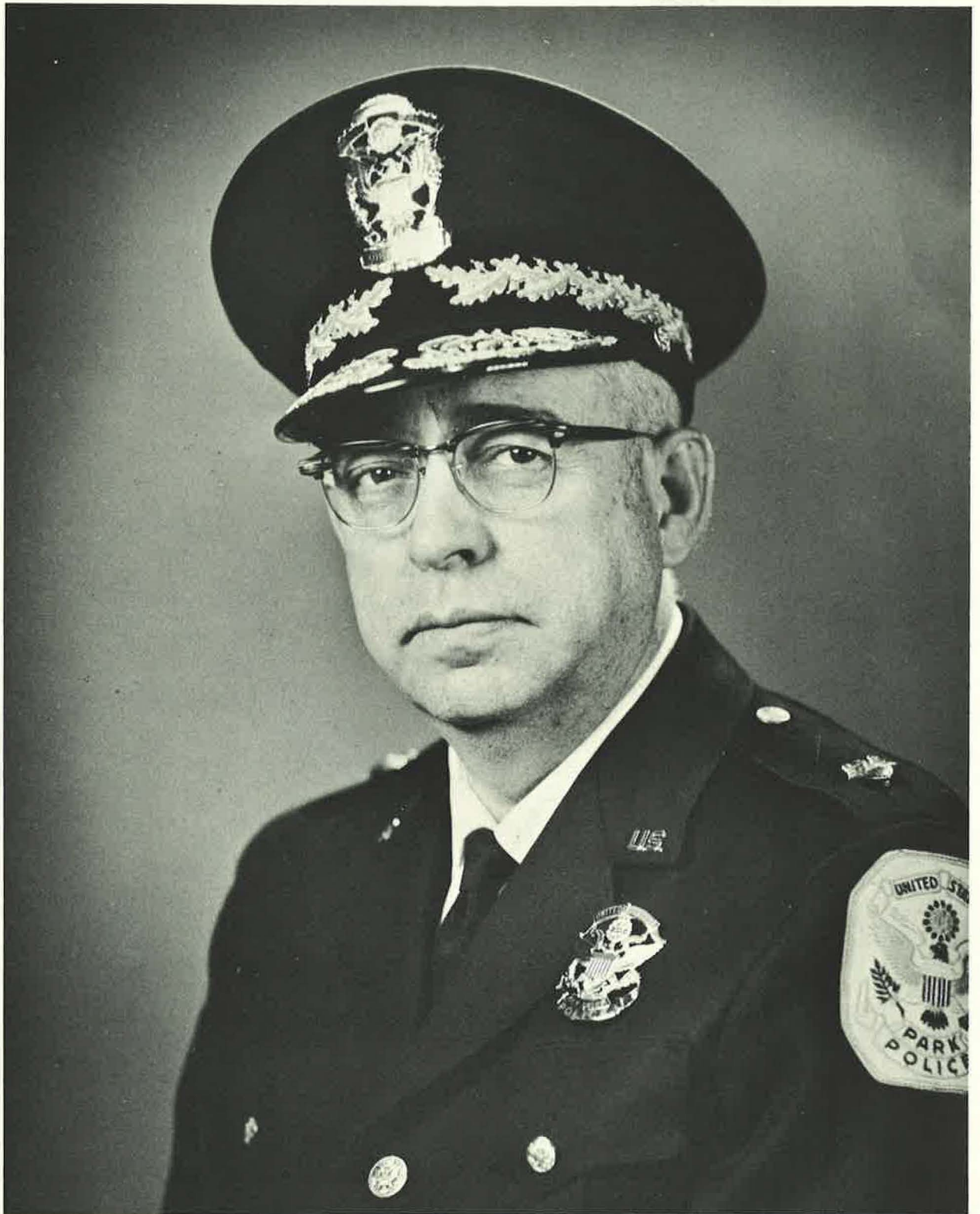
Administratively, the United States Park Police is a division of the National Capital Region of the National Park Service, United States Department of the Interior. The functional organization of the Force, in accordance with established principles of modern police practice, consists of three line divisions augmented by a services division, all under the supervision of the Chief of Police. Line divisions are titled respectively: Patrol, Traffic and Crime Prevention, supported by the Services Division consisting of three branches, namely: Training, Communications and Records, and Transportation and Equipment.



T. SUTTON JETT
Regional Director
National Capital Region



I. J. CASTRO
Assistant Regional Director
National Capital Region



NELSON MURDOCK
Chief
United States Park Police



INSPECTOR WALTER W. LANGE
Executive Officer

PAY SCHEDULE - POLICE PERSONNEL

RANK	STEP 1	STEP 2	STEP 3	STEP 4	STEP 5	STEP 6	STEP 7	STEP 8	STEP 9
Patrolman - Policewoman	\$ 5,160	\$ 5,375	\$ 5,590	\$ 5,848	\$ 6,149	\$ 6,450	\$ 6,751	\$ 7,052	\$ 7,353
Corporal	6,343	6,644	6,945	7,246	---	---	7,547	7,848	8,149
Sergeant	6,880	7,181	7,482	7,783	---	---	8,084	8,385	8,686
Detective Sergeant	6,665	6,880	7,095	7,353	7,654	7,955	8,256	8,557	8,858
Lieutenant	7,525	7,901	8,278	8,654	---	---	9,030	9,406	9,782
Captain	8,600	8,976	9,353	9,729	---	---	10,105	10,481	10,857
Inspector	10,213	10,589	10,965	11,341	---	---	11,718	12,094	12,470
Chief	11,825	12,201	12,578	12,954	---	---	13,330	13,706	14,082

PAY SCHEDULE - CIVILIAN PERSONNEL

POSITION	STEP 1	STEP 2	STEP 3	STEP 4	STEP 5	STEP 6	STEP 7
Administrative Assistant Grade 12-(1)	\$ 9,475	\$ 9,790	\$10,105	\$10,420	\$10,735	\$11,050	\$11,365
Clerk Typist Grade 5-(1)	4,565	4,725	4,885	5,045	5,205	5,365	5,525
Switchboard Operator Grade 4-(4)	4,110	4,225	4,390	4,530	4,670	4,810	4,950
Caretaker (1)	\$2.38 per hour						
Laborer (2)	\$2.22 per hour						

ASSIGNMENT OF PERSONNEL BY DIVISIONS

December 31, 1962		
ADMINISTRATIVE DIVISION	TOTAL PERSONNEL	SERVICES DIVISION
14 POLICE - 2 CIVILIANS	219 POLICE - 11 CIVILIANS	53 POLICE - 7 CIVILIANS
1 - Chief 1 - Deputy Chief 1 - Inspector 1 - Captain 4 - Lieutenants 2 - Corporals 4 - Privates (1 motorcycle mounted) 2 - Civilians	CRIME PREVENTION DIVISION 16 POLICE - 0 CIVILIANS 1 - Lieutenant (Commander) 5 - Detective Sergeants 9 - Plainclothesmen 1 - Plainclotheswoman	1 - Lieutenant (Commander) Training Unit 1 - Lieutenant (Asst. to Comdr. and OIC of Training) 2 - Sergeants 1 - Plainclothesman 16 - Privates (13 recruits) 1 - Policewoman Communications and Records Unit 1 - Sergeants (OIC) 2 - Corporals 2 - Desk Sergeants 18 - Privates (3 technicians) 5 - Civilians
PATROL DIVISION 80 POLICE - 2 CIVILIANS 1 - Lieutenant (Commander) 8 - Sergeants (1 horse mounted) 6 - Corporals (1 horse mounted) 65 - Privates (16 horse mounted and motorcycle mounted) 2 - Civilians	TRAFFIC DIVISION 56 POLICE - 0 CIVILIANS 1 - Lieutenant (Commander) 6 - Sergeants (4 motorcycle mounted) 5 - Corporals (2 motorcycle mounted) 43 - Privates (13 motorcycle mounted and 1 technician) 1 - Policewoman	Transportation and Equipment Unit 3 - Sergeants (1 OIC or T & E) 5 - Privates 2 - Civilians

UNITED STATES PARK POLICE
CONSOLIDATED ANNUAL REPORT
 1962

DISTRIBUTION OF PERSONNEL

	NUMERICAL STRENGTH		AVERAGE DAILY ABSENCE		PERCENT DAILY ABSENCE		AVERAGE DAILY TEMPORARY DETAILS		AVERAGE EFFECTIVE STRENGTH	
	1962	1961	1962	1961	1962	1961	1962	1961	1962	1961
Total personnel	206.7	195.0	73.5	69.8	36%	36%	5.8	4.2	127.4	121.4
Administration Division	12.5	13.8	4.4	4.3	35%	31%	2.0	0.9	6.1	8.9
Communications & Records Unit	25.2	25.0	9.2	8.7	37%	35%	1.3	0.8	14.7	15.4
Patrol Division	74.7	67.8	28.0	25.9	37%	38%	1.3	0.5	45.4	41.6
Crime Prevention Division	10.7	6.9	4.0	2.1	37%	30%	0	0	6.7	4.8
Traffic Division	62.2	59.9	21.7	22.9	35%	38%	0.8	1.6	39.7	35.0
Transportation & Equipment Unit	7.3	6.3	2.3	1.7	32%	27%	0.2	0.1	4.8	4.7
Training Unit	14.0	15.3	3.5	4.2	25%	27%	0	0.3	10.5	11.2
First relief	21.7	22.8	7.3	7.4	34%	32%	0	0	14.4	14.1
Second relief	135.6	125.2	46.9	44.1	35%	35%	5.8	4.2	82.9	78.9
Third relief	49.4	46.8	19.2	18.4	39%	39%	0	0	30.2	28.4

CHANGES IN PERSONNEL

Present for duty beginning of 1962	197
Recruited during 1962	29
Reinstated during 1962	3
Total to account for	229
Separations from the service:	
Voluntary resignation	4
Retirement on pension	6
Resigned with charges pending	
Dropped during probation	
Dismissed for cause	
Killed in line of duty	
Deceased	
Total separations	10
Present for duty at end of 1962	219

DAILY AVERAGE PATROL STRENGTH

	1962	1961
Total number of patrolmen	197.9	186.1
Less permanent assignments (public offices, clerical, chauffeurs, etc.)	49.3	47.7
Less details to special squads or bureaus (traffic, vice, park, etc.)	10.7	6.9
Average daily absences of patrolmen assigned to patrol duty owing to:		
Vacation, suspension, rest days, etc.	52.1	41.7
Sick and injured	7.0	6.0
Temporary details	5.8	4.4
Total average daily absences	64.9	52.1
Available for patrol duty	73.0	79.4

1962 ANNUAL REPORT

JANUARY 1, THROUGH DECEMBER 31, 1962

	1961	1962	INCREASE	DECREASE
TOTAL ALL ARREST	25,213	26,687	1,474	0
Adults arrested	24,972	26,233	1,261	0
Juveniles apprehended	241	454	213	0
TOTAL ARREST FOR MAJOR OFFENSES	95	116	21	0
Adults arrested	63	63	0	0
Juveniles apprehended	32	53	21	0
TOTAL MAJOR OFFENSES REPORTED	445	449	4	0
TOTAL MAJOR OFFENSES SOLVED	101	100	0	1
AUTOMOBILES STOLEN	49	36	0	13
AUTOMOBILES RECOVERED	48	35	0	13
AUTOMOBILES RECOVERED FOR OTHER JURISDICTIONS	72	65	0	7
TOTAL TRAFFIC ACCIDENTS	1,708	1,921	213	0
Fatal accidents	6	9	3	0
Injury accidents	308	392	84	0
Property damage only accidents	1,394	1,520	126	0
TOTAL TRAFFIC DEATHS	7	12	5	0
Pedestrian deaths	1	4	3	0
TOTAL TRAFFIC INJURIES	446	581	135	0
Pedestrian injuries	17	20	3	0
PROPERTY STOLEN	\$ 24,566.76	\$ 22,518.10	0	\$ 2,048.66
PROPERTY RECOVERED	\$ 2,388.76	\$ 2,605.55	\$ 216.79	\$ 0
Percent recovered	10%	12%	2%	0
RECOVERIES FOR OTHER JURISDICTIONS	\$ 0	\$ 196.50	\$ 196.50	\$ 0
TOTAL FINES AND FORFEITURES	\$153,478.10	\$147,056.00	\$ 0	\$ 6,422.10
District of Columbia	\$ 72,219.00	\$ 55,029.00	\$ 0	\$17,190.00
Maryland	\$ 68,295.00	\$ 78,188.00	\$ 9,893.00	\$ 0
Virginia	\$ 12,964.10	\$ 13,839.00	\$ 874.90	\$ 0

ANALYSIS OF PERSONS CHARGED

CLASSIFICATION OF OFFENSES	Released by police (no formal charge)	PERSONS CHARGED 1962			FOUND GUILTY 1962		PERCENT FOUND GUILTY	
		Arrested	Summoned or notified	Total	Of offense charged	Of lesser offense	1962	1961
PART I CLASSES								
1. Criminal homicide: (a) Murder and nonnegligent manslaughter	0	0	0	0	0	0		
(b) Manslaughter by negligence	0	0	0	0	0	0		100%
2. Forcible rape	0	3	0	3	1	0	33%	0%
3. Robbery	0	16	0	16	2	2	12%	0%
4. Aggravated assault	0	11	0	11	3	0	27%	38%
5. Burglary--breaking and/or entering	0	1	0	1	0	0	0%	0%
6. Larceny--theft (except auto theft): (a) \$50. and over in value	0	4	0	4	0	0	0%	100%
(b) Under \$50. in value	0	21	0	21	11	0	52%	55%
7. Auto theft	0	7	0	7	3	0	43%	87%
Total, Part I Classes	0	63	0	63	20	2	32%	62%
PART II CLASSES								
8. Other assaults	0	19	0	19	7	0	37%	60%
9. Forgery and counterfeiting	0	0	0	0	0	0		
10. Embezzlement and fraud	0	3	0	3	1	0	33%	
11. Stolen property--buying receiving, possessing	0	1	0	1	1	0	100%	100%
12. Weapons--carrying, possessing, etc.	0	19	0	19	10	0	53%	88%
13. Prostitution and commercialized vice	0	0	0	0	0	0		
14. Sex offenses (except 2 and 13)	0	19	0	19	11	0	58%	86%
15. Offenses against the family and children	0	0	0	0	0	0		
16. Narcotic drug laws	0	0	0	0	0	0		
17. Liquor laws	0	60	0	60	60	0	100%	100%
18. Drunkenness	0	1,784	0	1,784	1,774	0	99%	99%
19. Disorderly conduct	0	188	0	188	175	0	93%	93%
20. Vagrancy	0	5	0	5	5	0	100%	100%
21. Gambling	0	1	0	1	1	0	100%	
22. Driving while intoxicated	0	47	0	47	24	0	51%	75%
23. Violation of road and driving laws	0	150	7,542	7,692	7,463	0	97%	93%
24. Parking violations	0	11	14,885	14,896	14,643	0	98%	78%
25. Traffic and motor vehicle laws (except 22-24)	0	57	1,096	1,153	1,050	0	91%	93%
26. All other offenses	0	276	0	276	247	0	89%	85%
27. Suspicion or held for investigation	7	7	0	7	0	0	0%	0%
Total, Part II Classes	7	2,647	23,523	26,170	25,472	0	97%	96%
GRAND TOTAL	7	2,710	23,523	26,233	25,492	2	97%	95%

**PATROL
DIVISION**

No KIDS..... NO SKATING TODAY!!!



Lieutenant Alfred D. Beye
Commander of Patrol Division



PATROL DIVISION

The United States Park Police Force has protective responsibility for a total area of Park lands as large as the total area of the District of Columbia. Patrolling some 39,500 acres of parkland would not seem such a staggering problem were it not for the fact that these acres are scattered throughout an entire city and its suburbs and extend into two states. The terrain is of such character as to necessitate numerous methods of traversing our jurisdictional province. To accomplish this difficult function, the Patrol Division utilizes the services of foot, motorcycle, cruiser, jeep, and horse mounted patrols.

It is the Patrol Division, largest of the three line divisions, which performs patrol duties running the gamut from simple misdemeanors to serious crimes. It is called upon to investigate a wide range of complaints emanating from any of the 779 federal parks and reservations, and on special occasions, is required to provide protection at civic events attended by thousands of spectators.

Patrol Division duties are further diversified by the utilization of the Horse Mounted Patrol for specialized patrol of wooded areas and for participation in parades and ceremonies. Assignment to the Horse Mounted Patrol is a highly coveted honor and the men are carefully selected, specially trained and are possessing of the necessary qualities of fine horsemanship, knowledge of animal husbandry and a keen sense of patience and understanding of their high spirited steeds. Their appearance at public festivities not only adds to the interest of the occasion, but their military bearing and the lively actions of their mounts add a colorful touch

to such events and provide an opportunity to display to the public the effective force that is available for their protection and service should it be needed.

Attached to the Horse Mounted Patrol, and a valuable asset to them, is the Service Dog Patrol, whose basic mission it is to "track and hold" an offender of the law for subsequent apprehension and custody. They are also frequently utilized for the humanitarian purpose of tracking and locating children lost in the thickly wooded areas of the park system. In taking advantage of the loyalty and keen senses of these fine animals, it has been possible to prevent many crimes of violence, reunite lost children with their distraught parents and to apprehend many offenders who would have made good their escape to continue their criminal activities elsewhere were it not for the work of this highly trained adjunct to the Force.

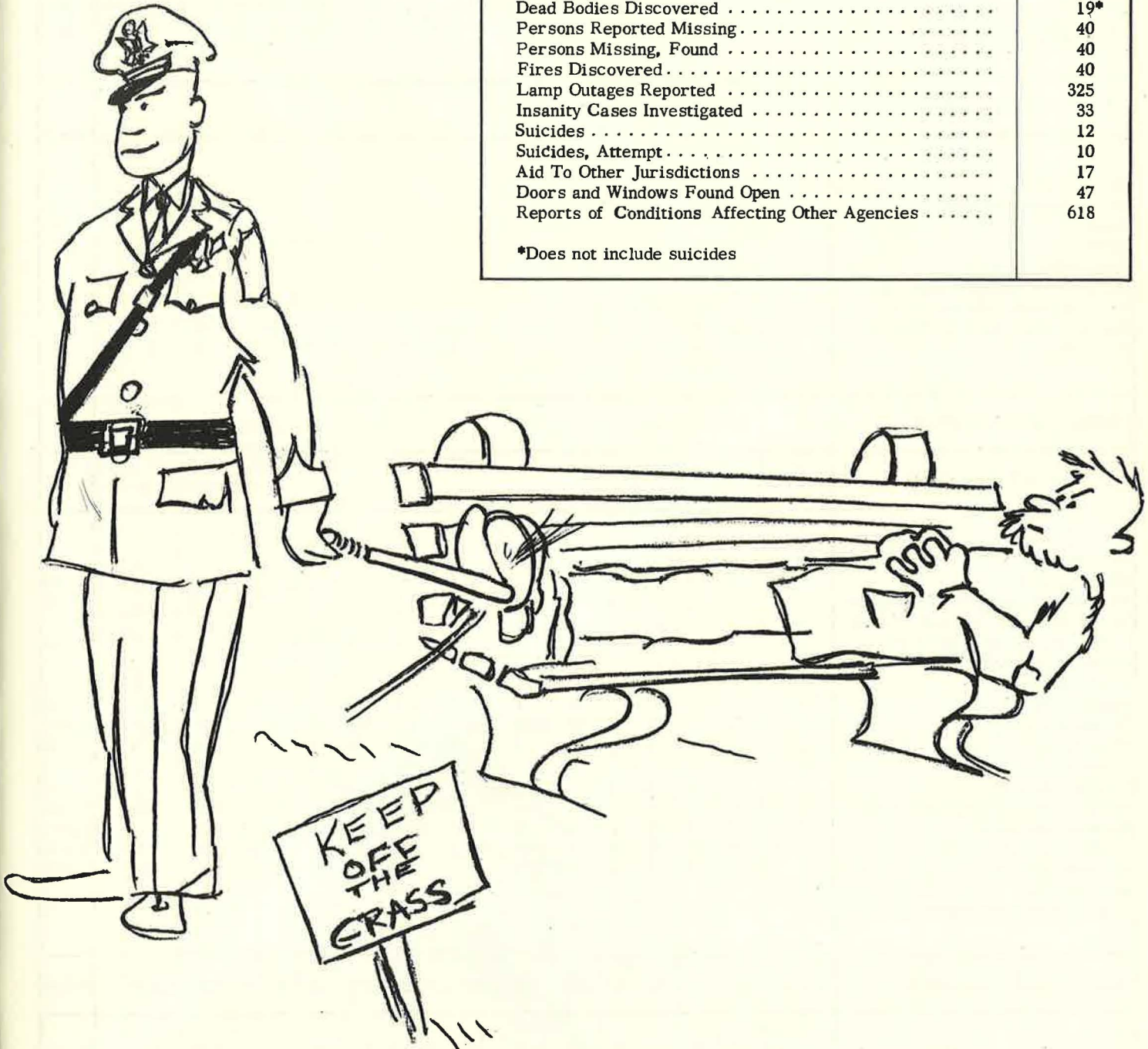
Effective use of the Horse Mounted Patrol is made at public events where large peaceful crowds are gathered. However, should the need arise, both the Horse Mounted and Service Dog Patrols can be brought into speedy enforcement service and are most adept at controlling and dispersing unruly groups, often obviating the necessity for the employment of more forceful measures to maintain peace and order.

Progression in operational functions of the Patrol Division during the past year has been attributed largely to the competence of personnel, the training they receive, through in-service and off-duty college attendance, and especially, the 11% increase in manpower strength which made it possible to augment and intensify patrols.

SUMMARY OF ROUTINE FUNCTIONS AND SPECIAL ACTIVITIES

Complaints Received	2,967
Criminal	550
Non-Criminal	2,417
Number of Cases Booked at Park Police Headquarters ..	12,246
Vehicles impounded	991
Vehicles released	950
Public Functions Handled	443
Motorcycle and Cruiser Escorts Furnished	171
Presidential Activities	18
Injuries Reported	2,033
Dead Bodies Discovered	19*
Persons Reported Missing	40
Persons Missing, Found	40
Fires Discovered	40
Lamp Outages Reported	325
Insanity Cases Investigated	33
Suicides	12
Suicides, Attempt	10
Aid To Other Jurisdictions	17
Doors and Windows Found Open	47
Reports of Conditions Affecting Other Agencies	618

*Does not include suicides



ADULT ARREST BY DISPOSITION

CLASSIFICATION OF OFFENSES	DISPOSITION															TOTAL			
	RELEASED BY POLICE	TRAFFIC SCHOOL	NO PAPERS	NOLLE PROSSED	DISMISSED BY COURTS	NOT GUILTY	PERSONAL BOND	SUSPENDED SENTENCE	PROBATION	FINE	FORFEITURE	MENTAL INSTITUTION	MILITARY AUTHORITIES	OTHER JURISDICTIONS	PENDING		JAIL	PENITENTIARY	
PART I CLASSES																			
Murder																			
Negligent manslaughter																			
Rape			1												2		3		
Robbery			1	4											10	1	16		
Aggravated assault			5											1	4	1	11		
Burglary, breaking & entering			1														1		
Larceny, theft \$100 and over				1	1										2		4		
Larceny, theft under \$100			4	2				1				1	1		10	2	21		
Auto theft				1											5	1	7		
TOTAL PART I CLASSES			12	8	1			1				1	1	1	33	5	63		
PART II CLASSES																			
Gambling																	1	1	
Other assaults			3	3					1								11	1	
Weapons, carrying, possessing, etc.			2	1		1		4	1	3	1				6		19		
Sex offenses (except rape, prostitution, and commercial vice)	1		1					1		1	3					10	2	19	
Stolen property, buying, receiving, possessing																	1	1	
Liquor laws	1						4	1		4	19					5	26	60	
Drunkenness			2		1	3	90	106	5	15	296	5	7		85	1,169	1,784		
Disorderly			1	1	5	2	1	6		10	64	1	3	1	14	79	188		
Vagrancy												1					4	5	
Driving while intoxicated			1	1	1	1		2		6	2					31	1	47	
Violation of road and driving laws		13	36	36	33	63	4	170	74	1,091	5,923		9	2	208	30	7,692		
Parking violations			378	2	3	4	1	20	4	63	14,392				1	26	14,894		
Traffic and motor laws		1	31	21	17	19	1	100	22	192	656				1	2	84	1,155	
All other offenses			2	2	8	2	2	9	2	8	187	17			2	18	17	276	
Investigation	7																	7	3
Embezzlement and fraud												1				2		3	
TOTAL PART II CLASSES	9	14	457	67	68	95	103	419	109	1,393	21,544	24	23	6	500	1,339		26,170	
GRAND TOTAL	9	14	469	75	69	95	103	420	109	1,393	21,544	25	24	7	533	1,344		26,233	

ARRESTS - 1962

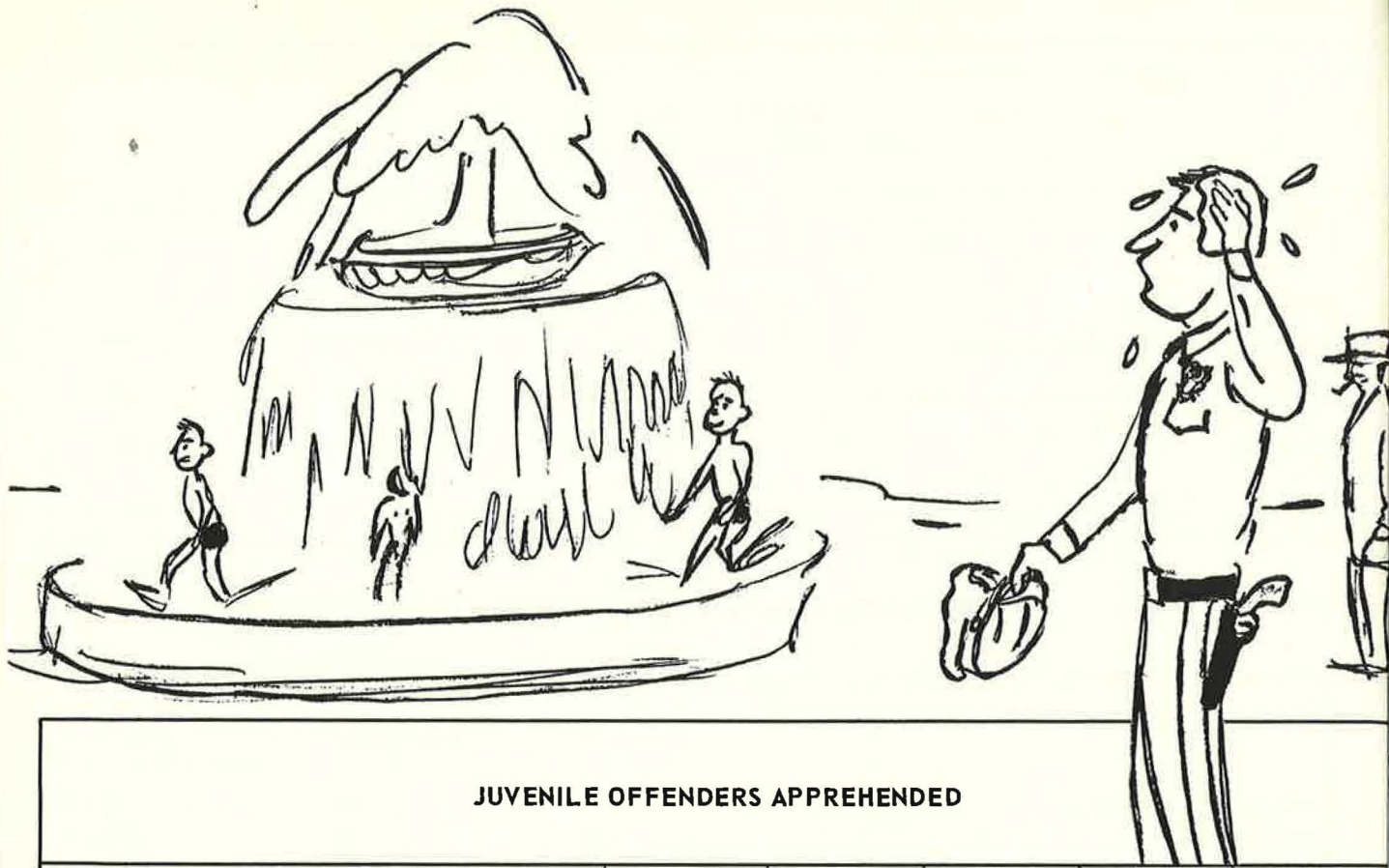
	1961	1962
Total All Arrests (Including Juveniles)	25,213	26,687
Deduct: Major Type (Including Juveniles)	95	116
BALANCE	25,118	26,571

BREAKDOWN: Arrest for Less Serious Offenses

	ADULTS	JUVENILES	TOTAL
Assaults (Except Aggravated)	19	13	32
Disorderly	188	133	321
Drunkenness	1,784	16	1,800
Driving While Intoxicated	47	0	47
Embezzlement and Fraud	3	0	3
Fugative From Correctional Institution	0	0	0
Fugative From Parents	0	8	8
Gambling	1	0	1
Liquor Laws	60	0	60
Sex Offenses (Except Rape)	19	2	21
Stolen Property, Possession of	1	0	1
Taking Property Without Right	0	46	46
Tampering With Auto	0	10	10
Traffic Violations	23,741	35	23,776*
Trespassing	0	0	0
Vagrancy	5	0	5
Vandalism	0	19	19
Weapons, Carrying and Possession	19	12	31
All Other Offenses	276	103	379
Investigation	7	4	11
TOTAL	26,170	401	26,571



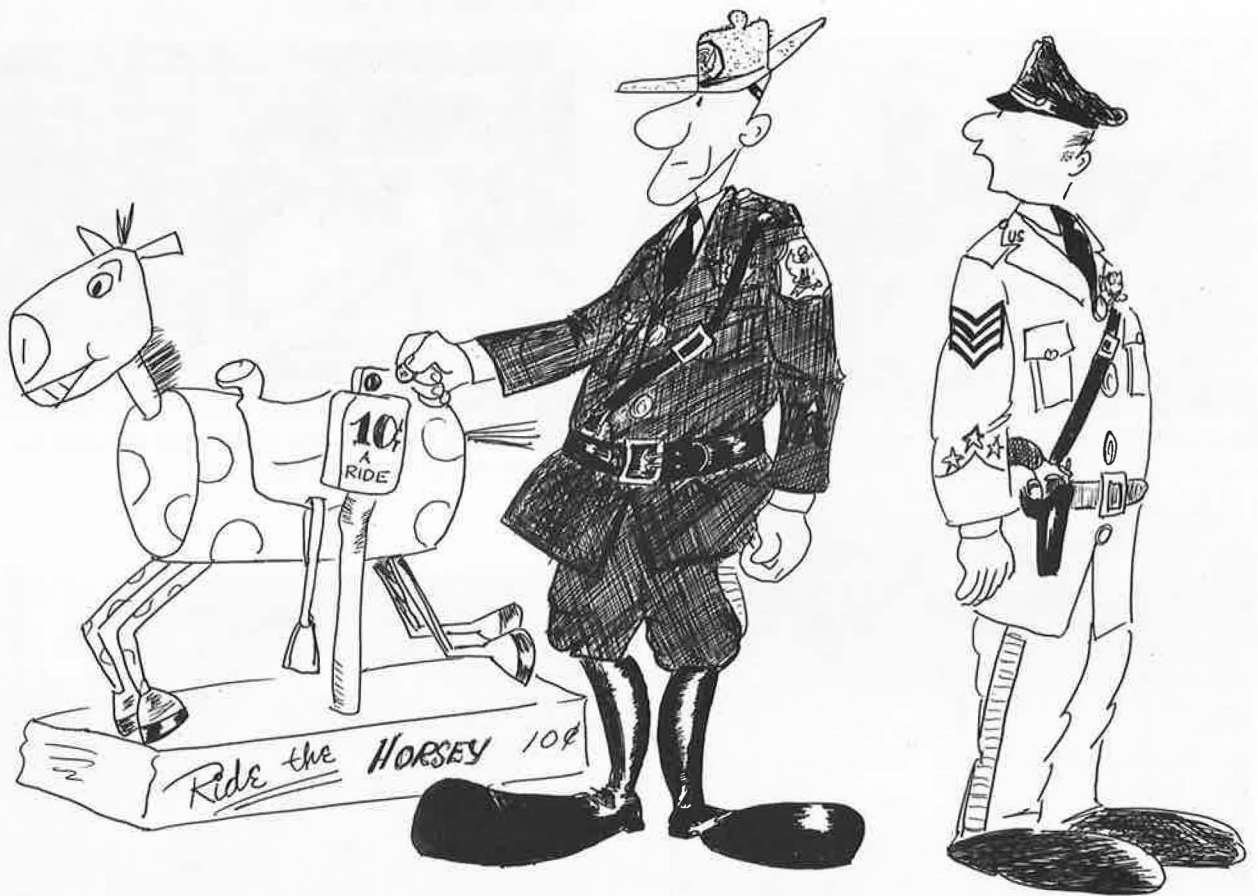
* This figure reflects combined total of arrests by all divisions.



JUVENILE OFFENDERS APPREHENDED

OFFENSES	1958	1959	1960	1961	1962
*Arson	0	0	0	0	0
*Aggravated Assault	1	0	6	3	8
Destroying Government Property	20	8	9	0	0
Destroying Private or Movable Property	0	6	0	0	5
Disorderly Conduct	27	46	42	52	133
Drunkenness	3	4	1	0	16
Fugitive From Correctional Institution	37	30	17	2	0
Fugitive From Parents	40	31	5	4	8
Gambling	0	5	0	0	0
*Housebreaking	0	3	27	16	8
Investigation	5	0	0	0	4
Miscellaneous Nuisances	28	82	7	8	8
Narcotic Drug Laws	0	0	0	0	0
Assault (Except Aggravated)	1	0	1	7	13
Sex Offenses	0	2	3	4	2
Stolen Property, Receiving	0	0	2	0	0
*Robbery	1	5	18	4	33
*Taking Property Without Right	45	26	23	35	46
Tampering With Auto	6	12	7	15	10
Traffic Violations	124	82	55	43	35
*Unauthorized Use of Auto	17	26	23	9	4
Truancy From School	19	29	45	30	62
Vandalism	15	40	20	4	19
Weapons-Carrying, Possession, Discharging	8	25	10	2	12
All Other Offenses	12	8	26	3	28
*Indicates More Serious Offenses					
TOTALS	409	470	347	241	454

Horse And Dog Patrol





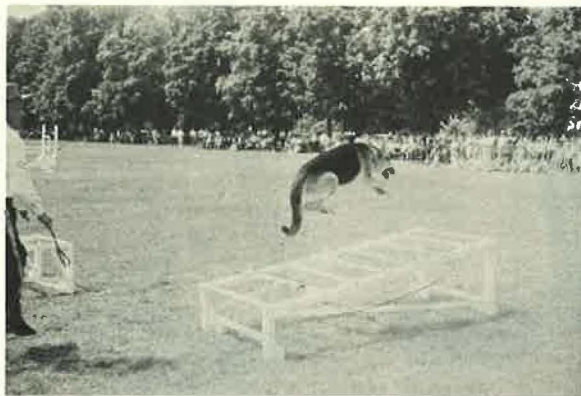
Sergeant Jesse N. Pickeral, Jr.
Officer-In-Charge
Horse Mounted Patrol



A Winter Patrol



Finding Lost Parents—One of the many services performed by our Horse Mounted Patrol.



Dog Training Exhibition



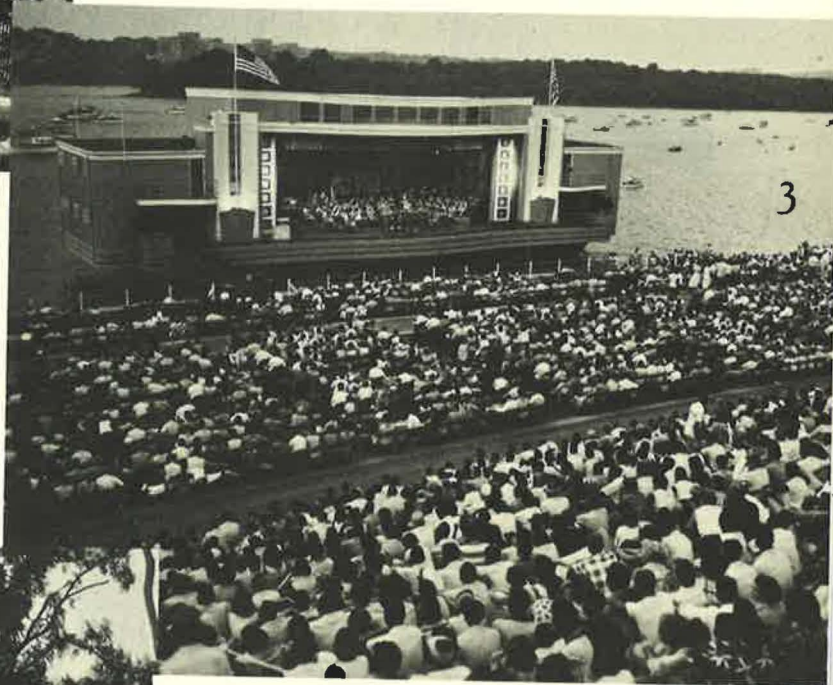
1

A FEW OF OUR MANY SPECIAL EVENTS

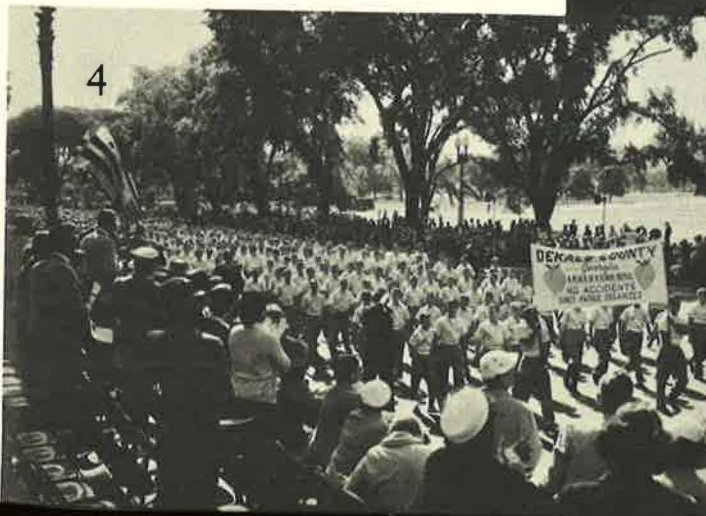
1. July 4th Independence Day Celebration at the Washington Monument Grounds
2. The President's Cup Regatta at Hains Point
3. Watergate Concert on the Potomac near Arlington Memorial Bridge
4. Annual School Boy Patrol Parade



2



3



4

TRAFFIC DIVISION



TRAFFIC DIVISION

Recent years have witnessed a great influx in the population of Metropolitan Washington and an ever greater annual usage of the parks and memorials. These increases have been accompanied by a corresponding enlargement in the complexity of area traffic problems. It is with these ever mounting numbers of visiting and resident motorists who travel the streets and parkways within the jurisdiction of the United States Park Police, as visitors or daily commuters, that the Traffic Division is primarily concerned. Working in close cooperation with the Traffic Coordinating Committee for the District of Columbia, the Traffic Division is vitally concerned with the "3-E's" of traffic management: Engineering, Education and Enforcement. During the year, the Division worked conscientiously and effectively in planning ways and means of improving traffic control in the park system, of expediting the safe flow of traffic at times and places where congestion was encountered, and in improving the services rendered to the public in accident prevention and investigation.

Statistical research and field studies, initiated with a view to better understanding of the traffic problems of the Force, resulted in constructive recommendations both in traffic engineering and traffic education.

The Traffic Division is composed of a total of 56 officers of which, 19 are motorcyclemen, 29 are cruisermen, 3 are foot patrol, and 5 are assigned to the Traffic office. These officers approach the problems associated with traffic accidents and traffic flow and congestion with tact and skill born of intensified training and experience in their various fields of police duties. Inasmuch as they are in contact with a cross section of humanity including the highest dignitaries and heads of state from all over the world, the resident and the visitor, it is imperative that sound public relations and good judgment be exercised at all times. Therefore, whenever possible, the enforcement action taken is as mild as is expedient in the interest of public relations and necessity.

The Traffic Division is responsible for two very vital duties—the investigation of accidents and the enforcement of traffic regulations. Accidents are critically analyzed in much the same manner as crime, to determine locations and causes. Pin maps, reports, charts, and statistical studies are the tools of the traffic analyst. His experience and knowledge as a police officer are focused on the traffic problems of the roads and parkways within the jurisdictional purview of the Park Police. He assists the Traffic Division in its constant attack on accidents and traffic conflicts.

Speed has long been the number one cause of traffic deaths and personal injuries. "Prevention through enforcement" is the adopted motto of the Traffic Division and with the use of radar, regarded as one of the most effective speed control devices, the Division has endeavored to keep strict control of unsafe speed on our federally owned, heavily traveled parkways.

When preventive measures fail, accidents are often the result. In 1962, 1,921 accidents were investigated by the Park Police. 12 persons lost their lives in 9 of these accidents and 581 more were injured in another 392.



Lieutenant Richard N. Crack
Commander of Traffic Division

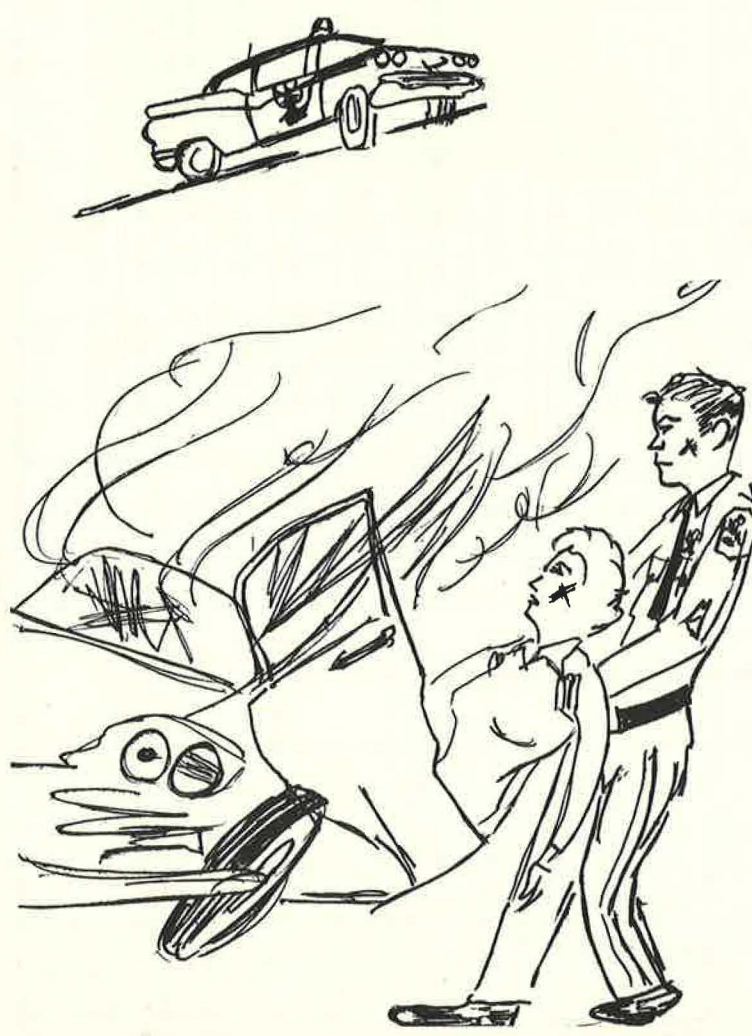
In the field of prevention through education, during 1962, members of the "Force appeared on several local television programs, entitled "Traffic Court'," Again, in the interest of traffic safety, many members of the Division also appeared and lectured before the 1962 Recruit Training School on relevant aspects of traffic enforcement and accident prevention and investigation.

For visiting dignitaries and heads of state, the Traffic Division, in 1962, provided 189 motorcycle escorts not including numerous special escorts required by Presidential activities.

On the less routine and authoritative side of the Traffic Division's accomplishments should be mentioned the riding prowess of the expertly trained Motorcycle Mounted Unit. Each man, hand picked and specially instructed, is an experienced and expert rider able to operate his vehicle at amazingly low speeds and yet maintain perfect balance and line formation. Hence, this impressive Unit is often utilized in parades and other civic functions and performs its duties with great proficiency to the great delight of the thousands of spectators gathered to enjoy the festivities.

GENERAL SUMMARY OF ACCIDENTS AND ENFORCEMENT

CLASSIFICATION	1962
Total Reported Motor-Vehicle Traffic Accidents	1,921
Fatal Accidents	9
Non-Fatal Injury Accidents	392
Property Damage Only Accidents	1,520
Total Motor Vehicle - Pedestrian Accidents	20
Number of Motor Vehicle Traffic Accidents Investigated	1,921
Number of These Investigations Resulting in Arrests	1,136
Persons Arrested in Connection With These Investigations	1,369
Persons Convicted Following Accidents Arrests	1,110
Known Hit-Run Accidents	33
Hit-Run Accidents Cleared	22
Hit-Run Drivers Arrested	11
Arrests for Hazardous Traffic Law Violations	7,630
Convictions for Hazardous Traffic Law Violations	7,072
Number of Convictions Resulting in Penalty Paid	6,759
Pedestrians Convicted For Pedestrian Traffic Violations	35

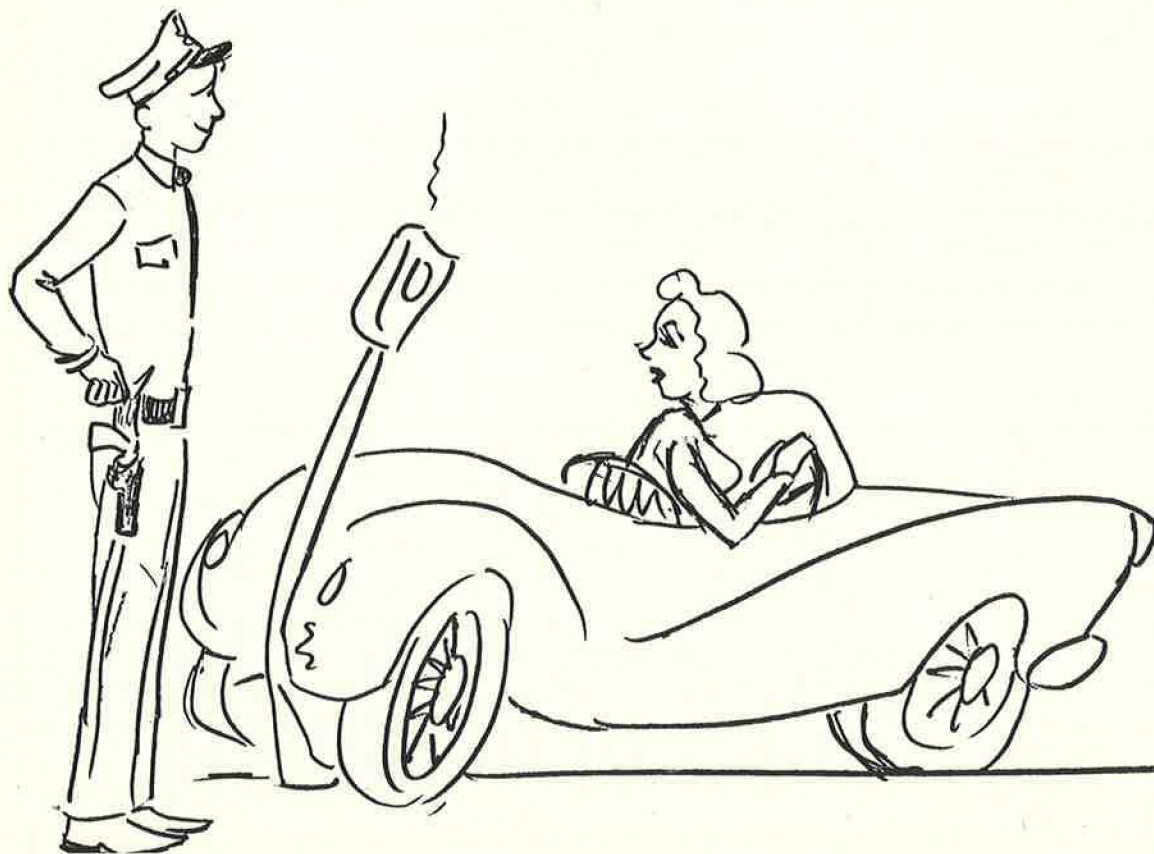


TRAFFIC ARRESTS AND CITATIONS BY LOCATION

TRAFFIC VIOLATIONS	Anacostia Park	Baltimore and Washington Parkway	Chesapeake and Ohio Canal	City Streets	Columbia Island	Constitution Avenue	East Potomac Park	Ellipse	Fort Dupont	Fort Hunt	Fort Washington	George Washington Memorial Parkway	Judiciary Square	Mall Area	Meridian Hill Park	Outlying Reservations	Rock Creek Park	Rock Creek Parkway	Stanton Park	Suitland Parkway	Washington Monument Grounds	West Potomac Park	TOTAL
*Does not include 13,924 parking and miscellaneous violations mailed to Central Violations Bureau.																							
Speed	14	2,508	5	204	48	49	6	0	3	0	5	419	0	2	0	11	33	23	0	762	6	109	4,207
Right of Way, Vehicle	3	42	0	11	1	22	4	4	0	0	0	29	0	11	0	12	7	40	0	45	2	24	257
Right of Way, Pedestrian	0	0	0	1	0	6	0	1	0	0	0	0	0	0	0	1	0	0	0	0	0	2	11
Signal Lights	0	17	5	93	0	107	0	1	0	0	0	10	0	27	0	10	4	3	0	62	8	47	394
Stop Sign	0	43	1	16	0	1	2	0	0	0	0	7	0	7	0	1	2	2	0	6	0	0	88
Improper Turns	0	6	1	20	13	119	0	0	0	0	0	20	0	5	0	2	2	6	0	5	5	73	277
Wrong Side and Overtaking	2	9	0	3	0	2	0	1	0	0	1	3	0	0	0	0	9	7	0	18	0	5	60
Following Too Closely	5	194	0	0	37	71	5	5	0	0	0	11	0	7	0	6	30	22	0	57	12	98	560
Failed to Signal	0	5	0	1	0	0	0	0	0	0	0	0	0	0	0	0	0	0	0	0	0	0	6
Other Driver Behavior	13	341	11	31	25	85	9	15	3	0	9	224	0	20	0	3	47	55	0	159	10	175	1,235
Other Driver Conditions	0	0	0	1	0	0	0	0	0	0	0	4	0	0	0	0	0	0	0	1	0	2	8
Hazardous Pedestrian Behavior	0	0	0	2	0	24	0	0	0	0	0	0	0	0	0	0	0	0	0	0	0	0	26
Driving While Intoxicated	1	14	0	3	0	3	0	0	0	0	0	12	0	0	0	2	3	2	0	3	1	3	47
Bad Brakes	0	1	0	0	0	3	0	0	0	0	0	0	0	0	0	0	0	1	0	1	0	0	6
Other Vehicle and Load Conditions (Unsafe)	0	105	1	15	2	5	2	0	0	0	1	17	0	2	0	2	4	0	0	15	0	3	174
Hit and Run	0	1	0	4	0	0	0	0	0	0	0	1	0	2	0	0	0	1	0	1	0	3	13
Reckless Driving	1	70	1	12	0	0	0	0	0	0	0	36	0	0	0	0	3	3	0	18	1	1	146
Fail to Report Accident	0	0	0	0	0	1	0	0	0	0	0	0	0	0	0	0	1	0	0	0	0	1	3
Parked Overtime	1	0	2	1	14	4	0	13	0	0	0	2	0	16	0	1	1	0	0	0	1	1	57
Parked Wrong Place	1	139	20	3	7	424	1	18	1	1	14	53	2	56	0	7	5	13	0	*10	15	160	950
Parked Wrong Manner	0	0	0	0	0	2	0	2	0	0	0	0	0	5	0	0	0	0	0	0	0	0	9
Vehicle Size, Weight and Registration Violation	3	252	6	47	21	38	12	10	0	0	11	166	0	37	0	13	19	9	0	125	8	47	824
Vehicle Equipment (Not Safety)	0	4	1	4	0	1	0	0	0	0	2	0	0	0	0	0	1	0	0	4	0	0	17
Pedestrian Under Influence	0	3	0	0	0	0	0	0	0	0	0	0	0	0	0	0	0	0	0	0	0	0	3
Miscellaneous	1	313	3	22	5	14	2	1	0	0	4	53	0	13	0	1	9	2	0	20	4	19	486
TOTAL	45	4,067	57	494	173	981	43	71	7	1	47	1,067	2	210	0	72	180	189	0	1,312	73	773	*9,864

TRAFFIC VIOLATIONS RESULTING IN MOTOR VEHICLE ACCIDENTS

CAUSES OF ACCIDENTS	TOTAL		Accidents in The District		Accidents in Maryland		Accidents in Virginia		All Areas
	1962	1961	1962	1961	1962	1961	1962	1961	1962
Full Time and Attention	319	392	181	274	90	76	48	42	17%
Following Vehicle Too Closely	373	269	224	173	102	65	47	31	19%
Right of Way, Pedestrian	11	17	11	14	0	1	0	2	.6%
Right of Way, Vehicle	134	113	85	66	22	17	27	30	7%
Improper Turns	105	109	87	94	9	4	9	11	5%
Emergency Control	150	315	38	114	43	82	69	119	8%
Wrong Side and Overtaking	87	83	54	53	18	19	15	11	4%
Changing Lanes Without Caution	192	143	143	107	27	20	22	16	10%
Disobeying Signal Device	38	36	33	28	0	0	5	8	2%
Disregarding Stop Sign	5	5	4	1	0	2	1	2	.3%
Reckless Driving	41	38	11	5	22	26	8	7	2%
Unsafe Vehicle Conditions	37	18	14	11	18	4	5	3	2%
Driving While Intoxicated	24	12	11	4	9	4	4	4	1%
Excessive Speed	322	94	193	51	75	35	54	8	17%
Backing and Parking Improperly	69	45	41	28	15	11	13	6	4%
Fail to Signal	2	1	2	0	0	1	0	0	.1%
Pedestrian Violations	5	0	3	0	2	0	0	0	.3%
Miscellaneous	7	18	3	7	3	9	1	2	.4%
TOTAL	1,921	1,708	1,138	1,030	455	376	328	302	



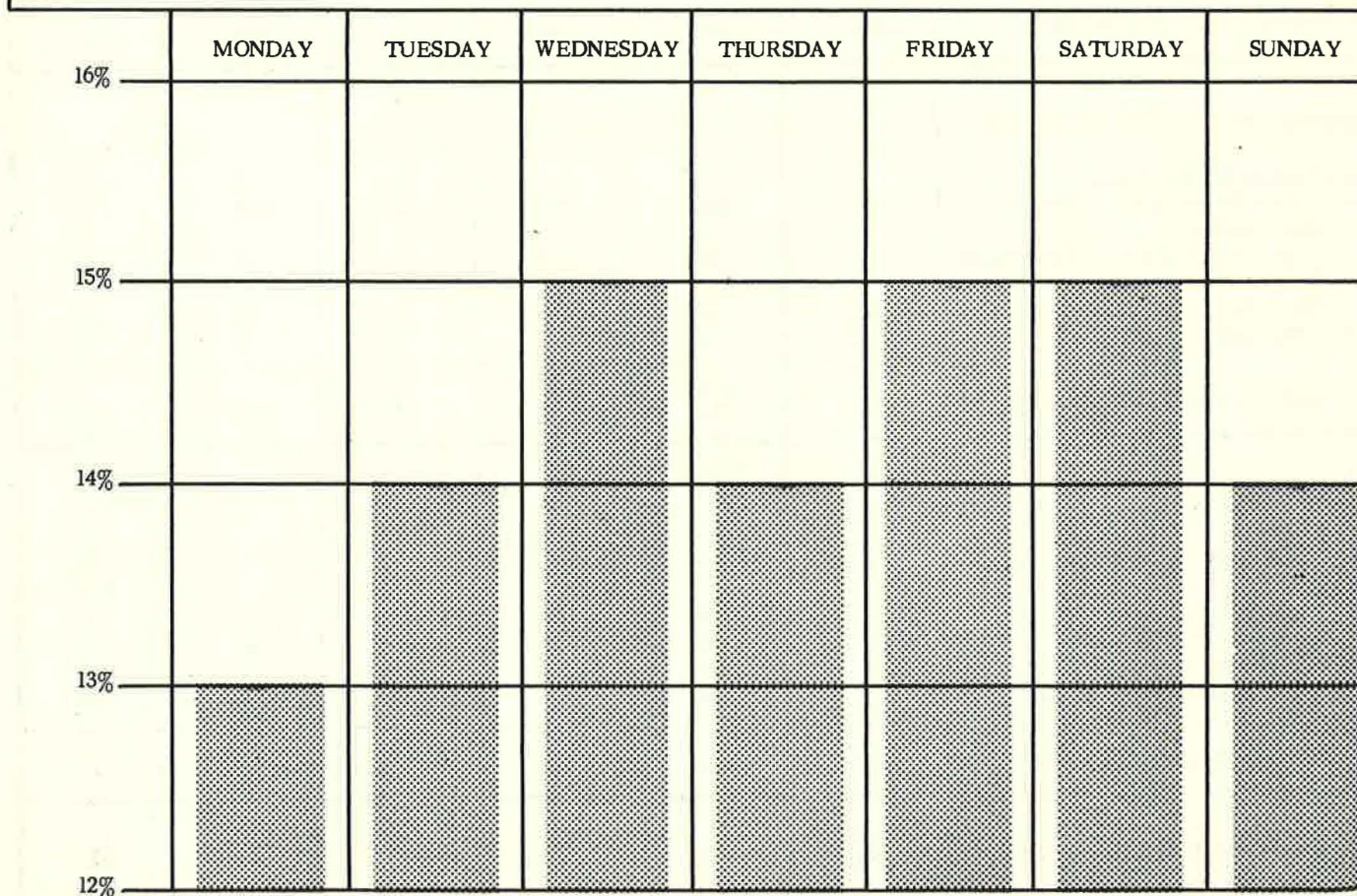
TRAFFIC ACCIDENTS BY LOCATION

	Total	Property Damage Accidents	Personal Injury Accidents	Fatal Accidents	Number Injured	Number Killed
DISTRICT OF COLUMBIA						
Anacostia Park	18	14	4	0	5	0
Baltimore-Washington Parkway	11	6	5	0	10	0
Chesapeake & Ohio Canal	2	1	1	0	1	0
Columbia Island	139	124	15	0	18	0
Constitution Avenue	264	229	35	0	54	0
East Potomac Park	19	15	4	0	5	0
Fort Dupont	0	0	0	0	0	0
Reservations East	10	8	2	0	2	0
Reservations West	10	7	3	0	3	0
Ellipse	19	17	2	0	2	0
Mall Area	49	41	8	0	10	0
Rock Creek Park	103	66	37	0	58	0
Rock Creek Parkway	127	94	33	0	46	0
Suitland Parkway	57	39	17	1	30	1
Washington Monument Grounds	53	46	7	0	8	0
West Potomac Park:						
Memorial Bridge	81	75	6	0	9	0
Lincoln Memorial Circle	90	84	6	0	10	0
Independence Avenue	67	59	8	0	9	0
Ohio Drive	18	14	3	1	6	2
Maine Avenue	1	1	0	0	0	0
TOTAL D. C. ACCIDENTS	1,138	940	196	2	286	3
MARYLAND						
Chesapeake & Ohio Canal	5	4	1	0	2	0
Baltimore-Washington Parkway	377	267	106	4	165	4
Suitland Parkway:						
Branch Avenue-Suitland Overpass	24	18	6	0	9	0
Suitland Overpass-Andrews Air Force Base	46	30	15	1	27	1
Fort Washington	3	2	1	0	2	0
TOTAL MARYLAND ACCIDENTS	455	321	129	5	205	5
VIRGINIA						
George Washington Memorial Parkway:						
Alexandria to 14th St. Bridge	158	130	28	0	42	0
Spout Run and New GWMP	124	94	29	1	35	3
Belle Haven Intersection	22	16	5	1	9	1
Belle Haven to Mount Vernon	24	20	4	0	4	0
TOTAL VIRGINIA ACCIDENTS	328	260	66	2	90	4
GRAND TOTAL ALL AREAS	1,921	1,521	391	9	581	12

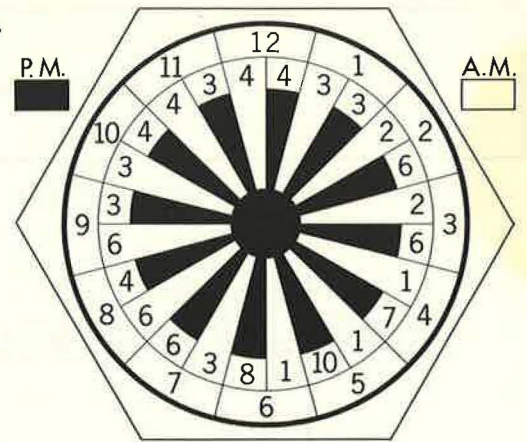
ACCIDENTS BY DAY OF WEEK

Day of Week	District of Columbia	Percent	State of Virginia	Percent	State of Maryland	Percent	Total	Percent
Monday . . .	153	13%	35	10%	56	12%	244	13%
Tuesday . . .	166	15%	48	15%	60	14%	274	14%
Wednesday .	188	16%	49	15%	50	11%	287	15%
Thursday . .	167	15%	48	15%	52	11%	267	14%
Friday	179	16%	52	16%	67	15%	298	15%
Saturday . . .	143	13%	47	14%	93	20%	283	15%
Sunday	142	12%	49	15%	77	17%	268	14%
TOTALS . .	1,138	100%	328	100%	455	100%	1,921	100%

AN AVERAGE OF THE PERCENTS SHOWN ABOVE



ACCIDENT TIME CLOCK
Accidents shown by percent



SUMMARY OF ARRESTS AND CONVICTIONS BY TYPE	Arrests	Convictions	
		Total	With Paid Penalty
GRAND TOTAL ALL TRAFFIC VIOLATIONS	23,788	23,184	22,686
Total Hazardous	7,521	7,224	6,896
1. Total hazardous driver behavior	7,084	6,859	6,573
Speed	4,207	4,163	4,103
Right-of-way, vehicles	257	239	219
Stop-and-go lights	394	383	374
Stop signs	88	86	83
Turns	277	268	254
Wrong side and overtaking	60	55	53
Following	560	487	418
Intention signal	6	3	3
Other driver behavior	1,235	1,175	1,066
2. Hazardous behavior, pedestrian and others	37	37	36
3. Total hazardous driver conditions	61	32	29
Under influence	47	21	19
Other hazardous driver conditions	14	11	10
4. Pedestrian under influence	3	3	2
5. Total other unsafe conditions	174	163	152
Brakes	6	4	4
Other unsafe vehicle and load conditions	168	159	148
6. Total miscellaneous hazardous violations	162	130	104
Evaded responsibility (hit-and-run, etc.)	13	3	2
Reckless driving	146	124	99
Negligent homicide (manslaughter with vehicle)	0	0	0
Failed to report accident	3	3	3
Total Other (non-hazardous) Violations	16,267	15,960	15,790
1. Total parking violations	14,896	14,700	14,676
Overtime parking	5,279	5,279	5,278
Wrong place	9,524	9,329	9,306
Wrong manner	93	92	92
2. Vehicle size, weight, registration violations	853	747	634
3. Vehicle equipment, not safety (muffler, etc.)	17	18	14
4. Miscellaneous	501	495	466

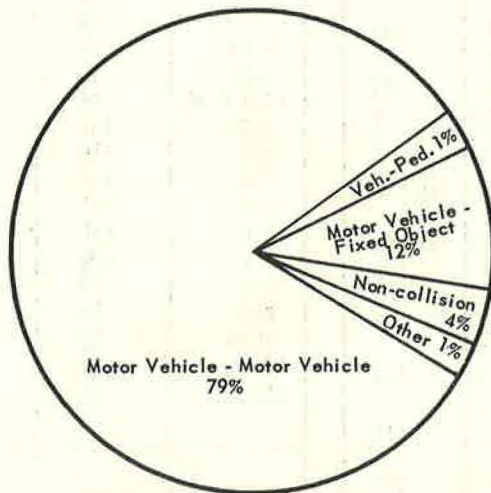
TIME CHART		
Hours	Number of Accidents	Per Cent
12-1 A.M.	65	3%
1-2	45	2%
2-3	39	2%
3-4	25	1%
4-5	22	1%
5-6	15	1%
6-7	66	3%
7-8	123	6%
8-9	119	6%
9-10	54	3%
10-11	70	4%
11-12	74	4%
12-1 P.M.	68	3%
1-2	108	6%
2-3	110	6%
3-4	132	7%
4-5	191	10%
5-6	156	8%
6-7	106	6%
7-8	73	4%
8-9	64	3%
9-10	72	4%
10-11	53	3%
11-12	71	4%
TOTALS	1,921	100%

COMPARISON SUMMARY OF TRAFFIC ACCIDENTS

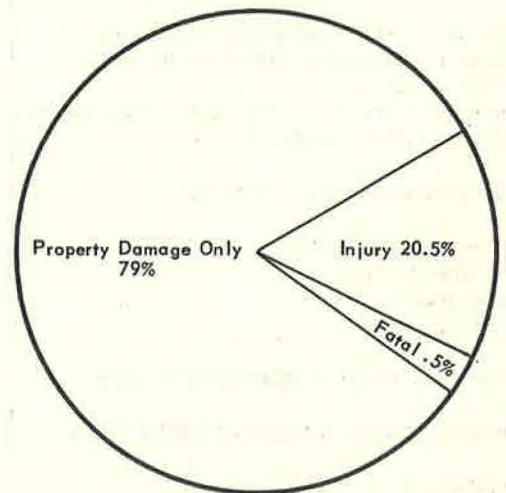
MOTOR VEHICLE ACCIDENTS	1960	1961	1962
Property Damage Only	1,262	1,394	1,520
Injury (Non-Fatal)	288	308	392
Fatal	14	6	9
Totals	1,564	1,708	1,921

TYPE OF ACCIDENT	1960	1961	1962
Motor Vehicle With Motor Vehicle	1,231	1,416	1,538
Motor Vehicle With Pedestrian	74	17	22
Motor Vehicle With Fixed Objects	179	193	292
Non Collision	58	77	65
Other	19	5	4
Totals	1,564	1,708	1,921

TYPE OF ACCIDENT	1960	1961	1962
Persons Killed (Non-Pedestrian)	15	6	8
Pedestrians Killed	2	1	4
Persons Injured (Non-Pedestrian)	269	446	561
Pedestrians Injured	19	17	20
Total Killed	17	7	12
Total Injured	288	463	581



ACCIDENTS BY TYPE AND PERCENT
1962



ACCIDENTS BY DEGREE OF INJURY AND PERCENT
1962

Motorcycle Unit

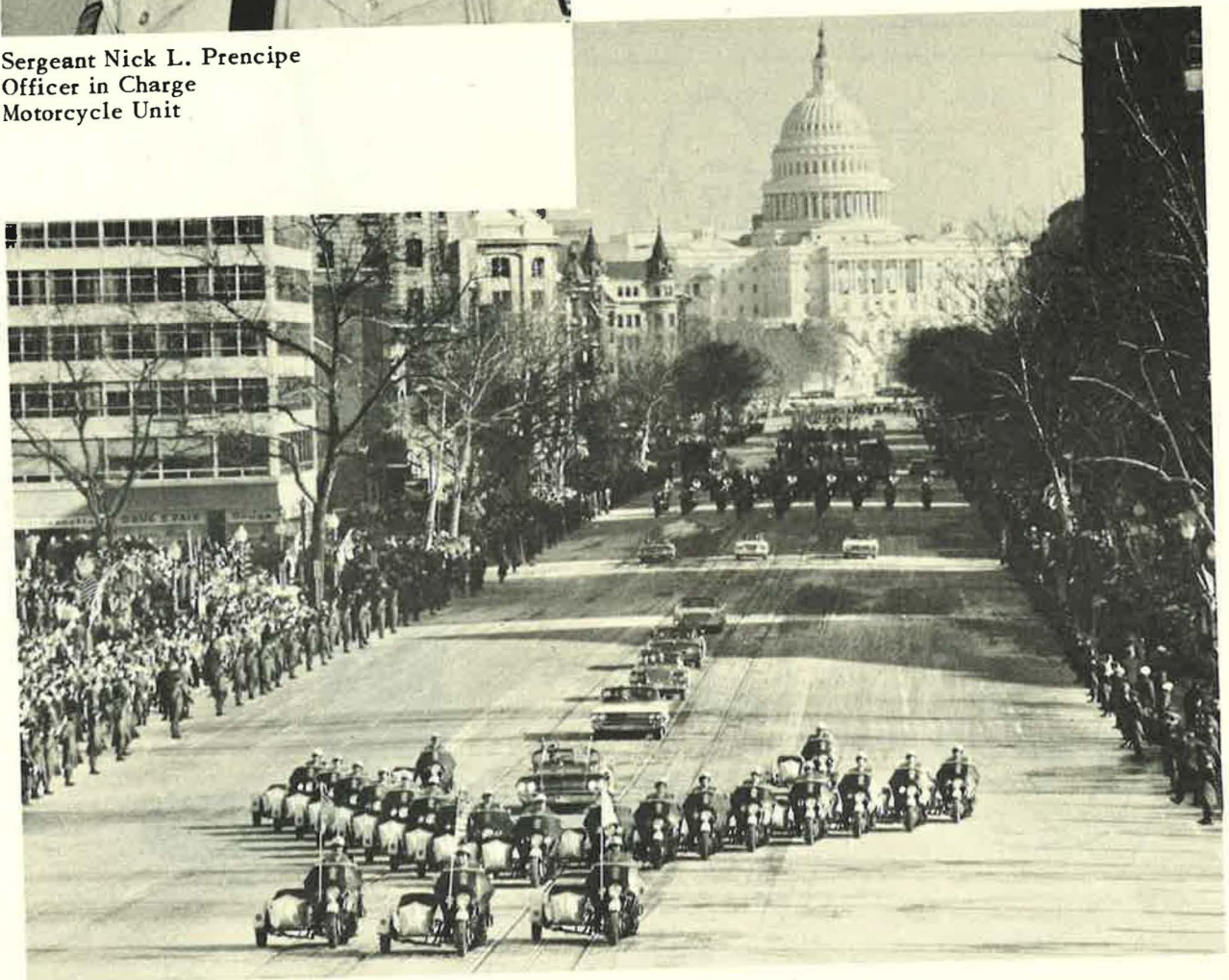




Sergeant Nick L. Prencipe
Officer in Charge
Motorcycle Unit



One of Our Many Parade Details
National Cherry Blossom Festival



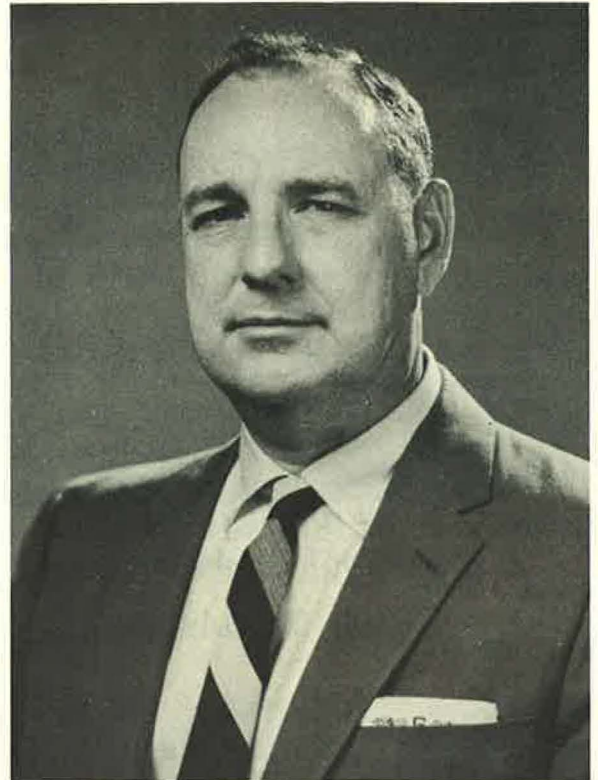
Our Motorcycle "V" Formation on Pennsylvania Avenue

CRIME PREVENTION DIVISION

Yessir found plenty 'o clues
Should solve this one real quick.....
By the way where's our car?



LIEUTENANT WILLIAM W. GUNTER
Commander of Crime Prevention Division



CRIME PREVENTION DIVISION

Working with quiet efficiency—in plain clothes and unmarked cars—the investigators of the Crime Prevention Division are seldom noted by the public they protect. A line division of the United States Park Police, the Division concerns itself chiefly with the prevention of crime, detection of criminals and protection of visitors and their property while they are guests in the Capital City.

During 1962, a number of functional changes were effected which increased the efficiency of the Division and of the Force. A mild form of specialization, within the Division, now permits the investigator to concentrate his time and energies on the investigation of a particular type of criminal activity thus making it possible for him to gradually build up a fund of skills and information in a specific field of criminal practice that is indispensable to departmental efficiency.

In support of progressive specialization, the members of this Division, during 1962, attended various seminars given by colleges, universities and special police-oriented schools dealing with such subjects as auto theft, juvenile problems, burglary, robbery, forgery, homicide investigation, advanced fingerprinting and police science.

Of special interest is the work of the Juvenile Squad, consisting of a detective sergeant and two plainclothesmen, who handled 485 cases of juvenile offenders in 1962. Contrary to other phases of police work, the job of the Juvenile Officer is not "enforcement." In processing an individual case, the preliminary factual investigation is followed by diagnostic procedures in

an attempt to identify those factors in the individual child and his environment that are responsible for behavior deviations.

Another facet of the variable duties of the Division is the task of undercover security provisions for the protection of the President of the United States, his family, visiting heads of state and other dignitaries while they are enroute through the park system. This entails close liaison with Secret Service Agents and other security agencies and has established a fine bond of harmonious and friendly relations between these security organizations and the Park Police.

The maintenance of an extensive "mug" and "modus operandi" file provides valuable clues and leads in the many investigations conducted by the personnel in this Division and also proves an invaluable aid to the uniformed personnel of the Force.

Despite an advance in criminal activities in the Capital City and its suburban areas, violence and serious acts of lawlessness in the parks of the National Capital Region have been reasonably well contained.

The Crime Prevention Division, as the name implies, recognizes that an unprecedented opportunity is presented here for constructive police work and that attention to prevention and to the development of constructive behavior patterns hold the greatest of promise in making ultimate arrest unnecessary.

TOTAL CRIMINAL OFFENSES REPORTED, UNFOUNDED, SOLVED, AND PENDING

CLASSIFICATION OF OFFENSES	Offenses Reported	Unfounded	Percent Unfounded	Actual Offenses	Offenses Cleared	Percent Cleared	Pending
PART I OFFENSES							
Murder	0	0	0%	0	0	0%	0
Rape	8	0	0%	8	7	88%	1
Robbery	44	2	4%	42	25	60%	17
Aggravated assault	19	0	0%	19	13	68%	6
Burglary							
Breaking and entering	63	3	5%	60	13	22%	47
Larceny							
\$100 and over	17	0	0%	17	2	12%	15
Larceny							
Under \$100	271	9	3%	262	54	21%	208
Auto theft	42	1	2%	41	9	22%	32
TOTAL	464	15	3%	449	123	27%	326
PART II OFFENSES							
Other assaults	32	1	3%	31	16	52%	15
Destroying government property	1	0	0%	1	0	0%	1
Destroying private property	16	0	0%	16	5	31%	11
Arson	1	0	0%	1	1	100%	0
Sex offenses	34	1	3%	33	24	73%	9
Taking property without right	0	0	0%	0	0	0%	0
Tampering with auto	5	0	0%	5	3	60%	2
Liquor laws	1	0	0%	1	1	100%	0
Gambling	1	0	0%	1	1	100%	0
Weapons	5	0	0%	5	5	100%	0
All other offenses	7	0	0%	7	4	57%	3
TOTAL	103	2	2%	101	60	59%	41



STOLEN PROPERTY		RECOVERED
Currency	\$ 7,030.75	\$ 469.00
Jewelry, Radios, Cameras	2,035.00	464.00
Clothing	1,413.70	591.00
Auto Accessories	1,081.00	63.00
Equipment, Tools, etc.	7,730.20	292.45
Bicycles	377.00	216.00
Miscellaneous	2,850.45	510.10
TOTALS	\$22,518.10	\$ 2,605.55

*Does not include stolen automobiles



IDENTIFICATION ACTIVITY REPORT

PHOTOGRAPH FILE	PRINTS	NEGATIVES
Criminal	162	70
Crime scenes, latent prints, and evidence	336	112
Traffic accidents	1,355	447
Park Police applicants	147	49
Park Police personnel	52	22
Copies sent to National Capital Parks	118	--
Miscellaneous	912	354
TOTALS	3,082	1,054

FINGERPRINT FILE		
Criminal	122	
Latent print investigations	125	
Park Police applicants	60	
Sent to Federal Bureau of Investigation	122	
Filed during year	127	
Received and filed from other jurisdictions	5	
TOTAL	561	

MAJOR OFFENSES REPORTED

1956-1962

	1956	1957	1958	1959	1960	1961	1962
OFFENSES							
Murder	0	0	0	0	1	0	0
Negligent Manslaughter	1	1	2	0	0	0	0
Rape	6	9	10	10	8	3	8
Robbery	19	21	18	17	27	34	42
Aggravated Assault	13	23	20	22	28	17	19
Burglary, Breaking and Entering . . .	23	26	35	33	95	44	60
Larceny, Grand	21	7	12	16	19	24	17
Larceny, petty	221	221	227	274	276	278	262
Auto Theft	35	34	33	48	42	45	41
TOTAL	339	342	357	420	496	445	449

SUMMARY OF SEX OFFENSES

1962

MONTH	SEX OFFENSES REPORTED				ARRESTS FOR SEX OFFENSES			
	Reported	Unfounded	Actual	Solved	Adults Arrested	Juveniles Arrested	Total Sex Arrested	Perverts Investigated
January	2	0	2	2	1	0	1	3
February	2	0	2	1	0	0	0	0
March	3	0	3	1	0	0	0	5
April	2	0	2	1	0	0	0	25
May	6	0	6	3	0	0	0	18
June	3	0	3	3	1	0	1	11
July	3	0	3	3	1	0	1	2
August	9	1	8	5	0	0	0	3
September	6	0	6	6	0	1	1	5
October	3	0	3	2	0	1	1	0
November	1	0	1	0	0	0	0	6
December	2	0	2	0	0	0	0	0
TOTALS	*42	1	41	27	3	2	*5	78

* Does not include perverts.

JUVENILE OFFENDERS APPREHENDED BY AGE AND SEX

OFFENSES	TOTAL	AGE									SEX	
		1-9	10	11	12	13	14	15	16	17	M	F
Aggravated assault	8	3	0	1	3	0	0	1	0	0	8	0
Arson	0	0	0	0	0	0	0	0	0	0	0	0
Destroy government property	0	0	0	0	0	0	0	0	0	0	0	0
Destroy private property	5	1	0	0	1	0	0	0	1	2	5	0
Disorderly conduct	133	25	14	22	16	18	9	10	7	12	131	2
Drunkenness	16	0	0	0	0	0	0	1	10	5	15	1
Fugitive from corr'l. inst.	0	0	0	0	0	0	0	0	0	0	0	0
Fugitive from parents	8	0	0	0	0	0	4	3	0	1	7	1
Gambling	0	0	0	0	0	0	0	0	0	0	0	0
Housebreaking	8	0	0	1	4	3	0	0	0	0	8	0
Investigation	4	0	0	0	0	0	2	0	0	2	4	0
Miscellaneous nuisances	8	2	0	0	0	0	3	0	2	1	8	0
Murder, non-negl. manslaughter	0	0	0	0	0	0	0	0	0	0	0	0
Narcotic drug laws	0	0	0	0	0	0	0	0	0	0	0	0
Negligent manslaughter	0	0	0	0	0	0	0	0	0	0	0	0
Other assaults	13	1	3	0	1	1	2	2	2	1	13	0
Receiving stolen property	0	0	0	0	0	0	0	0	0	0	0	0
Robbery	33	0	0	1	2	1	13	9	7	0	33	0
Sex offenses	2	0	0	0	0	0	1	1	0	0	2	0
Taking property without right	46	6	2	1	3	10	12	9	2	1	46	0
Tampering with auto	10	0	2	1	1	3	0	0	2	1	10	0
Traffic violations	35	0	0	1	0	0	6	1	9	18	28	7
Truancy from school	62	7	5	5	3	9	10	10	6	7	45	17
Unauthorized use of auto	4	0	0	0	0	0	0	0	2	2	4	0
Vandalism	19	4	2	2	1	3	1	1	2	3	18	1
Weapons, carry-poss-discharging	12	1	0	0	1	4	0	1	4	1	12	0
All other offenses	28	2	1	5	2	4	5	4	1	4	28	0
TOTALS	454	52	29	40	38	56	68	53	57	61	425	29

JUVENILE OFFENDERS APPREHENDED BY DISPOSITION

OFFENSES	Juvenile Court	Receiving Home	Released to Parents	Police Hearing	Other Jurisdictions	Traffic School	TOTAL
Aggravated assault	0	0	8	0	0	0	8
Arson	0	0	0	0	0	0	0
Destroy government property	0	0	0	0	0	0	0
Destroy private property	3	0	2	0	0	0	5
Disorderly conduct	2	0	125	0	6	0	133
Drunkenness	1	1	12	0	2	0	16
Fugitive from corr'l. inst.	0	0	0	0	0	0	0
Fugitive from parents	1	2	5	0	0	0	8
Gambling	0	0	0	0	0	0	0
Housebreaking	5	0	3	0	0	0	8
Investigation	0	0	4	0	0	0	4
Miscellaneous nuisances	0	0	8	0	0	0	8
Murder, non-negl. manslaughter	0	0	0	0	0	0	0
Narcotic drug law	0	0	0	0	0	0	0
Negligent manslaughter	0	0	0	0	0	0	0
Other assaults	0	0	13	0	0	0	13
Receiving stolen property	0	0	0	0	0	0	0
Robbery	33	0	0	0	0	0	33
Sex offenses	1	0	1	0	0	0	2
Taking property without right	15	1	28	0	2	0	46
Tampering with auto	0	0	10	0	0	0	10
Traffic violation	9	0	10	0	0	16	35
Truancy from school	3	1	35	23	0	0	62
Unauthorized use of auto	3	1	0	0	0	0	4
Vandalism	2	0	17	0	0	0	19
Weapons, carry-poss-discharging	2	0	10	0	0	0	12
All other offenses	0	0	28	0	0	0	28
TOTALS	80	6	319	23	10	16	454

JUVENILES APPREHENDED BY LOCATION



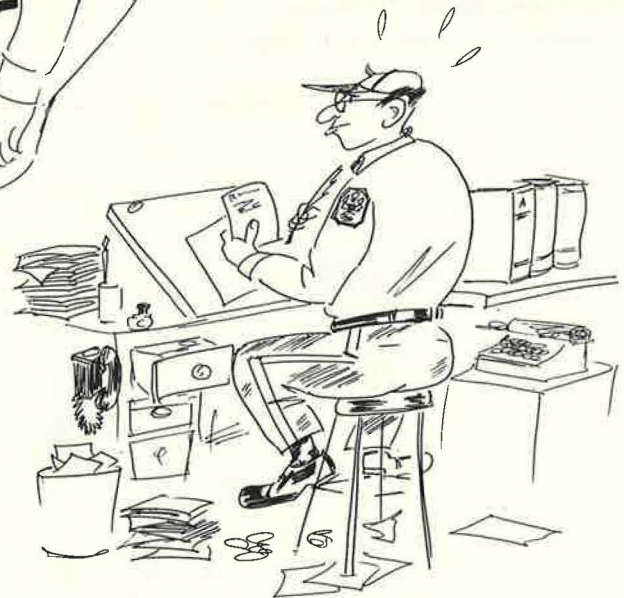
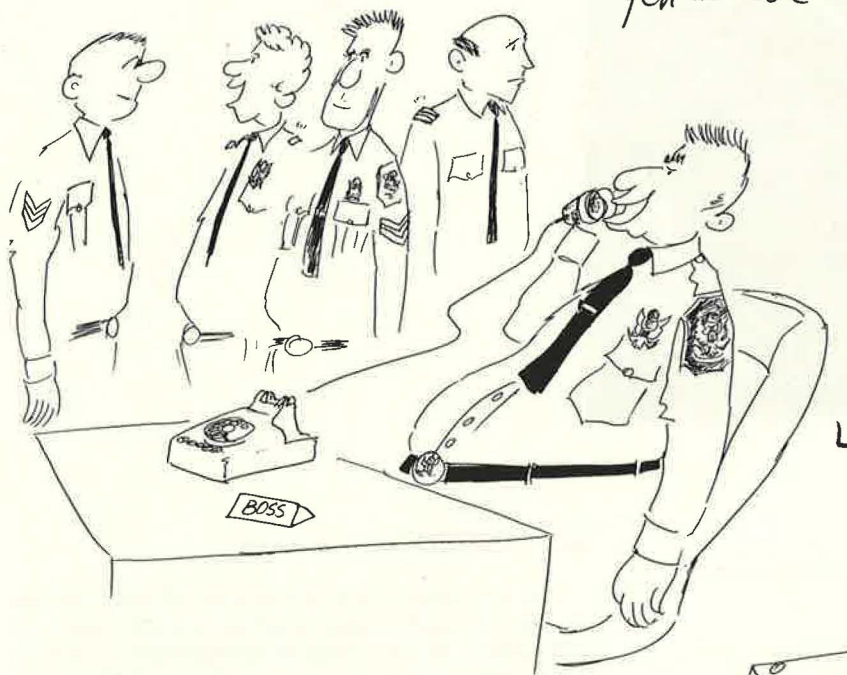
TYPE OF OFFENSE

	Columbia Island	Baltimore and Washington Parkway	Chesapeake and Ohio Canal	City Streets	Constitution Avenue	East Potomac Park	Ellipse	Fort Hunt, Virginia	Garfield Park	Fort Washington, Maryland	Franklin Park	Fort Dupont	George Washington Memorial Parkway	Lafayette Square	Mall	Meridian Hill Park	Pentagon Network	Reservations East	Reservations West	Rock Creek Park	Rock Creek Parkway	Suitland Parkway	Washington Monument Grounds	West Potomac Park	Anacostia Park	Totals
Aggravated assault							7						1													8
Investigation											2			2												4
Dest. movable property		2													3											5
Disorderly conduct		2					2						7	3		6		71	15	16		4	1	6		133
Drunkenness			2	1		9																				16
Trespassing																										0
Fugitive from parents	2	2						1							3											8
Other assaults											4					1		4				3			1	13
Housebreaking						3														3	2					8
Miscellaneous nuisances								3					1						4		2					8
Robbery					2	2	6														2		16	5		33
Sex offenses					2	2									1									1		2
Taking property without right				2	10	4							2		11		2		6	2	2		2	1	2	46
Tampering with auto			2												8											10
Traffic violations		2		2	4								4							1	14	2	1			35
Truancy from school	2	2	5					10	3	1	1	1	7	2	1	5		3		2	2	1	4	2	3	62
Unauthorized use of auto			1															2						1		4
Vandalism		5											5								5	1			3	19
Weapons, carry-poss-discharging								1					4	2				1		4						12
All other offenses													4	4	5		2		3	4	2		8			28
TOTALS	4	15	10	5	16	18	16	14	3	8	8	5	34	13	32	12	4	81	32	52	9	7	23	24	9	454

SERVICES DIVISION

Yeh... we are kinda

understaffed !!





Lieutenant Samuel H. Hower
Commander of Services Division

SERVICES DIVISION

The high quality of police service afforded visitors to the National Capital Parks—combined with the promptness and courtesy in responding to many unusual types of requests for service—has distinguished the Services Division and led to substantial increase in the work of the Force. As law enforcement becomes more specialized, the line divisions of the Park Police are becoming more and more dependent on the support of a competent and diversified Services Division, responsible for recruitment, training, communications, record keeping, transportation, supplies, equipment and maintenance.

Adequate performance of the services function facilitates operation; only then will line operations receive the right type of men, material, communications facilities and the statistical data needed to plan and carry to a successful conclusion the general and special operations of the Force.

To provide for the satisfactory accomplishment of these functions, the Services Division is sub-divided into three auxiliary branches, namely: Communications and Records, Transportation and Equipment, and Training.

Communication & Records



COMMUNICATIONS AND RECORDS UNIT: This is the information center of the United States Park Police Force. The staff personifies the nerve center and memory of police operation. From this center emanate all radio communications, telephone switchboard calls, teletype and daily bulletins. From beginning to end, crimes and complaints are recorded, processed and maintained by the personnel comprising this branch of the Services Division. It is here that all records pertaining to an incident are systematically filed and retained, thus providing a permanent accounting of complaints and reports received and action taken.

Records bring together the known and unknown factors of a crime for the investigator and are an invaluable aid to the administrator in planning programs and manpower deployment.

Demonstrating the workload of the Communications and Records Unit, the United States Park Police, in 1962, prepared and submitted 11,909 reports of all types, 618 of which pertained to conditions affecting departments other than Park Police.

A signal accomplishment of the Communications and Records Unit in 1962 was the changeover of the entire statistical reporting system to a tape-oriented Data Processing System. It is estimated that the transition will save a minimum of 1440 man hours annually by eliminating the sorting of cards and posting of statistics by hand. The new system will mean more statistics available in a more readily usable form for less cost, contributing to greater efficiency in operation for the entire Force.



Sergeant Lydia H. Miches
Officer In Charge
Communication and Records



A recent addition—our Diebold elevator file for filing locator cards. (Capacity 250,000 3x5 cards)



Our first statistical run on the IBM 1401 Data Processing System which is tape-oriented.

Training



What am I ?? the only man here!!

TRAINING UNIT: In addition to an advanced recruitment program during 1962, the Training Unit initiated an accelerated training program in which special emphasis was placed on local in-service training. As a result, the Recruit Indoctrination School was increased to 12 weeks and all recruits were given an additional 15 weeks of indoctrination, including 3 weeks at the police pistol range for a total of 27 weeks of intensive training. All members of the Force were encouraged to improve themselves professionally through attendance at training courses conducted by the Training Unit and also by their attendance at police science training courses given by colleges, universities and special police-oriented schools. Recognition of the police service as a bona fide profession is growing throughout the country as evidenced by some 50 institutions of higher learning which offer courses of study in police administrative and scientific fields. At present, the United States Park Police counts among its members many who have received college degrees and many who have received additional specialized training available from various police academies throughout the United States and Canada.

Indicative of the success of the training program, Force members received certificates from 87 outside schools during 1962, 37 of which were attended at the member's expense and on off-duty time. In addition, a two-week Police Supervision course was conducted



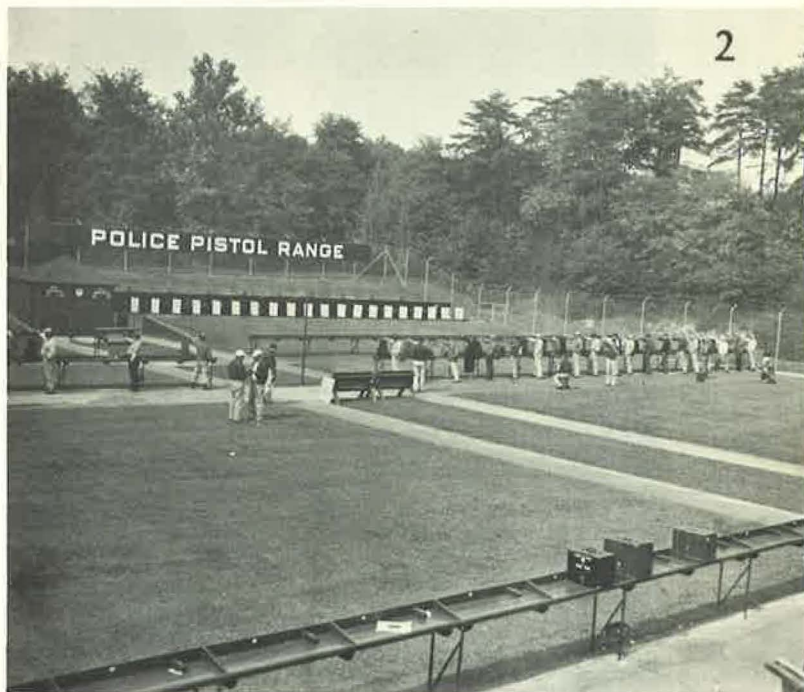
Lieutenant Roland A. Fallin
Officer in Charge
Training

with 14 Force members and 19 outside individuals graduating.

A thoroughly comprehensive police professional library is maintained by the Training Unit. Used extensively by Force members, it is rapidly being expanded to provide still further reference and training opportunities.

To meet the growing needs of the Force, the Training Unit, during 1962, intensified the search for highly qualified recruits. 518 applicants were interviewed and investigated. Of that total, 29 were ultimately appointed to the Force.

As an integral part of the training function, a completely modern outdoor police pistol range is maintained for Force training purposes in Fort Totten Park. It is here that all members are required to qualify twice each year over the FBI practical pistol course. In addition to this requirement, a night firing pistol course was recently initiated. It is here too, that recruit firearms training, consisting of 3 weeks of intensified study and practical application in the use of all types of police firearms and restraint equipment, is conducted. The Range Officer and his two assistants produce sufficient 38 caliber mid-range re-load ammunition for the entire Force and provide for the complete repair of all service firearms. This results in a very substantial saving each year in maintenance and operation costs.



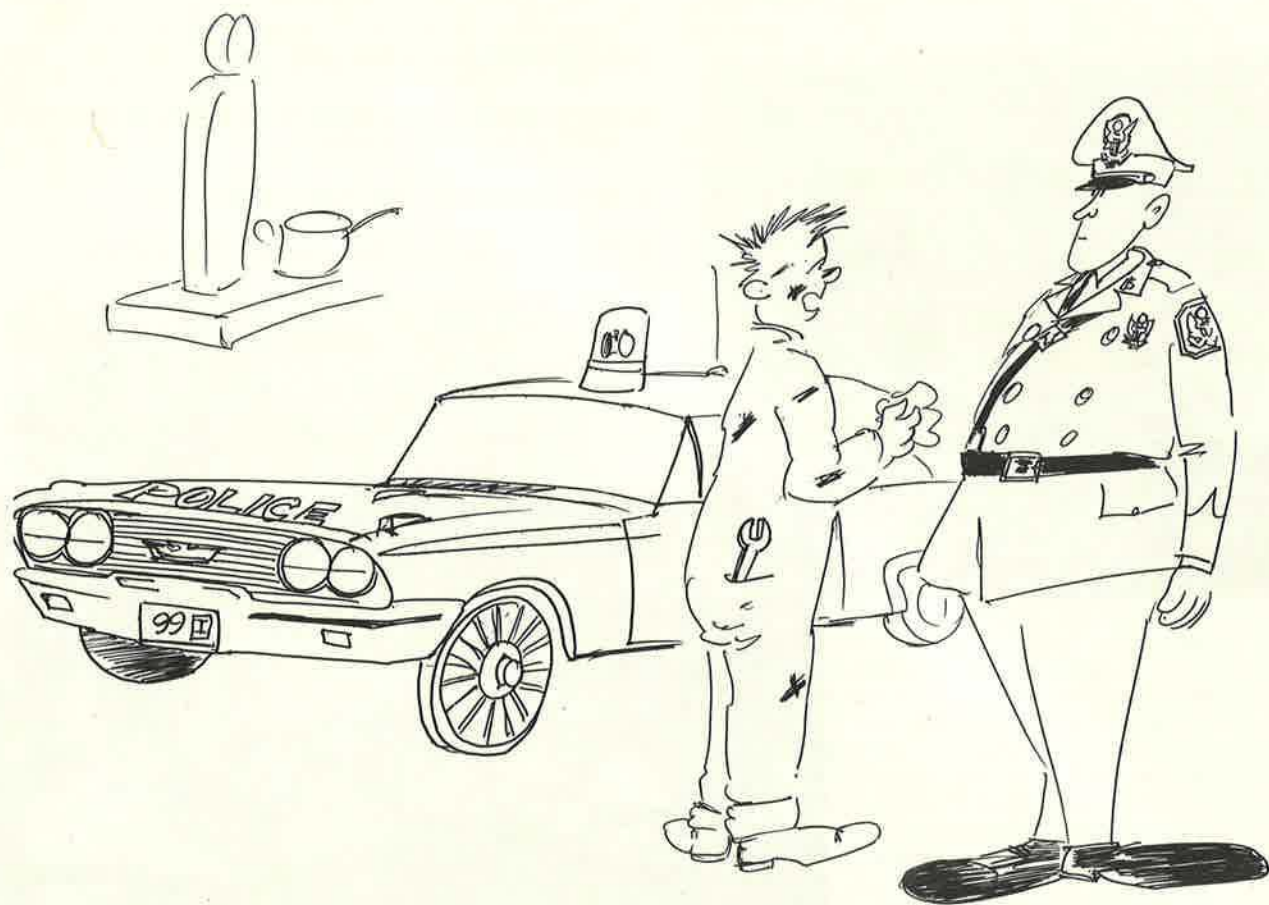
TRAINING DIVISION ACTIVITIES

1. Our Ever Expanding Library of 354 Books, 43 of which we added during 1962
2. The United States Park Police Pistol Range
3. One of the 518 Applicants Interviewed during 1962
4. One of our Recruit Classes



Transportation & Equipment

"SORRY ... YOU RAN OUTA YOUR TIRE QUOTA"





Sergeant Lawrence E. Brunner
Officer in Charge
Transportation and Equipment

TRANSPORTATION AND EQUIPMENT UNIT: There are two major functions of police organization—preparation for, and delivery of, police service; the Transportation and Equipment Unit is concerned primarily with preparation. Although most of its work is "behind the scenes," this branch is one of the most important to effective Force functioning. The Transportation and Equipment Unit requisitions, receives, issues and accounts for new and additional supplies and equipment and is further charged with the responsibility for all lost or confiscated property. In addition to supplying the line divisions with transportation, communication facilities and material necessary for efficient and expeditious functioning, this branch is also charged with the maintenance of the vehicle impounding lot.

Available for all types of police service, the United States Park Police has a current inventory of 34 radio cruisers, 2 jeeps, 31 motorcycles, 1 mobile field headquarters, 1 utility truck, 2 horse vans, 20 horses and 5 dogs. Horses are sheltered and cared for in four widely separated police stables—each conveniently located to serve large undeveloped wooded areas of the park system where the use of horse mounted patrols is most effective.



1. Spring and Fall Uniform
2. Summer Motorcycle Uniform
3. Winter Horse Mounted Patrol Uniform
4. Summer Foot Patrol and Cruiser Uniform
5. Summer Patrol Horse Mounted Patrol Uniform
6. Summer Motorcycle Uniform
7. Winter Uniform



POLICE EQUIPMENT (AUTOMOTIVE AND EQUESTRIAN)

EQUIPMENT	1960	1961	1962
Cruisers	30	30	33
Motorcycles	31	31	32
Duplex Power Plant (trailer unit)	1	1	1
Commander cruiser (mobile headquarters unit)	1	1	1
Horse trailers	1	1	3
Jeeps	3	3	2
Trucks	1	1	1
Horses	17	17	20



During the calendar year 1962 the Transportation and Equipment Branch performed the following services.

Cruiser Repairs	1,562
Cruisers Lubricated	360
Cruiser Speedometer Checks	48
Mobile Headquarters Transported	8
Requisitions Prepared	169
Job Orders Prepared (replacement signs & repairs)	216
Requisitions For New Signs	31
Requisitions For Duplicating Work	63
Property Items (lost, found, confiscated) Received	753
Property Released to Owners or Claimants	209
Property Items Condemned	500
Property Items on Hand	44

