

1968 ANNUAL REPORT

ANNUAL REPORT

<u>Contents</u>	<u>Page</u>
Highlights	2
Letter to Regional Director	3
Awards	5
Training Activities	7
Assignment of Personnel	8
Staff Assignments	9
Force Activities	10
Major Offenses	11
Part 11 Offenses and Services	14
Persons Charged	17
Traffic Accidents	20
Visitation	26
Special Events	27
Areas Patrolled	28

HIGHLIGHTS

	<u>1967</u>	<u>1968</u>	<u>INCREASE</u>	<u>DECREASE</u>
TOTAL ALL ARRESTS -----	36,947	40,902	3,955	
Adults Arrested -----	36,296	40,206	3,910	
Juveniles Apprehended -----	651	696	45	
TOTAL ARRESTS FOR MAJOR OFFENSES --	288	277		11
Adults Arrested -----	168	165		3
Juveniles Apprehended -----	120	112		8
TOTAL MAJOR OFFENSES REPORTED -----	1,197	1,336	139	
TOTAL MAJOR OFFENSES UNFOUNDED -----	105	62		43
TOTAL MAJOR OFFENSES SOLVED -----	231	223		9
ACTUAL MAJOR OFFENSES -----	1,092	1,274	182	
AUTOMOBILES STOLEN -----	57	63	6	
AUTOMOBILES RECOVERED -----	46	45		1
AUTOMOBILES RECOVERED FOR OTHER JURISDICTIONS -----	225	223		
TOTAL TRAFFIC ACCIDENTS -----	2,756	3,053	297	
Fatal Accidents -----	11	27	16	
Injury Accidents -----	610	657	47	
Property Damage Only Accidents -	2,135	2,369	234	
TOTAL TRAFFIC DEATHS -----	11	32	21	
Pedestrian Deaths -----	1	2	1	
TOTAL TRAFFIC INJURIES -----	949	1,020	70	
Pedestrian Injuries -----	27	25		2
*PROPERTY STOLEN -----	\$ 52,997.49	\$ 79,308.41	\$26,310.92	
PROPERTY RECOVERED -----	14,187.69	5,892.51	8,295.18	
Per Cent Recovered -----	27%	7%		20%
TOTAL FINES AND FORFEITURES -----	\$ 252,569.50	\$ 228,676.00		\$ 23,893.50
District of Columbia -----	60,335.00	55,627.00		4,708.00
Maryland -----	143,841.50	115,371.00		28,470.50
Virginia -----	48,393.00	57,678.00	9,285.00	

* PROPERTY STOLEN DOES NOT INCLUDE AUTOMOBILES



UNITED STATES
DEPARTMENT OF THE INTERIOR
NATIONAL PARK SERVICE
NATIONAL CAPITAL REGION
HEADQUARTERS, UNITED STATES PARK POLICE
1100 OHIO DRIVE, S. W.
WASHINGTON, D. C. 20242

IN REPLY REFER TO:

April 10, 1969

Memorandum

To: Regional Director
From: Chief, U. S. Park Police
Subject: Annual Report for calendar year 1968

The United States Park Police Force is responsible for providing visitor services and protection, prevention and detection of crime, enforcement of park regulations and other applicable laws in order to preserve park resources, and to provide a pleasurable atmosphere for those who seek wholesome enjoyment in our park areas. This report reflects a summarization of the activities of the Park Police during the 1968 calendar year.

For the first time in many years there was a decline in total visitation in the National Capital Region. It is estimated that there were slightly less than 20 million persons who visited the park areas. The decline may have been attributable to civil disorders in the spring of 1968 which caused cancellation of two large events; the Cherry Blossom Festival and the National Safety Patrol Parade. Although there was an increase in the number of special events held in the parks, which included many demonstrations, attendance at such events showed a significant decline.

During the year, crime in the parks continued to increase with serious offenses increasing each month of the year. Of the 1274 major offenses reported, 34% were acts of violence against persons. There were 230 cases of robbery reported in 1968 as opposed to 154 during 1967, 39 reports of rape against 30 in 1967, and 165 assaults as opposed to 120 the previous year. There were small increases in the crimes of petit larceny and auto theft. Part II offenses showed the same 18% rise over the previous year. Declines in vandalism, grand larceny and drunkenness were the only decreases noted. The decline in the offenses of drunkenness was occasioned by new procedures in the handling of the offense in the District of Columbia.

With the increase in the number of automobiles using park roadways, came an increase in the number of motor vehicle accidents, a total of 3,053 during the year. This reflects an increase of 297 over the previous year. There were 27 fatal accidents in which 32 persons were killed, two of whom were pedestrians, an increase of 21 over the previous year. In 657 personal injury accidents 1,020 persons sustained varying types of injuries throughout the park system in the National Capital Region.

Great demands upon manpower were made in 1968 occasioned by civil disturbances in early April, the Poor Peoples Campaign in May and June and sporadic demonstrations throughout the summer months. Events such as these further diluted the already meager field forces, pointing up the great need for additional manpower. Nevertheless, the Force managed to provide good public service. Analysis of manpower deployment during 1968 revealed that 23,415 manhours were spent in police services connected with special events and demonstrations. This figure does not include 37,269 hours of special duty performed in connection with the Poor Peoples Campaign. In addition, the quality of services provided depends to a great degree upon training afforded Force members. In spite of heavy demands upon manpower, the Force managed to provide many hours of classroom and field training in human relations, crowd control, firearms and specialized courses. A total of 116 Force members were also enrolled in Police Science and Administration courses conducted by the American University.

During the calendar year 1968 there were 12 separations by retirement and seven officers resigned. The Force strength at the end of the year was 284 opposed to 281 for the previous year. There were 79 authorized positions left unfilled in compliance with the Revenue and Expenditure Control Act of 1968. The Force was indeed fortunate however, to have been allotted positions by and from the Service which helped to maintain the above strength throughout the year.

We are continuing to explore ways to provide better police services to the various parks in our region. A study is underway to make use of some types of equipment which would facilitate better patrol coverage. Serious consideration is being given to the use of motor scooters for some of our patrol areas.

To strengthen supervision and to provide better protection of park resources, we are proposing the establishment of several additional substations in the field areas. Our one existing substation located in Greenbelt Park, has proven successful and extremely beneficial to operations.

We continue to be most appreciative of the fine direction and support we have received from you and other region officials. The exceptional help and cooperation from the National Park Service and the Department also reassures us in our endeavor to render the public service which our police force strives to give.


Grant Wright



Distinguished Service Awards

GRANT WRIGHT, in recognition of an eminent career in police administration and management with the U.S. Park Police. As a 21-year veteran of the Force, Chief Wright has demonstrated his outstanding abilities as an able and progressive administrator. Under his leadership, highly significant advances have been made in management, cost reduction programs, training and police procedures. His calm and deliberate approach to challenging situations has become a hallmark of his effective work in the area of police management. His outstanding administrative ability is clearly evident by his progression to the rank of Chief of Police on August 11, 1968.



WALTER W. LANGE, in recognition of outstanding service as a law enforcement officer, U.S. Park Police, and for his extremely competent professional and management support as Associate Chief and later as Chief of the U. S. Park Police. When the Federal section of the Baltimore-Washington Parkway was opened in 1953, he was selected to supervise the police activities and to coordinate the many details involved with its operation. He was commended for the outstanding manner in which he resolved jurisdictional problems, performed the major task of establishing the U.S. Commissioner's Court in the Beltsville Research Center, and at the same time maintained cordial relationships with other Federal agencies.



ALFRED D. BEYE, in recognition of outstanding service in police administration with the United States Park Police. Since 1961, Deputy Chief Beye has been directly responsible for police plans and arrangements for every major special event and demonstration held in the areas under the jurisdiction of the Force. In May 1968, because of the illness and subsequent retirement of the Chief, it was necessary for Beye to assume the duties of Acting Deputy Chief, along with coordinating police arrangements for the Poor People's Campaign. His expertise in police procedures for handling large crowds of demonstrators was, more than any other single factor, responsible for the highly efficient manner in which police service was provided at Resurrection City.



AWARDS

MERITORIOUS SERVICE AWARDS

Deputy Chief William W. Gunter

In recognition of exceptional service in the Department of the Interior. Deputy Chief Gunter served with the U. S. Park Police since 1941. He had served as footman, cruiserman, Plainclothesman, Detective Sergeant, Detective Lieutenant, and Captain. He held the position of Deputy Chief when he retired on April 30, 1968.

Inspector Samuel H. Hower

In recognition of exceptional service in the Department of the Interior. Inspector Samuel H. Hower served with the U. S. Park Police since 1942. He served as footman, motorcycle patrolman, and was promoted to Corporal in 1952. Subsequent promotions led to the position of Inspector which he held when he retired on April 30, 1968.

COMMENDABLE SERVICE AWARDS

Lieutenant Wallace G. Angel

Upon retirement after more than 28 years of service with the Federal Government, joined U. S. Park Police in July, 1940. He served in various assignments and held the rank of Lieutenant when he retired on May 31, 1968.

Sergeant Thomas K. Baber

Upon retirement after more than 26 years of service with the Federal Government, joined the U. S. Park Police in October, 1951. He served in various assignments and held the rank of Sergeant when he retired on August 31, 1968.

Detective Ralph T. Crump

Upon retirement after more than 23 years of service with the Federal Government, joined the U. S. Park Police in April, 1950. He served in various assignments and held the position of Detective when he retired on April 30, 1968.

Detective Nolan J. Devine

Upon retirement after more than 18 years of service with the Federal Government, joined the U. S. Park Police in January, 1955. He served in various assignments and held the position of Detective when he retired on July 31, 1968.

Sergeant James F. Hassett, Jr.

Upon retirement after more than 20 years of service with the Federal Government, joined the U. S. Park Police in November, 1950. He served in various assignments and held the rank of Sergeant when he retired on July 31, 1968.

Private Woodrow W. Hawkins

Upon retirement after more than 22 years of service with the Federal Government, joined the U. S. Park Police in November, 1950. He served in various assignments and held the position of Horse Mounted Patrolman when he retired on November 30, 1968.

Sergeant Tyrus S. Peele

Upon retirement after more than 19 years of service with the Federal Government, joined the U. S. Park Police in November, 1950. He served in various assignments and held the rank of Sergeant when he retired on May 31, 1968.

UNITED STATES PARK POLICE
TRAINING PROGRAM

<u>TRAINING RECEIVED THROUGH:</u>	<u>NUMBER OF COURSES</u>	<u>TOTAL PARTICIPATION*</u>	<u>HOURS ATTENDED</u>
courses given by U. S. Park Police-	19	978	26,553
other agencies (at no cost)-----	16	516	6,076
use of Government Funds-----	26	46	2,264
partial Government Expense and partial employee expense-----	37	282	10,520
use of personal funds only (employee attends on his own time)-	22	54	1,852
use of G. I. Bill (employee attends on his own time)-	14	19	760
TOTAL-----	134	1,895	48,025

*Includes several participants who attended more than one course.



Recruit Class of 1968-69

FORCE ACTIVITIES



An Officer Gives Directions



Dog Show



Solidarity Day



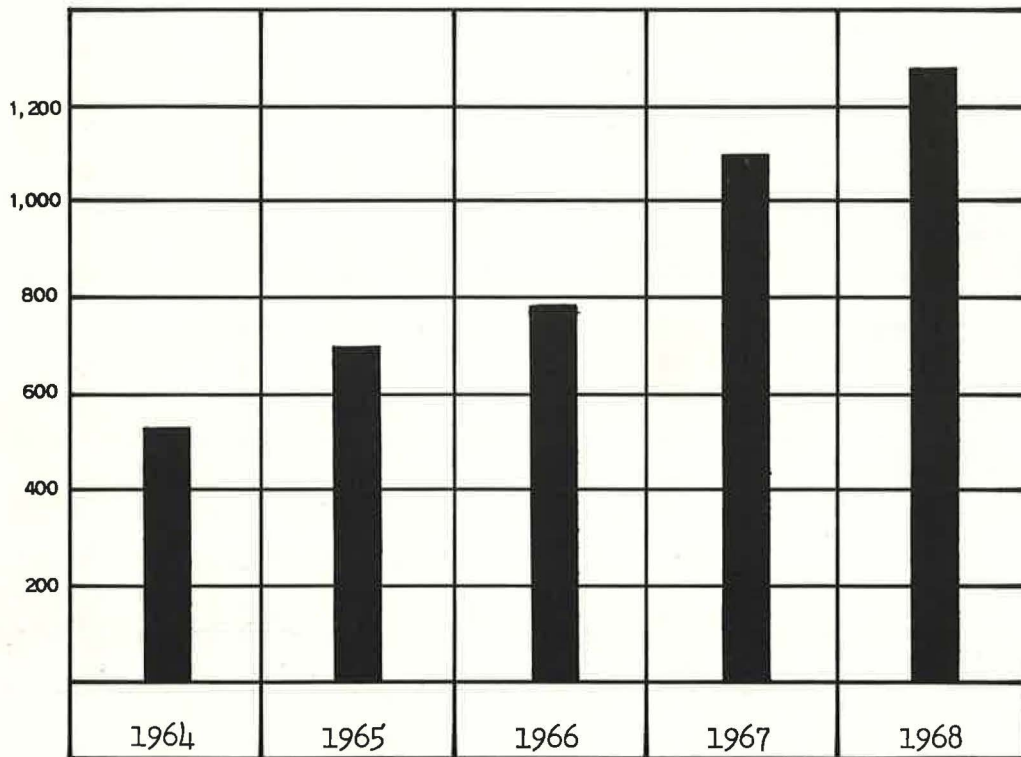
Horse Show



Traffic Officer of the Year

FIVE YEAR COMPARISON OF
ACTUAL MAJOR OFFENSES

OFFENSES	1964	1965	1966	1967	1968
Murder -----	0	0	0	1	0
Negligent Manslaughter -----	2	9	3	0	0
Rape -----	11	13	16	30	39
Robbery -----	62	67	91	154	230
Assault -----	38	82	74	120	165
Burglary, Breaking and Entering --	78	56	41	101	102
Larceny, Grand -----	32	42	55	90	78
Larceny, Petty -----	296	406	456	539	597
Auto Theft -----	23	20	58	57	63
TOTAL	542	695	794	1,092	1,274



PART II OFFENSES REPORTED,
BY CLASSIFICATION

	D.C.	MD.	VA.	TOTAL
OFFENSES AGAINST FAMILY	1		1	2
ARSON	1			1
VANDALISM	413	123	57	593
STOLEN PROPERTY	6		1	7
WEAPONS	108	41	23	172
SEX OFFENSES (Other than Rape)	73	6	5	84
NARCOTIC AND DRUG LAWS	6	1	4	11
LIQUOR LAWS	9	6	1	16
DRUNKENNESS	149	31	18	198
DISORDERLY	683	72	60	815
VAGRANCY	4			4
GAMBLING	9	1		10
DRIVING WHILE DRUNK	26	42	27	95
ROAD AND DRIVING VIOLATIONS	107	136	48	291
PARKING VIOLATIONS	711	33	19	763
TRAFFIC AND MOTOR LAWS	68	33	20	121
SUSPICIOUS PERSONS	328	97	66	491
ALL OTHER OFFENSES	310	33	23	366
TOTAL	3,012	655	373	4,040

SERVICE INCIDENTS REPORTED,
BY CLASSIFICATION

	D.C.	MD.	VA.	TOTAL
ABANDONED AND IMPOUNDED AUTOS	688	307	54	1,049
ANIMALS AND WILDLIFE	151	54	36	241
ASSISTANCE TO CITIZENS	1,517	1,987	949	4,453
ASSISTANCE TO OTHER DEPARTMENTS	1,164	298	120	1,582
BOMB THREATS	3	1		4
DEATHS	30	20	4	54
DISASTER	1			1
UNSECURED INSTALLATIONS	151	7	11	169
DAMAGE GOV'T PROPERTY (NON MALICIOUS ONLY)	19	24	3	46
FIRES	186	104	37	327
HAZARDOUS CONDITIONS	138	50	48	236
ATHLETIC	133	15	13	161
PARK MAINTENANCE NEEDED	1,312	236	252	1,800
PERMITS	10	1		11
PERSONNEL	40	1		41
PERSONS MISSING AND FOUND	117	23	13	153
POLICE SERVICES	1,323	67	115	1,505
PROPERTY LOST AND FOUND	599	68	82	749
SICK AND INJURED	496	63	49	608
SUICIDES	13	1	3	17
TOTAL	8,091	3,327	1,789	13,207

PART II OFFENSES REPORTED,
BY MONTH & LOCATION

LOCATION	JAN	FEB	MAR	APR	MAY	JUN	JUL	AUG	SEPT	OCT	NOV	DEC	TOTAL
ANACOSTIA PARK	1	1	6	2	5	9	16	23	3	8	5	3	82
BALTIMORE-WASH. PRKWY.	31	31	36	24	29	14	40	18	22	24	20	28	317
AGRIC. RESEARCH CENTER	3	4	5	3	1	3	3	6	1	3	2	1	35
C & O CANAL	5	8	14	14	13	10	12	11	5	10	6	3	111
CITY STREETS	7	5	9	3	10	2	2	6	4	4	4	3	59
COLUMBIA ISLAND			1	5	4	3		2		1	4	2	22
CONSTITUTION AVENUE	2	4	2	4	4	4	15	5	1	1	6	4	52
DUPONT CIRCLE	2	8	8	5	10	11	11	15	6	8	4	5	93
EAST POTOMAC PARK	2	4	4	7	6	17	11	18	5	4	3	3	84
ELLIPSE	5	9	11	15	14	5	14	9	13	19	17	23	154
FORT DUPONT		5	2	1	4	4	4	12	11	3	1	3	50
GREAT FALLS, MD.	2	3	6	4	3	2	2	2	3	1	4	1	33
FORT FOOTE, MD.			2	1	1	2	2	3	1	5	3	3	23
FORT HUNT, VA.		2	2	2	10	7	4	5	5	3	2	2	44
FORT WASHINGTON, MD.	3	1	6	3	4		4		3	3	1		28
JONES POINT, VA.	1	1	1							1			4
FRANKLIN PARK		3	5	1	5	2	6	4	4	8	5	1	44
GARFIELD, MAR. & FOL.			1	4		2		1					8
GREAT FALLS, VA.	2	1	5	3	2	2	3		3	2	2		25
G.W.M.P., VA.	26	23	30	30	26	30	28	25	12	24	21	24	299
GREENBELT PARK		1	1	3	1	2	1	1	1	2	2		15
JUDICIARY SQUARE	1		1	1	1			2					6
LAFAYETTE PARK	3	3	2	2	4	3	8	5	6	5	90	2	133
G.W.M.P., D.C. (Adj. to C & O)												1	1
LINCOLN PARK		1	1	4	1	1	11	5	4	2		1	31
G.W.M.P., MD.		3	9	5	1	2	3	6	7	3	4	1	44
MALL	21	27	19	13	15	12	22	21	16	13	12	11	202
MERIDIAN HILL	3	3	5	11	8	5	13	9	7	3	6	2	75
MONTROSE PARK			7		2		3				2		14
MT. VERNON SQUARE	3		3	2	3	6	4	1	1				23
PALISADES	1	2	6	1	2	4	5	1	1	1		1	25
RESERVATIONS EAST	8	12	30	23	30	28	61	28	18	26	12	8	284
RESERVATIONS WEST	7	10	36	27	34	29	76	48	37	23	14	15	356
ROCK CREEK PARK	9	18	28	49	30	42	41	42	25	16	14	10	324
ROCK CREEK PARKWAY	6	2	13	13	16	9	11	34	9	10	8	8	139
ROOSEVELT ISLAND			1	1	2		1	2	1				8
STANTON PARK										1			1
SUITLAND PARKWAY	10	16	30	34	27	12	15	8	14	22	18	15	221
MONUMENT GROUNDS	5	1	8	8	7	9	11	11	8	4	4	5	81
WEST POTOMAC PARK	38	44	72	28	55	70	38	46	36	26	16	21	490
TOTAL	207	256	428	356	390	363	501	435	293	289	312	210	4,040

SERVICE INCIDENTS REPORTED,
BY MONTH & LOCATION

LOCATION	JAN	FEB	MAR	APR	MAY	JUN	JUL	AUG	SEPT	OCT	NOV	DEC	TOTAL
ANACOSTIA PARK	4	16	15	20	26	27	36	35	30	21	20	21	271
BALTIMORE-WASH. PRKWY.	180	189	272	193	174	172	207	247	211	191	206	236	2,478
AGRIC. RESEARCH CENTER	3	10	11	5	7	5	5	5	3	3	4	1	62
C & O CANAL	19	19	14	17	21	17	22	20	13	10	11	8	191
CITY STREETS	107	94	160	91	70	50	69	97	52	72	86	86	1,034
COLUMBIA ISLAND	12	2	26	8	12	10	9	24	10	15	10	13	151
CONSTITUTION AVENUE	15	13	21	44	49	58	75	130	57	58	36	29	585
DUPONT CIRCLE	13	12	28	23	43	37	47	31	27	32	18	16	327
EAST POTOMAC PARK	24	18	27	30	30	32	45	39	20	15	11	16	307
ELLIPSE	20	26	50	62	49	37	27	30	43	49	40	123	556
FORT DUPONT	13	8	16	6	8	3	9	8	8	4	2	4	89
GREAT FALLS, MD.		7	6	9	10	4	5	6	4	5	2	1	59
FORT FOOTE, MD.		1	3	3	3	1		2	3	2	2		20
FORT HUNT, VA.	1	3	7	6	3	7	9	11	13	8		1	69
FORT WASHINGTON, MD.	1	1	6	1	2		6	2	2	3	4	1	29
JONES POINT		1	3		1				2	2		1	10
FRANKLIN PARK	9	17	16	11	6	1	14	18	19	14	8	12	145
GARFIELD, MAR. & FOL.	2		3			2	4		2	1			14
GREAT FALLS, VA.	2	5	19	12	13	15	20	12	2	2	6	7	115
G.W.M.P., VA.	137	94	182	121	113	131	132	139	95	134	134	123	1,535
GREENBELT PARK	4	2	7	6	4	4	4	8	3	8	1	2	53
JUDICIARY SQUARE	1	1	3	3	2	2		1	2	1	1	1	18
LAFAYETTE PARK	8	10	8	11	17	6	32	31	19	11	17	9	179
G.W.M.P., D.C. (Adj. to C & O)			1								1		2
LINCOLN PARK	1	3	2	5	8	7	4	2	4	8	3	3	50
G.W.M.P., MD.	5	17	16	10	16	7	4	10	3	5	7	14	114
MALL	17	17	42	23	21	23	44	38	33	17	23	10	308
MERIDIAN HILL	5	4	7	7	7	4	18	12	9	14	6	9	102
MONTROSE PARK	1	3	5	9	8	1	1	3	10	3	4	1	49
MT. VERNON SQUARE			1	2	2	3		2	3		2		15
PALISADES			4	3	2	3	3	4	1	2	5	4	31
RESERVATIONS EAST	17	19	43	21	18	27	28	41	41	34	13	27	329
RESERVATIONS WEST	32	56	85	70	82	36	49	40	65	53	37	30	635
ROCK CREEK PARK	49	42	84	59	70	72	123	107	59	66	70	67	868
ROCK CREEK PARKWAY	34	27	66	32	35	35	24	32	39	37	40	20	421
ROOSEVELT ISLAND	6	1	4	5	4	3	1	2	4	1			31
STANTON PARK	1			1	5	3	3	1		2			16
SUITLAND PARKWAY	38	59	97	69	45	34	25	54	49	43	61	60	634
MONUMENT GROUNDS	27	18	72	46	35	52	89	74	40	32	33	26	544
WEST POTOMAC PARK	57	42	79	53	76	109	98	74	42	46	43	42	761
TOTAL	865	857	1511	1097	1097	1040	1291	1392	1042	1024	967	1024	13207

PERSONS CHARGED

PART I OFFENSES	ADULT	JUVENILE	TOTAL
Manslaughter by Negligence	5	0	5
Rape	6	0	6
Robbery	18	15	33
Assault	39	11	50
Burglary	4	8	12
Larceny (Except Auto Theft)			
a. \$100.00 and over in Value	6	0	6
b. Under \$100.00 in Value	47	42	89
Auto Theft	40	36	76
TOTAL PART I	165	112	277

PART II OFFENSES	ADULT	JUVENILE	TOTAL
Stolen Property - Buy, Rec. & Possess.	13	5	18
Weapons	68	11	79
Sex Offenses	23	1	24
Narcotic Laws	16	3	19
Liquor Laws	52	3	55
Drunkenness	1,264	3	1,267
Disorderly Conduct	267	114	381
Driving Under Influence	81	1	82
Road & Driving Laws	12,987	47	13,034
Parking Violations	23,736	2	23,738
Traffic & Motor Veh. Laws	1,234	16	1,250
Wildlife, Hunting, etc.	23		23
Vandalism	56	32	88
Vending W/O License	37		37
Gambling, Tampering W/autos, etc.	184	346	530
TOTAL PART II	40,041	584	40,625
GRAND TOTAL	40,206	696	40,902

ANALYSIS OF ADULTS ARRESTED

UNIFORM CLASSIFICATION OF OFFENSES	Released by police (no formal charge)	PERSONS CHARGED THIS YEAR			FOUND GUILTY THIS YEAR		PERCENT FOUND GUILTY	
		Arrested	Summoned or notified	Total	Of offense charged	Of lesser offense	1968	1967
PART I CLASSES								
1. Criminal homicide:								
(a) Murder and nonnegli- gent manslaughter								
(b) Manslaughter by negligence		5		5				100%
2. Forcible rape		6		6	1		17%	
3. Robbery		18		18	1		6%	10%
4. Aggravated assault		29		29	5		17%	24%
5. Burglary—breaking and/or entering		4		4				
6. Larceny— theft (except auto theft):								
(a) \$50 and over in value		5		5	1		20%	
(b) Under \$50 in value		48		48	19		40%	61%
7. Auto theft		40		40	11		28%	21%
Total, Part I Classes		155		155	38		25%	29%
PART II CLASSES								
8. Other assaults		10		10	2		20%	
9. Forgery and counterfeiting								
10. Vandalism		56		56	44		79%	67%
11. Stolen property—buying, receiving, possessing		13		13	2		15%	20%
12. Weapons—carrying, pos- sessing, etc.		68		68	38		56%	24%
13. Prostitution and commer- cialized vice								
14. Sex offenses (except 2 and 13)		23		23	22		97%	55%
15. Offenses against the family and children								
16. Narcotic drug laws		16		16	1		6%	50%
17. Liquor laws		52		52	35		67%	93%
18. Drunkenness		1264		1264	232		18%	18%
19. Disorderly conduct		267		267	226		85%	84%
20. Vagrancy		3		3	2		67%	
21. Gambling		1		1	1		100%	
22. Driving while intoxicated		81		81	46		57%	92%
23. Violation of road and driv- ing laws		322	12665	12987	11316		87%	95%
24. Parking violations		58	23678	23736	23635		99%	97%
25. Traffic and motor vehicle laws (except 22-24)		265	969	1234	957		78%	87%
26. All other offenses		166	74	240	128		53%	85%
27. Suspicion or held for inves- tigation								
Total, Part II Classes		2665	37386	40051	36687		92%	91%
GRAND TOTAL		2820	37386	40206	36725		91%	91%

JUVENILES APPREHENDED

TYPE OF OFFENSE	1964	1965	1966	1967	1968
Rape-----	0	0	0	2	0
Robbery-----	9	9	22	20	15
Assault-----	3	9	12	16	11
Burglary-----	10	7	12	7	8
Larceny-----	91	37	70	38	42
Auto Theft-----	23	12	13	37	36
Stolen Property-----	2	6	6	3	5
Arson-----	3	0	0	0	0
Vandalism-----	22	20	72	101	32
Weapons-----	14	13	26	28	11
Sex Offenses-----	3	0	1	2	1
Narcotic Drug-----	0	0	0	1	3
Liquor Laws-----	0	5	19	3	3
Gambling-----	0	0	0	0	6
Disorderly-----	62	70	80	114	114
Vagrancy-----	0	0	0	0	1
Drunkenness-----	5	7	4	7	3
Curfew & Loitering Laws-----	0	0	27	26	100
Run Aways-----	25	19	37	56	38
Truancy-----	65	83	45	45	111
Driving While Drunk-----	0	0	1	0	1
All Other (Except Traffic)-----	40	74	74	12	90
 Total	 377	 371	 521	 518	 631
 Traffic Violations	 101	 96	 150	 133	 65
 GRAND TOTAL	 478	 467	 671	 651	 696

TYPE OF OFFENSE	10 and Under	11-12	13-14	15	16	17	TOTAL
Robbery-----		7	4	3		1	15
Assault-----		2	3		4	2	11
Burglary-----		2	2	1	3		8
Larceny-----	8	9	8	8	3	6	42
Auto Theft-----		2	6	8	9	11	36
Stolen Property-----				2		3	5
Vandalism-----	5	8	15	1	2	1	32
Weapons-----		2	3		2	4	11
Sex Offenses-----			1				1
Narcotic Drug-----						3	3
Gambling-----			1	2	1	2	6
Driving Under the Influence						1	1
Liquor Laws-----					1	2	3
Drunkenness-----				1	1	1	3
Disorderly-----	6	17	23	17	26	25	114
Vagrancy-----						1	1
All Other (Except Traffic)-	9	17	52	36	46	41	201
Curfew & Loitering Laws----	1	2	7	11	35	44	100
Run-Aways-----	1		9	8	13	7	38
 Total	 30	 68	 134	 98	 147	 154	 631
 Traffic Violations	 2	 3	 4	 20	 36	 65	 65
 GRAND TOTAL	 32	 68	 137	 102	 167	 190	 696

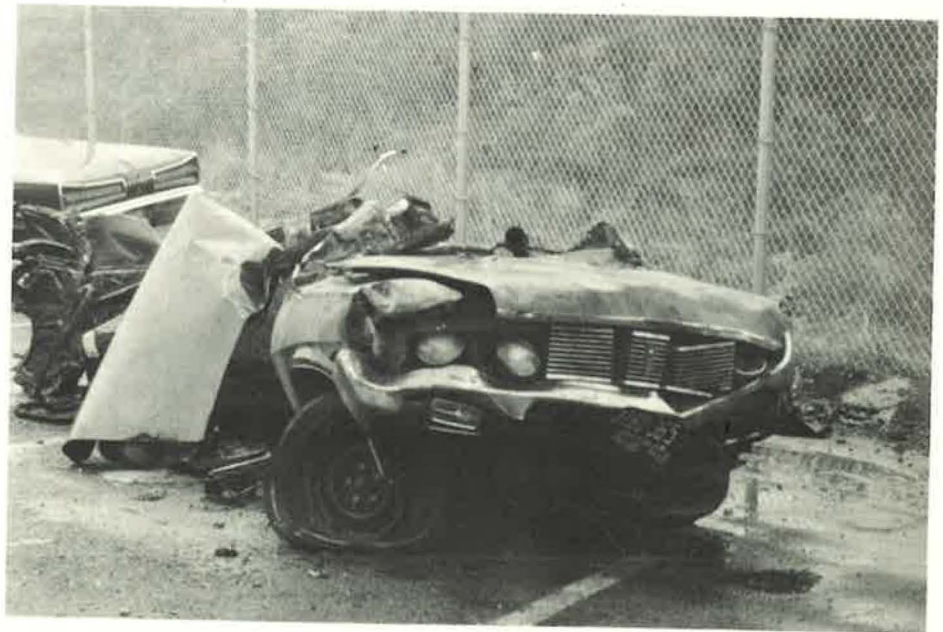


TRAFFIC
ACCIDENTS

\$1,367,668.00
PROPERTY DAMAGE

1,020
PERSONAL INJURIES

32
PERSONS KILLED



TRAFFIC ACCIDENT SURVEY

CLASSIFICATION	District of Columbia	State of Md.	State of Va.	TOTAL
MOTOR VEHICLE ACCIDENTS				
Property Damage -----	1,144	722	503	2,369
Injury -----	259	256	142	657
Fatal -----	7	16	4	27
Total -----	1,410	994	649	3,053
TYPE OF ACCIDENT				
Motor Vehicle - Motor Vehicle ----	1,120	769	504	2,393
Motor Vehicle - Pedestrian -----	16	7	3	26
Motor Vehicle - Fixed Object ----	238	163	128	529
Other (Non Collision) -----	36	55	14	105
Total -----	1,410	994	649	3,053
PERSONS KILLED & INJURED				
Persons Killed (Non Pedestrian) ---	8	18	4	30
Pedestrians Killed -----		2		2
Persons Injured (Non Pedestrian) --	342	440	213	995
Pedestrians Injured -----	17	5	3	25
Total Killed -----	8	20	4	32
Total Injured -----	359	445	216	1,020

AGES OF OPERATORS INVOLVED

AREA	18-20	21-24	25-29	30-34	35-39	40-44	45-49	50-54	55-59	60 & Over	Unk.	TOTAL
D.C.												
Male ---	188	303	363	254	215	188	160	139	85	118	29	2,042
Female -	59	91	86	40	45	55	47	23	31	37	0	514
MD.												
Male ---	147	300	269	152	147	110	117	67	55	68	6	1,438
Female -	45	106	72	43	25	37	25	23	16	15	0	407
VA.												
Male ---	126	157	135	90	94	80	87	45	29	44	6	893
Female -	37	50	43	26	29	28	17	26	13	10	0	279
TOTAL												
Male ---	461	760	767	496	456	378	364	251	169	230	41	4,373
Female -	141	247	201	109	99	120	89	72	60	62	0	1,200
TOTAL ---	602	1,007	968	605	555	498	453	323	229	292	41	5,573

TRAFFIC ACCIDENTS
by
MONTH, DAY OF WEEK & HOUR

CLASSIFICATION	JAN	FEB	MAR	APR	MAY	JUNE	JULY	AUG	SEPT	OCT	NOV	DEC	TOTAL
Property Damage Accidents -----	181	153	191	191	250	182	178	200	181	221	231	210	2,369
Personal Injury Accidents -----	42	45	47	43	68	71	45	66	53	50	73	54	657
Fatal Accidents -----	1	4	2	2	2	2		3	5	1	3	2	27
Total	224	202	240	236	320	255	223	269	239	272	307	266	3,053

Day of Week	District of Columbia	Percent	State of Virginia	Percent	State of Maryland	Percent	Total	Percent
Monday -----	179	13%	86	13%	178	18%	443	15%
Tuesday -----	198	14%	94	15%	151	15%	443	15%
Wednesday ---	224	16%	83	13%	127	13%	434	14%
Thursday-----	183	13%	80	12%	86	9%	349	11%
Friday -----	206	14%	107	16%	103	10%	416	14%
Saturday ----	221	16%	102	16%	171	17%	494	16%
Sunday -----	199	14%	97	15%	178	18%	474	15%
TOTAL	1,410	100%	649	100%	994	100%	3,053	100%

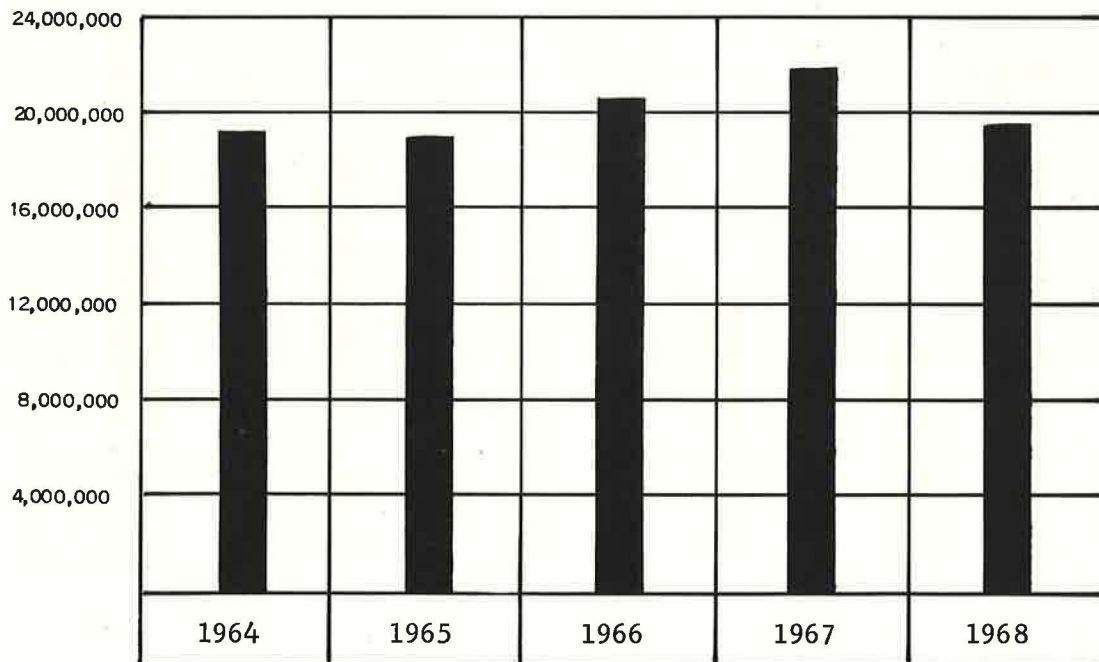
	Total	A.M. Hours	P.M. Hours
12 To 1 -----	211	111	100
1 To 2 -----	230	107	123
2 To 3 -----	255	124	131
3 To 4 -----	253	69	184
4 To 5 -----	256	32	224
5 To 6 -----	327	30	297
6 To 7 -----	257	55	202
7 To 8 -----	289	159	130
8 To 9 -----	311	203	108
9 To 10 -----	235	121	114
10 To 11 -----	206	90	116
11 To 12 -----	223	101	122
Total	3,053	1,202	1,851



Ice Skating On The C & O Canal

VISITATION

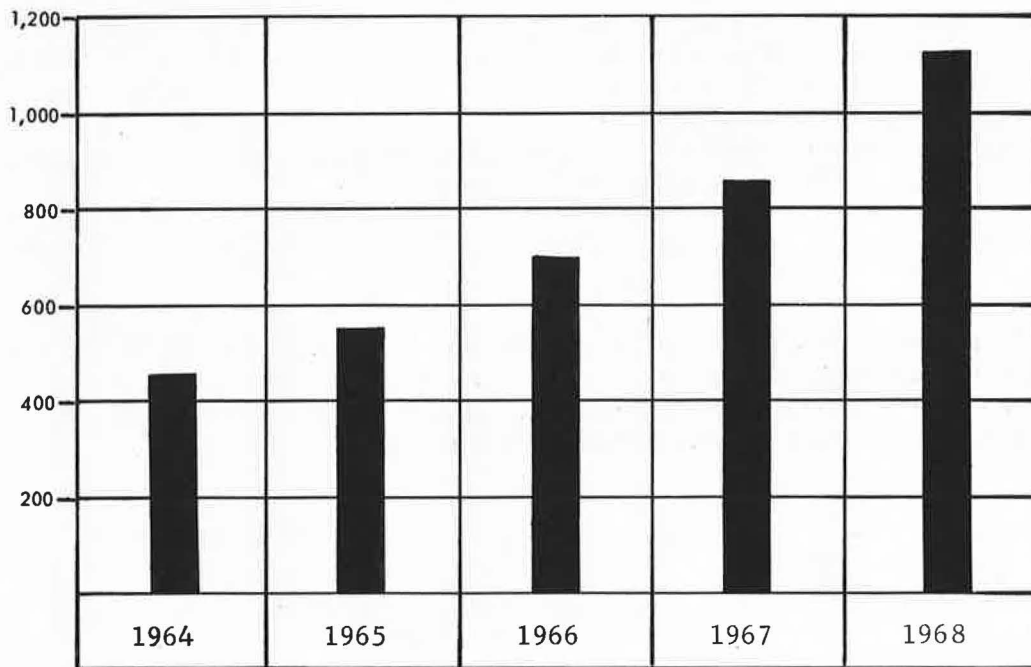
National Capital Parks - Central	2,973,806
National Capital Parks - North	1,087,059
National Capital Parks - East	774,665
Greenbelt Park	737,505
C & O Canal (Overall Use)	1,565,343
George Washington Memorial Pkwy.	3,866,302
Lincoln Memorial	3,479,054
Washington Monument	1,607,813
Jefferson Memorial	1,088,782
Custis-Lee Mansion	269,349
White House	1,154,887
Ford Theatre	433,939
House Where Lincoln Died	287,306
Total Visitation	19,325,810



SPECIAL OCCASIONS AND EVENTS

The United States Park Police handled 1,125 Special Events during 1968. This was the largest number of events ever recorded, however the attendance at these events showed a significant decrease. As indicated on page 2 of this report, the decline in visitation may be attributed to civil disorders and cancellation of some of the larger events in the spring of 1968. A total of 5,027 individual assignments were made, and accounted for a total of 23,415 man hours of which 11,137 hours were overtime.

FIVE YEAR COMPARISON OF SPECIAL EVENTS



AREAS PATROLLED BY THE UNITED STATES PARK POLICE

	ACRES	RESERVATIONS	MILES OF ROAD	MILES OF TRAIL
DISTRICT OF COLUMBIA -----	7,710	739	101	138
MARYLAND-----	17,309	9	81	25
VIRGINIA-----	3,672	7	53	12
TOTAL-----	*28,691	755	235	275

The United States Park Police are charged with the usual responsibilities for the preservation of peace, the protection of life and property, the prevention and detection of crime, and for the apprehension of violators of laws and regulations. By virtue of their jurisdictional authority the Park Police administer and enforce, not only the laws and statutes of the Federal Government within the geographical confines of the District of Columbia, but also enforce the applicable regulations on certain federally owned areas in the states of Maryland and Virginia.

The United States Park Police is one of the major law enforcement operations within the National Park Service. There are six parkways and more than 700 parks throughout the District of Columbia, Maryland and Virginia, comprising an area of more than 28,000 acres under the jurisdiction of the U. S. Park Police. In addition to the parks and parkways, the U. S. Park Police has been placed with the responsibility of providing police service to Arlington National Cemetery, National Agricultural Research Center, Patuxent Wildlife Refuge and Food and Drug Administration in Beltsville, Maryland

*These figures do not include areas in the National Capital Region which are not patrolled by the United States Park Police, such as: Catoclin, and that portion of the C & O Canal north of Seneca, in the State of Maryland, or Prince William Forest Park in the State of Virginia

