



UNITED STATES PARK POLICE

**ANNUAL REPORT
1973**



WASHINGTON, D. C.





Table of Contents

Page No.

SECTION I

Statistical Highlights	4
Memorandum to the Director, NCP	5
Personnel Status Report	7
Organization Divisions	
Security and Protection, NPS	8
Office of the Chief	9
Services	10
Operations	23

SECTION II

Force Activity Report	31
Part I Offenses	32
Part II Offenses	35
Juvenile Report	37
Service Incidents Report	38
Motor Vehicle Accident Summary	39
Special Events and Public Gatherings	45

SECTION III

Awards	51
Major Goals and Objectives, 1974	55



Jerry L. Wells, Chief of Police



Franklin A. Arthur, Deputy Chief of Police



United States Department of the Interior

NATIONAL PARK SERVICE
OFFICE OF NATIONAL CAPITAL PARKS
HEADQUARTERS, UNITED STATES PARK POLICE
1100 OHIO DRIVE SW.
WASHINGTON, D.C. 20242

IN REPLY REFER TO:

Memorandum

To: Director, National Capital Parks

From: Chief, United States Park Police

Subject: Annual Report

This report summarizes the activities and accomplishments of the United States Park Police during 1973 in meeting the established objectives of our mission and in carrying out our law enforcement responsibilities to the National Park Service and its visitors.

The United States Park Police completed 1973 with a complement of 543 employees. The Force employed 470 police officers, who were augmented by 41 uniformed members of the guard force and 32 civilian employees. The 39 additional police personnel employed by the Force in 1973 each contributed to our continued efforts to provide the public with the highest degree of professional service possible.

The year 1973, saw a continued increase in the number of citizens utilizing the National Capital Parks. The number of special events and demonstrations serviced by members of this Force decreased during 1973, however, this decrease did not cause any corresponding decrease in the level of services provided to the public, and this report cannot convey the amount of effort and the dedication exhibited by the members of this Force in carrying out their responsibilities, very often under trying circumstances. The services of members of this Force were requested in nine other areas of the National Park Service in an ongoing effort to assist these areas with their law enforcement problems.

In order to provide the public with professional police service, it has been necessary for this Force to employ the latest law enforcement techniques and equipment to combat crime and to make optimum utilization of existing manpower through careful planning.

Serious crimes investigated by the Force in 1973 increased, with some 1,187 Part I Offenses occurring within the National Capital Parks. This figure represents an increase of 262 Part I Offenses and is being closely studied in an effort to reduce this figure during 1974. Part II Offenses decreased with 5,994 offenses of this type being reported and investigated. A total of 3,635 motor vehicle accidents were investigated by the Force. Although the total number of motor vehicle accidents investigated during 1973 decreased, the number of motor vehicle fatalities increased. Fatality accidents investigated increased from 19 in 1972 to 26 during 1973. Selective enforcement activity have been increased in those park areas which have shown an increase in the frequency rate of motor vehicle fatalities.

Ongoing in-service training programs and other specialized training programs designed to assure that Force members stay abreast of the latest law enforcement techniques and court decisions accounted for 77,526 man-hours during 1973. It is felt that the man-hours spent in these programs will provide members of the Force with the expertise that is necessary to combat crime and to better serve the public.

On September 15, 1973, an historic first for the United States Park Police occurred when "Eagle I," a Bell Jet Ranger II type helicopter, went into service. "Eagle I" was acquired by the Force in an effort to improve our patrol capabilities and to provide the public with the fastest possible emergency service. This helicopter provided airborne ambulatory service to accident victims, has cargo carrying capability, and is equipped with a 3.8 million candlepower night-sun searchlight. Members of the Aviation Section have participated in the successful rescue of seven persons from the Potomac River, transported nine motor vehicle accident victims to the Baltimore City Trauma Center for emergency treatment, and made five emergency human organ transports during 1973.

On numerous occasions "Eagle I" also participated in searches for lost persons and for fugitives from justice, providing this Force and other law enforcement agencies requesting these services with invaluable airborne reconnaissance.

The year 1973 saw many new innovations, changes, and roles for the members of the United States Park Police. We have constantly sought to improve our service to the public, in meeting the goals and objectives of the Service and the Force, and are hopeful that your continued support will enable us to be even more successful.

Jerry L Wells

SECTION I

Statistical Highlights

Memorandum to the Director, NCP

Personnel Status Report

Organization Divisions

Security and Protection, NPS
Office of the Chief
Services
Operations

HIGHLIGHTS	1972	1973	INCREASE	DECREASE
TOTAL ALL ARRESTS -----	74,724	73,105		1,619
Adults Arrested -----	74,117	72,311		1,806
Juveniles Apprehended -----	607	794	187	
TOTAL ARRESTS for PART I CLASSES ----	274	427	153	
Adults Arrested -----	129	201	72	
Juveniles Apprehended -----	145	226	81	
TOTAL ARRESTS for PART II CLASSES ---	1,943	1,753		190
Adults Arrested -----	1,555	1,284		271
Juveniles Apprehended -----	388	469	81	
TOTAL TRAFFIC ARRESTS -----	72,507	70,925		1,582
Adults Arrested -----	72,433	70,826		1,607
Juveniles Apprehended -----	74	99	25	
TOTAL TRAFFIC CHARGES -----	72,507	70,925		1,582
Adult Violators -----	72,433	70,826		1,607
Moving -----	32,011	31,399		612
Parking -----	40,422	39,427		995
Juvenile Violators -----	74	99	25	
Moving -----	74	99	25	
Parking -----				
TOTAL MAJOR OFFENSES REPORTED -----	923	1,204	281	
Deduct Offenses Unfounded -----	8	17	9	
ACTUAL MAJOR OFFENSES -----	915	1,187	272	
TOTAL MAJOR OFFENSES SOLVED -----	184	169	15	
AUTOMOBILES STOLEN -----	28	43	15	
AUTOMOBILES RECOVERED -----	27	34	7	
AUTOMOBILES RECOVERED for other JURISDICTIONS -----	176	122		54
TOTAL TRAFFIC ACCIDENTS -----	3,696	3,635		61
Fatal Accidents -----	19	26	7	
Injury Accidents -----	586	551		35
Property Damage Accidents Only -	3,091	3,058		33
TOTAL TRAFFIC DEATHS -----	22	26	4	
Non-Pedestrian -----	19	21		2
Pedestrian -----	3	5		2
TOTAL TRAFFIC INJURIES -----	940	551		389
Non-Pedestrian -----	901	528		373
Pedestrian -----	39	23		16

PERSONNEL STATUS FOR 1973

PERSONNEL DISTRIBUTION AS OF DECEMBER 31, 1973				
<u>DIVISION</u>	<u>POLICEMEN</u>	<u>GUARDS</u>	<u>GIVILIANS</u>	<u>TOTAL</u>
Office of the Chief	21		4	25
Services	50		17	67
Other Regions	7			7
Operations:				
a. Uniformed	371	41	10	422
b. Plainclothes	21		1	22
TOTAL	*470	**41	***32	543

CHANGES IN POLICE PERSONNEL	
1. Present for duty end of 1973 -----	457
2. Recruited during 1973 -----	39
Total to account for -----	496
3. Separated from the Force:	
a. Voluntary Resignation -----	16
b. Retirement on Pension -----	9
c. Deaths -----	1
Total Separations -----	26
4. Present for Duty End of 1973 -----	470

*Includes one officer on Military Furlough, 7 Force members assigned to and funded by other Regions of the National Park Service, 6 Force members of the Services Division on detail to the Consolidated Federal Law Enforcement Training Center.

**Includes 3 Guards hired on temporary appointments.

***Includes 3 Civilian employees hired on temporary appointments.

DIVISION OF PROTECTION AND SECURITY

NATIONAL PARK SERVICE



Inspector Parker T. Hill
Chief, Division of Protection and Security
National Park Service

Captain Lynn H. Herring
Western Region

Lieutenant James P. Turner
Midwest Region

Lieutenant Bobbie W. Huffman
Northeast Region

Lieutenant Charles R. Stebbins
Southwest Region

Captain James C. Lindsey
Pacific Northwest Region

Captain George W. Winkel, Jr.
Southeast Region

OFFICE OF THE CHIEF



Inspector Walter R. McEwen
Commander, Inspections and Planning

Inspections and Planning

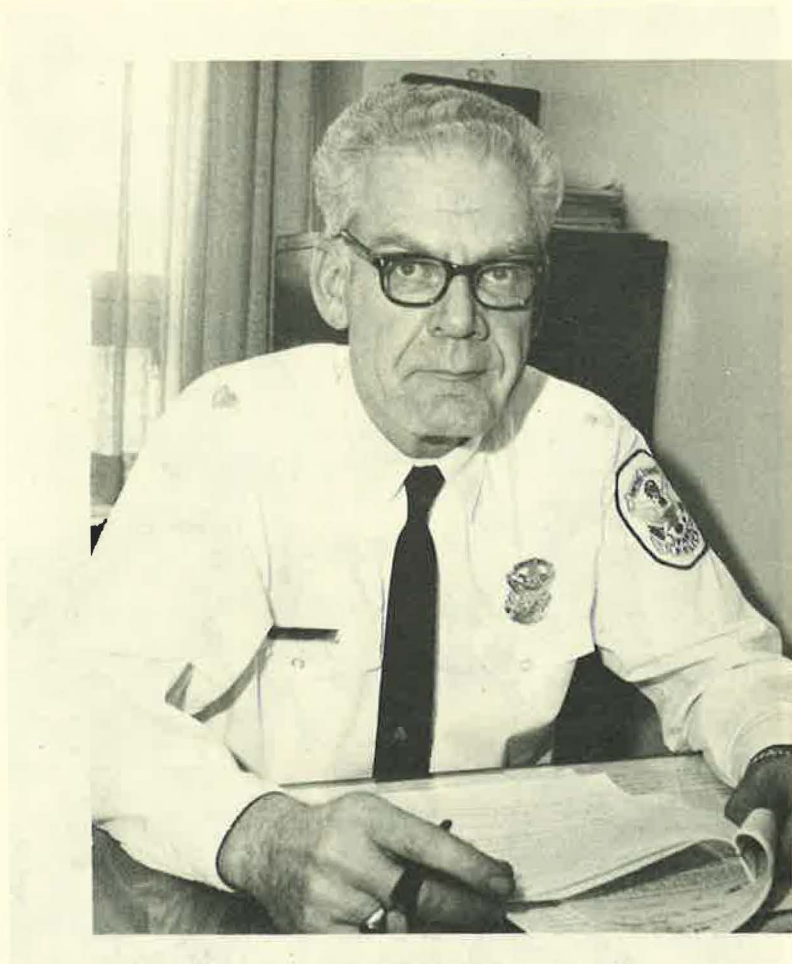
Watch Commanders

Office Staff

21 Policemen

4 Civilians

SERVICES DIVISION



Inspector Roland A. Fallin
Commander, Services Division

Administrative Services

Training Section

Personnel Services

Property Section

Data Processing &
Fiscal Affairs

Technical Services

Records Section

Communications

Photography Lab

Transportation

50 Policemen 17 Civilians

ADMINISTRATIVE SERVICES



Captain Edward H. Henley
Commander, Administrative Services Branch

Training Section

Personnel Services

Data Processing &
Fiscal Affairs

ADMINISTRATIVE SERVICES BRANCH

This Branch is comprised of three sections, the Training Section, the Personnel Section, and the Fiscal Affairs Section. The basic functions of the Administrative Services Branch include, budget and fiscal management purchasing, payroll, recruitment, personnel actions, training, and statistical compilation.



Georgia L. Golden



Grace H. Rowe

Training Section

During calendar year 1973, Force members attended training a total of 1,115 times for a grand total of 77,526 man-hours in various law enforcement subjects, at a cost of approximately \$40,000 excluding training staff salaries.

In addition, over 150 Force members were enrolled in law enforcement degree programs at various universities in the National Capital area. These courses were funded primarily through the Law Enforcement Assistance Administration, the Veterans Administration, and the individual officer. Five courses were funded by the Force. Approximately 12% of the Officers of the United States Park Police now hold Bachelor of Science Degrees, primarily in the Police Science/Administration of Justice Field.

SPECIALIZED TRAINING

<u>COURSE</u>	<u>NUMBER ATTENDED</u>
Basic Police Recruit Training	44
Recruit Specialized	44
FBI National Academy	4
FBI National Academy Retraining	4
Northwestern University Supervision/Command	24
Introduction to Supervision	13
Supervision and Group Performance	7
Traffic Accident Investigation Course	154
First Aid Refresher	47
Emergency Medical Technician Course	8
Breathalyzer Training	36
Narcotics Investigators Course	22
Narcotics Course for Uniformed Police Officers	61
Helicopter Training (several courses)	3
Criminal Investigator Training	3
Homicide Investigator Training	6
Sex Crimes Course	2
Forensic Pathology	2
Advanced Crime Photography	4
Bomb Control Seminar	2
Bomb Investigators Course	4
Anti-Sniper Training	7
SEADOC Crowd Control Training	7
Protective Operations Seminar	3
Crime Prevention Theory	1
Managerial Grid I	1
Patrol Management Seminar	5
Police Intelligence Management	2

Budget Formulation	2
Labor Relations	2
Adverse Actions	3
Police/Press Relations	1
Personnel Management Techniques for Supervisors	3
Management of Police Training	2
Police/Community Relations	1
Police/Prosecutor Relations	2
Writing Regulations and Procedures for Public Understanding	5
Time Management for Managers	2
EEO Counselor Workshop	7
Guard Training	8
Federal Womens Program	1
Bicycle Training	10



In-Service Training

All personnel below the rank of Captain are required to attend the "In-Service Training Program." This program consists of training in firearms, vehicle operation, legal topics and Force policy and procedures. This is a two day program presented three times annually with changing topics as need dictates. In 1973, 11,024 man-hours of In-Service Training was received by officers of the U.S. Park Police.



Field Officers Training Program FTO

This is a coach/pupil program designed to provide actual on the job training in "real world" situations for recruits who have completed the Basic Police School at the Consolidated Federal Law Enforcement Training Center and the U.S. Park Police Specialized Recruit Training Program.

Each recruit is assigned to an experienced officer, who has been specially selected and trained in basic coach/pupil principles to enhance and ensure training experience for the recruit. Proper procedures, patrol techniques, documentation of evidence, reports and case preparation are the main areas of concentration in this program.

The recruit remains in this program for a minimum of four weeks, and after successful completion of field training he is allowed to perform police tasks alone.

Personnel

The Force completed the 1973 year maintaining near full compliment. Our recruitment effort was extended to presentations at various universities, colleges and other institutions. Emphasis was given to recruiting minorities and women. In all, 1,669 employment inquiries were received.



Fiscal Affairs and
Data Processing Section

Beginning July 1973, a new computerized cost accounting system was implemented through the National Park Service making it possible to obtain monthly cost reports of the various categories of Force operations. During this year, the U.S. Park Police were involved in the National Park Service Uniform Reporting System. This system provides monthly and annual statistical reports of all categories of Force activities.



Officer William G. Siebert

TECHNICAL SERVICES



Captain Edward A. Haralson
Commander, Technical Services

Records Section

Communications

Photography Lab

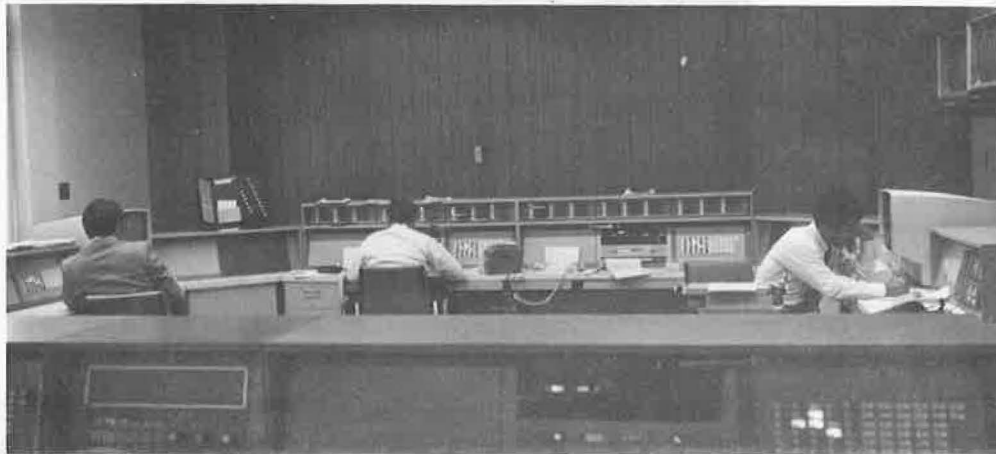
Transportation

Property Section

TECHNICAL SERVICES BRANCH

Throughout the year, the Technical Services Branch provides logistical support, communications, photographic services, records management and property management for the various units of the Force.

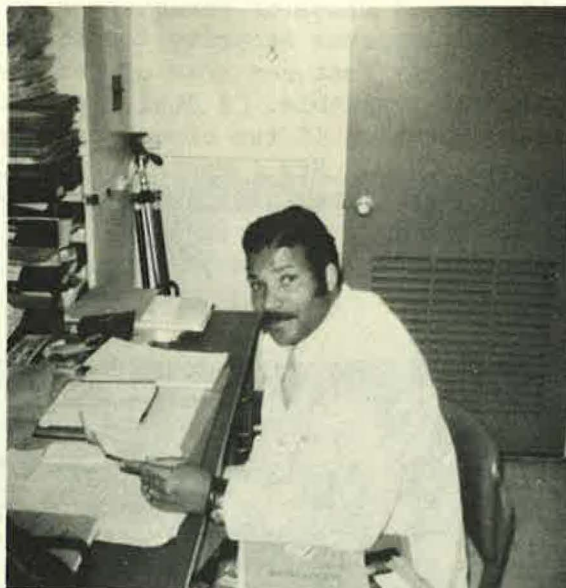
Using the latest technology, a new Dispatch Control Center was designed and installed on the second floor of Headquarters. The new location provides more space and improves security for this vital law enforcement function. The new facility features some of the most up to date communications equipment available. A dual frequency radio system permits simultaneous operation of two communications activities without interference with each other. New computer terminals and video displays speed response to field inquiries. Closed circuit television constantly monitors Headquarters for improved security. Color slide displays give the dispatcher a graphic presentation of patrolled areas to improve the direction of field units.



The Records Section was moved into larger quarters in the area vacated by the Communications Section to cope with the increased workload generated by Force expansion and a revision of the reporting system. A scheduled mail delivery service manned by a new civilian employee was inaugurated to relieve uniformed officers of the task and permit more time for law enforcement activities.



To meet the increased demand for services, the Force Photographic Lab was enlarged. In addition to his picture taking and processing assignments, the Force Photographer provides training for members and helps evaluate new equipment to meet the needs of the Force.



Herman B. Gaines

In cooperation with the U.S. Department of Transportation, the Force became the first law enforcement agency in the nation to utilize vehicles equipped with an Air Cushion Restraint System. On April 21, 1973, at about 2:30 a.m., a member of the Force made history when he became the first police officer to experience a "real world" deployment of the air cushion. While on patrol in Rock Creek Park, the officer's cruiser was struck in the front by an oncoming vehicle. His comment: "It works!"



During the summer months, law enforcement emergencies in Rocky Mountain and Zion National Parks required the movement of Force motorcycles to the parks for use by members of the Special Operations Force. Technical Services personnel and the supervisor of Vehicle Operations made arrangements for a vehicle and special equipment for the trips and drove the vehicle to the assignment. The motorcycles arrived on schedule and in good condition. Both assignments were performed as planned and without technical difficulty.



The Vehicle Maintenance Section coordinated the myriad of activities necessary to keep the increasing fleet of law enforcement and support vehicles in service on a 24 hour basis. To meet the requirements of the DOT program, it was necessary to design and fabricate special equipment for the Air Cushion vehicles.



In addition to its routine duties, the Property Section assisted in securing several new items for the Force. Among these were bicycles, new style ties and tie tacs, new style all weather jackets for selected units, paratrooper boots for scooter personnel and slack/blazer outfits for members of the staff and Kennedy Center personnel.



OPERATIONS DIVISION



Inspector Paul F. Burgus
Commander, Operations Division

5 Substations

21 Criminal Investigators

67 Special Operations Force

41 Uniform Guards

11 Civilians .



Captain Denny R. Sorah
Commander, Patrol Branch

SUBSTATIONS

Potomac Park
George Washington
Memorial Parkway
Rock Creek Park
Greenbelt Park
Anacostia Park
Uniform Guards



Captain Hugh A. Groves
Commander, Special Operations Force

67 Policemen



Captain James P. Deely
Commander, Criminal Investigations Branch

21 Investigators
1 Civilian

OPERATIONS DIVISION

The Operations Division comprises the greatest single resource of manpower on the United States Park Police. The Division is staffed with a total of 443 employees of which 392 are law enforcement officers. These officers are committed to providing public service and protection for visitors to the National Capital Parks. Operations Division is decentralized into five substations located throughout the Washington Metropolitan Area. These substations are supported by a Special Operations Force which is primarily responsive to selective programs such as special events, public gatherings and augmenting or providing law enforcement assistance for necessary National Park Service assignments.

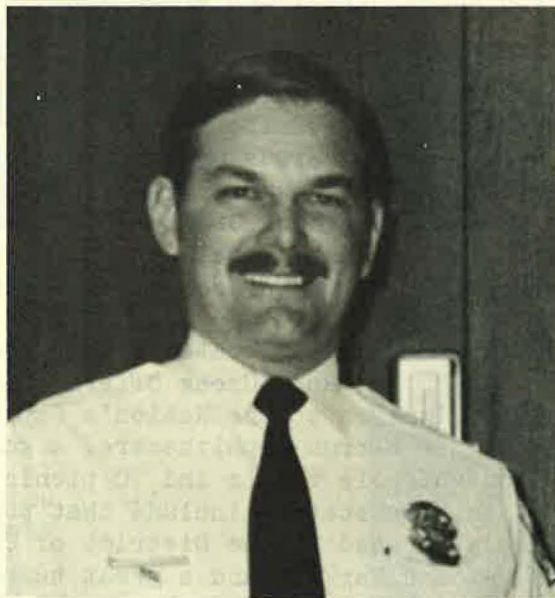
The Special Operations Force and the Potomac Park Substation are both temporarily located in Tempo A, Wing 1 of a government complex near the Buzzard's Point Boat Marina in Southwest Washington, D.C. This locale permits ready access to most areas located within the geographical boundaries of the substation. Areas of patrol and responsibility include such attractions as the Washington Monument, White House, Lincoln and Jefferson Memorials, and the John F. Kennedy Center for the Performing Arts. Potomac Park is also the site of such renowned events as the National Cherry Blossoms, National Folklife Festival, National Independence Day Celebration, and the annual President's Cup Regatta Boat Race.

The George Washington Memorial Parkway Substation is located in Glen Echo, Maryland. Officers assigned to this unit are primarily responsible for the protection and security of visitors and resources within portions of nearby Maryland and Virginia. Areas of greatest concern are the Chesapeake and Ohio Canal north to Seneca, Maryland, Wolf Trap Farm, George Washington's Homesite in Mount Vernon, Virginia, Great Falls Park, the Iwo Jima Memorial and many other historical sites, as well as, numerous recreation areas located along the heavily travelled George Washington Memorial Parkway.

The Rock Creek Park Substation is located within the largest park land in the city of Washington, D.C. Rock Creek offers 1,754 acres of recreation area to residents and visitors to the Nation's Capital. The park has a Nature Center, the Carter Barron Amphitheatre, a golf course, 14 miles of bridle trail, numerous bicycle trails and 70 picnic groves. Patrol responsibilities of this substation include that portion of the Chesapeake and Ohio Canal that is located in the District of Columbia, a portion of the Rock Creek and Potomac Parkway and a great number of smaller parks and reservations located throughout the northeast and northwest sections of the city.

Greenbelt Substation, located in Greenbelt, Maryland, is primarily responsible for the safety and security of motorist travelling on the federal owned portion of the Baltimore-Washington Parkway. Other properties of major concern are Greenbelt Park and Campgrounds and certain parcels of land administered to by the Department of Agriculture. Substation personnel are also responsive to request for assistance to the Children's Detention Center located adjacent to the Baltimore-Washington Parkway.

Anacostia Substation is located in Anacostia Park in Southeast Washington, D.C. This substation is accessible to local communities and has strong influence with the neighboring youth. The park has numerous activities geared to attract young people and is the site of countless community programs. Substation personnel have been very responsive to community needs. Other areas of concern are Fort Washington, the Aquatic Gardens, Fort Dupont Park, the Children's Farm and that portion of the Suitland Parkway in Prince George's County, Maryland.



Lieutenant William W. McQueeney
Commander, Potomac Park Substation

GEORGE WASHINGTON MEMORIAL PARKWAY SUBSTATION



Commander, Lieutenant George R. McIntosh



G.W.M.P. Substation

ROCK CREEK SUBSTATION



Commander, Lieutenant William L. Lanham

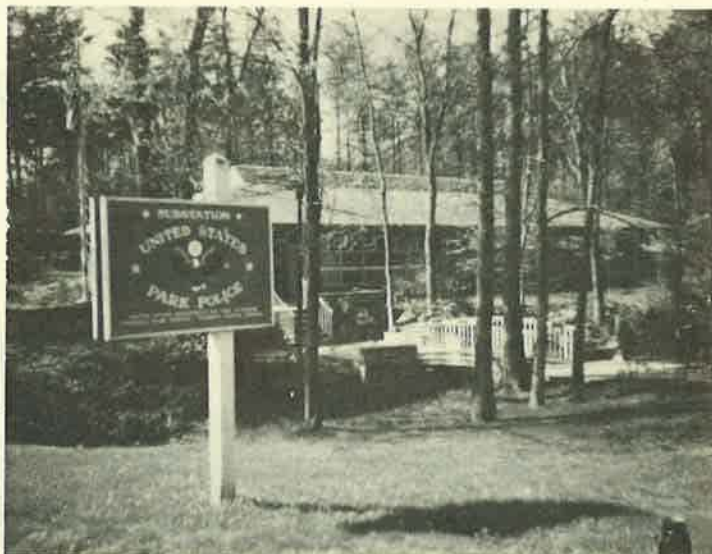


Rock Creek Substation

GREENBELT SUBSTATION



Commander, Lieutenant Richard A. Valentine



Greenbelt Substation

ANACOSTIA SUBSTATION



Commander, Lieutenant Earl H. Lee



Anacostia Substation

SECTION II

Force Activity Report

Part I Offenses

Part II Offenses

Juvenile Report

Service Incidents Report

Motor Vehicle Accident Summary

Special Events and Public Gatherings

UNITED STATES PARK POLICE FORCE ACTIVITY REPORT

1973

YEAR

ACTIVITIES	OFFICE OF THE CHIEF		OPERATIONS DIVISION				SERVICES DIVISION		FORCE TOTAL		
	POLICE	CIV.	UNIFORMED	C.I.B.	GUARD	CIV.	POLICE	CIV.	POLICE	GUARD	CIV.
Arrest Made	5		2346	86			10		2447		
Moving TVN's	1		37511	4					37516		
Non Moving	3		57663	9					57675		
Cases Assgn.	113		43902	1171			67		45253		
Courtesy Tgs	8		26400	7			2		26417		
HOURS WORKED											
Special Duty	3643	8	117708	4198	621	196	4504	257	130053	621	461
Court	1811	2	10907	1152			148		14018		2
Writing Rept.	1304	217	28488	4902	36		579	4	35273	36	221
Office Duty	20246	5430	99404	6884	2635	10954	64544	24912	191078	2635	41296
Other Duty	4438	227	31334	572	570	3283	2781	2715	39125	570	6225
Patrol	1783		303779	1396	75608		73		307031	75608	
Traf. Control	10		25540	24	7286		39		25613	7286	
Accid. Inves.	8	148	4793	317			53		5171		148
Crim. Inves.	299	2	4178	15167			109		19753		2
Other Inves.	256	175	4379	362			633	4	5630		179
Training	1448	426	79664	3919	750	82	17983	817	103014	750	1325
Vehic. Maint.	36		16657	169	16		505	3597	17367	16	3597
TOTAL HOURS	35282	6635	726831	39062	87522	14515	91915	32306	893126	87522	53456
HOURS OFF DUTY											
Day Off	15304	3232	306297	17280	35064	6920	40544	14659	379425	35064	24811
Annual Leave	2943	585	46958	3319	5145	1006	7512	2707	60732	5145	4298
Sick Leave	1547	549	39150	2076	3755	724	5595	1035	48368	3755	2308
Comp. Leave	562	14	17818	1280	617	138	1002	141	20662	617	293
Other Leave	1553	380	26811	1376	3652	1698	3915	1981	33655	3652	4059
TOTAL LEAVE	21909	4760	437034	25331	48233	10486	58568	20523	542842	48233	35769
HRS. O.T. PERF											
Compensatory	678	19	17973	1238	44	150	1033	140	20922	44	309
Monetary	1992	46	63066	2339	9631	312	6443	907	73840	9631	1265

PERSONS CHARGED

PART I OFFENSES	ADULT	JUVENILE	TOTAL
Murder -----	1		1
Manslaughter by Negligence -----	6		6
Rape -----	4	1	5
Robbery -----	25	51	76
Assault -----	47	40	87
Burglary -----	3	3	6
Larceny (Except Auto Theft)			
a. \$100 and over in value -----	8		8
b. Under \$100 in value -----	49	91	140
Auto Theft -----	58	40	98
TOTAL PART I	201	226	427
<u>PART II OFFENSES</u>			
Stolen Property (Buy. Rec.& Possess)--	18	4	22
Weapons -----	53	19	72
Sex Offenses -----	24	4	28
Narcotic Laws -----	87	68	155
Liquor Laws -----	88	13	101
Drunkenness -----	25	1	26
Disorderly Conduct -----	179	57	236
Driving Under Influence -----	573	8	581
Road and Driving Laws -----	27,563	41	27,604
Parking Violations -----	39,427		39,427
Traffic & Motor Vehicle Laws -----	3,836	58	3,894
Forgery & Counterfeiting -----	50		50
Vandalism -----	11	48	59
Embezzlement -----	1		1
All Other Offenses -----	172	201	373
Vagrancy -----	2		2
Suspicion -----	1	46	47
TOTAL PART II	72,110	568	72,678
GRAND TOTAL	72,311	794	73,105

COMPARISON OF
ACTUAL MAJOR OFFENSES

OFFENSES	1969	1970	1971	1972	1973
Murder -----	1	3	1	1	1
Negligent Manslaughter -----	2		1		1
Rape -----	46	26	40	45	40
Robbery -----	191	175	172	161	257
Assault -----	156	166	104	135	147
Burglary, Breaking & Entering ---	112	113	75	65	46
Larceny, Grand -----	176	149	143	141	*605
Larceny, Petit -----	630	635	430	339	63
Auto Theft -----	54	67	51	28	44
TOTAL	1,368	1,334	1,017	915	1,204

*Larceny reports for 1973 over \$50 in value were classified as Grand Larceny instead of Petit Larceny in compliance with guidelines set forth in the "Uniform Crime Reporting" handbook.

PART I OFFENSES REPORTED,
BY CLASSIFICATION

1 CLASSIFICATION OF OFFENSES (PART I CLASSES)	2 OFFENSES REPORTED OR KNOWN TO POLICE (INCLUDE "UNFOUNDED" AND ATTEMPTS)	3 UNFOUNDED, I.E., FALSE OR BASELESS COMPLAINTS	4 NUMBER OF ACTUAL OFFENSES (COLUMN 2 MINUS COLUMN 3) (INCLUDE ATTEMPTS)	5 NUMBER OF OFFENSES CLEARED BY ARREST THIS MONTH	
				a TOTAL OFFENSES CLEARED	b BY ARREST OF PERSONS UNDER 18 (INCLUDED IN 5a)
1. CRIMINAL HOMICIDE					
a. MURDER AND NONNEGLIGENT MANSLAUGHTER	1		1	1	
b. MANSLAUGHTER BY NEGLIGENCE	1		1		
2. FORCIBLE RAPE TOTAL	40	3	37	9	
a. RAPE BY FORCE	32	3	29	4	
b. ASSAULT TO RAPE - ATTEMPTS	8		8	5	
3. ROBBERY TOTAL	257	1	256	38	8
a. ARMED - ANY WEAPON	64		64	7	1
b. STRONG-ARM - NO WEAPON	193	1	192	31	7
4. ASSAULT TOTAL	147	3	144	53	7
a. GUN	27		27	10	1
b. KNIFE OR CUTTING INSTRUMENT	15		15	4	
c. OTHER DANGEROUS WEAPON	24	1	23	9	1
d. HANDS, FISTS, FEET, ETC. - AGGRAVATED	72	2	70	27	3
e. OTHER ASSAULTS - NOT AGGRAVATED	9		9	3	2
5. BURGLARY TOTAL	46		46	4	2
a. FORCIBLE ENTRY	33		33	1	
b. UNLAWFUL ENTRY - NO FORCE	11		11	3	2
c. ATTEMPTED FORCIBLE ENTRY	2		2		
6. LARCENY - THEFT (EXCEPT AUTO THEFT)					
a. \$50 AND OVER IN VALUE	605	9	596	57	16
b. UNDER \$50 IN VALUE	63		63	3	1
7. AUTO THEFT	44	1	43	4	2
GRAND TOTAL	1,204	17	1,187	169	36

PART I OFFENSES REPORTED,
BY MONTH & LOCATION

LOCATION	JAN	FEB	MAR	APR	MAY	JUN	JUL	AUG	SEP	OCT	NOV	DEC	TOTAL
AGRIC. RESEARCH CNTR	5				2	2	2	2		2	4	3	22
ANACOSTIA PARK	1	1	2	7	3	7	14	16	6	4		1	62
ARLINGTON CEMETERY										1	1		2
CITY STREETS, MD.				2	1	1		2	4		2	1	13
BALTIMORE-WASH. PKWY	1	1	3	2	3	4	3	4	4	1	1	4	31
C & O CANAL, D.C.			1	2	3	6	4	1	1	1		1	20
CITY STREETS, D.C.	2	1		2			3	3		3	1	2	17
CITY STREETS, VA.										1			1
COLUMBIA ISLAND		1			2	2	2		1	1	3	1	13
CONSTITUTION AVENUE					1	1	1	3				1	7
C & O CANAL, MD.				2	3		2			1		1	9
DELAWARE WATER GAP													
DUPONT CIRCLE	1				1	1		2		1			6
EAST POTOMAC PARK	1	1	2	7	5	6	6	11	4	9	1	2	55
ELLIPSE	2		1	3	2	4	4	3	4	3	2	6	34
FORT DUPONT			1		2	4	8	2		2		2	21
FORT FOOTE, MD.		1	2										3
FORT HUNT, VA.					4	3		1	2	3	1		14
FORT WASHINGTON, MD.		1	3		4		3		1	4	1		17
FRANKLIN PARK			1			4	4	4	3		1		17
GARFIELD, MAR.& FOL.													
J.F.K. CENTER	4	3	4	2	6	6	2	2	3	3	4	1	40
GREAT FALLS, MD.			2	1	2			1					6
GREAT FALLS, VA.			1	6	1	2	1				1	1	13
GREENBELT PARK			1		1	1	2	1			3		9
G.W.M.P., D.C.													
G.W.M.P., MD.	3		2	1		2		1	1	1	1		12
G.W.M.P., VA.	8	2	6	4	4	8	11	3	5	8	2	2	63
JONES POINT, VA.		1						1	1				3
JUDICIARY SQUARE													
LAFAYETTE PARK						1			1				2
LINCOLN PARK						1		1	1				3
MALL	4	4	11	24	14	31	32	27	12	6	5	4	174
MERIDIAN HILL	1				4	6	7	7	5		2	1	33
MONTROSE PARK	1						1	1		1			4
MONUMENT GROUNDS		1	2	9	7	7	31	15	6	6		1	85
MT. VERNON SQUARE							1						1
PALISADES													
PISCATAWAY, MD.						1							1
RESERVATIONS EAST	1	2	4	2	4	10	9	5		1	2	1	41
RESERVATIONS WEST	1	2	1	1			11	5	3	1	3	5	33
R.F.K. STADIUM			3	1	1	36	4	3	5	5		4	62
ROCK CREEK PARK	1	1	4	7	16	18	25	23	8	5	3	1	112
ROCK CREEK PARKWAY	1	1	2	8	7	10	5	5	1	2		1	43
ROOSEVELT ISLAND						1							1
STATUE LIBERTY, N.Y.													
STANTON PARK													
SUITLAND PARKWAY, Md.			1		2		1	1	1		2		8
WEST POTOMAC PARK		2	2	4	7	14	29	11	3	7	3	2	84
WOLF TRAP FARM, VA.					1	1	2	1			2		7
TOTAL	38	26	62	97	113	201	230	168	86	83	51	49	1,204
UNFOUNDED	1		1	2	1	2			2		1	7	17
GRAND TOTAL	37	26	61	95	112	199	230	168	84	83	50	42	1,187

PART II OFFENSES REPORTED
BY CLASSIFICATION

CLASSIFICATION	D.C.	MD.	VA.	TOTAL
Arson -----				
Vandalism -----	340	139	62	541
Stolen Property -----	9	2	2	13
Weapons -----	37	30	20	87
Sex Offenses (Other than Rape)-	21	6	4	31
Narcotic and Drug Laws -----	33	18	19	70
Liquor Laws -----	2	15	6	23
Drunkenness -----	296	34	15	345
Disorderly -----	192	36	29	257
Vagrancy -----		2		2
Gambling -----	2			2
Driving Under Influence -----	111	282	94	487
Road and Driving Violations ---	913	530	131	1,574
Parking Violations -----	507	35	23	565
Suspicious Persons -----	581	200	102	883
All Other Offenses -----	440	235	44	719
Prostitution -----	236	133	26	395
TOTAL	3,720	1,697	577	5,994

SERVICE INCIDENTS REPORTED, BY CLASSIFICATION

CLASSIFICATION	D.C.	MD.	VA.	TOTAL
Abandoned & Impounded Autos----	491	358	155	1,004
Animals and Wildlife -----	184	280	33	497
Assist to Citizens -----	5,152	4,389	2,220	11,761
Assist to Other Departments ---	3,177	943	331	4,451
Bomb Threats -----	14	3	1	18
Deaths -----	21		2	23
Disaster -----				
Unsecured Installations -----	650	434	98	1,182
Damage Govt. Property (Non-Malicious only)-----	54	17	12	83
Fires -----	111	70	20	201
Hazardous Conditions -----	300	131	93	524
Athletic -----	14	1		15
Park Maintenance Needed-----	2,305	1,178	337	3,820
Permits -----	2	2		4
Personnel -----	414	68	30	512
Persons Missing & Found -----	199	17	6	222
Police Services -----	6,936	1,357	863	9,156
Property Lost and Found -----	2,746	143	192	3,081
Sick and Injured -----	543	114	78	735
Suicides -----	23	4	1	28
TOTAL	23,336	9,509	4,472	37,317

PART II OFFENSES REPORTED,
BY MONTH & LOCATION

LOCATION	JAN	FEB	MAR	APR	MAY	JUN	JUL	AUG	SEP	OCT	NOV	DEC	TOTAL
AGRIC. RESEARCH CNTR	5	2	5	6	11	16	10	20	12	8	21	6	122
ANACOSTIA PARK	3	8	17	15	33	39	44	37	26	15	11	8	256
ARLINGTON CEMETERY			2	1	.1	1	1	2	2				10
SUITLAND PARKWAY, MD.	24	24	26	28	31	27	22	32	35	26	29	28	332
BALTIMORE-WASH. PKWY	64	76	81	59	62	78	77	81	102	105	123	106	1,014
C & O CANAL, D.C.	4	1	2	2	4	3	1	1	1				19
CITY STREETS, D.C.	55	55	49	45	45	21	50	31	37	44	63	51	546
CATOCTIN						11		1					12
COLUMBIA ISLAND	5	3	5	6	5	2	5	3	4	6	1	3	48
CONSTITUTION AVENUE	21	13	11	18	20	18	16	19	28	24	21	17	226
C & O CANAL, MD.	3	2	2		3		1		4		1		16
DELAWARE WATER GAP													
DUPONT CIRCLE		1	5		1	2	2	9	8	5	4	2	39
EAST POTOMAC PARK	8	6	6	10	10	16	18	21	11	22	10	10	148
ELLIPSE	11	8	7	10	12	24	20	17	9	8	9	15	150
FORT DUPONT	6	4	8	4	13	9	10	23	11	23	27	13	151
FORT FOOTE, MD.	2	1	3	5	2		1	1	4	3	5	2	29
FORT HUNT, VA.	1	2	2	3	12	7	4	3	3	5	2	2	46
FORT WASHINGTON, MD.	1	2	6	12	7	8	7	5	4	7	4	7	70
FRANKLIN PARK	4		2	3	4	1	6	3	7	3	3	3	39
GARFIELD, MAR.& FOL.		1											1
J.F.K. CENTER	6	1	6	4	3	2	2	5	4	2	3	4	42
GREAT FALLS, MD.	1		1	4	2		2	1		1	1		13
GREAT FALLS, VA.	1	1	3	4	1		2	1	1	3	3	2	22
GREENBELT PARK	5	7	4	5	4	6	1	7	3	4	6	2	54
G.W.M.P., D.C.										1			1
G.W.M.P., MD.	5	4	5	3	6	8	5	3	6	6	1		52
G.W.M.P., VA.	42	36	36	23	55	54	29	34	35	45	37	40	466
JONES POINT, VA.	2			1			1			1		1	6
JUDICIARY SQUARE													
LAFAYETTE PARK	3	3	3	6	3	11	13	7	8	5	3	1	66
LINCOLN PARK		1			1	1	1		2				6
MALL	20	15	22	37	31	20	18	40	20	12	35	17	287
MERIDIAN HILL		1	1	1	7	1	5	6	9	4	5	1	41
MONTROSE PARK	2	2	1	2	4	3	1	3	2	3	1		24
MONUMENT GROUNDS	15	15	14	16	24	19	20	25	18	16	16	7	205
CITY STREETS, MD.	2	5	7	5	2	1	1	2	3	1	4	2	35
MT. VERNON SQUARE					1								1
PALISADES			1	3	2	3	2		2	2	3	1	19
PISCATAWAY, MD.	1				2	1	1		1	1	3	1	11
RESERVATIONS EAST	26	17	15	18	15	20	25	19	24	24	11	7	221
RESERVATIONS WEST	7	8	8	5	4	7	20	17	12	11	8	11	118
R.F.K. STADIUM	2	5	1	4	3	15	1	6	4	4	4	9	58
ROCK CREEK PARK	24	28	35	25	24	28	39	36	28	35	20	15	337
ROCK CREEK PARKWAY	11	21	14	19	16	15	20	22	21	25	9	9	202
ROOSEVELT ISLAND	1	1				1							3
CITY STREETS, VA.		2	1	1	3	1				1	1		10
STANTON PARK					1								1
SUITLAND PARKWAY	26	11	5	11	7	6							66
WEST POTOMAC PARK	27	21	25	21	22	31	43	40	25	31	24	22	332
WOLF TRAP FARM, VA.	3	1	2		2	1	4	2	1	1	4		21
MISCELLANEOUS PARKS													
TOTAL	449	415	449	445	521	538	551	585	537	543	536	425	5,994

JUVENILES APPREHENDED

TYPE of OFFENSES	10 & UNDER	11-12	13-14	15	16	17	TOTAL
Rape -----				1			1
Robbery -----		3	20	10	15	3	51
Assault -----	1	1	13	13	3	9	40
Burglary -----					3		3
Larceny -----	8	15	26	23	7	12	91
Auto Theft -----			4	14	15	7	40
Stolen Property -----		1	1		1	1	4
Vandalism -----	9	13	13	4	8	1	48
Weapons -----	1		3	7	6	2	19
Sex Offenses -----		3				1	4
Narcotic/Drug -----		1	3	5	25	34	68
Driving Under Influence -----				2	4	2	8
Liquor Laws -----				2	7	4	13
Drunkenness -----			1				1
Disorderly -----	7	6	9	10	12	13	57
Vagrancy -----							
All Other (Except Traffic) -----	10	14	54	28	37	26	169
Curfew & Loitering Laws -----			3	1	2		6
Run-Aways -----	1		12	6	5	2	26
Suspicion -----	1	2	12	9	14	8	46
TOTAL	38	59	174	135	164	125	695
Traffic Violations	4	6	12	19	30	28	99
GRAND TOTAL	42	65	186	154	194	153	794

TYPE of OFFENSES	19 <u>69</u>	19 <u>70</u>	19 <u>71</u>	19 <u>72</u>	19 <u>73</u>
Rape -----	2	4			1
Robbery -----	39	49	25	41	51
Assault -----	10	20	14	16	40
Burglary -----	17	10	7	17	3
Larceny -----	49	74	28	43	91
Auto Theft -----	46	49	30	28	40
Stolen Property -----	1	2	5	18	4
Vandalism -----	43	35	23	23	48
Weapons -----	21	11	20	22	19
Sex Offenses -----	6		3	1	4
Narcotic/Drug -----	7	58	55	53	68
Liquor Laws -----	16	25	9	13	13
Gambling -----					
Disorderly -----	54	116	89	72	57
Vagrancy -----				1	
Drunkenness -----	2	4	6	5	1
Curfew & Loitering Laws -----	142	63	6	2	6
Run-Aways -----	76	53	45	21	26
Truancy -----	109	65	21		
Driving Under Influence -----		1		1	8
All Other (Except Traffic) -----	54	73	150	117	169
Suspicion -----		7	12	39	46
TOTAL	694	719	548	533	695
Traffic Violations	69	82	56	74	99
GRAND TOTAL	763	801	604	607	794

SERVICE INCIDENTS REPORTED,
BY MONTH & LOCATION

LOCATION	JAN	FEB	MAR	APR	MAY	JUN	JUL	AUG	SEP	OCT	NOV	DEC	TOTAL
AGRIC. RESEARCH CNTR	27	25	48	46	68	67	66	62	39	37	52	42	579
ANACOSTIA PARK	35	45	49	55	83	114	128	176	79	85	62	37	948
ARLINGTON CEMETERY	2	3	3	6	4		3	1	3	5	2	1	33
C & O CANAL, MD.	10	5	5	6	5	6	4	6	3	1	2	3	56
BALTIMORE-WASH. PKWY	436	412	426	414	420	471	432	660	565	527	416	529	5,708
C & O CANAL, D.C.	7	6	8	13	14	7	7	3	3	5	3	3	79
CITY STREETS, D.C.	270	269	300	270	301	332	256	267	291	299	282	327	3,464
CATOCTIN	6		1			39	1					1	48
COLUMBIA ISLAND	27	20	22	21	18	16	22	11	14	17	28	18	234
CONSTITUTION AVENUE	47	53	60	50	46	65	48	66	58	47	44	45	629
CITY STREETS, MD.	27	44	41	34	30	35	40	41	37	33	65	32	459
CITY STREETS, VA.	22	34	15	20	30	21	11	15	15	15	14	17	229
DUPONT CIRCLE	3	5	9	3	19	15	19	19	16	9	10	9	136
EAST POTOMAC PARK	69	54	72	94	74	105	86	81	62	48	37	33	815
ELLIPSE	775	271	267	208	226	234	223	258	271	205	243	308	2,889
FORT DUPONT	15	12	29	36	53	64	54	53	46	48	44	38	492
FORT FOOTE, MD.	18	18	20	20	29	15	18	21	22	26	6	16	229
FORT HUNT, VA.	5	13	9	13	19	21	19	9	16	14	5	6	149
FORT WASHINGTON, MD.	10	8	14	26	47	48	39	23	33	18	11	15	292
FRANKLIN PARK	7	4	7			8	10	15	13	5	11	10	90
GARFIELD, MAR. & FOL.	1				2					2			5
J.F.K. CENTER	368	289	286	301	256	205	178	161	181	214	293	302	3,034
GREAT FALLS, MD.	5	7	7	13	16	11	11	7	4	3	1	2	87
GREAT FALLS, VA.	3	5	8	6	14	10	15	9	5	6	8	4	93
GREENBELT PARK	28	42	48	61	59	76	67	69	36	41	54	44	625
G.W.M.P., D.C.	1	3		2	2	2		4	4	3	1	1	23
G.W.M.P., MD.	45	36	50	55	31	40	36	50	38	44	52	59	536
G.W.M.P., VA.	311	274	306	342	264	323	246	345	266	309	288	348	3,622
JONES POINT, VA.		4		2	4	3		2	4	2	5		26
JUDICIARY SQUARE													
LAFAYETTE PARK	72	15	7	18	20	12	25	39	23	36	18	37	322
LINCOLN PARK	1		4		8	3	4	1	4	1		2	28
MALL	52	56	82	120	70	118	141	106	104	86	70	40	1,045
MERIDIAN HILL	4	1	7	7	23	14	24	16	19	15	6	5	141
MONTROSE PARK	4	7	11	2	6	7	5	9	5	5	2	4	67
MONUMENT GROUNDS	69	85	82	126	110	108	168	138	118	94	95	70	1,263
SUITLAND PARKWAY, MD.	70	80	96	79	91	118	83	98	102	88	78	98	1,081
MT. VERNON SQUARE		1											1
PALISADES	9	6	12	12	15	2	1	4	1	2	4	7	75
PISCATAWAY, MD.	3	9	2	4	3	6	3	4	3	7	2	2	48
RESERVATIONS EAST	43	34	46	23	37	46	51	36	35	37	33	15	436
RESERVATIONS WEST	59	113	83	78	71	89	119	102	81	45	47	60	947
R.F.K. STADIUM	8	4	9	14	9	89	10	38	23	34	21	21	280
ROCK CREEK PARK	118	132	203	172	139	175	189	174	145	165	107	116	1,835
ROCK CREEK PARKWAY	102	96	113	118	77	124	90	100	119	92	93	136	1,260
ROOSEVELT ISLAND			1				2			1			4
STATUE LIBERTY, N.Y.													
STANTON PARK			2		2		1		2	4	1		12
SUITLAND PARKWAY, D.C.	68	55	34	20	15	19							211
WEST POTOMAC PARK	128	126	146	178	171	234	350	230	155	122	135	147	2,122
WOLF TRAP FARM, VA.	4	11	8	8	19	59	122	104	27	3	5	6	376
MISCELLANEOUS PARKS							40	39	36	19	12	8	154
TOTAL	2,794	2,794	3,058	3,096	3,020	3,576	3,467	3,672	3,126	2,924	2,768	3,024	37,317

MOTOR VEHICLE ACCIDENT SUMMARY

The United States Park Police investigated 3,635 motor vehicle accidents during 1973. The following motor vehicle illustrations and statistics represent an analysis of motor vehicle accidents investigated.





FIVE YEAR COMPARISON OF TRAFFIC ACCIDENTS

CLASSIFICATION	1969	1970	1971	1972	1973
MOTOR VEHICLE ACCIDENTS					
Property Damage -----	2,646	2,764	2,938	3,091	3,058
Injury (Non-Fatal) -----	685	595	552	586	551
Fatal -----	26	22	26	19	26
TOTAL	3,357	3,381	3,516	3,696	3,635
TYPE OF ACCIDENT					
Motor Vehicle - Motor Vehicle --	2,610	2,661	2,695	2,913	2,848
Motor Vehicle - Pedestrian -----	23	32	43	30	35
Motor Vehicle - Fixed Object ---	579	571	770	735	615
Other (Non-Collision) -----	145	117	8	18	137
TOTAL	3,357	3,381	3,516	3,696	3,635
Persons Killed (Non-Pedestrian) ---	30	20	21	19	21
Persons Injured (Non-Pedestrian) --	1,090	878	809	913	528
Pedestrians Killed -----	1	4	6	3	5
Pedestrians Injured -----	24	27	39	26	23
TOTAL KILLED -----	31	24	27	22	26
TOTAL INJURED -----	1,114	905	848	939	551



TRAFFIC ACCIDENTS BY LOCATION

LOCATION	PROPERTY DAMAGE ACCIDENTS	PERSONAL INJURY ACCIDENTS	FATAL ACCIDENTS	TOTAL
<u>DISTRICT OF COLUMBIA</u>				
Anacostia -----	40	10	1	51
Lafayette Park, D.C. -----	1			1
Meridan Hill Park -----	1			1
City Streets -----	32	8		40
Columbia Island -----	123	11		134
Constitution Avenue -----	167	14	2	183
East Potomac Park -----	39	11		50
Ellipse -----	41	4		45
Fort Dupont Park -----	8	1	1	10
Mall -----	38	2		40
Reservations East -----	4	1		5
Reservations West -----	2			2
Rock Creek Park -----	197	75		272
Rock Creek Parkway -----	240	37	2	279
Suitland Parkway -----	18	4		22
Washington Monument Grounds -----	151	23		174
West Potomac Park -----	390	33		423
G.W.M.P., Washington, DC -----	2	2		4
TOTAL	1,494	236	6	1,736
<u>STATE OF MARYLAND</u>				
Baltimore-Washington Parkway ---	663	139	10	812
C & O Canal -----		1		1
Fort Washington -----	5	3		8
G.W.M.P. (Md) -----	35	8		43
Suitland Parkway -----	108	30	1	139
Agric. Research Center -----	23	8		31
Greenbelt Park -----	10	1		11
Great Falls -----	6			6
City Streets -----	7	3		10
Fort Foote -----	2			2
Catoctin -----	2			2
TOTAL	861	193	11	1,065
<u>STATE OF VIRGINIA</u>				
G.W.M.P. -----	683	119	8	810
Fort Hunt -----	7	2		9
Great Falls -----				
Wolf Trap Farms -----	10			10
City Streets -----	1	1	1	3
Jones Point -----	2			2
TOTAL	703	122	9	834
GRAND TOTAL	3,058	551	26	3,635

TRAFFIC ACCIDENT SURVEY

CLASSIFICATION	DISTRICT OF COLUMBIA	STATE OF MD	STATE OF VA	TOTAL
MOTOR VEHICLE ACCIDENTS				
Property Damage -----	1,494	861	703	3,058
Injury -----	236	193	122	551
Fatal -----	6	11	9	26
Total -----	1,736	1,065	834	3,635
TYPE OF ACCIDENT				
Motor Vehicle - Motor Vehicle ---	1,458	747	643	2,848
Motor Vehicle - Pedestrian -----	21	8	6	35
Motor Vehicle - Fixed Object ----	219	245	151	615
Other (Non Collision) -----	38	65	34	137
Total -----	1,736	1,065	834	3,635
PERSONS KILLED AND INJURED				
Persons Killed (Non-Pedestrian)--	5	9	7	21
Pedestrians Killed -----	1	2	2	5
Persons Injured (Non-Pedestrian)-	220	190	118	528
Pedestrians Injured -----	16	3	4	23
Total Killed -----	6	11	9	26
Total Injured -----	236	193	122	551

AGES OF OPERATORS INVOLVED

AREA	18-20	21-24	25-29	30-34	35-39	40-44	45-49	50-54	55-59	60 & Over	TOTAL
D.C.											
Male	240	395	395	360	228	220	169	146	101	257	2,511
Female	79	135	129	92	63	53	47	44	31	66	739
MARYLAND											
Male	208	210	187	185	125	124	82	73	55	125	1,374
Female	79	106	70	53	65	30	22	31	22	48	526
VIRGINIA											
Male	174	147	179	139	130	96	81	81	49	102	1,178
Female	53	59	44	41	22	30	20	28	17	37	351
TOTAL											
Male	622	752	761	684	483	440	332	300	205	484	5,063
Female	211	300	243	186	150	113	89	103	70	151	1,616
TOTAL	833	1,052	1,004	870	633	553	421	403	275	635	6,679

TRAFFIC ACCIDENTS
by
MONTH, DAY OF WEEK & HOUR

CLASSIFICATION	JAN	FEB	MAR	APR	MAY	JUN	JUL	AUG	SEP	OCT	NOV	DEC	TOTAL
Property Damage Accidents	199	236	281	332	322	271	256	261	216	246	215	223	3,058
Personal Injury Accidents	30	39	48	50	50	51	61	43	44	52	46	37	551
Fatal Accidents	1	3	1	2	3	1	2	3	2	2	5	1	26
TOTAL	230	278	330	384	375	323	319	307	262	300	266	261	3,635

DAY OF WEEK	DISTRICT COLUMBIA	PERCENT	STATE OF VIRGINIA	PERCENT	STATE OF MARYLAND	PERCENT	TOTAL	PERCENT
Monday	247	14%	144	14%	94	11%	485	13%
Tuesday	258	14%	155	15%	108	13%	521	15%
Wednesday	251	14%	131	12%	124	15%	506	14%
Thursday	264	15%	158	15%	139	17%	561	15%
Friday	282	16%	171	16%	161	19%	614	17%
Saturday	233	13%	166	15%	110	13%	509	14%
Sunday	201	12%	140	13%	98	12%	439	12%
TOTAL	1,736	100%	1,065	100%	835	100%	3,635	100%

HOUR OF DAY	TOTAL	A.M. HOURS	P.M. HOURS
12 - 01 -----	264	90	174
01 - 02 -----	262	96	166
02 - 03 -----	310	86	224
03 - 04 -----	348	64	284
04 - 05 -----	356	29	327
05 - 06 -----	309	27	282
06 - 07 -----	273	55	218
07 - 08 -----	339	194	145
08 - 09 -----	372	242	130
09 - 10 -----	251	131	120
10 - 11 -----	274	150	124
11 - 12 -----	277	140	137
TOTAL	3,635	1,304	2,331

SPECIAL EVENTS AND PUBLIC GATHERINGS

The year 1973 witnessed a decline in the number of large demonstrations occurring within the National Capital Parks. During this year, visitation to both publicly and privately sponsored programs increased.

Mass demonstrations were replaced by smaller and more orderly ones, which did not require total Force mobilization to carry out our law enforcement responsibilities. Current trends do not indicate that the number of demonstrations taking place within the National Capital Parks can be expected to significantly decrease or that they will remain small. As long as demonstrations continue to be a popular means of expression, the Force's manpower commitments to their containment and control will remain high.

Annual events such as the National Cherry Blossom Festival, Independence Day Celebration, and the President's Cup Regatta have continued being major attractions. Programs at the John F. Kennedy Center for the Performing Arts, Wolf Trap Farm, Carter Barron Amphitheatre, and Watergate Concerts increased in popularity and attendance, causing additional manpower demands on the Force.

In 1973, the Force serviced 5,240 special events and demonstrations which required a total of 96,331 man-hours. This represents an increase in man-hours of approximately 14% over 1972.

It is anticipated that the demand for police services at special events will continue to increase at a rate equal to or greater than the present rate. To meet this challenge, the Force will strive for optimum utilization of its manpower resources, and will continue to maintain a high degree of readiness to cope with any unforeseen events occurring within our areas of responsibility.

HIGHLIGHTS

The Force was responsible for public protection, crowd control, traffic supervision, and security functions in all park areas that were used during the Presidential Inauguration.



Presidential Inauguration

During the Brezhnev visit, the Force was heavily engaged in security functions in Washington, D.C., and at Camp David, Maryland. For its outstanding performance, the Force was recommended for a Unit Citation.



Brezhnev Visit

HIGHLIGHTS

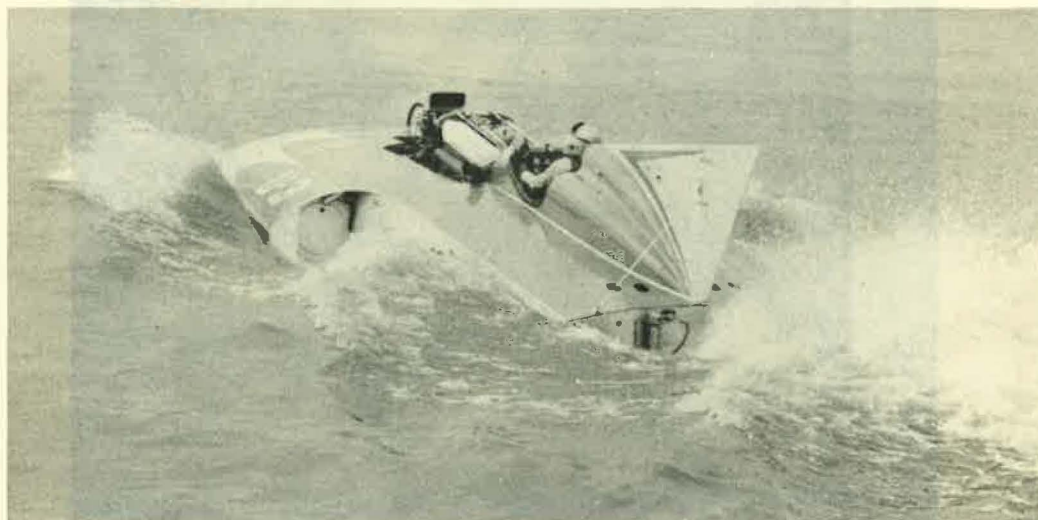
The Festival of American Folklife attracted over 1 million visitors to the Nation's Capital causing a heavy demand for all types of police services.



Courtesy of the
Washington Post

Festival of American Folklife

As a major annual attraction in the Washington area, the President's Cup Regatta requires a large commitment of personnel for traffic and crowd control.

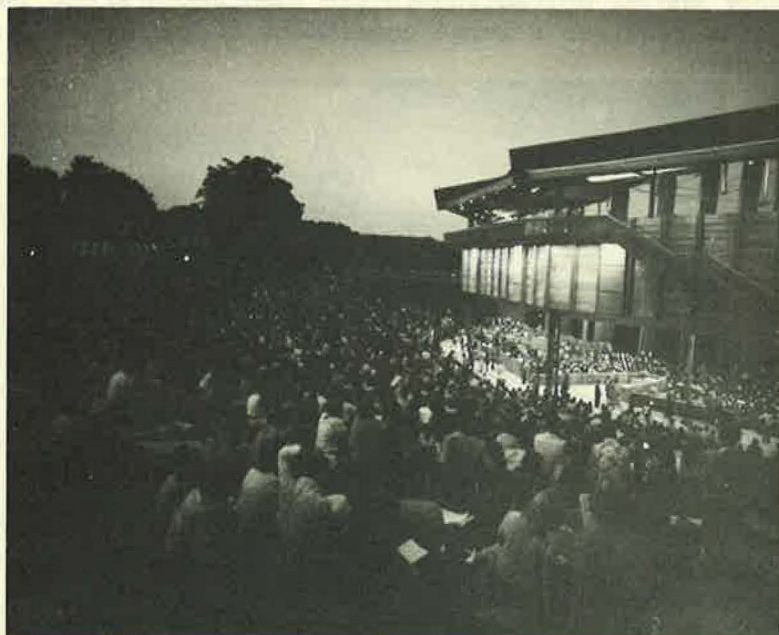


President's Cup Regatta

HIGHLIGHTS

Listed below are other notable events which occurred during 1973. It is a partial list intended to demonstrate the variety of events that the Force services. It is comprised of the occasion, dates, and attendance when applicable.

Occasion	Attendance	DATE
Chinese Acrobats	3,000	01/07/73-01/13/73
President Johnson's Funeral	10,000	01/24/73
People Against Poverty	8,000	02/07/73
Human Kindness Day	75,000	04/21/73
Rock Concert & Polish American Day	20,000	04/28/73-04/29/73
Jewish Community Council of Greater Washington	8,500	06/17/73
Presidential Security Details		Throughout 1973
Leningrad Symphony	2,700	10/26/73-11/01/73



Rock Concert

FORCE MEMBERS ON FIELD ASSIGNMENTS

DURING CALENDAR YEAR 1973

In addition to servicing the many events in National Capital Parks, members of the Force were deployed in other regions of the National Park Service for the purpose of assisting Park Rangers in the maintenance of law and order. The following list comprises the assignments, dates, number of days, and the number of men assigned.

ASSIGNMENT LOCATION	DATES	# DAYS	# MEN
Lake Meade National Recreation Area	04/15/73-Ongoing		1
Big Bend National Park	06/03/73-09/21/73	111	1
Padre Island National Seashore	06/10/73-08/19/73	71	1
Rocky Mountain National Park	07/02/73-07/09/73	8	11
Blue Ridge Parkway	07/10/73-09/11/73	63	2
Olympic National Park	07/16/73-07/30/73	15	1
Mount Rushmore, South Dakota	08/02/73-08/16/73	15	12
Zion National Park	08/26/73-09/07/73	13	8
Cumberland Gap, Kentucky	08/31/73-09/04/73	10	5



Mt. Zion

VISITATION



Lincoln Memorial

NATIONAL CAPITAL PARKS - WEST	4,719,895
NATIONAL CAPITAL PARKS - GWMP	3,647,701
NATIONAL CAPITAL PARKS - EAST	2,333,273
GREENBELT PARK	1,139,631
C & O CANAL (Overall Use)	465,387
LINCOLN MEMORIAL	2,422,571
WASHINGTON MONUMENT	1,373,534
JEFFERSON MEMORIAL	1,319,370
CUSTIS LEE MANSION	589,617
FORD THEATRE/HOUSE WHERE LINCOLN DIED	740,026
WOLF TRAP FARM	482,636
JOHN F. KENNEDY CENTER	1,400,000

SECTION III

Awards

Major Goals and Objectives, 1974

AWARDS

Valor

Sergeant Stephen G. Livesay
Raymond L. Hawkins (Posthumous)



Sgt. Stephen G. Livesay at Kiwanis Club Ceremony receiving the "Policeman of the Year Award." Left to Right: Father George Reid, Former Chief Grant Wright, NPS Deputy Director Russell Dickenson, Sgt. Stephen Livesay, Chief Jerry L. Wells. Sergeant Livesay made a heroic rescue of a female motorist whose car was floating in the flood swollen Rock Creek during Hurricane Agnes.



RAYMOND L. HAWKINS MEMORIAL AWARD

In honor of the late Officer Raymond L. Hawkins, who gave his life while attempting to make an arrest during a store robbery, a Memorial Award shall be presented annually by the Force to the United States Park Police recruit who attains the highest achievement in the Force training program.

Special Achievement

Lieutenant Franklin W. Stevens
Sergeant Robert T. Harvey
Officer Donald V. Osborne
Officer Irving D. Tubbs
Officer Curtis R. Wheeler
Officer Jesse A. Wilson
Gerald W. Grauel
Margery A. Hight

Quality Increase

Mary Parker



Dogmaster Clayton Connor and Police Service Dog Arno; Dogmaster Buzz Hackett and Police Service Dog Falcon with trophy won for 2nd Place Police Dog at the United States Police Canine Competition, Region III.



Chief Wells presenting Sergeant Ayres with plaque for the Horsemounted Unit for winning 1st Place in the Police Mounted Competition in Devon, Pennsylvania.



U.S.P.P. Basketball Team wins "First Place" in the Montgomery County League. Left to Right: Officer Frederick Cunningham, Chief Wells, Sergeant James Martin, Officer Vernon Young, Officer Clinton Mack, and Officer Andre Jordan.

FBI NATIONAL ACADEMY

John Edgar Hoover
Certificate of Scholastic Excellence



Park Ranger Weston P. Kries, Safety Officer for the U.S.P.P., received the John Edgar Hoover Certificate of Scholastic Excellence during the 92nd Session of the FBI National Academy.

The John Edgar Hoover Certificate of Scholastic Excellence is awarded to the student at the FBI National Academy who maintains an "A" average in the Law Enforcement College Curriculum.

Lieutenant William W. McQueeney, Commander of the Potomac Park Substation, received the John Edgar Hoover Certificate of Scholastic Excellence during the 93rd Session of the FBI National Academy.



MAJOR GOALS AND OBJECTIVES 1974

1. Fill all existing vacancies in the Patrol, Special Operations, and Criminal Investigations Branches by October 15, 1974.
2. Continue to provide the public with highly professional police service.
3. Complete development of procedures and criteria for use by the Applicant Interview Personnel in conducting interviews and evaluating applicants.
4. Continue increased acceleration of safety program to prevent visitor and Force injuries and accidents.
5. Implement and make operational the Golden Gate National Recreation Area Substation by April 1, 1974.
6. Implement and make operational the Gateway National Recreation Area Substation by May 15, 1974.
7. Increased and more thorough coverage of bicycle trails during entire year.
8. Develop an effective training program to permit utilization of civilian personnel as dispatchers by December 31, 1974.
9. Ensure that recruitment and employment commitments are achieved in accordance with the Force affirmative action plan by December 31, 1974.
10. Evaluate the efficiency and effectiveness of Force provisions for fiscal needs at field offices, i.e., procedures and related documentation in transacting all matters bearing upon fiscal affairs at the end of each quarter.
11. Develop effective methods to provide technical support (supply, property, vehicle maintenance, records and communications) services for field activities by December 31, 1974.
12. Develop, have approved, and initiate a better system of handling and routing of personnel complaints by June 30, 1974.
13. Continue to work with the Office of the Solicitor in the overhauling of Force Rules and Regulations pertaining to conduct.
14. Continue planning National Visitor's Center Substation.



