

M. CRONAN '75



**UNITED STATES PARK POLICE      ANNUAL REPORT 1974**



Presidential Escort

## Contents:

### Page

1	Letter from the Chief
2	History of United States Park Police
4	Raymond L. Hawkins Award
5	Office of the Chief
6	Planning and Inspections
7	Operations, Patrol Branch
8	District One
10	District Two
11	District Three
12	District Four
13	District Five
14	National Capital Parks Guard Force
16	FBI National Academy Associates
17	Criminal Investigations Branch
18	Special Operations Force
22	Regional Officers
24	Senior Officer
25	Gateway National Recreation Area
26	Golden Gate National Recreation Area
28	Administrative Services Division
30	Technical Services Division
32	Statistical Summaries - 1974



IN REPLY REFER TO:

## United States Department of the Interior

NATIONAL PARK SERVICE  
OFFICE OF NATIONAL CAPITAL PARKS  
HEADQUARTERS, UNITED STATES PARK POLICE  
1100 OHIO DRIVE SW.  
WASHINGTON, D.C. 20242

### Memorandum

To: Director, National Capital Parks  
From: Chief, United States Park Police  
Subject: Annual Report

The 1974 Report has been designed to reflect the human aspects of the United States Park Police in our endeavor to provide the highest caliber of law enforcement professionalism necessary to ensure that the public receives maximum service. In addition to the routine police activities, efforts have been made to show Force members providing services that made 1974 another successful year for the Force.

The greatest challenge to the Force in 1974 was the opening of two field offices: the Golden Gate National Recreation Area in San Francisco, California, and Gateway National Recreation Area in New York and New Jersey. Both field offices are now in full operation and are providing the citizens of those areas with the same high standard of law enforcement professionalism that the citizens of the Washington area have enjoyed.

Visitation continued to increase in all park areas as did the demands on the Force. The 537 Force members investigated 1,592 Part I offenses, 9,067 Part II offenses, 3,136 motor vehicle accidents, and answered an additional 40,380 requests for service. In all instances, the statistics reflect an increase over those of 1973.

More than ever, 1974 has been a year for the Force in which great changes were made, new innovations took place, and new roles were created.

We feel that we have successfully met the challenges and demands placed upon us and appreciate your continued support.

*Jerry L. Wille*

# History of the United States Park Police

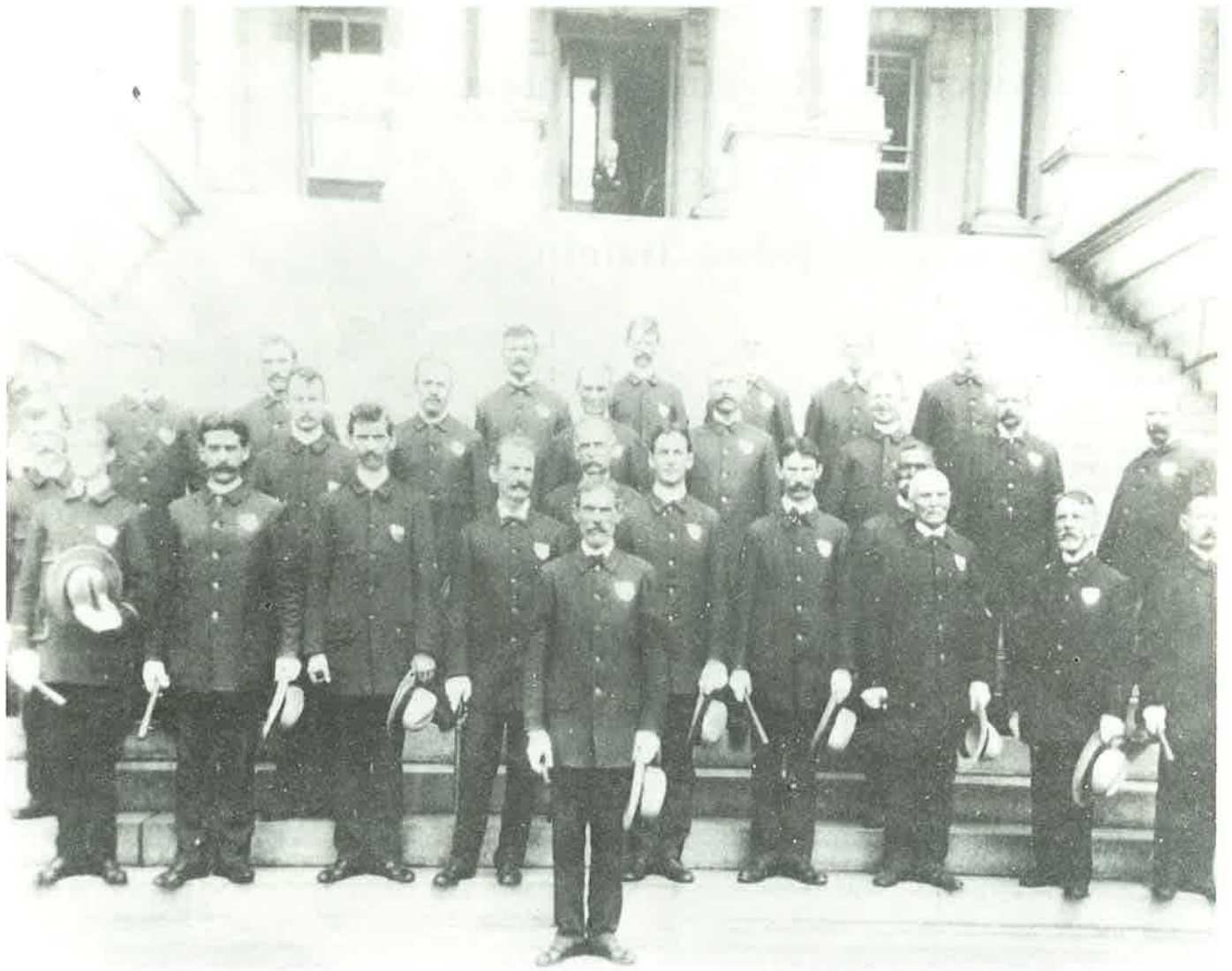
Many of our present-day parks have been under the auspices of the Federal Government since George Washington was President. The firm control of Federal lands has been handed down through a long succession of Federal officials and through the hands of many agencies, and, as far as the park system is concerned, rests now in the United States Department of the Interior.

The United States Park Police, known as Park Watchmen prior to 1919, has been continuously on duty in the older Federal parks of the Nation's Capital since 1791.

Park Watchmen were appointed by a Board of Commissioners established by President George Washington. Constables, Park Watchmen, and Town Watchmen policed the Nation's Capital until the Civil War brought rapid changes to the Federal City. In 1891, Congress combined the District, then called the County of Washington, and the towns of Washington and Georgetown into the Metropolitan Police District.

By an Act of Congress of August 5, 1882, the United States Park Police was given concurrent jurisdiction in all areas of the District of Columbia. Prior to this Act, its arrest authority was limited to the Federal park areas within the city.

The expansion of police authority and the responsibility of the United States Park Police from local to regional jurisdiction began in 1929 with the assignment of officers to patrol the Mount Vernon Memorial Parkway in nearby Virginia. Now, by virtue of their jurisdictional purview, the United States Park Police provides protection and enforces the laws and statutes of the Federal Government within the geographical confines of the District of Columbia, the Federal parks and various other federally-owned reservations in the State of Maryland and the Commonwealth of Virginia. Jurisdiction has recently been extended to include the Golden Gate National Recreation Area in San Francisco, California, and the Gateway National Recreation Area in New York and New Jersey. When the occasion warrants, United States Park Police officers are also assigned temporarily to other parks or offices throughout the National Park System within the United States and its possessions.



United States Park Police 1907

Raymond L. Hawkins Memorial Award  
for Excellence in  
Police Training

"I have always been interested in becoming a member of the public safety forces... and contribute to the health, safety, and well-being of my fellow man."

Raymond L. Hawkins

1943-1972



Kathleen M. Carlson



Office

of the

Chief







## Planning



## Inspections



The Planning and Inspections Unit is under the direction of Inspector Milton R. Lomax.

Captain George W. Winkel and his staff provided the Chief with policy and program recommendations and conducted lengthy studies including the review of existing policy procedures. The Planning Unit represented the United States Park Police on the Department of the Interior Task Force Study on Law Enforcement and was instrumental in the development of the conclusions of that Study. Planning also provided the National Park Service with assistance in law enforcement connected problems.

The Inspections Unit, under the command of Lieutenant John D. Christian, conducted critical examinations in all areas of Force activity that may have posed a threat to Force integrity. The Inspections Unit provided field and management inspections, investigation of personnel complaints, internal safety, and Equal Employment Opportunity (EEO) compliance.



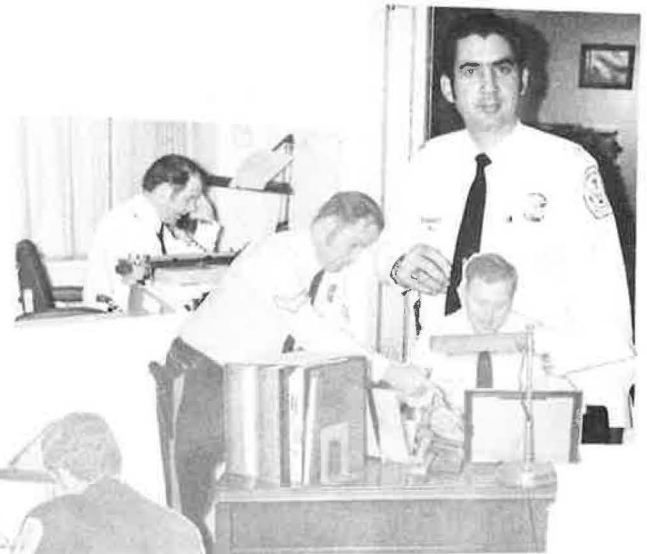
## Operations Division



The Operations Division, commanded by Deputy Chief Paul F. Burgus, has a complement of 432 Force members and 12 civilians. It is divided into 3 branches: Patrol, Special Operations, and Criminal Investigations. Operations Division personnel responded to over 40,000 requests for service, 1,592 Part I and 9,067 Part II offenses, and investigated 3,136 motor vehicle accidents.

The 231 Force members assigned to the Patrol Branch, are under the direction of Captain Denny R. Sorah. The Branch is divided into 5 districts and provides police services to the citizens and visitors who frequent the 45,615 acres of parkland in the Washington metropolitan area.

## Patrol Branch





## District One



The primary responsibility of District One Substation personnel is the protection of the visitors to the parks, monuments, and memorials in the downtown area of Washington, D.C. The 103 police personnel assigned to District One answered 13,942 requests for service, including citizen assists, motor vehicle accidents, misdemeanor and felony arrests, and other incidents. Special duties performed by District One personnel include foot, bicycle, cruiser, and scooter patrols. An administrative staff of 12 police personnel provides support services.







## District Two

The 41 officers of the Glen Echo Substation are responsible for safety and law enforcement on the George Washington Memorial Parkway and the C&O Canal areas. Officers of District Two are commanded by Lieutenant W. Franklin Stevens. District Two units issued 6,536 TVN's and 5,553 Courtesy Tags. 5,263 disabled motorists were assisted and 809 accidents were investigated.

The recently opened Wolf Trap Farm Park for the Performing Arts, the site of the Filene Center, was a major area of responsibility. Because of the heavy traffic congestion due to the high visitor attendance at Wolf Trap, additional patrol was necessary and required many overtime manhours.



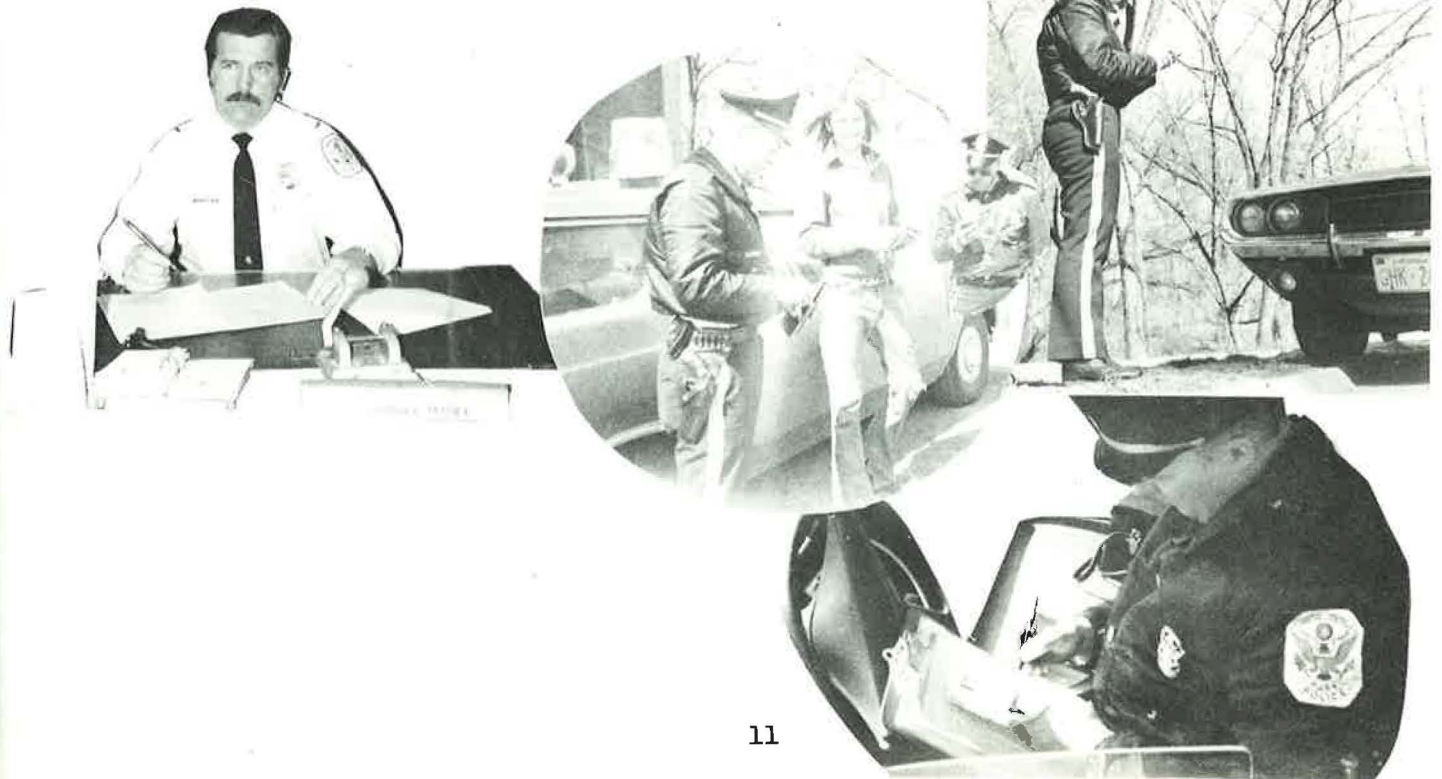
The Rock Creek Park Substation is commanded by Lieutenant Richard E. Magee. The officers of District Three provide a localized and effective service to the residents and visitors of the Rock Creek Park area. Rock Creek Park is the largest area of responsibility in District Three and consists of 1,754 acres, 71 miles of horse, bicycle and nature trails, 49 miles of roadways, and 70 picnic groves.

Police coverage is provided for the parks east of Rock Creek Park, such as Malcolm X Park, Fort Totten, Barnard Hill, Fort Slocum, and Langston Golf Course. Parks and areas west of Rock Creek Park, the C&O Canal, Fletcher's Boathouse, Fort Reno, Battery Kemble Park, and Glover Archbold Park are also well patrolled.

In addition, police coverage is provided at the yearly concerts held at Carter Barron Amphitheater. Some of the entertainment which was available included Rufus, Harold Melvin and the Bluenotes, and Earth, Wind and Fire. Major sporting events, such as the International Tennis Matches also took place in Rock Creek Park, as well as other minor events.

The 30 officers of District Three have handled 3,978 cases utilizing cruisers, motor scooters, and bicycles in their patrol.

## District Three





The 25 officers assigned to District Four are under the command of Lieutenant Lloyd E. Hill. The Greenbelt Substation officers responded to 9,152 reported complaints and drove more than 505,900 miles in order to provide service to the over 65,000 motorists traveling the Baltimore-Washington Parkway daily. The number of miles patrolled by these officers, together with the decrease in the speed limit on the Parkway, resulted directly in the total reduction of motor vehicle accidents by 26 percent and of fatalities by 50 percent.



## District Four



7,912 TVN's and 9,247 Courtesy Tags were issued to motorists. District Four personnel also provided services to the Agriculture Research Center and to the 1,296,435 visitors of Greenbelt Park.

The 34 police officers assigned to the Anacostia Park Substation, commanded by Lieutenant Edward R. Brodie, provided service to the citizens and visitors of the park areas in the urban community of southeast Washington as well as those park areas in Prince George's County, Maryland. In addition to patrolling the Suitland Parkway in Maryland, the officers of the Anacostia Substation provided the community with more than 25 special programs which were planned to help improve community involvement. Great emphasis was placed on promoting communication with the youngsters. The programs, presented at different schools and parks, included bicycle and traffic safety instruction and informative group "rap" sessions. The "Summer Hut", which was attended by over 200,000 people, was part of these summer programs for which visitor protection was necessary. This protection was accomplished through foot patrol and the use of motor scooters, bicycles, and cruisers in Anacostia Park.



## District Five







## NCP Guard Force

The National Capital Parks Guard Force, under the command of Lieutenant Henry H. George, provided security operations for the National Capital Parks during 1974. The 43 guard personnel provided service for the John F. Kennedy Center, Wolf Trap Farm Park, Carter Barron, Ford's Theatre, the Douglass Home, and the National Capital Parks Headquarters Building. When public gatherings created a strain on Park Police personnel, the Guard Force provided supplemental coverage at the monuments and memorials.

COOPERATION

the backbone of

EFFECTIVE

Law

ENFORCEMENT



## FBI NATIONAL ACADEMY ASSOCIATI

Jerry L. Wells, Chief

Franklin A. Arthur, Assistant Chief

Paul F. Burgus, Deputy Chief

Roland D. Fallin, Deputy Chief

Hugh A. Groves, Inspector

Edward A. Haralson, Inspector

Edward H. Henley, Inspector

Parker T. Hill, Inspector

Milton R. Lomax, Inspector

James P. Deely, Captain

Bobbie W. Huffman, Captain

James C. Lindsey, Captain

Douglas C. McPherson, Captain

William W. McQueeney, Captain

Jack M. Sands, Captain

Denny R. Sorah, Captain

John D. Christian, Lieutenant

Ronald R. Kerzaya, Lieutenant

George R. O'Neill, Lieutenant

Seventy-seventh Session

Seventy-first Session

Seventy-ninth Session

Sixty-sixth Session

Ninety-sixth Session

Eighty-second Session

Eighty-first Session

Eighty-sixth Session

Eighty-eighth Session

Ninety-seventh Session

Ninety-fifth Session

Ninety-ninth Session

Ninetieth Session

Ninety-third Session

Ninety-first Session

Ninety-eighth Session

Ninety-fourth Session

Eighty-fourth Session

Ninety-second Session

## Criminal Investigations Branch

The Criminal Investigations Branch, under the command of Captain James P. Deely, is comprised of 25 investigators and 5 additional officers assigned to the Identification Unit. During 1974, the Criminal Investigations Branch personnel investigated 1,775 criminal cases of which 1,592 were Part I offenses. This represents an increase of 405 cases or 40 percent more Part I offenses than 1973.

In November 1974, 13 additional investigators were trained and assigned to CIB.

The Identification Unit fingerprinted and photographed 1,688 persons in 1974 and assisted with the investigation of 307 criminal cases.



## Special Operations Force

The 103 police personnel of the Special Operations Force, under the command of Captain James C. Lindsey, provided field support operations in 1974. SOF units, comprised of motorcycle, horse mounted, aviation, canine, radar, special events, special equipment and tactics, and selective enforcement, provided police services for 304 special events involving over 2,000,000 visitors. Among these special events were the Cherry Blossom Festival, Human Kindness Day, the President's Cup Regatta, the Annual Fourth of July Celebration, and the Festival of American Folklife. In addition to the special events, over 66,000 persons participated in 117 demonstrations.

The Motorcycle Unit alone provided 116 Presidential escorts. 118 requests for escorts for Heads of State, Congress, and others were also filled.

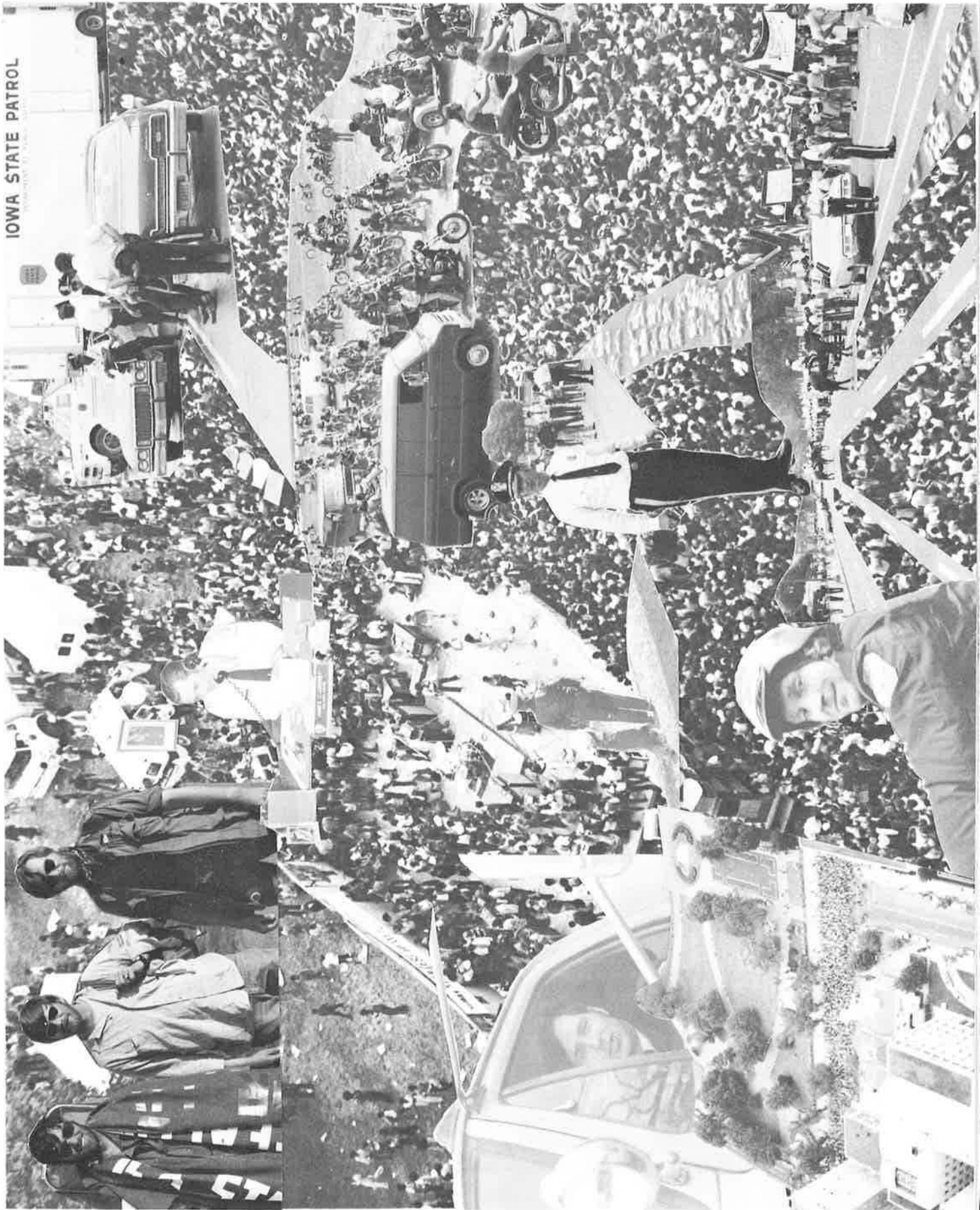
The Aviation Unit logged in over 900 flight hours, providing airborne service in over 600 criminal and non-criminal incidents. Over 25 lives were saved through medical evacuation and search and rescue operations, and Aviation also provided over 20 medical evacuations for victims in other area jurisdictions. In addition to medical and search and rescue operations, the Aviation Unit provided air recon for all the major special events of 1974, and participated in over 30 community relations and public safety events.

The 35 officers in the Horse Mounted Unit provided patrol and rescue operations to the more than 44,000 acres of park land in the Washington area. They provided traffic and crowd control assistance during the 106 major demonstrations and special events such as the Carter Barron programs. The Horse Mounted Drill Team participated in 4 police competition shows, and over 30 parades and exhibitions, including the Washington International Horse Show. 13 officers were trained in horse mounted duties in November and December 1974.

The 5 officers assigned to the Force Canine Unit provided service to the entire Washington area and participated in over 50 school and community demonstrations and exhibitions, including the FBI Academy and the International Horse Show. Trained in explosive device detection, 2 officers and dogs assisted in bomb search operations in park and other areas such as National Airport and the Smithsonian Institution. The Park Rangers of Cape Code National Seashore were assisted in a search operation by an officer and dog.

The Force Radar Unit provided selective enforcement to all the traffic problem areas. Over 5,000 TVN's were issued in order to reduce speed-related motor vehicle accidents. The Radar Unit was involved in 16 exhibitions and other community relations programs.

The 18 officers assigned to the Selective Enforcement Unit provided security coverage at Catoctin and supportive field operations such as additional coverage on the Parkways and casual clothes operations in high crime areas. This unit was also summoned to Delaware Water Gap, Big Bend National Park, Texas, and the Herbert Hoover National Historic Site, West Branch, Iowa, to provide supplemental law enforcement.





Sergeant Billy R. Frazier  
Investigator  
Olympic National Park



Captain Jack M. Sands  
Pacific Northwest Region



Captain Douglas C. McPherson  
Western Region



Sergeant James E. Hilton  
Investigator  
Lake Mead National Recreation Area



Captain Richard A. Valentine  
Southwest Region

Inspe  
Chief, I

Captain  
Rock

# onal Advisors



ain James P. Turner  
Midwest Region



Captain William W. McQueeney  
North Atlantic Region



er Parker T. Hill  
Division of Protection  
WASO



Sergeant Irving P. Edwards  
National Capital Parks



Captain Bobbie W. Huffman  
Mid-Atlantic Region



Donald L. Rodgers  
Mountain Region



Captain Roy E. Coign  
Southeast Region





Grace H. Rowe

Senior Officer

appointed January 1, 1945

**Park Police to Award Prizes to Winners In First Pistol Shoot**

The Sunday Star, Washington, D.C.  
The Police Department will sponsor a pistol shoot for the first time in the history of the city. The shoot will be held at the Police Training Center on Monday, July 16, at 10 a.m. The prizes will be a gold watch for the winner, a silver watch for the runner-up, and a gold watch for the third place winner. The shoot will be open to all police officers and their families. The prizes will be awarded by the Police Commissioner, Mr. E. J. Connelley.



**She Always Gets Her Man**



Mrs. Grace H. Rowe is not a bird-watching snail through Rock Creek. She is a police officer armed with a revolver, slow and black jack, she's on the look-out.



Catching automobile thieves is one of her jobs. Here she demonstrates the tightness pressure on a claw. When facing suspected car thieves, she

**CASH**

Unfold luxury in a RENARK, gives the world like no other. Durable, long wear.

\$8.75



PHILIPSON, I  
Pink  
Dove Blue  
Oxford  
Tan Heather

Open while watching a suspicious car. She was pleasantly surprised to find the car a few moments later. She found by whom I learned I saw her leaving the car with a rifle under her arm. She reached the car and started through the alley and into a back door. She was the first to see the car. She was the first to see the car. She was the first to see the car.





In 1974, the Gateway National Recreation Area was established. This field office is commanded by Inspector Hugh A. Groves. The United States Park Police accepted the challenge of policing the areas of Staten Island and Jamaica Bay in New York, and Sandy Hook in New Jersey.

The 46 police officers assigned to Gateway National Recreation Area responded to 7,354 complaints. These can mainly be attributed to the peak visitation during the summer months at Jacob Riis Park and Staten Island. Within the geographical boundaries of Gateway lies the numerous waterways which are the protective responsibility of the Force boat patrol.

## New York



## New Jersey



## GNRA



## San Francisco

When Golden Gate National Recreation Area opened in 1974, it was the first major expansion of the Force outside the Washington, D.C. area. 31 officers were assigned to the San Francisco, California, field office. Under the direction of Inspector Lynn H. Herring, personnel assigned to GGNRA patrolled the 24,000 acres of parkland and responded to 415 reported incidents and 1,974 requests for service. 31 motor vehicle accidents were investigated by Force personnel. Cruiser patrols were supplemented by motor scooters, motorbikes and 2 horsemounted officers.

## GGNRA





Horsemounted at GGNRA

# Administrative Services Division...

The Administrative Services Division, under the command of Deputy Chief Roland A. Fallin, has the responsibility of providing the support services of personnel, the budget, fiscal affairs, statistics, and training. Deputy Chief Fallin serves as the principal representative of the Chief concerning administrative functions.

## Data Processing

Lieutenant Charles E. McLane and his staff prepared the Force budget, and gathered, analyzed, and distributed the statistical data necessary for the effective administration of the Force.

## Personnel

The Personnel Branch, commanded by Lieutenant Billy W. McDonald, provided the necessary foundations for the 609 personnel actions in 1974. This included the recruiting, processing, and hiring of 101 new Force members. The Clinic Liaison Officer, Private Clifton E. Wilson, handled the Force administrative duties in making arrangements for the 472 physical examinations.

## Training

The Training Branch, under the command of Inspector Edward H. Henley, provided over 80,000 manhours in various training sessions at a cost of over \$40,000. Over 30 percent of the Force members were enrolled in degree programs and 20 percent of the Force hold degrees in law enforcement. The Training Branch also processed over 2,100 requests for training.



# Technical Services Division...

Commanded by Inspector Edward A. Haralson, the Technical Services Division provided the Force with various support functions to include radio and telephone communications, photo services, vehicle maintenance, property custody and uniform and equipment issue.

## Communications

The 23 police personnel assigned to Lieutenant Robert E. Langston provided radio, telephone, and teletype communication. The Communications Branch also provided support services for the 51,083 reported incidents in 1974.

## Photo Lab

Mr. Herman B. Gaines was responsible for processing over 12,000 negatives and prints ranging from shots of motor vehicle accidents to Presidential ceremonies. Mr. Gaines photographed the majority of demonstrations, parades, and other special events.

## Property and Transportation

Property and Transportation, under Lieutenant Robert O. Harrison, provided equipment, uniforms and vehicles to the Force, including the complete uniforming of 101 newly-recruited officers. Property and Transportation also controlled and processed over 1,600 articles of evidence, found property and property for safe keeping. Mr. Ralph D. Howell and his staff were responsible for the maintenance and repair of the fleet of 157 Force vehicles.

## Records Management

The Records Branch, under the guidance of Sergeant A. George Graves, provided services to the public, such as duplication of reports, information, etc. The Branch also has the responsibility for filing, distributing incoming and outgoing correspondence, and many other assignments which must be completed as needed.





Statistical Summaries 1974

# HIGHLIGHTS

	<u>1973</u>	<u>1974</u>	<u>INCREASE</u>	<u>DECREASE</u>
TOTAL ALL ARRESTS -----	73,105	75,532	2,427	
Adults Arrested -----	72,311	74,363	2,052	
Juveniles Apprehended -----	794	1,169	375	
TOTAL ARRESTS FOR PART I CLASSES ---	427	394		33
Adults Arrested -----	201	167		34
Juveniles Apprehended -----	226	227	1	
TOTAL ARRESTS FOR PART II CLASSES --	1,753	2,041	288	
Adults Arrested -----	1,284	1,320	36	
Juveniles Apprehended -----	469	721	252	
TOTAL TRAFFIC ARRESTS -----	70,925	73,097	2,172	
Adults Arrested -----	70,826	72,876	2,050	
Juveniles Apprehended -----	99	221	122	
TOTAL TRAFFIC CHARGES -----	70,925	73,097	2,172	
Adult Violators -----	70,826	72,876	2,050	
Moving -----	31,399	26,247		5,152
Parking -----	39,427	46,629	7,202	
Juvenile Violators -----	99	221	122	
Moving -----	99	218	119	
Parking -----		3	3	
TOTAL MAJOR OFFENSES REPORTED -----	1,204	1,612	408	
Deduct Offenses Unfounded -----	17	20	3	
ACTUAL MAJOR OFFENSES -----	1,187	1,592	405	
TOTAL MAJOR OFFENSES SOLVED -----	169	198	29	
AUTOMOBILES STOLEN -----	43	81	38	
AUTOMOBILES RECOVERED -----	34	65	31	
AUTOMOBILES RECOVERED FOR OTHER		1		
JURISDICTIONS -----	122	110		12
TOTAL TRAFFIC ACCIDENTS -----	3,635	3,136		499
Fatal Accidents -----	26	15		11
Injury Accidents -----	551	504		47
Property Damage Only Accidents---	3,058	2,617		441
TOTAL TRAFFIC DEATHS -----	26	15		11
Non-Pedestrian -----	21	14		7
Pedestrian -----	5	1		4
TOTAL TRAFFIC INJURIES -----	551	740	189	
Non-Pedestrian -----	528	717	189	
Pedestrian -----	23	23		

PERSONNEL STATUS FOR 1974

PERSONNEL DISTRIBUTION AS OF DECEMBER 31, 1974				
<u>DIVISION</u>	<u>POLICE</u>	<u>GUARDS</u>	<u>CIVILIANS</u>	<u>TOTAL</u>
Office of the Chief	16		5	21
Services	58		21	79
Other Regions	11			11
Operations:				
a. Uniformed	432	53	11	496
b. Plainclothes	20		1	21
TOTAL	* 537	**53	***38	628

CHANGES IN POLICE PERSONNEL	
1. Present for duty end of 1973-----	470
2. Recruited during 1974-----	98
Total to account for-----	568
3. Separated from the Force:	
a. Voluntary resignation and transfers-----	18
b. Retirement on Pension-----	12
c. Termination-----	1
Total Separations-----	31
4. Present for Duty End of 1974-----	537

\*Includes one officer on military furlough and 8 Force members of the Services Division on detail to the Consolidated Federal Law Enforcement Training Center.

\*\*Includes 10 guards assigned to Gateway NRA on Career Conditional (Part Time) Appointments.

\*\*\*Includes 7 civilian employees hired on other than permanent appointments.

COURTESY TAG REPORT

<u>OFFENSES</u>	<u>D.C.</u>	<u>MD.</u>	<u>VA.</u>	<u>CAL.</u>	<u>NY.</u>	<u>TOTAL</u>
Speed	1491	3073	459	78	109	5210
Right-of-Way	448	114	27	1	2	592
Signal Lights	1036	194	60	1		1291
Stop Signs	139	58	21	3	30	251
Turns	711	87	78	1		877
Wrong Side and Overtaking	50	19	4	2	3	78
Following Too Close and Colliding	59	156	11			226
Intention Signal	14	34	1	1	1	51
Brakes	2	1		33		36
Reckless Driving	2	48	1		6	57
Other Driver Behavior	1870	1400	395		29	3694
Other Unsafe Vehicle & Load Condition	760	895	172	6	11	1844
Miscellaneous	618	622	60	19	80	1399
Vehicle equipment, Not Safe	55	26	9			90
Overtime Parking	546	2644	241	44	1	3476
Parked Wrong Way	5165	614	323	265	636	7003
Parked Wrong Manner	201		2	5	8	216
Hazardous Pedestrian Behavior	2	146	1		1	150
Other Driver Conditions, Glasses, Helmet, Etc.	17	15	2	3		37
Accident, Fail to Make Identification	1					1
Vehicle Registration & Permit Regulations	1355	789	182	142		2510
All Other Non-Traffic Offenses	45	89	19	89	78	320
TOTALS	14587	11024	2068	693	1037	29409

UNITED STATES PARK POLICE FORCE ACTIVITY REPORT

1974

YEAR

ACTIVITIES	OFFICE OF THE CHIEF		OPERATIONS DIVISION				SERVICES DIVISION		FORCE TOTAL		
	POLICE	CIV.	UNIFORMED	C.I.B.	GUARD	CIV.	POLICE	CIV.	POLICE	GUARD	CIV.
Arrest Made	4		2670	84			39		2797		
Moving TVN's	8		28525	11			220		28764		
Non Moving			46598	51			221		46870		
Cases Assgn.	114		49366	1326			277		51083		
Courtesy Tgs	1		30630	4			73		30708		
<u>HOURS WORKED</u>											
Special Duty	2344	12	100184	3667	85	121	4882	516	111077	65	64
Court	838		9850	1620		12	367		12675		
Writing Rept.	2233		32556	4867	8	1	883	17	40539	8	
Office Duty	26214	5523	135001	8576	4289	15076	63641	29020	233432	4177	496
Other Duty	4481	59	47776	2168	872	4685	4643	3098	59068	872	78
Patrol	1165		333007	2524	81530		548		337244	81514	
Traf. Control	9		18237	20	6697		317		18583	6693	
Accid. Inves.	2		4096	270			9		4377		
Crim. Inves.	498		8653	15176			50		24377		
Other Inves.	1740		8270	460			610		11080		
Training	1109	196	131933	4323	783	201	21071	665	158436	745	10
Vehic. Maint.	40		18231	184	60	20	589	3249	19044	60	32
TOTAL HOURS	40673	5790	847794	43855	94324	20116	97610	36565	1029932	94134	624
<u>HOURS OFF DUTY</u>											
Day Off	17480	2833	362474	18912	40668	11536	41744	16884	440610	40668	312
Annual Leave	3262	669	54179	3368	6818	1537	8302	2923	69111	6818	51
Sick Leave	796	176	31770	1335	4473	912	3317	1773	37218	4473	28
Comp. Leave	611		15766	1751	52	49	1283	163	19411	52	2
Other Leave	1245	211	20442	1028	5337	2174	2515	2258	25230	5337	46
TOTAL LEAVE	23394	3889	484631	26394	57348	16208	57161	24001	591580	57348	440
<u>HRS. O.T. PERIOD</u>											
Compensatory	611		14949	1846	34	41	1083	137	18489	34	1
Monetary	1303	26	64276	2668	7520	787	7070	1216	75317	7520	20

PERSONS CHARGED

PART I OFFENSES	ADULT	JUVENILE	TOTAL
Manslaughter by Negligence -----	1		1
Rape -----	8	9	17
Robbery -----	18	64	82
Assault -----	46	45	91
Burglary -----	16	10	26
Larceny (Except Auto Theft)			
a. \$100.00 and over in value -----	35	7	42
b. Under \$100.00 in value -----	7	49	56
Auto Theft -----	36	43	79
TOTAL PART I	167	227	394
PART II OFFENSES	ADULT	JUVENILE	TOTAL
Arson -----		3	3
Stolen Property (Buy, Rec. & Possess.)--	25	23	48
Weapons -----	63	27	90
Sex Offenses -----	14	13	27
Narcotic Laws -----	63	103	166
Liquor Laws -----	140	39	179
Drunkenness -----	11	8	19
Disorderly Conduct -----	214	97	311
Driving Under Influence -----	438	13	451
Road & Driving Laws -----	22,737	97	22,834
Parking Violations -----	46,629	3	46,632
Traffic & Motor Vehicle Laws -----	3,510	121	3,631
Offense Against Family -----	1		1
Vandalism -----	18	80	98
All Other Offenses -----	329	236	565
Gambling -----	4	1	5
Suspicion -----		78	78
TOTAL PART II	74,196	942	75,138
GRAND TOTAL	74,363	1,169	75,532

FIVE YEAR COMPARISON OF  
ACTUAL MAJOR OFFENSES

OFFENSES	1970	1971	1972	1973	1974
Murder -----	3	1	1	1	2
Negligent Manslaughter -----		1		1	
Rape -----	26	40	45	37	48
Robbery -----	175	172	161	256	294
Assault -----	166	104	135	144	193
Burglary, Breaking & Entering ---	113	75	65	46	106
Larceny, Grand -----	149	143	141	596	650
Larceny, Petit -----	635	430	339	63	218
Auto Theft -----	67	51	28	43	81
<b>TOTAL</b>	<b>1,334</b>	<b>1,017</b>	<b>915</b>	<b>1,187</b>	<b>1,592</b>

PART I OFFENSES REPORTED,  
BY CLASSIFICATION

1 CLASSIFICATION OF OFFENSES (PART I CLASSES)	2 OFFENSES REPORTED OR KNOWN TO POLICE (INCLUDE "UNFOUNDED" AND ATTEMPTS)	3 UNFOUNDED, I.E., FALSE OR BASELESS COMPLAINTS	4 NUMBER OF ACTUAL OFFENSES (COLUMN 2 MINUS COLUMN 3) (INCLUDE ATTEMPTS)	5 NUMBER OF OFFENSES CLEARED BY ARREST THIS MONTH	
				a TOTAL OFFENSES CLEARED	b BY ARREST OF PERSONS UNDER 18 (INCLUDED IN 5a)
<b>1. CRIMINAL HOMICIDE</b>					
a. MURDER AND NONNEGLIGENT MANSLAUGHTER	3	1	2		
b. MANSLAUGHTER BY NEGLIGENCE					
<b>2. FORCIBLE RAPE TOTAL</b>	<b>50</b>	<b>2</b>	<b>48</b>	<b>19</b>	<b>7</b>
a. RAPE BY FORCE	38	2	36	12	6
b. ASSAULT TO RAPE - ATTEMPTS	12		12	7	1
<b>3. ROBBERY TOTAL</b>	<b>300</b>	<b>6</b>	<b>294</b>	<b>48</b>	<b>26</b>
a. ARMED - ANY WEAPON	62	3	59	13	6
b. STRONG-ARM - NO WEAPON	238	3	235	35	20
<b>4. ASSAULT TOTAL</b>	<b>196</b>	<b>3</b>	<b>193</b>	<b>66</b>	<b>22</b>
a. GUN	22		22	9	4
b. KNIFE OR CUTTING INSTRUMENT	23	1	22	9	5
c. OTHER DANGEROUS WEAPON	46		46	16	9
d. HANDS, FISTS, FEET, ETC. - AGGRAVATED	91	2	89	31	3
e. OTHER ASSAULTS - NOT AGGRAVATED	14		14	1	1
<b>5. BURGLARY TOTAL</b>	<b>106</b>		<b>106</b>	<b>10</b>	<b>8</b>
a. FORCIBLE ENTRY	72		72	7	5
b. UNLAWFUL ENTRY - NO FORCE	25		25	3	3
c. ATTEMPTED FORCIBLE ENTRY	9		9		
<b>6. LARCENY - THEFT (EXCEPT AUTO THEFT)</b>					
a. \$50 AND OVER IN VALUE	653	3	650	38	15
b. UNDER \$50 IN VALUE	221	3	218	12	7
<b>7. AUTO THEFT</b>	<b>83</b>	<b>2</b>	<b>81</b>	<b>5</b>	<b>2</b>
<b>GRAND TOTAL</b>	<b>1612</b>	<b>20</b>	<b>1592</b>	<b>198</b>	<b>87</b>

PART I OFFENSES REPORTED,  
BY MONTH & LOCATION

LOCATION	JAN	FEB	MAR	APR	MAY	JUN	JUL	AUG	SEP	OCT	NOV	DEC	TOTAL
DISTRICT 1 (Sub-Total)	23	17	22	60	127	59	115	66	36	39	30	39	633
09 City Streets, D.C.				3	2	1		3	3	1	3	3	19
13 Constitution Ave, D.C.				1	1		3	1	2				8
15 Dupont Circle, D.C.			2			1	1	1	3	1	1	1	11
17 East Potomac, D.C.	6	4	1	5	5	8	12	12	4		5	2	64
19 Ellipse, D.C.	1	2		5	3	5	6	3	2	7	1	4	39
20 JFK Center, D.C.	5	5	12	6	6	11	7	6	3	7	8	4	80
29 Franklin Park, D.C.	1			2	2	2	12	5	3	4	2	6	39
31 Marion & Folger					1								1
37 Lafayette Square					1	1		1		1		2	6
39 Lincoln Park				2	1	1			1			1	6
41 Mall	6	3	7	15	14	23	21	20	14	12	5	9	149
47 Mount Vernon Square													
58 West Potomac Park	1	2		7	2	2	32	6		3	3	1	59
69 Washington Monument Grnd	3	1		14	89	4	21	8	1	3	2	6	152
DISTRICT 2 (Sub-Total)	5	6	10	6	17	24	33	25	8	21	9	12	176
06 C&O Canal, Md.	2				1	3	4	2			1		13
11 Columbia Island, D.C.		1	1			2	3	2		4		1	14
16 City Streets, Va.													
22 Great Falls, Md.	1			1	3	2	2	1	1	2	1	1	15
25 Fort Hunt, Va.					2	1	1	4				2	10
28 Jones Point, Va.					1								1
32 Great Falls, Va.			1			2	1	3		3			10
33 G.W.M.P., Va.	2	3	6	5	9	10	14	9	6	11	6	4	85
36 Arlington, Cemetery, Va.			1			1	2	1					5
38 G.W.M.P., D.C. (Adj C&O)					1	1							2
40 G.W.M.P., Md.		1					1	3	1	1		3	10
52 Wolf Trap Farm, Va.		1	1			2	5				1	1	11
63 Roosevelt Island, D.C.													
DISTRICT 3 (Sub-Total)	10	11	12	35	25	26	48	62	13	17	10	12	281
07 C&O Canal, D.C.				2	3	1	2	1		2			11
43 Meridian Hill, D.C.	3	2		3	4	1	2	6	2	2	1	1	27
45 Montrose Park, D.C.			1			2				2			5
49 Palisades, D.C.					1			1					2
57 Reservation West, D.C.	1	3	2	4	4	3	8	13	3	2	4	3	50
59 Rock Creek Park, D.C.	4	3	8	12	6	12	30	38	7	8	5	7	140
61 Rock Creek Parkway, D.C.	2	3	1	14	7	7	6	3	1	1		1	46
DISTRICT 4 (Sub-Total)	6	7	7	9	7	14	13	1	8	5	5	3	85
03 Balt-Wash Parkway, Md.	1	2	5	2	4	6	7		3	1	4	2	37
05 Agric. Resc. Center, Md.	5	1	2	1	3	1	3	1	2	2	1	1	23
08 Catocin, Md.													
12 City Streets, Md.		2		1		5	2		3	2			15
34 Greenbelt Park, Md.		2		5		2	1						10
DISTRICT 5 (Sub-Total)	3	5	6	18	16	17	36	30	21	14	13	7	186
01 Anacostia Park, D.C.	2		1	2	6	5	21	17	5		1	2	62
10 RFK Stadium, D.C.		1		3	1	1	2	4	1	3	9	4	29
21 Fort Dupont, D.C.		1	1	3	3	2	3	4	1	2	2		22
23 Fort Foote, Md.				1		1	1		1	1			5
27 Fort Washington, Md.		1	2	4	4	3	2	2	6	4	1		29
30 Piscataway, Md.													
55 Reservation East, D.C.	1	2	1	3	2	4	7	3	6	4			33
65 Stanton Park, D.C.												1	1
68 Suitland Parkway, Md.			1	2		1			1				5
NEW YORK FIELD OFFICE			1	5	32	31	47	11	18	16	17	14	192
SAN FRANCISCO FIELD OFFICE				5	7	11	6	7	5	4	6	8	59
TOTAL	47	46	58	138	231	182	298	202	109	116	90	95	1612
UNFOUNDED			2	2	4	1	1	1	2	7			20
GRAND TOTAL	47	46	56	136	227	181	297	201	107	109	90	95	1592



PART II OFFENSES REPORTED;  
BY CLASSIFICATION

CLASSIFICATION	D.C.	MD.	VA.	N.Y.	CALIF.	TOTAL
Arson -----	4			4	1	9
Vandalism -----	292	168	76	378	75	989
Stolen Property -----	18	9	4	25	1	57
Weapons -----	31	42	21	13	3	110
Sex Offenses (Other than Rape) -	25	7	6	20	5	63
Narcotic and Drug Laws -----	29	42	12	6	1	90
Liquor Laws -----	3	17	11		1	32
Drunkenness -----	292	52	15	3	3	365
Disorderly -----	198	44	53	131	5	431
Vagrancy -----						
Gambling -----	1			5		6
Driving Under Influence -----	58	302	70	1		431
Road and Driving Violations ----	666	1,172	164	389	93	2,484
Parking Violations -----	521	49	31	658	18	1,277
Suspicious Persons -----	609	244	133	125	63	1,174
All Other Offenses -----	306	197	39	919	86	1,547
Fraud -----					1	1
Embezzlement -----	1					1
<b>TOTAL</b>	<b>3,054</b>	<b>2,345</b>	<b>635</b>	<b>2,677</b>	<b>356</b>	<b>9,067</b>

SERVICE INCIDENTS REPORTED,  
BY CLASSIFICATION

CLASSIFICATION	D.C.	MD.	VA.	NY.	CALIF.	TOTAL
Abandoned & Impounded Autos ----	351	351	150	185	14	1,051
Animals and Wildlife -----	161	187	39	233	53	673
Assist to Citizens -----	4,198	4,295	1,979	803	320	11,595
Assist to Other Departments ----	2,726	1,034	377	238	348	4,723
Bomb Threats -----	16	4			5	25
Deaths -----	15	2	3	2	4	26
Disaster -----					1	1
Unsecured Installations -----	719	362	63	297	172	1,613
Damage Govt. Property (Non-Malicious only) -----	58	24	5		10	97
Fires -----	98	77	28	367	20	590
Hazardous Conditions -----	200	93	81	362	45	781
Athletic -----	10			4	1	15
Park Maintenance Needed -----	1,280	868	335	694	146	3,323
Permits -----	1			1		2
Personnel -----	484	63	31	7	28	613
Persons Missing & Found -----	121	18	7	112	10	268
Police Services -----	6,490	1,743	1,012	619	696	10,560
Property Lost and Found -----	2,675	208	178	77	56	3,194
Sick and Injured -----	529	85	89	464	40	1,207
Suicides -----	12		4	2	5	23
<b>TOTAL</b>	<b>20,144</b>	<b>9,414</b>	<b>4,381</b>	<b>4,467</b>	<b>1,974</b>	<b>40,380</b>

PART II OFFENSES REPORTED,  
BY MONTH & LOCATION

LOCATION	JAN	FEB	MAR	APR	MAY	JUN	JUL	AUG	SEP	OCT	NOV	DEC	TOTAL
DISTRICT 1 (Sub-Total)	172	113	156	122	149	124	166	146	134	150	127	131	1690
09 City Streets, D.C.	42	27	21	13	22	15	16	18	33	32	27	31	297
13 Constitution Ave, D.C.	12	16	26	5	18	7	15	15	16	15	19	18	182
15 Dupont Circle, D.C.	2		2	1	7	3	1	3	7	7		3	36
17 East Potomac, D.C.	14	1	5	13	15	13	14	20	5	10	12	8	130
19 Ellipse, D.C.	16	11	19	13	13	9	10	14	6	19	8	11	149
20 JFK Center, D.C.	1	5	3	10	3	5	3	5	10	5	4	6	60
29 Franklin Park, D.C.	3		4	6	1	4	16	4	3	3	3	1	48
31 Marion & Folger													
37 Lafayette Square	5	2	7	7	5	7	10	10	5	7	2	2	69
39 Lincoln Park				1	6	7	5	3	1	1	3		27
41 Mall	31	10	17	17	14	18	19	18	16	16	21	29	226
47 Mount Vernon Square	1								1				2
58 West Potomac Park	26	28	27	25	20	23	40	26	21	25	20	15	296
69 Washington Monument Grnd	19	13	25	11	25	13	17	10	10	10	8	7	168
DISTRICT 2 (Sub-Total)	54	46	72	79	52	71	77	58	71	94	67	53	794
06 C&O Canal, Md.		2	3	1	1	2	2	1	2	3			17
11 Columbia Island, D.C.	3	3		5		2	8	2	6	4	5	4	42
16 City Streets, Va.		2	1	1		4		1			1		10
22 Great Falls, Md.				2	1		2		1	2			8
25 Fort Hunt, Va.	7	6	13	8	2	11	10	3	15	17	3	4	99
28 Jones Point, Va.		1		1		5		1	1	1	1		11
32 Great Falls, Va.	5	3	5	3	2	3		5	2	7	2	1	38
33 G.W.M.P., Va.	30	21	36	45	38	39	48	34	35	51	44	25	446
36 Arlington, Cemetery, Va.			1	1		1		2				1	6
38 G.W.M.P., D.C. (Adj C&O)									2			1	3
40 G.W.M.P., Md.	8	8	9	8	4	2	4	7	5	8	11	15	89
52 Wolf Trap Farm, Va.	1		4	4	4	2	3	2	2	1		2	25
63 Roosevelt Island, D.C.													
DISTRICT 3 (Sub-Total)	55	50	64	88	61	78	101	112	63	54	47	41	814
07 C&O Canal, D.C.	3	1		4	2			2		1	4		17
43 Meridian Hill, D.C.	1	1	6	1	7	4	2	2		4			28
45 Montrose Park, D.C.				3	4	5	4	1	6	10	1		34
49 Palisades, D.C.		1			5	1			3	1			11
57 Reservation West, D.C.	4	6	6	14	8	19	21	16	16	9	9	9	137
59 Rock Creek Park, D.C.	23	27	35	37	25	33	60	79	31	12	22	21	405
61 Rock Creek Parkway, D.C.	24	14	17	29	10	16	14	12	7	17	11	11	182
DISTRICT 4 (Sub-Total)	105	119	116	141	134	170	186	149	172	165	152	124	1733
03 Balt-Wash Parkway, Md.	95	110	100	112	111	145	168	132	158	144	136	118	1529
05 Agric. Resc. Center, Md.	5	6	11	12	13	11	12	7	4	10	7	3	101
08 Catocin, Md.	1												1
12 City Streets, Md.	1		1	2	1	3		2	4	6	3	1	24
34 Greenbelt Park, Md.	3	3	4	15	9	11	6	8	6	5	6	2	78
DISTRICT 5 (Sub-Total)	69	79	114	77	83	86	81	94	75	88	75	82	1003
01 Anacostia Park, D.C.	3	8	13	10	18	12	21	32	17	22	22	21	199
10 RFK Stadium, D.C.	1	1	1	2	2	1	1	5	4	2	5	2	27
21 Fort Dupont, D.C.	15	12	14	8	15	18	13	9	7	10	11	9	141
23 Fort Foote, Md.	2	1	1	1	2	3	1	4	1	2		3	21
27 Fort Washington, Md.		4	18	20	19	12	4	9	11	8	7	1	113
30 Piscataway, Md.		1	1		2			2	1	2	2		11
55 Reservation East, D.C.	15	18	19	11	7	7	14	7	6	7	7	19	137
65 Stanton Park, D.C.			1										1
68 Suitland Parkway, Md.	33	34	46	25	18	33	27	26	28	35	21	27	353
NEW YORK FIELD OFFICE			7	201	313	389	351	303	333	223	337	220	2677
SAN FRANCISCO FIELD OFFICE				38	49	59	50	32	28	22	36	42	356
GRAND TOTAL	455	407	529	746	841	977	1012	894	876	796	841	693	9067

TYPE OF OFFENSE	10 & Under	11-12	13-14	15	16	17	TOTAL
Rape -----			4	1		4	9
Robbery -----	7	11	21	6	12	7	64
Assault -----	4	8	7	5	9	12	45
Burglary -----		2	4	3		1	10
Larceny -----	4	8	11	10	14	9	56
Auto Theft -----	1	2	4	6	22	8	43
Arson -----	1	1	1				3
Stolen Property -----	2	2	7	5	5	2	23
Vandalism -----	13	16	22	14	7	8	80
Weapons -----	1	1	7	9	4	5	27
Sex Offenses -----			6	5	2		13
Narcotic Drug -----			8	20	34	41	103
Gambling -----						1	1
Driving Under Influence -----	1				6	6	13
Liquor Laws -----			4	7	9	19	39
Drunkenness -----					6	2	8
Disorderly -----	4	4	8	21	28	32	97
Vagrancy -----							
All Other (Except Traffic) --	12	8	27	39	48	73	207
Curfew & Loitering Laws -----				2	2		4
Run-Aways -----	2	1	12	5	2	3	25
Suspicion -----	3	4	18	15	19	19	78
Total	55	68	171	173	229	252	948
Traffic Violations	4	17	36	48	53	63	221
GRAND TOTAL	59	85	207	221	282	315	1169

TYPE OF OFFENSE	1970	1971	1972	1973	1974
Arson -----					3
Rape -----	4			1	9
Robbery -----	49	25	41	51	64
Assault -----	20	14	16	40	45
Burglary -----	10	7	17	3	10
Larceny -----	74	28	43	91	56
Auto Theft -----	49	30	28	40	43
Stolen Property -----	2	5	18	4	23
Vandalism -----	35	23	23	48	80
Weapons -----	11	20	22	19	27
Sex Offenses -----		3	1	4	13
Narcotic Drug -----	58	55	53	68	103
Liquor Laws -----	25	9	13	13	39
Gambling -----					1
Disorderly -----	116	89	72	57	97
Vagrancy -----			1		
Drunkenness -----	4	6	5	1	8
Curfew & Loitering Laws -----	63	6	2	6	4
Run-Aways -----	53	45	21	26	25
Truancy -----	65	21			
Driving Under the Influence-----	1		1	8	13
All Other (Except Traffic)--	73	150	117	169	207
Suspicion -----	7	12	39	46	78
Total	719	548	533	695	948
Traffic Violations	82	96	74	99	221
GRAND TOTAL	801	604	607	794	1,169

SERVICE INCIDENTS REPORTED,  
BY MONTH & LOCATION

LOCATION	JAN	FEB	MAR	APR	MAY	JUN	JUL	AUG	SEP	OCT	NOV	DEC	TOTAL
DISTRICT 1 (Sub-Total)	1079	1168	1174	1272	1188	1252	1419	1381	923	1046	922	1118	13942
09 City Streets, D.C.	239	265	233	233	238	219	211	295	205	248	261	261	2908
13 Constitution Ave, D.C.	27	23	44	29	31	25	43	54	30	54	51	56	467
15 Dupont Circle, D.C.	7	2	5	4	5	5	2	2	17	6	8	6	69
17 East Potomac, D.C.	44	37	63	91	70	88	102	90	56	83	51	60	835
19 Ellipse, D.C.	229	227	243	277	258	276	252	209	131	106	66	191	2465
20 JFK Center, D.C.	289	344	306	267	236	244	211	202	169	249	245	284	3046
29 Franklin Park, D.C.	5	3	2	7	5	3	10	16	8	6	4	3	72
31 Marion & Folger		1	1	2	3								7
37 Lafayette Square	14	18	8	17	10	45	20	20	20	22	18	13	225
39 Lincoln Park	5	1	2	4	7	15	30	12	5	4		1	86
41 Mall	48	49	58	66	62	69	56	109	46	60	45	59	727
47 Mount Vernon Square													
58 West Potomac Park	109	128	128	191	120	169	301	204	179	142	134	112	1917
69 Washington Monument Grnd	63	70	81	84	143	94	181	168	57	66	39	72	1118
DISTRICT 2 (Sub-Total)	406	346	440	492	417	509	482	549	431	370	412	409	5263
06 C&O Canal, Md.	7	1	8	6	3	6	7	7	7	2	4	4	62
11 Columbia Island, D.C.	27	11	11	25	25	11	15	26	23	12	15	16	217
16 City Streets, Va.	19	26	22	23	14	19	17	13	13	13	17	20	216
22 Great Falls, Md.	2	2	9	5	6	7	5	5	2	2	3	7	55
25 Fort Hunt, Va.	11	19	15	23	16	17	25	9	16	12	12	7	182
28 Jones Point, Va.				2		1	3	3	1	2	3	3	18
32 Great Falls, Va.	16	14	16	17	7	15	16	15	1	22	19	21	179
33 G.W.M.P., Va.	270	224	270	317	282	316	282	340	295	264	312	264	3436
36 Arlington, Cemetery, Va.	2	1		4	2	4	6	2	6		1		28
38 G.W.M.P., D.C. (Adj C&O)	2	1	2		3	1			5	2		3	19
40 G.W.M.P., Md.	42	39	72	60	47	42	27	45	40	32	22	59	527
52 Wolf Trap Farm, Va.	8	8	14	10	12	68	79	84	22	7	4	5	321
63 Roosevelt Island, D.C.			1			2							3
DISTRICT 3 (Sub-Total)	324	272	322	371	362	342	456	391	302	268	313	255	3978
07 C&O Canal, D.C.	7	2	9	10	6	7	10	8	6	4	2	1	72
43 Meridian Hill, D.C.	4	4	5	14	15	5	19	17	9	3	6	1	102
45 Montrose Park, D.C.	4	2	3	6	14	10	8	5	4	7	2	1	66
49 Palisades, D.C.	5	4	2	4	5	3	1	3	6	6	8	2	49
57 Reservation West, D.C.	84	45	64	82	82	76	106	101	54	27	52	44	817
59 Rock Creek Park, D.C.	118	106	137	140	142	140	206	175	148	135	138	116	1701
61 Rock Creek Parkway, D.C.	102	109	102	115	98	101	106	82	75	86	105	90	1171
DISTRICT 4 (Sub-Total)	537	592	761	722	732	728	615	689	598	623	469	520	7586
03 Balt-Wash Parkway, Md.	450	486	595	555	548	560	462	555	477	488	378	412	5966
05 Agric. Resc. Center, Md.	17	28	59	35	40	46	38	30	35	36	29	23	416
08 Catoclin, Md.	1					1		1	1				4
12 City Streets, Md.	41	40	41	62	39	42	53	46	29	47	38	56	534
34 Greenbelt Park, Md.	28	38	66	70	105	79	62	57	56	52	24	29	666
DISTRICT 5 (Sub-Total)	211	247	258	256	248	272	305	343	213	240	230	181	3004
01 Anacostia Park, D.C.	37	39	53	70	65	71	83	122	47	53	58	31	729
10 RFK Stadium, D.C.	13	19	7	12	27	17	14	39	29	31	19	18	245
21 Fort Dupont, D.C.	28	29	31	36	34	59	86	37	37	37	35	15	464
23 Fort Foote, Md.	16	17	13	4	13	8	8	11	10	8	9	6	123
27 Fort Washington, Md.	6	13	20	24	20	10	12	11	15	19	7	5	162
30 Piscataway, Md.	6	4	3	2	3	3	3	4	1		1	4	34
55 Reservation East, D.C.	30	33	42	30	22	30	38	27	19	29	41	24	365
65 Stanton Park, D.C.				1	2	5	3	3	1	3			18
68 Suitland Parkway, Md.	75	93	89	77	62	69	58	89	54	60	60	78	864
NEW YORK FIELD OFFICE			3	143	346	638	898	749	367	350	544	429	4467
SAN FRANCISCO FIELD OFFICE				219	228	213	322	253	186	207	199	147	1974
ALL OTHER REGIONS (Sub-Total)	9	10	15	17	24	18	27	17	15	4	7	3	166
GRAND TOTAL	2566	2635	2973	3492	3545	3972	4524	4372	3035	3108	3096	3062	40380

FIVE YEAR COMPARISON  
OF TRAFFIC ACCIDENTS

CLASSIFICATION	1970	1971	1972	1973	1974
<b>MOTOR VEHICLE ACCIDENTS</b>					
Property Damage -----	2,764	2,938	3,091	3,058	2,617
Injury (Non-Fatal) -----	595	552	586	551	504
Fatal -----	22	26	19	26	15
TOTAL	3,381	3,516	3,696	3,635	3,136
<b>TYPE OF ACCIDENT</b>					
Motor Vehicle - Motor Vehicle ----	2,661	2,695	2,913	2,848	2,487
Motor Vehicle - Pedestrian -----	32	43	30	35	27
Motor Vehicle - Fixed Object ----	571	770	735	615	514
Other (Non-Collision) -----	117	8	18	137	108
TOTAL	3,381	3,516	3,696	3,635	3,136
Persons Killed (Non-Pedestrian) ----	20	21	19	21	14
Persons Injured (Non-Pedestrian) ---	878	809	913	528	717
Pedestrians Killed -----	4	6	3	5	1
Pedestrians Injured -----	27	39	26	23	23
TOTAL KILLED -----	24	27	22	26	15
TOTAL INJURED -----	905	848	939	551	740

TRAFFIC ACCIDENTS BY LOCATION

LOCATION	PROPERTY DAMAGE ACCIDENTS	PERSONAL INJURY ACCIDENTS	FATAL ACCIDENTS	TOTAL
<u>DISTRICT OF COLUMBIA</u>				
Anacostia -----	20	10		30
Baltimore-Washington Parkway ---	1			1
C & O Canal -----	1			1
Areas Outside Park -----	38	7		45
Columbia Island -----	113	8	1	122
Constitution Avenue -----	156	14		170
East Potomac Park -----	27	10		37
Ellipse -----	54	5		59
Fort Dupont Park -----	13	5		18
Mall -----	41	2		43
Reservation East -----	4			4
Reservation West -----	1			1
Rock Creek Park -----	169	60	3	232
Rock Creek Parkway -----	180	21		201
JFK Center -----	25			25
Washington Monument Grounds ----	108	20		128
West Potomac Park -----	386	31		417
G.W.M.P., Washington, D.C. -----	1			1
R.F.K. Stadium, D.C. -----	12	1		13
Palisades -----	1			1
TOTAL	1,351	194	4	1,549
<u>STATE OF MARYLAND</u>				
Baltimore-Washington Parkway ---	497	128	6	631
C & O Canal -----	1			1
Fort Washington -----	8	1		9
G.W.P. (Md.)-----	42	10	1	53
Suitland Parkway -----	102	35		137
Agric. Research Center -----	32	13		45
Greenbelt Park -----	5	2		7
Great Falls -----	4			4
Areas Outside Park -----	4			4
Fort Foote -----	3	1		4
TOTAL	698	190	7	895
<u>STATE OF VIRGINIA</u>				
G.W.M.P. -----	481	107	3	591
Fort Hunt -----	8	4		12
Great Falls -----	2	1		3
Wolf Trap Farms -----	9			9
Areas Outside Park -----	2			2
Arlington Cemetery -----	5	1		6
TOTAL	507	113	3	623
<u>STATE OF NEW YORK</u>				
Breezy Point	2			2
Staten Island	7	1	1	9
Jamaica Bay	7			7
TOTAL	16	1	1	18
<u>STATE OF NEW JERSEY</u>				
Sandy Hook	19	1		20
TOTAL	19	1		20
<u>STATE OF CALIFORNIA</u>				
Waterfront Park	4			4
San Francisco Headlands	1			1
Marin Headlands	11	4		15
Fort Point NHS	9			9
Areas Outside Park	1	1		2
TOTAL	26	5		31
GRAND TOTAL	2,617	504	15	3,136

TRAFFIC ACCIDENT SURVEY

CLASSIFICATION	DISTRICT OF COLUMBIA	STATE OF MD.	STATE OF VA.	STATE OF NY.	STATE OF CALIF.	TOTAL
MOTOR VEHICLE ACCIDENTS						
Property Damage -----	1,351	698	507	35	26	2,617
Injury -----	194	190	113	2	5	504
Fatal -----	4	7	3	1		15
TOTAL -----	1,549	895	623	38	31	3,136
TYPE OF ACCIDENT						
Motor Vehicle - Motor Vehicle -----	1,322	645	481	29	10	2,487
Motor Vehicle - Pedestrian -----	16	8	2	1		27
Motor Vehicle - Fixed Object -----	186	190	121	7	10	514
Other (Non Collision) -----	25	52	19	1	11	108
TOTAL -----	1,549	895	623	38	31	3,136
PERSONS KILLED AND INJURED						
Persons Killed (Non-Pedestrian) ---	4	6	3	1	0	14
Pedestrians Killed -----	0	1	0	0	0	1
Persons Injured (Non-Pedestrian) --	277	275	154	4	7	717
Pedestrians Injured -----	16	5	2	0	0	23
TOTAL KILLED -----	4	7	3	1	0	15
TOTAL INJURED -----	293	280	156	0	7	736

AGES OF OPERATORS INVOLVED

AREA	18-20	21-24	25-29	30-34	35-39	40-44	45-49	50-54	55-59	60 & Over	TOTAL
D.C.											
Male	195	332	336	335	201	194	174	139	91	281	2,278
Female	73	127	111	102	55	43	38	37	32	68	686
MARYLAND											
Male	211	138	182	164	108	104	110	61	38	127	1,243
Female	68	59	62	50	30	25	25	24	8	23	374
VIRGINIA											
Male	144	83	112	105	85	84	86	67	39	92	897
Female	62	37	38	42	11	16	22	12	10	24	274
NEW YORK											
Male	15	13	4	7	1	4	1			1	46
Female	5	1	3		1	1					11
CALIFORNIA											
Male	6	6	11	4	1	1	2	1	1	4	37
Female							1	1	1		3
TOTAL											
Male	571	572	645	615	396	387	373	268	169	505	4,501
Female	208	224	214	194	97	85	86	74	51	115	1,348
TOTAL	779	796	859	809	493	472	459	342	220	620	5,849

TRAFFIC ACCIDENTS  
by  
MONTH, DAY OF WEEK & HOUR

CLASSIFICATION	JAN	FEB	MAR	APR	MAY	JUN	JUL	AUG	SEPT	OCT	NOV	DEC	TOTAL
Property Damage Accidents	133	142	170	228	228	245	242	266	197	247	259	260	2,617
Personal Injury Accidents	25	22	33	46	40	54	53	58	36	39	46	52	504
Fatal Accidents	1	1	5	1	1	1		2	2			1	15
TOTAL	159	165	208	275	269	300	295	326	235	286	305	313	3,136

DAY OF WEEK	D.C.	%	MD.	%	VA.	%	N.Y. & N.J.	%	CALIF.	%	TOTAL	PERCENT
Monday	215	14%	105	12%	89	14%	6	16%	5	16%	420	13%
Tuesday	218	14%	116	13%	86	14%	9	24%	1	3%	430	14%
Wednesday	239	15%	117	13%	76	13%	1	3%	2	7%	435	14%
Thursday	231	15%	97	11%	101	16%	3	7%	1	3%	433	14%
Friday	259	17%	191	21%	101	16%	6	16%	6	19%	563	18%
Saturday	192	12%	155	17%	88	14%	6	16%	9	29%	450	14%
Sunday	195	13%	114	13%	82	13%	7	18%	7	23%	405	13%
TOTAL	1,549	100%	895	100%	623	100%	38	100%	31	100%	3,136	100%

HOUR OF DAY	TOTAL	A.M. HOURS	P.M. HOURS
12 - 01 -----	250	112	138
01 - 02 -----	233	89	144
02 - 03 -----	270	81	189
03 - 04 -----	302	53	249
04 - 05 -----	310	30	280
05 - 06 -----	288	29	259
06 - 07 -----	258	66	192
07 - 08 -----	264	127	137
08 - 09 -----	318	219	99
09 - 10 -----	239	131	108
10 - 11 -----	203	103	100
11 - 12 -----	201	106	95
TOTAL	3,136	1,146	1,990



PHOTOGRAPHS AND TEXT COMPILED AND EDITED BY PLANNING STAFF  
GRAPHICS, DESIGN: PVT. M. CRONAN  
FORCE PHOTOGRAPHER: HERMAN GAINES  
STATISTICS: GEORGIA L. GOLDEN

