



Pack Animal Trails and Overnight Camps

A Unique Experience

Traveling along park trails with pack animals is an exciting way to see Redwood National and State Parks. This brochure is meant to assist you in planning a safe, enjoyable, and low-impact trip.

Ride Responsible

Feed for stock must be in the form of pellets or certified weed-free feed.
 Camp only in backcountry camps designated for pack animals.
 Pack animals may not freely graze park vegetation.
 Pack animals must be corralled, tied, picketed, or hobbled when unattended.

Park Regulations

Pack animals (horses, ponies, mules, burros, goats, and llamas) are welcomed on designated park trails and beaches. Pets, firearms, motorized vehicles, and hunting are prohibited on park trails. Mushroom collecting is illegal. Fires are permitted in designated fire pits only. Proper food storage while in bear country is required by law. Utilize bearproof food lockers or obtain food storage canisters at Kuchel Visitor Center. Overnight stay limit is five consecutive days, 15 days per calendar year. Eight people per site.

Safety

Parks are wild places. Prepare for the unexpected and always check current conditions prior to your trip.
 -For up-to-date information on the Orick horse trails, call the Kuchel Visitor Center at (707) 465-7765.
 -For up-to-date information on other horse trails, call the park information line at (707) 465-7335.

Designated Pack Animal Trails

Trail	Access	General Description	Overnight Camp
Little Bald Hills Trail	Howland Hill Road (via Hwy 199, Hiouchi Calif.) -OR- South Fork Road (via Hwy 199, Hiouchi, Calif.)	A multi-use (hiker, biker, pack) trail. 9.5 miles one-way. Commonly accessed from Howland Hill Road. Connects to Paradise Trail/Sand Camp parking lot off of South Fork Road (U.S. Forest Service lands).	Yes, with free permit available at the Crescent City Info. Center (K and 2nd Street). Little Bald Hills backcountry camp is 3 miles in from the Howland Hill Road trailhead.
Mill Creek Horse Trail & Rellim Ridge Trail	Bertsch Street (via Howland Hill Road, Crescent City, Calif.) -OR- Hamilton Road (via Hwy 101, Crescent City, Calif.) on weekends ONLY.	A 10 mile loop trail with a 1.3 mile spur trail (Rellim Ridge). 3 designated picnic areas. Mill Creek stream crossings (fords) seasonally CLOSED for salmon spawning: North ford—October 15 to March 31. South ford—October 15 to May 31.	No.
Orick Horse Trails	Orick Rodeo Grounds, (via Hwy 101, Orick Calif.) inquire at the Kuchel Visitor Center for directions. A \$5 (day-use) self-pay parking fee is required at trailhead.	Four loops: Ridge loop —7 miles, McArthur Creek loop —14 miles (this loop has two picnic areas both with a hitching post, pit toilet, and picnic table), Elam Creek loop —20 miles, Forty-Four Creek loop —32 miles.	Yes, with free permit available at park visitor centers. Two overnight sites (Elam and 44 Camp). **44 Camp is currently open to BACKPACKERS ONLY at this time; no water is available.
Park Beaches	Varies, based on location.	Pack animals are allowed on Crescent, Gold Bluff, Hidden, and Freshwater beach.	No.

Designated Pack Animal Camps (free permit required)

Camp	General Description	Amenities	Environment
Little Bald Hills Camp	A multi-use (hiker, biker, pack) backcountry camp, 3 miles in from the Little Bald Hills Trailhead off Howland Hill Road.	Picnic tables, fire pits, bear proof lockers, pit toilet, corral, trough, and seasonal/non-potable water.	Old-growth redwood forest, mixed conifer forest, and prairies.
Elam Camp	A multi-use (hiker, pack) backcountry camp, 6 miles in from the Orick Horse Trailhead; Overnight trailhead parking fee required: \$10.	Picnic tables, fire pits, bear proof lockers, pit toilet, corral, trough, and seasonal/non-potable water.	Old-growth redwood forest and second growth/mixed conifer forest.
44 Camp	A multi-use (hiker, pack) backcountry camp, 17 miles in from Orick Horse Trailhead; Overnight trailhead parking fee required: \$10.	Picnic tables, fire pits, bear proof lockers, pit toilet, corral, and trough. No water.	Old-growth redwood forest and second growth/mixed conifer forest.

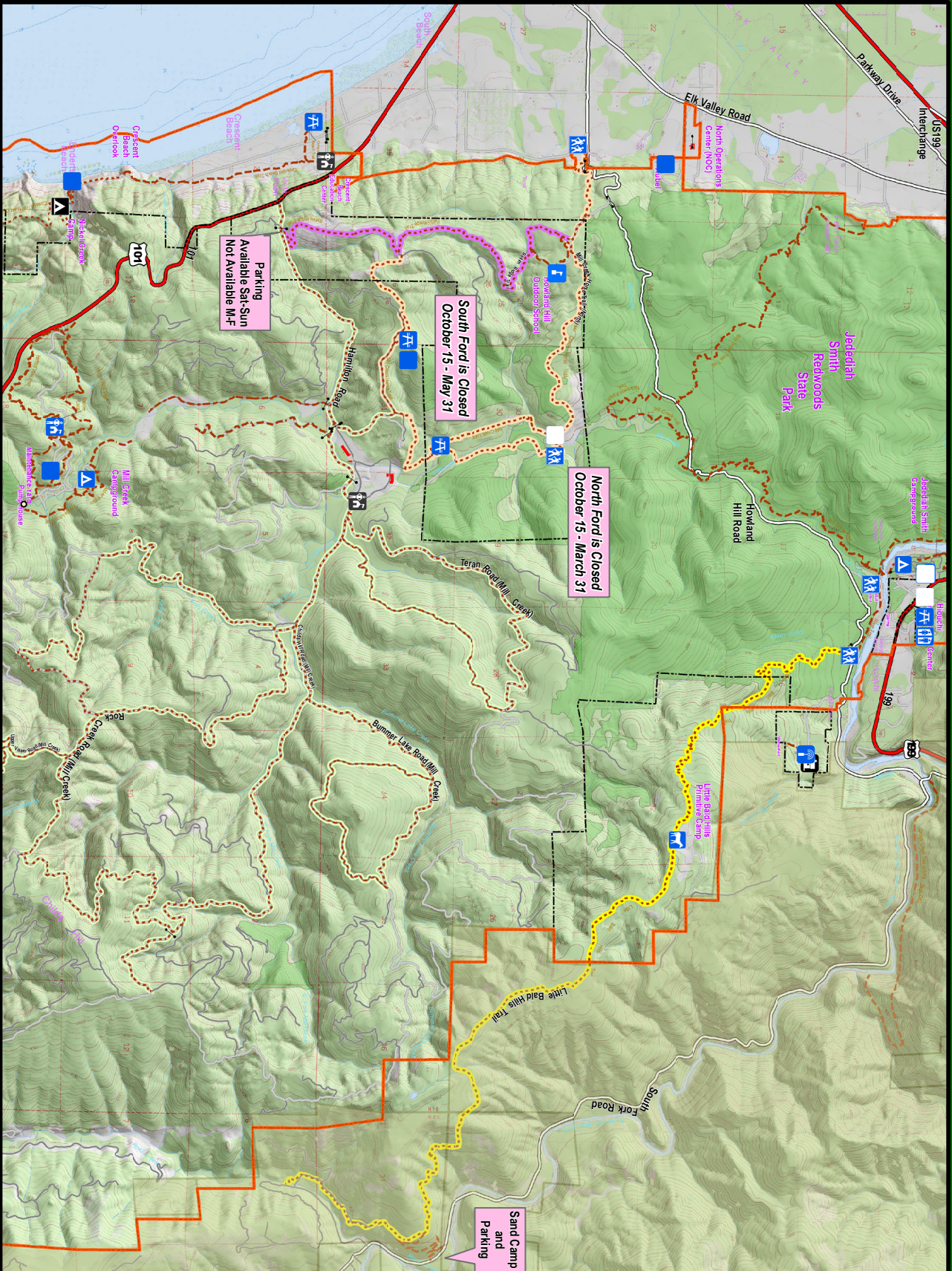
Little Bald Hills, Mill Creek, and Rellim Ridge Pack Animal Trails & Map

Trail	Access	General Description	Overnight Camp
Little Bald Hills Trail	Howland Hill Road (via Hwy 199, Hiouchi Calif.) -OR- South Fork Road (via Hwy 199, Hiouchi, Calif.)	A multi-use (hiker, biker, pack) trail. 9.5 miles one-way. Commonly accessed from Howland Hill Road. Connects to Paradise Trail/Sand Camp parking lot off of South Fork Road (U.S. Forest Service lands).	Yes, with free permit available at the Crescent City Info. Center (K and 2nd Street). Little Bald Hills backcountry camp is 3 miles in from the Howland Hill Road trailhead.
Mill Creek Horse Trail & Rellim Ridge Trail	Bertsch Street (via Howland Hill Road, Crescent City, Calif.) -OR- Hamilton Road (via Hwy 101, Crescent City, Calif.) on weekends ONLY.	A 10 mile loop trail with a 1.3 mile spur trail (Rellim Ridge). 3 designated picnic areas. Mill Creek stream crossings (fords) seasonally closed for salmon spawning: North ford—October 15 to March 31. South ford—October 15 to May 31.	No.

**Redwood National and State Parks
Del Norte Coast Redwoods State Park**

**National Park Service
U.S. Department of the Interior**

**California State Parks
Department of Parks and Recreation**



Parks are wild places. Prepare for the unexpected and always check current conditions prior to you trip.
-For up-to-date information on the Orick horse trails, call the Kuchel Visitor Center at (707) 465-7765.
-For up-to-date information other horse trails, call the park information line at (707) 465-7335.

Area highlighted **Monthly** at left

According to Northcoast Redwoods District policy, during wet or inclement weather, unpaved roads may be closed to all use.

Legend

- Hiking Trail
- Horse and/or Bicycle Trail
- Little Bald Hills Trail
- Rellim Ridge Trail
- Mill Creek Horse Trail
- Mill Creek Horse Trails
- Primary road
- Secondary road
- Tertiary road
- Other road (not drivable)
- Other Public Agency road
- Congressional Boundary
- State Park Lands
- Old Growth

0 0.375 0.75 1.5 Miles
 0 0.5 1 2 Kilometers

Horse Trails

RNSP North

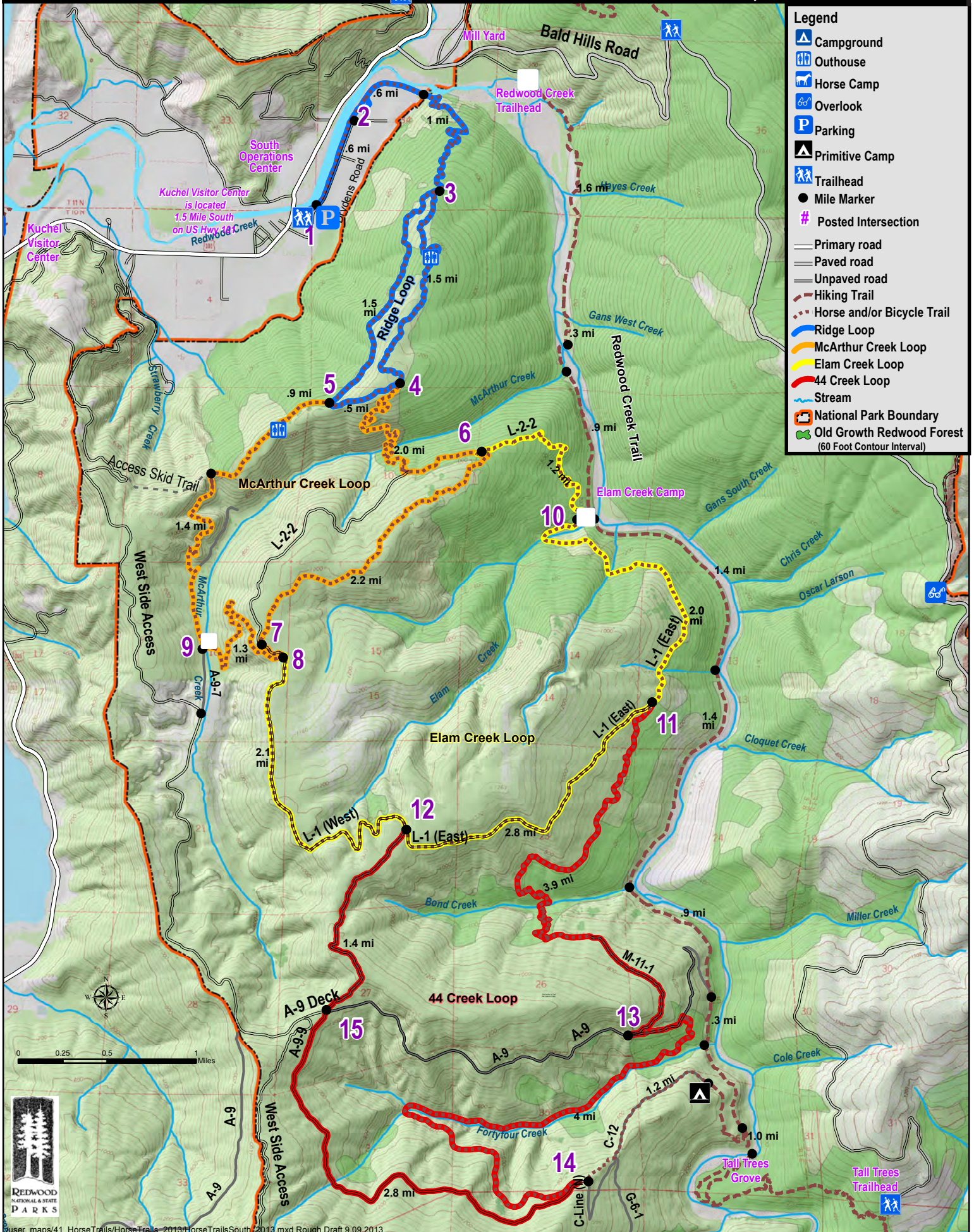
Orick Horse Trails

Trail	Access	General Description	Overnight Camp
Orick Horse Trails	Orick Rodeo Grounds, (via Hwy 101, Orick Calif.) inquire at the Kuchel Visitor Center for directions. A \$5 self-pay parking fee is required at trailhead.	Four loops: Ridge loop –7 miles, McArthur Creek loop –14 miles (this loop has two picnic areas both with a hitching post, pit toilet, and picnic table), Elam Creek loop –20 miles, Forty-Four Creek loop –32 miles.	Yes, with free permit available at Kuchel Visitor Centers (Orick, Calif.). Two overnight sites (Elam and 44 Camp). **44 Camp is open to BACKPACKERS ONLY at this time; no water is available.

Redwood National and State Parks
California

Horse Trails of Redwood National and State Parks
Lower Redwood Creek

National Park Service
U.S. Department of the Interior



Parks are wild places. Prepare for the unexpected and always check current conditions prior to you trip.
 -For up-to-date information on the Orick horse trails, call the Kuchel Visitor Center at (707) 465-7765.
 -For up-to-date information other horse trails, call the park information line at (707) 465-7335.