



ROCKY MOUNTAIN

NATIONAL PARK

Colorado

Rocky Mountain

NATIONAL PARK

COLORADO

OPEN ALL YEAR

Contents

Notch Top Mountain	Cover
Land of Lofty Mountains	5
Evidence of Glacial Action	7
Longs Peak	7
Natural Beauties	8
Fauna and Flora	8
Automobile Trips	11
Trail Trips	15
Distances to Principal Points of Interest	18

Events OF HISTORICAL IMPORTANCE

- 1820 Maj. Stephen H. Long, commanding an exploring party sent out by President Madison in 1819, first sighted Longs Peak. Park area frequented by Arapaho and Ute Indians.
- 1843 Rufus B. Sage, another explorer, visited the area and later published earliest known description in "Rocky Mountain Life, or Startling Scenes and Perilous Adventures in the Far West During an Expedition of Three Years."
- 1859 Joel Estes, the first white settler, entered park and in 1860 built first cabin.
- 1865 Charles F. Estes, first white child born in the park.
- 1868 First ascent of Longs Peak. The climb was made by William N. Byers, Maj. J. W. Powell, and five other men.
- 1868 Rocky Mountain Jim, adventurer and frontiersman, settled in area.
- 1869 Earl of Dunraven, famous English sportsman, first visited this area.
- 1871 The Hayden Geographical Survey, under Dr. E. V. Hayden, worked here.
- 1874 First stage established between Longmont and Estes Park.
- 1874 Albert Bierstadt, famous artist, first visited the region.
- 1876 First wedding in the park: Anna Ferguson and Richard Hubbell.
- 1878 First hotel built by Earl of Dunraven.
- 1881 First public school established and held in Elkhorn Lodge.

What To Do	22
Fishing	22
Horseback Riding and Camping	22
Winter Sports	22
Administration	24
Naturalist Service	24
Free Public Campgrounds	24
Park Season	25
How To Reach the Park	25
All-Expense Circle Trips	26
Transportation in the Park	26
Accommodations and Expenses	27
Hotels and Lodges on Park Lands	27
Private Hotels, Cottages, and Camps	28
References	28
Government Publications	30

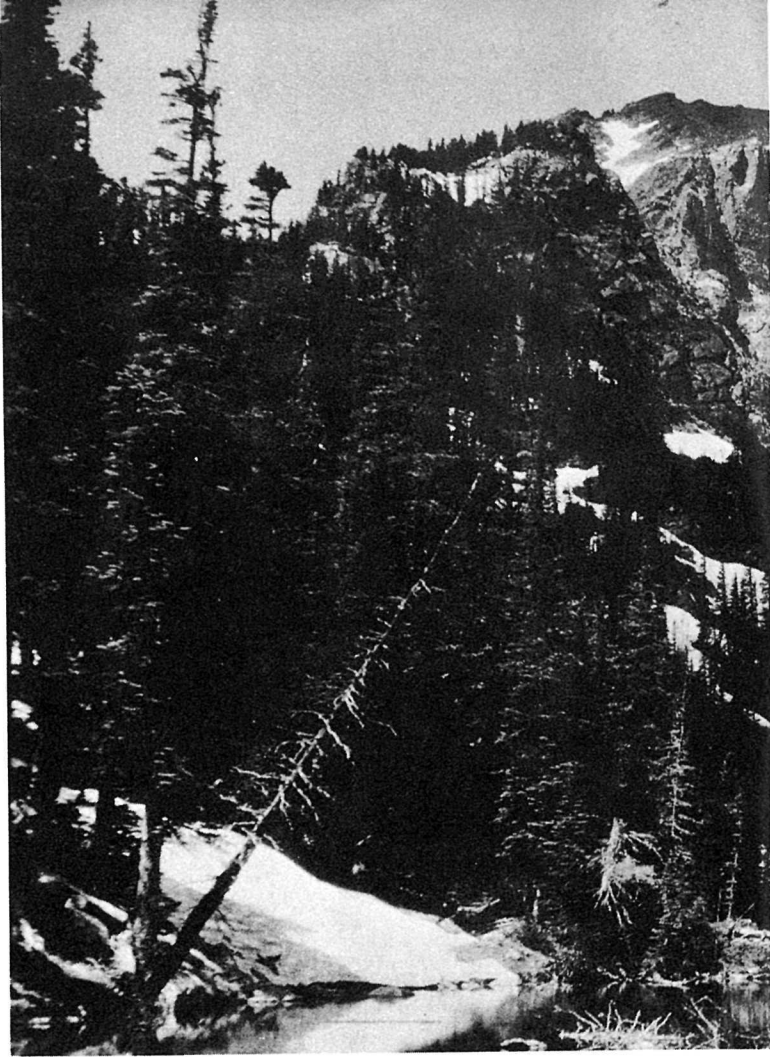
- 1881 The Denver, Utah & Pacific Railroad built to Lyons and projected to Pacific Ocean through Fall River and Milner Passes by Milner, chief engineer for the company.
- 1888 Enos A. Mills, pioneer of nature-guiding idea, settled at east base of Longs Peak.
- 1900 Bear Lake fire.
- 1904 Big Thompson Canyon road completed.
- 1907 Automobile stage line established between Estes Park and Loveland.
- 1909 Automobile stage line established between Estes Park and Lyons.
- 1912 Fall River road begun. Completed in 1920.
- 1915 Rocky Mountain National Park Act approved January 26.
- 1927 Bear Lake road completed.
- 1929 State of Colorado ceded exclusive jurisdiction to Federal Government.
- 1930 Never Summer Range area added to the park.
- 1932 Trail Ridge road opened.



UNITED STATES DEPARTMENT OF THE
INTERIOR - - - Harold L. Ickes, *Secretary*

NATIONAL PARK SERVICE
Arno B. Cammerer, *Director*

SHEER PEAKS
RISE ABOVE
PICTURESQUE
DREAM LAKE



LAND OF LOFTY MOUNTAINS

For many years the Front Range of the Rockies has been the mecca of the mountain lovers of this country. The name conjures up ideas of American mountain grandeur. In nobility, in calm dignity, in the sheer glory of stalwart beauty, there is no mountain group to excel the company of snow-capped veterans of all the ages which stands at everlasting parade behind its grim, helmeted captain, Longs Peak.

There is probably no other scenic neighborhood of the first order which combines mountain outline so bold with a quality of beauty so intimate and refined. To live in the valley in the ever-changing presence of these carved and tinted peaks is in itself satisfaction.

ROCKY MOUNTAIN NATIONAL PARK includes within its boundaries 405 square miles, or 259,411 acres, of the Front Range of the Rockies in north-central Colorado, about 50 miles in a straight line northwest of Denver. It was established by the act of Congress approved January 26, 1915, and its boundaries adjusted by the acts of Congress approved February 14, 1917, June 9, 1926, and June 21, 1930. Its eastern gateway is the beautiful valley village of Estes Park, from which easy and comfortable access is had up to the noblest heights and into the most picturesque recesses of the mountains.

Rocky Mountain National Park is one of the most accessible of our western national parks, being comparatively close to large centers of population in the East and Middle West.

This national park reaches lofty heights. The summer visitors who live at the base of the great mountains are 8,000 feet, or more than a mile and a half, above sea level; while the mountains themselves rise precipitously nearly a mile, and often even higher above the base level. Longs Peak, the highest of them all, rises 14,255 feet above sea level, and most of the other mountains in the Snowy Range, as it is sometimes called, are more than 12,000 feet high. There are 65 named mountains within the area of the park that reach altitudes of over 10,000 feet grouped as follows:

Over 14,000 feet	1	Between 11,000 and 12,000 feet . . .	13
Between 13,000 and 14,000 feet . . .	14	Between 10,000 and 11,000 feet . . .	10
Between 12,000 and 13,000 feet . . .	27		

Many of these peaks are shown on the map on pages 16 and 17.

The valleys on both sides of the Snowy Range and those which penetrate into its recesses are dotted with parklike glades clothed in a profusion of colorful wild flowers and watered with streams from the mountain snows and glaciers. Forests of evergreens and silver-stemmed aspen separate them.

The range lies, roughly speaking, north and south. The gentler slope is on the west. On the east side the descent from the Continental Divide is precipitous in the extreme. Precipitous drops of two or three thousand feet into rock-bound gorges carpeted with snow patches and wild flowers are common. Seen from the east-side valleys this range rises in daring relief, craggy in outline, snow spattered, awe inspiring.

In the northeast corner lies a spur from the Continental Divide, the Mummy Range, a tumbled majestic mountain mass which includes some of the loftiest peaks and one of the finest glaciers.

To the south of Longs Peak the country grows even wilder. The range is a succession of superb peaks. The southern park boundary unfortunately cuts arbitrarily through a superlative massing of noble snow-covered summits.

The west side, gentler in its slopes and less majestic in its mountain massings, is a region of loveliness and wildness diversified by splendid mountains, innumerable streams and lakes of great charm. Grand Lake, which has railroad connections nearby, is one of the largest natural lakes in Colorado and the deepest lake in this region.

One of the striking features of Rocky Mountain National Park is the easy accessibility of these mountain tops. One may mount a horse after early breakfast in the valley, ride up Flattop to enjoy one of the great views of the world, and be back for late luncheon. The hardy foot traveler may make better time than the horse on these mountain trails. One may cross the Continental Divide from the hotels of one side to the hotels

of the other between early breakfast and late dinner or motor between these points via the Trail Ridge Road in 2 hours.

EVIDENCE OF GLACIAL ACTION

One of the remarkable features of Rocky Mountain National Park is the legibility of the record left by the glaciers during the ages when America was in the making. The evidences of glacial action, in all their variety, make themselves apparent to even the most casual eye.

In fact, there is scarcely any part of the eastern side where some great moraine does not force itself upon the attention. One enormous moraine built up by an ancient glacier and rising with sloping sides nearly a thousand feet above the valley is so prominent that Moraine Park is named for it. From Longs Peak on the east side the Mills Moraine makes a bold curve which instantly draws questions from visitors.

There are several remnants of these mighty ice masses which can be seen at the present time. Three of the largest ice fields, Andrews, Rowe, and Tyndall Glaciers, are visited by many people each year, while the smaller glaciers, such as Taylor and Spragues, are also interesting.

In short, this park itself is a primer of glacial geology whose lessons are so simple, so plain to the eye, that they immediately disclose the key to one of nature's scenic secrets.

LONGS PEAK

The greatest of all the mountains in the park, Longs Peak, has a massive square head. It is a real architectural structure like an enormous column of solid rock buttressed up on four sides with long rock ledges. On the east side a precipice of 1,200 feet drops sheer from the summit into the wildest lake that one can possibly imagine. It is called Chasm Lake and there is only one month in the year when its surface is not at least partially frozen. Mount Meeker and Mount Lady Washington enclose it on the south and north, and snow fields edge its waters the year round.

In 1820 Maj. S. H. Long first saw the mountain that now bears his name. The report of his expedition records that on June 30 of that year his party caught their first glimpse of the Rocky Mountains, and particularly noted one peak, which they referred to as "the highest peak." Long's expedition followed up the valley of the Platte River, and his closest approach to the peak was at a distance of about 40 miles. Fremont found that the name Longs Peak was in general use among the fur hunters and pioneers in 1842. The first recorded ascent was in 1868, when it was climbed by W. N. Byers, Maj. J. W. Powell (who the following year made the first passage of the Colorado River), and five other men.

NATURAL BEAUTIES

A distinguishing feature of Rocky Mountain National Park is its profusion of precipice-walled canyons lying between lofty mountains. Like all the other spectacles of this favored region, they are readily accessible from the valley villages by trail, either afoot or on horseback.

Usually several lakes are found in each of these gorges. Ice-cold streams wander from lake to lake, watering wild flowers of luxuriance and beauty. There are few wilder and lovelier spots, for instance, than Loch Vale, 3,000 feet sheer below Taylor Peak. Adjoining it lies Glacier Gorge on the precipitous western slope of Longs Peak and enclosing a group of small lakes. These, with lesser gorges cradling Bear Lake, picturesque Dream Lake, beautiful Fern Lake, and exquisite Odessa Lake, and still others yet unnamed, lie in the angle north of Longs Peak; while in the angle south lies a little-known wilderness of lakes and gorges called Wild Basin.

At timber line, where the winter temperature and the fierce icy winds make it impossible for trees to grow tall, the spruce trees lie flat on the ground like vines; presently they give place to low willows, which in their turn give place to small piney growths, and finally to tough straggling grass, hardy mosses, and tiny alpine flowers. Grass grows in sheltered spots even on the highest peaks, fortunately for the majestic bighorn which ranges in these high, open places. Even at the highest altitudes gorgeously colored wild flowers grow profusely in sheltered gorges.

Above timber line the bare mountain masses rise from one to three thousand feet, often in sheer precipices. Covered with snow in autumn, winter, and spring, and plentifully spattered with snow all summer long, the vast, bare granite masses, from which, in fact, the Rocky Mountains got their name, are beautiful beyond description.

FAUNA AND FLORA

The national park is a sanctuary for wildlife. Animals and birds are protected from hunting. Living trees may not be cut or injured. Flowers may not be picked. The cooperation of visitors is requested, in order that the wildlife of the park may be protected, that the flowers may continue in their present abundance, and that the forests of the park may not suffer injury from fire or other cause.

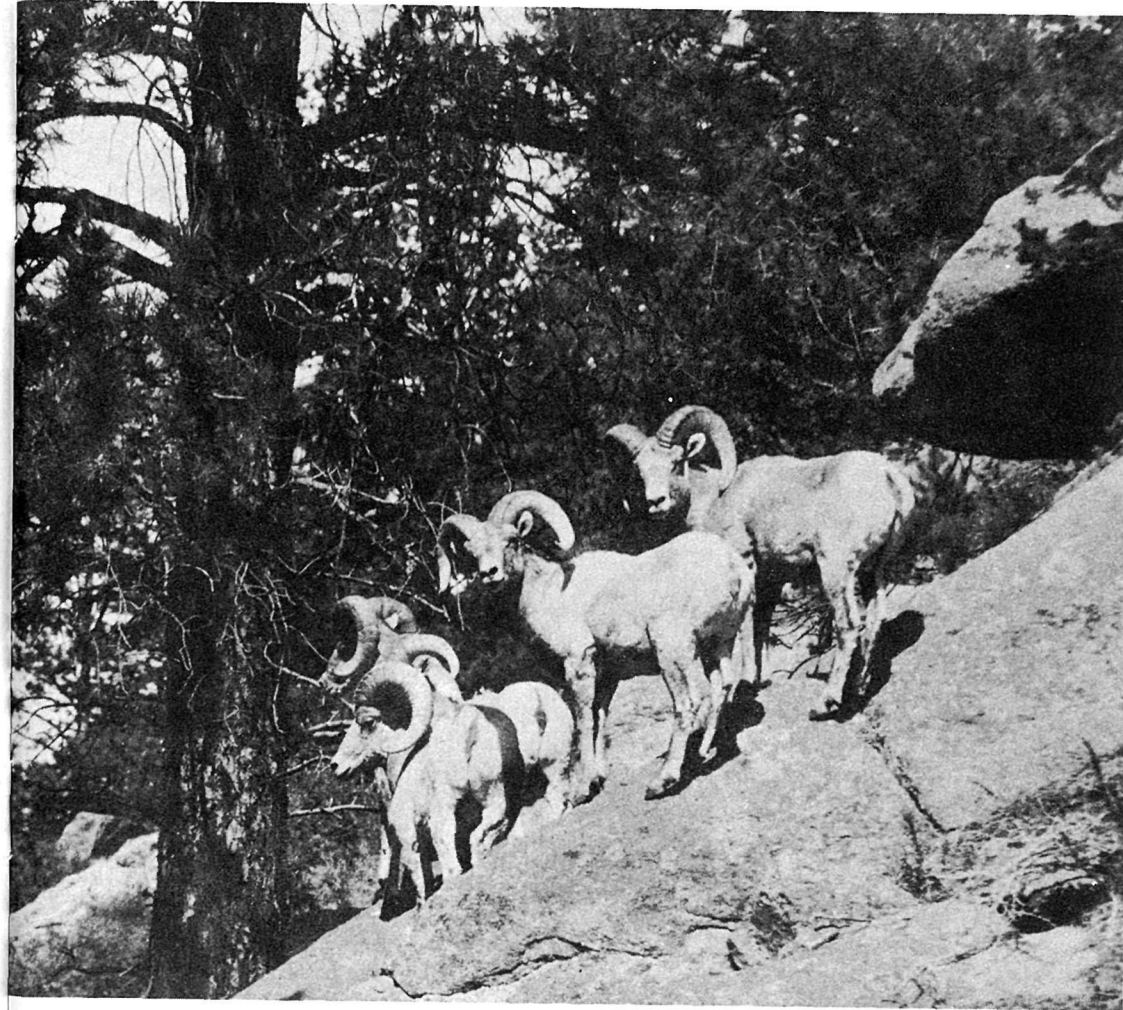
MAMMALS

The park is the natural home of the famous Rocky Mountain bighorn or mountain sheep. This animal is much larger than the domestic sheep, and is remarkably powerful and agile, surpassing the celebrated Swiss chamois in grace, size, and handsomeness. The bighorn is capable of

Rocky Mountain National Park . Colorado

descending seemingly impassable slopes, breaking the fall from ledge to ledge by landing lightly on all fours, plunging downward again until solid footing is reached. Bands are frequently seen at Sheep Lake, especially late in the season. Throughout the summer flocks may be glimpsed working about among the volcanic rocks of Specimen Mountain. After several years of decline these magnificent animals now appear to be holding their own.

The beaver, whose dams and other works are found along almost every drainage in the park, are easily seen in the early evening hours by the patient observer. Elk, numbering about 700, and deer, which are numerous and widely distributed, as well as other animals, are often observed



ROCKY MOUNTAIN BIGHORN

during the summer months; but the best time to see the bighorn, elk, and deer is during the autumn and winter months when these animals are on the winter ranges of the park. Coyotes and black bears are present in limited numbers, while mountain lions and bobcats are rare and infrequently seen because of their wary nature.

The more common small mammals are chipmunks and Say's ground squirrels which abound at every parking area; Wyoming ground squirrels, or picket pins; marmots, or woodchucks; the Fremont squirrel, or chickaree; and the cony, a noisy, busy rodent of the rocky slopes at high altitudes.

BIRDS

The commonest species in the lower altitudes of the park are the western robin and the beautiful mountain bluebird. The mountain chickadee and the grayheaded junco are abundant at middle elevations. Above timber line the pipit and the brown-capped leucosticte, or rosy finch, are plentiful. The hermit thrush and the Townsend solitaire, among the finest songbirds in the world, are both fairly common in suitable localities. Other songsters include the purple finch, ruby-crowned kinglet, western meadowlark, and the rock and canyon wrens. The graceful violet-green swallow is abundant, and the crested jay, magpie, and nutcracker are conspicuous for their handsome appearance and vigorous flight. Among the birds possessed of curious and unusual habits are the broadtailed hummingbird, water ouzel, camp robber, nuthatch, nighthawk, red-shafted flicker, and the ptarmigan. Birds of prey seen during the summer include the golden eagle, red-tailed hawk, sparrow hawk, duck hawk, and Cooper's hawk.

Although widely distributed through the park, birds are more numerous along streams and near open marshes and meadows than in the dense forests. About 100 species are found regularly in summer, and more than 150 have been recorded for the entire year.

FLOWERS

This park is especially notable for the presence of the blue columbine and many beautiful flowers of the gentian and primrose families; for the profusion of dwarf alpine plants on the meadows above timber line; and for the brilliance of certain species found in moist glades of the subalpine zone. Striking examples of the latter are the tall blue larkspur and monkshood of many vivid hues, and the curious little red elephant.

Conspicuous and characteristic flowers of the lower altitudes are the mariposa lily, iris, wallflower, gaillardia, and numerous species of cinquefoil, pentstemon, and evening primrose. Among the less common groups, several delicate species of orchid, pyrola, violet, and anemone will delight

the botanist. Over 700 distinct species of flowering plants have been collected within the park, and doubtless many more await discovery and identification by the careful student.

TREES

The principal trees are the Engelmann spruce and alpine fir, which form extensive primeval forests in the subalpine region; the lodgepole pine, the prevailing tree of middle elevations; and the ponderosa pine, a large, spreading tree with reddish-brown trunks, occurring in open stands in the lower elevations. Limber pine is frequent in high rocky places, assuming picturesque forms at timber line, and the Douglas fir, or false hemlock, is widely distributed at lower elevations. The Colorado blue spruce shows conspicuously along moist stream banks at the eastern edge of the park. Rocky Mountain red cedar is present along the eastern slopes. In addition to the coniferous trees, there are three species of poplar, the most colorful of which is the aspen.

AUTOMOBILE TRIPS

DENVER CIRCLE TRIP

The Trail Ridge Road, which crosses the Continental Divide in Rocky Mountain National Park, forms part of a grand circuit of Colorado's beauties that offers one of the most attractive and impressive of the scenic automobile trips of our continent.

The trip starts from Denver, crosses the Continental Divide at Milner Pass in Rocky Mountain National Park, reaches Grand Lake, crosses the Continental Divide again at Berthoud Pass, traverses the Denver Mountain Parks, and returns to Denver, having completed without any duplication 240 miles of comfortable travel through magnificent country, full of interest and variety. The trip can be made in 2 days or it can be prolonged to suit individual time and inclination. It combines in one trip half a dozen features, any one of which by itself would be worth the journey. The Rocky Mountain Motor Co. operates daily scheduled trips over this route during the summer season.

On leaving Denver the road leads out Federal Boulevard, crosses Westminster Heights, from which point there is an extensive view of the Great Plains to the east and a panorama of the Front Range of the Rocky Mountains to the west. The road then passes through a farming section, where irrigation has turned what was once an arid plain into a richly productive district. Next is the town of Lafayette, where coal mining is the principal industry, and then the road traverses a sugar-beet country. At Longmont and Loveland are large factories, where sugar is extracted from the beets

and refined for table use. At Loveland the road turns westward and soon plunges into the precipitous canyon of the Thompson River. Then comes the village of Estes Park at the edge of Rocky Mountain National Park and half surrounded by it.

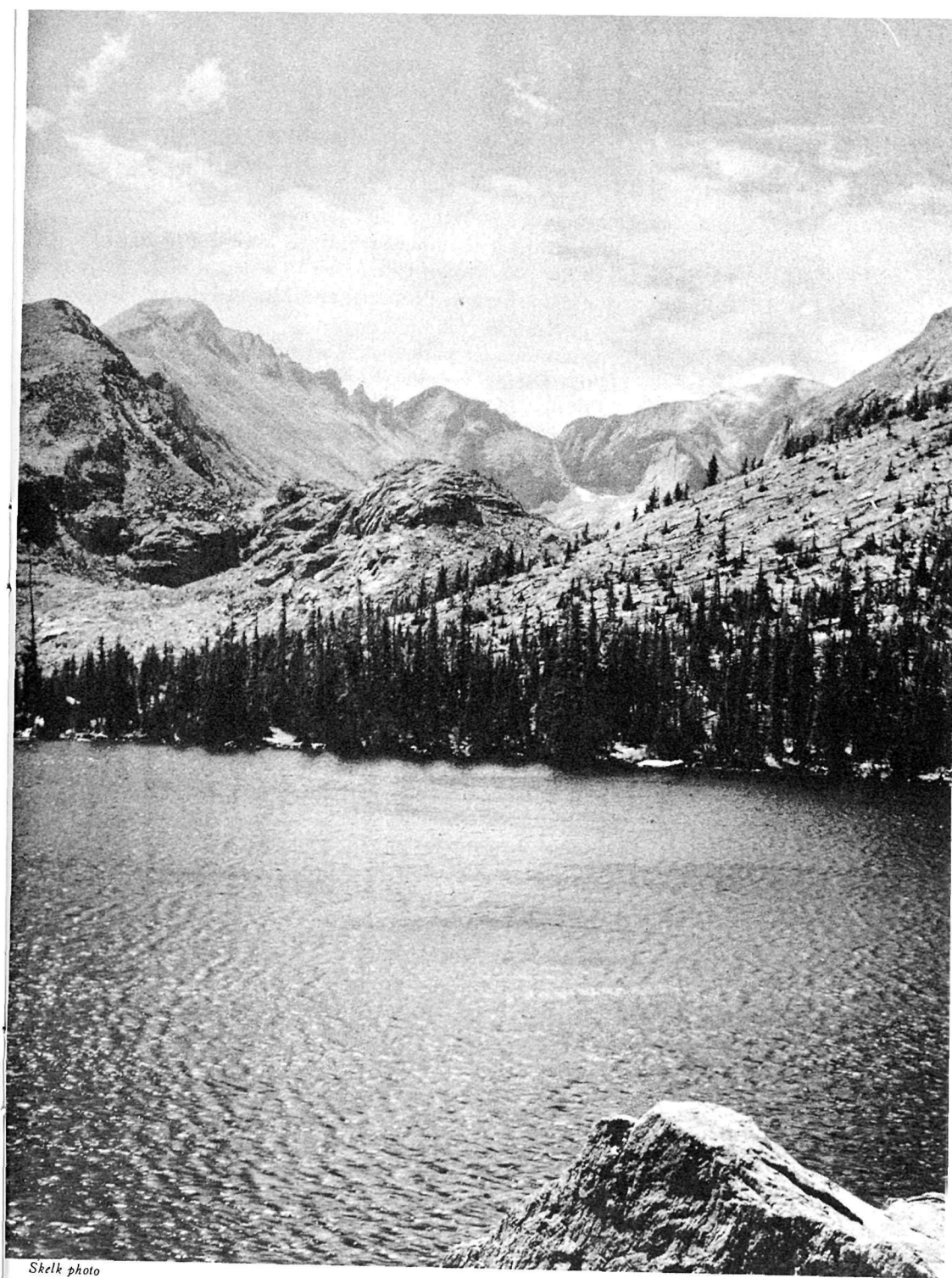
Continuing the journey, two routes lay open to the motorist. One follows up the valley of Fall River, 2 miles beyond the Fall River gateway, and then turns left over a portion of the Highdrive to the beginning of the Trail Ridge Road. The other road leads past the Government museum and information office to Moraine Park and Deer Ridge, with a magnificent view of Longs Peak and the Continental Divide.

The Trail Ridge Road is the highest continuous automobile road in America. Its 4-mile section, over 12,000 feet in altitude, is probably the longest stretch of road ever built at such a height. The trip to Grand Lake on this road is a never-to-be-forgotten experience. The road climbs to the very crest of the range and then follows the ridge.

To the south an unexcelled view of the most rugged portion of the Front Range is spread out, while to the north, across Fall River Valley, the view is dominated by the majestic Mummy Range, and the course of the old Fall River Road may be traced as it zigzags up the slope of Mount Chapin toward Fall River Pass. Over a 350-foot cliff one may look into fascinating Iceberg Lake, a rock-bound crystal pool on which float blocks of ice.

A short distance beyond Iceberg Lake the highest point on the road is reached, 12,183 feet above sea level; the road descending to Fall River Pass, elevation 11,797 feet, which divides the waters of Fall River from those of the Cache la Poudre. The view from this point is unsurpassed. Below lie streams, valleys, forested slopes, and the realms of civilization. All around are mountains and peaks, no longer towering above, but close at hand or seen across some mighty valley. One can easily trace the work done by the glaciers during the ice age on these mountain ranges; the broad U-shaped valleys and precipitous amphitheatres or cirques at the head of the streams are the typical glacial signs. To the south is Trail Ridge. To the west is Specimen Mountain, interesting because of the variety of color in its volcanic rocks, geodes lined with crystalline material, volcanic glass, and other curious formations. It is also the home of the bighorn.

Farther to the west lies the Never Summer Range, as the Indians picturesquely named it. Of its many peaks the most prominent are Baker, Nimbus, Red, Cumulus, Howard, Lead, and, highest of all in this range, Mount Richthofen, 12,953 feet in elevation. Strange as it may seem, Milner Pass lies below, and one descends in order to cross the Continental Divide. The road drops down into the forest zone, passes Poudre Lakes, and crosses Milner Pass at an elevation of 10,759 feet. It then leads to Grand Lake, a



Skelk photo

BEAR LAKE, WITH MASSIVE LONGS PEAK IN THE BACKGROUND

sapphire gem on the western edge of the national park and one of the largest and most beautifully situated lakes in the State. It is a mile and a half in length and nearly a mile in width. Its clear, cold water is of great depth. The lake lies at an elevation of 8,369 feet and claims the highest registered yacht anchorage in the world. The annual regatta is an event of much interest. At the head of the lake Mount Craig rises to a height of 12,005 feet, while Shadow Mountain, Bryant, Westcott, and Mount Enentah are nearby.

This is a point of concentration for park visitors where nearly everybody spends at least one night. Fishing, boating, horseback riding, and mountain climbing are some of the outdoor attractions.

Leaving the lake, the road follows down the Colorado River, passes the town of Granby, and commences the climb up a beautifully timbered valley to Berthoud Pass. Here, close to timber line, the watershed between the two oceans is again crossed. The road approaches near Georgetown, famed for its railroad loop, and then passes through Idaho Springs, with its hot springs and medicinal baths. Soon the valley of Clear Creek is left behind and the climb to Bergen Park is made where the Denver Mountain Parks are entered. In this region is Lookout Mountain, where Colonel Cody, "Buffalo Bill," is buried, overlooking the plains he knew so well.

From Wildcat Point there is a splendid view of foothills and plains, with Denver some 12 or 14 miles away.

BEAR LAKE ROAD

The Bear Lake Road passes the Glacier Basin public campground, 7 miles from Estes Park, and then follows up the valley of Glacier Creek, passing near Sprague's Lodge, and ends at Bear Lake, 12 miles from Estes Park Village. This is one of the best roads within the park boundaries. Bear Lake Lodge, on the eastern shore of the lake, offers good accommodations. The trail to Loch Vale starts from the Bear Lake Road, about 10 miles from Estes Park. From this trail or from Bear Lake the hiker can reach some beautiful and scenic country, including Glacier Gorge, Loch Vale, Dream Lake, and Tyndall Gorge. The trail to Fern Lake and the Flattop Trail to Grand Lake may be conveniently reached from Bear Lake.

LOOP TRIP

One may combine portions of several roads by taking what is known as the loop trip. Starting from Estes Park Village, the route follows the Fall River Road up to Chasm Falls and back to Horseshoe Park, then over Deer Ridge to Beaver and Moraine Parks, then a side trip up the Bear Lake

Road and back, returning to Estes Park Village by the Moraine Park Road. This loop trip takes one by many of the hotels and points of interest and offers scenic views. The circuit of the Highdrive is 17 miles. Including the trip to Bear Lake and other points, the distance is about 40 miles.

LONGS PEAK AND WILD BASIN TRIP

The main road to the Longs Peak district comes in just east of the village of Estes Park, skirting the east boundary of the park to the southeast corner. It passes between Longs Peak and the Twin Sisters, a detached area of the park on which a fire lookout is stationed, and several of the finest foot trips in the park are accessible from this road.

Continuing in a southerly direction, the road skirts the eastern boundary of the park and leads to Copeland Lodge on North St. Vrain Creek. From this point a secondary road leads into Wild Basin, a very attractive though less frequented portion of the park.

The road continues to Allens Park, thence to Ward, Nederland, and Boulder; another road leads down the South St. Vrain to Lyons.

TRAIL TRIPS

The trails offer by far the richest opportunities to see and explore Rocky Mountain National Park. Visitors desiring to look upon the many scenic wonders of the area should make it a point to travel at least a few of the trails into the glacial carved gorges and canyons and the myriad lakes therein. While most of the trails can be traveled horseback, there are a few trails in the more remote regions that are traversable only by hikers. Trips by trail into Loch Vale, Glacier Gorge, Wild Basin and to Fern, Odessa, Lawn, Dream, Haiyaha, and Chasm Lakes offer sights never to be forgotten. For the seasoned trail traveler, trips to Black Lake, Sky Pond, Flattop Mountain, and Halletts Peak are recommended. The more strenuous trips and climbs, such as the ascent of Longs Peak, McHenry Peak, or Rowe Glacier, or jaunts to remote areas are recommended only for those who are thoroughly experienced.

Travelers on trails are advised to secure the services of licensed guides for all except the shortest trips. Besides insuring security, the guide adds greatly to one's comfort and enjoyment. He knows the country and its features of interest, and also has a general knowledge of the trees and wild flowers. Information as to guides can be secured at the park information office.

There follows a list of suggested trips with information as to distances. Anyone desiring further information on these trips should write to the superintendent of the park or call at the ranger stations or information desks in the museums.

DISTANCES TO PRINCIPAL POINTS OF INTEREST

ONE-HALF-DAY TRIPS FROM ESTES PARK VILLAGE

[Elevation 7,547 feet. No guide needed except for No. 5]

Trips	Elevation	Miles from Estes Park	Days round trip	Remarks (one-way distances)	Description
	<i>Feet</i>				
1. Gem Lake	8,700	4	½	2 miles by auto, 2 horse or foot.	Distant view of Longs Peak from top.
2. Prospect Mountain.	8,896	2	½	2 miles on foot . . .	Fine view of range and Estes Park Valley.
3. Old Man Mountain.	8,300	1½	¼-½	¾ mile by auto; ¾ on foot.	View of village and park.
4. Deer Mountain.	10,028	4	½-1	4 miles by horse or on foot.	Top of ridge reached by auto and mountain climbed from there.
5. Wonder Basin .	8,600	5½	½-1	2 miles by auto; 3½ on foot.	Interesting examples of erosion.

ONE-DAY TRIPS FROM ESTES PARK VILLAGE

[Elevation 7,547 feet. Guide recommended for all trips]

Trips	Elevation	Miles from Estes Park	Days round trip	Remarks (one-way distances)	Description
	<i>Feet</i>				
1. Flattop Mountain.	12,300	15	1	11 miles by auto; 4½ by horse or on foot.	Excellent horseback or foot-trail trip to Continental Divide.
2. Bear Lake	9,485	11	½	11 miles by auto.	Glacial Lake. Fishing.
3. Mill Creek . . .	8,800	7	½	6 miles by auto; 1, horse or foot.	Former ranger station.
4. Fern Lake	9,550	11½	1	6 miles by auto; 5½, horse or foot.	Beautiful wooded trail; lake in wonderful setting.
5. Odessa Lake . .	10,000	12	1 or 2	6 miles by auto; 6½, horse or foot.	Lake of spectacular alpine beauty.
6. Bierstadt Lake	9,350	9½	½	8 miles by auto; 1½ by horse or on foot.	On huge moraine in heavy timber. View of range.
7. Loch Vale . . .	10,250	12	½	10 miles by auto; 2½ by horse or on foot.	Remarkable glacial evidences; lake of unusual alpine beauty.

ONE-DAY TRIPS FROM ESTES PARK VILLAGE—continued

Trips	Elevation	Miles from Estes Park	Days round trip	Remarks (one-way distances)	Description
	<i>Feet</i>				
8. Storm Pass . . .	10,350	11	1	9 miles by auto; 2, horse or foot to pass; 6¼ to Bear Lake Road.	Moraine; timber line growth.
9. Lily Lake (via Wind River).	8,975	8	1	6 miles by auto; 2, horse or foot.	Beautiful aspen and bluespruce trail.
10. Ypsilon Lake .	10,550	13	1	8 miles by auto; 5 by horse or on foot.	Wild trail to glacial lake under precipices of Mount Ypsilon.
11. Lawn Lake . . .	10,950	14¼	1	8 miles by auto; 6¼, horse or foot.	Interesting mountain trip. Fall fishing.
12. Crystal Lake .	11,450	16	1 or 2	8 miles by auto; 7½, horse or foot; ½, foot.	Timber line; glacial lake in glacial cirque.
13. Rowe Glacier .	13,200	17½	1 or 2	8 miles by auto; 7½, horse or foot 2, foot.	Largest glacier in park. Great mountain view.
14. Specimen Mountain.	12,482	34	1 or 2	31 miles by auto; 3, horse or foot.	Interesting volcanic formations. Bighorn.
15. Twin Sisters and Look-out.	11,436	12	1	8½ miles by auto; 3½, horse or foot.	Fire lookout. View of entire country.
16. Chasm Lake . .	11,850	15¼	1	10 miles by auto; 5 by horse or on foot; ¼ on foot.	Timber line; terrific glacial work; perpendicular precipices.
17. Hallett Peak . .	12,725	15½	1	11 miles by auto; 4½, horse or foot; ½, foot.	Short stiff climb. View of hundreds of square miles.
18. The Keyhole . .	13,214	16½	1	10 miles by auto; 6, horse or foot; ½, foot.	Spectacular views of Glacier Gorge and Longs Peak.

TRIPS FROM GRAND LAKE

Trips	Elevation	Miles one way	Days round trip	Remarks
	<i>Feet</i>			
1. Cascade Falls	9,000	4	½	4 miles by horse or on foot.
2. Flattop shelter cabin . . .	10,500	10	1	10 miles by horse or on foot.
3. Lake Nanita	10,750	10	1	Do.
Lake Nokoni	10,850	11	1	Do.
4. Bench Lake	10,923	12	1	10 miles by horse; 2 on foot.
5. Flattop Mountain	12,300	12	1	12 miles by horse or on foot.
6. Adams Falls	9,000	2	½	2 miles by horse or on foot.
7. Shadow Mountain	10,100	3	½	3 miles by horse or on foot.

TRIPS FROM GRAND LAKE—continued

Trips	Elevation	Miles one way	Days round trip	Description
	<i>Feet</i>			
8. Lake Verna	10, 150	8	1	8 miles by horse or on foot.
9. Hell Canyon Pass	11, 400	13	2	8 miles by horse; 5 on foot.
10. Colorado River trail	8, 500	5	½	5 miles by horse or on foot.
11. North Fork Road	9, 038	13	1	13 miles by horse, foot, or auto.
12. Phantom Valley Ranch	9, 000	13	1	Do.
13. Milner Pass	10, 759	18	1	18 miles by horse, on foot, or by auto.
14. Tonahutu Creek, Big Meadows	9, 385	5	½	5 miles by horse or on foot.
15. Columbine Lake	8, 600	3	½	3 miles by horse, on foot, or by auto.
16. Fall River Road to Continental Divide and Fall River Pass	11, 797	22	½	22 miles by horse, foot, or auto.
17. Estes Park	7, 547	47	1	47 miles by horse or auto.

OTHER TRIPS IN ROCKY MOUNTAIN NATIONAL PARK

[Guide recommended on all these trips]

Trips	Starting point
1. Chasm Lake—Longs Peak	Longs Peak Camp-ground.
2. Glacier Gorge—Lakes Mills, Black, Blue, and Shelf	Glacier Basin.
3. Lake of Glass—Sky Pond—Taylor Glacier	Do.
4. Loch Vale—Andrews Glacier—Otis Peak—Otis Gorge—Lake Haiyaha—Nymph Lake—Bear Lake	Do.
5. Flattop Mountain—Tyndall Glacier—Tyndall Gorge—Emerald Lake—Dream Lake—Nymph Lake	Bear Lake.
6. Fern Lake—Odessa Lake—Flattop Mountain—Tyndall Glacier—Hallett Peak—Continental Divide—Tourmaline Gorge	Fern Lake.
7. Spruce Lake—Spruce Canyon—Hourglass and Rainbow Lakes—Sprague Glacier—Continental Divide—Tourmaline Lake and Gorge—Odessa and Fern Lakes	Do.
8. The Pool—Forest Canyon	The Pool.
9. Wild Basin	Copeland Lake.
10. Top of road on Continental Divide—Mount Ida—Gorge Lakes—Forest Canyon—The Pool	Estes Park.
11. Fall River Road—Chapin Pass—Mounts Chiquita, Ypsilon, and Chapin—Bill Currence's trail	Do.
12. Fall River Pass—Cache la Poudre River—Down to mouth of Hague Creek—Up to Chapin Creek to Chapin Pass—Fall River Road	Do.
13. Horseshoe Park—Lawn Lake—"The Saddle"—Cascade Creek—Mouth of Hague Creek back as trip no. 12	Horseshoe Park.

OTHER TRIPS IN ROCKY MOUNTAIN NATIONAL PARK—continued

Trips	Starting point
14. Fall River Road to Chapin Pass—Chapin Creek and Cache la Poudre to mouth of Hague Creek—Boundary of park to la Poudre Pass—Headwaters of Colorado River—Phantom Valley Ranch	Estes Park.
15. Trail Ridge—Continental Divide—Phantom Valley Ranch	Do.
16. Phantom Valley Ranch—Headwaters of Colorado River—Thunder Pass and Thunder Mountain	Phantom Valley Ranch.
17. Mount Richthofen	Do.
18. Specimen Mountain	Do.
19. Eight or more good climbs in the Never Summer Range	Do.
20. Flattop Mountain—Tyndall Glacier—Andrews Glacier—Flattop shelter cabin—Lakes Nanita and Nokoni	Estes Park.
21. North Inlet to source—Mount Alice—Wild Basin	Flattop shelter cabin.
22. Grand Lake via Phantom Valley Ranch	Estes Park.
23. Grand Lake via Flattop	Do.

GRAND LAKE

The North and East Inlets are the two principal rivers entering Grand Lake. Each flows from cirques under the Continental Divide. Lakes Nokoni and Nanita, among the most romantic of the park, are reached from a trail connecting with both sides of the park by the Flattop Trail. Lake Verna and her unnamed sisters are the sources of the East Inlet and are reached by trail.

While not yet as celebrated as the showier and more populated east side, the west side of Rocky Mountain National Park has rugged charm. The Continental Divide, bent from the north and called the "Never Summer Mountains," rises from the western side of the Colorado River. On every side the mountains lift bald peaks, magnificent canyons penetrate the precipices of the Divide, and beautiful streams rush down the mountain slopes to the river.

WILD BASIN

The splendid Wild Basin area south of Longs Peak and east of the Continental Divide is dotted with lakes of superb beauty in a sublime mountain setting. It is entered from Copeland Lake by an unimproved road up the North Fork of St. Vrain Creek, which soon lapses into a trail at the Wild Basin campground. From mountain tops on the south may be had unsurpassed views of the snowy mountains. The largest lakes of Wild Basin—Thunder Lake and Bluebird Lake—are both above timber line but are easily accessible by trails.

WHAT TO DO

There are few places which offer as many diversions as Rocky Mountain National Park. The Estes Park Golf and Country Club has an excellent 18-hole golf course and a tennis court. Several hotels have croquet and tennis courts. There are motoring, horseback riding, fishing, and hiking. The motorist may skirt the loftiest of snow-splashed mountains for miles, or he may motor up the Trail Ridge Road and leave his car to start afoot on mountain-top tramps and picnics, or across the Continental Divide to Grand Lake. The horseback rider may find an infinite variety of valley roads, trails, and cross-country courses, and the hiker strike up the mountain trails into the rocky fastnesses.

FISHING

Fishing is permitted in all streams and lakes of the park except as closed by order of the superintendent. Information regarding closed areas may be obtained at any ranger station. All of the lower streams and lakes, and many of the lakes in the higher altitudes, are well stocked with trout. The State of Colorado stocks the park waters, and, therefore, a Colorado State license is required for males over 16 years of age. These may be purchased in the villages of Grand Lake and Estes Park. The bag limit is 15 fish in 1 day or in possession. Fishing tackle can be purchased or rented from several stores in the village of Estes Park.

A fish hatchery, operated by the State of Colorado, is located in the Fall River Road, 4 miles west of Estes Park Village. This hatchery supplies about 1,000,000 trout fry every year to the streams and lakes of this vicinity. The process of hatching and caring for the trout is explained to visitors, and the hatchery has proved to be of interest to many thousands each year.

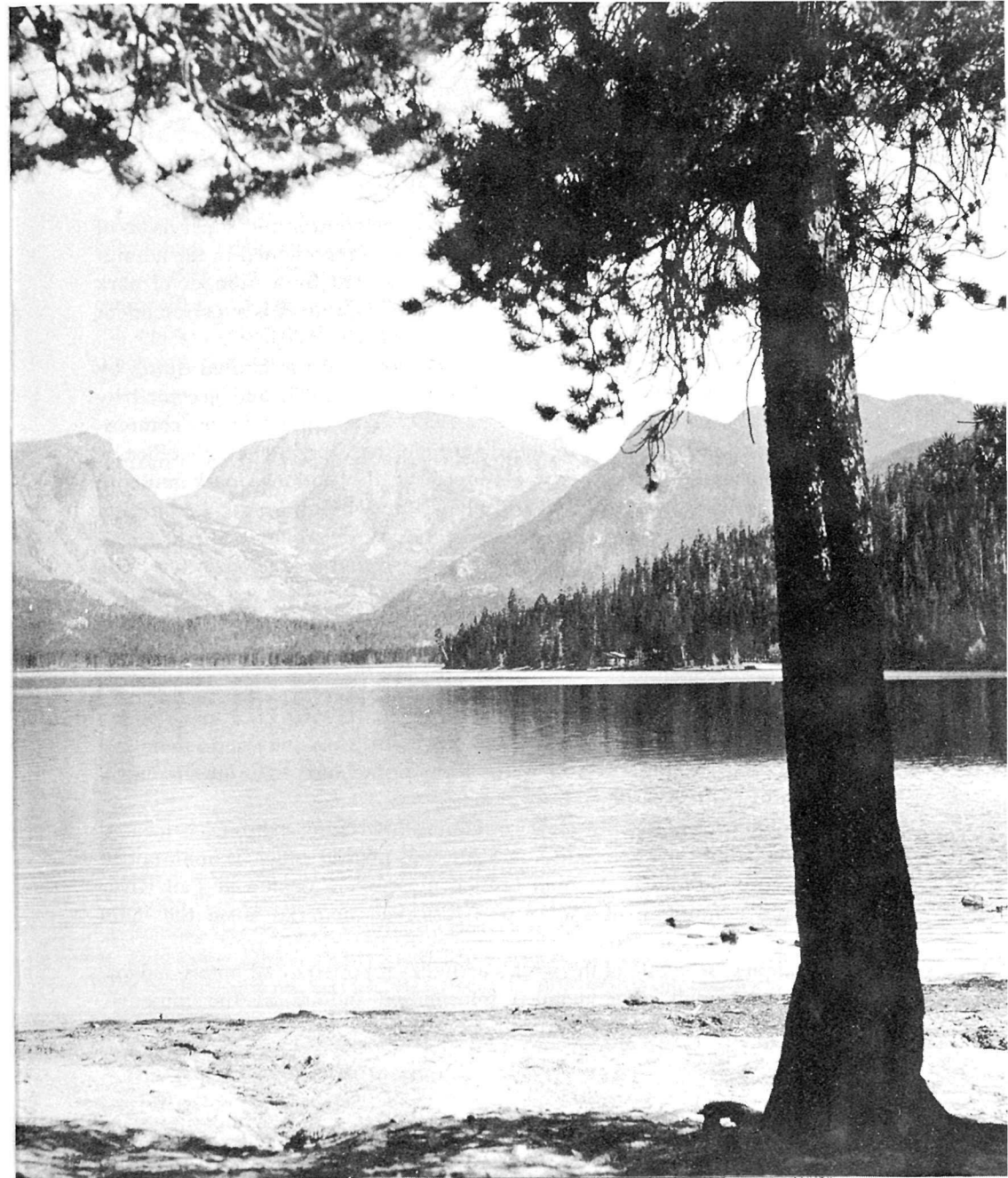
HORSEBACK RIDING AND CAMPING

At Estes Park Village and the smaller settlements nearby, and at Grand Lake, horses and complete camping outfits may be had at reasonable rates. General groceries and suitable equipment, including clothing and shoes, can be purchased from the general stores in Estes Park Village. Saddle horses may be rented at many of the hotels. There is much horseback riding throughout the entire district.

There are many competent guides in the vicinity who will arrange special trips, on foot or by saddle horse, and stopping at hotels or camping out, according to the preference of the party. A list of authorized guides can be secured at the park information office.

WINTER SPORTS

Rocky Mountain National Park offers unusual advantages for winter sports. Hotel accommodations are available throughout the year at the



Grase photo

village of Estes Park, which is readily accessible by automobile, and roads are kept open to the high country where the heavy snowfall affords excellent skiing on both open slopes and forest trails. Slopes suitable for tobogganing and ashcan lid slides are accessible from the eastern entrance. Skijoring may be enjoyed at Grand Lake and skating is available upon some of the small lakes and ponds.

ADMINISTRATION

Rocky Mountain National Park is under the control and supervision of the Director of the National Park Service, who is represented in the administration of the park by a superintendent, assisted by a number of park rangers who patrol the reservation. David H. Canfield is superintendent of the park, and his post office address is Estes Park, Colo.

Exclusive jurisdiction over the park was ceded to the United States by act of the Colorado Legislature of February 19, 1929, and accepted by Congress by act approved March 2, 1929. The United States commissioner for the park may be reached through the superintendent's office.

An information bureau is maintained at the national park museum building in Estes Park Village to supply visitors with information regarding accommodations, transportation schedules, foot trips, guides, etc.

The post office for the park and many hotels and resorts on the east side is Estes Park, Colo. There are post offices at Allens Park and Association Camp, but letters addressed to Estes Park will be forwarded. The west-side post office is at Grand Lake, Colo.

NATURALIST SERVICE

Illustrated lectures are given at various points throughout the park and vicinity each evening. Nature hikes, from a few hours to a day in length, are conducted regularly.

A museum of natural history, containing interesting exhibits, is located near the administration building. An information office is maintained in the same building. A small branch museum is located at Fall River Pass, and a museum of Indian and historical material is on the main highway in Moraine Park.

A complete schedule of the week's activities is posted at all hotels, lodges, and campgrounds. For detailed information inquire at the museum. There is no charge for any of the above-mentioned services.

FREE PUBLIC CAMPGROUNDS

The National Park Service maintains five free public campgrounds as follows:

Rocky Mountain National Park . Colorado

24

Glacier Basin Campground, on the Bear Lake Road, 7 miles from Estes Park.

Aspenglen Campground, on the Fall River Road, 5 miles from Estes Park.

Wild Basin Campground, 15 miles south of Estes Park on the North St. Vrain Creek at the park boundary.

Endovalley Campground, on the Fall River Road, 9 miles from Estes Park.

Longs Peak Campground, at the beginning of the east Longs Peak Trail near Longs Peak post office.

Motorists and others who bring trailers or camping equipment with them will find these campgrounds attractive places in which to enjoy life in the open. Both wood and water are readily available. One person or party may not camp in any campground more than 30 days in 1 season.

PARK SEASON

From June 15 to September 20 the hotels are open, daily transportation service through the park is available, and the park may be explored most conveniently. The roads to the village of Estes Park, by way of Lyons and the Thompson Canyon, remain open throughout the year, and the village has daily transportation and mail service. Some of the hotels in the village are open all year. The national park is never closed to visitors, and every season offers its particular attractions.

The Trail Ridge Road remains open to travel until the first heavy snowfall. This usually occurs in October, and the road is not passable again before June 15. Other lower roads have a longer season, and even in mid-winter one may usually go by automobile for 5 or 6 miles beyond Estes Park Village before finding the roads closed by snow.

HOW TO REACH THE PARK

Denver, the gateway to the western national parks, is reached by the Atchison, Topeka & Santa Fe; Chicago, Burlington & Quincy; Rock Island & Pacific; Colorado & Southern; Denver & Rio Grande Western; Denver & Salt Lake; Union Pacific; and Missouri Pacific railroads. For information regarding fares, service, etc., apply to railroad ticket agents.

Trancontinental bus service is also available to Denver. Complete information as to schedules, rates, etc., may be obtained from any bus agent.

The Rocky Mountain Motor Co. operates regular daily automobile service to the park from the following places: Denver, leaving at 8:45 a. m. and 2:30 p. m.; Greeley, 9:15 a. m.; Fort Collins, 7:45 a. m.; Loveland, 9:50 a. m.; Longmont, 9:45 a. m.; Boulder, 9:35 a. m. Corresponding

25

Rocky Mountain National Park . Colorado

return service from Estes Park Village is available, return trips for Denver starting from Estes Park Village at 8:15 a. m. and 1:45 p. m.

From June 15 to September 20 automobile connection is made at Granby, Colo., for a tour of the park by way of Grand Lake and Estes Park Village to Denver, leaving Granby at 12 noon daily. Auto service is available also, leaving Grand Lake at 5:35 p. m. and arriving at Granby at 6:05 p. m.

The United Airlines, operating 18-hour transcontinental service, provides service for Rocky Mountain National Park from Denver and Cheyenne. The Rocky Mountain Motor Co. buses connect with the airline at Denver. Air service is also provided between Cheyenne and the Colorado metropolis by the Wyoming Air Service. From the south, T. W. A., Inc., and American Lines, in their transcontinental services through Albuquerque and El Paso, respectively, connect with Denver by the Varney Speed Lines.

ALL-EXPENSE CIRCLE TRIPS

Five special all-expense tours from Denver to the park and return to Denver are offered by the Rocky Mountain Motor Co. from June 15 to September 20. Denver is about 85 miles from the park, and for \$16 (transportation cost only) one can make a 2-day trip, entering the park through picturesque Big Thompson Canyon, crossing the Front Range of the Rocky Mountains twice, and stopping at Grand Lake, Estes Park, Clear Creek Canyon, Idaho Springs, and Lookout Mountain. This tour affords fine panoramas of the Rocky Mountains from elevations above 12,000 feet. Another 2-day tour follows the same route but includes lunch at Estes Park Village, dinner, night's lodging, and breakfast at Grand Lake Lodge, and lunch the second day at Idaho Springs. The cost is \$23.50.

The 3-day tour is leisurely enough to permit the traveler to spend a night at Estes Park Chalets and 1 at Grand Lake Lodge. The cost is \$29.50, including meals and lodging. The 4-day trip includes 2 nights at Estes Park Chalets and 1 at Grand Lake Lodge; the cost is \$35.50. On the 6-day trip which costs \$49.50, 3 days are spent at Estes Park Chalets and 2 at Grand Lake Lodge. These tours are leisurely and permit ample time for fishing, horseback riding, or hiking.

Tours similar to the above, but connecting with the Denver & Rio Grande Western Railroad at Granby, are available at the same rates. Special all-expense tours from Granby, through the park, to Estes Park Village and Denver are available also at similar rates.

TRANSPORTATION IN THE PARK

The traveler who has no car available or does not wish to drive his own machine in the mountains may take advantage of the special trips offered from June 15 to September 20 by the Rocky Mountain Motor Co. at

Estes Park Village. The Trail Ridge trip to Fall River Pass and return, approximately 50 miles, requires about 4 hours and costs \$2.50 per person when 5 people or more make the trip. When fewer than 5 persons make this trip, a \$5 charge per person is made. One can go in the morning, leaving at 8:30 o'clock, or in the afternoon at 2. The Estes Park-Grand Lake trip of about 47 miles costs \$5 one way and \$8 for a round trip. One can leave Estes Park Village at 8:45 a. m. or 2:30 p. m. Two other daily loop trips are made from the village for \$4 a person. Stops are made at the Fish Hatchery, Horseshoe Park, Fall River Lodge, Fern Lake Trail, Brinwood Hotel, Stead's Hotel, Glacier Basin, Bear Lake, Sprague's Lodge, and the Y. M. C. A. Cars leave Estes Park at 8:30 a. m. and 2 p. m. Proportionate charges are made for anyone not desiring to make the entire trip. Between September 20 and June 15 these rates apply only when four or more passengers make the trip.

Touring-car service is also available at 30 cents a mile for two passengers, 40 cents for three, 50 cents for four, and 10 cents a mile for each additional passenger. Waiting time costs \$2.50 an hour.

Passenger and freight service within the park is operated by the Rocky Mountain Motor Co. under a franchise from the Secretary of the Interior, with rates approved by him.

ACCOMMODATIONS AND EXPENSES

The seven hotel and lodge operations in Rocky Mountain National Park are conducted with private capital under franchise from the Secretary of the Interior at rates subject to his approval.

This booklet is issued once a year and *the rates mentioned herein may have changed slightly since issuance*, but the latest rates approved by the Secretary are on file with the superintendent.

HOTELS AND LODGES ON PARK LANDS

Bear Lake Lodge, located on Bear Lake, offers cabin accommodations, ranging in price from \$2.50 to \$3.50 a day and \$15 to \$20 a week. Meals: Breakfast, a la carte; luncheon, 75 cents to \$1; dinner, \$1 to \$1.50. Rates, American plan, range from \$4.25 to \$6 a day and \$26.50 to \$38.50 a week.

Fern Lodge, on Fern Lake, offers cabin accommodations, without bath, American plan only, at the same rates charged at Bear Lake Lodge.

Forest Inn, located at "The Pool" on Fern Lake Trail, offers board and lodging (tents) at prices from \$3 to \$4 a day and \$17.50 to \$20 a week. For cabin accommodations the charge is from \$4 to \$5 a day, and \$20 to \$25 a week. Single meals are 75 cents and \$1 each.

Grand Lake Lodge, near Grand Lake, open from June 15 to September 20, operates on the American plan and rates are from \$6 to \$8 a day. Single meals: Breakfast, \$1; luncheon, \$1.50; dinner, \$1.50.

Brinwood Hotel, at the head of Moraine Park, offers American-plan service at from \$3.65 to \$6.50 a day and \$22.50 to \$42 a week. Saddle horses may be rented at \$2.50 a half day, \$4 a day, \$21 a week, and \$75 a month.

Camp Woods, at the junction of Bear Lake and Moraine Park roads, offers housekeeping cottages at from \$2.50 a day for two persons to \$6 a day for six persons. By the week: From \$14 for two persons to \$35 for six. By the month: From \$45 for two persons to \$60 for five persons.

Sprague's Lodge, in the Glacier Basin, provides American-plan accommodations at the following rates: By the day, \$4 to \$7; by the week, from \$24.50 to \$45; 4 weeks, \$84 to \$145.

PRIVATE HOTELS, COTTAGES, AND CAMPS

There are many hotels, lodges, and camps located on private lands in or adjacent to the park. The National Park Service exercises no control over the rates and operations of these hotels. Furnished cottages may be rented in Estes Park Village, Grand Lake Village, and elsewhere on private lands in or adjacent to the national park. Information concerning hotels and cottages not under the control of the National Park Service may be obtained by writing the Secretary of the Chamber of Commerce, Estes Park, Colo., or the president of the Grand Lake Commercial Club, Grand Lake, Colo.

REFERENCES

- ALBRIGHT, HORACE M., and TAYLOR, FRANK J. Oh, Ranger! A book about the national parks. Illustrated.
- BIRD, ISABELLA L. [BISHOP, MRS. ISABELLA L.] A Lady's Life in the Rocky Mountains. 1890. 296 pp., illustrated. G. P. Putnam's Sons, New York.
- BOYER, WARREN E. Vanishing Trails of Romance. 1923. 94 pp., illustrated.
- CHAPIN, FREDERICK H. Mountaineering in Colorado. 1890. 168 pp., illustrated. W. B. Clark, Boston, Mass.
- FARIS, JOHN T.:
Roaming the Rockies. 1930. Farrar & Rinehart. 333 pp., illustrated. Rocky Mountain National Park on pp. 228-246.
Roaming American Playgrounds. 1934. 331 pp., illustrated. Farrar & Rinehart. Rocky Mountain National Park on pp. 129-131.
- FROTHINGHAM, ROBERT. Trails Through the Golden West. Robert M. McBride, New York.
- HART, JOHN L. JEROME. Fourteen Thousand Feet. 2d ed., 1931. Colorado Mountain Club, Denver. 71 pp.
- HEWES, CHARLES EDWIN. Songs of the Rockies. 1914. 129 pp., illustrated. Edgerton.
- JACKSON, WILLIAM H., and DRIGGS, H. R. The Pioneer Photographer. 1929. Rocky Mountain National Park on pp. 143-152.
- JEFFERS, LE ROY. The Call of the Mountains. 282 pp., illustrated. Dodd, Mead & Co., New York. Rocky Mountain National Park on pp. 87-95; 262.
- KANE, J. F. Picturesque America. 1935. Published by Frederick Gumbrecht, Brooklyn, N. Y. 256 pp., illustrated.
- KLEINSCHNITZ, FRED C. Field Manual of Birds, Rocky Mountain National Park. 1937. 60 pp.
- LONGYEAR, BURTON O.:
Trees and Shrubs of the Rocky Mountain Region. 1927. 244 pp., illustrated. G. P. Putnam's Sons, New York.
Evergreens of Colorado. 1925. 82 pp., illustrated. Multigraph Service Bureau, Fort Collins, Colo.
- MILLS, ENOS A.:
Wild Life on the Rockies. 1909. 263 pp., illustrated. Houghton, Boston.
The Spell of the Rockies. 1911. 348 pp., illustrated. Houghton, Boston.
In Beaver World. 1913. 223 pp., illustrated. Houghton, Boston.
The Story of a Thousand Year Pine. 1914. 38 pp., illustrated. Houghton, Boston.
Rocky Mountain Wonderland. 1915. 362 pp. illustrated, map. Houghton, Boston.
The Story of Scotch. 1916. 63 pp., illustrated. Houghton, Boston.
Your National Parks. 1917. 532 pp., illustrated. Houghton, Boston.
The Grizzly, Our Greatest Wild Animal. 1919. 284 pp., illustrated. Houghton, Boston.
Adventures of a Nature Guide. 1920. 271 pp., illustrated. Houghton, Boston.
Waiting in the Wilderness. 1921. 241 pp., illustrated. Houghton, Boston.
Watched by Wild Animals. 1922. 243 pp., illustrated. Houghton, Boston.
Wild Animal Homesteads, 1923. 259 pp., illustrated. Houghton, Boston.
The Rocky Mountain National Park. 1924. 239 pp., illustrated. Houghton, Boston.
Romance of Geology. 1926. 245 pp., illustrated. Houghton, Boston.
Bird Memories of the Rockies. 1931. 263 pp., illustrated. Houghton, Boston.
- MILLS, JOE. A Mountain Boyhood. 1926. 286 pp. Sears.
- QUINN, VERNON. Beautiful America. 1923. 333 pp., illustrated. Frederick A. Stokes Co., New York City. Rocky Mountain National Park on pp. 260-262.
- RENSCH, H. E. Historical Background for the Rocky Mountain National Park. 1935. 42 pp. Rocky Mountain Nature Association.
- ROLFE, MARY A. Our National Parks. Book One. 1927. 320 pp., illustrated. Benj. H. Sanborn Co., Chicago.
- YARD, ROBERT STERLING:
The Top of the Continent. 1917. 244 pp., illustrated. Scribners. Rocky Mountain National Park on pp. 16-43.
The Book of the National Parks. 1926. 444 pp., 74 illustrations, 14 maps and diagrams. Scribners. Rocky Mountain National Park on pp. 93-117.
- WILBUR, RAY LYMAN, and DU PUY, WILLIAM ATHERTON. Conservation in the Department of the Interior. 1931. Chapter on national parks, pp. 96-112. Illustrated. Government Printing Office, Washington, D. C.
- YEAGER, DORR G.:
Bob Flame, Rocky Mountain Ranger. 1935. Illustrated. Dodd, Mead & Co. New York.
Scarface, the Story of a Grizzly. 1935. Illustrated. Penn, Phila.
- YELM, BETTY, and BEALS, RALPH L. Indians of the Park Region. 1934. 52 pp. Rocky Mountain Nature Association.

GOVERNMENT PUBLICATIONS

Glimpses of Our National Parks. An illustrated booklet containing descriptions of the national parks. Address the Director, National Park Service, United States Department of the Interior, Washington, D. C. Free.

Recreational Map. Shows both Federal and State reservations with recreational opportunities throughout the United States. Brief descriptions of principal ones. Address as above. Free.

Automobile Road Map of Rocky Mountain National Park. Shows road and trail system, hotels, camps, garages, superintendent's office, and approaches to the park. Distributed free in the park only.

National Parks Portfolio. By Robert Sterling Yard. Cloth bound and illustrated with more than 300 beautiful photographs of the national parks. Superintendent of Documents, Washington, D. C. Price, \$1.50.

Plants of Rocky Mountain National Park. By Ruth E. Ashton. 157 pages. 100 illustrations. A guide to the flowers of the park with keys for their identification. Superintendent of Documents, Washington, D. C. Price, 25 cents.

The Geologic Story of Rocky Mountain National Park. By Willis T. Lee. 89 pages. 101 illustrations. Superintendent of Documents, Washington, D. C. Price, 50 cents.

Fauna of the National Parks. Series No. 1. By G. M. Wright, J. S. Dixon, and B. H. Thompson. Survey of wildlife conditions in the national parks. Illustrated. Superintendent of Documents, Washington, D. C. Price, 20 cents.

Fauna of the National Parks. Series No. 2. By G. M. Wright and B. H. Thompson. Wildlife management in the national parks. Superintendent of Documents, Washington, D. C. Price, 20 cents.

Fauna of the National Parks. Series No. 3. By J. S. Dixon. Birds and Mammals of Mount McKinley National Park, Alaska. 236 pages, illustrated. Superintendent of Documents, Washington, D. C. Price, 35 cents.

Booklets about the national parks listed below may be obtained free of charge by writing to the Director, National Park Service, United States Department of the Interior, Washington, D. C.:

Acadia, Maine.	Lassen Volcanic, Calif.
Carlsbad Caverns, N. Mex.	Mesa Verde, Colo.
Crater Lake, Oreg.	Mount McKinley, Alaska.
General Grant, Calif.	Mount Rainier, Wash.
Glacier, Mont.	Sequoia, Calif.
Grand Canyon, Ariz.	Wind Cave, S. Dak.
Grand Teton, Wyo.	Yellowstone, Wyo.-Idaho-Mont.
Hawaii, Hawaii.	Yosemite, Calif.
Hot Springs, Ark.	Zion and Bryce Canyon, Utah.

Rocky Mountain National Park. Colorado

NATIONAL PARKS IN BRIEF

ABRAHAM LINCOLN, KY.—Birthplace of Abraham Lincoln. Established 1916; 0.17 square miles.

ACADIA, MAINE.—Combination of mountain and seacoast scenery. Established 1919; 26.01 square miles.

BRYCE CANYON, UTAH.—Canyons filled with exquisitely colored pinnacles. Established 1928; 56.23 square miles.

CARLSBAD CAVERNS, N. MEX.—Beautifully decorated limestone caverns. Established 1930; 15.75 square miles.

CRATER LAKE, OREG.—Beautiful lake in crater of extinct volcano. Established 1902; 250.52 square miles.

FORT McHENRY, MD.—Its defense in 1814 inspired writing of Star Spangled Banner. Established 1925; 0.07 square miles.

GENERAL GRANT, CALIF.—General Grant Tree and grove of Big Trees. Established 1890; 3.98 square miles.

GLACIER, MONT.—Unsurpassed alpine scenery; 200 lakes; 60 glaciers. Established 1910; 1,537.98 square miles.

GRAND CANYON, ARIZ.—World's greatest example of erosion. Established 1919; 1,008 square miles.

GRAND TETON, WYO.—Most spectacular portion of Teton Mountains. Established 1929; 150 square miles.

GREAT SMOKY MOUNTAINS, N. C.-TENN.—Massive mountain uplift; magnificent forests. Established for protection 1930; 683.75 square miles.

HAWAII: ISLANDS OF HAWAII AND MAUI.—Interesting volcanic areas. Established 1916; 248.54 square miles.

HOT SPRINGS, ARK.—Forty-seven hot springs reserved by the Federal Government in 1832 to prevent exploitation of waters. Made national park in 1921; 1.54 square miles.

LASSEN VOLCANIC, CALIF.—Only recently active volcano in United States proper. Established 1916; 163.48 square miles.

MAMMOTH CAVE, KY.—Interesting caverns, including spectacular onyx cave formation. Established for protection 1936; 60.20 square miles.

MESA VERDE, COLO.—Most notable cliff dwellings in United States. Established 1906; 80.21 square miles.

MOUNT MCKINLEY, ALASKA.—Highest mountain in North America. Established 1917; 3,030.46 square miles.

MOUNT RAINIER, WASH.—Largest accessible single-peak glacier system. Established 1899; 377.78 square miles.

OLYMPIC, WASH.—Forests of unusual density; rare Roosevelt elk. Established 1938; 1,012.5 square miles.

PLATT, OKLA.—Mineral springs. Established 1906; 1.32 square miles.

ROCKY MOUNTAIN, COLO.—Peaks from 11,000 to 14,255 feet in heart of Rockies. Established 1915; 405.33 square miles.

SEQUOIA, CALIF.—Outstanding groves of Sequoia gigantea. Established 1890; 604 square miles.

SHENANDOAH, VA.—Outstanding scenic area in Blue Ridge. Established 1935; 282.14 square miles.

WIND CAVE, S. DAK.—Beautiful cavern of peculiar formations. Established 1903; 19.75 square miles.

YELLOWSTONE: WYO.-MONT.-IDAHO.—World's greatest geyser area, and an outstanding game preserve. Established 1872; 3,471.51 square miles.

YOSEMITE, CALIF.—Valley of world-famous beauty; spectacular waterfalls; magnificent High Sierra country. Established 1890; 1,176.41 square miles.

ZION, UTAH.—Zion Canyon, 1,500 to 2,500 feet deep. Spectacular coloring. Established 1919; 138.04 square miles.

UNITED STATES GOVERNMENT PRINTING OFFICE - WASHINGTON - 1939

RULES AND REGULATIONS

[Briefed]

THE PARK REGULATIONS are designed for the protection of your property. You, as prudent owners, will help protect the natural beauties and scenery by warning the careless and reporting infractions of the regulations. The following synopsis is for the general guidance of visitors. Full regulations may be seen at the office of the superintendent and ranger stations.

Fires.—Fires may be lighted only when necessary and in designated places. Before leaving, KNOW your fire is out. HELP PROTECT this wonderland so all may enjoy it. Persons desiring to light fires outside of the designated campgrounds must secure a permit from the nearest ranger station.

Camps.—Automobile campers must stop in the designated campgrounds. All must be kept clean and sanitary. Burn your garbage in your camp fire. Empty cans and residue must be placed in garbage cans. One person or party may not camp in any campground more than 30 days in 1 season.

Public property, trees, flowers, and animals.—The destruction, injury, or disturbance of public property, trees, flowers, rocks, birds, animals, or other life is prohibited.

Fishing.—Fishing is permitted in all lakes and streams except as closed by order of the superintendent. All fish hooked less than 7 inches long shall be carefully handled with moist hands and returned at once to the water. Fifteen fish (not exceeding a total of 10 pounds) shall constitute the limit for a day's catch or in possession.

Automobiles.—Obey park traffic rules. Drive carefully at all times. The SPEED LIMIT is 20 miles per hour on grades and curves, and on straight stretches of road 35 miles per hour. All roads are patrolled. Automobiles will be stopped for checking at park entrances. Cars carrying passengers for profit are subject to restrictions.

Dogs and cats.—Must be kept securely on a leash while in the park. If you have no leash, keep the animal in your car.

Park rangers.—Are for your protection and guidance. Do not hesitate to consult them. Accidents, complaints, and suggestions should be reported to the superintendent's office immediately.