



# St. Croix River Map & Checklist

## Map 4: Highway 8 to Marine on St. Croix

*This river map provides information for the 18.3 mile section of the St. Croix River between Highway 8 and Marine on St. Croix Landing. This checklist will help you to have a safe and enjoyable trip!*

**Personal Floatation Devices (PFDs) are required** onboard for each passenger on all vessels. **Children under the age of 13 must wear a properly fitting PFD** while in moving vessels.

**Avoid overhanging trees** in the water. They can overturn a vessel and trap paddlers underwater.

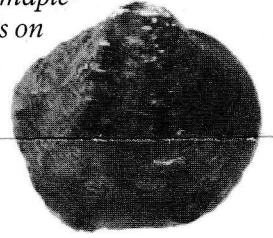
**Carry out all trash.**

**Open fires** are permitted only in steel fire rings or grills. Dead and down wood may be collected for firewood except from islands. Fires must be out and ashes cold before you leave the area.

**Camping zones** have been designated for this stretch. See reverse side for zone locations. There is a seven night limit. Most campsites accommodate 3 tents. Group sites accommodate up to 6 tents.

**Primitive toilets** are available at some campsites and landings. At areas without toilets, bury human waste 6 inches deep and at least 100 feet away from river and campsites.

*The winged maple-leaf mussel is on the federal endangered species list.*



**It is illegal to collect or disturb freshwater mussels or their shells.**

**Jet ski** use is prohibited on this stretch of river.

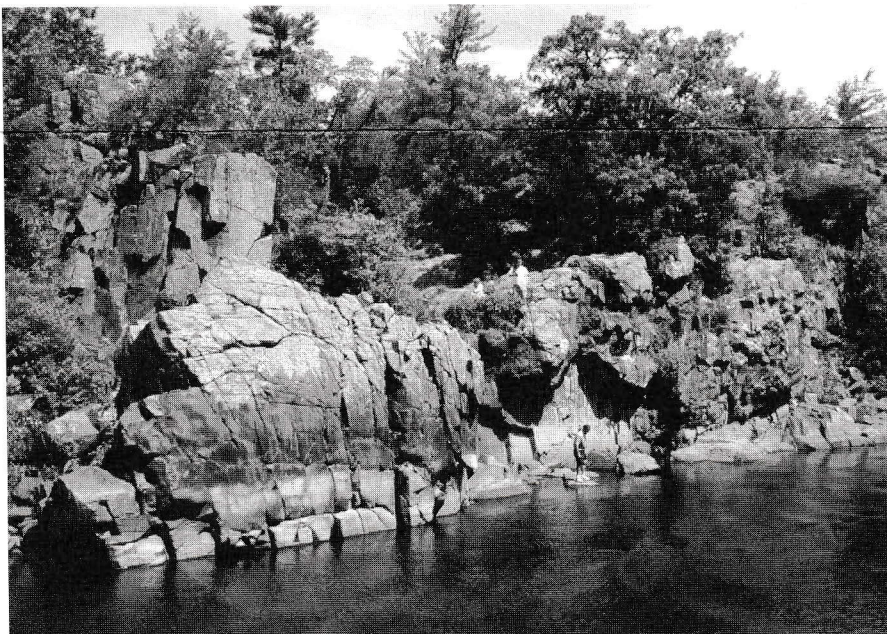
**Deer ticks** found along the river can carry Lyme disease. West Nile virus has been detected in birds of the area.

**Swimming** is prohibited from Highway 8 to the boat launch at Wisconsin Interstate Park. Entering the river from shore along Minnesota Interstate State Park is also prohibited.

**Glass beverage containers** are prohibited on lands and waters within the Riverway.

**Drinking water** is provided at some landings. See reverse for locations. River water must be treated to protect against giardia.

The **St. Croix River Visitor Center** is scheduled to open in June 2006.



**Water levels change. It is dangerous and illegal to jump from cliffs, bridges or trees into the St. Croix River.**


# Map 4: Highway 8 to Marine on St. Croix

- Boat launch
- Canoe access
- Drinking water
- Restrooms
- Visitor information
- Primitive shoreline campsite
- Primitive shoreline group campsite
- Developed campground
- Picnic area
- Hiking trailhead
- No Camping Zone except in State Park Campgrounds
- Rapids
- S43.1 Campsite River Mile
- Ranger station

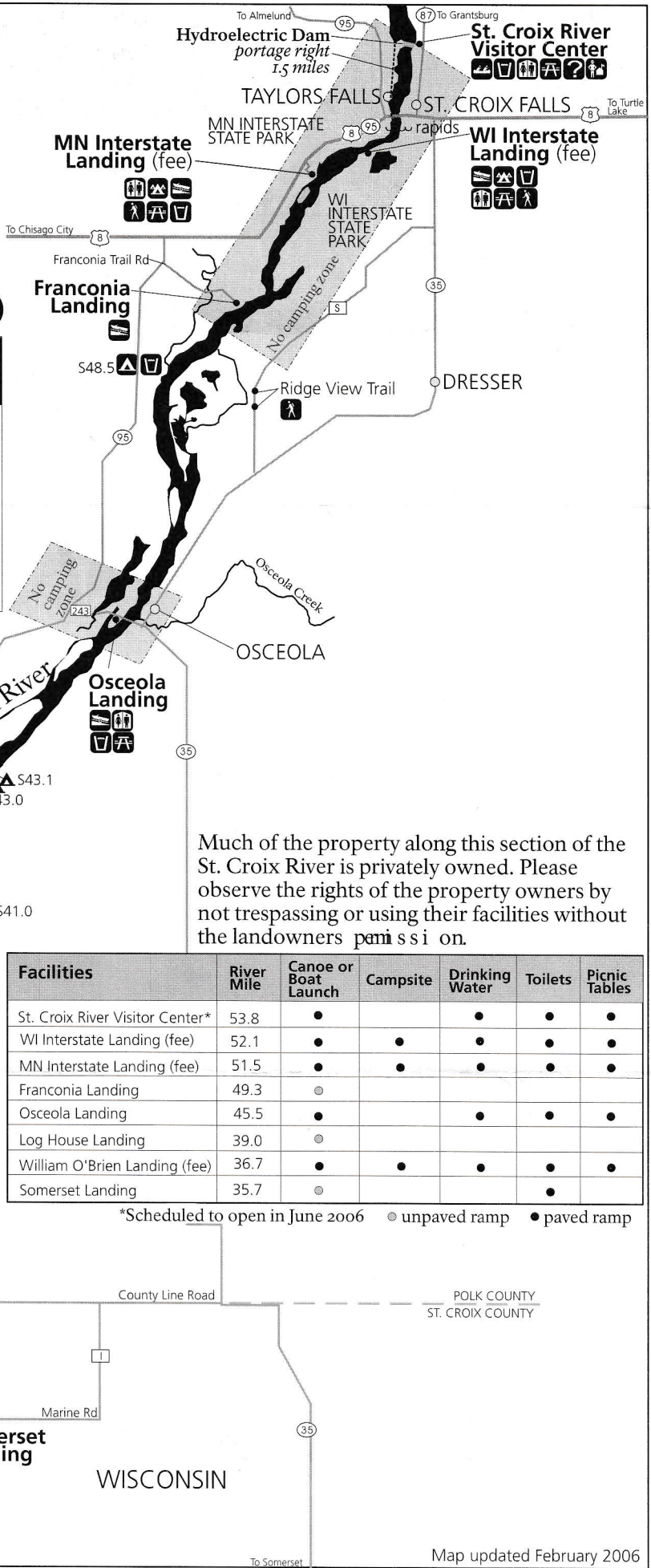
**St. Croix National Scenic Riverway**

Contact the National Park Service  
**St. Croix River Visitor Center**  
 St. Croix Falls, Wisconsin  
 715 483-3284

Website: [www.nps.gov/sacr](http://www.nps.gov/sacr)  
**In emergencies--dial 911**



**Boating Speed Regulations**  
 The area between the hydroelectric dam in Taylors Falls/St. Croix Falls, and south to the Apple River is designated a slow speed zone. Motorboats may only create a minimal wake.



Much of the property along this section of the St. Croix River is privately owned. Please observe the rights of the property owners by not trespassing or using their facilities without the landowners permission.

Facilities	River Mile	Canoe or Boat Launch	Campsite	Drinking Water	Toilets	Picnic Tables
St. Croix River Visitor Center*	53.8	●		●	●	●
WI Interstate Landing (fee)	52.1	●	●	●	●	●
MN Interstate Landing (fee)	51.5	●	●	●	●	●
Franconia Landing	49.3	○				
Osceola Landing	45.5	●		●	●	●
Log House Landing	39.0	○				
William O'Brien Landing (fee)	36.7	●	●	●	●	●
Somerset Landing	35.7	○			●	

\*Scheduled to open in June 2006    ○ unpaved ramp    ● paved ramp

A closure for boat traffic traveling upstream exists at the High Bridge, (approximately 4 miles downriver from Somerset Landing) to prevent the spread of zebra mussels.