

THERE ARE TWO KINDS OF RIVERWAY VISITORS ... WHICH ONE ARE YOU?

FIRST ... there is the person who knows enough and cares enough to have little effect on the river or on other people.

THIS PERSON ...



sets up camp only at designated sites or at those large enough to accommodate the group.

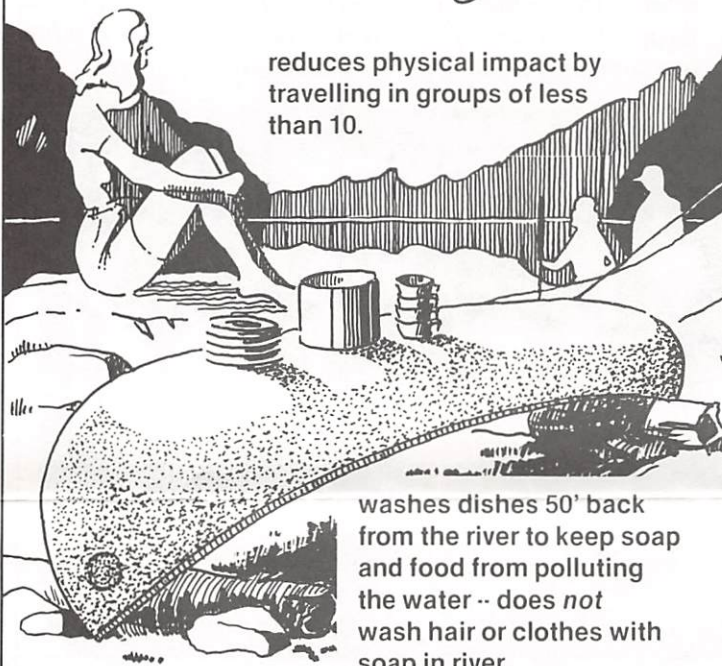
uses restroom facilities where available -- carries and uses a hand trowel to bury human waste in back country sites, burying waste in 6"-8" of soil to help protect water quality and other peoples' health.



hangs the food pack so animals cannot reach it.



reduces physical impact by travelling in groups of less than 10.

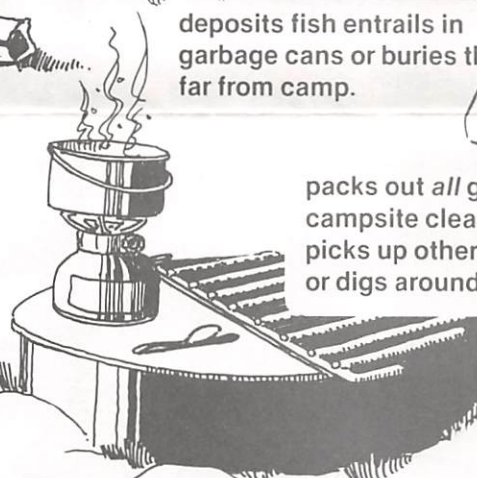


deposits fish entrails in garbage cans or buries them far from camp.

washes dishes 50' back from the river to keep soap and food from polluting the water -- does *not* wash hair or clothes with soap in river.

packs out *all* garbage -- leaves campsite cleaner than he found it -- picks up others' trash -- never trenches or digs around campsite.

uses a small gas stove to cook which conserves wood, leaving site in a more natural condition.



builds a *small* fire with down and dead wood -- when necessary.

AND THEN ...

there is the person who doesn't know, or worse yet, doesn't care about his effect on the Riverway or on others.

THIS PERSON ...

camps anywhere, whether it is designated or suited to the size of the group.

carries a big axe and huge knife to enhance the "woodsman" look.

cuts down live trees to demonstrate how pioneers did it in the "good old days".

peels bark from birch trees to give the campsite that "overused look".

refuses to carry a stove but prefers to cook over bonfires that use a lot of wood.

leaves the campfire unattended so it can start a destructive forest fire.

puts the food pack where animals can reach it without effort.

eats goodies in the tent to draw all the wild critters into camp.

refuses to use facilities along the river -- forgets to carry or use a trowel to bury human waste at back country locations.

travels in large noisy groups who forget how loud noises carry over water -- plays loud music to ruin everyone's canoe trip up and down the river.

leaves fish entrails, food, and trash around campsites and landings to attract animals.

WHICH PERSON ARE YOU?