

Shenandoah

NATIONAL PARK, VIRGINIA

SHENANDOAH NATIONAL PARK AND ITS SKYLINE DRIVE

To know Shenandoah National Park, to discover its secrets, take time to stop, look, listen, and explore. For adventure, leave your car at one of the overlooks or visitor-use areas, and hike or ride horseback along the trail. Between Skyline Drive and Shenandoah's boundaries are miles of ridges and valleys, and hills and hollows, laced with sparkling streams and waterfalls. Trout lurk in shadowed pools, and wild gardens of rock, vines, shrubs, and wildflowers nestle only a short walk from the busy roadway.

This 300-square-mile park lies astride an 80-mile segment of northern Virginia's Blue Ridge Mountains. By far the greatest number of visitors enjoy the scenic beauty from the park's 105-mile Skyline Drive. Seventy-five parking overlooks along the drive present panoramas of the Piedmont to the east and the Shenandoah River Valley to the west. Mileposts along the drive are numbered from north to south. This map and folder are keyed to the mileposts to serve as your guide to park features, facilities, and services. (Mileposts—numbered concrete markers beside the road—are placed every mile, but only on the mile. Example: Milepost 31. Features "between the posts" are shown in tenths of a mile. Example: Panorama Restaurant mile 31.5.)

FOR YOUR ENJOYMENT

Shenandoah's two visitor centers, Dickey Ridge at mile 4.6, and the Byrd Visitor Center at Big Meadows near milepost 51, are open from early spring to late autumn. Each center offers short orientation programs, exhibits, and information on the park features, facilities, and services; and sells maps, guides, color pictures, slides, books, and pamphlets relating to the park.

From the folder, *Visitor Activities*, free at visitor centers and entrance stations, you will learn where park naturalists conduct field trips in summer, and dates and hours for nightly campfire programs at Skyland, Big Meadows, Lewis Mountain, and Loft Mountain. On your own, throughout the year you can enjoy the self-guiding nature trails.

One of the best ways to learn what's going on in Shenandoah is to check one of the park's 50 outdoor bulletin boards for current activities and timely announcements. Park rangers will help you with special questions or in emergencies. For answers to questions prior to your arrival, write to the superintendent.

Report emergencies—fires, accidents, and the like—at ranger stations along the drive. There are four: Piney River (mile 22.2), Pinnacles (mile 37.4), Big Meadows (mile 51.3), and Simmons Gap (mile 73.2).

ACCOMMODATIONS

The Virginia Sky-Line Company, Inc. (Box 191, Luray, Va. 22835), a park concessioner, operates lodges accommodating more than 650 guests, at Skyland, Big Meadows, and Lewis Mountain, in the park's central district; restaurants, gift shops, and service stations; and facilities for campers, such as grocery and campers' supply stores, shower and laundry buildings, ice and wood sales lots, and riding stables. All facilities are operated in summer; some are unavailable in spring and autumn. Panorama Restaurant (mile 31.5) is open all year.

Another park concessioner, the Potomac Appalachian Trail Club (1718 N St. NW., Washington, D.C. 20036) maintains five trail cabins for hikers. Advance reservations and keys must be obtained by mail from the club.

There are five campgrounds and eight picnic areas in the park. Big Meadows Campground is open the year around.

Twenty-one trail-side shelters, each accommodating six hikers, are available on a first-come, first-served basis.

PREPARING FOR YOUR VISIT

Bring summer sportswear for daytime; sweaters and topcoats for evening (tuck in a raincoat, too). Bring sturdy shoes for walking; non-skid soles are good for rocks and slippery trails. Binoculars or fieldglasses will double your appreciation of the park, especially of its birds and animals. Film is available at the lodges.

Shenandoah Natural History Association (a non-profit educational organization) will mail literature, maps, pictures, and guide material at modest prices. When you write them—c/o Shenandoah National Park, Luray, Va. 22835—ask for a complete list of titles. Among them are:

Skyland, Heart of Shenandoah, the story of the founder of Skyland and the movement to create the park (paperback, \$2.50). **The Mammals of Shenandoah**. 69 pages on 40 wildlife species, with photographs (paperback, 50 cents). **Wildflowers in Color**. 266 full-color pictures with text on each flower (paperback, \$2.50; cloth, \$5.95). **Park Guide**, an excellent guide to the park in "Sunday supplement" format with articles on park features, maps, and notes on things to see and do (50 cents). **Topographic maps** of north, central, and south sections of the park (50 cents each, or \$1.25 per set).

Prices subject to change. Include 10 cents for handling charges for each item ordered, plus 3 percent State sales tax on orders for delivery in Virginia.

REGULATIONS

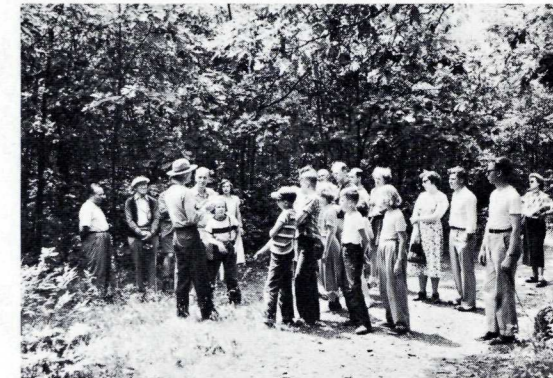
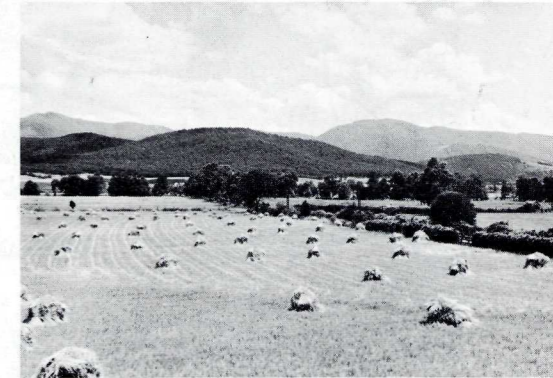
Park regulations governing traffic, camping, fires, pets, trout fishing, littering, firearms, feeding of wildlife, and other categories are posted on park bulletin boards. For complete regulations, write to the superintendent.

ADMINISTRATION

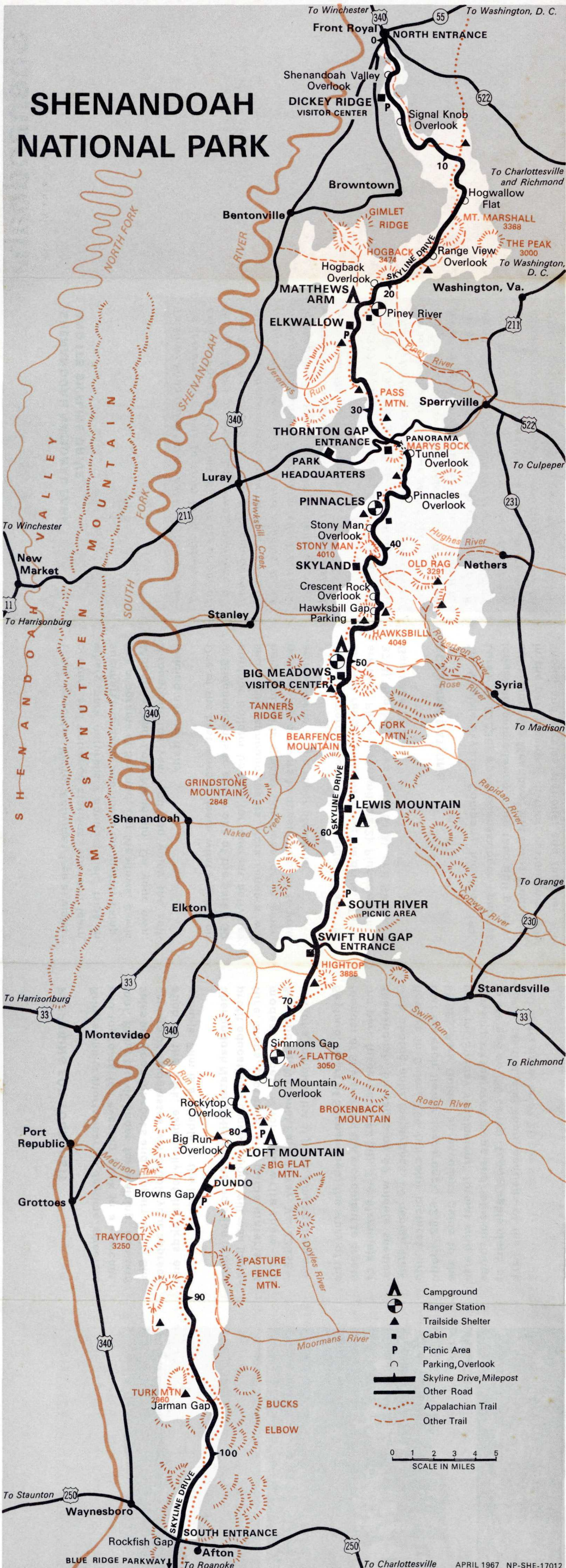
The administration offices of Shenandoah National Park are 4 miles west of Thornton Gap and 4 miles east of Luray, Va., on Lee Highway (U.S. 211). If you have questions or comments about the park, send them to the Superintendent, Shenandoah National Park, Luray, Va., 22835.

The Department of the Interior—the Nation's principal natural resource agency—has a special obligation to assure that our expendable resources are conserved, that our renewable resources are managed to produce optimum benefits, and that all resources contribute to the progress and prosperity of the United States, now and in the future.

U. S. Department of the Interior
National Park Service



SHENANDOAH NATIONAL PARK



POINT OF INTEREST

MILE

- 0.0 Junction with U.S. 340, south of Front Royal.
- 0.6 North Entrance Station.
- 2.8 Shenandoah Valley overlook. Across the valley is Signal Knob, Civil War communications post on Massanutten Mountain.
- 4.6 Dickey Ridge Visitor Center. Early spring to late autumn. Picnic areas. Exhibits, programs, information. Sales outlet for park literature, slides, maps.
- 21.0 Hogback overlook. Eleven bends in Shenandoah visible on clear day.
- 22.3 Matthews Arm Campground with trailer sites available late in 1967 season; thereafter, April-October.
- 24.1 Elkwallow. May-October. Picnic areas, lunch, souvenirs, gasoline.
- 31.5 Thornton Gap. U.S. 211 interchange. Entrance station. Panorama restaurant open all year; gift shop and service station. Trail to Marys Rock. Park headquarters 4 miles west.
- 32.4 Marys Rock Tunnel through 660 feet of rock (13-foot clearance).
- 36.7 Pinnacles. Picnic areas. Appalachian Trail junction.
- 39.1 Little Stony Man parking. Trail to sweeping view of Shenandoah Valley (1½ miles round trip).
- 41.7 Skyland Lodge. April-October. Dining room, gift shop, riding horses. Stony Man Nature Trail parking. Conducted hikes and campfire programs in summer.
- 42.6 Whiteoak Canyon parking. Trail to falls (5 miles round trip).
- 44.5 Crescent Rock overlook. Best view of Hawksbill Mountain, highest in park.
- 45.6 Hawksbill Gap parking. Trails to 4,049-foot Hawksbill Mountain. Conducted hikes in summer.
- 46.7 Upper Hawksbill parking. Trail to Hawksbill summit (2 miles round trip).
- 50.5 Dark Hollow Falls parking. Trail to falls (1½ miles round trip).
- 51.0 Big Meadows (Bryd) Visitor Center. Early spring to late autumn. Exhibits (on mountaineers), programs, information. Sales outlet for park literature, slides, maps. Hikes in summer.
- 51.3 Wayside and entrance to Big Meadows development. April-October. Coffeeshop, campers' store, gift shop, service station.
- (1 mi. off Skyline Drive) Big Meadows Lodge. May-October. Dining room, gift shop, riding horses. Campground with trailer sites (open all year); picnic areas. Showers, laundry, firewood, ice sales in summer. Trailer sewage disposal station. Swamp Nature Trail; amphitheater.
- 57.6 Lewis Mountain. June-September. Coffeeshop, cabins, campground with trailer sites, picnic areas. Campfire programs.
- 62.9 South River Picnic Area. Trail to falls (2½ miles round trip).
- 65.7 Swift Run Gap. U.S. 33 intersection. April-November. Coffeeshop, gift shop, service station.
- 78.2 Rockytop overlook. Big Run watershed, wild canyon scenery, trails.
- 79.8 Loft Mountain. June-October. Campgrounds with trailer sites, picnic areas. Trailer-sewage disposal station. Campers' store, service station, showers, laundry. Amphitheater; hikes in summer.
- 83.7 Dundo. Temporary picnic and campgrounds.
- 104.6 South Entrance Station.
- 105.4 Rockfish Gap. U.S. 250 intersection. 5 miles to Humpback Rocks Visitor Center (Blue Ridge Parkway)

