

Shenandoah

NATIONAL PARK, VIRGINIA

To know Shenandoah National Park, to discover its secrets, take time to stop, look, listen, and explore. For adventure, leave your car at one of the overlooks or visitor-use areas, and hike or ride horseback along the trail. Between Skyline Drive and Shenandoah's boundaries are miles of ridges and valleys, and hills and hollows, laced with sparkling streams and waterfalls. Trout lurk in shadowed pools, and wild gardens of rock, vines, shrubs, and wildflowers nestle only a short walk from the busy roadway.

This 300-square-mile park lies astride an 80-mile segment of northern Virginia's Blue Ridge Mountains. By far the greatest number of visitors enjoy the scenic beauty from the park's 105-mile Skyline Drive. Seventy-five parking overlooks along the drive present panoramas of the Piedmont to the east and the Shenandoah River Valley to the west. Mileposts along the drive are numbered from north to south. This map and folder are keyed to the mileposts to serve as your guide to park features, facilities, and services. (Mileposts—numbered concrete markers beside the road—are placed every mile, but only on the mile. Example: Milepost 31. Features "between the posts" are shown in tenths of a mile. Example: Panorama Restaurant Mile 31.5.)

Shenandoah's two visitor centers, Dickey Ridge at Mile 4.6, and the Byrd Visitor Center at Big Meadows near Milepost 51, are open from early spring to late autumn. Each center offers short orientation programs, exhibits, and information on the park features, facilities, and services; and sells maps, guides, color pictures, slides, books, and pamphlets relating to the park.

From the folder, *Visitor Activities*, free at visitor centers and entrance stations, you will learn where park naturalists conduct field trips in summer, and dates and hours for nightly campfire programs at Mathews Arm, Big Meadows, Lewis Mountain, and Loft Mountain. On your own, throughout the year you can enjoy the self-guiding nature trails.

One of the best ways to learn what's going on in Shenandoah is to check one of the park's 50 outdoor bulletin boards for current activities

and timely announcements. Park rangers will help you with special questions or in emergencies. For answers to questions prior to your arrival, write to the superintendent.

ACCOMMODATIONS

The Virginia Sky-Line Company, Inc. (Box 191, Luray, Va. 22835), a park concessioner, operates lodges accommodating more than 800 guests, at Skyland, Big Meadows, and Lewis Mountain, in the park's central district; restaurants, gift shops, and service stations; and facilities for campers, such as grocery and campers' supply stores, shower and laundry buildings, ice and wood sales lots, and riding stables. All facilities are operated in summer; some are unavailable in spring and autumn. Panorama Restaurant (Mile 31.5) is open all year.

Another park concessioner, the Potomac Appalachian Trail Club (1718 N St. NW., Washington, D.C. 20036) maintains five trail cabins for hikers. Advance reservations and keys must be obtained by mail from the club.

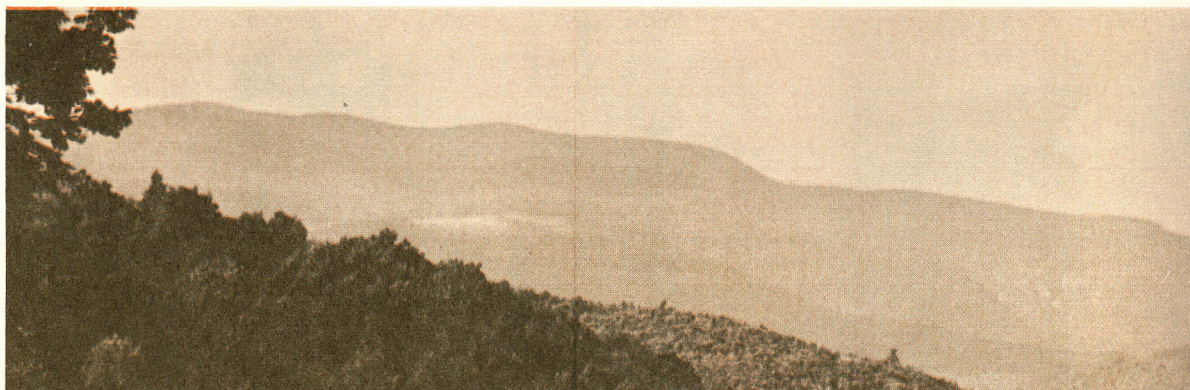
There are four campgrounds and eight picnic areas in the park. Big Meadows Campground is open the year around.

Twenty-one trail-side shelters, each accommodating six hikers, are available on a first-come, first-served basis.

PREPARING FOR YOUR VISIT

Bring summer sportswear for daytime; sweaters and topcoats for evening (tuck in a raincoat, too). Bring sturdy shoes for walking; non-skid soles are good for rocks and slippery trails. Binoculars or fieldglasses will double your appreciation of the park, especially of its birds and animals. Film is available at the lodges.

Shenandoah Natural History Association (a non-profit educational organization) will mail literature, maps, pictures, and guide material at modest prices. When you write them—c/o Shenandoah National Park, Luray, Va. 22835—ask for a complete list of titles. Among them are:



The Mammals of Shenandoah. 69 pages on 40 wildlife species, with photographs (paperback, 50 cents). **Wildflowers in Color.** 266 full-color pictures with text on each flower (paperback, \$2.50; cloth, \$5.95). **Park Guide,** an excellent guide to the park in "Sunday supplement" format with articles on park features, maps, and notes on things to see and do (50 cents). **Topographic maps** of north, central, and south sections of the park (50 cents each, or \$1.25 per set).

Prices are subject to change. Include 10 cents for handling charges for each item ordered, plus 4 percent Virginia sales tax.

REGULATIONS

Maximum speed is 35 miles per hour. Lower speeds are posted in many areas. Commercial trucking on park business only. Vehicles must stay on public roads. Report all accidents to the nearest park ranger as soon as possible.

Stay on designated trails. Do not shortcut between zig-zags or switchbacks. Never hike alone; tell someone where you are going and when you will return. Bicycles and motor vehicles are prohibited on trails.

Collecting souvenirs, picking flowers, and acts of vandalism are prohibited.

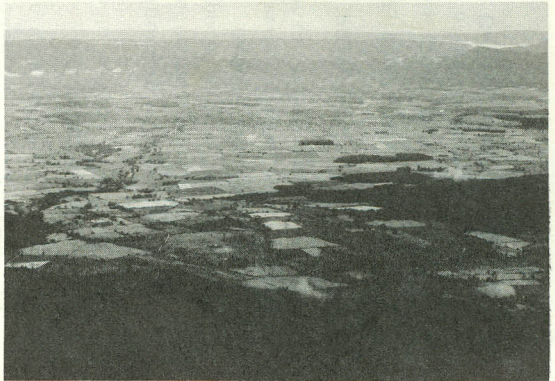
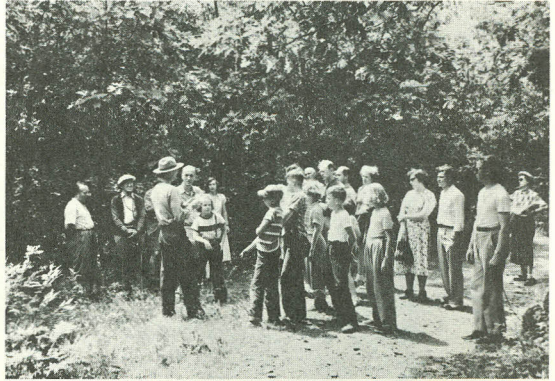
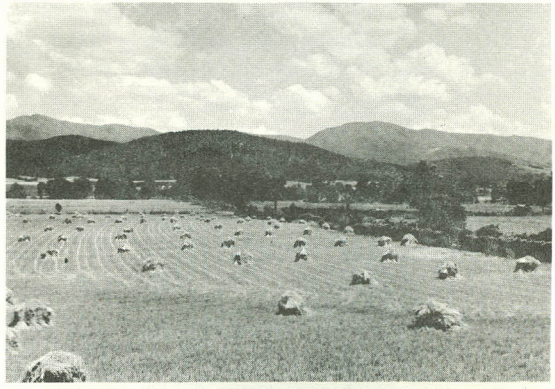
From June 1 to October 31, camping is limited to 14 days.

Pets must be leashed and, except seeing-eye dogs, are not allowed in public buildings.

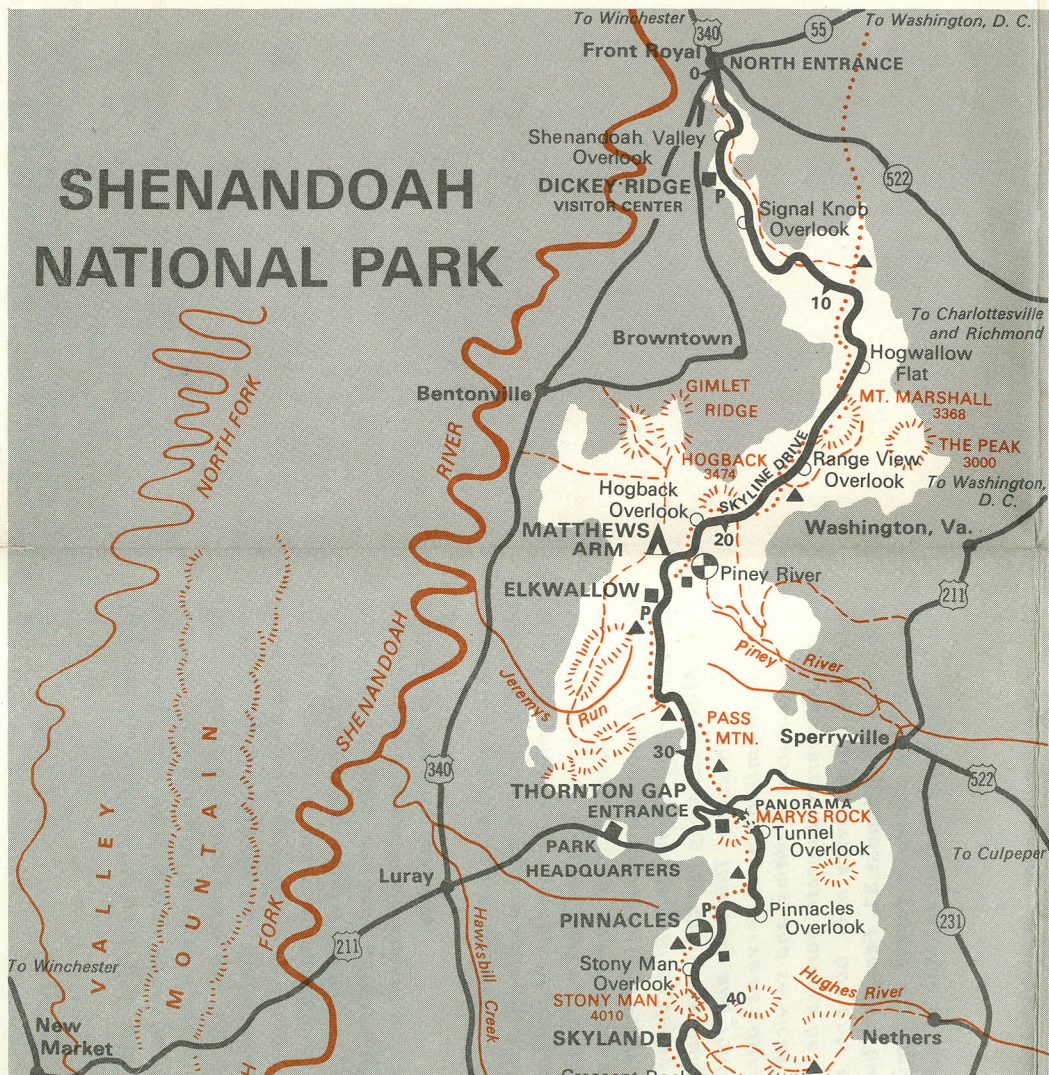
A fire permit is required for camping in back-country areas. Make sure your fire is out. Report all forest fires to the nearest park ranger.

All park animals are wild. Do not feed or approach them.

Hunting with any kind of weapon is prohibited. Firearms must be declared and made inoperative at park entrances.

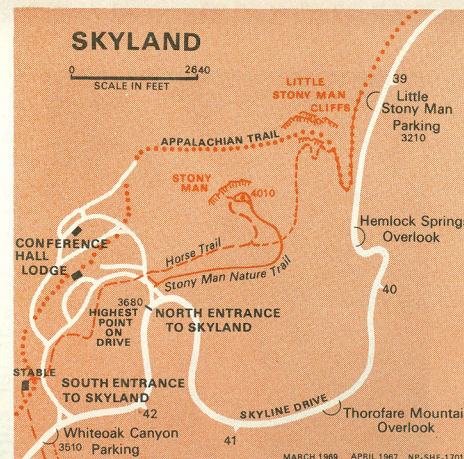
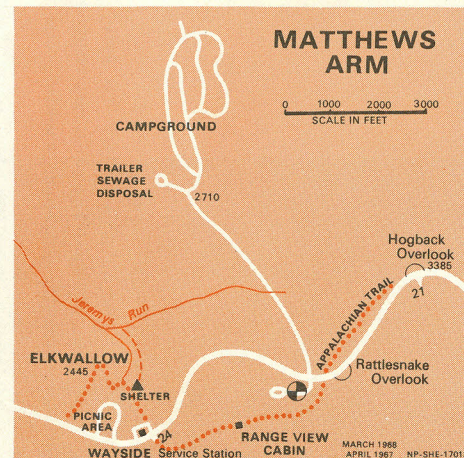


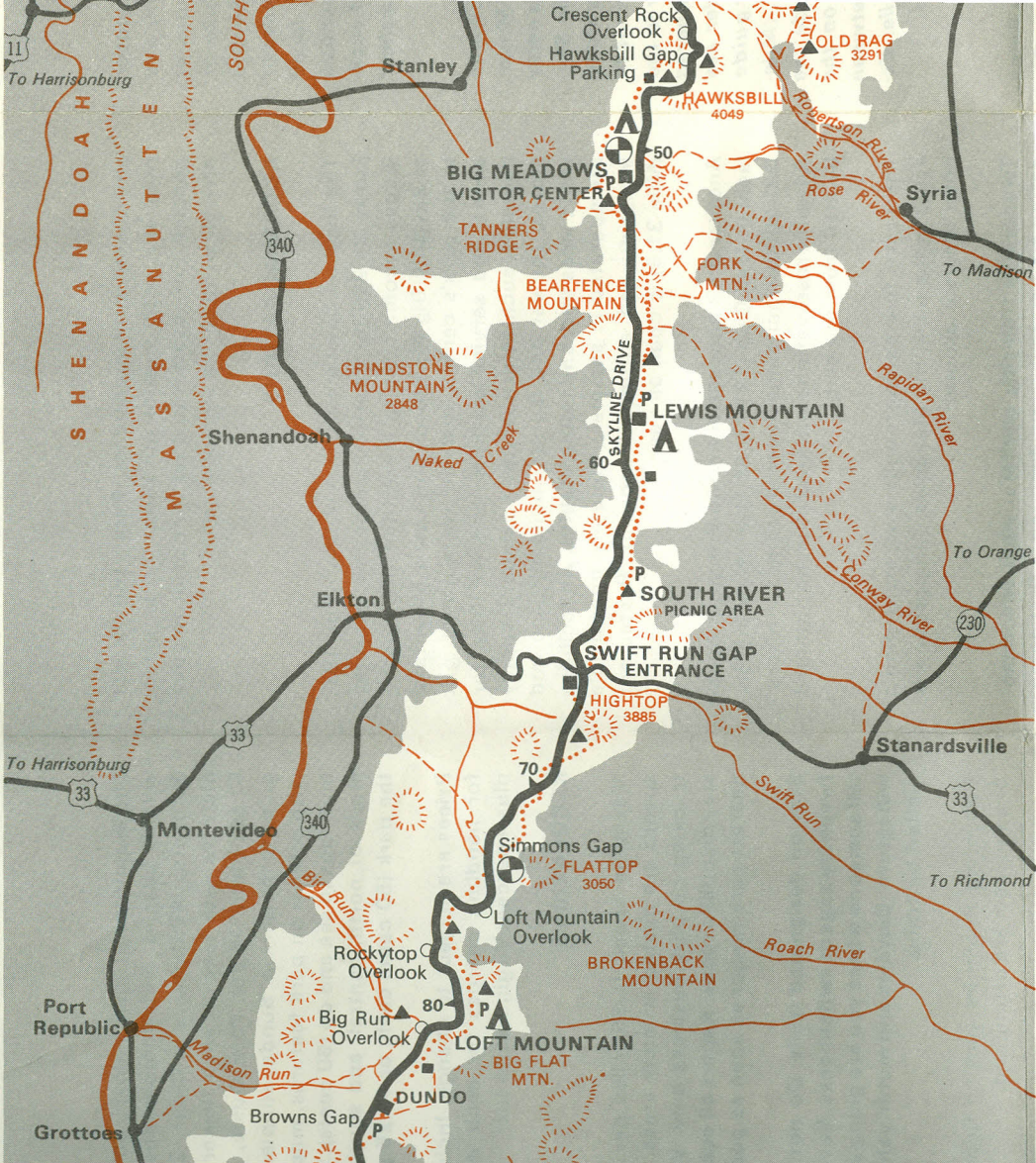
SHENANDOAH NATIONAL PARK



MILE POINT OF INTEREST

- 0.0 Junction with U.S. 340, south of Front Royal.
- 0.6 North Entrance Station.
- 2.8 Shenandoah Valley overlook. Across the valley is Signal Knob, Civil War communications post on Massanutten Mountain.
- 4.6 Dickey Ridge Visitor Center. Picnic area. Exhibits, programs, information. Sales outlet for park literature, slides, maps.
- 21.0 Hogback overlook. Eleven bends in Shenandoah visible on clear day.
- 22.3 Mathews Arm Campground. Tent and trailer sites. Trailer sewage disposal station.
- 24.1 Elkwallow. June-October. Picnic area, lunch, campers' store, souvenirs, gasoline.
- 31.5 Thornton Gap. U.S. 211 interchange. Entrance station. Panorama Restaurant open all year; gift shop and service station. Trail to Marys Rock. Park headquarters 4 miles west.
- 32.4 Marys Rock Tunnel through 660 feet of rock (13-foot clearance).
- 36.7 Pinnacles. Picnic area. Appalachian Trail junction.
- 39.1 Little Stony Man parking. Trail to sweeping view of Shenandoah Valley (1½ miles round trip).





41.7 Skyland Lodge. April-October. Dining room, gift shop, riding horses. Stony Man Nature Trail parking.

42.6 Whiteoak Canyon parking. Trail to falls (5 miles round trip).

44.5 Crescent Rock overlook. Best view of Hawksbill Mountain, highest in park.

45.6 Hawksbill Gap parking. Trails to 4,049-foot Hawksbill Mountain. Conducted hikes in summer.

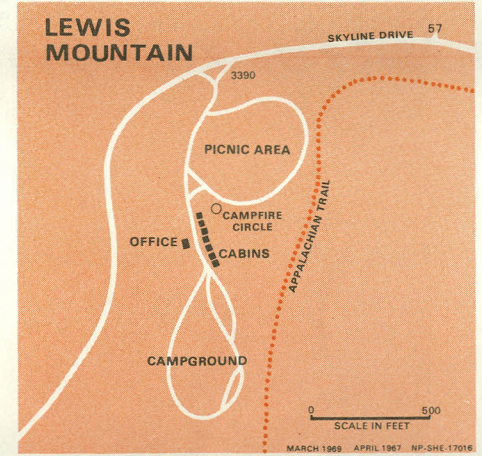
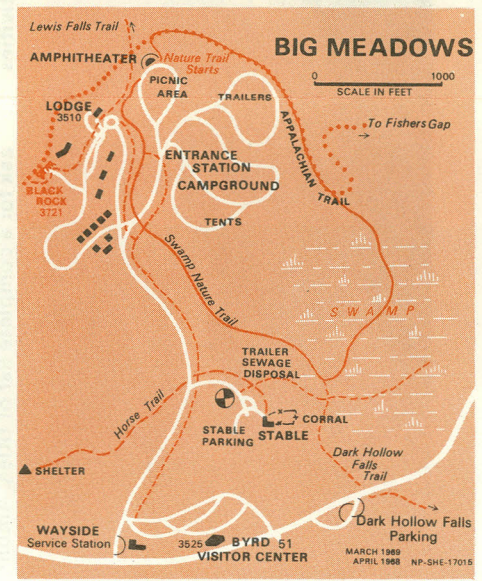
46.7 Upper Hawksbill parking. Trail to Hawksbill summit (2 miles round trip).

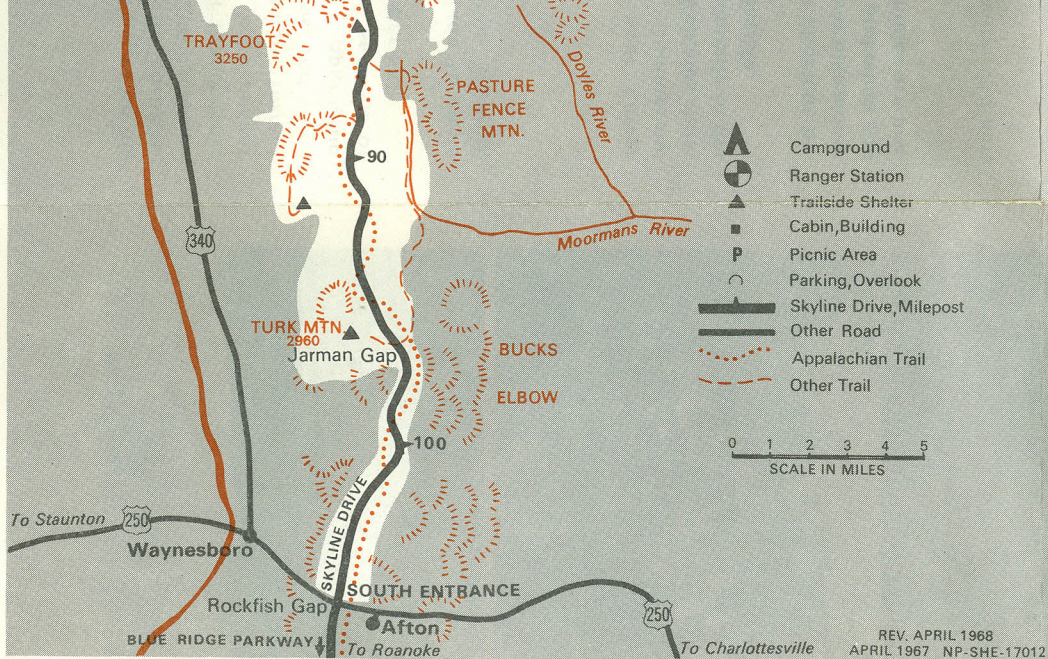
50.5 Dark Hollow Falls parking. Trail to falls (1½ miles round trip).

51.0 Big Meadows. Byrd Visitor Center. Exhibits (on mountaineers), programs, information. Sales outlet for park literature, slides, maps. Hikes in summer.

51.3 Wayside and entrance to Big Meadows development. April-October. Coffeeshop, campers' store, gift shop, service station.

(1 mi. Big Meadows Lodge. Mid-May to off October. Dining room, gift shop, riding horses. Campground with trailer sites (open all year); picnic area. Showers, laundry, firewood, ice sales in summer. Trailer sewage disposal station. Swamp Nature Trail; campfire programs.





57.6 Lewis Mountain. June-September. Cabins, campground with trailer sites, picnic area, firewood. Campfire programs.

62.9 South River Picnic Area. Trail to falls (2½ miles round trip).

65.7 Swift Run Gap. U.S. 33 intersection. April-November. Coffeeshop, gift shop, service station.

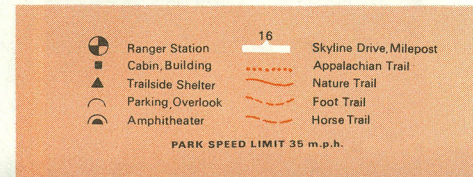
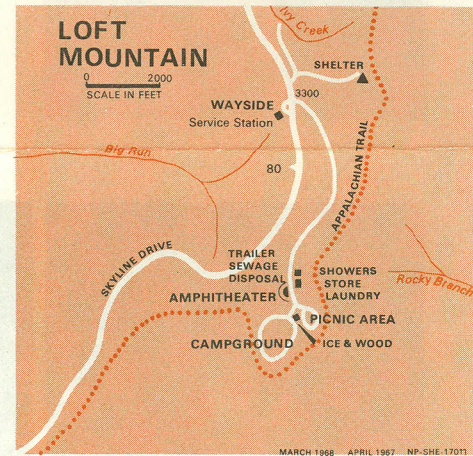
78.2 Rockytop overlook. Big Run watershed, wild canyon scenery, trails.

79.8 Loft Mountain. Campground with trailer sites, picnic area. Trailer sewage disposal station. Campers' store, service station, showers, laundry, ice, firewood. Hikes and campfire programs in travel season.

83.7 Dundo. Picnic area.

104.6 South Entrance Station.

105.4 Rockfish Gap. U.S. 250 intersection. 5 miles to Humpback Rocks Visitor Center (Blue Ridge Parkway).



ADMINISTRATION

The administration offices of Shenandoah National Park are 4 miles west of Thornton Gap and 4 miles east of Luray, Va., on Lee Highway (U.S. 211). If you have questions or comments about the park, send them to the Superintendent, Shenandoah National Park, Luray, Va., 22835.

As the Nation's principal conservation agency, the Department of the Interior has basic responsibilities for water, fish, wildlife, mineral, land, park, and recreational resources. Indian and Territorial affairs are other major concerns of America's "Department of Natural Resources." The Department works to assure the wisest choice in managing all our resources so each will make its full contribution to a better United States—now and in the future.

U. S. Department of the Interior
National Park Service

