

Spring in Shenandoah

National Park Service
U.S. Department of the Interior



Shenandoah National Park



Ranger Programs: April 4 - May 22

Programs will be cancelled in the event of lightning or other severe weather.

Delays Possible

Skyline Drive, the famed roadway through the park, dates from the 1930s. It is now being resurfaced. During 2009, certain sections of the Drive between Thornton Gap (mile 31.5) and Swift Run Gap (mile 65.5) and between the North Entrance Station near Front Royal and Thornton Gap will be reduced to one-lane traffic, sunrise to sunset, on weekdays. You may have to wait a few minutes. The resurfaced Drive will be ready for Shenandoah's 75th anniversary (2011).

SKYLAND

*Programs not offered May 9-10 due to Wildflower Weekend

mile 41.7 & 42.5

SUN* MON TUE WED THU FRI SAT*

Limberlost Walk 1.3 miles. 2 hrs. Meet at Limberlost Trailhead (milepost 43).	*10:00 am						
Wild About Bears 20-minute talk. Skyland Dining Hall Terrace.	*1:30 pm					10:00 am	
Ancient Volcano Hike 2 miles. 2 hrs. Meet at Timber Hollow Overlook (mile 43.3).		10:00 am				10:00 am	
Millers Head Hike 1.6 miles. 2 hrs. Meet at the new Skyland Amphitheater.			10:00 am				
An Insider's Insight 20-minute talk. Skyland Dining Hall Terrace.			1:30 pm				
Stony Man Hike 1.6 miles. 2 hrs. Meet at Stony Man Trailhead (mile 41.7).				2:30 pm			*10:00 am
Historic Massanutten Lodge 1 hr. Meet at Skyland Conference Hall (lower road).					2:30 pm		*2:30 pm

BIG MEADOWS

*Programs not offered May 9-10 due to Wildflower Weekend

milepost 51

SUN* MON TUE WED THU FRI SAT*

Terrace Talk 10 minutes. Topics Vary. Byrd Visitor Center.	Check at Information Desk for talk schedule.						
Discovery Walk 1 hr. Meet at Byrd Visitor Center.	*10:00 am	2:30 pm			2:30 pm		
More Than a Meadow 1 mile. 1.5 hrs. Meet at Byrd Visitor Center.	*2:30 pm			10:00 am		2:30 pm	
Live Birds of Prey 1 hour. Big Meadows Amphitheater, in picnic area.			10:00 am				*10:00 am
Appalachian Trail Hike 2 miles. 2 hrs. Meet at Milam Gap Parking Area (mile 52.8).			2:30 pm				
Wild About Bears 20-minute talk. Byrd Visitor Center.				1:30 pm			
An Insider's Insight 20-minute talk. Byrd Visitor Center.					10:00 am		
Junior Ranger Program Kids ages 7-12 with parent/adult. 1.5 hrs. Meet at Byrd Visitor Center.							*2:00 pm
Picture Shenandoah 45-minute talk. Byrd Visitor Center.							*7:30 pm



National Junior Ranger Day
April 25, 2009

Special activities available. Check at a visitor center or the park website (www.nps.gov/shen) for information.



Wildflower Weekend
May 9-10, 2009

Take a day or two to appreciate the tremendous diversity of wildflowers growing here in the Blue Ridge during Shenandoah's Wildflower Weekend. Check at a visitor center or the park website (www.nps.gov/shen) for information about special guided walks and a program schedule.

Regular Ranger Program schedule (left) will be suspended during Wildflower Weekend.

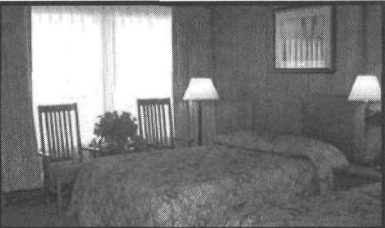
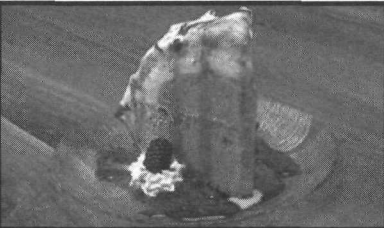
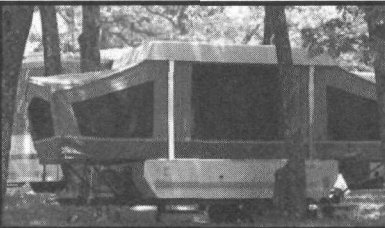
Pets in Shenandoah

Wildlife and pets are a dangerous combination. If you bring your pet to Shenandoah, keep it on a lead no longer than six feet at all times. Pets are not allowed on ranger programs or on the following trails:

Fox Hollow Trail (mile 4.6)
Traces Trail (mile 22.2)
Stony Man Trail (mile 41.7)
Limberlost Trail (milepost 43)
Dark Hollow Falls Trail (mile 50.7)
Story of the Forest Trail (milepost 51)
Bearfence Rock Scramble (mile 56.4)
Frazier Discovery Trail (mile 79.5)
Old Rag Ridge Trail
Old Rag Saddle Trail

Visitor Services

March 27 - May 24, 2009



Dickey Ridge Visitor Center (mile 4.6)

April 9 - April 23, 8:30 a.m. - 5:00 p.m. (Thursday-Monday)

April 24 - May 24, 8:30 - 5:00 p.m. (daily)

information, exhibits, orientation movie, park store, picnic grounds

> **Lodging Reservations:** www.visitshenandoah.com or (800) 999-4714

> **Campground Reservations:** www.recreation.gov or (877) 444-6777

Mathews Arm Campground (mile 22.2)

Opens May 15: \$15,

some sites reservable, group sites available, sewage disposal, no trailer hookups

Elkwallow Wayside (mile 24.1)

Opens April 9: grill, groceries, gas, camping supplies, gift shop, picnic grounds

9:00 a.m. - 5:30 p.m. (daily)

Skyland Resort (miles 41.7 and 42.5)

Opens April 2, 3:00 p.m.

dining room; lodging varying from comfortable rooms overlooking the Shenandoah Valley to historic cabins to spacious suites; pet-friendly rooms available, gift shop, programs, and live entertainment

Dining Room

Breakfast 7:30 a.m. - 10:00 a.m.

Lunch noon - 2:00 p.m.

Dinner 5:30 p.m. - 9:00 p.m.

Gift Shop: 8:00 a.m. - 9:00 p.m.

Taproom: 2:00 p.m. - 11:00 p.m.

Stables: 10:00 a.m., 11:30 a.m., 1:00 p.m., 2:30 p.m.

Big Meadows (milepost 51)

Byrd Visitor Center: Opens April 3

8:30 a.m. - 5:00 p.m. (daily)

information, exhibits, ranger programs, movies, park store

Wayside: Opens March 27, restaurant, gift shop, camping supplies, gas

9:00 a.m. - 5:30 p.m. (Monday-Thursday)

8:00 a.m. - 7:00 p.m. (Friday/Saturday/Sunday)

Big Meadows Lodge

Opens May 22, 3:00 p.m.

historic dining room, taproom, live entertainment, gift shop, lodging includes rustic cabins, motel-type rooms, and modern suites

Dining Room

Breakfast 7:30 a.m. - 10:00 a.m.

Lunch noon - 2:00 p.m.

Dinner 5:30 p.m. - 9:00 p.m.

Taproom: 2:00 p.m. - 11:00 p.m.

Gift Shop: 8:00 a.m. - 9:00 p.m.

Campground: Opens March 27

\$20 May 5 to November 17; \$17 all other times
group sites available, sewage disposal, no trailer hookups

Showers/Laundry/Woodyard: Opens March 27, noon
8:00 a.m. - 8:00 p.m. (daily)

Lewis Mountain (mile 57.6)

Cabins: Opens April 10, 3:00 p.m.

covered patios, picnic tables and grills, secluded forest setting

Campstore: Opens April 10: noon - 7:00 p.m.

groceries, camping supplies, gifts, wood, ice, showers/laundry

9:00 a.m. - 6:00 p.m. (Sunday-Thursday)

9:00 a.m. - 7:00 p.m. (Friday/Saturday)

Campground: Opens April 10

\$15, first-come, first-served, no trailer hookups

Loft Mountain (mile 79.5)

Loft Mountain Information Center

Opens May 23, weekends and holidays only

Wayside: Opens April 23: restaurant, gift shop, gas

9:00 a.m. - 5:30 p.m. (daily)

Campstore: Opens May 15: noon - 5:30 p.m.

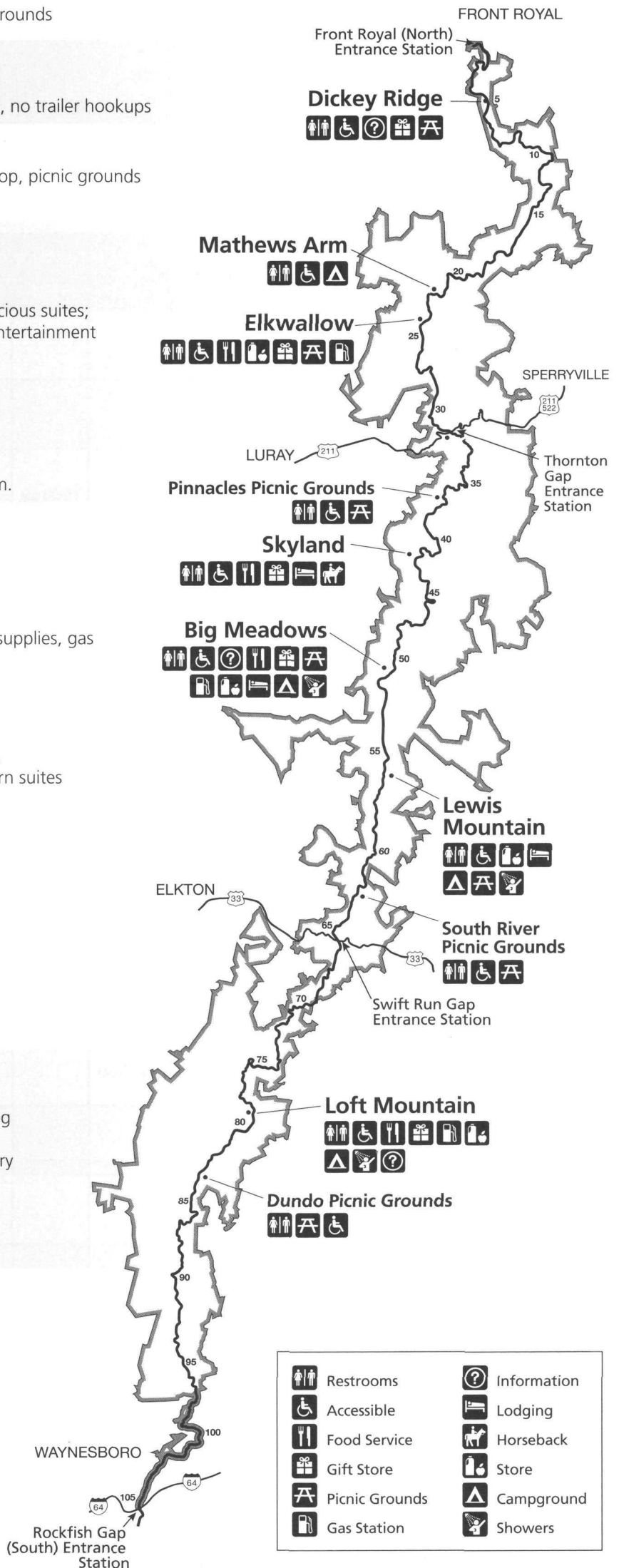
8:00 a.m. - 5:30 p.m. (daily)

Showers/Laundry: Opens May 15: noon - 8:00 p.m.

8:00 a.m. - 8:00 p.m. (daily)

Campground: Opens May 15

\$15, some sites reservable, group sites available, showers/laundry, sewage disposal, no trailer hookups



	Restrooms		Information
	Accessible		Lodging
	Food Service		Horseback
	Gift Store		Store
	Picnic Grounds		Campground
	Gas Station		Showers