

Geologic Map of Tallgrass Prairie National Preserve

Kansas

National Park Service
U.S. Department of the Interior



Geologic Resources Inventory
Natural Resource Stewardship and Science

This map displays geologic map data compiled by the National Park Service Geologic Resources Inventory. It is not a substitute for site-specific investigations. All GRI products are available at <https://go.nps.gov/gripubs>.

Source Maps:

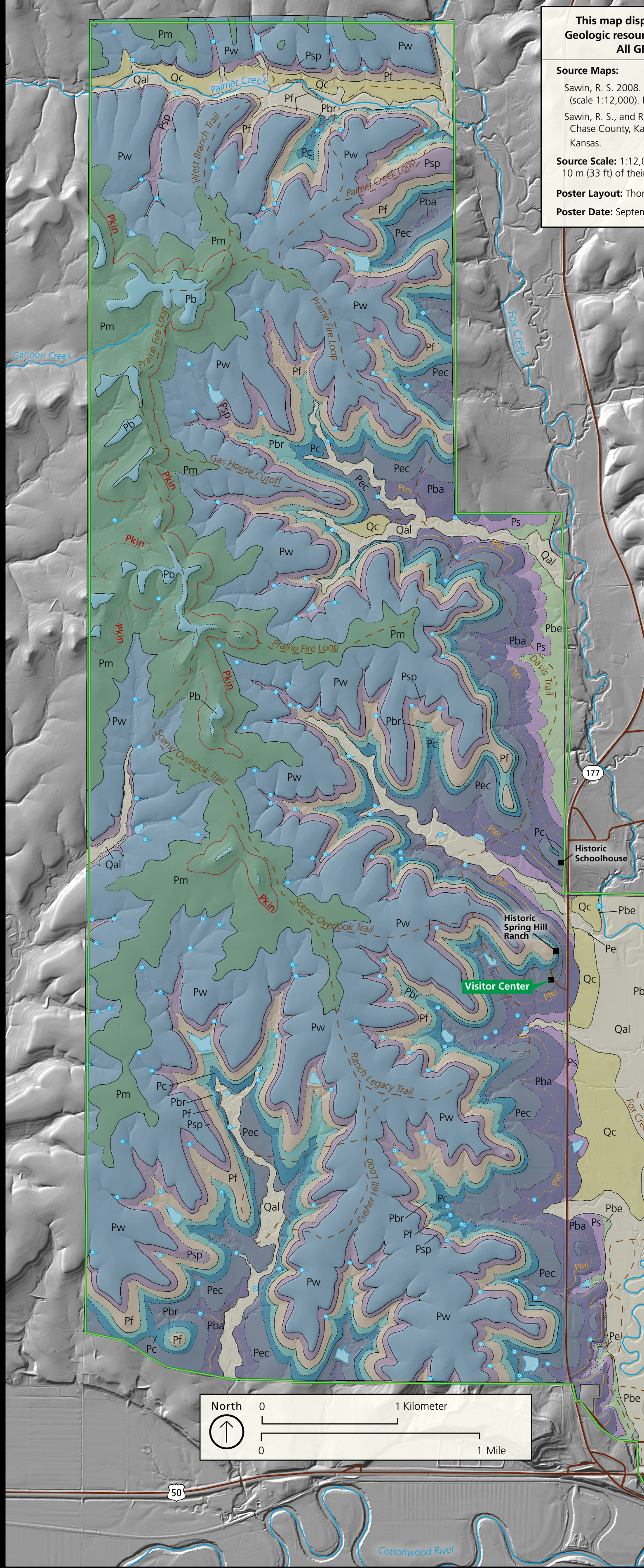
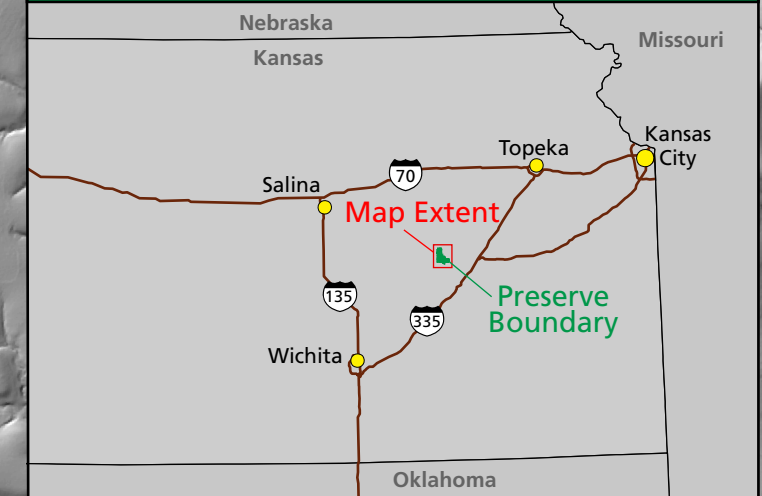
Sawin, R. S. 2008. Surficial geology of the Tallgrass Prairie National Preserve, Chase County, Kansas (scale 1:12,000). Map Series 119(A). Kansas Geological Survey, Lawrence, Kansas.
Sawin, R. S., and R. C. Buchanan. 2008. Water-bearing units of the Tallgrass Prairie National Preserve, Chase County, Kansas (scale 1:12,000). Map Series 119(B). Kansas Geological Survey, Lawrence, Kansas.

Source Scale: 1:12,000. According to US National Map Accuracy Standards, features are within 10 m (33 ft) of their true location.

Poster Layout: Thom Curdts and Lucas Chappell (Colorado State University)

Poster Date: September 2022

Location Map



Cattle graze at Tallgrass Prairie National Preserve, filling a niche once held by bison. The bedrock, exposed at the surface, made the landscape inhospitable to "sodbusters" and protected the native tallgrass prairie landscape from development. Photograph by Katie KellerLynn (Colorado State University).

Legend

- Preserve boundary
- Road
- Trail
- Point of interest
- Spring
- Lake or stream

Geologic Contacts

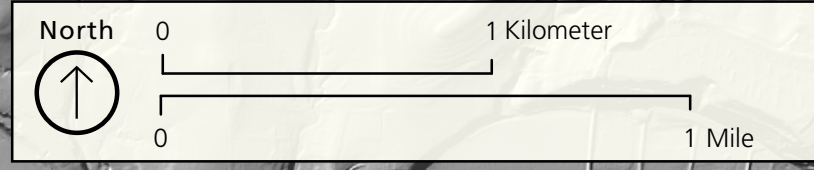
- Known or certain
- Concealed

Linear Geologic Units

- Pkin**: Matfield Shale, Kinney Limestone Member (Permian), solid where known or certain, dotted where concealed
- Ptei**: Bader Limestone, Eiss Limestone Member (Permian), solid where known or certain, dotted where concealed

Geologic Units

- Qal: Alluvium (Holocene)
- Qc: Colluvium and alluvium (Pleistocene)
- Pb: Barneston Limestone, Florence Limestone Member (Permian)
- Pm: Matfield Shale (Permian)
- Pw: Wreford Limestone (Permian)
- Psp: Speiser Shale (Permian)
- Pf: Funston Limestone (Permian)
- Pbr: Blue Rapids Shale (Permian)
- Pc: Crouse Limestone (Permian)
- Pec: Easley Creek Shale (Permian)
- Pba: Bader Limestone (Permian)
- Ps: Stearns Shale (Permian)
- Pbe: Beattie Limestone (Permian)
- Pe: Eskridge Shale (Permian)



Strong City

50

Cottonwood River