



ARTICLE

Trail of Tears National Historic Trail Fall Newsletter 2021

[Trail Of Tears National Historic Trail \(https://www.nps.gov/trte/\)](https://www.nps.gov/trte/)

Read the latest project updates and completions from the National Trails Office of the National Park Service (NPS).

National Trails Welcomes New Staff

Paula Ogden-Muse has joined the National Trails Office (NTIR) as the Team Lead for Interpretation. She began her Department of Interior career as a wilderness ranger, interpreter, and then an education specialist at North Cascades National Park. She's also worked for the Upper Mississippi River National Wildlife and Fish Refuge in Wisconsin; Pipe Spring National Monument in Arizona; and, most recently, as the Chief of Interpretation for Fort Sumter and Fort Moultrie National Historical Park and Charles Pinckney National Historic Site in South Carolina. She's settling into Santa Fe with her husband, Jeff, a writer who also works in historical interpretation and environmental education. In their free time, you'll find them visiting local museums; walking urban paths and forested trails; and birding every chance they get.

[Contact Paula \(https://www.nps.gov/common/utilities/sendmail\)](https://www.nps.gov/common/utilities/sendmail)



Photo/Paula Ogden-Muse

[/sendmail.cfm?o=7B84CEB79CECA0BB90BE1DE2F402B8A86693569C12B18389&r=/articles/000/trail-of-tears-national-historic-trail-fall-newsletter-2021.htm](https://www.nps.gov/common/utilities/sendmail.cfm?o=7B84CEB79CECA0BB90BE1DE2F402B8A86693569C12B18389&r=/articles/000/trail-of-tears-national-historic-trail-fall-newsletter-2021.htm)

Faith Welty has joined NTIR as an Outdoor Recreation Planner in June 2021. Faith holds a Bachelor of Science in Landscape Architecture from Purdue University in West Lafayette, Indiana. Soon after graduation, she stepped into the role of a Landscape Architecture Fellow with the National Park Service's Rivers, Trails, and Conservation Assistance Program (RTCA) based at the



Photo/Faith Welty

Center for Community and Environmental Design at Purdue University. In her free time, you will find her engaging with the outdoors and cultural arts (very excited to experience more in Santa Fe!). As part of her duties, she will support NTIR in providing planning assistance to local partners and associations along the historic trails ensuring preservation and recognition of our National Historic Trails.

[Contact Faith \(https://www.nps.gov/common/utilities/sendmail\)](https://www.nps.gov/common/utilities/sendmail)

[/sendemail.cfm?o=4D84D2AF95ECB8B998AF0A8FF707B8E3419250&r=/articles/000/trail-of-tears-national-historic-trail-fall-newsletter-2021.htm\)](https://www.nps.gov/common/utilities/sendemail.cfm?o=4D84D2AF95ECB8B998AF0A8FF707B8E3419250&r=/articles/000/trail-of-tears-national-historic-trail-fall-newsletter-2021.htm)

Staff Updates

NTIR is pleased to announce a few changes within the office. Coreen Donnelly is the new lead for the Design & Development Team, and Carole Wendler, who many have worked with as the lead for the Interpretation Team, is now the Deputy Superintendent, replacing John Canella. Congratulations to these staff members on their new positions!

Lillis Urban, who was leading NTIR's feasibility study process for the past year, has moved on. Jill Jensen, one of our cultural resources staff, will be temporarily promoted into the planning position and will be leading the feasibility study process for the next four months. NTIR is conducting feasibility studies for the potential Pike and Emancipation National Historic Trails (NHTs).

Work in the Time of Covid

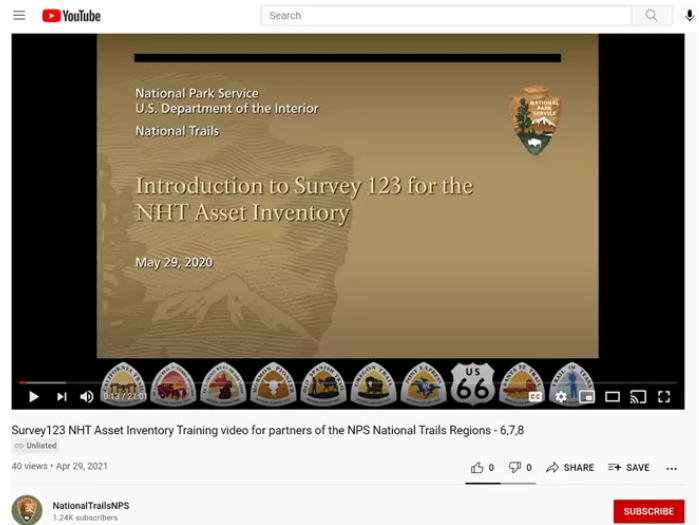
NTIR staff have been teleworking full time from home since mid-March 2020, and will continue to do so until notified to return to our offices. Meanwhile, personnel are available during regular work hours through their usual email addresses and cell phone numbers. If you need a staffer's cell number, call 505-988-6098 in Santa Fe or 801-741-1012 ext 119 to inquire.

Cherokee Youth Fellowship

Following a review of applications and interviewing, an applicant was selected and has accepted the fellowship position. The intern is going through the onboarding and background investigation processes, and is slated to start work at the end of September this year. NTIR is partnering with American Conservation Experience (ACE) to hire this Cherokee Youth Fellow for an 18-month term position. The fellow will assist with developing web media components and videos about traveling the Trail of Tears National Historic Trail.

National Historic Trails Wayside/Sign Inventory Application

The mobile application (app) is used to track assets along the trail such as interpretive waysides, museum exhibits, and NHT road or pedestrian signs. The app utilizes a user-friendly interface, similar to a fillable PDF, and eliminates the use of complex and sometimes costly GPS devices. The instructional video for the National Historic Trail Waysides/Signs Inventory App (NHT Asset Inventory) can now be viewed on YouTube. Below is the URL for the training video to provide more information to members regarding the NHT Wayside Signage Inventory App.



NPS Image

[Survey123 NHT Asset Inventory Training video for partners of the NPS National Trails Regions - 6,7,8 - YouTube \(https://www.youtube.com/watch?v=6xPy5wi8PLc\)](https://www.youtube.com/watch?v=6xPy5wi8PLc)

If you are a member of the Trail of Tears Association and interested in joining this effort, please contact Troy Wayne Poteete concerning your interest and CC National Trails GIS Specialist Brian Deaton on the email.

Middle Tennessee State University

The agreement with Middle Tennessee State University, Center for Historic Preservation (CHP) ended in June 2021. Deliverables include a narrative report and booklet, "Rivers, Rails & Roads: Transportation During the Cherokee Removal 1837 – 1839," which is available online and in printed form. (And can be found below.) CHP sent copies to the Trail of Tears National Association as well as to each of the state chapters. Amy Kostine gave a lecture on the project at a virtual teacher workshop and will be presenting in November as well. Additionally, CHP completed a National Register update for Brown's Ferry Tavern and updated and submitted a National Register Nomination for the Higginbotham Turnpike in Van Buren County, TN, which has been approved and listed. The final document produced as part of this agreement is an in-house draft "Transportation Resources on the Cherokee Trail of Tears, 1834-1840" National Register of Historic Places Multiple Property Documentation Form.

Route refinement proposals

In July 2021, NTIR finalized the proposed Trail of Tears NHT refinement from Farmington (in St. Francois County)-Caledonia (in Washington County), MO, submitted by Deloris Wood. Five other route refinement proposals are under review.



NPS Image

External Projects

- Pedestrian archeological survey has been completed for the United States Department of Agriculture (USDA) Rural Utilities Service's project to construct a high-speed fiber optic network within the Hanging Dog and Grape Creek communities in western North Carolina. The survey results were reported in the draft Archeological Survey for the Blue Ridge Mountain EMC's Community Connect Grant Project in the Hanging Dog and Grape Creek Communities, Cherokee County, North Carolina.
- Our office has commented on two Tennessee Valley Authority projects through our internal environmental review system. Both projects are for the retirement of coal plants in Tennessee and potential energy generation replacements. The boundaries for some of the alternatives for the replacement energy projects are not well-defined and encompass Trail of Trails NHT alignments. In both instances this was communicated and the geospatial data for the trail alignment was provided.

Signing Updates

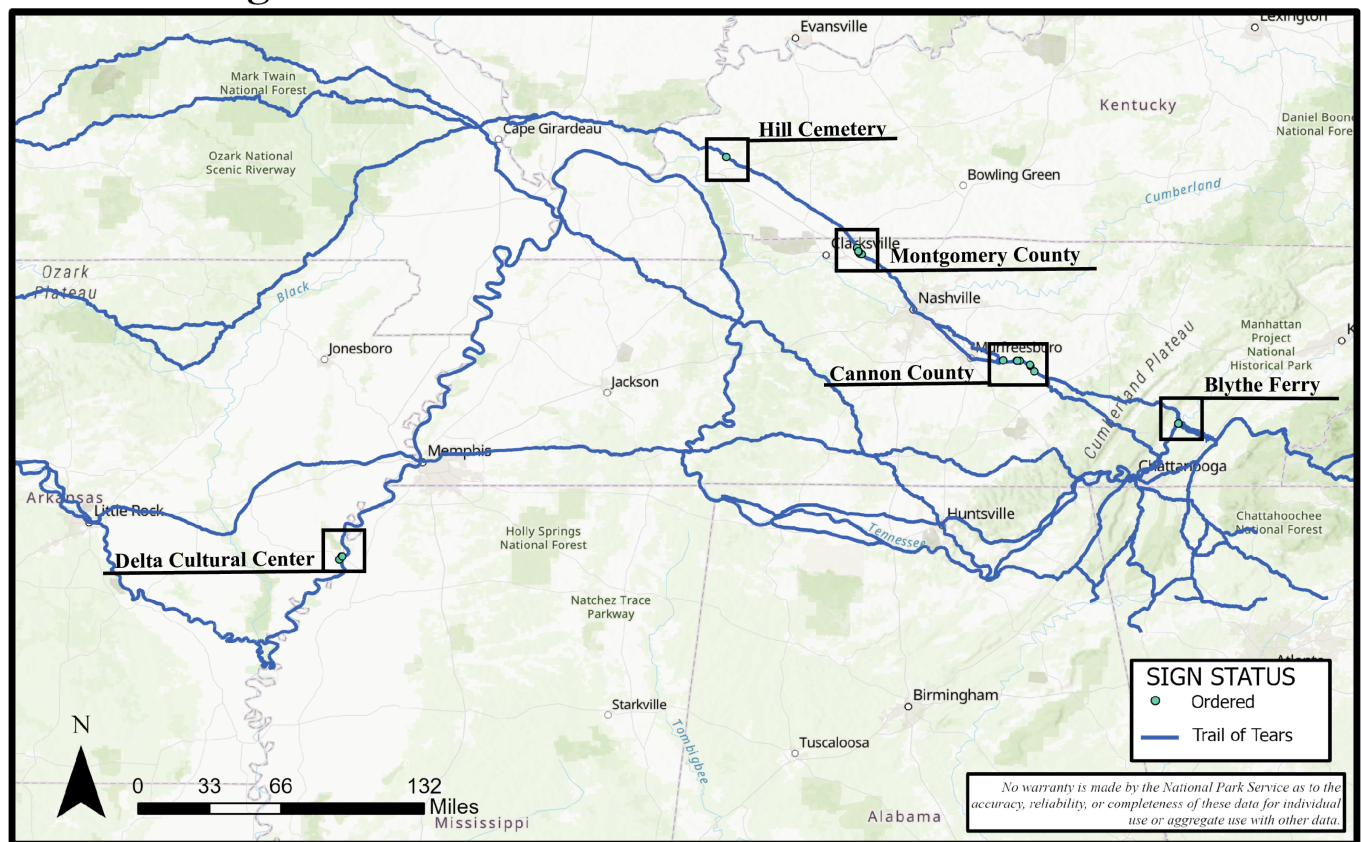
Completed and ordered sign plans in FY21:

- We have successfully ordered 6 separate sign plans along the Trail of Tears. These plans are within Tennessee, Kentucky, Georgia, and Arkansas.
- A notable highlight is that we were able to coordinate with Port Royal National Historic Park in Montgomery Tennessee to order and install road and pedestrian signs. These signs were installed within Montgomery Tennessee and Port Royal National Historic State Park.
- There was a lot of collaboration with this signing effort along the Trail of Tears, and we are grateful for all the support from each of the partners for making these sign plans come to fruition.
- Looking forward to the next fiscal year we are going to hit the ground running and complete a signing effort in Shelby County, Tennessee (Memphis).

 **Alabama, Arkansas, Georgia, Mississippi, Missouri, Oklahoma, Tennessee Trail of Tears**  **National Park Service U.S. Department of the Interior**

Ordered Signs in 2021

Produced By National Trails Intermountain Region



Esri, HERE, Garmin, FAO, NOAA, USGS, EPA, NPS, Esri, USGS

9 September 2021

NPS Image

Blank.

Virtual Trail Stories & Experiences

Have you been following the trails on social media? You may have noticed an increase in articles, virtual visits, and virtual kids' activities. People can't travel to experience the trails in person, so the national trails' staff has been working to bring the trails to your house. You can check out recent and past articles, become a junior ranger, take virtual visits to learn more about trail sites, and more - click the links below!

Highlights

Showing results 1-4 of 4

TRAIL OF TEARS NATIONAL HISTORIC TRAIL

Trail of Tears: Trail Transformation

<https://www.nps.gov/articles/000/trail-of-tears-trail-transformation.htm>

Type: Article



<https://www.nps.gov/articles/000/trail-of-tears-trail-transformation.htm>

Check out the newly constructed trail at Blythe Ferry on the Trail of Tears NHT! The trail begins at the Cherokee Removal Memorial Park and leads to the historic Blythe Ferry landing site. This was the last time many of the Cherokee would be in their native lands as they were forced west. Once the Cherokee crossed the river they were no longer on their native land. The trail is approx. 1/4 mile long and of natural surface. Thank you to our partners for making this happen!

TRAIL OF TEARS NATIONAL HISTORIC TRAIL

Rivers, Rails & Roads: Transportation During the Cherokee Removal 1837 - 1839


<https://www.nps.gov/articles/000/rivers-rails-roads-transportation-during-the-choerokee-removal-1837-1839.htm>

Type: Article



<https://www.nps.gov/articles/000/rivers-rails-roads-transportation-during-the-choerokee-removal-1837-1839.htm>

The Trail of Tears involved mile after mile of hard travel through miserable conditions. Yet detachments bound for Indian Territory did more than just walk. Although time-honored methods like wagons, keelboats, flatboats, and ferries

 played major roles, some of the technology used to transport Cherokees on the Trail of Tears was actually quite new.

TRAIL OF TEARS NATIONAL HISTORIC TRAIL

Hike on the Trail of Tears

<https://www.nps.gov/thingstodo/hike-on-the-trail-of-tears.htm>

Type: Things To Do

Subtype: Hiking

Reservations: No

Pets: Yes



<https://www.nps.gov/thingstodo/hike-on-the-trail-of-tears.htm>

The trail commemorates the forced removal of Cherokee from their homelands; the paths that 17 Cherokee detachments followed westward; and the revival of the Cherokee Nation. We encourage you to retrace the trail on foot—to sacred sites that tell the story of suffering and intolerance, but just as important, one of survival. There are a variety of hiking opportunities across the full length of the trail, but we've selected a few places for you to experience.

Become a Trail of Tears Junior Ranger

<https://www.nps.gov/thingstodo/become-a-trail-of-tears-junior-ranger.htm>

Type: Things To Do

Subtype: Junior Ranger Program

Sites: National Trails Office - Regions 6, 7, 8, Trail Of Tears National Historic Trail

Reservations: No

Pets: Yes

Location: Virtually or at a trail site



<https://www.nps.gov/thingstodo/become-a-trail-of-tears-junior-ranger.htm>

Learn about the Trail of Tears National Historic Trail and earn your junior ranger badge! This activity can be completed virtually or after visiting a site along the Trail of Tears National Historic Trail. Booklets can be submitted either electronically or by mail. Take a look and start exploring the trail today!