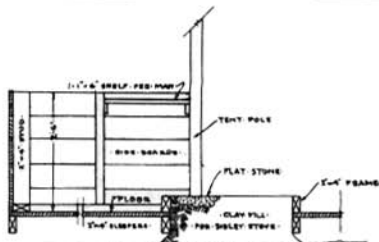


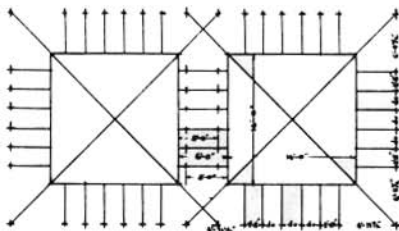
1/2" SCALE CLOTHES RACK DETAIL
MAY BE BUILT OF PIPE OR WOOD



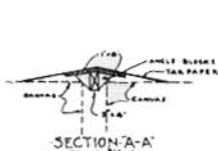
1/2" SCALE SECTION 'A-A'

NOTES:

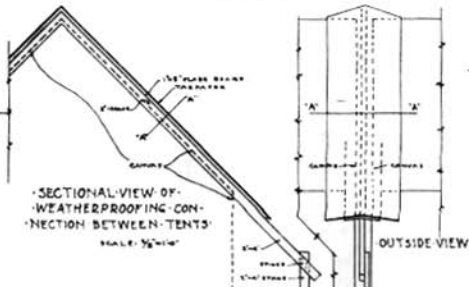
- 1. TENT FLOPS AND SIDES AS SHOWN FOR WOODEN QUARTERS.
- 2. CANOPY FOR HORSEBACK WEATHER STOPS MAY BE OMITTED.
- 3. IF SAND IS FOR INSIDE WEATHER STOP, FOUNDATION FOR STOPS MAY BE OMITTED. SLEEPERS SHOULD BE EQUALIZED AND PLACED SOLID.



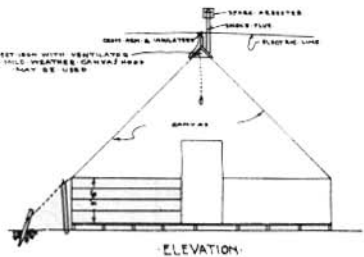
PLAN OF STAKING FOR PYRAMIDAL TENTS
SCALE: 1/8"=1'-0"



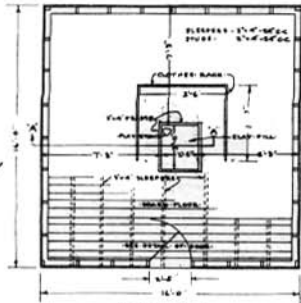
SECTION 'A-A'
SCALE: 1/2"=1'-0"



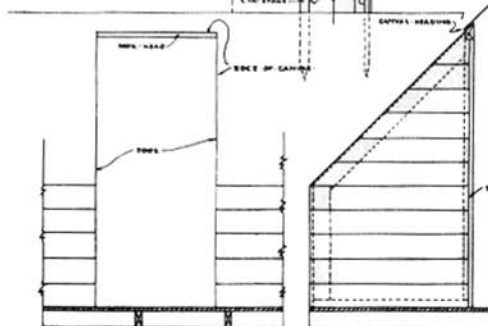
SECTIONAL VIEW OF WEATHERPROOFING CONNECTION BETWEEN TENTS
SCALE: 1/2"=1'-0"



ELEVATION
SCALE: 1/2"=1'-0"

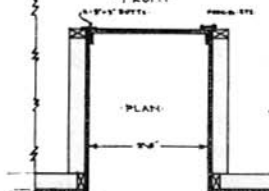


TENT PLAN
1/2" SCALE
16'-0" PYRAMIDAL



FRONT

SIDE



1/2" SCALE DOOR DETAILS
SLEEPER DOOR OR SOLID DOOR AS SHOWN

APPROVED: _____

APPROVED: _____

DETAILS OF PYRAMIDAL TENT

EMERGENCY CONSERVATION WORK
ESSENTIAL FACILITY PROJECTS
LABOR CAMPS
FOR RECREATION PROJECTS
PREPARED BY
U. S. DEPARTMENT OF AGRICULTURE
FOREST SERVICE
ROBERT V. FISHER CHIEF FORESTER

DATE
4-10-33

DESIGNED BY
ROBERT V. FISHER

DRAWN BY
ROBERT V. FISHER

CHECKED BY
ROBERT V. FISHER

INSP. NO.
5