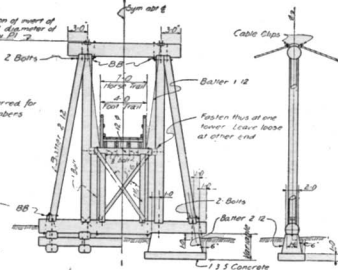


Set elevation of rivet of saddle at 1 diameter of cable below BB

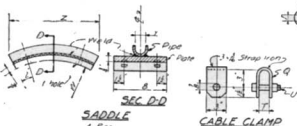


TYPICAL TOWER

Center is preferred for all round timbers

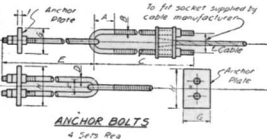


HANGER

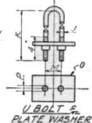


SADDLE
4 Req

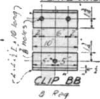
CABLE CLAMP



ANCHOR BOLTS
4 Sets Req



U-BOLT & PLATE WASHER



CLIP BB
8 Req

ITEM	MARK	7x7 Bridge Cable											
Kind of Cable		Simpson-Monro						7x7 Bridge Cable					
Diameter of Cable		3"	4"	5"	6"	7"	8"	9"	10"	11"	12"	13"	14"
Cable Loading	A	60-80	81-100	112-150	150-180	181-210	211-240	241-270	271-300	301-330	331-360	361-390	391-420
	B	-	-	60-90	91-108	109-60	161-210	220-240	241-260	261-280	281-300	301-320	321-340
	C	-	-	50-60	61-69	70-80	81-89	90-100	101-110	111-120	121-130	131-140	141-150
	D	-	-	55-75	76-110	111-140	141-160	161-180	181-200	201-220	221-240	241-260	261-280
Tower	Cap	22 1/2	24 1/2	24 1/2	24 1/2	24 1/2	26 1/2	26 1/2	26 1/2	26 1/2	26 1/2	26 1/2	26 1/2
	Leg	4 1/2	5 1/2	6 1/2	6 1/2	6 1/2	6 1/2	6 1/2	6 1/2	6 1/2	6 1/2	6 1/2	6 1/2
	Brace	12 1/2	12 1/2	12 1/2	12 1/2	12 1/2	12 1/2	12 1/2	12 1/2	12 1/2	12 1/2	12 1/2	12 1/2
U Bolt for Bridge Sector	B-C	4	4	4	4	5	6	6	6	7	7	7	7
	D-E	1 1/2	1 1/2	1 1/2	1 1/2	1 1/2	1 1/2	1 1/2	1 1/2	1 1/2	1 1/2	1 1/2	1 1/2
	F	2	2	2	2	2	2	2	2	2	2	2	2
	G	1 1/2	1 1/2	1 1/2	1 1/2	1 1/2	1 1/2	1 1/2	1 1/2	1 1/2	1 1/2	1 1/2	1 1/2
U Bolt in Anchor Block	J-K	1 1/2	1 1/2	1 1/2	1 1/2	1 1/2	1 1/2	1 1/2	1 1/2	1 1/2	1 1/2	1 1/2	1 1/2
	L	1 1/2	1 1/2	1 1/2	1 1/2	1 1/2	1 1/2	1 1/2	1 1/2	1 1/2	1 1/2	1 1/2	1 1/2
	M	1 1/2	1 1/2	1 1/2	1 1/2	1 1/2	1 1/2	1 1/2	1 1/2	1 1/2	1 1/2	1 1/2	1 1/2
	N	1 1/2	1 1/2	1 1/2	1 1/2	1 1/2	1 1/2	1 1/2	1 1/2	1 1/2	1 1/2	1 1/2	1 1/2
U-Bolt in Anchor Blocks	J-K	1 1/2	1 1/2	1 1/2	1 1/2	1 1/2	1 1/2	1 1/2	1 1/2	1 1/2	1 1/2	1 1/2	1 1/2
	L	1 1/2	1 1/2	1 1/2	1 1/2	1 1/2	1 1/2	1 1/2	1 1/2	1 1/2	1 1/2	1 1/2	1 1/2
	M	1 1/2	1 1/2	1 1/2	1 1/2	1 1/2	1 1/2	1 1/2	1 1/2	1 1/2	1 1/2	1 1/2	1 1/2
	N	1 1/2	1 1/2	1 1/2	1 1/2	1 1/2	1 1/2	1 1/2	1 1/2	1 1/2	1 1/2	1 1/2	1 1/2
Cable Clamp	U	3	3	3	3	3	3	3	3	3	3	3	3
	V	3	3	3	3	3	3	3	3	3	3	3	3
	W	1-0	1-0	1-0	1-0	1-2	1-4	1-5	1-6	1-8	1-8	1-8	1-8
	X	1-2	1-2	1-2	1-2	1-2	1-2	1-2	1-2	1-2	1-2	1-2	1-2
Saddle	Y	3	3	3	3	3	3	3	3	3	3	3	3
	Z	3	3	3	3	3	3	3	3	3	3	3	3
	AA	3	3	3	3	3	3	3	3	3	3	3	3
	AB	3	3	3	3	3	3	3	3	3	3	3	3
Anchor Block	Height	3-0	3-0	4-0	4-0	5-0	5-0	5-0	5-0	5-0	5-0	5-0	5-0
	Width	4-0	4-6	4-6	5-0	5-0	6-0	6-0	6-0	6-0	6-0	6-0	6-0
	Length	5-0	6-0	5-0	6-0	6-0	7-0	8-0	9-0	9-0	9-0	9-0	9-0
	Clip	BB	1	1	1	1	1	1	1	1	1	1	1

LIVE LOADS		
Bridge	Feet of Snow	Area in Sq Ft of Bridge
A	1	50
B	5	150
C	10	300
A	1	160
B	5	300
C	10	600

FIG 42

SHEET 2 OF 2 SHEETS

U.S. DEPARTMENT OF AGRICULTURE
FOREST SERVICE
REGION - 6

SUSPENSION BRIDGES

FOOT AND HORSE TRAIL
60 FT TO 400 FT SPAN

MARCH 1935