



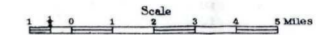
U.S. DEPARTMENT OF AGRICULTURE
FOREST SERVICE
EARLE H. CLAPP, ACTING CHIEF
T. W. HODGSON, CHIEF, DIVISION OF ENGINEERING

SAN JUAN NATIONAL FOREST

COLORADO

NEW MEXICO PRINCIPAL MERIDIAN

1942

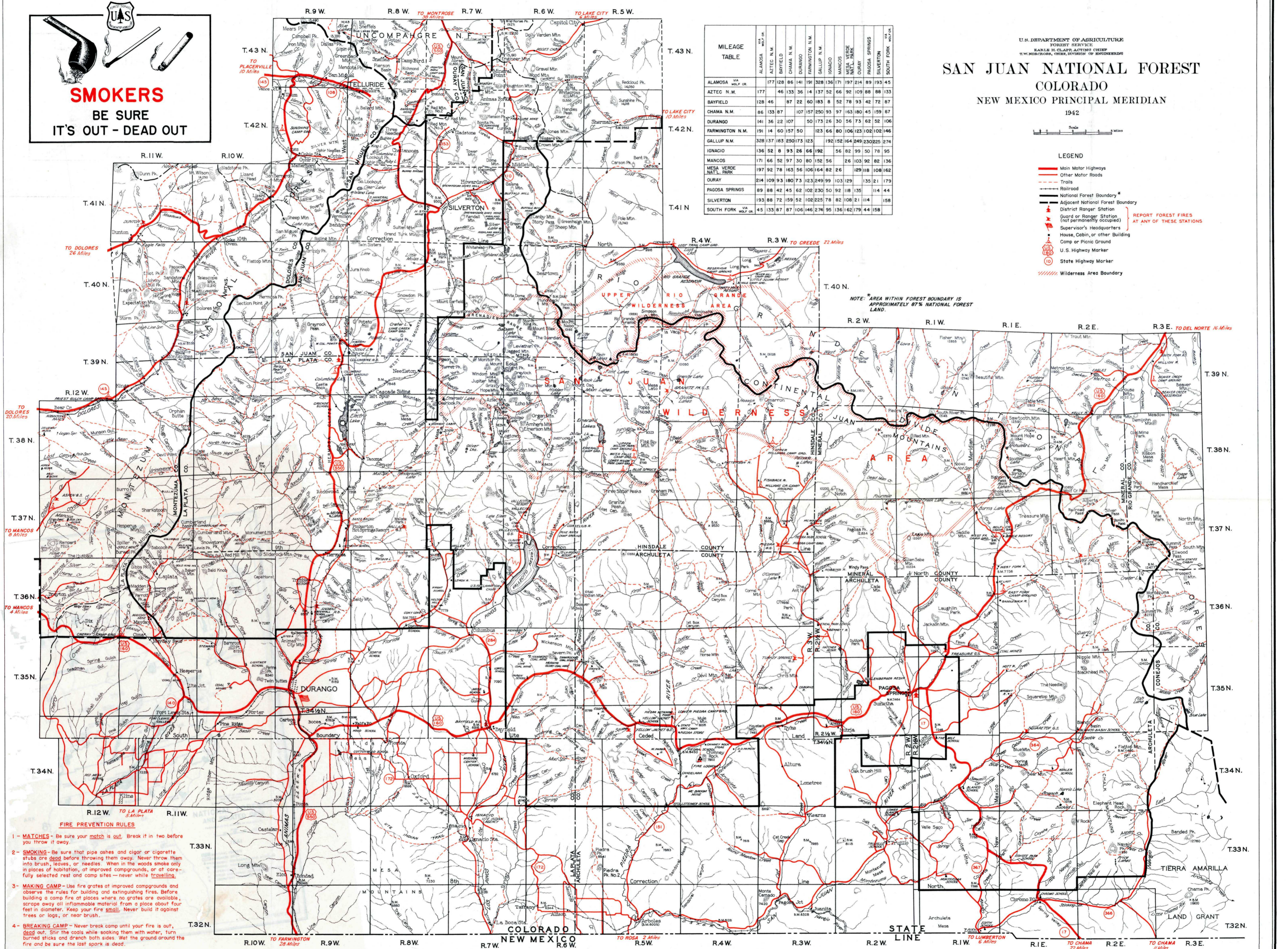


MILEAGE TABLE	ALAMOSA	AZTEC N.M.	BAYFIELD	CHAMA N.M.	DURANGO	FARMINGTON N.M.	GALLUP N.M.	IGNACIO	MANCOS	MESA VERDE NAT'L PARK	PAGOSA SPRINGS	SILVERTON	SOUTH FORK
ALAMOSA	177	128	86	141	191	328	136	171	197	214	89	193	45
AZTEC N.M.	46	133	36	14	137	52	66	92	109	88	88	133	
BAYFIELD	87	22	60	183	8	52	78	93	42	72	87		
CHAMA N.M.	107	157	250	93	97	163	180	45	159	87			
DURANGO	26	22	107	50	173	26	30	56	73	62	52	106	
FARMINGTON N.M.	60	157	50	123	66	80	106	123	102	102	146		
GALLUP N.M.	137	183	250	173	123	192	152	164	249	230	225	274	
IGNACIO	52	8	93	26	66	192	56	82	99	50	78	95	
MANCOS	66	52	97	30	80	158	56	26	103	92	82	136	
MESA VERDE NAT'L PARK	92	78	163	56	106	164	82	26	129	118	108	162	
PAGOSA SPRINGS	109	93	180	73	123	249	99	103	129	135	21	179	
SILVERTON	88	42	45	62	102	230	50	92	118	135	114	44	
SOUTH FORK	88	72	159	52	102	225	78	82	108	21	114	58	

LEGEND

- Main Motor Highways
 - Other Motor Roads
 - Trails
 - Railroad
 - National Forest Boundary
 - Adjacent National Forest Boundary
 - District Ranger Station
 - Guard or Ranger Station (not permanently occupied)
 - Supervisor's Headquarters
 - House, Cabin, or other Building
 - Camp or Picnic Ground
 - U. S. Highway Marker
 - State Highway Marker
 - Wilderness Area Boundary
- REPORT FOREST FIRES AT ANY OF THESE STATIONS**

NOTE: AREA WITHIN FOREST BOUNDARY IS APPROXIMATELY 87% NATIONAL FOREST LAND.



- FIRE PREVENTION RULES**
- 1 - **MATCHES** - Be sure your match is out. Break it in two before you throw it away.
 - 2 - **SMOKING** - Be sure that pipe ashes and cigar or cigarette stubs are dead before throwing them away. Never throw them into brush, leaves, or needles. When in the woods smoke only in places of habitation, at improved campgrounds, or at carefully selected rest and camp sites - never while travelling.
 - 3 - **MAKING CAMP** - Use fire grates at improved campgrounds and observe the rules for building and extinguishing fires. Before building a camp fire at places where no grates are available, scrape away all inflammable material from a place about four feet in diameter. Keep your fire small. Never build it against trees or logs, or near brush.
 - 4 - **BREAKING CAMP** - Never break camp until your fire is out, dead out. Stir the coals while soaking them with water, turn burned sticks and drench both sides. Wet the ground around the fire and be sure the last spark is dead.
 - 5 - **BONFIRES** - Never build bonfires or burn slash or brush in windy weather or while there is the slightest danger that the fire will get away.

— PUT OUT YOUR CAMP FIRE —

Prepared at District Office Denver by
Frank Clark - Checked by S. H. Heston