

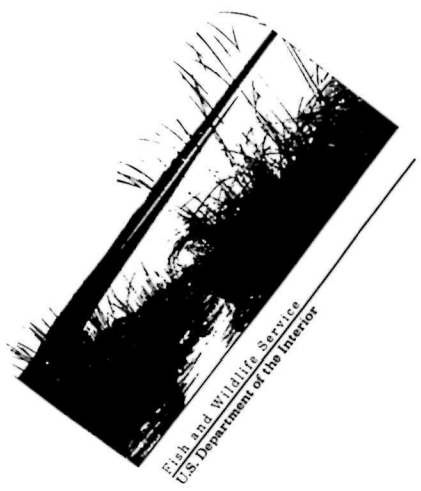
U.S. Fish and Wildlife Service



PUBLICATIONS UNIT

Midwestern Report 140 (18)  
December 1990

**Federal Coastal Wetland Mapping  
Programs**



Fish and Wildlife Service  
U.S. Department of the Interior

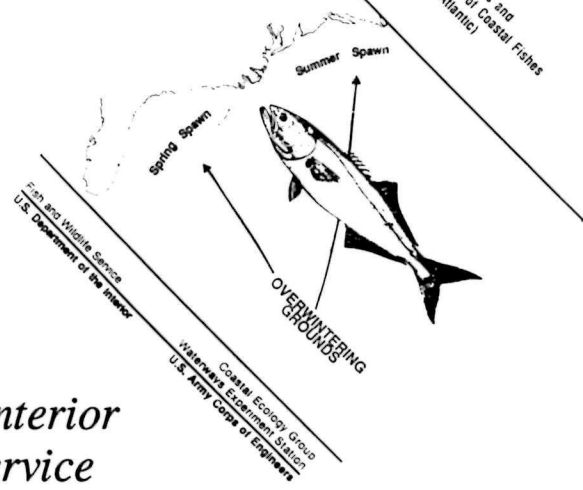
March 1993

**PUBLICATIONS LIST**

Species Profiles 401 (18)  
June 1990

Species Profiles: Life Histories and  
Environmental Requirements of Coastal Fishes  
and Invertebrates (South Atlantic)

**BLUEFISH**



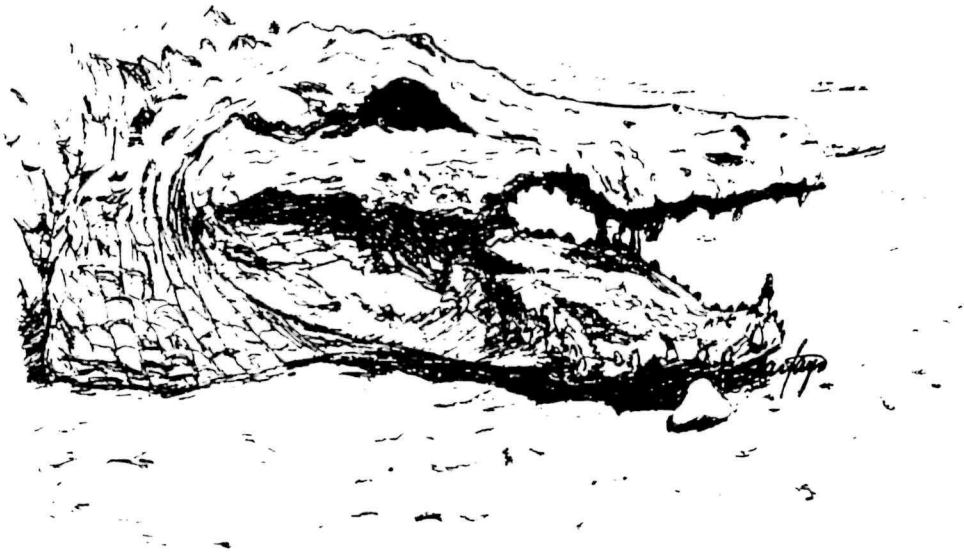
Fish and Wildlife Service  
U.S. Department of the Interior

Coastal Ecology Group  
Waterways Experiment Station  
U.S. Army Corps of Engineers

*Department of the Interior  
Fish and Wildlife Service  
Publications Unit  
Mail Stop: 130 Webb Building  
4401 North Fairfax Drive  
Arlington, Virginia 22203  
(703) 358-1711; FAX (703) 358-2283*

## FOREWORD

The Publications Unit (Unit) of the Fish and Wildlife Service is the primary source of information for technical and scientific publications. It has a two fold mission: To store and respond to requests for individual Service publications, and to answer general queries about the Service and the resources which are it's charge. This publication list is intended for all Service offices, field stations and the general public to inform them of the material available for their use.



## INTRODUCTION

This list consist of 10 different technical series and general interest information.

Some of the reports with entries such as "FWS/OBS" was the initiated in 1976 by the Office of Biological Services. The series is now known as "Biological Report". Major subseries names, e.g., the Habitat Suitability Index Models and Contaminant Hazard Reviews, have also been listed.

The publications listed are available from the Publications Unit free of charge. When ordering please state the publications number in order that we may process your order expeditiously.

Due to large volume of requests that we receive, some of the information listed may quickly become obsolete. If we do not have the documents(s) requested, we will try to provide an alternate source, if one is available. They are also be available from any of the regional Government Printing Office (GPO) bookstores. Costs will vary, but are generally less than for the same publication from the National Technical Information Service (NTIS). Photocopies of the majority of reports in the technical series are available from the NTIS. Costs varies according to the length of the document.

Superintendent of Documents  
Government Printing Office  
Washington, DC 20420  
(202) 783-3238

or

National Technical Information Service  
U.S. Department of Commerce  
5285 Port Royal Road  
Springfield, VA 22161  
(703) 487-4650 (order with stock number)  
(703) 487-4780 (assistance)

## CONTENTS

Foreword.....	ii	
Introduction.....	iii	
Biological Reports.....	01	- 19
Habitat Suitability Index Models.....	01	- 05
Species Profiles.....	05	- 09
Contaminant Hazards Reviews.....	11	- 12
Fish and Wildlife Leaflets.....	20	- 22
Fish and Wildlife Research.....	23	
Fish and Wildlife Technical Reports.....	24	- 26
Fish Disease Leaflets.....	27	
Fish Health Bulletins.....	28	
Investigations in Fish Control.....	29	
North American Fauna.....	30	
Resource Publications.....	31	- 33
Wildlife Research Reports.....	34	
General Interest.....	35	- 40
Biologue Series.....	39	- 40



## BIOLOGICAL REPORTS

- 79/31      Classifications of Wetlands in Deep Water Habitat of the United States (December 1979) {Lewis Cowardin, Virginia Carter, Frances Golet, and Edward LaRue} p.131
- 80/40.27      Liming & Fisheries Management Guidelines for Acidified Lakes in the Adirondack Region (July 1989) {Steven Gloss and Carl Schofield} p. 59
- 80/40.28      Acid Rain Publications by the U.S. Fish and Wildlife Service, 1979-1989 (August 1989) {Rita Villella} p.28
- FWS/OBS  
81/03      Willa Bay: A Historical Prospective and a Rationale for Research (April 1981) {Joel Hedgepeth, Steven Obreski} p.52
- FWS/OBS  
81/24      The Ecology of the Mangroves of South Florida: A Community Profile (January 1982) {William Odum} p.144
- FWS/OBS  
81/10.3A      A Low Effort System for Planned Coolwater and Coldwater Reservoirs (revised) (November 1984) {William McConnell} p.62
- FWS/OBS  
82/10.7      Habitat Suitability Index Models: White Crappie (February 1982) {Elizabeth Edwards, Douglas Krieger, Glen Gebhart, and O. Eugene Maughan} p.22
- FWS/OBS  
82/10.17      Habitat Suitability Index Models: Northern Pike (July 1982) {Peter Inskip} p.40
- FWS/OBS  
82/10.28      Habitat Suitability Index Models: Fox Squirrel (July 1982) {Arthur Allen} p.11
- FWS/OBS  
82/10.30      Habitat Suitability Index Models: Beaver (April 1983) {Arthur Allen} p.20
- FWS/OBS  
82/10.32      Habitat Suitability Index Models: Lewis' Woodpecker (April 1982) {Patrick Sousa} p.14
- FWS/OBS  
82/10.33      Habitat Suitability Index Models: Longnose Dace (April 1983) {Elizabeth Edwards, Hiram Li, and Carl B. Schreck} p.13
- FWS/OBS  
82/10.34      Habitat Suitability Index Models: Bigmouth Buffalo (September 1983) {Elizabeth Edwards} p.23
- FWS/OBS  
82/10.35      Habitat Suitability Index Models: Longnose Sucker (September 1983) {Elizabeth Edwards} p.23
- FWS/OBS  
82/10.37      Habitat Suitability Index Models: Black-Crapped Chickadee (September 1983) {Richard Schroeder} p.12

BIOLOGICAL REPORTS CONT.

FWS/OBS      Habitat Suitability Index Models: Downy Woodpecker  
82/10.38      (April 1983) {Richard Schroeder} p.10

FWS/OBS      Habitat Suitability Index Models: Wood Duck  
82/10.43      (July 1983) {Patrick Sousa and Adrian Farmer} p.27

FWS/OBS      Habitat Suitability Index Models: Baird's Sparrow  
82/10.44      (August 1983) {Patrick Sousa and Neil McDonell} p.27

FWS/OBS      Habitat Suitability Index Models: Williamson's Sapsucker  
82/10.47      (September 1983) {Patrick Sousa} p.13

FWS/OBS      Habitat Suitability Index Models: Fallfish  
82/10.48      (September 1983) {Joan Trail and Patrick Nelson} p.13

FWS/OBS      Habitat Suitability Index Models: Coho Salmon  
82/10.49      (September 1983) {Thomas MaMahon} p.15

FWS/OBS      Habitat Suitability Index Models: Roseate Spoonbill  
82/10.50      (September 1983) {James Lewis} p.15

FWS/OBS      Habitat Suitability Index Models: Redhead (Wintering)  
82/10.53      (April 1984) {Rebecca Howard and Harold Kantrud} p.14

FWS/OBS      Habitat Suitability Index Models: Walleye  
82/10.56      (April 1984) {Thomas McMahon and Patrick Nelson} p.43

FWS/OBS      Habitat Suitability Index Models: Rainbow Trout  
82/10.60      (January 1984) {Robert Raleigh, Terry Hickman, R.  
Charles Solomon and Patrick Nelson} p.63

FWS/OBS      Habitat Suitability Index Models: Field Sparrow  
82/10.62      (December 1984) {Patrick Sousa} p.14

FWS/OBS      Habitat Suitability Index Models: Pronghorn  
82/10.65      (June 1984) {Arthur Allen, John Cook, and  
Michael Ambruster} p.21

FWS/OBS      Habitat Suitability Index Models: Eastern Cottontail  
82/10.66      (July 1984) {Arthur Allen} p.23

FWS/OBS      Habitat Suitability Index Models: Western Grebe  
82/10.69      (September 1984) {Henry Short} p.20

FWS/OBS      Habitat Suitability Index Models: The Arizona Guild  
82/10.70      and Layers of Habitat Models (September 1984) {Henry  
Short} p.37

FWS/OBS      Habitat Suitability Index Models: Gray Partridge  
82/10.73      (December 1984) {Arthur Allen} p.23

BIOLOGICAL REPORTS CONT.

FWS/OBS      Habitat Suitability Index Models: Larval & Juvenile Red  
82/10.74      Red Drum (September 1984) {Jack Buckley} p.15

FWS/OBS      Habitat Suitability Index Models: Spotted Seatrout  
82/10.75      (September 1984) {Paul Kosteck} p.22

FWS/OBS      Habitat Suitability Index Models: Pink Shrimp  
82/10.76      (August 1984) {Rosemarie Mulholland} p.17

FWS/OBS      Habitat Suitability Index Models: Hard Clam  
82/10.77      (July 1984) {Rosemarie Mulholland} p.21

FWS/OBS      Habitat Suitability Index Models: Brewer's Sparrow  
82/10.83      (September 1984) {Henry Short} p.16

FWS/OBS      Habitat Suitability Index and Instream Flow  
82/10.85      Suitability Curves: Inland Stocks of Striped Bass  
                 (August 1984) {Johnie Crance} p.61

82/10.86      Habitat Suitability Index Models: Ruffed Grouse  
                 (April 1984) {Brian Cade and Patrick Sousa} p.31

82/10.87      Habitat Suitability Index Models: Belted Kingfisher  
                 (August 1985) {Bart Proze} p.22

82/10.95      Habitat Suitability Index Models: Redwinged Blackbird  
                 (May 1985) {Henry Short} p.20

82/10.98      Habitat Suitability Index Models: Juvenile Atlantic  
                 Croaker (revised) (June 1985) {Robert Diaz and Christopher  
                 Onuf} p.23

82/10.99      Habitat Suitability Index Models: Great Blue Heron  
                 (July 1985) {Henry Short and Robert Cooper} p.23

82/10.101      Habitat Suitability Index Models: Snowshoe Hare  
                 (July 1985) {Raymond Carreker} p.21

82/10.102      Habitat Suitability Index Models: Greater Prairie Chicken  
                 (July 1985) {Bart Prozen} p.33]

82/10.105      Habitat Suitability Index Models: American Woodcock  
                 (July 1985) {Brian Cade} p.223

82/10.106      Habitat Suitability Index Models: Eastern Wild Turkey  
                 (July 1985) {Richard Schroeder} p.33

82/10.107      Habitat Suitability Index Models: Swamp Rabbit  
                 (August 1985) {Arthur Allen} p.20

BIOLOGICAL REPORTS CONT.

- 82/10.111 Habitat Suitability Index Models: Red Spotted Newt  
(August 1985) {Patrick Sousa} p.18
- 82/10.112 Habitat Suitability Index Models: Gizzard Shad  
(September 1985) {Kathryn Williamson and Patrick Sousa} p.33
- 82/10.113 Habitat Suitability Index Models: Spotted Owl  
(September 1985) {Stephen A. Layman, Hal Salwasser  
and Reginald Barrett} p.27
- 82/10.144 Habitat Suitability Index Models: Blue-Winged Teal  
(September 1985) {Patrick Sousa} p.36
- 82/10.117 Habitat Suitability Index Models: Lesser Scaup (Breeding)  
(May 1986) {Arthur Allen} p.16
- 82/10.120 Habitat Suitability Index Models: Inland Silverside  
(July 1986) {Michael Weinstein} p.25
- 82/10.123 Habitat Suitability Index Models: White-Tailed Deer  
in the Gulf of Mexico & South Atlantic Coastal Plains  
(September 1986) {Henry Short} p.36
- 82/10.124 Habitat Suitability Index Models and Instream Flow  
Suitability Curves: Brown Trout (September 1986)  
{Robert Raleigh, Laurence Zuckerman and Patrick Nelson} p.65
- 82/10.125 Habitat Suitability Index Models: Slider Turtle  
(September 1986) {Stephen Morreale and J. Whitfield  
Gibson} p.14
- 82/10.126 Habitat Suitability Index Models: Bald Eagle (Breeding Season)  
(October 1986) {Allen Schroeder} p.25
- 82/10.128 Habitat Suitability Index Models: Wildlife Species Richness  
in Shelterbelts (November 1986) {Richard Schroeder} p.17
- 82/10.129 Habitat Suitability Index Models: Sturgeon  
(November 1986) {Johnie Crance} p.31
- 82/10.130 Habitat Suitability Index Models: Black-Shouldered Kite  
(January 1987) {Craig Faanes and Rebecca Howard} p.13
- 82/10.132 Habitat Suitability Index Models: Mallard  
(Wintering Habitat, Lower Mississippi Valley)  
(February 1987) {Arthur Allen} p.37
- 82/10.133 Habitat Suitability Index Models: Juvenile English Sole  
(February 1987) {Christopher Toole, Roger Barnhart,  
and Christopher Onuf} p.27

BIOLOGICAL REPORTS CONT.

- 82/10.134 Guidelines for Using the Delphi Technique to Develop Habitat Suitability Index Curves (April 1987) {Johnnie Crance} p.21
- 82/10.143 Habitat Suitability Index Models: Barred Owl (September 1987) {Arthur Allen} p.17
- 82/10.144 Habitat Suitability Index Models: Black Bear, Upper Great Lakes Region (September 1987) {Lyn Rogers and Arthur Allen} p.54
- 82/10.145 Habitat Suitability Index Models: Northern Pintail (September 1987) {Willie Saucy and Stephen Anderson} p.23
- 82/10.146 Habitat Suitability Index Models: Hairy Woodpecker (September 1987) {Patrick Sousa} p.18
- 82/10.147 Habitat Suitability Index Models: Bobcat (September 1987) {Katherine Boyle and Timothy Fendley} p.16
- 82/10.148 Habitat Suitability Index Models: Muskellunge (September 1987) {Mark Cook and R. Charles Solomon} p.33
- 82/10.151 Habitat Suitability Index Models: Diamondback Terrapin, Atlantic Coast (March 1988) {William Palmer and Carroll Cordes} p.18
- 82/10.154 Habitat Suitability Index Models: Osprey (September 1988) {Sandra Vana-Miller} p.46
- 82/10.155 Habitat Suitability Index Models: Moose, Lake Superior Region (September 1987) {Arthur Allen, Peter Jordan, and James Terrell} p.47
- 82/10.156 Habitat Suitability Index Models: Black-Tailed Prairie Dog (July 1989) {Norman Clippinger} p.21
- 82/11.81 Species Profiles: Life Histories and Environmental Requirements of Coastal Fishes and Invertebrates (Pacific Northwest) CHUM SALMON (March 1988) {Gilbert Pauley, Karen Bowers, and Gary Thomas} p.17
- 82/11.83 Species Profiles: Life Histories and Environmental Requirements of Coastal Fishes and Invertebrates (Gulf of Mexico) RED SNAPPER (August 1988) {David Moran} p.19
- 82/11.90 Species Profiles: Life Histories and Environmental Requirements of Coastal Fishes and Invertebrates (South Atlantic) BROWN SHRIMP (June 1989) {S.C. Larson, M.J. Van Den Avyle, and E.L. Bozeman} p.14

BIOLOGICAL REPORTS CONT.

- 82/11.91 Species Profiles: Life Histories and Environmental Requirements of Coastal Fishes and Invertebrates (South Atlantic) SPOT (January 1989) {L.S. Hales and M.J. Van Den Avyle} p.24
- 82/11.92 Species Profiles: Life Histories and Environmental Requirements of Coastal Fishes and Invertebrates (Pacific Southwest) AMPHIPODS (January 1989) {Daniel Grosse and Gilbert Pauley} p.17
- 82/11.93 Species Profiles: Life Histories and Environmental Requirements of Coastal Fishes and Invertebrates (Pacific Northwest) GHOST SHRIMP AND BLUE MUD SHRIMP (January 1989) {Suzanne Horning} p.14
- 82/11.95 Species Profiles: Life Histories and Environmental Requirements of Coastal Fishes and Invertebrates (Pacific Northwest) PISMO CLAMS (February 1989) {William Shaw and Thomas Hessler} p.12
- 82/11.96 Species Profile: Life Histories and Environmental Requirements of Coastal Fishes and Invertebrates (South Atlantic) BLUE FISH (March 1988) {J. Douglas Olive} p.13
- 82/11.97 Species Profile: Life Histories and Environmental Requirements of Coastal Fishes and Invertebrates (Mid-Atlantic) BAY ANCHOVY (February 1989) {Timothy Morton} p.13
- 82/11.98 Species Profiles: Life Histories and Environmental Requirements and Coastal Fishes and Invertebrates (Mid-Atlantic) SPOT (February 1989) {J.M. Phillips, J.H. Kerby, M.T. Huisch, and D.P. Moran} p.13
- 82/11.99 Species Profiles: Life Histories and Environmental Requirements and Coastal Fishes and Invertebrates (South Atlantic) BLACK SEA BASS (July 1989) {Linda Mercer} p.16
- 82/11.100 Species Profiles: Life Histories and Environmental Requirements and Coastal Fishes and Invertebrates (Mid-Atlantic) BLUE CRAB (March 1989) {Dean Fowler, J. Hill, and Michael Van Avyle} p.18
- 82/11.101 Species Profiles: Life Histories and Environmental Requirements and Coastal Fishes and Invertebrates (Pacific Northwest) ENGLISH SOLE (July 1989) {Dennis Lassuy} p.17

BIOLOGICAL REPORTS CONT.

- 82/11.102 Species Profiles: Life Histories and Environmental Requirements and Coastal Fishes and Invertebrates (North and Mid-Atlantic) BLUE MUSSEL (June 1989) {Roger Newell} p.25
- 82/11.103 Species Profiles: Life Histories and Environmental Requirements and Coastal Fishes and Invertebrates (Pacific Southwest) PILE PERCH, STRIPED SEAPERCH, AND RUBBERLIP SEAPERCH (July 1989) {Ronald Fitzsche, Thomas Hassler} p.15
- 82/11.104 Species Profiles: Life Histories and Environmental Requirements and Coastal Fishes and Invertebrates (South Florida) LADYFISH AND TARPON (July 1989) {Alexander Zale and Susan Merrifield} p.17
- 82/11.105 Species Profiles: Life Histories and Environmental Requirements and Coastal Fishes and Invertebrates (North and Mid-Atlantic) TAUTOG AND CUNNER (August 1989) {Peter Auster} p.11
- 82/11.106 Species Profiles: Life Histories and Environmental Requirements and Coastal Fishes and Invertebrates (North Atlantic) RAINBOW SMELT (August 1989) {Jack Buckley} p.11
- 82/11.107 Species Profiles: Life Histories and Environmental Requirements and Coastal Fishes and Invertebrates (Pacific Southwest) PACIFIC AND SPECKLED SANDDABS (June 1989) {Joseph Rackowski and Ellen Pikitch} p.18
- 82/11.108 Species Profiles: Life Histories and Environmental Requirements and Coastal Fishes and Invertebrates (Mid-Atlantic) ATLANTIC MENHADEN (June 1989) {S. Gordon and Michael Van Avyle} p.23
- 82/11.109 Species Profiles: Life Histories and Environmental Requirements and Coastal Fishes and Invertebrates (Mid-Atlantic) WEAK FISH (August 1989) {Linda Mercer} p.17
- 82/11.110 Species Profiles: Life Histories and Environmental Requirements and Coastal Fishes and Invertebrates (South Florida) BLACK, RED, NASSAU GROUPERS (August 1989) {Darryl Jory and Edwin Inversen} p.21
- 82/11.111 Species Profiles: Life Histories and Environmental Requirements of Coastal Fishes and Invertebrates (South Florida) ALEWIFE AND BLUEBACK HERRING (August 1989) {Earl Bozeman, Jr.} p.17

BIOLOGICAL REPORTS CONT.

- 82.11.112 Species Profiles: Life Histories and Environmental Requirements of Coastal Fishes and Invertebrates (Mid-Atlantic) SUMMER AND WINTER FLOUNDER (August 1989) {Barbara Grimes, Melvin Huisch, and J. Howard Kerby} p.18
- 82/11.113 Species Profiles: Life Histories and Environmental Requirements of Coastal Fishes and Invertebrates (Pacific Southwest) BROWN ROCKFISH, COPPER ROCKFISH, BLACK ROCKFISH (September 1989) {David Stein and Thomas Hassler} p.15
- 82/11.114 Species Profiles: Life Histories and Environmental Requirements of Coastal Fishes and Invertebrates (Mid-Atlantic) ATLANTIC MARSH FIDDLER (September 1989) {David Stein and Thomas Hassler} p.17
- 82/11.115 Species Profiles: Life Histories and Environmental Requirements of Coastal Fishes and Invertebrates (South Florida) REEF-BUILDING TUBE WORM (December 1989) {Alexander Zale and Susan Merrifield} p.12
- 82/11.116 Species Profiles: Life Histories and Environmental Requirements of Coastal Fishes and Invertebrates (Pacific Northwest) SOCKEYE SALMON (December 1989) {Gilbert Pauley, Ron Risher, and Gary Thomas} p.22
- 82/11.117 Species Profiles: Life Histories and Environmental Requirements of Coastal Fishes and Invertebrates (Pacific Southwest) BROWN ROCK CRAB, RED ROCK CRAB, YELLOW ROCK CRAB (December 1989) {Jay Carroll and Richard Winn} p.16
- 82/11.118 Species Profiles: Life Histories and Environmental Requirements of Coastal Fish and Invertebrates (South Atlantic) STRIPPED BASS (December 1989) {Jennifer Hall, James Evans, and Michael Van Den Avyle} p.35
- 82/11.119 Species Profiles: Life Histories and Environmental Requirements of Coastal Fish and Invertebrates (Pacific Northwest) LINCOD (December 1989) {William Shaw and Thomas Hassler} p.10
- 82/11.120 Species Profiles: Life Histories and Environmental Requirements of Coastal Fishes and Invertebrates (Pacific Northwest) PACIFIC GEODUCK CLAM (December 1989) {C. Lynn Goodwin and Bruce Pease} p.14

BIOLOGICAL REPORTS CONT.

- 82/11.121 Species Profiles: Life Histories and Environmental Requirements of Coastal Fishes and Invertebrates (Pacific Southwest) DUNGENESS CRAB (December 1989) {Gilbert Pauley, David Armstrong, Robert Van Critter, and G.L. Thomas} p.20
- 82/11.122 Species Profiles: Life Histories and Environmental Requirements of Coastal Fishes and Invertebrates (Mid-Atlantic) ATLANTIC AND SHORINOSSED STURGEONS (December 1989) {Carter Gilbert} p.28
- 82/11.123 Species Profiles: Life Histories and Environmental Requirements of Coastal Fishes and Invertebrates (Pacific Northwest) DOVER AND ROCK SOLE (December 1989) {Howard Horton} p.17
- 82/11.124 Species Profiles: Life Histories and Environmental Requirements of Coastal Fishes and Invertebrates (Pacific Northwest) OLYMPIA OYSTER (December 1989) {David Couch and Thomas Hassler} p.8
- 82/11.125 Species Profiles: Life Histories and Environmental Requirements of Coastal Fishes and Invertebrates (Pacific Northwest) CRANGONID SHRIMP (December 1989) {Clifford Siegfried} p.18
- 82/11.126 Species Profiles: Life Histories and Environmental Requirements of Coastal Fishes and Invertebrates (Pacific Northwest) PACIFIC HERRING (December 1989) {Dennis Lassuay} p.18
- FWS/OBS  
82/26 A Guide To Stream Habitat Analysis Using the Instream Flow Incremental Methodology Instream Flow Information Paper: No.12 (June 1982) {Dave D. Bovee} p.248
- FWS/OBS  
82/58.2 An Ecological Characterization of Caloosahatchee River/Big Cypress Watershed (September 1984) {Richard Drew and N. Scott Schomer} p.225
- FWS/OBS  
83/02 Opportunities to Protect Instream Flows in Nebraska and Kansas (February 1983) {J. David Aikens} p.57
- FWS/OBS  
83/03 Practices for Protecting and Enhancing Fish and Wildlife on Coal Surface-Mined Land in Central and Southern Appalachia (March 1983) {Richard Ambrose, Charles Hinkle, and Calvin Wenzel} p.208

BIOLOGICAL REPORTS CONT.

- FWS/OBS  
83/08 Practices for Protecting and Enhancing Fish and Wildlife  
on Coal Surface-Mined Land in Central and Southern Appalachia  
(March 1983) {Richard Ambrose, Charles Hinkle, and Calvin  
Wenzel} p.208
- FWS/OBS  
83/09 Practicing for Protecting and Enhancing Fish and Wildlife  
on Coal Surface-Mined Land in the Green River-Hams Fork  
Region (March 1983) {Bettina Proctor, Richard Thompson,  
Jane Bunin, Kenneth Fucik, George Tamm, and Edward  
Wolf} p.242
- FWS/OBS  
83/10 Practices for Protecting and Enhancing Fish and Wildlife  
on Coal-Mined Land in the Powder River - Fort Union Region  
(March 1983) {Bettina Proctor, George Tamm, and Edward Wolf} p.246
- FWS/OBS  
83/11 Practices for Protecting and Enhancing Fish and Wildlife  
on Coal-Mined Land in the South Central U.S. (March 1983)  
{Richard Ambrose and Calvin Wenzel} p.229
- FWS/OBS  
83/12 Practices for Protecting and Enhancing Fish and Wildlife  
on Coal Mined Land in the Uinta-Southwestern Utah Region  
(March 1983) {Bettina Proctor, Richard Thompson,  
Jane Bunin, Kenneth Fucik, George Tamm, Edward Wolf} p.250
- FWS/OBS  
83/18 Protecting Instream Flows in Iowa: An Administrative  
Case Study Instream Flow Information Paper No.20  
(August 1983) {Stewart Olive} p.35
- FWS/OBS  
83/19 Lower Mississippi Valley Ecological Inventory  
User's Guide and Information Base w/Map (May 1983)  
{Angelo Beccasium Alice Redfield, William Levitan,  
Joel Smith, and Dames & Moore} p.84
- FWS/OBS  
83/22 Opportunities to Protect Instream Flows in Texas,  
Oklahoma, and Arkansas (September 1983)  
{Mary Ray White} p.94
- FWS/OBS  
83/23 The Ecology of San Francisco Bay Tidal Marshes: Community  
Profile (October 1983) {Michael Josselyn} p.102
- FWS/OBS  
83/27 Human Demographic Impacts of Fish and Wildlife Resources from  
Energy Development in Rural Western Areas (September 1983)  
{Margaret Thomas} p.357
- FWS/OBS  
83/31 Seasonal Abundance and Habitat-Use Patterns of Coastal  
Bird Populations on Padre and Mustang Island Barrier Beaches  
(February 1983) {Brian Chapman} p.72

### BIOLOGICAL REPORTS CONT.

- FWS/OBS 83/33 Field Methods and Statistical Analyses for Monitoring Small Salmonid Streams (December 1983) {Carl Armour and William Platts} p.200
- FWS/OBS 83/35 Impacts of Coal Surface Mining on 25 Migratory Birds Species of High Federal Interest (December 1983) {Judith Armbuster} p.348
- FWS/OBS 83/36 The Plants Information Network (PIN) Data Base: Colorado, Montana, North Dakota, Utah, and Wyoming (December 1983) {Philip Dittberner, and Michael Olson} p.786
- FWS/OBS 84/01 Feasibility of Using Oil Shale Wastewater for Waterfowl Wetland (January 1984) {Bruce Synder and Janet Synder} p.290
- FWS/OBS 84/03 Utilization of Surface Coal Mine Waste for Northern Pike Spawning/Rearing Marsh (April 1984) {Richard Gregory, Allen Esler, and Thomas Lenhart} p.44
- FWS/OBS 84/06 1982 National Fisheries Survey Volume I Technical Report: Initial Finding (June 1984) {Robert Judy, Thomas Murray, and Molly Whitworth} p.140
- FWS/OBS 84/08 Conducting a FERC Environmental Assessment: A Case Study and Recommendation form the Terror Lake Project (April 1984) {Stewart Olive and Berton Lamb} p.62
- FWS/OBS 84/09 The Ecology of Delta Marshes of Coastal Louisiana: A Community Profile (May 1984) {James Gosselink} p.134
- FWS/OBS 84/12 Proceedings of the National Wetland Values Assessment Workshop (May 1984) {J.Henry Satheer and Patricia Stuber} p.100
- FWS/OBS 84/15 Instream Water Temperature Model Instream Flow Information Paper No.16 (September 1984) {Fred Theurer, Kenneth Voos, and William Miller} p.IV-71
- FWS/OBS 84/20 Distribution and Abundance of Forest Birds of Guam: Results of the 1981 Survey (September 1984) {John Engbring and Fred Ramsey} p.54

### **CONTAMINANT HAZARD REVIEW (CHR)**

- 85(1.2) Cadmium Hazards to Fish, Wildlife and Invertebrates: A Synoptic Review (March 1985) {Ronald Eisler} p.26
- 85(1.3) Carbofuran Hazards to Fish, Wildlife and Invertebrates: Synoptic Review (August 1985) {Ronald Eisler} p.26
- 85(1.4) Toxaphene Hazards to Fish, Wildlife and Invertebrates: Synoptic Review (April 1985) {Ronald Eisler} p.76

BIOLOGICAL REPORTS CONT.

- 85(1.8) Dioxin Hazards to Fish, Wildlife and Invertebrates:  
Synoptic Review (May 1985) {Ronald Eisler} p.37
- 85(1.9) Diazinon Hazards to Fish, Wildlife and Invertebrates:  
A Synoptic Review (August 1986) {Ronald Eisler} p.37
- 85(1.10) Mercury Hazards to Fish, Wildlife and Invertebrates:  
A Synoptic Review (April 1986) {Ronald Eisler} p.90
- 85(1.11) Polycyclic Aromatic Hydrocarbon Hazards to Fish, Wildlife  
and Invertebrates: A Synoptic Review (May 1987) {Ronald  
Eisler} p.81
- 85(1.12) Arsenic Hazards to Fish, Wildlife and Invertebrates:  
A Synoptic Review (January 1988) {Ronald Eisler} p.92
- 85(1.13) Chlordane Hazards to Fish, Wildlife and Invertebrates:  
A Synoptic Review (March 1988) {Edward Odenkirchen and  
Ronald Eisler} p.34
- 85(1.14) Lead Hazards to Fish, Wildlife and Invertebrates:  
A Synoptic Review (April 1988) {Ronald Eisler} p.134
- 85(1.15) Tin Hazards to Fish, Wildlife and Invertebrates:  
A Synoptic Review (January 1989) {Ronald Eisler} p.83
- 85(1.16) Index to Common and Scientific Names of Species Listed  
in Contaminant Hazard Reviews 1 through 15 (February 1989)  
{Ronald Eisler and Joyce Corley} p.44
- 85(1.17) Pentachlorophenol Hazards to Fish, Wildlife and Invertebrates:  
A Synoptic Review (April 1989) {Ronald Eisler} p.72
- 85(1.18) Atrazine Hazards to Fish, Wildlife and Invertebrates:  
A Synoptic Review (May 1988) {Ronald Eisler} p.53
- 85(1.19) Molybdenum Hazards to Fish, Wildlife and invertebrates:  
A Synoptic Review (August 1989) {Ronald Eisler} p.61
- 85(1.20) Boron Hazards to Fish, Wildlife and Invertebrates:  
A Synoptic Review (April 1989) {Ronald Eisler} p.32
- 85(1.21) Chlordane Hazards to Fish, Wildlife and Invertebrates:  
A Synoptic Review (July 1989) {Ronald Eisler} p.39
- 85(1.22) Paraquat Hazards to Fish, Wildlife and Invertebrates:  
A Synoptic Review (August 1990) p.28
- 85(1.23) Cyanide Hazards to Fish, Wildlife and Invertebrates:  
A Synoptic Review (December 1991) p.55

BIOLOGICAL REPORTS CONT.

- 85(7.1) The Ecology of Irregularly Flooded Salt Marshes of the Northeastern Gulf Mexico: A Community Profile (December 1984) {Judy Stout} p.98
- 85(7.4) The Ecology of Irregularly Flooded Salt Marshes of New England: A Community Profile (June 1986) {John Teal} p.61
- 85(7.6) The Ecology of Pools 19 and 20, Upper Mississippi River: A Community Profile (September 1986) {Larry Jahn and Richard Anderson} p.142
- 85(7.7) The Ecology of the St Clair Wetlands: A Community Profile (September 1986) {Charles Herdenof and C. Nicholas Raphael} p.187
- 85(7.8) The Ecology of Pools and 11 through 13 of the Upper River: A Community Profile (December 1986) {James Eckbald} p.88
- 85(7.9) The Ecology of Coastal Marshes of Western Lake Erie: A Community Profile (February 1987) {Charles Herdendorf} p.171
- 85(7.10) The St. Mary's River Michigan: A Community Profile (May 1987) {Walter Duffy and Ted Batterson} p.138
- 85(7.11) The Ecology of Southern California Vernal Pools: A Community Profile (May 1987) {Paul Zedler} p.136
- 85(7.12) The Ecology of Open-Bottoms of Texas: A Community Profile (May 1987) {Neal Armstrong} p.104
- 85(7.13) The Ecology of Bartaria Basin, Louisiana: Am Community Profile (July 1987) {William Conner and John Day} p.165
- 85(7.14) The Ecology of Patterned Boreal Peatlands of Northern Minnesota: A Community Profile (June 1987) {Paul Glaer} p.98
- 85(7.15) The Ecology of Magu Lagoon, California: A Estuarine Profile (June 1987) {Christopher Onuf} p.122
- 85(7.19) The Ecology of the Lower Colorado River From Davis Dam to the Mexico-United States International Boundary: A Community Profile (September 1987) {Robert Ohmart, Bertain Anderson, and William Hunter} p.296
- 85(7.20) The Ecology of Rubble Structures of the South Atlantic Profile (September 1988) {Mary Hay and John Sutherland} p.67
- 85(7.22) The Ecology of the Sacramento-San Joaquin Delta: A Community Profile (September 1989) {Bruce Herbold and Peter B. Moyle} p.106

BIOLOGICAL REPORTS CONT.

- 85(7.23) The Ecology of the Soft-Bottom Benthos of San Francisco Bay: A Community Profile (September 1988) {Frederic Nichols and Mario Pamatmat} p.73
- 85(7.24) The Ecology of the Stream and Riparian Habitats of the Great Basin Region: A Community Profile (September 1989) {G. Wayne Minshall, Sherman Jensen, And William Platts} p.142
- 85(7.25) The Ecology of the Seagrass Meadows of the West Coast of Florida (September 1989) {Joseph Zieman and Rita Zieman} p.155
- 85(7.27) The Ecology of the Riparian Habitats of the Southern California Coastal Region: A Community Profile (September 1989) {Phyllis Faber, Ed Keller, and Anne Sands} p.152
- 85/09 Opportunities to Protect Instream Flows in Idaho, Oregon, and Washington (April 1985) {Kathryn Brandes} p.103
- 85/15 Tampa Bay Environmental Atlas Biological Resources and Water Resources/ St. Petersburg Map A6-B21
- 86/06 Mitigation Options for Fish and Wildlife Resources Affected by Port and Other Water-Dependent Development in Tampa Bay, Florida (June 1986) {R> Steve Dial and Donald Deis} p.150
- 86/07 Development and Evaluation of Habitat Suitability Criteria for Use in the Instream Flow Incremental Methodology Instream Flow Information: No. 21 (September 1986) {Ken Bovee} p.235
- 86/08 Introduction to Stream Network Habitat Analysis Instream Flow Information Paper No. 22 (September 1986) {John Bartlow and Terry Waddle} p.242
- 86/09 A New Perspective in Institutional Analysis: The Legal-Instructional Analysis Model (LIAM) Instream Flow Information Paper No. 23 (September 1986) {Leah Wilds} p.143
- 86(11) An Ecological Characterization of Rocky Mountain Montane and Subalpine Wetlands (September 1986) {John Windell, Beatrice Willard, David Cooper, Susan Christopher Knud-Hansen, Laurence Rink, and George Kiladis} p.298
- 87(04) Age, Growth, and Mortality of Juvenile Atlantic Salmon in Streams: A Review (September 1987) {Patric Bley} p.25
- 87(06) Opportunities to Protect Instream Flows and Wetlands Uses of Water in New Hampshire and Connecticut (August 1987) {Lynn Carney and Curtis Michael} p.25

BIOLOGICAL REPORTS CONT.

- 87(07) Effects of Prudhoe Bay Reserve Pit Fluids on Water Quality and Macroinvertebrates of Arctic Tundra Ponds in Alaska (September 1987) {Robin West} p.48
- 87(09) Soil-Vegetation Correlations on the Riparian Zones of the Gilda and San Francisco Rivers in New Mexico (September 1987) {William Dick-Peddie, Joanne Hardestry, and Barbara Sallach} p.29
- 87(10) Opportunities to Protect Instream Flows in Colorado and Wyoming (August 1987) {Terrence Trembly and George Gould} p.91
- 87(11) Soil-Vegetation Correlation in the Sandhills and Rainwater Basin Wetlands of Nebraska (September 1987) {Nanette Erickson and David Leslie} p.72
- 87(12) Synopsis of Wetland Functions and Values: Bottomlands Hardwoods with Special Emphasis on Eastern Texas and Oklahoma (September 1987) {Dan Wilkinson, Karen Schnell-McDonald, Rodney Olson, and Gregor Auble} p.132
- 88(01) Fire in North American Wetland Ecosystems and Fire-Wildlife Relations: An Annotated Bibliography (April 1988) {Ronald Kirby and Stephen Lewis} p.146
- 88(03) Biology and Conservation of the Endangered Interior Least Tern: A Literature Review (March 1988) {Paul Whitman} p.22
- 88(04) American Black Breeding Habitat Enhancement in the Northeastern United States: A Literature Review and Synthesis (June 1988) {Ronald Kirby} p.50
- 88(05) National Atlas of Coastal Waterbird Colonies in the Contiguous United States 1976-82 (September 1988) {Jeffrey Spendlow and Stephen Patton} p.236
- 88(06) Catalog of Washington Seabirds Colonies (August 1989) {Steven Speich and Terence Wahl} p.510+
- 88(08) Growth, Composition, and Fin Quality of Atlantic Salmon Fed Different Diets at Seasonal Temperatures in a Laboratory and Hatchery (May 1988) {Carol Lemm and Donald Rottiers} p.12
- 88(09) Freshwater and Ocean Survival of Atlantic Salmon and Steelhead: A Synopsis (May 1988) {Patrick Bley and John Moring} p.22
- 88(10) Annotated Historical Records of the Bald Eagle from the Northern United States (April 1988) {James Mattson} p.65
- 88(13) Invertebrates Fish Food Resources of Lotic Environmental-Instream Flow Paper: No.24 (June 1988) {Kenneth Knup} p.110

BIOLOGICAL REPORTS CONT.

- 88(14) Synopsis of the Biological Data on Loggerhead Sea Turtle *Caretta* (Linnaeus 1758) (May 1988) {C. Kenneth Dodds, Jr.} p.110
- 88(17) Soil-Vegetation Correlations in Riparian and Emergent Wetlands, Lyons County, Nevada (July 1988) {Janet Nachlinger} p.39
- 88(18) Microhistological Characteristics of Selected Aquatic Plants of Florida with Techniques for the Study of Manatee Food Habitats (September 1988) {Lawrence Hurst and Cathy Beck} p.145
- 88(21) Soil-Vegetation Correlations in Wetlands and Adjacent Uplands of the San Francisco Bay Estuary, California (August 1988) {Annie Eicher} p.39
- 88(22) Soil Vegetation Correlation in Prairie Potholes of Beadle and Deuel Counties, South Dakota (July 1988) {Daniel Hubbard, James Miller, Douglas Malo, and Kenneth Jiggins} p.97
- 88(25) Soil-Vegetation Correlations within the Riparian Zone of Butte Sink in the Sacramento Valley of Northern California (July 1988) {Michael Baad} p.48
- 88(26.4) National List of Plant Species that Occur in Wetlands: North Plains (Region 4) (May 1988) {Porter Reed, Jr} p.64
- 88(26.5) National List of Plant Species that Occur in Wetlands: Central (Region 5) (May 1988) {Porter Reed, Jr.} p.73
- 88(26.11) National List of Plant Species that Occur in Wetlands: Alaska (Region A) (May 1988) {Porter Reed, Jr.} p.86
- 88(28) Soil Vegetation Correlation in the Pocosins of Croatan National Forest, North Carolina (September 1988) {Norman Christen, Rebecca Wilbur, and Joan McLean} p.97
- 88(29) Bighead Carp (*Hypophthalmichthys Nobilis*): A Biological Synopsis (September 1988) p.47
- 88(30) Status of the Marbled Murrelet in North America: with Special Emphasis on Population in California, Oregon, and Washington (August 1988) {David Marshall} p.19
- 88(33) The Legal-Institutional Analysis Model (LIAM): A Validation Study-Instream Flow Information Paper No. 25 (August 1988) {Leah Wilds} p.73
- 88(35) Desert Bighorn Sheep: A Guide to Selected Management Practices (September 1988) {Norman Smith and Paul Krausman} p.27

BIOLOGICAL REPORTS CONT.

- 88(36) Tamaulipan Brushland of the Lower Rio Grande Valley of South Texas: Description, Human Impacts, and Management Options (September 1988) {Sonja Jahrsdoefer} p.63
- 88(37) Methods for Long-term Identification of Salmonids: A Review (May 1988) {Thomas Chart and Eric Bergerson} p.18
- 88(41) Mitigation Banking (July 1988) {Cathleen Short} p.103
- 89(02) Western State Instream Flow Programs: A Comparative Assessment Instream Flow Information Paper No.18 (October 1988) {Matthew McKinney and Jonathan Taylor} p.48
- 89(03) Soil Vegetation Correlation in Coastal Mississippi Wetlands (November 1988) {Nannette Erickson and David Leslie} p.73
- 89(04) Guidance for Modeling Causes and Effects in Environmental Problem Solving (October 1988) {Carl Armour and Samuel Williamson} p.21
- 89(05) The Pysicochemistry, Flora and Fauna of Intermittent Prairie Streams: A Review of the Literature (March 1988) {Alexander Zale and David Leslie} p.44
- 89(07) Wetlands and Soil Vegetation Arctic Foothills, Alaska (June 1989) {Marilyn Walker, Donald Walker, and Kaye Everette} p.89
- 89(08) Soil-Vegetation Correlation in Transition Zones of Rhode Island Red Maple Swamps (March 1989) {Sarah Allen, Francis Golet, Anthony Davis, and Thomas Sokoloski} p.47
- 89(09) Opportunities to Protect Instream Flow and Wetlands Uses of Water in Kentucky (March 1989) {(Beth Couhlan and J. Allen Singleton} p.39
- 89(12) Atlantic Salmon Brood Stock Management and Breeding Handbook (July 1989) {Harold Kincaid and Jon Stanley} p.42
- 89(13) North American Breeding Bird Survey Annual Summary 1988 (June 1989) {Sam Droege} p.16
- 89(15) Mussel (Bivalvia: Uniondea) of the Cumberland River Review of Life Histories and Ecological Relationships (July 1989) {Mark Gordon and James Layzer} p.99
- 89(22) Marsh Management in Coastal Louisiana: Effects and Issues Proceedings of A Symposium Baton Rouge, Louisiana June 7-10, 1988 (September 1989) {Waly Duffy and Darryl Clark} p.378
- 90(2) Evaluating Soil Contamination (July 1990) {W. Nelson Beyer} p.25

BIOLOGICAL REPORTS CONT.

- 90(5) Ecology and Assessment of Warmwater Streams: Workshop Synopsis (June 1990) {Mark Bain} p.44
- 90(6) Soil-Vegetation Correlation in the Connecticut River Floodplain of Western Massachusetts (September 1990) {Peter Veneman and Ralph Tiner} p.51
- 90(07) Opportunities to Protect Instream Flows and Wetland Uses of Water in Florida (October 1990) {Nina Burkardt} p.32
- 90(08) North American Breeding Bird Survey Annual Summary, 1989 (August 1990) {Sam Droege and John Saucer} p.22
- 90(09) Soil-Vegetation Correlation in Selected Wetlands and Uplands of North-Central Florida (August 1990) {G. Ronnie Best, Debra Segal, and Charlotte Wolfe} p.48
- 90(10) Test of a Habitat Suitability Model for Black-capped Chickadee (October 1990) {Richard Schroeder} p.8
- 90(11) Brown Trout Population and Habitat Changes Associated with Increases Minimum Low Flows in Douglas Creek, Wyoming (October 1990) {S.W. Wolff, T.A. Wesche, D.D. Harris, and W.A. Hubert} p.20
- 90(12) Sea Otter Symposium: Proceedings of Symposium to Evaluate the Response Effort on behalf of Sea Otters After The EXXON VELDEZ Oil Spill into Prince William Sound, Anchorage, Alaska 17-19 April 1990 (December 1990) {Keith Bayha and Jennifer Kormendy} p.483
- 90(13) Results of the Second Joint U.S. - U.S.S.R. Bering Sea Expediting Summer 1984 (December 1984) {Pasquale Roscigon} p.317
- 90(14) The Sea Otter (*Enhydra lutris*): Behavior, Ecology, and Natural History (September 1990) {Marianne Reidman and James Estes} p.126
- 90(15) Ecology of Wetlands in Big Meadows, Rock Mountain National Park, Colorado (October 1990) {David Cooper} p.45
- 90(16) Reference Manual for Generation and Analysis of Habitat Time-Series--Version II Instream Flow Information Paper No.27 (December 1990) {Robert Milhous, John Barthlow, Marlys Updike, and Allen Moos} p.249
- 90(17) Ninety Years of Salmon Culture at Little White Salmon National Fish Hatchery (December 1990) {William Nelson and Jack Bodle} p.22

BIOLOGICAL REPORTS CONT.

- 90(18) Federal Coastal Wetland Mapping Programs (December 1990)  
{Sari Kiraly} p.173
- 90(19) Synthesis of Soil-Plant Correspondence Data From Twelve Wetland  
Studies Throughout the United States (December 1990) {C.A.  
Segelquist, W.L. Slauson, M.L. Scott, and G.T. Auble} p.24
- 90(20) An Ecological Characterization of the Tampa Bay Watershed  
(December 1990) {Steven Wolf and Richard Drew} p.334
- 90(21) An Ecological Characterization of the Florida Springs Coast:  
Pithachascotee to Waccassa Rivers (December 1990) {Steve Wolf}  
p.323
- 90(22) Guidance for Evaluating and Recommending Temperature Regimes  
to Protect Fish and Instream Flow Information Paper No.28  
(December 1990) {Carl Armour} p.13
- 90(23) Pacific Island Flying Foxes: Proceeding of an International  
Conservation Conference (July 1992) {Don E. Wilson} p.176
- Biol.  
Report 1\* The Ecology of Humbolt Bay, California: A Estuarine Profile  
(January 1992) {Roger Barnhart, Milton Boyd, and Pequegnat}  
p.121
- Biol.  
Report 2\* Fenvalerate Hazards to Fish, Wildlife and Invertebrates: A  
Synoptic Review (May 1992) {Ronald Eisler} p.43
- Biol.  
Report 3\* An Evaluation of Regression Methods to Estimate Nutritional  
Condition of Canvasbacks and Other Water Birds (may 1992) {D.W.  
Sparling, J.A. Barzen, J.R. Lovvorn, and J.R. Serie} p.11
- Biol.  
Report 4\* Diflubenzuron Hazards to Fish, Wildlife and Invertebrates: A  
Synoptic Review (June 1992) {Ronald Eisler} p.36
- Biol.  
Report 5\* Vole Management in Friut Orchards (March 1993) {Mark Tobin and  
Milo Richmond} p.18
- Biol.  
Report 6\* Ecology of Ban-tailed Pigeons in Oregon (August 1992) {Robert  
Jarvis and Michael Passmore} p.38

### FISH AND WILDLIFE LEAFLET

- L-1        Acid Rain: Effects of Fish and Wildlife (1985)  
          Kathleen Mayer and R. Kent Schreiber} p.8
- L-4        Monitoring Fish and Wildlife for Environmental Contaminants:  
          The National Contaminants Biomonitoring Program (1986) {Joel Jacknow,  
          J. Larry Ludkee, and Nancy Coon} p.15
- L-6        Some Parasites and Diseases of Cultured Fishes:  
          Current Perspectives (1986) {Glen Hoffman and Andrew Mitchell} p.14
- L-7        Bird Damage to Ripening Field Corn Increases in the United States  
          from 1971 to 1981 (1986) {Jerome Besser and Daniel Brady} p.6
- L-10       Conservation Useful in Fish Culture and Fishery Research and  
          Management (1987) {Brenda Moore and Andrew Mitchell} p.31
- L-12       Aquatic Cycling of Selenium: Implication for Fish and Wildlife (1987)  
          {A. Dennis Lemly and Gregory Smith} p.31
- L-13       WATERFOWL MANAGEMENT HANDBOOK (chapters below)
- 13.1.1.   Nutritional Values of Waterfowl Foods (1989) {Leigh  
          Frederickson} p.5
- 13.1.2.   Life History Traits and Management of the Gadwall (1990)  
          {James K. Ringelman} p.6
- 13.1.3.   Life History Strategies and Habitat Needs of the Northern  
          Pintail (1991) {Leigh Frederickson and Mickey Heitmeyer} p.4
- 13.1.6.   Life History Habitats Needs of the Wood Duck (1992) {Katie Dueger}  
          p.8
- 13.2.2.   Innovation and Teamwork in the North American Waterfowl Management  
          Plan (1989) {Kathryn Hohman} p.5
- 13.2.4.   Avian Botulism: Geographic Expansion of a Historic Disease (1989)  
          {Louis Locke and Milton Friend} p.5
- 13.2.5.   Avian Cholera: A Major New Cause of Waterfowl Mortality (1989)  
          {Milton Friend} p.5
- 13.2.7.   Identify the Factors that Limit Duck Production (1992) {James K.  
          Ringelman} p.8
- 13.2.8.   Rescue and Rehabilitation of Oiled Birds (1989) {Sallie Welte and  
          Lynne Frink} p.7
- 13.2.10.   Decoy Ducks (1989) {James Ringelman} p.3
- 13.2.12.   Artificial Nest Structures for Canada Geese (1990) {I.J. Ball} p.8

FISH AND WILDLIFE LEAFLET CONT.

- 13.2.15. Human Disturbances of Waterfowl: Causes, Effect, and Management (1992) {Carl Korschgen and Robert Dahlgren} p.8
- 13.3.1. Invertebrates Response to Wetland Management (1988) {Leigh Frederickson and Frederic Reid} p.6
- 13.3.3. Aquatic Invertebrates Important for Waterfowl Production (1990) {Jan Eldridge} p.7
- 13.3.5. Ecology of Northern Prairie Wetlands (1990) {James Ringelman} p.8
- 13.3.6. Ecology of Montane Wetlands (1992) {James Ringelman} p.8
- 13.3.7. Ecology of Playa Lakes (1992) {David Haulos and Loren Smith} p.8
- 13.4.1. Consideration of Commonly Characteristics for sampling Vegetation (1988) {Leigh Frederickson} p.5
- 13.4.2. Economic and Legal Incentives for Waterfowl Management for Private Lands (1990) {Richard Schultz} p.5
- 13.4.3. Managing Agricultural Incentives for Waterfowl (1990) {James Ringelman} p.4
- 13.4.4. Habitat Management for Monitoring Waterfowl (1990) {James Ringelman} p.6
- 13.4.5. A Technique for Estimating Seed Production of Common Moist-soil Plants (1992) {Murray Laubhan} p.8
- 13.4.6. Strategies for Water Level Manipulations in Moist-Soil Systems (1991) {Leigh Frederickson} p.8
- 13.4.7. Managing Beaver to Benefit Waterfowl (1991) {James Ringelman} p.7
- 13.4.9. Preliminary Consideration for Manipulating Vegetation (1988) {Leigh Frederickson and Frederic Reid} p.5
- 13.4.10. Control of Willow and Cottonwood Seedlings in Herbaceous Wetlands (1988) Leigh Frederickson, Frederic A. Reid} p.7
- 13.4.11. Control of Purple Loosestrife (1989) {Daniel Thompson} p.6
- 13.4.12. Control of Phragmites or Common Reed (1989) {Diana Cross and Karen Fleming} p.5
- 13.4.18. Chufa Biology and Management (1991) {James R. Kelley, Jr. and Leigh Frederickson} p.6

FISH AND WILDLIFE LEAFLET CONT.

- L-14        Publications in Region 8
- L-15        Treatment Tips for Fish Producers (1989) {Andrew Mitchell and Fred Meyers} p.19
- L-16        Tapping into the Fish and Wildlife Information Explosion: Commercial On-line Database (1992) {Homer Kemp} p.5
- L-17        Salmonid Whirling Disease (1992) {Maria Markiw} p. 11

### FISH AND WILDLIFE RESEARCH

- 1 Life History and Status of the Endangered Cui-ui of the Pyramid Lake, Nevada (1986) {G. Gary Scoppettons, Mark Coleman, and Gary Wedmeyer} p.23
- 3 Taxonomy, Life History, and Ecology of Mountain-Mahogany Defoliator, *Stamnodes Animata* (Pearsall), in Nevada (1988) {Malcolm Furniss, Douglas Ferguson, Kenneth Voget, J. Wayne Burkhardt Arthur Tiedman, and John Oldmeyer} p.26
- 4 Demographic Characteristics of Maine Woodcock Population and Effects of Habitat Management (1988) {Thomas Dwyer, Greg Sepik, Eric Derleth, and Daniel McAuley} p.29
- 5 Premigrational Movements and Behavior of Young Mallards and Wood Ducks in North-Central Minnesota (1989) {Ronald Kirby, Lewis Cowardin, and John Tester} p.25
- 6 Water and Habitat Dynamics of the Mingo Swamp in Southern Missouri (189) {Mickey Heitmeyer, Leigh H. Frederickson, and Gary Krause} p.26
- 7 Chironomidae of the Southeastern United States: A Checklist of Species and Notes on Biology, Distribution, and Habitat (1990) {David Lenat, Broughton Caldwell, and David Smith} p.46
- 8 Forest bird Habitat Suitability Models and Development of General Habitat Models (1991) {Beatrice Horne and John Wiens} p.31
- 9 Use of Wetland Habitats by Selected Nongame Water Birds in Maine (1991) {James Gibbs, Jerry Longcore, Daniel McAuley, and James Ringelman} p.57
- 10 Wigeograss (*Ruppia maritima*): A Literature Review (1991) {Harold Kantrud} p.58
- 11 Population Characteristics and Simulation: Modeling of Black Ducks (1992) {Warren W. Blander} p.200
- 12 Status of the American Eider with Special Reference to Northern New England (1991) {William Krohn, Patrick Corr, and Alan Hutchinson} p.17

FISH AND WILDLIFE TECHNICAL REPORTS

- 1        Effects of the Weather on Breeding Ducks in North Dakota  
         (1984) {Merrill Hammond and Douglas Johnson} p.17
- 2        Lethal Dietary Toxicities of Environmental Contaminants and  
         Pesticides to Coirinx (1986) {Elwood Hill and Michael Camardese}  
         p.147
- 3        Effects of Vegetation Manipulation on Breeding Waterfowl in  
         Prairie Wetlands - Literature Review (1986) {Harold Kantrud} p.15
- 5        Response to Lake Trout and Rainbow Trout to Dietary Cellulose  
         (1986) {H.A. Poston} p.6
- 7        Bird Behavior and Mortality in Relation to Power Lines in  
         Prairie Habitats (1987) {Craig Faanes} p.24
- 8        Limnological and Fishery Studies on Lake Sharpe, a Main-stem  
         Missouri River Reservoir 1964-1975 (1987) {Fred June, Lance Beckman,  
         Joseph Elrod, Gerald O'Byran and David Vogel} p.23
- 9        Trends in Spawning Populations of Pacific Anadromous Salmonids  
         (1987) {Gregory Konkel and John McIntrye} p.17
- 10       Factors Affecting the Mobilization, Transport, and Bioavaibility  
         of Mercury in Reservoirs of the Upper Missouri River Basin (1987)  
         {Glenn Phillips, Patricia Medvick, Donald Skaar, and Denise Knight}  
         p.64
- 11       Waterfowl Status Report, 1980
- 12       Waterfowl Status Report, 1981  
         (1987) {A. Novara, J. Voelzer  
         and Arthur Allen} p.99
- 13       Migration, Harvest, and Population Characteristics of Mourning  
         Doves Banded in the Western Management Unit, 1964-1977 (1988)  
         {Roy Tomlison, David Dolton, Henry Reeves, James Nichols, and  
         Laurence McKibben} p.101
- 14       Waterfowl Damage and Control Methods in Ripening Grain: An Overview  
         (1988) {C. Edward Knittle and Richard Porter} p.17

same  
cover

FISH AND WILDLIFE TECHNICAL REPORTS CONT.

- 15      Bird Damage to Sunflower in  
North Dakota, South Dakota  
and Minnesota, 1979-1981      same cover
- 16      Influences of Environmental  
Factors to Sunflower (1988)  
{Roger Hothem, Richard DeHaven  
and Steven Fairizil} p.24
- 17      Applications of a Simulation Model to Decisions in Mallard Management  
(1988) {Lewis Cowardin, Douglas Johnson, Terry Shaffer} p.37
- 18      Chemical Characteristics of Prairie Lakes In South-Central  
North Dakota--Their Potential for Influencing Use by Fish  
and Wildlife (1988) {George Swanosn, Thomas Winter, Vyto  
Adomatistis, and James LeBaugh} p.44
- 19      American Wildcelery (VALLISNERIA AMERICANA):  
Ecological Consideration for Restoration (1988)  
{Carl Korschengen and William Hestbeck} p.24
- 20      Temporal and Geographic Estimates of Survival and Recovery Rates  
for the Mallard, 1950 through 1985 (1989) {Diane Chu and Jay  
Hestbeck} p.57
- 21      Migration of Radio-marked Whooping Cranes from the Arkansas-Wood  
Buffalo Population: Pattern of Habitat Use, Behavior, and Survival  
(1989) {Marshall Howe} p.33
- 22      Electrofishing, A Power Related Phenomenon (1988)  
{A. Lawrence Kolz and James Reynods} p.24
- 24      Program CONTRAST (A General Program for Analysis of Several  
Survival or Recovery Rate Estimates) (1989) {James Hines and John  
Saucer} p.7
- 25      Techniques for Shipboard of Marine Birds (1989)  
{Patrick Gould and Douglas Forsell} p.22
- 26      Nesting Ecology of Golden Eagles and  
Other Raptors in Southeastern Montana and  
Northern Wyoming
- 27      Distribution and Abundance of Golden Eagles  
and Other Raptors in Campbell and Converse  
Countries, Wyoming (1990) {Robert Phillips,  
Anne Wheeler, J. Michael Lockhart,  
Terrance McEneaney, and Nick Forrester} p.31

FISH AND WILDLIFE TECHNICAL REPORTS CONT.

- 28        Genetic Differentiation of Walleye Stocks in Lake St. Clair and Western Lake Erie (1990) {Thomas Todd} p.19
- 29        Dicofol (Kelthane) as an Environmental Contaminants: A Review (1990) {Donald Clark} p.37
- 30        Tracking Wildlife by Satellite: Current Systems and Performance (1990) {Richard Harris, Steven Fancy, David Douglas, Gerald Garner, Steven Amstrup, Thomas McCabe, and Larry Pank} p.52
- 31        Effects of Harvest on Feral Rock Dove Survival, Nest Success, and Population Size (1990) {J. Edward Kautz and Richard Malecki} p.16
- 32        Dabbling Duck Recruitment in Relation to Habitat and Predators at Union Slough National Wildlife Refuge, Iowa (1991) {Joseph Fleskes and Edwin Klass} p.19

### FISH DISEASE LEAFLETS

- 79        Systemic Noninfectious Granulomatoses of Fishes (1989)  
          {Roger Herman} p.4
- 80        Ceratomyxa Shasta, A Myosporean Parasite of Salmonids (1989)  
          {J.L. Bartlomew, J.S. Rohovec, and J.L. Fryer} p.8
- 81        Selected Bibliography on Disease and Parasites of Fishes: Books  
          Proceedings, and Reviews, 1978-1989 (1989) {Joyce Mann} p.7
- 82        Enteric Redmouth Disease of Salmonids (1990) {G.L. Bullock} p.3
- 83        Bacterial Gill Disease of Freshwater Fishes (1990) {Philip  
          McAllister} p.5
- 84        Viral Hemorrhagic Septicemia of Fishes (1990)  
          {Philip McAllister} p.5

FISH HEALTH BULLETIN

- 1 Edwardsiella Infection of Fishes (1989) {G.L. Bullock and J.P. McCrearen} p.4
- 2 Channel Catfish Virus Disease (1989) {J.P. McCrearen, J.P. Bullock, and John Plumb} p.4
- 4 Enteric Redmouth Disease (1990) {G.L. Bullock} p.4
- 5 Furunculosis and Other Disease Caused by Aeromonas Salmonids (1990) {G.L. Bullock and J.P. Craren} p.4
- 6 Bacterial Kidney Disease of Salmon and Trout (1990) {G.L. Bullock and J.P. Craren} p.4
- 7 Aeromonas Hydrophila Infections of Fishes (1990) {Rocco Cippriano and G.L. Bullock} p.4
- 8 Protozoan Parasites of Freshwater Fishes (1990) {Fred Meyers and G.L. Bullock} p.4
- 9 Viral Hemorrhagic Septicemia of Fishes (1990) {Joyce Mann} p.4

## INVESTIGATION IN FISH CONTROL

- |     |   |   |            |
|-----|---|---|------------|
| 92  | Acute and Chronic Toxicity of Rotenone to <i>Daphnia magna</i> {J.J. Rach, T.D. Bills, and L.L. Marking}  | } | same cover |
| 93  | Toxicity of Rotene to Developing Rainbow Trout {T.D. Bills, J.J. Rach, and L.L. Marking}  |   |            |
| 94  | Oral Toxicity of Rotene to Mammals {L.L. Marking} (1988) p.17   |   |            |
| 95  | Deposition and Persistence of Rotenone in Shallow Ponds During Cold and Warm Seasons (1988) {P.A. Gilderhus, V.K. Dawson, and J.L. Allen} p.7         |   |            |
| 96  | Effects of Environmental Factors on the Toxicity of Chloramine-T to Fish {T.D. Bills, L.L. Marking, V.K. Dawson, and J.J. Rach} (1988)                | } | same cover |
| 97  | Effects of Organic Matter and Loading Rates to Fish on the Toxicity of Chloramine-T {T.D. Bills, L.L. Marking, V.K. Dawson, and G.E. Howe} p.10       |   |            |
| 98  | History of Acute Toxicity Tests with Fish, 1863-1987 (1989) {Joseph Hunn} p.10  |   |            |
| 99  | Evaluation of 215 Candidate Fungicides for Use in Fish Culture (1989) {Tom Bailey and Susan Jeffrey} p.9  |   |            |
| 100 | Observations on the Effects of Irrigation Water Containing 3-Trifluoromethyl-4-Nitrophenol (TFM) on Plants {Philip A. Gilderhus}                      | } | same cover |
| 101 | Residues of Malachite Green in Muscle, Eggs, and Fry of Treated Atlantic Salmon and Chinook Salmon {J.L. Allen}                                       |   |            |
| 102 | Effects of Water Temperature, Hardness, and pH on the Toxicity of Benzocaine to Eleven Freshwater Fishes {Terry Bill, George Howe, Leif Marking} p.13 |   |            |

NORTH AMERICAN FAUNA

- 65 Seven New White-Winged Doves From Mexico, Central America,  
and Southwestern United States (May 1968)
- 69 Natural History of the Swainson's Warbler  
(February 1971) {Brooke Meanley} p.90
- 70 The Distribution and Occurance of the Birds of Jackson  
County, Oregon, and Surrounding Areas (1975) {M. Ralph  
Browning} p.69
- 71 The Screech Owl; It's Life History and Population Ecology in  
Northern Ohio (1975) {Laurel VanCamp and Charles Henry} p.136
- 73 Birds of the St Croix River Valley: Minnesota and Wisconsin  
(1981) {Craig Faanes} p.196
- 75 Mammals of the La-Selva-Braulio Carrillo Complex, Costa Rica  
(December 1989) {Robert Timm, Don Wilson, Barbara Clauson,  
Richard LaVal, and Christopher Vaughan} p.162
- 76 Birds of the Kilbuck and Ahklun Mountain

#### RESOURCE PUBLICATIONS

- 91 Edible Land Snails in the United States (August 1970)  
{Lola Dees} p.8
- 135 Annotated Bibliography for Aquatic Resource Management  
of the Upper Colorado River Ecosystem (1980)  
{Richard Wydoski, Kim Gilbert, Karl Seehaler,  
Charles McAda, and Joy Wydoski} p.136
- 139 Native Names of Mexican Birds (1981) {William  
Birkstien and Roy Ellington} p.159
- 141 Use of Wetland Habitats by Birds in the National Petroleum  
Reserve-Alaska (1981) {Dirk Derkson, Thomas Ruth, and William  
Eldridge} p.27
- 142 Key Trematodes Reported in Waterfowl (September 1981)  
{Malcolm McDonald} p.156
- 144 Avian Use of Sheyenne Lake and Associated Habitats in  
Central North Dakota (March 1982) {Craig Faanes} p.24
- 146 Effects of the 1976 Seney National Wildlife Refuge Wildfire  
on Wildlife Habitats (July 1982) {Stanley Anderson} p.28
- 147 Population Ecology of the Mallard VII. Distribution and Derivation  
of the Harvest (September 1982) {Robert Munro and Charles Kimball}  
p.125
- 148 Management of Seasonally Impoundments for Wildlife  
(1982) {Leigh Frederickson} p.29
- 151 Avian Use of Forest Habitat in the Northeastern North Dakota  
(1983) {Craig Faanes and Jonathan Andrew} p.23
- 153 Handbook of Acute Toxicity of Pesticides to Wildlife (1984)  
{Rick Hudson, Richard Tucker, and M.A. Haegele} p.90
- 154 Nonconsumptive Use of Wildlife in the United States (1984)  
{William Shaw and William Mangu} p.20
- 155 Ecology and Management of the Bullfrog (1984) {R. Bruce Bury  
and Jill Whelan} p.196
- 157 The Breeding Bird Survey: It's First Fifteen Years, 1965-1979  
(1986) {Chandler Robbins, Danny Bystrak, and Paul Geissler} p.196
- 158 Techniques for Studying Nest Success of Ducks in the Prairie Pothole  
Region (1986) {Albert Klett, Harold Duebert, Craig Faanes, and  
Kenneth Higgins} p.24

RESOURCE PUBLICATIONS CONT.

- 164 Effects of Contaminants on Naid Mollusks (Unionidae): A Review (1987) {Marian Havlik and Leigh Marking} p.20
- 166 Checklist of Vertebrates of the United States, U.S. Territories, and Canada (1987) {Richard Banks, Roy McDiarmid, and Alfred Garden} p.79
- 168 Mourning Dove Nesting: Seasonal Patterns and Effects of September Hunting (1987) {Paul Geissler, David Dolton, Rebecca Field, Richard Coon, H. Franklin Percival, Don Hayne, Lawrence Soileau, Ronnie George, James Dunks, and S, Dwight Bunnell} p.33
- 169 Saltcedar Control for Wildlife Habitat in the Southwest (1987) {Theodore Kerpez and Norman Smith} p.16
- 171 Sand and Gravel Pits as Fish and Wildlife Habitat in the Southwest (1988) {William Matter and R. William Mannan} p.11
- 172 Satellite Telemetry: A New Tool for Wildlife Research and Management (1988) {Steve Fancy, Larry Pank, David Douglas, Catherine Curby, Gerald Garner, Steve Amstrap, and Wayne Regelin} p.54
- 173 Key to Acanthocephala Reported in Waterfowl (1988) {Malcolm McDonald} p.45
- 174 Obsolete English Names of the North American Birds and Their Modern Equivalents (1988) {Richard Banks} p.37
- 176 Sago Pondweed (*Pontamogeton pectinatus* L.): A Literature Review (1990) {Harold Kantrud} p.89
- 177 Field Manual for Investigation in Fish Control (1990) {Fred Meyers and Lee Barclay} p.120
- 178 Section 404 and Wetland Alteration in the Platte River Basin of Colorado (1990) {Douglas Gladwin, Mary Jennings, James Roelle, and Duane Asherin} p.19
- 179 Hydrology of the Middle Rio Grande From Velarde to Elephant Butte Reservoir, New Mexico (1992) {Thomas Bulklard and Stephen Wells} p.51
- 180 Waterfowl Production on the Woodworth Station in South-Central North Dakota (1992) {Kenneth Higgins, Leo Kirsch, Albert Klett, and Harvey Miller} p.79
- 181 Trends and Management of Wolf-Livestock Conflicts in Minnesota (1992) {Steven Fritts, William Paul, L. Davis, and David Scott} p.27
- 182 Selection of Prey by Walleyes in the Ohio Waters of the Central Basin of Lake Erie, 1985-1987 (1992) {David Wolfret and Michael Burr} p.14

RESOURCE PUBLICATIONS CONT.

- |     |  |              |
|-----|--|--------------|
| 183 | Effects of the Lampricide 3-Trifluoromethyl-4-Trifluoromethyl-4-Nitrophenol on the Pink Heelsplitter   | ] same cover |
| 184 | Methods for Detoxifying the Lampricide 3-Trifluoromethyl-4-Nitrophenol in Stream (1992) {Terry Bills, Jeffrey Rach, L. Marking George Howe} p.15     |              |
| 185 | Group Decision-Making Techniques for Natural Resource Management Applications (1992) {Beth Coughlan and Carl Amour} p.55                             |              |
| 186 | DUCKDATA: A Bibliographic Data Base for North American Waterfowl (Anatida) and their Wetlands Habitat (1992) {Kenneth Reinecke and Don Delnicki} p.7 |              |
| 187 | Dusky Canada Goose: An Annotated Bibliography (1992) {Bruce Campbell and Johnny Corney} p.30   |              |
| 188 | Human Disturbances Waterfowl: An Annotated Bibliography (1992) {Bruce Bingham and George Gould} p.33   |              |
| 189 | Opportunities to Protect Instream Flow and Wetland Uses of Water in Nevada (1992) {James Bingham and George Gould} p.33                              |              |
| 190 | Assessment of Habitat of Wildlife Communities on the Snake River, Jackson, Wyoming (1992) {Richard Schroeder and Arthur Allen} p.21                  |              |

### WILDLIFE RESEARCH REPORT

- 1      An Analysis of the Population Dynamics of Selected Avian  
Species: With Special Reference to Changes During the Modern  
Pesticide Era (1972) {Charles Henny} p.98
- 3      Geographic Variation in *Myotis Californicus* in the Southwestern  
United States and Mexico (1975) {Michael Bogan} p.31
- 5      Breeding Biology of the Spectacled Caiman, *Caiman Crocodilus*  
*Crocodilus* in the Venezuelan Llanos (1977) {Mark Staton and James  
Dixon} p.21
- 6      Impact of Red Fox Predation on the Sex Ratio of Prairie Mallards  
(1977) {Douglas Johnson and Alan Sargeant} p.56
- 7      The West Indian Manatee (*Trichechus manatus*) (1977)  
{Sandra L. Husar} p.17
- 10     Atlantic Walrus (*Odobenus Rosmarus Rosmarus*): A Literature Survey  
Survey and Status Report (1978) {Randall R. Reeves} p.40
- 13     Herpetological Communities (1982) {Norman Scott, Jr.} p.239
- 15     Effects of Soils and Grazing on Breeding Birds of Uncultivated  
Upland Grassland of the Northern Great Plains (1982) {Harold Kantrud  
and Kologiski} p.33

## GENERAL INTEREST PUBLICATIONS

A Home for Pearl (video and guide)

Administration of the Marine Mammal Protection Act of 1972

America's Sea Turtles (brochure)

Atlantic and Gulf Coast Barriers

Attract Birds (brochure)

Backyard Bird Feeders (brochure)

Build a Birdfeeder for About a Buck

Buyer Beware (brochure)

(The) California Condor - Needs Our Help !

Career with the U.S. Fish and Wildlife Service

CATS of North America (poster)

Coastal Wetlands of the Continental United States

Conservation Note 1- Birds

Conservation Note 4- America's Upland Game Birds

Conservation Note 5- Bird Banding: The How's and Why's

Conservation Note 6- Snakes

Conservation Note 8- Migration of Birds

Conservation Note 11- Pronghorn Antelope

Conservation Note 18- The Texas Longhorn

Control of Bird Damage at Aquaculture Facilities

Daffy - Our Wetlands Need You Now ! (brochure)

(The) Department of the Interior - A Description of each Interior Bureau

(The) Difference Between Endangered and Extinct is Forever (poster)

Diving Ducks (brochure)

Ducks Get Sick Too ! (brochure)

**GENERAL INTEREST CONT.**

Duck Stamp Story (brochure)

Endangered Means There's Still Time (poster #1 Coastal Species)

Endangered Means There's Still Time (poster #2 Desert Species)

Endangered Species (brochure)

Endangered Species - Endangered Still Means There's Time (folder)

Endangered Species Act of 1973 (Amended)

Endangered and Threatened Wildlife and Plants

Endangered and Threatened Wildlife and Plants; Animal Candidate Review

ESM Part 104 (Habitat Evaluation Manual)

Estuarine: Cradles of Life

Federal Aid in Sport & Wildlife Restoration

Field and Stream Jr.

Fifty Years of Restoring America's Wildlife, 1937-1987 (poster)

Fisheries and Wildlife Research and Development/ Bi-annual Report

Florida Wetlands: Status and Trends 1970's to 1980's

Getting the Message Across with Radio

(The) Great Plains Initiative: A New Era in Wildlife Conservation (brochure)

Homes for Birds (brochure)

A Host of Sea Birds - Alaska Wildlife Portrait Series #4

How to Work Effectively with New Media

How to Write a News Release

In Celebration of America's Wildlife (video and guide)

Join Us in A Partnership for Wetlands - North America Waterfowl Management Plan (brochure)

Know Before You Go (brochure)

**GENERAL INTEREST CON'T**

Know the Black Duck (brochure)

Manual for Bait Culture in the South

Mark Trail: Story of a Fish in Trouble (coloring book)

Migratory Birds: Final Rule (Revised List - Federal Register, April 5, 1985)

(The) Mini Page - Endangered Species

National Wetlands Priority Conservation Plan

National Survey of Fishing, Hunting, and Wildlife Associated Recreation 1985

National Survey of Fishing, Hunting, and Wildlife Associated Recreation 1991

(National Overview - Issued Sept. 1992 - Preliminary Findings

National Wildlife Refuges: Conserving Habitat and History (brochure)

National Wildlife Refuge System (brochure)

National Wildlife Refuge -- A Visitor's Guide (brochure)

North American Waterfowl Management Plan: Waterfowl for the Future (brochure)

Oil Spills and Living Organisms

Pacific Salmon (poster)

Partners for Wildlife (brochure)

Pesticide Use and Endangered Species (brochure)

Placing Animal and Plants in the List of Endangered and Threatened Wildlife and Plants List (brochure)

Recreational Opportunities on Public Lands (brochure)

Refuge Mangers' Address List - 1992

Research and Development - U.S. Fish and Wildlife Service (Annual Report)

Restoring America's Sport Fisheries (brochure)

**GENERAL INTEREST CONT.**

Restoring America's Wildlife (revised) (brochure)  
Sarcocystis - Rice Breast Disease in Waterfowl (brochure)  
Savory Seafood (brochure)  
Take Pride in America (brochure)  
The Brown Tree Snake: A Harmful Pest Species (brochure)  
Trick to Control Birds  
U.S. Fish and Wildlife Service (brochure)  
Vanishing Gulf Coast Wetlands  
Volunteers - U.S. Fish and Wildlife Service (brochure)  
Wetlands Action Plan - Meeting the Presidents Challenge  
Wetlands Losses in the United States, 1780's to 1980's  
Wetlands Reserve Program (brochure)  
Wetlands, Water. Wildlife, Plants and People (Black and White  
Poster Edition)  
Wetlands, Water, Wildlife, Plants and People (Grade School Poster  
Edition)  
Wetlands, Water, Wildlife, Plants and People (Middle School Poster  
Edition)  
Wetlands- We Need 'Em...Wildlife Needs 'Em Too (Poster)  
Why Save Endangered Species ? (revised) (brochure)  
Wildlife Diversity Through Habitat Diversity  
Your Guide to Fishing on National Wildlife Refuges

WILDLIFE BIOLOGUE SERIES

(one page life history of species)

Endangered Species:

General Information

American Alligator  
Bald Eagle  
Black Footed Ferret  
Brown Pelican  
California Condor  
Gray Wolf  
Grizzly Bear  
Habitat  
Peregrine Falcon  
Polar Bear  
Spotted Owl  
Red Wolf  
West Indian Manatee (Sea Cow)  
Whooping Crane

Other Species:

American Buffalo  
American Elk  
Armadillo  
Badger  
Bald Eagle  
Beaver  
Black Bear  
Blue Whale  
Bobcat  
Caribou  
Chesapeake Bay Primer  
Cougar  
Coyote  
Dolphin  
Fox Squirrel  
Fur Seal  
Giant Panda  
Great Horned Owl  
Hummingbirds  
Key Deer  
Life in a Fox Den  
Muskrat  
Opossum  
Pacific Salmon  
Polar Bear  
Prairie Dog  
Pronghorn Antelope  
Raccoon  
Right Whale  
Rocky Mountain Goat

CONT.

Sandhill Crane  
Sea Otter  
Snowy Egret  
Snowy Owl  
Trout  
Trumpeter Swan  
Turkey Vulture  
Weasel  
Wetlands  
White-tailed Deer  
Wolverine  
You Asked About Hunting



## ADDENDUM SHEET

The following corrections and additions should be added to the publications list, since the previous list dated March 1993 was distributed:

### CORRECTIONS

- p.4           Habitat Suitability Index Modes: Blue Winged Teal (should read report number 82/10.114)
- p.5           Habitat Suitability Index Models: Black Bear 82/10.144 (reads correctly)

### NEW PUBLICATION ARRIVALS:

#### BIOLOGICAL REPORTS:

- |                      |   |
|----------------------|---|
| Biological Report 7  | A Model of the Productivity of the Northern Pintail (February 1993) {John Carlson, William Clark, and Erwin Klass} p.20   |
| Biological Report 8  | Guidelines for the Development of Community-level Habitat Evaluation Models (February 1993) {Richard Schroeder and Sandra L. Haire} p.8   |
| Biological Report 9  | Thermal Stratification of Dilute Lakes-- Evaluation of Regulatory Process and Biological Effects Before and After Base Addition: Effects on Brook Trout Habitat and Growth (April 1993) {Carl Schofield, Dan Josephson, Chris Keleher, and Steven Gloss} p.36 |
| Biological Report 10 | Zinc Hazards to Fish, Wildlife, and Invertebrates: A Synoptic Review (April 1993) {Ronald Eisler} p.106   |

Biological Report 11

In-water Electric Measurements for  
Evaluating Electrofishing Systems (April  
1993) {A. Lawrence Kolz} p.24

### **Fish and Wildlife Leaflets:**

13.1.15.

Life History and Habitat Needs of the  
Black Brant (1993) {Dirk Derksen and David  
Ward} p.6

13.2.14.

Management of Habitat for Breeding and  
Migrating Shorebirds in the Midwest (1992)  
{Jan Eldridge} p.6

### **Resource Publications:**

191

Evaluating Temperature Regimes for  
Protection of Smallmouth Bass (1993)  
{Carl Armour} p.27

192

Sensitivity of Juvenile Striped Bass to  
Chemicals Used in Aquaculture (1993)  
{Terry Bills, Leif Marking, and George  
Howe} p.11

193

Introduction of Foxes to Alaskan Islands -  
History, Effects on Avifauna, and  
Eradication (1993) {Edgar Bailey} p.53

### **General Interest Publications:**

Backyard Bird Problems

Coping with Diseases at Birdfeeders

## PUBLICATIONS THAT ARE NOW OUT OF PRINT:

The publications below have become obsolete from our stock. We have provided the appropriate source, stock number, and cost if there was one available.

### Biological Reports:

- |           |   |
|-----------|---|
| 79/31     | Classifications of Wetlands in Deep Water Habitat of the United States (December 1979) {Lewis Cowardin, Virginia Carter, Frances Golet, and Edward LaRue} p.131 NTIS # PB 80-168784 \$27.00 |
| 82(10.30) | Habitat Suitability Index Models: Beaver (April 1982) {Arthur Allen} p.20<br>NTIS # PB 84-11447   |
| 82(10.37) | Habitat Suitability Index Models: Black-Crapped Chickadee (September 1983) {Richard Schroeder} p.12<br>NTIS # PB 84-118439  |
| 82(10.43) | Habitat Suitability Index Models: Wood Duck (July 1983) {Patrick Sousa and Adrain Farmer} p.27<br>NTIS # PB 84-131507   |
| 82(10.47) | Habitat Suitability Index Models: Williamson's Sapsucker (Septemeber 1983) {Patrick Sousa} p.13<br>NTIS# PB 84-155597   |
| 82(10.60) | Habitat Suitability Index Models: Rainbow Trout (January 1984) {Robert Raleigh, Terry Hickman, R. Charles Solomon, Patrick Sousa} p.63<br>NTIS# PB 84-196948                                |
| 82(10.66) | Habitat Suitability Index Models: Eastern Cottontail (July 1984) {Arthur Allen} p.23<br>NTIS# PB 85-171643  |
| 82(10.75) | Habitat Suitability Index Models: Spotted Seatrout (September 1984) {Paul Kosteck} p.22<br>NTIS# PB 85-225670   |

- 82(10.83) Habitat Suitability Index Models: Brewer's Sparrow  
(September 1984) {Henry Short} p.16  
NTIS# PB 85-133759
- 82(10.86) Habitat Suitability Index Models: Ruffed Grouse  
(April 1984) {Brian Clark and Patrick Sousa} p.31  
NTIS# PB 85-22506
- 82(10.87) Habitat Suitability Index Models: Belted Kingfisher  
(August 1985) {Bart Proze} p.22 NTIS# PB 86-111465
- 82(10.95) Habitat Suitability Index Models: Redwinged  
Blackbird (May 1985) {Henry Short} p.20  
NTIS# PB 85-236214
- 82(10.98) Habitat Suitability Index Models: Juvenile  
Atlantic Croaker(revised) (June 1985) {Robert Diaz and  
Christopher Onuf} p.23 NTIS# PB 86-113578
- 82(10.99) Habitat Suitability Index Models: Great Blue Heron  
(July 1985) {Henry Short and Robert Diaz}  
p.23 NTIS# PB 86-116977
- 82(10.105) Habitat Suitability Index Models: American  
Woodcock (July 1985) {Brian Cole} p.223  
NTIS# PB 86-117306
- 82(10.106) Habitat Suitability Index Models: Eastern Wild  
Turkey (July 1985) {Richard Schroeder} p.33  
NTIS# PB 86-110616
- 82(10.113) Habitat Suitability Index Models: Spotted Owl  
(September 1985) {Stephen Layman, Hal Salwasser,  
and Reginald Barrett} p.27 NTIS# 86-123163
- 82(10.125) Habitat Suitability Index Models: Slider Turtle  
(September 1985) {Stephen Morale and J. Whitfield  
Gibson} p.14 NTIS# PB 87-113163
- 82(10.130) Habitat Suitability Index Models: Black-Shoulder  
{Craig Faanes and Rebecca Howard} p.13  
NTIS# 87-153748

- 82(10.134) Guidelines for Using the Delphi Technique to Develop Habitat Suitability Index Curves (April 1987) {Johnnie Crance} p.21 NTIS# PB 87-192688
- 82(10.145) Habitat Suitability Index Models: Northern Pintail (September 1987) {Willie Saucy and Stephen Anderson} p.23 NTIS# PB 88-157847
- 82/26 A Guide To Stream Habitat Analysis Using the Instream Flow Incremental Methodology Instream Flow Information Paper No. 12 (June 1984) {Dave D. Bovee} p.248 NTIS# PB 83-131052
- 83/03 Practices for Protecting and Enhancing Fish and Wildlife on Coal Surface-Mined Land in Central and Southern Appalachia (March 1983) {Richard Ambrose, Charles Hinkle, and Calvin Wenzel} p.208
- 83/22 Opportunities to Protect Instream Flows in Texas, Oklahoma, and Arkansas (September 1983) {Michael Mosely} p.102 NTIS# PB 84-128925
- 84/20 Distribution and Abundance of Forest Birds of Guam: Results of the 1981 Survey (September 1984) {John Enhring and Fred Ramsey} p.54 NTIS# PB 85-168987
- 85(1.8) Dioxin Hazards to Fish, Wildlife and Invertebrates: A Synoptic Review (May 1985) {Ronald Eisler} p.37 NTIS# PB 86-173903 \$19.00
- 85(7.1) The Ecology of Irregularly Flooded Salt Marshes of the Northeastern Gulf of Mexico: A Community Profile (December 1984) {Judy Stout} p.98 NTIS# PB 86-126430
- 85(7.11) The Ecology of Southern California Vernal Pools: A Community Profile (May 1987) {Paul Zedler} p.136 NTIS# PB 87-215497
- 85(7.12) The Ecology of Open-Bottoms of Texas: A Community Profile (May 1987) {Neal Armstrong} p.104 NTIS# PB 88-107552

- 85(7.13) The Ecology of Bartaria Basin, Louisiana: A Community Profile (July 1987) {William Conner and John Day} p.165 NTIS# PB 88-128814
- 85/15 Tampa Bay Environmental Atlas Biological and Water Resources/St Petersburg Map A6-B21
- 87/04 Age, Growth, and Mortality of Juvenile Atlantic Salmon in Streams: A Review (September 1987) {Patric Bley} p.25
- 87/06 Opportunities to Protect Instream Flows and Wetlands Uses of Water in New Hampshire and Connecticut (August 1987) {Lynn Carney and Curtis Michael} p.25 NTIS# PB 88-131248
- 87(07) Effects of Prudhoe Bay Reserve Pit Fluids on Water Quality and Macroinvertebrates of Arctic Tundra Ponds in Alaska (September 1987) {Robin West} p.48
- 88(10) Annotated Historical Records of the Bald Eagle from the Northern United States (April 1988) {James Mattson} p.65
- 89(02) Western State Instream Flow Program: A Comparative Assessment Instream Flow Information Paper No. 18 (October 1988) {Matthew McKinney and Jonathan Taylor} p.48 NTIS# 92-151385
- 89(15) Mussell (Bivalvia:Uniondea) of the Cumberland River Review of Life Histories and Ecological Relationships (July 1989) {Mark Gordon and James Layzer} p.99
- 90(14) The Sea Otter (*Enhydra lutris*): Behavior, Ecology, and Natural History (September 1990) {Marianne Reidman and James Estes} p.317

## **Fish and Wildlife Leaflet:**

13.2.2. Innovation and Teamwork in the North American Waterfowl Management Plan (1989) {Kathryn Hohman} p.5

L-14 Publications in Region 8

## **Research Report:**

8 Forest Bird Habitat Suitability Model and the Development of General Habitat Models (1991) {Beatrice Van Horne and John Weins} p.18

## **Resource Publications:**

169 Saltcedar Control for Wildlife Habitat in the Southwest (1988) {Theodore Kerpez and Norman Smith} p.16 NTIS # PB-88-122601 \$17.50

177 Field Manual for Investigation in Fish Control (1990) {Fred Myers and Lee Barclay} p.120 GPO # 024-010-00685

185 Group Decision-Making Techniques for Natural Resource Management Application (1992) {Beth Coughlan and Carl Amour} p.55 NTIS # PB-92-218833 \$19.50

## **Wildlife Research Report**

7 The West Indian Manatee (*Trichechus manatus*) (1977) {Sandra L. Husar} p.17

15 Effects of Soils and Grazing on Breeding Birds of Uncultivated Upland Grassland of the Northern Great Plains (1982) {Harold Kantrud} p.33

## **General Interest Publications:**

Administration of the Marine Mammal Protection Act 1972

CATS of North America GPO# 024-010-00-694-3 \$5.00

Endangered Species Act 1973 (Amended)

ESM Part 104 (Habitat Evaluation Manual)

Field and Stream Jr.

Homes for Birds

In Celebrating of America's Wildlife (video only)

Know Before Go

Know there Black Duck

National Survey of Fishing, Hunting, and Wildlife Associated Recreation 1985

North America Waterfowl Management Plan: Waterfowl for the Future

Partners for Wildlife

Recreational Opportunities on Public Lands

Savory Seafood

Trick to Control Birds

Vanishing Gulf Coastal Wetlands

Wetlands Actions Plan - Meeting the Presidents Challenge

Wetlands, Water, Wildlife, Plants and People (Black & White Edition, Grade Edition, Middle School Edition)

Wetlands - We Need 'Em.. Wildlife Needs 'Em Too

Wildlife Diversity Through Habitat Diversity

**Endangered Species:**

Brown Pelican  
California Condor  
Chesapeake Bat Primer  
Fox Squirrel  
Hummingbirds  
Snowy Egret  
Weasel  
Wetlands

\* The Publications Unit has a new FAX NUMBER (703) 358-2314.

**Reminder:**

**National Technical Information Service (NTIS)**  
**(703) 487-4650 w/ stock number**  
**(703) 487-4780 w/o stock number**

**Government Printing Office (GPO)**  
**(202) 683-3238**