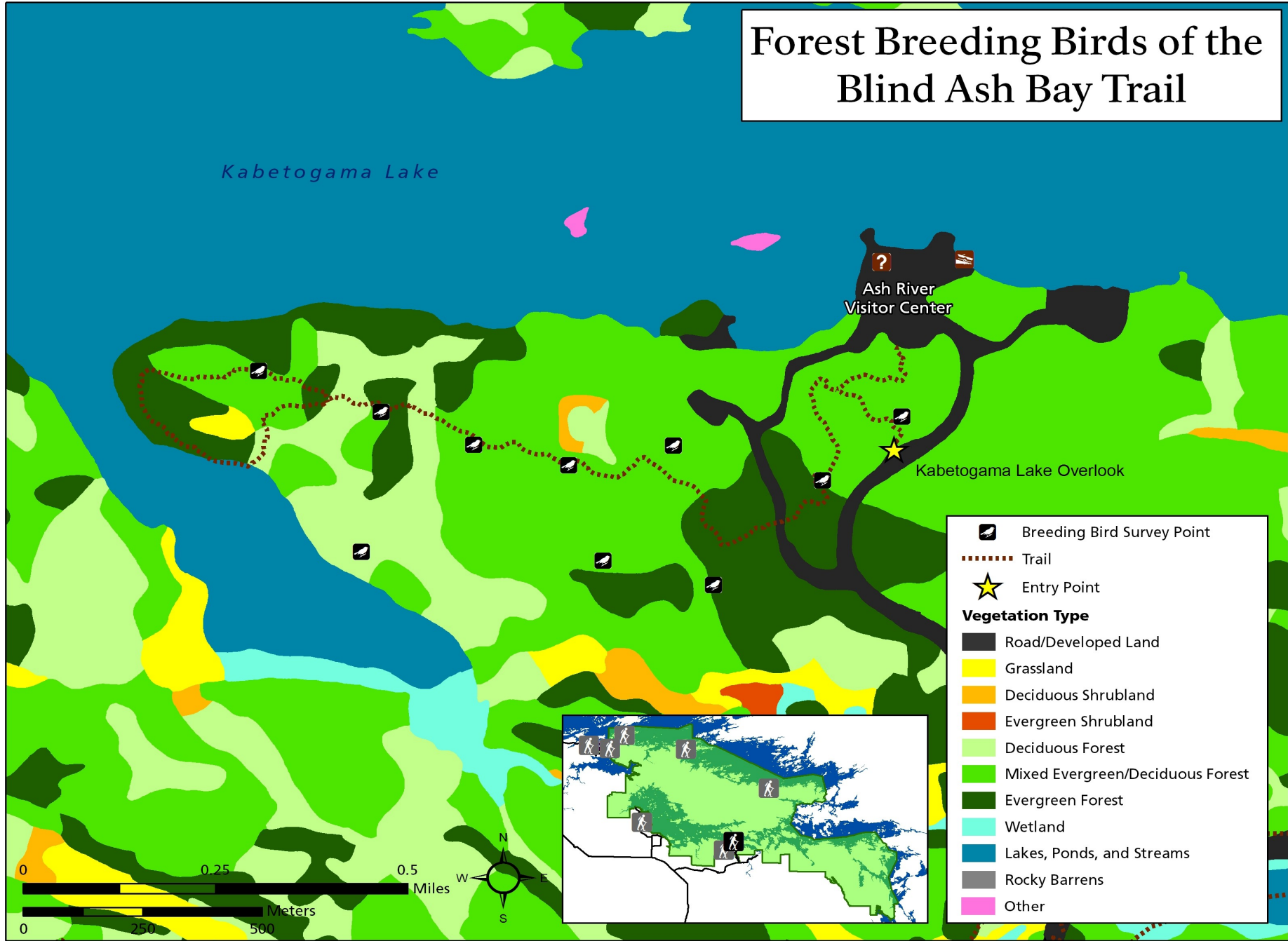


Forest Breeding Birds of the Blind Ash Bay Trail



National Park Service
U.S. Department of the Interior
Voyageurs National Park



Forest Breeding Birds Blind Ash Bay Trail



Blind Ash Bay

The Blind Ash Bay Trail has many birds for viewing – usually in June. The species listed in this brochure have been heard or spotted since 1997.

When hiking this trail visitors should remember the area is covered in vegetation and be prepared for ticks, mosquitoes, and to step in wet areas.

To get to the Blind Ash Bay Trail, visitors can find the trailhead just outside the Ash River Visitor Center.

The Blind Ash Bay Trail originates from the upper parking lot and/or the Kabetogama Lake Overlook near the Ash River Visitor Center. The trail leads west 1.2 miles to a 0.7 mile loop around a peninsula surrounded by Kabetogama Lake on the north and Blind Ash Bay on the south. An overlook on the west end of the loop gives hikers a three mile view down the lake.

Forest cover types in the area are mainly red and white pines interspersed with small areas of rocky woodlands and jack pine stands on the ridges. Aspen, birch, and upland spruce, fir, and aspen stands are distributed on lower uplands. Wetter draws are covered by a lowland hardwood forest.

Species like hermit and Swainson's thrushes, ruby and golden-crowned kinglets, scarlet tanagers, dark-eyed juncos, blue-headed and red-eyed vireos, and red-breasted nuthatches can be clearly visible near the tree tops.

Sixteen warbler species seen on the trail are American redstart, Blackburnian, black and white, black-throated green, chestnut sided, Canada, common yellowthroat, magnolia, morning, Nashville, northern parula, northern water-thrush, ovenbird, pine, Tennessee, and yellow-rumped.

Mature tree stands hold eastern wood pewee, great-crested flycatcher, scarlet tanager, and hairy and pileated woodpeckers. Songs of winter wren and least flycatcher are heard near the ground in wetter areas.



Bird rank indicates their abundance during all years of monitoring on this scale:

- A = abundant to most abundant
- C = common
- U = uncommon
- R = rare to least abundant

Blind Ash Bay Trail Checklist

<u>GROUP</u>	<u>SPECIES NAME</u>	<u>RANK</u>
Loons	○ Common Loon	R
Herons, Bitterns, & Allies	○ Great Blue Heron	R
New World Vultures	○ Turkey Vulture	R
Ducks, Geese, and Swans	○ Canada Goose	R
	○ Mallard	U
Hawks & Eagles	○ Bald Eagle	R
	○ Broad-winged Hawk	U
Partridge, Grouse, and Turkey	○ Ruffed Grouse	R
Gulls & Terns	○ Ring-billed Gull	R
	○ Herring Gull	R
Kingfisher	○ Belted Kingfisher	R
Woodpeckers	○ Downy Woodpecker	R
	○ Hairy Woodpecker	U
	○ Northern Flicker	U
	○ Pileated Woodpecker	U
	○ Red-headed Woodpecker	R
	○ Yellow-bellied Sapsucker	U
Tyrant Flycatcher	○ Alder Flycatcher	R
	○ Eastern Wood Pewee	U
	○ Great-crested Flycatcher	R
	○ Least Flycatcher	C

<u>GROUP</u>	<u>SPECIES NAME</u>	<u>RANK</u>
Vireos	○ Philadelphia Vireo	R
	○ Red-eyed Vireo	A
Jays & Crows	○ American Crow	U
	○ Blue Jay	U
	○ Blue-headed Vireo	U
	○ Common Raven	U
	○ Gray Jay	U
Chickadees	○ Black-capped Chickadee	U
Nuthatches	○ Red-breasted Nuthatch	C
	○ White-breasted Nuthatch	U
Creepers	○ Brown Creeper	U
Wrens	○ Winter Wren	U
Kinglets	○ Golden-crowned Kinglet	U
	○ Ruby-crowned Kinglet	U
Thrushes	○ Veery	C
	○ Swainson's Thrush	R
	○ Hermit Thrush	U
	○ American Robin	C
Wood-Warblers	○ American Redstart	U
	○ Black and White Warbler	U
	○ Blackburnian Warbler	C
	○ Black-throated Blue Warbler	R
	○ Black-throated Green Warbler	U
	○ Canada Warbler	U
	○ Chestnut-sided Warbler	C
	○ Common Yellowthroat	R
	○ Magnolia Warbler	C
	○ Morning Warbler	C
	○ Nashville Warbler	A
	○ Northern Parula	U
	○ Ovenbird	A
	○ Pine Warbler	U
	○ Yellow-rumped Warbler	U

<u>GROUP</u>	<u>SPECIES NAME</u>	<u>RANK</u>
Waxwings	○ Cedar Waxwing	U
Tanagers	○ Scarlet Tanager	U
Sparrows & Allies	○ Chipping Sparrow	C
	○ Song Sparrow	R
	○ Swamp Sparrow	R
	○ White-throated Sparrow	A
Cardinals & Allies	○ Rose-breasted Grosbeak	U
Blackbirds	○ Common Grackle	R
	○ Red-winged Blackbird	R
Finches	○ Evening Grosbeak	U
	○ Purple Finch	R
	○ Red Crossbill	U

