

**WHISKEYTOWN LAKE**  
California

A UNIT OF WHISKEYTOWN-SHASTA-TRINITY NATIONAL RECREATION AREA



Some of the most beautiful scenery in northern California is contained in the area surrounding Whiskeytown Lake, a 1-day drive from San Francisco and Sacramento, Calif., and Portland, Oreg. The lake, formed by the earthfill Whiskeytown Dam across Clear Creek, was constructed by the Bureau of Reclamation, U.S. Department of the Interior. Whiskeytown Lake is a unit of the Whiskeytown-Shasta-Trinity National Recreation Area, which is jointly operated by the National Park Service, also of the U.S. Department of the Interior, and the Forest Service, U.S. Department of Agriculture.

Approaching the lake from either the south or the north, you will get a view of blue waters blended into green hills and dotted with wooded isles. Conifers predominate, especially digger pines, ponderosas, and Douglas-firs. Undergrowth consists of low-growing shrubs, mostly manzanita with its distinctive deep-red bark.

### HIKING AND HORSEBACK RIDING

Land cleared in preparation for the reservoir is gradually returning to its natural condition. However, trails created by work equipment will be kept cleared, as they are excellent for horseback riding and hiking. Sometimes they cross a stream, skirt a cove, or top a rise that offers a fine view of the lake. Some trails lead through the Christmasberry (toyon) and manzanita thickets from one cove to another—and to fishing spots.

### FISHING

Fishing is good—either from a boat or from shore—and is permitted in compliance with State regulations.

In time, natural food chains will become established in the new lake; the microscopic life and aquatic plants, supporting in turn forage fish like the threadfin shad upon which the game fish feed. The California Department of Fish and Game and the Bureau of Sport Fisheries and Wildlife, U.S. Department of the Interior, stock the lake with rainbow trout, brown trout, and largemouth and small-mouth bass.

### HUNTING

Black-tailed deer are the important game animals, although there are seasons on pigeon, quail, rabbit, and even bear. Hunting is permitted in compliance with California regulations. Firearms may not be discharged near any area of concentrated use—including picnic areas, launching ramps, campgrounds, and concessioner facilities.

### WATER SPORTS

With 5 square miles of open water, extensive shoreline, and numerous large and small coves, Whiskeytown Lake is an excellent area for boating (both Federal and State regulations apply), water-skiing, scuba-diving, and swimming. The shallows begin to warm by late May or early June, but the deeper waters remain cold all year.

### CAMPING & PICNICKING

Handy to every beach is a picnic area with tables, fireplaces, and trash cans.

New campsites are being opened and others are planned. A special campfire permit must be obtained to camp outside these designated areas. No fires are permitted on beaches.

### CLIMATE

Temperatures on and around the lake and in bordering woodlands are moderate—ideal for outdoor recreation. Summers are hot, but the air is dry; winters are mild with only occasional light snowfall.

### PETS

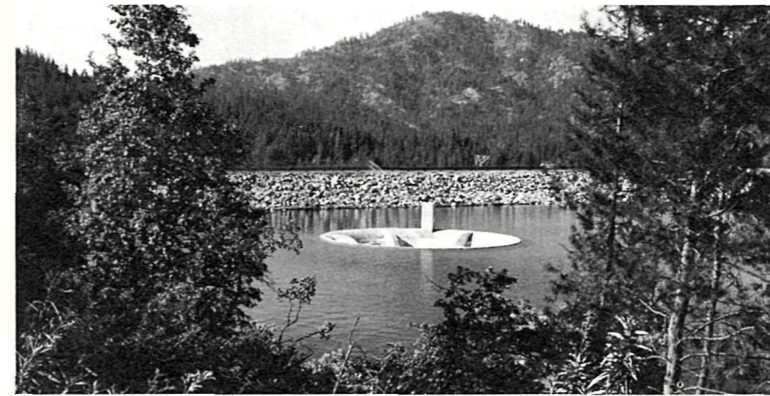
Pets must be kept off beaches entirely, and under physical restraint in campgrounds, near boat landings, and in other areas where visitors concentrate.

### ACCOMMODATIONS

A variety of restaurants and overnight accommodations are available in nearby Redding and vicinity.

### FOOD SERVICES

*Oak Bottom*—restaurant, coffee shop, and snack bar.  
*Brandy Creek*—snack bar; plans call for a restaurant and coffee shop.



### WHISKEYTOWN AND THE CENTRAL VALLEY PROJECT

Whiskeytown Dam and Lake are on Clear Creek, a tributary of the Sacramento River, and are designed to store and regulate imported waters of the Trinity River Division of the Bureau of Reclamation's Central Valley Project. Through this \$255 million network of dams, reservoirs, tunnels, canals, and powerplants, the excess water of the Trinity River is now diverted into California's Central Valley, where it is being put to good use.

After leaving Trinity powerplant, Trinity River water is diverted by Lewiston Dam into Clear Creek Tunnel, which carries it 11 miles through the Hoadley Peaks (whose highest point is almost 5,000 feet). Pipes carrying the water through the mountains and down to Judge Francis J. Carr Powerplant can be seen at the northwest tip of the lake, just off U. S. 299.

From the powerplant the water enters Whiskeytown Lake, where most of the imported water and surplus Clear Creek water is diverted through another tunnel to the Spring Creek Powerplant. Then, flowing into Keswick Reservoir, it joins water released from Shasta Dam and is released through Keswick Powerplant into the Sacramento River to improve navigation, irrigate crops, satisfy municipal and industrial needs, maintain fish life, and help maintain water quality in the river and in the Sacramento-San Joaquin River delta.

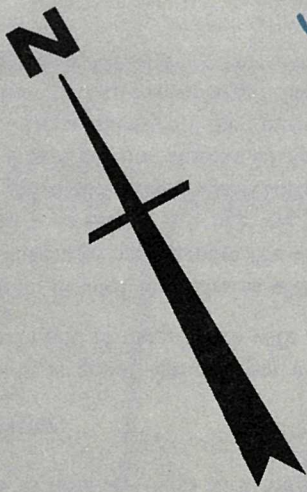
The rest of the water from Whiskeytown Lake is released into Clear Creek through bi-level outlets in Whiskeytown Dam. These outlets, which can blend the lake's warm and cold water to order, were specially constructed by the Bureau of Reclamation to regulate temperature for the maximum benefit of the salmon and steelhead trout which use Clear Creek as their spawning ground.

It is estimated that 90 percent of the total cost of the multiple-purpose Trinity River Division will be repaid to the Federal Government through the sale of water and power.

### NEARBY PLACES TO SEE

The most prominent landmark of the region is 6,209-foot-high Shasta Bally, rising in the midst of rolling woodlands and clear-flowing streams. The mountain lies to the southwest and rises almost 5,000 feet above the level of the lake.





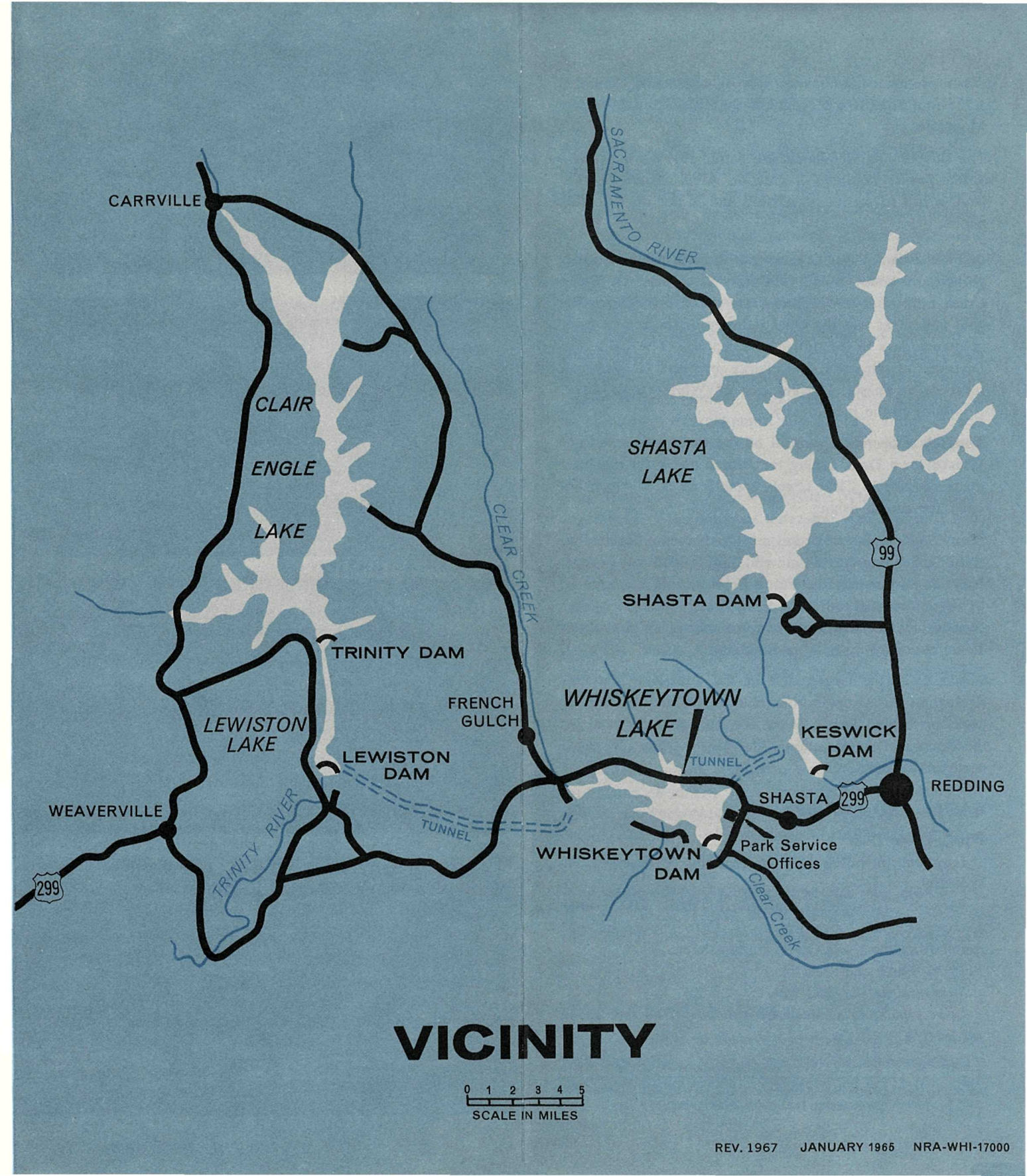
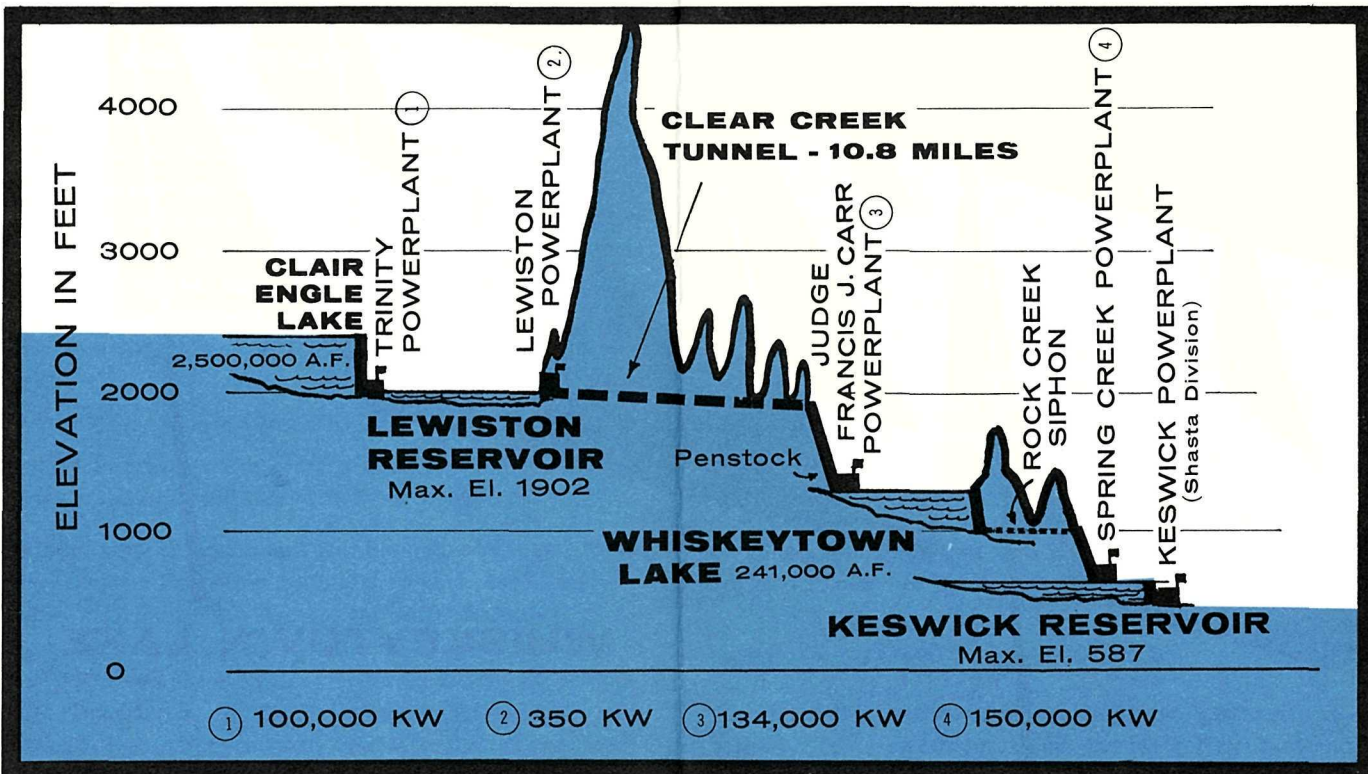
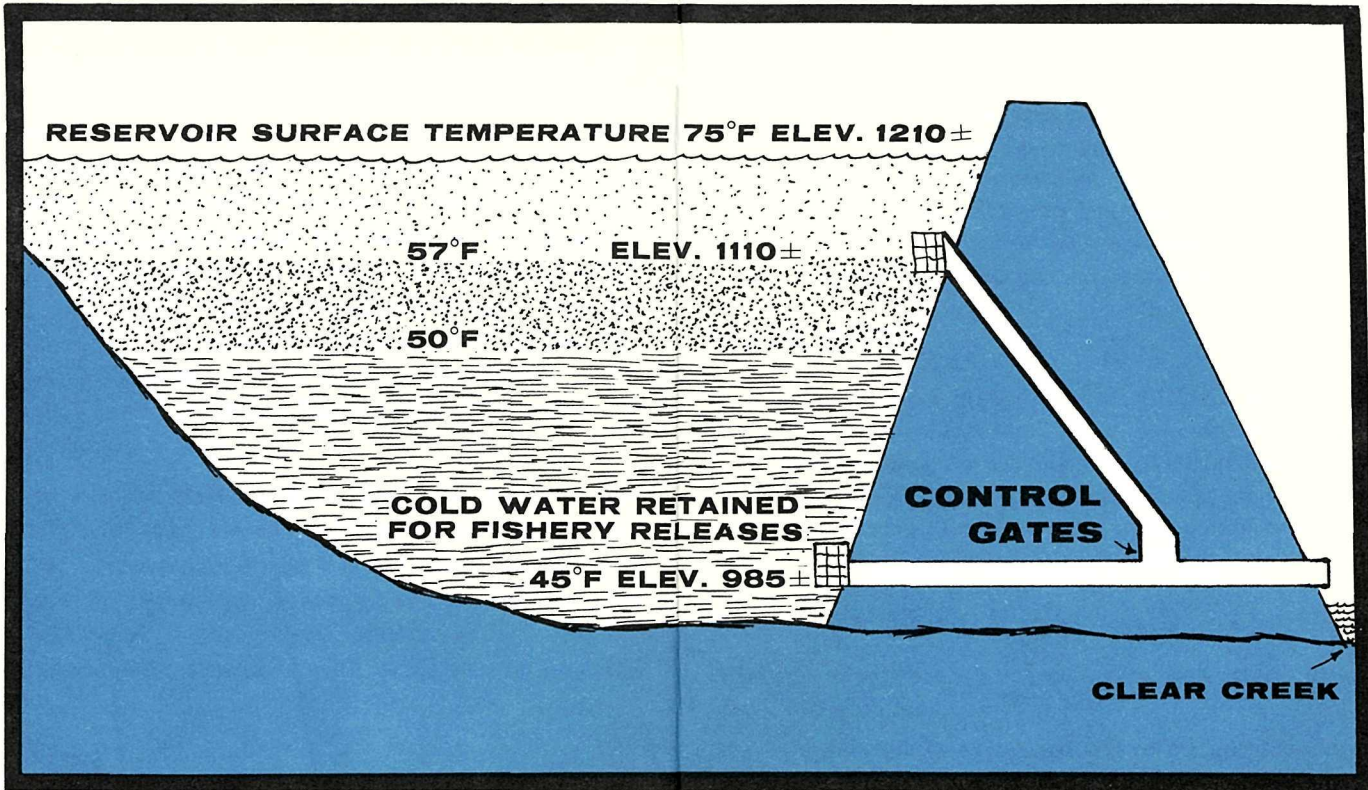
▲ Campground  
 F Food Services  
 R Launching Ramp  
 M Marina  
 P Picnic Area  
 S Swimming

0 ————— 1  
 SCALE IN MILES



# WHISKEYTOWN LAKE







Other prominent landmarks near Whiskeytown Dam are 4,735-foot South Fork Mountain and 2,536-foot Monarch Mountain.

The surrounding woodlands are within the Whiskeytown-Shasta-Trinity National Recreation Area. Much of this land is still in private ownership and is not open to the public.

Below the dam, Clear Creek winds through beautiful steep gorges and rocky hills. Gold was discovered on Clear Creek right after the Mother Lode strike, and mining for gold and silver was the chief industry of the region from gold rush days to the turn of the century. The California Division of Beaches and Parks operates a historical museum at Shasta, 2 miles east of Whiskeytown Lake; it is open to the public daily.

Through temperature control of the water released from Whiskeytown Dam, fishing for salmon and trout has been made possible in Clear Creek, some 5 miles of which are open for public fishing.

*Clair Engle Lake* is a unit of the National Recreation Area. Extending into Shasta and Trinity National Forests, it is administered by the Forest Service, U.S. Department of Agriculture. *Trinity Dam*, built and operated by the Bureau of Reclamation, is northwest of Whiskeytown Lake, about 40 miles from Redding.

*Shasta Lake*, the largest unit of the three-lake National Recreation Area, lies within Shasta National Forest. It backs up behind *Shasta Dam*, also built and operated by the Bureau of Reclamation. The dam is about 10 miles north of Redding.

## FACTS AND FIGURES

### Whiskeytown Dam

*Location.* 8 miles west of Redding, Calif., just off U.S. 299.

*Purpose.* To regulate and divert Trinity River water discharged from Judge Francis J. Carr Powerplant and runoff from the Clear Creek drainage area.

*Type.* Earth and rock fill.

*Structural height.* 282 feet.

*Lowest point in excavated foundation.* 946 feet above sea level.

*Height above streambed.* 272 feet.

*Crest elevation.* 1,228 feet.

*Crest length.* 4,070 feet.

*Maximum base width.* 1,492 feet.

*Volume of embankment.* 4,535,094 cubic yards.

*Glory Hole Spillway.* Maximum discharge capacity is 28,780 cubic feet per second. The overflow crest is 88 feet in diameter, reducing to a 21-foot-diameter tunnel discharging into Clear Creek below the dam.

### Whiskeytown Lake

*Gross storage capacity* (1,210-foot surface elevation). 241,000 acre-feet.

*Active storage capacity.* 214,000 acre-feet.

*Inactive storage capacity* (1,100-foot elevation). 27,000 acre-feet.

*Maximum water surface elevation.* 1,220 feet.

*Normal water surface elevation.* 1,210 feet.

*Area at gross storage capacity.* 3,220 acres.

*Shoreline.* 36 miles.

*Maximum depth.* 264 feet.

## ADMINISTRATION

Recreation at Whiskeytown is administered by the National Park Service, U.S. Department of the Interior.

The National Park System is dedicated to conserving the great natural, historical, and recreational heritage of the United States for the benefit and enjoyment of all the people.

All questions or comments about Whiskeytown Lake should be addressed to the Superintendent, Whiskeytown Unit, Whiskeytown-Shasta-Trinity National Recreation Area, Box 188, Whiskeytown, Calif. 96095.

**THE DEPARTMENT OF THE INTERIOR**—the Nation's principal natural resource agency—bears a special obligation to assure that our expendable resources are conserved, that renewable resources are managed to produce optimum benefits, and that all resources contribute to the progress and prosperity of the United States, now and in the future.



## WHISKEYTOWN LAKE

California

A UNIT OF WHISKEYTOWN-SHASTA-TRINITY NATIONAL RECREATION AREA