

DEPARTMENT OF THE INTERIOR
HUBERT WORK, SECRETARY
NATIONAL PARK SERVICE
STEPHEN T. MATHER, DIRECTOR



RULES AND REGULATIONS

YOSEMITE

NATIONAL PARK

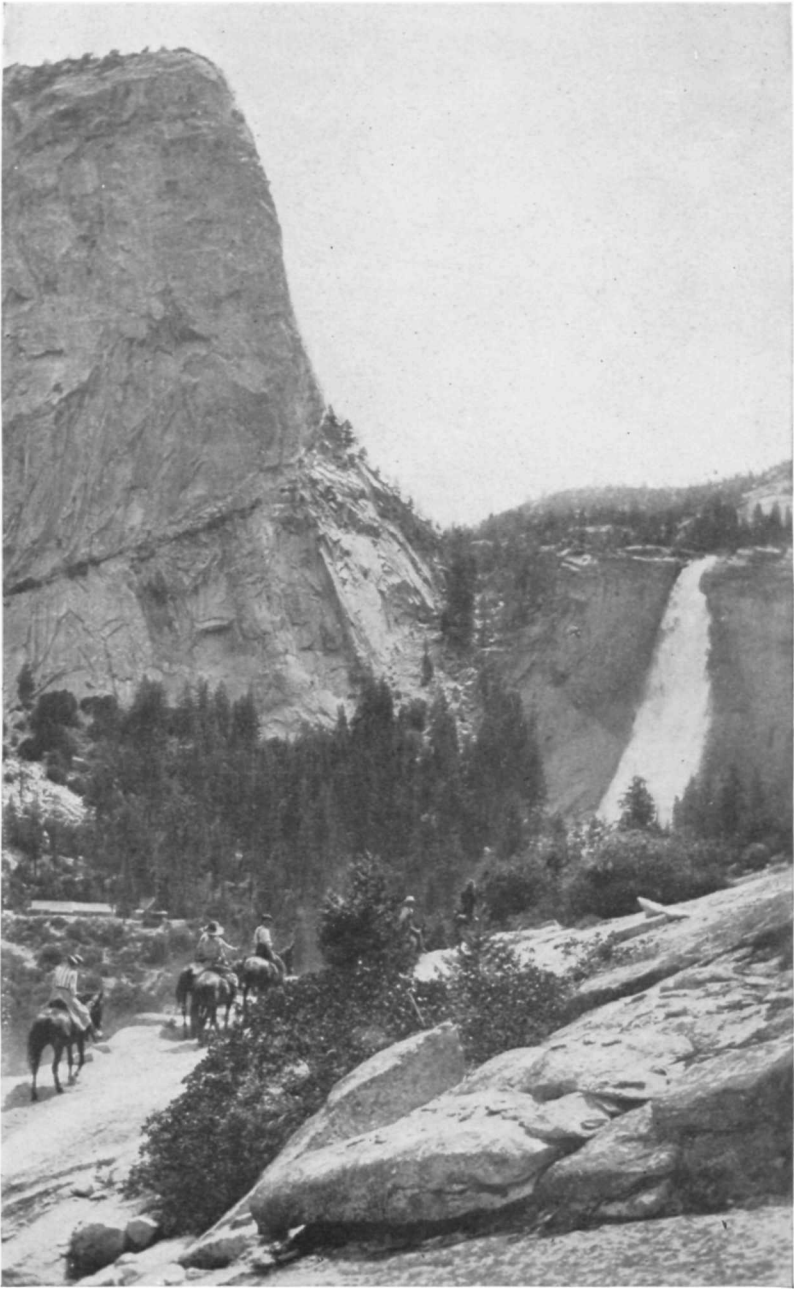
CALIFORNIA



GLACIER POINT LOOKOUT



OPEN ALL THE YEAR



NEVADA FALLS AND CAP OF LIBERTY

CONTENTS.

	Page.
General description.....	1
The valley incomparable.....	3
Yosemite in spring.....	3
Yosemite in summer.....	3
Yosemite in autumn.....	3
Yosemite in winter.....	4
Spectacular waterfalls.....	4
Above the valley's rim.....	5
The Tuolumne River.....	5
The Waterwheel Falls.....	6
The Grand Canyon of the Tuolumne.....	6
Pate Valley.....	7
Hetch Hetchy Valley.....	7
Tuolumne Meadows.....	8
The Northern Canyons.....	8
The Mountain Climax of the Sierra.....	8
Merced and Washburn Lakes.....	9
The big trees.....	9
Living in the Yosemite.....	10
Free Public Camp Grounds.....	10
Free Nature Guide Service.....	11
The Park Museum.....	11
The Le Conte memorial lectures.....	12
Valley facts and figures.....	12
Big tree facts and figures.....	13
Clothing and outfit.....	13
Hiking trips.....	14
Administration.....	14
How to reach the park.....	14
By railroad and motor stage.....	14
Tioga Pass Route—Yosemite—Lake Tahoe.....	15
Detailed information about travel.....	16
By automobile.....	17
The Tioga road.....	17
Miscellaneous routes.....	19
Road sign information.....	19
Public utilities and conveniences.....	20
Distances to principal points of interest.....	23
Fishing in the park.....	29
Rules and regulations.....	35
General regulations.....	35
Automobile and motorcycle regulations.....	40
Maps.....	45
Panoramic view.....	45
Literature.....	45
Government publications.....	45
Bibliography.....	46

	Page.
Other national parks.....	49
Authorized rates for public utilities:	
Hotels, lodges, and camps—	
Yosemite Park & Curry Co.—Hotels, lodges, and camps.....	50
Curry Camping Co.....	54
Automobile transportation to and within the park.....	57
Yosemite Stage & Turnpike Co.....	57
Yosemite Transportation System.....	59
Saddle-horse service.....	68
Independent camping tours.....	70
Walking tours.....	72
Camping in Yosemite Valley.....	73
Housekeeping camp outfits.....	73
Yosemite hospital and medical service.....	76
The National Parks at a Glance.....	78

MAPS AND ILLUSTRATIONS.

COVER.

Glacier Point Lookout.....	Front.
Nevada Falls and Liberty Cap.....	Inside front.
El Capitan in winter.....	Inside back.
White Cascades, Tuolumne Canyon.....	Back.

TEXT.

	Page.
Bird's-eye view of Yosemite Valley, looking eastward to the crest of the Sierra Nevada.....	2
Map showing railroad routes to national parks in California.....	16
Map showing national parks in California with principal connecting automobile highways.....	18
Map of the Yosemite National Park.....	40
Automobile guide map showing roads in the Yosemite Valley.....	43

YOSEMITE NATIONAL PARK.

GENERAL DESCRIPTION.

THE Yosemite National Park is much greater, both in area and beauty, than is generally known. Nearly all Americans who have not explored it consider it identical with the far-famed Yosemite Valley. The fact is that the valley is a very small part, indeed, of this glorious public pleasure ground.

It was established October 1, 1890, but its boundary lines were changed in several important respects in 1905 and 1906. It now has an area of 1,125 square miles, or 719,622 acres.

Little need be said of the Yosemite Valley. After these many years of visitation and exploration it remains incomparable. It is often said that the Sierra contains "many Yosemites," but there is no other of its superabundance of sheer beauty. It has been so celebrated in book and magazine and newspaper that the Three Brothers, El Capitan, Bridalveil Falls, Cathedral Spires, Mirror Lake, Glacier Point, and all the rest are old familiar friends to millions who have never seen them except in picture.

No matter what their expectation, most visitors are delightfully astonished upon entering the Yosemite Valley. The sheer immensity of the precipices on either side of the valley's peaceful floor; the loftiness and the romantic suggestion of the numerous waterfalls; the majesty of the granite walls; and the unreal, almost fairy quality of the ever-varying whole, can not be successfully foretold.

For the rest, the park includes, in John Muir's words, "the headwaters of the Tuolumne and Merced Rivers, two of the most songful streams in the world; innumerable lakes and waterfalls and smooth silky lawns; the noblest forests, the loftiest granite domes, the deepest ice-sculptured canyons, the brightest crystalline pavements, and snowy mountains soaring into the sky twelve and thirteen thousand feet, arrayed in open ranks and spiry pinnacled groups partially separated by tremendous canyons and amphitheaters; gardens on their sunny brows, avalanches thundering down their long white slopes, cataracts roaring gray and foaming in the crooked rugged gorges, and glaciers in their shadowy recesses, working in silence, slowly completing their sculptures; new-born lakes at their feet, blue and green, free or encumbered with drifting icebergs like miniature Arctic Oceans, shining, sparkling, calm as stars."

This land of enchantments is a land of enchanted climate. Its summers are warm, but not too warm; dry, but not too dry; its nights cold and marvelously starry.

Rain seldom falls in the Yosemite between May and October.



Bird's-eye view of Yosemite Valley looking eastward to the crest of the Sierra Nevada.

- | | |
|--|--|
| 1. Clouds Rest. | 18. Merced River. |
| 2. Half Dome. | 19. El Capitan Bridge and Moraine. |
| 3. Mount Watkins. | 20. Big Oak Flat Road. |
| 4. Basket Dome. | 21. Wawona Road. |
| 5. North Dome. | 22. Bridalveil Falls. |
| 6. Washington Column. | 23. Cathedral Rocks. |
| 7. Royal Arches. | 24. Cathedral Spires. |
| 8. Mirror Lake and mouth of Tenaya Canyon. | 25. Sentinel Rock. |
| 9. Camp Curry. | 26. Glacier Point and Glacier Point Hotel. |
| 10. Yosemite Village (old). | 27. Glacier Point Road. |
| 11. Yosemite Village (new). | 28. Sentinel Dome. |
| 12. Sentinel Bridge. | 29. Liberty Cap. |
| 13. Yosemite Lodge. | 30. Mount Broderick. |
| 14. Head of Yosemite Falls. | 31. Little Yosemite Valley. |
| 15. Eagle Peak (the Three Brothers). | 32. Tenaya Lake. |
| 16. El Capitan. | 33. Merced Lake Lodge. |
| 17. Ribbon Falls. | |

THE VALLEY INCOMPARABLE.

After the visitor has recovered from his first shock of astonishment—for it is no less—at the beauty of the valley, inevitably he wonders how nature made it. How did it happen that walls so enormous rose so nearly perpendicular from so level a floor?

It will not lessen wonder to learn that it was water which cut in the solid granite most of this deep valley. Originally the Merced flowed practically at the level of the canyon top. How long it took its waters, enormous in volume then, no doubt, and rushing swiftly down a steep-pitched course, to scrape out this canyon with its tools of sand and rock, no man can guess. And, as it cut the valley, it left the tributary streams sloping ever more sharply from their levels until eventually they poured over brinks as giant waterfalls.

But geologists have determined, by unerring fact, that the river did a large share of the work, and that the great glacier which followed the water ages afterwards mainly broadened the chasm, squaring its corners and steepening its cliffs. It may have increased the depth from 600 feet at the lower end to 1,200 feet at the upper end.

During the uncountable years since the glaciers vanished, erosion has again marvelously used its wonder chisel. With the lessening of the Merced's volume, the effect was no longer to deepen the channel but to amazingly carve and decorate the walls.

YOSEMITE IN SPRING.

Spring in Yosemite is most refreshing and exhilarating. It rarely rains and is seldom even cloudy. The falls are at their best; the azalea bushes, which grow to man's height, blossom forth in flowers exquisite as orchids. The latter part of April or the early part of May the lodges and camps are opened, tents are pitched along the river, and before one knows it summer has arrived.

YOSEMITE IN SUMMER.

This is the season with which visitors are most familiar. This is the vacation period, and Yosemite has an irresistible appeal. There is every form of enjoyment available. One may live in a lodge, where the honk of an automobile is never heard and where a full day's catch of trout is assured from near-by lake or stream; one may live in a hotel where mountain scenery is unsurpassed; or one may live in the valley and enjoy swimming, dancing, tennis, and other forms of entertainment.

YOSEMITE IN AUTUMN.

Autumn is intensified in the Yosemite. The changing leaves make a riot of color. Albert, King of the Belgians, and party spent two days in Yosemite National Park in October, 1919. The King and

Queen and others of the party rode horseback to Glacier Point and stayed overnight, and then motored to the Mariposa Grove of Big Trees. Crown Prince Leopold, accompanied by a park ranger as guide, camped out under the stars in the high country, joining the royal party at the Big Trees. Their enthusiasm for the park at this season was unbounded.

YOSEMITE IN WINTER.

Yosemite winters are mild and balmy, the granite walls inclosing and protecting the valley. Due to the high walls there are two distinct winter climates on opposite sides of the valley, the north side being many degrees warmer than the south side. The first snow flies early in December, transforming the valley into a white fairyland. The sunset paints the cliffs and domes with rosy alpine glow.

One may ride horseback and motor on the valley floor, and skating, tobogganing, sleighing, and other winter sports are increasing in popularity.

John Muir, in describing the ice cone of the Yosemite Falls, writes: "The frozen spray (of the falls) give rise to one of the most interesting winter features of the valley—a cone of ice at the foot of the falls 400 or 500 feet high. * * * When the cone is in the process of formation, growing higher and wider in frosty weather, it looks like a beautiful smooth, pure white hill."

Even Californians have hardly awakened to the fact that at the very gate of their orange orchards is Yosemite Valley, as beautiful in winter as the Alps.

SPECTACULAR WATERFALLS.

The depth to which the valley was scooped is measured roughly by the extraordinary height of the waterfalls which pour over the rim, though it must be remembered that doubtless these, too, may have cut their channels hundreds of feet deeper than their original levels.

The Yosemite Falls, for instance, drop 1,430 feet in one sheer fall, a height equal to nine Niagara Falls piled one on top of the other. The Lower Yosemite Fall, immediately below, has a drop of 320 feet, or two Niagaras more. Vernal Falls has the same height, while Illilouette Falls is 50 feet higher. The Nevada Falls drops 594 feet sheer; the celebrated Bridalveil Falls, 620 feet; while the Ribbon Falls, highest of all, drops 1,612 feet sheer, a straight fall nearly ten times as great as Niagara. Nowhere else in the world may be had a water spectacle such as this.

Similarly the sheer summits. Cathedral Rocks rise 2,591 feet vertically from the valley; El Capitan, 3,604 feet; Sentinel Dome, 4,157 feet; Half Dome, 4,892 feet; Clouds Rest, 5,964 feet.

Among these monsters the Merced sings its winding way.

The falls are at their fullest in May and June while the winter snows are melting. They are still full in July, but after that decrease rapidly in volume. But let it not be supposed that the beauty of the falls depends upon the amount of water that pours over their brinks. It is true that the May rush of water over the Yosemite Falls is even a little appalling, the ground sometimes trembles with it half a mile away, but it is equally true that the spectacle of the Yosemite Falls in late August, when, in specially dry seasons, much of the water reaches the bottom of the upper fall in the form of mist, possesses a filmy grandeur that is not comparable probably with any other sight in the world; the one inspires by sheer bulk and power, the other uplifts by its intangible spirit of beauty.

ABOVE THE VALLEY'S RIM.

The Yosemite Valley occupies 8 square miles out of a total of more than 1,100 square miles in the Yosemite National Park. The park above the rim is less celebrated principally because it is less known. It is less known principally because it was never, until 1915, opened to the public by road. And even now, except for several leading into the valley, there are only two roads above the rim. Of these only one crosses the park from side to side.

This magnificent pleasure land lies on the west slope of the Sierra Nevada Mountains. The crest of the range is its eastern boundary as far south as Mount Lyell. The river's which water it originate in the everlasting snows. A thousand icy streams converge to form them. They flow west through a marvelous sea of peaks, resting by the way in hundreds of snow-bordered lakes, romping through luxuriant valleys, rushing turbulently over rocky heights, swinging in and out of the shadows of mighty mountains.

Glacier Point commands a magnificent view of the High Sierra. Spread before one in panorama are the domes, the pinnacles, the waterfalls, and dominating all, Half Dome, a mythical Indian turned to stone. A few steps from the hotel one looks down into Yosemite Valley, 3,254 feet below, where automobiles are but moving specks, tents white dots, and the Merced River a silver tracery on green velvet. From the little stone lookout, perched on the very rim of the gorge, by means of high-powered binoculars installed for that purpose, one may study the detail of the High Sierra and its flanking ranges, miles distant, through a sweep of 180°, as though they were at his very feet.

It is a land of sunshine; it almost never rains. It is a land of inspiring, often sublime scenery. It is the ideal camping-out ground.

THE TUOLUMNE RIVER.

Rising in snow-clad monster mountains of the northwest, the Tuolumne River follows a tumultuous course, a few miles north of the Tioga Road, westward across the park. As a stream it is next in importance to the Merced. Its Waterwheel Falls are the coming

wonder of scenic America—coming, because the trail that will make them known has only recently been completed. Its Grand Canyon will stand high among America's scenic canyons when it becomes known. Its valley, the Hetch Hetchy, has been a celebrity for some years.

“It is the heart of the high Sierra,” writes John Muir, “8,500 to 9,000 feet above the level of the sea. The gray, picturesque Cathedral Range bounds it on the south; a similar range or spur, the highest peak of which is Mount Conness, on the north; the noble Mounts Dana, Gibbs, Mammoth, Lyell, McClure, and others on the axis of the range on the east; a heavy billowy crowd of glacier-polished rocks and Mount Hoffman on the west. Down through the open, sunny meadow levels of the valley flows the Tuolumne River, fresh, and cool from its many glacial fountains, the highest of which are the glaciers that lie on the north side of Mount Lyell and Mount McClure.”

Of the grand canyon of the Tuolumne, Muir writes: “It is the cascades or sloping falls on the main river that are the crowning glory of the canyon, and these, in volume, extent, and variety, surpass those of any other canyon in the Sierra. The most showy and interesting of them are mostly in the upper part of the canyon above the point of entrance of Cathedral Creek and Hoffman Creek. For miles the river is one wild, exulting, on-rushing mass of snowy purple bloom, spreading over glacial waves of granite without any definite channel, gliding in magnificent silver plumes, dashing and foaming through huge boulder dams, leaping high in the air in wheellike whirls, displaying glorious enthusiasm, tossing from side to side, doubling, glinting, singing in exuberance of mountain energy.”

THE WATERWHEEL FALLS.

Muir's “wheellike whirls” undoubtedly mean the soon-to-be-celebrated Waterwheel Falls. Rushing down the canyon's slanting granites under great headway, the river encounters shelves of rock projecting from its bottom. From these are thrown up enormous arcs of solid water high in air. Some of the waterwheels rise 20 feet and span 50 feet in the arc.

The spectacle is extraordinary in character and quite unequaled in beauty. Nevertheless, before the trail was built so difficult was the going that probably only a few hundred persons all told had ever seen these waterwheels.

THE GRAND CANYON OF THE TUOLUMNE.

Below the waterwheels the Tuolumne Canyon descends abruptly, the river plunging madly through the mile-deep gorge. Though until now impassable except to knapsackers, trails recently built

down the canyon from the Waterwheel Falls and up from Pate Valley penetrate the very heart of the gorge. The Muir Gorge, a half mile of deep vertical-walled cleft in the canyon bottom, is as a result but two hours below Waterwheel Falls and the same above Pate Valley by the new trails. These two trails will shortly be connected, thereby enabling the visitor to traverse the entire canyon with ease.

PATE VALLEY.

A few miles farther westward the granite heights slope back more gently and the river suddenly pauses in its tumultuous course to meander through the pines and oaks and cedars of a meadowed flat. Pate Valley has been known for years from the vague reports of venturesome knapsackers, but now it is made accessible by one of the best trails in the park.

An unnatural smoky blackening of the overhanging cornices of the 200-foot walls almost surrounding the glade leads one to approach them, and there, near the ground, are hundreds of Indian pictographs. These are mysterious, fantastic, and unreadable, but the deep red stain is as clearly defined as on the day that the red man set down tales of his great hunt or of famine or of war, or perhaps of his gods. Here, too, obsidian chips tell the story of preparation for war and the chase, and sharp eyes are rewarded by the sight of many a perfect spear point or arrowhead.

Atop a huge shaded talus block are many bowl-shaped holes, a primitive grist mill where once the squaws ground acorns for their "boulate," which was the staff of life for so many California tribes. Blackened cooking rocks may be found, and numerous stone pestles lying about in this and two or three similar places seem to point to a hurried departure, but the "when" and "why" of this exodus will ever remain a mystery.

HETCH HETCHY VALLEY.

Seven miles below Pate Valley the Grand Canyon of the Tuolumne enters Hetch Hetchy Valley, which cradles a man-made lake stretching back 7 miles from the 300-foot dam constructed across its lower end to provide drinking water and power for the city of San Francisco. The great cliffs rising sheer from the surface of the water and the waterfalls pouring silvery streams into the reservoir should prove an attraction to those not familiar with the former natural beauty of the valley. One can motor from Yosemite to Mather Station and thence on the Hetch Hetchy Railroad to the dam and reservoir, the round trip from the valley taking the greater part of one day.

TUOLUMNE MEADOWS.

Since Muir so charmingly told of the wonders of the High Sierra, the upper Tuolumne region has become the most famous highland camp in the mountains. Visited at first by a few parties of venturesome mountaineers, then by the larger summer camps of the Sierra Club, the Tuolumne Meadows were finally made accessible from both east and west by the reopening of the Tioga Road, and now hundreds of camps may be seen there throughout the season. As a base camp this section can not be excelled, offering as it does short trips to Alpine summits, hidden glacial lakes, well stocked fishing streams, and into the Grand Canyon of the Tuolumne with its Waterwheel Falls.

THE NORTHERN CANYONS.

North of the Tuolumne River is an enormous area of lakes and valleys which are seldom visited, notwithstanding that it is fairly penetrated by trails. It is a wilderness of wonderful charm and deserves to harbor a thousand camps. The trouting in many of these waters is unsurpassed.

Though unknown to people generally, this superb Yosemite country north of the valley has been the haunt for many years of the confirmed mountain lovers of the Pacific coast. It has been the favorite resort of the Sierra Club for 15 years of summer outings. The fishing is exceptionally fine.

THE MOUNTAIN CLIMAX OF THE SIERRA.

The monster mountain mass of which Mount Lyell is the chief lies on the southwest boundary of the park. It may be reached by trail from Tuolumne Meadows and is well worth the journey. It is the climax of the Sierra in this neighborhood.

The traveler swings from the Tuolumne Meadows around Johnston Peak to Lyell Fork, and turns southward up its valley. Rafferty Peak and Parsons Peak rear gray heads on the right, and huge Kuna Crest borders the trail's left side for miles. At the head of the valley, beyond several immense granite shelves, rears the mighty group, Mount Lyell in the center, supported on the north by McClure Mountain and on the south by Rodgers Peak.

The way up is through a vast basin of tumbled granite, encircled at its climax by a titanic rampart of nine sharp, glistening peaks and hundreds of spearlike points, the whole cloaked in enormous, sweeping shrouds of snow. Presently the granite spurs inclose you. And presently, beyond these, looms a mighty wall of glistening granite which apparently forbids further approach to the mountain's shrine. But another half hour brings you face to face with Lyell's rugged top and shining glaciers, one of the noblest high places in America.

MERCED AND WASHBURN LAKES.

The waters from the western slopes of Lyell and McClure find their way, through many streams and many lakelets of splendid beauty, into two lakes which are the headwaters of the famous Merced River. The upper of these is Washburn Lake, cradled in bare heights and celebrated for its fishing. This is the formal source of the Merced. Several miles below the river rests again in beautiful Merced Lake.

There is an excellent lodge at the head of Merced Lake, and a fine trail to the Yosemite Valley which crosses glacier-polished slopes. There is unusual fishing. It is really the wilderness.

THE BIG TREES.

The greatest grove of giant sequoia trees outside of the Sequoia National Park is found in the extreme south of the Yosemite National Park. It is called the Mariposa Grove. Most persons who have seen sequoia trees have seen them here. It is reached from the Wawona Road, which enters the park from the south. To see this grove requires a day's trip from the Yosemite Valley and back.

Some of these are among the largest and the oldest living sequoia trees.

"A tree that has lived 500 years," writes Ellsworth Huntington in Harper's Magazine, "is still in its early youth; one that has rounded out a thousand summers and winters is only in full maturity; and old age, the threescore years and ten of the sequoias, does not come for 17 or 18 centuries. How old the oldest trees may be is not yet certain, but I have counted the rings of 79 that were over 2,000 years of age, of 3 that were over 3,000, and of 1 that was 3,150. In the days of the Trojan War and of the exodus of the Hebrews from Egypt this oldest tree was a sturdy sapling with stiff, prickly foliage like that of a cedar, but far more compressed."

The monster tree of the Mariposa Grove is the Grizzly Giant, whose girth is 93 feet, whose diameter is 29.6 feet, and whose height is 204 feet. It is probably a little short of 4,000 years old. Sawed into inch boards, this tree would box the greatest steamship ever built and put a lid on the box. If its trunk were cut through, a wagon and two street cars could drive through side by side and still leave the sides strong enough to support the tree. There is no way in which one can really appreciate its size and majesty except by looking upon it.

It is the third largest tree in the world. The largest and oldest is the General Sherman tree in the Sequoia National Park, whose height is 280 feet and whose diameter is 36.5 feet. The second largest is the General Grant tree, in the General Grant National Park, whose height is 264 feet and whose diameter is 35 feet.

Other trees in the Mariposa Grove, which have become more or less celebrated individually, are the Washington tree, whose diameter is only 3 inches less than that of the Grizzly Giant; the Columbia tree, whose height is 294 feet; and the Wawona tree, through whose trunk runs an automobile road 26 feet wide.

There are two other sequoia groves in the Yosemite National Park—the Merced and the Tuolumne.

LIVING IN THE YOSEMITE.

Naturally, the Yosemite Valley is the tourist center. It is there that the roads converge. There is located a hotel and the two large hotel camps. There will be found free public camp grounds, within easy reach of the stores.

From the valley automobile lines go to the Mariposa Grove, to Glacier Point, over the Big Oak Flat Road to Hetch Hetchy Valley, including a stop at Hetch Hetchy Lodge, and over the Tioga Road to Lake Tahoe, including a stop at Soda Springs Lodge. From the valley radiate the trails which horseback riders and hikers travel to every part of the park. The Yosemite Valley is the northern terminus of the John Muir trail, which California has built southward along the crest of the Sierra in honor of her famous man of letters.

Living in the Yosemite is extremely comfortable. The hotel camps are fitted with good beds. The board is good. The hotel camps have swimming pools. There are evening entertainments for those who want them. One can hear lectures. One can dance. One can play tennis. And one can spend unforgettable days wandering on the floor of the wonderful valley.

Outside of the valley there is also comfortable provision for living. Upon Glacier Point, 3,000 feet above the valley floor—on one of the world's supremely scenic spots—is a hotel of beauty and great comfort, and at outlying points reached by trail and sometimes by road are lodges equipped even with hot and cold shower baths.

FREE PUBLIC CAMP GROUNDS.

The National Park Service maintains extensive camping grounds in Yosemite Valley for the use of which no charge is made. These areas are provided with necessary sanitary conveniences and for the most part with running water. The grounds are policed daily during the camping season and all litter and waste removed.

The public is requested to cooperate with the park force in keeping the camp grounds clean and presentable. Campers desiring to use them should register at the superintendent's office where they will be assigned space. Once assigned to space campers should not

change without advising the superintendent's office and securing a new assignment.

Campers may either bring their own camp equipment or they may rent same from the Yosemite Park & Curry Co., at their house-keeping department headquarters in camp 17.

Campers are free to utilize dead or fallen timber for fuel, or fuel may be purchased at the Government warehouse.

FREE NATURE GUIDE SERVICE.

To meet a demand for authentic information concerning the natural history of the park, a Free Nature Guide Service was established during the season of 1920 by the National Park Service in cooperation with the California State Fish and Game Commission.

On account of the hearty response with which this service was met by the public the National Park Service will continue the service during the season of 1925. Illustrated lectures will be delivered at the various camps and trips afield will be conducted. Field trips will be designed to bring to each participant the ability to recognize and name the various birds, plants, trees, and other wild things encountered along the trail. Special excursions for children will be arranged. Parties planning week-end or longer trips will also be able to secure a nature guide by making application to the office of the superintendent.

Resident naturalists with regularly established office hours in the museum will be at the service of the public to answer questions and to instruct people regarding the wonders of the outdoors.

THE PARK MUSEUM.

The Park Museum, just completed as a result of a substantial donation from the Laura Spelman Rockefeller Memorial, is a spacious and appropriately designed building in which are housed a large number of exhibits loaned or contributed by park enthusiasts. These exhibits include Indian baskets and other specimens of native Indian industry, natural history specimens, local flowers and woods, and geological collections and objects of historical interest in connection with the discovery and development of the park.

The museum also contains a library well supplied with scientific and historical books and periodicals, all of which are available to visitors.

The museum is in charge of the park naturalist, who is on duty at fixed hours to give information on all subjects of natural history and science as applied to the Yosemite region.

THE LE CONTE MEMORIAL LECTURES.

The Le Conte memorial lectures instituted in the summer of 1919 by the University of California, through its university extension division, in honor of Joseph Le Conte, the celebrated scientist and naturalist who was professor of geology and natural history at the University of California from 1869 to 1901, will be continued during the summer of 1925.

Specialists in biology, zoology, botany, geology, folklore, and other scientific subjects exemplified in Yosemite will deliver lectures in popular language.

Admission to the lectures will be free. They will be under the personal direction of a member of the university extension staff of the University of California, who will be in the park throughout the course. Lists of speakers, subjects, and dates can be obtained from the superintendent of the park or from the extension division, University of California, Berkeley, Calif.

VALLEY FACTS AND FIGURES.

The Yosemite Valley was discovered in 1851 as an incidental result of the effort to settle Indian problems which had arisen in that region. Dr. L. H. Bunnell, a member of the expedition, suggested the appropriateness of naming it after the aborigines who dwelt there. It rapidly became celebrated. The first house, afterwards known as Black's Hotel, was built in 1855. The valley is 7 miles long. Its floor averages 1 mile in width, its walls rising from 3,000 to 4,000 feet. These tables are interesting:

Altitude of summits in Yosemite Valley.

Name.	Altitude above sea level.	Altitude above pier near Sentinel Hotel.	Name.	Altitude above sea level.	Altitude above pier near Sentinel Hotel.
	<i>Feet.</i>	<i>Feet.</i>		<i>Feet.</i>	<i>Feet.</i>
Artist Point.....	4,701	739	Liberty Cap.....	7,072	3,112
Basket Dome.....	7,602	3,642	North Dome.....	7,531	3,571
Cathedral Rocks.....	6,551	2,591	Old Inspiration Point.....	6,603	2,643
Cathedral Spires.....	6,114	2,154	Panorama Point.....	6,224	2,264
Clouds Rest.....	9,930	5,964	Profile Cliff.....	7,503	3,543
Columbia Rock.....	5,031	1,071	Pulpit Rock.....	4,195	765
Eagle Peak.....	7,773	3,813	Sentinel Dome.....	8,117	4,157
El Capitan.....	7,564	3,604	Stanford Point.....	6,659	2,699
Glacier Point.....	7,214	3,254	Washington Column.....	5,912	1,952
Half Dome.....	8,852	4,892	Yosemite Point.....	6,935	2,975
Leaning Tower.....	5,863	1,903			

Height of waterfalls in Yosemite Valley.

Name.	Height of fall.	Altitude of crest.		Name.	Height of fall.	Altitude of crest.	
		Above sea level.	Above pier near Sentinel Hotel.			Above sea level.	Above pier near Sentinel Hotel.
Yosemite Falls.....	Feet. 1,430	Feet. 6,525	Feet. 2,565	Illilouette Falls.....	Feet. 370	Feet. 5,816	Feet. 1,856
Lower Yosemite Falls..	320	4,420	460	Bridalveil Falls.....	620	4,787	827
Nevada Falls.....	594	5,907	1,947	Ribbon Falls.....	1,612	7,008	3,048
Vernal Falls.....	317	5,044	1,084	Widows Tears Falls....	1,170	6,466	2,506

BIG TREE FACTS AND FIGURES.

There are three groves of big trees (*Sequoia washingtoniana*) in the Yosemite Park, the Merced and Tuolumne Groves northwest of Yosemite Valley, and the Mariposa Grove on the southern edge of the park.

Size of big trees in Mariposa Grove.

[All dimensions are in feet.]

Trees.	Girth at base.	Approximate diameter at base.	Girth about 10 feet above ground.	Approximate diameter about 10 feet above ground.	Height.
Grizzly Giant.....	93	29.6	64.5	20.5	204
Faithful Couple.....	94	29.9	63	20	244
Michigan.....	55.5	17.7	40	12.7	257
Fresno.....	63	20	38.5	12.2	273
Columbia.....	80.5	25.6	52	16.5	294
Old Guard (South Tree).....	45	14.3	31	9.9	244
Lafayette.....	92.5	29.4	53	16.9	273
Nevada.....	48.5	15.4	35	11.1	278
General Sherman.....	63	20	41.5	13.2	267
General Grant.....	67	21.3	42	13.4	271
General Sheridan.....	76	24.2	51	16.2	263
Philadelphia.....	61.5	19.6	50.5	16.1	275
St. Louis.....	73	23.2	51	16.2	269
Lincoln.....	72	22.9	54.5	17.3	258
Washington.....	92	29.3	65	20.7	235
William McKinley.....	70	22.3	46.5	14.8	243
General Logan.....	76	24.2	49.5	15.7	259
Galen Clark.....	59.5	18.9	47	14.9	238
Pittsburgh.....	53.5	17	41	13	242
Vermont.....	47	14.9	38	12.1	257
Wawona (26 feet through opening).....			60.5	19.2	227
New York.....	52	16.5	45.5	14.5	237
Forest Queen.....	53.5	17	38	12.1	219
Boston.....	58	18.4	47	14.9	248
Chicago.....	57	18.1	40.5	12.9	223
Whittier.....	62	19.7	47	14.9	268
Longfellow.....	51.5	16.4	43	13.7	273
Capt. A. E. Wood.....	52	16.5	40	12.7	310
Mark Twain.....	53	16.9	41	13	331
Mississippi.....	54.5	17.3	37.5	11.9	269
Stonewall Jackson.....	53	16.9	38.5	12.2	265
Georgia.....	48	15.3	35	11.1	270
South Carolina.....	74	23.5	54.5	17.3	264

CLOTHING AND OUTFIT.

Reasonably warm clothing should be worn, and persons should be prepared for sudden changes of weather and altitude. Good everyday clothes, golf or bicycle suits, are suitable for both men and

women for park travel. Wearing apparel, dry goods, boots, shoes, etc., may be procured at reasonable rates at the general store on the floor of the valley. Serviceable gloves and tinted glasses should form a part of one's outfit.

HIKING TRIPS.

With more than 600 miles of well-defined trails radiating from Yosemite Valley to all sections of the park, and with, for the most part, camps, lodges, or hotels situated within an easy day's walking distance from each other, conditions in Yosemite are particularly adapted to hiking trips. The hiker may go "light," depending upon the hotels and lodges for accommodations, or he may pack his entire outfit either on his back or upon a pack animal and thereby be entirely independent.

ADMINISTRATION.

The representative of the National Park Service in immediate charge of Yosemite National Park is the superintendent, Mr. W. B. Lewis, whose office is located in the Administration Building in the new village. A force of rangers assists this officer in protecting the reservation. Yosemite Valley is open to visitors the year round and is always beautiful. The address of the superintendent is Yosemite National Park, Calif. General information may be obtained from him, and all complaints should be addressed to him.

Exclusive jurisdiction over Yosemite National Park was ceded to the United States by act of the California Legislature, dated April 15, 1919, and accepted by Congress by act approved June 2, 1920 (41 Stat., 731). Mr. Herman H. Hoss is United States commissioner for the park. His address is Yosemite National Park, Calif.

HOW TO REACH THE PARK.

BY RAILROAD AND AUTO STAGE.

The park is reached from Merced, Calif., on the Atchison, Topeka & Santa Fe and the Southern Pacific lines, thence by Yosemite Valley Railroad to El Portal, near the western boundary of the park. From El Portal the auto stages of the Yosemite Park & Curry Co. operate into the valley. This service is available the year round.

The park is also reached from Merced by automobile stage to Mariposa and Wawona, thence to Mariposa Grove of Big Trees and the Yosemite Valley. The Yosemite Stage & Turnpike Co. operates this line.

Tickets may be procured covering a trip to Yosemite Valley, going in via El Portal (Yosemite Valley Railroad, Merced to El Portal), thence to the valley by auto stages of the Yosemite Park & Curry Co.

and returning via Wawona and Mariposa Big Trees to Merced by auto stages of the Yosemite Stage & Turnpike Co., or the trip may be made in reverse direction. This service is available from May 1 to October 15.

The park is reached from Stockton, Calif., on the Atchison, Topeka & Santa Fe, the Southern Pacific, and the Western Pacific lines, thence by automobile stage over the Big Oak Flat Road via the "Bret Harte" line via Hetch Hetchy and Carl Inn. The "Bret Harte" line is operated as an interconnection between the Yosemite Transportation System and the Yosemite Transit, and the service is available from June 1 to October 1.

The park is also reached from Oakdale, Calif., on the Atchison, Topeka & Santa Fe and Southern Pacific lines, thence by way of the Sierra Railway and the Hetch Hetchy Railway to Mather Station, where is located the Hetch Hetchy Lodge. From Mather Station, Yosemite Valley is reached by auto stages of the Yosemite Park & Curry Co. This stage service is available from June 1 to October 1.

During the summer season round-trip excursion tickets at reduced fares are sold at certain stations in California to Yosemite National Park as a destination, covering the above routes. Holders of round-trip and one-way tickets to other destinations wishing to visit Yosemite National Park as a side trip will find stop-over privileges available. Storage charges on baggage checked to certain railroad termini only will be waived for actual length of time consumed by passengers in making park side trips.

TIAGA PASS ROUTE—YOSEMITE—LAKE TAHOE.

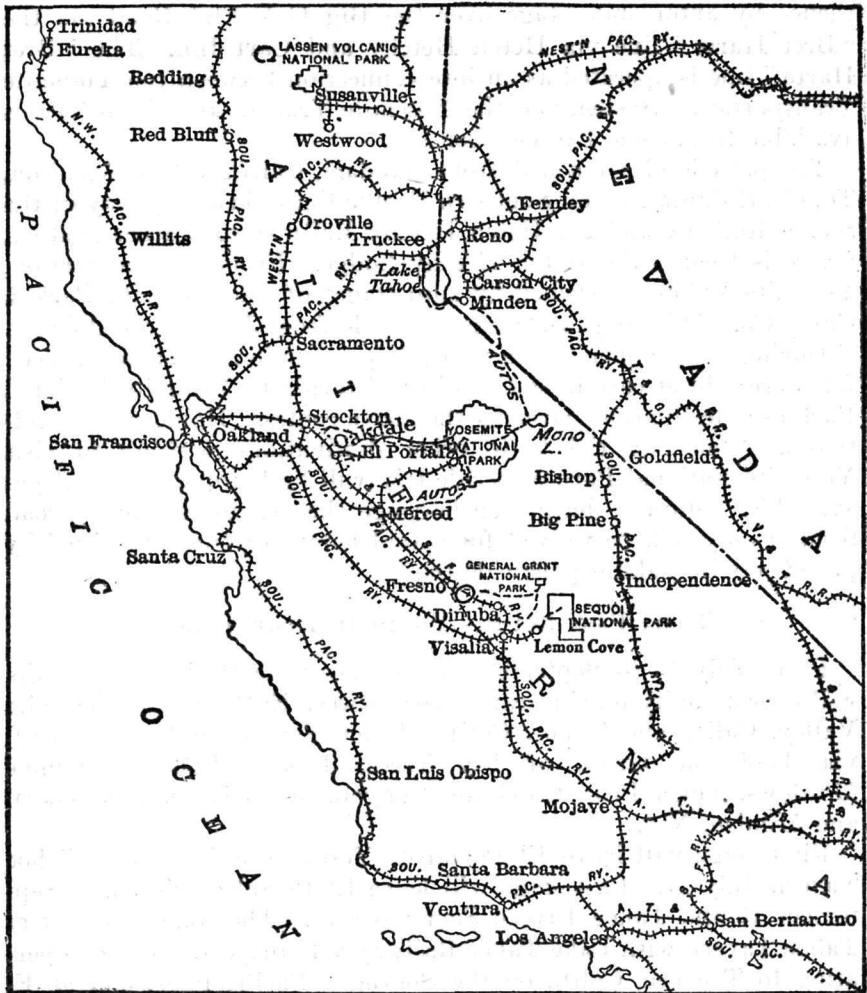
From July 15 to September 15 the Yosemite Park & Curry Co. will operate daily touring-car stages between El Portal and Yosemite Valley, Calif., and Tahoe, Calif. (Tahoe Tavern on Lake Tahoe), via Tuolumne Grove of Big Trees, Tenaya Lake, Tuolumne Meadows, Tioga Pass, Leevining Canyon, Mono Lake, Bridgeport, and Minden, Nev.

First stage will leave El Portal or Yosemite July 15 and Tahoe Tavern July 17. Last stage will leave El Portal or Yosemite September 15 and Tahoe Tavern September 17. The stages connect at Tahoe Tavern with Lake Tahoe Railway & Transportation Co., operating to Truckee, Calif., on the Southern Pacific lines, and at El Portal, Calif., with the Yosemite Valley Railroad, operating to Merced, Calif.

Passengers holding summer excursion tickets reading between Ogden, Utah, and San Francisco may use same from Ogden to Truckee and from Lathrop, Calif., to San Francisco, or the reverse, paying for detour transportation between Truckee and Lathrop, via Lake Tahoe, "The Tioga Route," Yosemite, or El Portal and Merced.

DETAILED INFORMATION ABOUT TRAVEL.

Rates for automobile transportation to the park as well as rates for automobile transportation within the park and rates for accommodations will be found beginning on page 50 under "Authorized rates for public utilities, season 1925."



RAILROAD ROUTES TO NATIONAL PARKS IN CALIFORNIA.

For further information regarding railroad fares, service, etc., apply to railroad ticket agents or address J. H. R. Parsons, passenger traffic manager, Southern Pacific lines, San Francisco, Calif., or W. J. Black, passenger traffic manager, Atchison, Topeka & Santa Fe Railway, Chicago, Ill. Information will also be supplied on application to Robert T. Williams, traffic manager, Yosemite Trans-

portation System, Yosemite National Park, Calif., W. L. White, general manager, Yosemite Valley Railroad Co., Merced, Calif., E. T. Huffman, manager, Yosemite Stage & Turnpike Co., Miami Lodge, Calif., or R. R. Young, general manager, Yosemite Transit, Stockton, Calif.

BY AUTOMOBILE.

THE TIOGA ROAD.

From east to west across the mountain-top paradise winds the Tioga Road, connecting on the west with the main road system of California and crossing the Sierra on the east through Tioga Pass. The road has a romantic history. It was built by Chinese labor in 1881 to a gold mine east of the park, but as the mine did not pay the expenses of getting out the ore it was quickly abandoned and soon became impassable. In 1915 a group of public-spirited citizens purchased it from the present owners of the old mining property and presented it to the Government. It has been placed again in good repair.

When a young man, Mark Twain visited Mono Lake on the Tioga Road. Following is his own inimitable description from "Roughing It":

"Mono Lake is a hundred miles in a straight line from the ocean—and between it and the ocean are one or two ranges of mountains—yet thousands of sea gulls go there every season to lay their eggs and rear their young. One would as soon expect to find sea gulls in Kansas. And in this connection let us observe another instance of nature's wisdom. The islands in the lake being merely huge masses of lava, coated over with ashes and pumice stone, and utterly innocent of vegetation or anything that would burn; and sea gulls' eggs being entirely useless to anybody unless they be cooked, nature has provided an unfailing spring of boiling water on the largest island, and you can put your eggs in there, and in four minutes you can boil them as hard as any statement I have made during the past 15 years. Within 10 feet of the boiling spring is a spring of pure cold water, sweet and wholesome. So in that island you get your board and washing free of charge—and if nature had gone further and furnished a nice American hotel clerk, who was crusty and disobliging, and didn't know anything about the time-tables, or the railroad routes—or—anything—and was proud of it—I would not wish for a more desirable boarding house."

The Tioga Road forms a link in the increasingly popular route between Lake Tahoe and Yosemite. The distance from Yosemite Valley to the southern end of Lake Tahoe by auto road is 206 miles via Gardnerville, Minden, and the Kingsbury Grade, 225 miles via Carson City and the Kings Canyon Road, and about the same distance via Gardnerville and Myers. An additional 20-mile run from the lower end of the Lake takes the motorist to Tahoe Tavern, while other Tahoe resorts may be reached by shorter drives of various dis-

tances. The scenery along the route varies from the rugged broken high Sierra type along the Tioga Road, 46 miles of which lies within the boundaries of the Yosemite National Park, and reaches at Tioga Pass the Eastern Park Boundary, an elevation of 9,941 feet above the sea, to that of the semiarid regions around Mono Lake, Bridgeport, and the Carson River Valley in Nevada and that of the rolling timbered mountains surrounding Lake Tahoe. Motorists from Central



California points traveling to Lake Tahoe via Placerville or Emigrant Gap may complete the circuit by going over the above-described route in the reverse direction.

The roads indicated, as well as all other mountain roads in Yosemite National Park, are kept in good condition during the summer months and are being gradually improved. Although heavy grades

will be encountered, as is the case on all mountain roads, fear of serious difficulties need not be entertained.

MISCELLANEOUS ROUTES.

Automobiles and other vehicles may enter from Fresno, Madera, Merced, and other points south and west of the park via Wawona and the Mariposa Grove of Big Trees; from the east via the Tioga Road, which is reached at Mono Lake from Lake Tahoe on the north, Tonopah, Nev., on the east, and Mojave, Big Pine, and Bishop, Calif., on the south; and from the north and west the park may be reached via the Big Oak Flat and Coulterville Roads from Stockton, Modesto, Merced, etc. See map in center of this circular.

No positive date can be given for the opening of the mountain roads leading to Yosemite. However, the following dates are approximately correct:

The Big Oak Flat Road opens June 1 and closes November 1. The Tioga Road opens July 15 and closes September 30. The Wawona Road opens May 1 and closes November 1. The El Portal and Valley Roads are open all the year, except occasionally during the winter when Valley roads may be blocked with snow for short periods. This occurs rarely, however, as the roads are cleared promptly with snowplows.

Immediately upon the opening of any of the roads to Yosemite the automobile associations of California are notified, and from them tourists can obtain information.

For the convenience of automobilists who wish to avoid driving over mountain roads, a freight rate of \$14 per automobile between Merced and El Portal has been established by the Yosemite Valley Railroad Co. By this means tourists may have their own machines for use in the park.

ROAD SIGN INFORMATION.

As fast as funds are available for that purpose the National Park Service is having standard signs placed along the roads and trails of this park for the information and guidance of the motorists and other visitors that use the park roads and trails.

These signs, in general, consist of information signs, direction signs, elevation signs, and name signs, all of which are of rectangular shape and mounted horizontally; and milepost signs, rectangular in shape but mounted diagonally; all of which usually have dark-green background and white letters or vice versa; and danger or cautionary signs, most of which are circular in shape and usually have red background and white letters; and comfort-station, lavatory, and similar signs, triangular in shape, having dark-green back-

ground and white letters. These last signs are so mounted that when pointing down they designate ladies' accommodations and when pointing upward they designate men's accommodations.

The text on the standard road signs is in sufficiently large type to ordinarily permit their being read by a motorist when traveling at a suitable speed; however, as an additional safeguard, the motorist must always immediately slow down or stop, or otherwise fully comply with the injunctions shown on the circular road cautionary signs.

Because of lack of funds it has not been possible to place cautionary signs at all hazardous places in the roads; therefore the motorist must always have his car under full control, keep to the right and sound horn when on curves that are blind, and not exceed the speed limit which is 20 miles per hour on straight, fairly level road and 12 miles per hour on curves, narrow or steep descending sections of road. On the floor of the valley a higher rate of speed is permitted, as shown in the regulation on page 42.

PUBLIC UTILITIES AND CONVENIENCES.

HOTELS, LODGES, AND CAMPS.

The following hotels, lodges, and camps are operated in the park during periods shown:

Sentinel Hotel.....	Oct. 1-Apr. 30
Glacier Point Mountain House.....	May 15-Nov. 1
Yosemite Lodge.....	May 1-Oct. 1
Camp Curry.....	May 1-Oct. 1
Big Trees Lodge.....	June 1-Sept. 1
Hetch Hetchy Lodge.....	June 1-Sept. 1
Tuolumne Meadows Lodge.....	July 10-Sept. 15
Little Yosemite Hikers' Camp.....	June 1-Sept. 1
Merced Lake Hikers' Camp.....	June 1-Sept. 1
Boothe Lake Hikers' Camp.....	July 10-Sept. 1
Tuolumne Meadows Hikers' Camp.....	July 10-Sept. 1
Eyell Base Hikers' Camp.....	July 10-Sept. 1
Glen Aulin Hikers' Camp.....	July 10-Sept. 1
Tenaya Lake Hikers' Camp.....	July 10-Sept. 1

INFORMATION BUREAUS.

The National Park Service maintains an information bureau at the superintendent's office, in Yosemite, and those in charge will supply accurate information concerning points of interest, trails, camping facilities, camping locations, fishing places, etc.

A branch office of the California State Automobile Association is maintained in conjunction with the park service information bureau, where the best road information obtainable is furnished free to autoists.

Information can also be obtained at any of the hotels, camps, lodges, or garages and at the transportation office.

MEDICAL AND HOSPITAL SERVICE.

Yosemite Valley has among other conveniences a hospital building, where medical and surgical service is provided. A competent physician and surgeon, with attendant nurses, is in charge of the building and will promptly attend patients at any place within the park. Prices are regulated by the Director of the National Park Service. For rates, see page 76.

LAUNDRIES.

Adequate laundry facilities are provided at Yosemite Lodge and Camp Curry.

TELEPHONE AND TELEGRAPH.

Local and long-distance telephone and telegraph service is maintained by the National Park Service at the Administration Building in the new Yosemite Village and at branch offices maintained at Camp Curry and Yosemite Lodge. Telephonic communication may be had to all interior hotels, camps, and lodges, and long-distance and telegraph messages may be sent from interior points and delivered by telephone to such points. Money transfers are handled at the main office in the Administration Building.

EXPRESS.

Express service is available in the General Store, old Yosemite Village.

POSTAL SERVICE.

Post offices are maintained in new Yosemite Village, Yosemite Lodge, and at Camp Curry. Yosemite National Park post office is located in new Yosemite Village, the Yosemite Lodge post office at Yosemite Lodge, and Camp Curry post office at Camp Curry. Mail for guests of the hotels, or lodges of the Yosemite Park & Curry Co. other than Yosemite Lodge, Yosemite Lodge Annex, and Camp Curry, should be addressed, care of Yosemite Park & Curry Co., Yosemite National Park, Calif., marked "For _____" (insert name of hotel or lodge). Mail for guests of Yosemite Lodge and Yosemite Lodge Annex should be addressed, Yosemite Lodge, Calif. Mail for guests of Camp Curry should be addressed, Camp Curry, Calif.

MESSENGER SERVICE.

A messenger service is in operation between the telegraph office in the Administration Building and established camps on the floor of

the valley. A charge of 25 cents is made for delivery of a telegram or package or the performance of an errand from the village to a camp.

GARAGE SERVICE.

The Yosemite Park & Curry Co. operates a garage and repair shop in Yosemite Valley where a stock of standard automobile parts, tires, etc., is carried. This company also maintains gasoline and oil stations at its garage at Chinquapin, on the Wawona Road, and in the Tuolumne Meadows, on the Tioga Road.

The company also operates a storage company at Camp Curry, where gas and oils and minor repair service are available.

STORES AND NEWS STANDS.

A general store and meat market is operated in Yosemite Village by the Yosemite Park & Curry Co. In this general store a complete line of groceries, meats, clothing, and campers' supplies of all kinds is available. This company also operates stores at Merced Lake Lodge and in Tuolumne Meadows, where food supplies of a kind suitable for the high mountain camper are kept.

At Camp Curry there is a grocery and provision store where a full line of groceries, meats, and food supplies is carried.

Mrs. John Degan operates a confectionery store and bakery and in connection therewith an ice cream parlor. Ice cream parlors are also maintained in the general store in Yosemite Village, in Yosemite Lodge, and Camp Curry.

In all of the hotels, lodges, and camps there are news stands at which curios, post cards, photographs, souvenirs, newspapers, magazines, tobacco, smokers' supplies, etc., are available.

PHOTOGRAPHS OF THE PARKS.

There are five concerns doing a photographic business in Yosemite National Park, namely, the Yosemite Park & Curry Co., A. C. Pillsbury, J. T. Boysen, D. J. Foley, and H. C. Best. All but the first named of these have their studios in Yosemite Village. The studio of that company is situated at Camp Curry. Photographic sales stands are maintained at all of the hotels, lodges, and camps.

DISTANCES TO PRINCIPAL POINTS OF INTEREST.

Distances and points of interest between El Portal and Yosemite, by automobile.

Name.	Distance between points.	Distance from El Portal.	Elevation above sea level.
	Miles.	Miles.	Feet.
El Portal.....			1,960
Park entrance.....	1.25	1.25	2,117
Arched Rocks.....	2.0	3.25	2,847
Coulterville Road to Merced and Tuolumne Groves of Big Trees.....	1.875	5.125	3,450
Cascade Falls (600 feet).....	.875	6.0	4,025
Pohono Bridge; road to Mariposa Grove of Big Trees.....	3.0	9.0	3,880
Bridalveil Falls (620 feet).....	.5	9.5	4,787
Three Graces.....		9.5	3,950
El Capitan Bridge.....	.5	10.0	3,976
El Capitan (3,604 feet).....	2.5	10.5	7,564
Cathedral Spires.....		10.5	6,114
Sentinel Rock.....		13.0	7,000
Three Brothers.....		13.0	7,773
Yosemite post office.....	1.0	14.0	3,960
Sentinel Hotel.....		14.0	3,960
Yosemite Lodge.....		14.0	3,980
Camp Curry.....	.5	15.0	4,000

NOTE.—All directions east.

Distances from superintendent's office, Yosemite Village, to principal points in Yosemite Valley.

	Distance.	Direction.		Distance.	Direction.
	Miles.			Miles.	
Basket Dome (top of).....	9.0	Northeast.	Mirror Lake.....	3.0	East.
Camp Curry.....	1.0	East.	Mount Watkins (top of).....	9.0	Do.
Clouds Rest.....	11.0	Do.	Nevada Falls (594 feet).....	6.0	Do.
El Capitan.....	3.5	West.	North Dome (top of).....	11.0	Northeast.
Glacier Point.....	4.5	South.	Sentinel Rock.....	1.0	West.
Glacier Point Hotel and Camp.....	4.5	Do.	Tenaya Canyon.....	4.0	East.
Half Dome (foot of).....	3.0	East.	Union Point.....	3.0	South.
Happy Isles.....	2.5	Do.	Vernal Falls (317 feet).....	5.0	East.
Liberty Cap.....	5.5	Do.	Yosemite Falls (1,750 feet).....	.5	North.
			Yosemite Lodge.....	.5	Do.

Road trips from Yosemite Village.

1. YOSEMITE TO MARIPOSA BIG TREES VIA WAWONA ROAD.

Name.	Distance between points.	Distance from Yosemite.	Elevation above sea level.	Remarks.
	Miles.	Miles.	Feet.	
Yosemite.....			3,960	
El Capitan Bridge.....	3.0	3.0	3,976	Crossing Merced River to foot of Big Oak Flat Road.
Bridalveil Falls.....	1.0	4.0	3,960	
Bridalveil (checking station).....	.2	4.2	3,960	Junction Wawona Road.
Artist Point.....	2.0	6.0	4,701	Beautiful view of Yosemite Valley.
Inspiration Point (checking station).....	1.5	7.5	5,391	From this point on the old Indian trail Yosemite was discovered in 1851.
Grouse Creek.....	2.5	10.5	5,500	Old stage relay station.
Chinquapin.....	4.0	14.5	6,256	Road branches to Glacier Point.
Eleven-mile station.....	2.0	16.5	6,000	Old stage relay station.
Eight-mile station.....	3.0	19.5	5,700	Do.
Alder Creek (checking station).....	2.4	21.9	4,850	Automobiles checked in and out of park.
Wawona.....	8.0	27.5	4,096	Hotel accommodations and store; good camping and fishing.
Junction Big Tree Road.....	4.0	31.5	5,500	Old stage relay station.
Mariposa Big Tree Grove.....	4.0	35.5	6,000	Grove of giant sequoia trees discovered by Galen Clark in 1857.

Road trips from Yosemite Village—Continued.

2. YOSEMITE TO MERCED BIG TREES AND MERCED VIA COULTERVILLE ROAD.

Name.	Distance between points.	Distance from Yosemite.	Elevation above sea level.	Remarks.
	<i>Miles.</i>	<i>Miles.</i>	<i>Feet.</i>	
Yosemite.....			3,960	
Cascade Creek and Falls.....	7.75	7.75	3,450	
Junction of road to El Portal.....	1.05	8.80	3,450	
Big Meadows.....	2.60	11.40	4,500	Beautiful meadowland. Beautiful grove of sequoias composed of about 40 trees. While not so large as those in the Mariposa Grove, they are well worth seeing.
Merced Grove of Big Trees.....	8.30	19.70	6,000	
Hazel Green.....	2.90	22.60		
Bower Cave.....	13.20	35.80		
Coulterville.....	13.30	49.10		
Merced.....	46.50	95.60		

3. YOSEMITE TO TUOLUMNE BIG TREES AND STOCKTON VIA BIG OAK FLAT ROAD.

Yosemite.....			3,960	
El Capitan Bridge.....	4.0	4.0	3,976	
El Capitan (checking station).....	4.0	4.0	3,960	Junction Big Oak Flat Road. Old sawmill site.
Gentrys (checking station).....	4.1	8.1	5,759	
Tamarack Flat.....	2.8	10.9	6,390	Good grazing, camping, and fishing.
GIN Flat.....	3.1	14.0	7,000	Good camping.
Crane Flat (ranger station).....	2.2	16.4	6,311	Junction cut-off road to Coulterville and Modesto. Good camping.
Tuolumne Grove of Big Trees.....	1.0	17.2	6,000	Grove of about 20 sequoias.
Carl Inn.....	3.2	22.4	4,678	Mountain cattle ranch.
Hamiltons Station.....	12.2	35.8		
Groveland.....	10.5	46.3		
Chinese Camp.....	16.9	63.2		
Knights Ferry.....	15.7	78.9		
Stockton.....	36.3	115.2		

4. YOSEMITE TO MONO LAKE VIA TIOGA ROAD.

Yosemite.....			3,960	
El Capitan Bridge.....	4.0	4.0	3,976	
El Capitan (checking station).....	4.0	4.0	3,960	Junction Big Oak Flat Road. Old sawmill site.
Gentrys (checking station).....	4.1	8.1	5,759	
Tamarack Flat.....	2.81	10.93	6,390	Good grazing, camping, and fishing.
Crane Flat (ranger station).....	5.21	16.20	6,311	Good camping.
Tuolumne Grove.....	1.20	17.48	6,000	Grove of about 20 sequoias.
Carl Inn.....	1.2	22.40	4,500	South Fork of Tuolumne River.
Junction Tioga Road.....	1.0	23.40	5,009	
Ranger station.....	4.2	27.6	5,500	
Aspen Valley.....	2.0	29.6	6,000	Good camping and grazing.
Lower crossing of Middle Fork.....	4.14	33.74	6,500	
Upper crossing of Middle Fork.....	5.46	39.20	8,000	
White Wolf.....	1.40	40.60	8,090	Do.
Yosemite Creek trail.....	3.00	43.60	8,100	
Yosemite Creek crossing.....	2.25	45.85	7,200	
Yosemite Falls trail.....	3.85	49.70	8,000	Do.
Snow Creek.....	3.48	53.18	8,500	
Lake Tenaya.....	4.52	57.70	8,146	Good camping, grazing, and fishing.
Soda Springs.....	7.50	65.20	8,594	Natural soda springs; good camping and fishing.
Tioga Pass.....	7.0	72.20	9,941	Summit of mountains.
Mono Lake.....	16.0	88.20	6,423	

*Trail trips from Yosemite Village.***1. YOSEMITE TO WAWONA BY HORSE TRAIL VIA GLACIER POINT.**

Name.	Distance between points.	Distance from Yosemite.	Elevation above sea level.	Remarks.
	<i>Miles.</i>	<i>Miles.</i>	<i>Fect.</i>	
Yosemite.....			3,960	
Glacier Point.....	4.5	4.5	7,214	Hotel and camp accommodations.
Perego Meadows.....	6.5	11.0	7,500	Good fishing, grazing, and camping.
Westfall Meadows.....	1.0	12.0	7,500	Good camping.
Empire Meadows.....	3.5	15.5	6,500	Good fishing and camping.
Alder Creek.....	3.0	18.5	5,500	Good fishing.
Wawona.....	6.5	25.0	4,096	Hotel and store; good camping and fishing.

2. YOSEMITE TO GLACIER POINT VIA PANORAMA TRAIL, OVER POHONO TRAIL, AND RETURN VIA FORT MONROE ON WAWONA ROAD.

Yosemite.....			3,960	
Glacier Point.....	4.5	4.5	7,214	Hotel and camp accommodations.
Taft Point.....	3.0	7.5	7,000	Taft Point is close to the Fissures and overlooking them. They are several hundred feet deep.
Bridalveil Creek.....	2.0	9.5	7,000	Good fishing and camping.
Dewey Point.....	2.5	12.0	6,000	Beautiful view of Yosemite Valley.
Crocker Point.....	.5	12.5	6,000	Do.
Stanford Point.....	.75	13.25	6,000	Do.
Old Inspiration Point.....	1.0	14.25	6,603	Do.
Yosemite.....	8.0	22.25	3,960	

3. YOSEMITE TO BUCK CAMP BY HORSE TRAIL VIA GLACIER POINT AND RETURN VIA MERCED LAKE.

Yosemite.....			3,960	
Glacier Point.....	4.5	4.5	7,214	Hotel and camp accommodations. Beautiful view.
Mono Meadows.....	5.0	9.5	7,000	Good camping and fishing.
Junction with Ostrander Lake trail.....	3.5	13.0	8,500	
Crescent Lake.....	11.0	24.0	8,521	Good camping.
Johnson Lake.....	1.0	25.0	8,521	Good fishing.
Buck camp.....	2.0	27.0	8,000	Good camping.
South Fork of Merced River.....	7.5	34.5	9,000	Good camping and fishing.
Fernandez Pass.....	3.0	37.5	10,175	
Isberg Pass.....	7.0	44.5	10,502	
Lyell Fork of Merced River.....	8.0	52.5	9,520	Fair camping.
Junction with McClure Fork trail.....	6.0	58.5	9,000	
Merced Lake.....	3.0	61.5	7,500	Good camping and fishing.
Yosemite, over Nevada and Vernal Falls.....	16.0	77.5	3,960	

4. YOSEMITE TO TUOLUMNE MEADOWS AND SODA SPRINGS VIA ROAD TO MIRROR LAKE, THENCE VIA HORSE TRAIL AND TENAYA CANYON.

Yosemite.....			3,960	
Mirror Lake.....	3.0	3.0	4,096	Small lake showing a beautiful reflection.
Foot of trail in Tenaya Canyon.....	1.0	4.0	4,100	
Snow Creek.....	2.25	6.25	6,500	
Lake Tenaya.....	7.75	14.00	8,146	Splendid feed and good fishing.
Soda Springs via Tioga road.....	8.00	22.00	8,594	Do.

Trail trips from Yosemite Village—Continued.

5. YOSEMITE TO HETCH HETCHY VALLEY BY HORSE TRAIL VIA TENAYA CANYON AND MCGEE LAKE.

Name.	Distance between points.	Distance from Yosemite.	Elevation above sea level.	Remarks.
	Miles.	Miles.	Feet.	
Yosemite.....			3,960	
Lake Tenaya.....	14.0	14.0	8,146	Good camping and fishing.
McGee Lake.....	6.25	20.0	9,020	Good fishing.
Conness Creek.....	0.8	21.5	9,000	Good camping.
Virginia Canyon.....	8.0	29.5	9,000	Do.
Matterhorn Canyon.....	6.0	35.5	9,000	Do.
Benson Pass.....	4.3	39.0	10,130	Do.
Smedburg Lake.....	2.2	41.5	9,214	Good fishing.
Rodgers Lake.....	2.4	44.0	9,214	Do.
Rodgers Meadows.....	1.6	45.5	9,000	Good camping and fishing.
Pleasant Valley.....	8.0	53.5	8,000	Do.
Rancheria Creek.....	11.3	64.8	4,500	Do.
Hetch Hetchy via Tiltill Valley and Beehive.....	18.5	83.35	Hetch Hetchy flooded; Rancheria trail impassable to Hetch Hetchy.

6. YOSEMITE TO HETCH HETCHY BY HORSE TRAIL VIA YOSEMITE FALLS, WHITE WOLF, AND HARDEN LAKE.

Yosemite.....			3,960	
Junction of Eagle Peak and Yosemite Falls trail.....	3.25	3.25	6,625	
Junction of Eagle Peak and Hetch Hetchy trails.....	.05	3.75	7,000	
Junction with Tioga Road.....	6.65	10.4	8,000	
White Wolf.....	3.00	13.4	8,090	Good camping and fishing.
Harden Lake.....	3.00	16.4	7,375	Good camping.
Smith Meadows.....	6.00	22.4	6,500	
Junction of trail between Hog Ranch and Hetch Hetchy.....	5.00	27.4	4,500	
Hetch Hetchy Road.....	1.5	28.90	4,000	
Hetch Hetchy.....	2.5	31.40	3,660	

7. YOSEMITE TO HETCH HETCHY BY HORSE TRAIL VIA TENAYA CANYON, MATTERHORN, AND TILTILL.

Yosemite.....			3,960	
Matterhorn Canyon.....	35.05	35.05	9,000	Good camping.
Slide Canyon.....	12.0	47.05	9,500	Do.
Kerrick Canyon.....	6.5	53.55	8,500	Good camping and fishing.
Junction of Thompson and Stubblefield Canyons.....	12.0	65.55	8,500	Good camping.
Tilden Lake.....	6.3	71.8	9,000	Good camping and fishing.
Jack Main Canyon.....	2.2	74.5	9,000	Do.
Beehive.....	13.1	87.0	6,600	Do.
Hetch Hetchy.....	6.2	93.0	3,660	Do.

8. YOSEMITE TO HETCH HETCHY BY HORSE TRAIL VIA TENAYA CANYON, SMEDBURG, AND BENSON LAKES.

Yosemite.....			3,960	
Smedburg Lake.....	41.5	41.5	9,214	Good camping and fishing.
Benson Lake.....	4.5	46.5	9,200	Do.
Junction of Bear Valley trail via Seavey Pass and Kerrick Canyon.....	7.3	53.3	6,500	Do.
Via Bear Valley to junction of Rancheria trail.....	7.5	60.3	8,000	Do.
Hetch Hetchy via Rancheria Tiltill and Beehive.....	28.1	88.4	3,660	

Trail trips from Yosemite Village—Continued.

9. YOSEMITE TO SODA SPRINGS BY HORSE TRAIL VIA VOGELSANG PASS.

Name.	Distance between points.	Distance from Yosemite.	Elevation above sea level.	Remarks.
	Miles.	Miles.	Feet.	
Yosemite.....			3,960	
Nevada Falls.....	5.3	5.3	5,910	Beautiful view from top of falls.
Junction of Clouds Rest trail...	2.9	8.2	7,000	Good camping.
Echo Creek.....	5.6	13.8	8,000	Good fishing.
Lake Merced.....	2.2	16.0	7,500	Good camping and fishing.
McClure Fork.....	.8	16.8	9,000	Do.
Junction of Vogelsang Pass and Tuolumne Pass trails.	1.0	17.8	9,000	No camping.
Upper crossing of McClure Fork (Bernice Lake trail).	4.0	21.8	10,000	Can camp in August; before then feed is scarce.
Fletcher Lake.....	3.0	24.8	10,000	Good camping.
Evelyn Lake.....	1.3	26.1	10,000	Poor camping.
Junction to Lyell Fork of Tuolumne and Ireland Creek.	3.8	29.9	9,000	Excellent camping and fishing.
Soda Springs.....	6.5	36.4	8,594	Do.

10. YOSEMITE TO SODA SPRINGS, LYELL FORK MEADOWS, AND DONOHUE PASS BY HORSE TRAIL VIA NEVADA FALLS.

Yosemite.....			3,960	
Top of Nevada Falls.....	5.3	5.3	5,910	Beautiful view.
Junction of Clouds Rest trail...	2.9	8.2	7,000	
Top of Sunrise Hill.....	5.0	13.2	8,000	Good camping.
Divide at head of Cathedral Meadows.	5.4	18.6	9,000	Do.
Junction with Tioga Road.....	4.0	22.6	8,550	Good camping and fishing.
Soda Springs.....	1.2	23.8	8,594	Do.
Junction of Lyell and Dana Forks of Tuolumne.	1.00	24.8	8,594	Do.
Head of Lyell Fork Meadows...	9.25	34.05	9,000	Fine camping and excellent fishing.
Donohue Pass.....	3.75	37.8	11,000	

11. YOSEMITE TO SODA SPRINGS BY HORSE TRAIL VIA YOSEMITE FALLS, EAGLE PEAK, AND YOSEMITE POINT TRAIL.

Yosemite.....			3,960	
Junction with Eagle Peak trail..	3.25	3.25	7,283	
Junction to Yosemite Point trail.	.5	3.75	7,300	
Top of Yosemite Falls.....	.0	3.75	7,300	A beautiful view of Yosemite Falls and Yosemite Valley.
Porcupine Flat and junction with Tioga Road.	7.5	11.25	8,066	Good grazing and camping.
Tenaya Lake.....	8.0	19.25	8,146	Good camping and fishing.
Soda Springs.....	8.0	27.25	8,594	Do.

12. YOSEMITE TO NORTH DOME BY HORSE TRAIL AND RETURN VIA YOSEMITE POINT.

Yosemite.....			3,960	
Mirror Lake.....	3.0	3.0	4,096	Beautiful reflection in lake.
Foot of trail in Tenaya Canyon..	1.0	4.0	4,100	Good fishing.
Junction with Lake Tenaya trail.	2.25	6.25	6,500	Close to Snow Creek.
Junction with Tioga Road trail at top of divide.	2.50	8.75	8,000	Good camping close by.
North Dome.....	2.75	11.50	7,531	Beautiful view of Yosemite Valley, Tenaya Canyon, and surrounding country.
Yosemite Point.....	3.50	15.00	6,935	Beautiful view.
Yosemite.....	4.50	19.50		

¹ Two miles north and east of Merced Lake, junction with new Babcock and Emeric Lake trail is made. Passes Babcock and Emeric Lakes over Tuolumne Pass down Rafferty Creek and shortens the distance to Soda Springs, and being at a lower elevation is open earlier in the spring.

Trail trips from Yosemite Village—Continued.

13. YOSEMITE TO LAKE TENAYA BY HORSE TRAIL AND RETURN VIA FORSYTH PASS AND CLOUDS REST.

Name.	Distance between points.	Distance from Yosemite.	Elevation above sea level.	Remarks.
	<i>Miles.</i>	<i>Miles.</i>	<i>Feet.</i>	
Yosemite.....			3,960	
Mirror Lake.....	3.00	3.00	4,096	Beautiful reflection in lake.
Junction with North Dome trail.....	3.25	6.25	6,500	Close to Snow Creek.
Lake Tenaya.....	7.50	13.75	8,146	Good camping, fair fishing.
Forsyth Pass.....	3.4	17.15	9,500	The only pass through which a horse trail could be built between Lake Tenaya and Clouds Rest to shorten the distance between these two interesting points.
Clouds Rest.....	4.00	21.15	9,930	Beautiful panorama.
Nevada Falls.....	6.00	27.15	5,910	Beautiful view.
Yosemite.....	5.3	32.45		

14. YOSEMITE TO MERCED LAKE AND WASHBURN LAKE BY HORSE TRAIL.²

Yosemite.....			3,960	
Nevada Falls.....	5.3	5.3	5,910	Beautiful view from top of falls.
Junction with Sunrise trail.....	5.0	10.3	8,000	Good camping.
Merced Lake.....	5.7	16.0	7,500	Splendid camping and fishing.
Washburn Lake.....	3.3	19.3	7,650	Do.

15. YOSEMITE TO JOHNSON LAKE AND BUCK CAMP BY HORSE TRAIL VIA GLACIER POINT, ILLILOUETTE CREEK, BUENA VISTA CREEK, AND ROYAL ARCH LAKES.

Yosemite.....			3,960	
Glacier Point.....	4.5	4.5	7,214	Hotel and camp accommodations. Beautiful view.
Illilouette Creek.....	2.0	6.5	6,300	Good fishing and camping.
Junction Mono Meadow trail.....	2.0	8.5	6,500	Do.
Buena Vista Lake.....	9.5	18.0	9,777	Do.
Royal Arch Lake.....	1.5	19.5	8,800	Do.
Johnson Lake.....	1.0	20.5	8,521	Do.
Buck Camp.....	2.0	22.5	8,100	Good camping and grazing.

16. YOSEMITE TO MORaine MEADOWS BY HORSE TRAIL VIA NEVADA FALLS, STARR KING, OTTOWAY CREEK, AND MERCED PASS.

Yosemite.....			3,960	
Nevada Falls.....	6.0	6.0	5,910	Beautiful view.
Junction Mono Meadow trail.....	1.5	7.5	6,600	
Junction Merced Pass trail.....	1.0	8.5	6,700	
Junction Mountain Clark trail.....	3.0	11.5	7,300	Good fishing and camping.
Ottoway Creek.....	2.5	14.0	7,500	
Merced Pass.....	4.0	18.0	9,295	
Junction Moraine Meadow trail.....	2.0	20.0	8,600	
Moraine Meadows.....	1.5	21.5	8,700	Good fishing, camping, and grazing.

17. YOSEMITE TO WATER WHEEL FALLS BY HORSE TRAIL VIA TENAYA CANYON AND WHITE CASCADES.

Yosemite.....			3,960	
Lake Tenaya.....	14.0	14.0	8,146	Good camping and fishing.
McGee Lake.....	6.25	20.25	9,020	Good fishing.
White Cascades.....				
Tuolumne Canyon.....	.8	21.05	7,850	Good camping and fishing.
Water Wheel Falls.....	3.3	24.35	6,500	Good fishing.

² Trip can be made from Lake Tenaya to Lake Merced by taking a branch trail leading off the Lake Tenaya-Clouds Rest trail, which joins the Merced Lake trail at its junction with the Sunrise trail. This makes the distance between Lake Tenaya and Lake Merced about 11 miles.

Trail trips from Yosemite Village—Continued.

18. YOSEMITE TO TEN LAKES BY HORSE TRAIL VIA YOSEMITE FALLS AND YOSEMITE CREEK.

Name.	Distance between points.	Distance from Yosemite.	Elevation above sea level.	Remarks.
	<i>Miles.</i>	<i>Miles.</i>	<i>Fcet.</i>	
Yosemite.....			3,960	
Junction of Eagle Peak and Yosemite Falls trail.....	3.25	3.25	6,625	
Junction of Eagle Peak and Hetch Hetchy trail.....	.5	3.75	7,000	Good fishing.
Tioga Road.....	5.8	9.55	7,200	Good camping and fishing.
Divide between watershed of Tuolumne River and Yosemite Creek.....	7.4	16.95	9,750	Beautiful view.
Ten Lakes.....	1.00	17.95	8,900	Excellent fishing and camping.

19. YOSEMITE TO BENSON LAKE BY HORSE TRAIL VIA YOSEMITE FALLS, WHITE WOLF, HARDEN LAKE, AND PATE VALLEY.

Yosemite.....			3,960	
Junction of Eagle Peak and Yosemite Falls trail.....	3.25	3.25	6,625	
Junction of Eagle Peak and Hetch Hetchy trail.....	.5	3.75	7,000	
Junction with Tioga Road.....	6.65	10.4	8,000	
White Wolf.....	3.00	13.4	8,090	Good camping and fishing.
Harden Lake.....	3.00	16.4	7,575	Good camping.
Pate Valley.....	8.00	24.8	4,400	Good camping and fishing.
Pate Valley via Lukens Lake.....		23.1		
Benson Lake.....	14.5	37.6	8,000	Do.

FISHING IN THE PARK.¹

The introduction of game fish into the waters of Yosemite National Park began in 1878, 13 years before the area now confined within the park boundaries had been set aside as a national reservation, when plants of rainbow trout were made in some of the lakes in what is now the northwestern corner of the park. In the following year plants of eastern brook trout were made in the Lyell Fork of the Tuolumne River, and in 1880 plants of rainbow trout were repeated in the Lake Eleanor country. Nothing more seems to have been done in the way of stocking any of the waters that are now within the park until 1890, the year that the park was created, when a general stocking of the streams and lakes was begun. This has been continued, at first intermittently, but since 1911 plants of 100,000 to 400,000 young fry have been made annually, with the result that to-day all of the principal lakes and streams of the park contain one or more well-known species of game fish.

The ten species of trout in the waters of the park about in the order of their relative abundance are:

Rainbow trout (*Salmo irideus*).

Eastern brook trout (*Salvelinus fontinalis*).

Shasta trout (*Salmo shasta*).

¹ Briefed from the "Handbook of Yosemite National Park" by Ansel F. Hall.

Loch Leven trout (*Salmo trutta*).

Cutthroat or black-spotted trout (*Salmo clarkii*).

Steelhead trout (*Salmo gairdneri*).

Brown trout (*Salmo fario*).

Dolly Varden trout (*Salvelinus parkeri*).

Golden trout (*Salmo roosevelti*).

Tahoe trout (*Salmo henshawi*).

Of these the eastern brook, rainbow, and Shasta trout predominate, being widely distributed throughout the streams and lakes of the park. The latter two species are so nearly alike as to be almost indistinguishable even to the most expert anglers and are classed together by the park service and by the State fish hatchery as rainbow. Cutthroat, steelhead, brown, and Loch Leven trouts have been widely planted during the last few seasons. The last-named species has done very well in the lakes, where it multiplies rapidly and is proving a splendid game fish. Dolly Varden trout are abundant in but one lake in the park and golden trout have been planted in one of the high mountain lakes. Tahoe trout were placed in the Tuolumne and Merced Rivers several years ago, but are now exceedingly rare.

The following brief descriptions will help the angler to identify the trout which may be taken from park waters:

Rainbow trout.—This, the only trout native to the park, is abundant in almost all Yosemite streams and lakes. It and its close relative, the Shasta trout, or McCloud River rainbow, may be easily distinguished (*a*) by the rich rosy red band along the middle of the side; (*b*) by the small, roundish, or star-shaped black spots which usually cover the body profusely, most numerous on the back and upper part of the sides; (*c*) by the olive-green ground color of the back; and (*d*) by the more or less spotted fins, the dorsal, anal, and ventrils not usually tipped with white. The rainbow is considered the best game fish of all trouts. Its normal food consists of worms, insect larvæ, and salmon eggs, but so readily does it take the fly that it is seldom necessary to resort to bait.

Shasta trout.—The Shasta trout, or McCloud River rainbow, is classed as rainbow in Yosemite National Park. In habits and general appearance the two species are scarcely distinguishable. The Shasta trout, however, differs from the real rainbow in its larger size, smaller mouth, and larger eyes. Because of the ease of propagation this trout is more widely used than any other species in fish-cultural operations in California. Although this species lacks some of the wild gaminess of the typical rainbow, the difference is made up by its superior size.

Eastern brook trout.—This beautiful and well-known trout may be readily identified by the red spots on the sides, but not on the back,

and by the mottled or marbled coloring of the upper parts. Technically the fish is not a true trout, but belongs to a closely allied genus correctly known as the charrs. The natural habitat of the brook trout, which is a native of the Eastern States, is in cold, slow-running meadow brooks, but it does well in all streams and lakes of the park, where it is one of the commonest species. The fish is wary, and with this species as with no other is a knowledge of the life habits absolutely necessary to the successful angler. The eastern brook trout does not keep well or ship well, probably on account of the fat.

Loch Leven trout.—The Loch Leven trout is a native of Europe and is a typical lake fish, being one of the few trout which spawn in still water. It is most easily distinguished by its fully spotted character and by its silvery sides, which are marked with a varying number of X-shaped or round black spots. The species often hybridizes with the brown trout, but typical specimens differ from this latter species by being slimmer, by the lack of the brown color, and by the smaller size of the adipose fin. About 20 lakes of Yosemite National Park—among them the noted Benson, May, Merced, Washburn, and Ten Lakes—have been stocked with this species and in all cases the fish have thriven very well.

Cutthroat or black-spotted trout.—The cutthroat trout can be readily known from all other species by the red blotches on the membrane of the lower jaw. This fish is not abundant in the park, but has been introduced in the Tuolumne River from Hetch Hetchy to its source, in the South Fork of the Merced River, and in Gaylor and Peeler Lakes.

Steelhead trout.—This species, which is now recognized by scientists as a sea-run form of the rainbow trout, has been used during the last few seasons in stocking many of the park waters. The typical steelhead can be distinguished from the typical rainbow by its large size and proportionately small head, by its large scales, and by its bright silvery color. Since 1917 the species has been introduced in Yosemite National Park in the Merced River, and in Babcock, Emeric, Grant, Tenaya, and Ten Lakes. The steelhead is a favorite game fish and reaches a large size. The best lure is generally a spinner, but artificial flies are readily taken.

Brown trout.—The European or German brown trout was introduced into the United States in 1895, and has since been planted in several lakes and streams of Yosemite National Park. The species is rather readily identified (*a*) by the decidedly brown color of the back and sides, (*b*) by the black spots on the back and red spots on the sides, and (*c*) by the silvery or brownish belly. This species prefers cold, rapidly running water at the mouths of streams tributary to lakes. It usually feeds in the morning and evening, but

during the day lies quietly in deep pools or in the shadow of overhanging bushes for hours at a time. The normal food is formed of insects and their larvæ, worms, mollusks, small fishes, and fish eggs. In the park the brown trout, or hybrids between it and the Loch Leven, may be taken in the Merced River, in the South Fork of the Merced River, and in Merced and Edna Lakes.

Dolly Varden trout.—This charr is found in the park only in one of the Chain o' Lakes near the southern boundary. The species may be known by the presence of small red or orange spots on the body. It may be distinguished from the eastern brook trout, which also has red spots on the body, by the absence of black marblings, and by the presence of red spots on the back. It does not rank high as a game fish, and as a food fish is inferior to all other species.

Golden trout.—The most beautiful of all trouts, the Roosevelt, or golden trout, is native to only one small stream near Mount Whitney in the southern Sierra Nevada. The clear golden yellow of its sides, which is overlaid by a delicate rosy lateral band, makes the fish easily distinguishable. As a game fish this trout is one of the best. It will rise to any kind of a lure, including the artificial fly, at any time of day. As an experiment the species was introduced into one of the unstocked lakes of the park in 1919.

Tahoe trout.—In 1896 fry of this variety were planted in Hetch Hetchy Valley, at Soda Springs, and in the Lyell Canyon, but at present the species is very rare. The occasional specimens which are sometimes taken may be distinguished by the dark olive-green color of the back and by the widely scattered black spots which everywhere cover the body. The body is stout with the greatest depth about one-fourth the total length. The Tahoe trout feeds largely on minnows, but black ants and other insects are taken in quantities.

The results of planting and transplanting have been most gratifying, and, in spite of the rapidly increasing travel during the past few years, with its accompanying demand on the fishing streams, even the grounds most frequented by fishermen have continued to show an increase in stock, and the sport of fishing is decidedly improving. Naturally the plants have done better in some localities than in others, depending on the natural food supply and other local conditions and upon the fishing demands, with the result that in some localities fish exist in abundance although small in size; in others they have failed entirely to thrive; in others they are plentiful in number even though extensively fished; while in others, although plentiful in numbers and large in size, abundant supply of natural food makes them wary of rising to bait, and experience and patience are required for success in angling.

In Yosemite National Park few anglers, even the most inexperienced, use bait during the summer or autumn. Of the various artificial flies the California Royal Coachman almost always proves the best lure; gray and brown hackles are also very good. Copper-nickel spinners of the sizes 0 to 2 are often taken in the lakes and sometimes in the streams when the trout are not rising to flies. Early in the season grasshoppers, earthworms, salmon eggs, and white grubs are used for bait with a greater or less degree of success.

Persons desiring to fish in the waters of Yosemite National Park must secure a sporting fishing license, as required by the laws of California. These laws provide that every person over the age of 18 years who obtains fish without first taking out a license is guilty of a misdemeanor. The license fee for residents is \$1; for nonresidents, \$3. These licenses may be obtained from any county clerk, from the State board of fish and game commissioners, at any hotel, lodge, or camp in the park, or at the general store in Yosemite Village. All fishing must be done in conformity with the State laws regarding open season, size of fish, and limit of catch, except as otherwise defined under regulation 6, page 37.

The fishing grounds most frequented by anglers and where good fishing may be had are enumerated below.

Yosemite Valley.—Here the Merced River has been stocked with eastern brook, rainbow, Loch Leven, brown, and more recently with steelhead and cutthroat. Practically all have thriven and exist in rather more than average size. Abundant natural food supply, however, makes them wary and slow to rise to the fly, and the angler to be successful must bring all his skill into play and be blessed with extraordinary patience.

Merced Canyon.—Between Yosemite Valley and El Portal eastern brook, rainbow, and brown trout are found, and fishing conditions are much the same as those obtaining in Yosemite Valley.

Little Yosemite Valley.—The Merced River in Little Yosemite Valley is well stocked with eastern brook and rainbow, which have done well, and the angler of even ordinary skill may readily obtain the limit catch in the course of a day.

Lakes Merced and Washburn.—Located near the headwaters of the Merced River, these lakes with their tributary streams afford some of the finest fishing in the high Sierra in eastern brook, Loch Leven, and rainbow. It is a poor angler who fails to secure his limit in any of these waters in a few hours, and in spite of the fact that this section is fished rather more extensively than any other, natural propagation, with the addition of limited annual stocking, maintains the species in abundance.

Tuolumne Meadows.—The Tuolumne River traversing these meadows, as well as the numerous lakes and streams in the section

tributary to them, abound in eastern brook, rainbow, and cutthroat. Within the entire section good fishing is found so far as numbers are concerned, but for some reason no variety attains the size of the same species as found in some other waters. In this section the better fishing is to be had in Dog Lake, Elizabeth Lake, Ireland Lake, Gaylor Lakes, and the Lyell Fork of the Tuolumne River.

Less frequented areas in the park provide from good to excellent fishing, most notable among which are the valley of Illilouette Creek with its tributaries; the Moraine Meadows in the southeastern part of the park where Johnson Lake, Buena Vista Lake, and Royal Arch Lake offer eastern brook and rainbow; Alder Creek Valley with the same species; the Middle Fork and the South Fork of the Tuolumne River in the western part of the park where plants of eastern brook and Loch Leven have been made and propagation of the species has continued; and in the Ten Lakes Basin on the south rim of the Grand Canyon of the Tuolumne River where eastern brook, Loch Leven, and steelhead are unusually plentiful.

It is in the northern canyons, however, where the greatest of all fishing grounds in the entire park are found. Many of the waters of that great area of 500 square miles or more north of the Tuolumne River were stocked years ago with rainbow and eastern brook. Conditions for continued propagation seem to have been exceedingly favorable, with the result that practically all of the lakes and streams now teem with fish life, and the fisherman who seeks fishing de luxe amid surroundings of the most fascinating grandeur of high-mountain scenery will find here a fulfillment of his most ambitious dreams and will be more than repaid for having braved the penetration of this relatively inaccessible portion of the park.

RULES AND REGULATIONS.

(Approved February 18, 1925, to continue in force and effect until otherwise directed by the Secretary of the Interior.)

GENERAL REGULATIONS.

The following rules and regulations for the government of the Yosemite National Park are hereby established and made public pursuant to authority conferred by the acts of Congress approved October 1, 1890 (26 Stat., 650), February 5, 1905 (33 Stat., 702), June 11, 1906 (34 Stat., 831), and the act of August 25, 1916 (39 Stat., 535), as amended June 2, 1920 (41 Stat., 732):

1. *Preservation of natural features and curiosities.*—The destruction, injury, defacement, or disturbance in any way of the public buildings, signs, equipment, or other property, or the trees, flowers, vegetation, rocks, mineral, animal, or bird, or other life is prohibited: *Provided*, That flowers may be gathered in small quantities when, in the judgment of the superintendent, their removal will not impair the beauty of the park.

2. *Camping.*—In order to preserve the natural scenery of the park and to provide pure water and facilities for keeping the park clean, permanent camp sites have been set apart for tourists visiting the park in their own conveyances, and no camping is permitted outside the specially designated sites. These camps have been used during past seasons; they will be used daily this year and for many years to come. It is necessary, therefore, that the following rules be strictly enforced for the protection of the health and comfort of the tourists who visit the park in their own conveyances.

(a) Combustible rubbish shall be burned on camp fires and all other garbage and refuse of all kinds shall be placed in garbage cans, or, if cans are not available, placed in the pits provided at the edge of camp. At new or unfrequented camps garbage shall be burned or carried to a place hidden from sight. *Keep the camp grounds clean.*

(b) There are thousands of visitors every year to each camp site in Yosemite Valley, and the water in the creeks and streams adjacent is not always safe to drink. The water supply provided is pure and wholesome and must be used. If, however, the water supply is

not piped to grounds, consult rangers for sources to use. Tourists out on hiking parties must not contaminate watersheds of water supplies. They are indicated by signs, pipe lines, and dams. *There is plenty of pure water; be sure you get it.*

(c) Campers and others shall not wash clothing or cooking utensils or pollute in any other manner the waters of the park, or bathe in any of the streams near the regularly traveled thoroughfares in the park without suitable bathing clothes.

(d) Stock shall not be tied so as to permit their entering any of the streams of the park. All animals shall be kept a sufficient distance from camping grounds in order not to litter the ground and make unfit for use the area which may be used later as tent sites.

(e) Wood for fuel only can be taken from dead or fallen trees.

3. *Camping in Yosemite Valley.*—All campers in Yosemite Valley shall first report at the office of the superintendent for assignment to camping sites, and shall not change camps without permission; nor shall fires be lighted in Yosemite Valley, except at camp sites, without the express permission of the superintendent.

4. *Fires.*—Fires constitute one of the greatest perils to the park; they shall not be kindled near trees, dead wood, moss, dry leaves, forest mold, or other vegetable refuse, but in some open space on rocks or earth. Should camp be made in a locality where no such open space exists or is provided, the dead wood, moss, dry leaves, etc., shall be scraped away to the rock or earth over an area considerably larger than that required for the fire.

Fires shall be lighted only when necessary and when no longer needed shall be completely extinguished, and all embers and bed smothered with earth or water, so that there remains no possibility of reignition.

Especial care must be taken that no lighted match, cigar, or cigarette is dropped in any grass, twigs, leaves, or tree mold.

5. *Hunting.*—The park is a sanctuary for wild life of every sort and all hunting or the killing, wounding, frightening or capturing at any time of any wild bird or animal, except dangerous animals, when it is necessary to prevent them from destroying human lives or inflicting personal injury is prohibited within the limits of said park.

The outfits, including guns, traps, teams, horses, or means of transportation of every nature or description used by any person or persons engaged in hunting, killing, trapping, ensnaring, or capturing birds or wild animals within the limits of said park shall be taken up by the superintendent and held subject to the order of the Director of the National Park Service. Possession within said park of the dead bodies or any part thereof of any wild bird or animal shall be prima facie evidence that the person or persons having same are

guilty of violating this regulation. Firearms are prohibited within the park except upon written permission of the superintendent. Visitors entering or traveling through the park to places beyond shall, at entrance, report and surrender all firearms, traps, nets, seines, or explosives in their possession to the first park officer, and in proper cases may obtain his written leave to carry them through the park sealed. The Government assumes no responsibility for loss or damage to any firearms, traps, nets, seines, or other property so surrendered to any park officer, nor are park officers authorized to accept the responsibility of custody of any property for the convenience of visitors.

NOTE.—*The foregoing regulation is in effect a declaration of the law on this subject contained in sections 5 and 6 of the act of Congress, approved June 2, 1920 (41 Stat., 732) accepting cession by the State of California of exclusive jurisdiction of the lands embraced within the Yosemite National Park, Sequoia National Park, and General Grant National Park, respectively, and for other purposes.*

This act by its terms applies to all lands within said park whether in public or private ownership.

6. *Fishing.*—Fishing with nets, seines, traps, or by the use of drugs or explosives, or in any other way than with hook and line, or for merchandise or profit, is prohibited. Fishing in particular water may be suspended, or the number of fish that may be taken by any one person in any one day from the various streams or lakes may be regulated by the superintendent. All fish hooked less than 6 inches long shall be carefully handled with moist hands and returned at once to the water, if not seriously injured. Fish retained shall be killed. The limit for a day's catch shall be 25 fish, or 10 pounds and one fish, or one fish weighing 10 pounds or over. Possession of more than this limit by any one person shall be construed as a violation of this regulation.

7. *Private operations.*—No person, firm, or corporation shall reside permanently, engage in any business, or erect buildings in the park without permission in writing from the Director of the National Park Service, Washington, D. C. Applications for such permission may be addressed to the director or to the superintendent of the park. Permission to operate a standard-size moving-picture camera, such as is used for commercial purposes, must be secured from the superintendent of the park.

8. *Gambling.*—Gambling in any form, or the operation of gambling devices, whether for merchandise or otherwise, is prohibited.

9. *Advertisements.*—Private notices or advertisements shall not be posted or displayed within the park, excepting such as the park superintendent deems necessary for the convenience and guidance of the public.

10. *Mining claims.* The location of mining claims is prohibited on Government lands in the park.

11. *Patented lands.*—Owners of patented lands within the park limits are entitled to the full use and enjoyment thereof; the boundaries of such lands, however, shall be determined, and marked and defined, so that they may be readily distinguished from the park lands. While no limitations or conditions are imposed upon the use of private lands so long as such use does not interfere with or injure the park, private owners shall provide against trespass by their live stock upon the park lands, and all trespasses committed will be punished to the full extent of the law. Stock may be taken over the park lands to patented private lands with the written permission and under the supervision of the superintendent, but such permission and supervision are not required when access to such private lands is had wholly over roads or lands not owned or controlled by the United States.

12. *Grazing.*—The running at large, herding, or grazing of live stock of any kind on the Government lands in the park, as well as the driving of live stock over same, is prohibited, except where authority therefor has been granted by the superintendent. Live stock found improperly on the park lands may be impounded and held until claimed by the owner and the trespass adjusted.

13. *Authorized operators.*—All persons, firms, or corporations holding franchises in the park shall keep the grounds used by them properly policed and shall maintain the premises in a sanitary condition to the satisfaction of the superintendent. No operator shall retain in his employment a person whose presence in the park may be deemed by the superintendent subversive of good order and management of the park.

All operators shall require each of their employees to wear a metal badge, with a number thereon, or other mark of identification, the name and the number corresponding therewith, or the identification mark, being registered in the superintendent's office. These badges must be worn in plain sight on the hat or cap.

14. *Dogs and cats.*—Dogs are not permitted on Government lands in the park, except that they may be transported through the park over the Tioga Road provided they are kept under leash while within the confines of the park.

Cats are prohibited, except that permits may be issued by the superintendent, in his discretion, to local residents and operators for protection against rodents.

15. *Dead animals.*—All domestic or grazed animals that may die on Government lands in the park, at any tourist camp, or along any of the public thoroughfares shall be buried immediately by the owner or person having charge of such animals at least 2 feet be-

neath the ground, and in no case less than one-fourth mile from any camp or thoroughfare.

16. *Travel on trails.*—Pedestrians on trails, when saddle or pack animals are passing them, shall remain quiet until the animals have passed.

Persons traveling on the trails of the park, either on foot or on saddle animals, shall not make short cuts, but shall confine themselves to the main trails.

17. *Travel—General.*—(a) Saddle horses, pack trains, and horse-drawn vehicles have right of way over motor-propelled vehicles at all times.

(b) On sidehill grades throughout the park motor-driven vehicles shall take the outer side of the road when meeting or passing vehicles of any kind drawn by animals; likewise, freight, baggage, and heavy camping outfits shall take the outer side of the road on sidehill grades when meeting or passing passenger vehicles drawn by animals.

(c) Load and vehicle weight limitations shall be those prescribed from time to time by the Director of the National Park Service and shall be complied with by the operators of all vehicles using the park roads. Schedules showing weight limitations for different roads in the park may be seen at the office of the superintendent and at the ranger stations at the park entrances.

(d) All vehicles shall be equipped with lights for night travel. At least one light must be carried on the left front side of horse-drawn vehicles in a position such as to be visible from both front and rear.

18. *Miscellaneous.*—(a) Campers and all others, save those holding licenses from the Director of the National Park Service, are prohibited from hiring their horses, trappings, or vehicles to tourists, visitors, or other persons in the park.

(b) The picking or removal in any way of fruit from any of the orchards in Yosemite Valley is prohibited, except under permit issued by the superintendent.

(c) All complaints by tourists and others as to service, etc., rendered in the park should be made to the superintendent, in writing, before the complainant leaves the park. Oral complaints will be heard daily during office hours.

19. *Fines and penalties.*—Persons who render themselves obnoxious by disorderly conduct or bad behavior shall be subjected to the punishment hereinafter prescribed for violation of the foregoing regulations, or they may be summarily removed from the park by the superintendent and not allowed to return without permission in writing from the Director of the National Park Service or the superintendent of the park.

Any person who violates any of the foregoing regulations shall be deemed guilty of a misdemeanor and shall be subject to a fine of not more than \$500 or imprisonment not exceeding 6 months or both, and be adjudged to pay all costs of the proceedings.

20. *Lost and found articles.*—Persons finding lost articles should deposit them at the nearest ranger station, leaving their own names and addresses, so that if not claimed by owners within 60 days articles may be turned over to those who found them.

AUTOMOBILE AND MOTORCYCLE REGULATIONS.

Pursuant to authority conferred by the acts of Congress approved October 1, 1890 (26 Stat., 650), and August 25, 1916 (39 Stat., 535), as amended June 2, 1920 (41 Stat., 732), the following regulations covering the admission of automobiles and motorcycles into the Yosemite National Park are hereby established and made public:

1. *Entrances.*—Automobiles and motorcycles may enter and leave the park by any of the entrances, viz, Tioga Pass, Aspen Valley, Crane Flat, Merced Grove, El Portal, Wawona, and Mariposa Grove.

2. *Automobiles.*—The park is open to automobiles operated for pleasure, but not to those carrying passengers who are paying, either directly or indirectly, for the use of machines (excepting, however, automobiles used by transportation lines operating under Government franchise), and any person operating an automobile in contravention of the provisions of this regulation may be deemed guilty of its violation.

Careful driving is demanded of all persons using the roads.

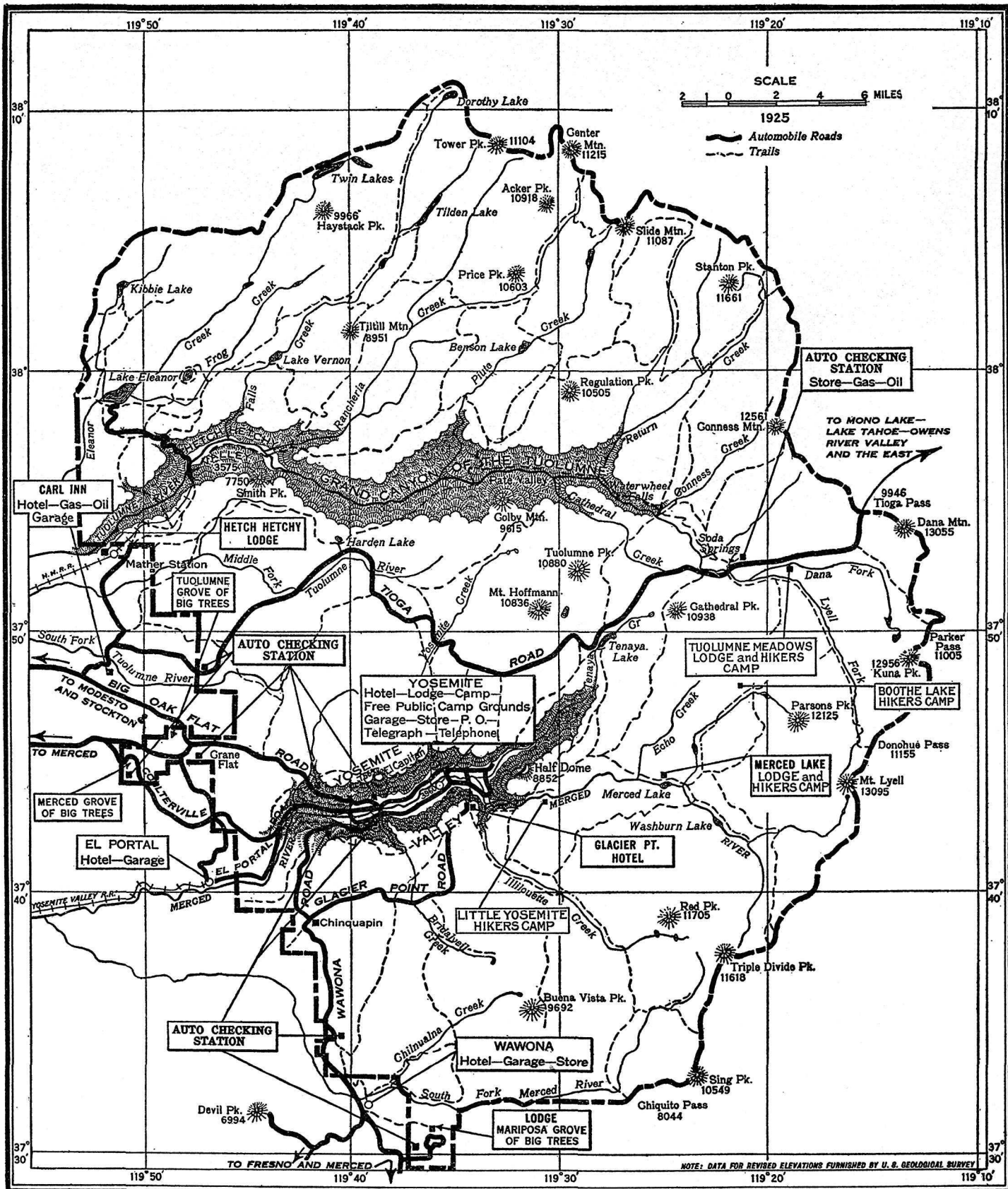
The Government is in no way responsible for any kind of accident.

3. *Motor trucks.*—Motor trucks are admitted to the park under the same conditions as automobiles, except that the entrance fee may be prescribed by the Director of the National Park Service according to tonnage capacity. They are subject to the same regulations, except that trucks of more than 3 tons' capacity are prohibited on any of the park roads other than the El Portal Road and the roads on the floor of Yosemite Valley, where the capacity limit of 5 tons is fixed.

4. *Motorcycles.*—Motorcycles are admitted to the park under the same conditions as automobiles and are subject to the same regulations, as far as they are applicable. Automobiles and horse-drawn vehicles shall have the right of way over motorcycles.

5. *Intoxication.*—No person who is under the influence of intoxicating liquor and no person who is addicted to the use of narcotic drugs shall operate or drive a motor vehicle of any kind on the park roads.

6. *Roads; hours.*—The Tioga Road is open from July 15 to September 30, Big Oak Flat Road from June 1 to November 1, and the Wawona Road from May 1 to November 1. Opening dates are approximate only, as they are dependent upon snow conditions in the high mountain country. Travel over any park road may be re-



MAP OF YOSEMITE NATIONAL PARK

stricted or entirely prohibited when in the judgment of the superintendent road conditions are unsuitable for travel.

The El Portal and Valley roads are open all of the year, except occasionally during the winter, when the Valley roads may be blocked with snow for short periods. These cases are rare, however, as the roads are cleared promptly after snowstorms.

Automobiles may enter or leave the park only between the hours of 7 a. m. and 10 p. m.

On the Big Oak Flat Road between Gentry (station No. 2) and Floor of Valley (station No. 1), 4 miles, and on the Wawona Road between Inspiration Point (station No. 3) and Floor of Valley (station No. 4), $2\frac{1}{2}$ miles, automobiles may go east, down grade, only on odd hours and may go west, up grade, only on even hours, speed in no case to exceed 12 miles per hour, except that between the hours of 6 a. m. and 9 a. m. these controls shall be opened for up-going traffic only; shall be closed entirely to up-going traffic between the hours of 8.30 p. m. and 6 a. m.; and shall be closed to down-going traffic between the hours of 9.30 p. m. and 9.30 a. m.

Automobiles shall travel between stations No. 1 and No. 2 on the Big Oak Flat Road within the hour, but in not less than 25 minutes, and between stations No. 3 and No. 4 on the Wawona Road within the hour, but in not less than 15 minutes.

7. *Permits.*—The permit shall be secured at the ranger station where the automobile enters, and will entitle the permittee to operate the particular automobile indicated in the permit over any or all of the roads in the park. It is good for the entire season, expiring on December 31 of the year of issue, but is not transferable to any other vehicle than that to which originally issued. The permit shall be carefully kept so that it can be exhibited to park rangers on demand. Each permit shall be exhibited to the park ranger for verification on exit from the park. Duplicate permits will not be issued in lieu of original permits lost or mislaid.

8. *Fees.*—Fees for automobile and motorcycle permits are \$5 and \$2, respectively, and are payable in cash only.

9. *Distance apart; gears and brakes.*—Automobiles while in motion shall be not less than 50 yards apart, except for purpose of passing, which is permissible only on comparatively level stretches of road or on slight grades. All automobiles, except while shifting gears, shall retain their gears constantly enmeshed. The driver of each automobile will be required to satisfy the ranger issuing the permit that all parts of his machine, particularly the brakes and tires, are in first-class working order and capable of making the trip; and that there is sufficient gasoline in the tank to reach the next place where it may be obtained. The automobile shall carry at least one extra tire. Motorcycles not equipped with brakes in good working order are not permitted to enter the park.

10. *Speeds.*—On the roads on the Floor of Yosemite Valley speed not to exceed 30 miles per hour is permitted on straight stretches of open road, but speed shall not exceed 15 miles per hour when passing through villages or camps, crossing bridges, passing vehicles or pedestrians, or rounding curves where visibility is obscured.

On all other roads in the park speed is limited to 12 miles per hour on grades and when rounding sharp curves. On straight, open stretches when no vehicle is nearer than 200 yards speed may be increased to 20 miles per hour.

Motor trucks of more than 1½-ton's capacity are limited to a speed of not to exceed 10 miles per hour on all park roads.

11. *Horns.*—The horn shall be sounded on approaching curves or stretches of road concealed for any considerable distance by slopes, overhanging trees, or other obstacles, and before meeting or passing other automobiles, motorcycles, riding or driving animals, or pedestrians.

12. *Lights.*—All automobiles shall be equipped with head and tail lights, the headlights to be of sufficient brilliancy to insure safety in driving at night, and all lights shall be kept lighted after sunset when automobile is on the roads. Headlights shall be dimmed when meeting other automobiles, motorcycles, riding or driving animals, or pedestrians.

13. *Muffler cut-out.*—Muffler cut-outs shall be kept closed on Valley Roads or while approaching or passing riding horses, horse-drawn vehicles, hotels, camps, or checking stations.

14. *Teams.*—When teams, saddle horses, or pack trains approach, automobiles shall take the outer edge of the roadway regardless of the direction in which they may be going, taking care that sufficient room is left on the inside for the passage of vehicles and animals. Teams have the right of way, and automobiles shall be backed or otherwise handled as may be necessary so as to enable teams to pass with safety. In no case shall automobiles pass animals on the road at a speed greater than 8 miles per hour.

15. *Overtaking vehicles.*—Any vehicle traveling slowly upon any of the park roads shall, when overtaken by a faster moving motor vehicle and upon suitable signal from such overtaking vehicle, give way to the right, in case of motor-driven vehicles, and to the inside, or bank side of the road, in case of horse-drawn vehicles, allowing the overtaking vehicle reasonably free passage, provided the overtaking vehicle does not exceed the speed limits specified for the road in question.

When automobiles, going in opposite directions, meet on a grade, the ascending machine has right of way, and the descending machine shall be backed or otherwise handled as may be necessary to enable the ascending machine to pass with safety.

16. Vehicles entering a main road from a secondary or private road shall yield right of way to all main road travel.

17. *Accidents; stop-overs.*—If, because of accident or stop for any reason, automobiles are unable to keep going, they shall be immediately parked off the road, or where this is impossible, on the outer edge of the road. If on a one-way road, the automobile must wait where parked for the next hour schedule going in its direction of travel. If for any reason the automobile is stopped on the floor of Yosemite Valley, it shall be parked off on the right-hand edge of the road.

18. *Parking.*—Parking of motor vehicles in Yosemite Village, Camp Curry, and Yosemite Lodge is limited to space provided for that specific purpose. Parking is not permitted within the confines of any lodge or hotel-camp or within any of the hotel grounds.

19. *Fines and penalties.*—Any person who violates any of the foregoing regulations shall be deemed guilty of a misdemeanor and shall be subject to a fine of not more than \$500 or imprisonment not exceeding six months or both, and be adjudged to pay all costs of the proceedings, or may be punished by revocation of the automobile permit and by immediate ejection from the park or by any combination of these penalties. Such violation shall be cause for refusal to issue a new automobile permit to the offender without prior sanction in writing from the Director of the National Park Service or the superintendent of the park.

20. *Time.*—Automobile drivers shall compare their watches with the clocks at checking stations.

21. *Reduced engine power, gasoline, etc.*—Due to the high altitude of the park roads, ranging from between 2,000 and 10,000 feet, the power of all automobiles is much reduced. A leaner mixture of gasoline and air is required, but on account of reduced engine power about 50 per cent more gasoline will be used per mile than is required at lower altitudes. Likewise, one gear lower will generally have to be used on grades than would have to be used in other places. A further effect that must be watched is the heating of the engine on long grades, which may become serious unless care is used. Gasoline can be purchased at regular supply stations as per posted notices.

Motorcycles equipped with single-speed engines will encounter serious difficulties in negotiating the heavy mountain grades, and drivers are warned against making the attempt with this class of machine.

22. *Garage.*—In Yosemite Valley automobiles may be housed at Camp Curry, Yosemite Lodge, and the general garage of the Yosemite Park & Curry Co. Complete repair garage service is provided at the Yosemite Park & Curry Co. garage. The Camp Curry garage provides a minor repair and adjustment service.

MAPS.

The following maps may be obtained from the Director of the United States Geological Survey, Washington, D. C., at prices given, postage prepaid. Remittances should be made by money order or in cash.

Map of Yosemite National Park, 28½ by 27 inches, scale 2 miles to the inch. Price 25 cents a copy flat; 40 cents a copy folded and bound between covers.¹

The roads, trails, and names are printed in black, the streams and lakes in blue, and the relief is indicated by brown contour lines.

Map of Yosemite Valley, 35 by 15½ inches, scale 2,000 feet to the inch. Price, 10 cents.¹

The woods, trails, and names are printed in black, the streams and lakes in blue, and the relief is indicated by brown contour lines.

PANORAMIC VIEW.

The view described below may be purchased from the Superintendent of Documents, Government Printing Office, Washington, D. C. Remittances should be made by money order or in cash.

Panoramic view of the Yosemite National Park, 18½ by 18 inches, scale 3 miles to the inch. Price, 25 cents.¹

This view is based on accurate surveys and gives an excellent idea of the configuration of the surface as it would appear to a person flying over it. Eight colors were used in the printing, the meadows and valleys being in light green, the streams and lakes in light blue, the cliffs and ridges in combinations of colors in order to give the haze effect characteristic of the region, and the roads in light brown. The lettering is printed in light brown, which is easily read on close inspection, but which merges into the basic colors when the sheet is held at some distance. The panorama is surrounded by a gray border, in order to make an effective background.

LITERATURE.**GOVERNMENT PUBLICATIONS.**

Government publications on Yosemite National Park may be obtained as indicated below. Separate communications should be addressed to the officers mentioned.

DISTRIBUTED FREE BY THE NATIONAL PARK SERVICE.

The following publications may be obtained free on written application to the Director of the National Park Service or by personal application to the office of the superintendent of the park.

Motorists' Guide Map and Manual, Yosemite National Park.

Shows the park road system, hotels, camps, garages, superintendent's office, routes to the park, etc. Also contains excerpts from automobile and motorcycle regulations, rates, and general park information.

¹ May be purchased also by personal application at the office of the superintendent of the park, but that office can not fill mail orders.

Rules and Regulations, Yosemite National Park.

Contains complete rules and regulations under which the park is governed; also rates and schedules for public utilities and detailed information on the park and its resources.

Glimpses of our National Parks, 59 pages, including 23 illustrations.

Contains description of the most important features of the principal national parks.

Map of National Parks and National Monuments.

Shows location of all the national parks and monuments, administered by the National Park Service, and all railroad routes to these reservations.

Automobile Map of Western United States.

Shows location of the national parks and monuments, the National Park-to-Park Highway, and other principal automobile highways.

SOLD BY THE SUPERINTENDENT OF DOCUMENTS.

The following publications may be obtained from the Superintendent of Documents, Government Printing Office, Washington, D. C., at the prices indicated, postage prepaid. Remittances should be made by money order or in cash.

The National Parks Portfolio. By Robert Sterling Yard. Third Edition. 248 pages, including 306 illustrations. Bound securely in cloth, one dollar.¹

Contains nine chapters, each descriptive of a national park, and one a larger chapter devoted to other parks and monuments.

Sketch of Yosemite National Park and an account of the origin of Yosemite and Hetch Hetchy Valleys, by F. E. Matthes, 48 pages, including 24 illustrations. Price, 10 cents.¹

This pamphlet contains a description of the general features of the Sierra Nevada and the Yosemite National Park and an account of the origin of the Yosemite and Hetch Hetchy Valleys.

The Secret of the Big Trees, by Ellsworth Huntington, 24 pages, including 14 illustrations. Price, 5 cents.¹

This pamphlet contains an account of the climatic changes that are indicated by the thickness of the growth rings in the big trees, and gives a comparative statement of the climatic conditions in California and Asia during a period of 3,400 years.

Forests of Yosemite, Sequoia, and General Grant National Parks, by C. L. Hill. 1916. 40 pages, including 23 illustrations. 10 cents.¹

Contains descriptions of the forest cover and of the principal species.

BIBLIOGRAPHY.

AFLALO, F. G. Sunset playgrounds. 1909. 251 pp., illustrated.
Yosemite on pp. 123-153.

BRYCE, JAMES. University and historical addresses. 1913. 433 pp.
National Parks—The need of the future, pp. 389-406.

BUNNELL, LAFAYETTE HOUGHTON. Discovery of the Yosemite; and the Indian war of 1851. [1897.] 349 pp.
Historical and descriptive.

¹ May be purchased also by personal application at the office of the superintendent of the park, but that office can not fill mail orders.

- CHASE, J. S. Cone-bearing trees of the California mountains. 1911. 99 pp., illustrated.
- Yosemite Trails; camp and pack train in the Yosemite region of the Sierra Nevada. 1911. 354 pp., illustrated.
- CHENEY, JOHN VANCE. At the Silver Gate. 1911. 94 pp.
- Poems: Includes the Voice of the Sequoia, Speech of the Yosemite Chief Tenieyah.
- CLARK, GALEN. Indians of the Yosemite Valley. 1904. 110 pp., illustrated.
- The Yosemite Valley. 1910. 108 pp.
- General description and notes on flora.
- The big trees of California. 1907. 104 pp., illustrated.
- CRONAU, RUDOLF. In wilden Westen. 1890. 383 pp., illustrated.
- Yosemite on pp. 259-275; Yellowstone on pp. 163-185.
- CUMMING, C. F. GORDON. Granite crags. 1884. 373 pp., illustrated.
- Yosemite on pp. 75-215.
- ELDER, PAUL, compiler. California, the Beautiful. Camera studies by California artists with selections in prose and verse from western writers. 1911. 75 pp., illustrated.
- Song birds in Yo Semite, by Olive Harper; Yosemite, poem, by Herman Scheffauer; Yosemite Valley, by John Muir; The Sequoias, poem, by L. A. Robertson; The Giant Forest, by Stewart Edward White.
- FINCK, H. T. Pacific coast scenic tour. 1890. 309 pp., illustrated.
- Yosemite on pp. 81-107; Yellowstone on pp. 279-293; Crater Lake on pp. 157-158; Mount Rainier on pp. 209-216.
- FOLEY, D. J. Yosemite souvenir and guide. 1911. 113 pp.
- FOUNTAIN, PAUL. The eleven eaglets of the West. London, 1906. 362 pp.
- An account of travels in 11 far western States and Territories. Yosemite on pp. 21-27; Crater Lake on pp. 46-49; Mount Rainier on pp. 110-112; Yellowstone on pp. 173-195.
- GEOLOGICAL SURVEY of California. The Yosemite Book. 1868. 116 pp., illustrated.
- GUNNISON, ALMON. Rambles overland. 1884. 245 pp.
- Yosemite on pp. 125-156; Yellowstone on pp. 27-82.
- HALL, ANSEL F. Guide to Yosemite. 1921. 98 pp.
- A handbook of the trails and roads of Yosemite Valley and the adjacent region.
- Handbook of the Yosemite National Park, 1921. 347 pp., illustrated.
- HALL, H. M. and C. C. A Yosemite flora. 1912. 282 pp.
- A descriptive account of the ferns and flowering plants, including the trees, with keys for identification.
- HERBERTSON, F. D. and A. J. Descriptive geography from original sources; North America. 1901. 252 pp.
- Yosemite on pp. 194-196; Yellowstone on pp. 171-180; Crater Lake on pp. 166-167.
- HESSE-WARTEGG, ERNEST VON. Nord-Amerika; Seine Städte und Naturwunder. 3 vols. 1880.
- Yosemite in vol. 2, pp. 130-144; Yellowstone in vol. 2, pp. 228-242.
- HIFSCHBERG, JULIUS. Von New York nach San Francisco; Tagebuchblätter, 1888. 276 pp.
- Yosemite on pp. 190-201; Yellowstone on pp. 77-111.

- HUDSON, T. S. *A scamper through America.* 1882. 289 pp.
Yosemite on pp. 158-175.
- HUTCHINGS, J. M. *In the heart of the Sierras.* 1886. 496 pp., illustrated.
Historical and descriptive.
- JEFFERS, LE ROY. *The Call of the Mountains.* 282 pp., illustrated. Dodċ,
Mead & Co. 1922.
Yosemite on pp. 134-147.
- JEPSON, W. L. *The silva of California: Memoirs of the University of California,*
vol. 2, 1910. 480 pp., illustrated.
— *The trees of California.* 1909. 228 pp., illustrated.
- JOHNSON, CLIFTON. *Highways and byways of the Pacific Coast.* 1907. 323 pp.,
illustrated.
Yosemite on pp. 143-165.
- KING, CLARENCE. *Mountaineering in the Sierra Nevada.* 1902. 378 pp.
Yosemite on pp. 165-190.
- KIRCHOFF, THEODORE. *Californische Kulturbilder.* 1886. 376 pp.
Yosemite on pp. 134-153.
- MARSHALL, W. G. *Through America.* 1881. 424 pp.
Yosemite on pp. 345-386.
- MILLS, ENOS A. *Your National Parks.* 532 pp., illustrated. Houghton, Mifflin
Co., 1917.
Yosemite on pp. 65-98; 444-454.
- MORRIS, MRS. JAMES EDWIN. *A Pacific coast vacation.* 1901. 255 pp., illus-
trated.
Yosemite on pp. 191-209; Yellowstone on pp. 236-255.
- MUIR, JOHN. *My first summer in the Sierra.* 1911. 354 pp.
Devoted mostly to the Yosemite.
— *Our National Parks.* 1909. 382 pp., illustrated.
Yosemite on pp. 76-267; Sequoia and General Grant on pp. 268-330; Yellow-
stone on pp. 37-75; Wild Parks of the West, pp. 1-36.
— *The mountains of California.* 1894. 382 pp., illustrated.
— *The Yosemite.* 1912. 284 pp., illustrated.
- MURPHY, THOMAS D. *Three Wonderlands of the American West.* 1912. 180
pp., illustrated.
Yosemite on pp. 59-109; Yellowstone on pp. 1-58. Contains color reproduc-
tions of Moran's paintings.
- PECK, J. K. *The seven wonders of the new world.* 1885. 320 pp.
Yosemite on pp. 205-244, 284-320; Yellowstone on pp. 71-114.
- PIERREPONT, EDWARD. *Fifth Avenue to Alaska.* 1884. 329 pp.
Yosemite on pp. 58-68; Yellowstone on pp. 237-311.
- PORTER, T. C. *Impressions of America.* 1899. 241 pp., illustrated.
Yosemite on pp. 108-142; Yellowstone on pp. 24-93.
- QUINN, VERNON. *Beautiful America.* 333 pp., illustrated. Frederick A. Stokes
Co., New York City. 1923.
Yosemite on pp. 246-251.
- REIK, Lt. Col. H. OTTRIDGE. *A tour of America's National Parks.* 209 pp.,
illustrated. 1921.
Yosemite on pp. 79-101.
- SCHAUFFLER, R. H. *Romantic America.* 1913. 339 pp.
Yosemite on pp. 192-224; Yellowstone on pp. 134-160.
- SCHLAGINTWEIT, ROBERT VON. *Californien.* 1871. 380 pp.
Yosemite on pp. 179-212.

- SENN, NICHOLAS.** Our National Recreation Parks. 1904. 147 pp., illustrated.
Yosemite on pp. 93-147; Yellowstone on pp. 17-92. Contains notes on fauna and flora in addition to descriptive matter.
- SMITH, BERTHA H.** Yosemite Legends. 1904. 64 pp.
- STODDARD, CHARLES AUGUSTUS.** Beyond the Rockies. 1894. 214 pp., illustrated.
Yosemite on pp. 117-142.
- SYMMEs, HAROLD.** Songs of Yosemite. 1911. 44 pp., illustrated.
Poems.
- THAYER, JAMES BRADLEY.** A western journey with Mr. Emerson. 1884. 141 pp.
Yosemite on pp. 68-110.
- TISSANDIER, ALBERT.** Six mois aux Etats Unis. [1886.] 298 pp.
Yosemite on pp. 139-165; Yellowstone on pp. 170-188.
- TOMLINSON, EVERETT T.** Four boys in the Yosemite. [1911.] 405 pp.
- TORREY, BRADFORD.** Field days in California. 1913. 235 pp.
Yosemite on pp. 170-203.
- WEBB, WILLIAM SEWARD.** California and Alaska. 1891. 268 pp., illustrated.
Yosemite on pp. 81-102.
- WILEY, WILLIAM H. and SARA K.** The Yosemite, Alaska, and the Yellowstone. [1893.] 230 pp., illustrated.
Yosemite on pp. 110-124; Yellowstone on pp. 205-230.
- WILLIAMS, JOHN H.** Yosemite and its High Sierra. New edition, revised and enlarged, with more than 250 illustrations, maps, etc. 1921. 194 pp.
- WINIFRED, LADY HOWARD, of Glossop.** Journal of a tour in the United States, Canada, and Mexico. 1897. 355 pp.
Yosemite on pp. 81-100.
- YARD, ROBERT STERLING.** The Top of the Continent. 1917. 244 pp., illustrated.
Yosemite on pp. 161-187.
- The Book of the National Parks. 1919. 420 pp., 76 illustrations, 16 maps and diagrams.
Yosemite on pp. 36-68.

OTHER NATIONAL PARKS.

Rules and regulations similar to this for the national parks listed below may be obtained free of charge by writing to the Director of the National Park Service, Washington, D. C.:

- | | |
|-----------------------------|------------------------------------|
| Crater Lake National Park. | Mount Rainier National Park. |
| Glacier National Park. | Rocky Mountain National Park. |
| Grand Canyon National Park. | Sequoia and General Grant National |
| Hawaii National Park. | Parks. |
| Hot Springs National Park. | Wind Cave National Park. |
| Lafayette National Park. | Yellowstone National Park. |
| Mesa Verde National Park. | |

AUTHORIZED RATES FOR PUBLIC UTILITIES, SEASON OF 1925.

All rates of the authorized public utilities are approved by the Government. Therefore complaints regarding overcharges should be made to the superintendent. Employees of the hotels, camps, and transportation lines are not Government employees, but discourteous treatment by public-utility employees should be reported to the park administration.

HOTELS, LODGES, AND CAMPS.

IMPORTANT NOTICE.—The closing of schools in California always brings a rush of visitors to the park immediately after June 15, and from that date to July 20 accommodations are usually all engaged in advance. Prospective visitors to the park, except those contemplating camping with their own outfits in the free public camping grounds, are warned, therefore, against undertaking the trip during that period without having applied in advance for reservations and having received confirmation of same.

Rates authorized herein are subject to change without notice on approval by the Director, National Park Service. Authorized changes in rates will be posted for public information in the park.

YOSEMITE PARK & CURRY CO.—HOTELS, LODGES, AND CAMPS.

The following hotels, permanent lodges, and camps in the park are operated by the Yosemite Park & Curry Co.:

HOTELS, LODGES, AND CAMPS.

	Opening date.	Closing date.
Yosemite Lodge (summer season) (see p. 51)-----	May 1	Oct. 1
Camp Curry (summer season) (see p. 54)-----	Apr. 26	Oct. 1
Sentinel Hotel (winter season) (see p. 51)-----	Oct. 1	Apr. 30
Glacier Point Mountain House (see p. 52)-----	May 15	Nov. 1
Big Trees Lodge (see p. 53)-----	June 1	Sept. 1
Hetch Hetchy Lodge (see p. 53)-----	June 1	Sept. 1
Tuolumne Meadows Lodge (see p. 53)-----	July 10	Sept. 15
Housekeeping camps (see p. 73)-----	Apr. 15	Nov. 1
Hikers' camps (see p. 73)-----	June 1	Sept. 1

RESERVATIONS AT HOTELS AND LODGES.

For reservations at hotels, lodges, and camps apply to Yosemite Park & Curry Co., at addresses given below:

511 South Spring Street, Los Angeles, Calif.
689 Market Street, San Francisco, Calif.
Yosemite National Park, Calif.

HOTEL RATES.

The rates quoted will be effective for the 1925 season.

Children, not transients, 5 years of age and under, no charge; 6 to 10 years of age, one-half rate; 11 years of age and over, full rate.

SENTINEL HOTEL.

(American and European plan. Open October 1 to April 30.)

Rooms with bath, one or more persons in a room, per person per day, American plan-----	\$9.00
Rooms without bath, one or more persons in a room, per person per day, American plan-----	7.50
Rooms without bath, one or more persons in a room, per person per day, European plan-----	2.00
Meals will be served European plan guests in cafeteria.	
Train box lunch (regular)-----	.50
Train box lunch (special)-----	1.25
Tub and shower baths in detached rooms, each-----	.50

Transient American plan meal rates: Breakfast, \$1.25; luncheon, \$1.75; dinner, \$2; total for meals, \$5; balance for lodging.

During periods of heavy travel individual guests demanding exclusive occupancy of room will be charged an additional amount of \$1.50 per day, on either American or European plan.

Guests remaining one week or more during the periods October 1 to December 21 and March 1 to April 30 will be allowed a reduction of 25 per cent from American and European rates quoted.

Capacity, 150; elevation, 3,960 feet; situated in Yosemite Village, Yosemite Valley (14 miles from El Portal, terminus of Yosemite Valley Railroad), on the south bank of the Merced River; directly opposite Yosemite Falls. Sentinel Hotel is a starting point for all trips and tours and has motor service of the Yosemite Transportation System, daily the year round, from and to El Portal. All rooms are electrically heated.

YOSEMITE LODGE.

(American and European plan. Open May 1 to October 1.)

Redwood cabins with private bath, two persons in a single cabin or half of a double cabin, per person per day, American plan-----	\$8.50
Redwood cabins with private bath, three or more persons in a single cabin or half of a double cabin, per person per day, American plan--	8.00
Redwood or canvas cabins without bath, two persons in cabin, per person per day, American plan-----	6.00
Canvas cabins without bath, two or more persons in cabin, European plan, lodging only, per person per day-----	2.00 and 1.50
Meals will be served European plan guests in the cafeteria.	
Train box lunch (regular)-----	.50
Train box lunch (special)-----	1.25
Tub and shower baths in detached rooms-----	.50

Transient American plan meal rates: Breakfast, \$1.25; luncheon, \$1.75; dinner, \$2; lodging with bath, \$4; lodging without bath, \$2.

During periods of heavy travel individual guests demanding exclusive occupancy of rooms will be charged an additional amount of \$2.50 per day.

Capacity, 1,300; elevation, 3,980 feet; centrally located in Yosemite Valley (14 miles from El Portal, terminus of Yosemite Valley Railroad), convenient to Yosemite Village, all roads, trails, and points of interest. Yosemite Lodge is a starting point for all trips and tours of the Yosemite Transportation System, and has twice daily motor service to and from El Portal.

Yosemite Lodge is a colony of redwood cabins and canvas cabins in the pine woods, with central group buildings, including dining room, office, lounge, and writing room, swimming pool, tennis courts, laundry, children's playgrounds, and dance pavilion. Camp fire, outdoor dancing, and interesting entertainments each evening.

Redwood cabins with private baths have front porch, living room with twin beds, and many have in addition screened sleeping porch with twin beds.

Redwood cabins without private bath have living and sleeping compartments and twin beds.

Canvas cabins have twin beds.

OTHER AUTHORIZED CHARGES AT YOSEMITE LODGE.

	Adults.	Children.
Swimming pool:		
Admission-----	\$0. 10	\$0. 10
Swimming, including admission-----	. 50	. 35
Swimming, including admission, 5 tickets, not transferable-----	2. 00	1. 50
Swimming and diving lessons in addition to swimming charges:		Adults or children.
Individual lesson-----		\$2. 00
Eight individual lessons-----		10. 00
Class lessons—2 persons-----		3. 00
Class lessons—3 persons-----		3. 50
Class lessons—4 persons-----		4. 00
Barber shop:		Adults.
Hair cut-----		\$0. 50
Beard trimmed-----		. 50
Face massage-----		. 50
Men's shampoo (plain)-----		. 50
Men's shampoo (tonic)-----		. 75
Men's shampoo (oil)-----		1. 00
Hair singe-----		. 35
Shave-----		. 25
Head massage-----		. 50
All tonics-----		. 25
Shoe shine-----		. 15
Puttees-----		. 25
Boots or high shoes-----		. 25
Manicure-----		. 75
Ladies' hairdressing:		
Harper shampoo-----		1. 25
Harper dry treatment-----		1. 25
Harper facials-----		1. 50
Plain curl-----		. 35
Water wave-----		1. 00
Automobile storage at garage, per car per night-----		. 50
Parking space free.		

GLACIER POINT MOUNTAIN HOUSE.

(European plan. Open May 15 to November 1.)

Rooms with private bath, valley side, two persons in rooms, per person per day, lodging only-----	\$5. 00
Rooms with private bath, mountain side, two persons in room, per person per day, lodging only-----	4. 50
Rooms without private bath, with running water, valley side, two persons in room, per person per day, lodging only-----	3. 00
Rooms without private bath, with running water, mountain side, two persons in room, per person per day, lodging only-----	2. 50
Rooms without private bath, in Annex, two persons in room, per person per day, lodging only-----	2. 00
Meals will be served guests in cafeteria.	
Tub and shower baths in detached rooms, each-----	. 50

During periods of heavy travel individual guests demanding exclusive occupancy of room will be charged an additional amount of \$1.50 per day for room with bath and \$1 per day for room without bath.

Capacity, 150; elevation, 7,214 feet; situated at Glacier Point, 3,254 feet above and overlooking the Yosemite Valley, commanding a magnificent panorama of the High Sierra. Reached from Yosemite Valley by horseback, or hiking trip of 4 miles, and, beginning about June 15, by daily motor-car service of the Yosemite Transportation System.

BIG TREES LODGE.

(European plan. Open June 1 to September 1.)

Redwood cabins, 2 persons in cabin, European plan, lodging only, per person per day----- \$2.00
Tub and shower baths in detached rooms, each----- .50

Meal service, cafeteria style.

During periods of heavy travel individual guests demanding exclusive occupancy of cabin will be charged an additional amount of \$1 per day.

Capacity, 30; elevation, 6,000 feet, situated in the heart of the Mariposa Grove of Big Trees, on the Wawona Road, 35 miles from Yosemite Valley. Motor cars of the Yosemite Transportation System operate daily in season from Yosemite Valley to Big Trees Lodge, returning via Glacier Point to Yosemite Valley.

Big Trees Lodge consists of rustic dining room built around the big tree Montana and group of redwood cabins; the cabins having living and sleeping compartments and twin beds.

HETCH HETCHY LODGE.

(European plan. Open June 1 to September 1.)

Wooden cabins, 2 persons in cabin, European plan, lodging only, per person per day----- \$2.00
Tub and shower baths in detached rooms, each----- .50

During periods of heavy travel individual guests demanding exclusive occupancy of cabin will be charged an additional amount of \$1 per day.

Meal service, à la carte style.

Capacity, 75; elevation, 4,520 feet, situated at Mather, 9 miles from Hetch Hetchy Valley and 30 miles from Yosemite Valley. Motor cars of the Yosemite Transportation System run daily from Yosemite Valley to Hetch Hetchy Lodge and return; connection with rail-motor service to and from Hetch Hetchy Valley.

Hetch Hetchy Lodge consists of central building, containing dining room, and wooden cabins with living and sleeping compartments and twin beds.

TUOLUMNE MEADOWS LODGE.

(European plan. Open July 10 to September 15.)

Canvas cabins, two persons in cabin, European plan, lodging only, per person per day----- \$2.00
Tub and shower baths in detached rooms, each----- .50

During periods of heavy travel individual guests demanding exclusive occupancy of cabin will be charged an additional amount of \$1 per day.

Meal service: Breakfast, \$1.25; lunch, \$1.50; dinner, \$1.75.

Capacity, 100; elevation, 8,600 feet; situated 69 miles from Yosemite Valley via Tioga Road, near eastern boundary of park. Good fishing in near-by streams and center of many trails for hiking and saddle trips.

Tuolumne Meadows Lodge consists of central building, containing dining room, and canvas cabins with living and sleeping compartments with twin beds.

CAMP CURRY.

Established in 1899, Camp Curry is the pioneer camp in Yosemite Valley. Situated on the south side of the valley, 1 mile east of Yosemite Village and directly beneath Glacier Point, its tents and bungalows are set among a forest of cedar, pine, and fir convenient to all roads, trails, and points of interest.

It is a starting point for all trips and tours and has twice daily automobile service from and to El Portal.

Camp Curry is a community center with complete service in its central buildings for all tourist needs. There are 100 bungalow rooms with private bath, 650 tents for American plan guests, and 150 tents for European plan guests. Central buildings include offices, dining room, cafeteria, swimming pool, soda fountain, photographic studio, bowling alley and pool hall, auditorium, grocery, delicatessen, meat market, service garage, etc. Camp fire and interesting entertainment each evening.

	Opening date.	Closing date.
Tent section	Apr. 26	Oct. 1
Housekeeping camp section.....	June 1	Sept. 1
Bungalow section.....	Apr. 26	Oct. 1-15

Authorized rates, board and lodging (American plan).	In tents.		In bungalows with private bath.	
	2 adults in tent (each).	1 adult in tent.	2 adults in room. (each).	1 adult in room.
Per day.....	\$4.00	\$5.00	\$6.50	\$8.00
Per week.....	28.00	35.00	45.50	56.00
Four weeks.....	100.00	128.00	170.00	210.00

During periods of heavy travel individual guests demanding exclusive occupancy of rooms will be charged an additional amount of \$2.50 per day.

*Children's rates.***American plan:**

Children 8 years and over, adult rates.

Children 5 to 8, per day..... \$2.50

Children 3 to 5, per day..... 2.00

Children under 3, for those occupying separate bed or place at table, per day..... 1.50

European plan:

Children 8 years and over, adult rates.

Children under 8, half rates.

Transient meal rates.

Breakfast.....	\$1.00
Lunch.....	1.00
Dinner.....	1.25
Tray service, per person.....	.25

European plan.

(Tents only.)

	Two adults in tent (each).	One adult in tent.
Per day.....	\$1.50	\$2.50
Per week.....	10.50	17.50
Four weeks.....	37.50	60.00

Children's rates.

Eight years and over, adult rates; under 8, half rates.

Housekeeping camp.

(Tents only.)

	One person.	Two persons.	Additional persons (each).
First week.....	\$10.50	\$17.00	\$3.50
Per week thereafter.....	8.50	15.00	3.00

Housekeeping section schedules.

ARTICLES INCLUDED IN HOUSEKEEPING OUTFIT.

Awning.	Forks:	Rolling pin.
Baking dish.	Dinner.	Sauce dishes.
Basting pan.	Large.	Saucers.
Bed.	Grater.	Shakers:
Biscuit cutter.	Knives:	Salt.
Blankets (2 pair).	Butcher.	Pepper.
Bowls:	Chopping.	Skillets (2).
Chopping.	Dinner.	Slop jar.
Mixing.	Paring.	Spoons:
Soup.	Mattress.	Large.
Broom.	Muffin pan.	Table.
Can opener.	Pail (galvanized).	Tea.
Chairs.	Pancake turner.	Stove.
Coffeepot.	Pans:	Sugar bowl.
Creamer.	Biscuit.	Sirup pitcher.
Cups.	Pudding.	Table.
Cupboard.	Sauce.	Teakettle.
Cruets (2).	Plates:	Teapot.
Dish pan.	Large.	Tea strainer.
Double boiler.	Small.	Tent.
Dustpan.	Pie tins.	Vegetable dishes.
Egg beater.	Pillows.	Washstand dresser.
Flour sieve.	Potato masher.	Water pitcher.

RATES FOR ADDITIONAL ARTICLES RENTED.

	Week.	Month.		Week.	Month.
Ax.....	\$0.25	\$0.75	Kettles, tea.....	\$0.20	\$0.60
Bake pan.....	.10	.25	Knives:		
Basin.....	.10	.30	Table.....	.05	.15
Bowls, mush.....	.05	.15	Butcher.....	.10	.30
Blankets.....	1.00	3.00	Lantern.....	.25	.75
Brooms.....	.20	.60	Mirrors.....	.25	.75
Buckets.....	.15	.45	Pie tins.....	.05	.15
Candlestick.....	.05	.15	Pillows.....	.20	.60
Can opener.....	.05	.15	Pitchers.....	.10	.25
Chairs.....	.35	1.00	Plates.....	.05	.15
Camp stools.....	.25	.75	Rakes.....	1.10	-----
Coffeepot.....	.10	.30	Saucers.....	.05	.15
Cot, mattress, and pillow (single).....	1.25	3.75	Shovels.....	1.10	-----
Cups.....	.05	.15	Slop jars.....	.25	.75
Dairy pan.....	.05	.15	Spoons.....	.05	.15
Dish pans.....	.15	.45	Tables.....	.50	1.50
Flatirons.....	.15	.45	Tents: ²		
Forks.....	.05	.15	10 by 10.....	2.00	6.00
Frying pan.....	.10	.30	12 by 12.....	2.50	7.50
Hammocks.....	.50	1.50			

¹ Per day.

² Extra canvas according to size.

Swimming pool and bathhouse.

Tub or shower baths.....	\$0.50
5 tickets for.....	2.00
Plunge baths, including shower, towels, bathing suit.....	.50
5 tickets for.....	2.00

Barber shop.

Hair cut	\$0.50
Hair singe35
Beard trimmed50
Shave25
Face massage50
Head massage50
Men's shampoo:	
Plain50
Tonic75
Oil	1.00
Shoe shine15
White or special shine25
Puttees25
High boots or shoes25

Beauty parlor.

Shampoos	1.00-1.50
Dry treatment	1.25
Facial treatment	1.00
Plain curl50
Water wave	1.25
Marcel	1.25
Bob marcel	1.25
All tonics25
Eyebrow50
Manicure75

Garage.

Storage, per day50
Mechanic, per hour	2.00
Helper, per hour	1.50
Washing:	
Roadster or five-passenger cars	3.00
Seven-passenger cars	3.50
Coupés	4.00
All other inclosed cars	5.00
Wire wheels per car extra50

Miscellaneous.

Heater, per day50
Moving-picture show, per person, per hour10
Dancing, not to exceed per couple per evening25
Soda fountain and cafeteria (prices standard under similar conditions).	

IMPORTANT NOTICE.—The closing of schools in California always brings a rush of visitors to the park immediately after June 15, and from that date to July 20 accommodations are usually all engaged in advance. Prospective visitors to the park, except those contemplating camping with their own outfits in the free public camping grounds, are warned, therefore, against undertaking the trip during that period without having applied in advance for reservations and having received confirmation of same.

Rates authorized herein are subject to change without notice on approval by the Director, National Park Service. Authorized changes in rates will be posted for public information in the park.

AUTOMOBILE TRANSPORTATION TO AND WITHIN THE PARK.

YOSEMITE STAGE & TURNPIKE CO. (HORSESHOE ROUTE).

The Yosemite Stage & Turnpike Co. operates daily automobile stage service between Merced, Calif., and Yosemite Valley via Wawona, Mariposa Grove of Big Trees, and Glacier Point.

Authorized rates.

	One way.	Round trip.
Between Merced and Yosemite Valley, including tour of Mariposa Grove of Big Trees.....	\$15.00	\$24.50
Between Merced and Yosemite Valley, without tour of Mariposa Grove of Big Trees.....	14.25	
Between Merced and Wawona, including tour of Mariposa Grove of Big Trees.....	9.75	15.00
Between Wawona and Yosemite Valley.....	5.50	9.50
Between Wawona and Mariposa Grove of Big Trees:		
1 to 3 persons, each.....		4.50
4 to 6 persons, each.....		3.50
Side trip, Chinquapin to Glacier Point and return, in connection with tickets which read in either direction for passage between Wawona and Yosemite.....		5.00

Meals and lodging, en route are additional.

Children's fares.

Children between the ages of 5 and 12 years, one-half fare; under 5 years free unless occupying seat when one-half fare will be charged.

General information.

Dates of sale.—Tickets are on sale from May 1 to October 15.

Limits.—One-way tickets and round-trip tickets are good for the season and for continuous passage.

Stop-overs.—Stop-overs on Yosemite Stage & Turnpike Co. tickets will be permitted at Miami Lodge, Wawona, Glacier Point, and resorts in Yosemite Valley within final limit of tickets and operating season.

Special cars.—Special autos when available will be furnished for seven full-fare tickets reading for passage in either direction between Merced and Yosemite Valley or intermediate points.

Baggage.—Forty pounds of hand baggage will be allowed each full-fare passenger and 20 pounds on each half-fare ticket. Trunks will not be carried except when special arrangements are made in advance with agents. When proper arrangements have been made, the charge for trunks weighing 150 pounds or less will be \$2 between Merced and Miami Lodge or Wawona, and \$1 between Miami Lodge or Wawona and Yosemite or Glacier Point. Excess weight at rate of 1½ cents per pound.

General agents.—The Peck-Judah Co., San Francisco, Calif., 672 Market Street; Los Angeles, Calif., 732 South Spring Street; Seattle, Wash., 118 Cherry Street.

**DAILY AUTOMOBILE SCHEDULES BETWEEN MERCED AND
YOSEMITE.**

EFFECTIVE MAY 1, 1925.

Office and depot, El Capitan Hotel, Merced, Calif.

Through in one day schedule.

Lv. Merced	8.30 a. m.	Lv. Yosemite National	
Ar. Miami Lodge	11.45 a. m.	Park	7.30 a. m.
Lv. Miami Lodge	12.45 p. m.	Ar. Inspiration Point	8.15 a. m.
Ar. Mariposa Big Trees	1.45 p. m.	Lv. Inspiration Point	8.30 a. m.
Lv. Mariposa Big Trees	3.00 p. m.	Lv. Chinguapin	9.00 a. m.
Ar. Wawona	4.00 p. m.	Ar. Wawona	10.00 a. m.
Lv. Wawona	5.00 p. m.	Lv. Wawona	10.15 a. m.
Lv. Chinguapin	6.00 p. m.	Ar. Mariposa Big Trees	11.00 a. m.
Ar. Inspiration Point	6.45 p. m.	Lv. Mariposa Big Trees	12.00 m.
Lv. Inspiration Point	7.00 p. m.	Ar. Miami Lodge	1.00 p. m.
Ar. Yosemite National		Lv. Miami Lodge	1.45 p. m.
Park	7.30 p. m.	Ar. Merced	5.00 p. m.

Lunch at Miami Lodge on above schedules.

Wawona direct via Chowchilla Mountain Road.

CANNON BALL SERVICE.

Lv. Merced	2.00 p. m.	Automobiles will leave Wawona daily	
Ar. Wawona (overnight)	5.45 p. m.	at 1.15 p. m., via Chowchilla Mountain	
Lv. Wawona	10.15 a. m.	Road; arriving Merced at 5 p. m.	
Ar. Mariposa Big Trees	11.00 a. m.	Passengers leaving Yosemite or Glac-	
Lv. Mariposa Big Trees	3.00 p. m.	ier Point at 7.30 a. m. will transfer	
Ar. Wawona	4.00 p. m.	at Wawona and use the Cannon Ball	
Lv. Wawona	5.00 p. m.	to Merced, unless routed via the Mari-	
Ar. Yosemite	7.30 p. m.	posa Big Trees.	

Glacier Point schedules.

Lv. Merced	8.30 a. m.	Lv. Yosemite National	
Ar. Miami Lodge	11.45 a. m.	Park	3.30 p. m.
Lv. Miami Lodge	12.45 p. m.	Ar. Inspiration Point	4.15 p. m.
Ar. Mariposa Big Trees	1.45 p. m.	Lv. Inspiration Point	4.20 p. m.
Lv. Mariposa Big Trees	3.00 p. m.	Lv. Chinguapin	5.00 p. m.
Ar. Wawona (overnight)	4.00 p. m.	Ar. Glacier Point (over-	
Lv. Wawona	7.00 a. m.	night)	6.00 p. m.
Lv. Chinguapin	8.00 a. m.	Lv. Glacier Point	7.30 a. m.
Ar. Glacier Point	9.30 a. m.	Lv. Chinguapin	9.00 a. m.
Lv. Glacier Point	10.45 a. m.	Ar. Wawona	10.00 a. m.
Lv. Chinguapin	12.15 p. m.	Lv. Wawona	10.15 a. m.
Ar. Inspiration Point	12.45 p. m.	Ar. Mariposa Big Trees	11.00 a. m.
Lv. Inspiration Point	1.00 p. m.	Lv. Mariposa Big Trees	12.00 m.
Ar. Yosemite National		Ar. Miami Lodge	1.00 p. m.
Park	1.30 p. m.	Lv. Miami Lodge	1.45 p. m.
		Ar. Merced	5.00 p. m.

Lunch at Miami Lodge on above schedules.

Additional service will be given as may be required by traffic conditions.

YOSEMITE TRANSPORTATION SYSTEM.

The Yosemite Transportation System of the Yosemite Park & Curry Co. operates an automobile transportation service; connection with railroads at El Portal and Tahoe covering all points of interest reached by motor roads in Yosemite National Park and between Yosemite Valley and Lake Tahoe via the Tioga Pass Route.

The 1925 calendar of motor-car operations follows:

January 1 to April 30:

Daily service between El Portal and Yosemite Valley.

Daily tour of Yosemite Valley.

May 1 to May 31:

Daily service between El Portal and Yosemite Valley.

Daily tour of Yosemite Valley.

Daily service from Yosemite Valley to Mariposa Grove of Big Trees and return, via Artist Point, Inspiration Point, and Wawona.

June 1 to July 14:

Daily service between El Portal and Yosemite Valley.

Daily tour of Yosemite Valley.

Daily operation of "Y T S" motor tour of Yosemite National Park, from Merced via El Portal, including Canyon of the Merced River, El Portal, Yosemite Valley, Rainbow View, Tuolumne Grove of Big Trees, Hetch Hetchy Valley, Artist Point, Inspiration Point, Mariposa Grove of Big Trees, Wawona (free side trip to Glacier Point and Overhanging Rock beginning June 15), tour of Yosemite Valley, El Portal and return to Merced, via Yosemite Valley Railroad between Merced and El Portal, and Yosemite Transportation System's 240 miles of motoring within the park.

Daily operation of "Bret Harte" line of motor cars between Stockton and Yosemite Valley.

July 15 to September 15:

Daily service between El Portal and Yosemite Valley.

Daily tour of Yosemite Valley.

Daily operation of "Y T S" motor tour of Yosemite National Park, from Merced via El Portal, including Canyon of the Merced River, El Portal, Yosemite Valley, Rainbow View, Tuolumne Grove of Big Trees, Hetch Hetchy Valley, Artist Point, Inspiration Point, Mariposa Grove of Big Trees, Wawona (free side trip to Glacier Point and Overhanging Rock), tour of Yosemite Valley, El Portal and return to Merced, via Yosemite Valley Railroad between Merced and El Portal and Yosemite Transportation System's 240 miles of motoring within the park.

Daily operation of "Tioga Pass Route," motor line between Yosemite Valley and Lake Tahoe, via Tuolumne Grove of Big Trees, Tenaya Lake, Tuolumne Meadows, Tioga Pass, Leevining Canyon, Mono Lake, Bridgeport, and Minden, connecting with rail service between Merced and El Portal and between Tahoe and Truckee.

Daily operation of "Bret Harte" line of motor cars between Stockton and Yosemite Valley.

September 16 to October 1:

Daily service between El Portal and Yosemite Valley.

Daily tour of Yosemite Valley.

Daily operation of "Y T S" motor tour of Yosemite National Park from Merced via El Portal, including Canyon of the Merced River, El Portal, Yosemite Valley, Rainbow View, Tuolumne Grove of Big Trees, Hetch Hetchy Valley, Artist Point, Inspiration Point, Mariposa Grove of Big

September 16 to October 1—Continued.

Trees, Wawona (free side trip to Glacier Point and Overhanging Rock), tour of Yosemite Valley, El Portal and return to Merced, via Yosemite Valley Railroad between Merced and El Portal, and Yosemite Transportation System's 240 miles of motoring within the park.

October 2 to December 1:

Daily service between El Portal and Yosemite Valley.

Daily tour of Yosemite Valley.

Daily service from Yosemite Valley to Mariposa Grove of Big Trees and return, via Artist Point, Inspiration Point and Wawona.

December 2 to December 31:

Daily service between El Portal and Yosemite Valley.

Daily tour of Yosemite Valley.

AUTHORIZED FARES.

Side trip fares to the park.

	One way.	Round trip.
Merced to El Portal, via Yosemite Valley Railroad, effective all year.....	\$7.50	\$10.00
Merced to Yosemite Valley, via Yosemite Valley Railroad, El Portal and Yosemite Transportation System, effective all year.....	9.75	13.50
Merced to Mariposa Grove of Big Trees via following routing: Merced to El Portal, via Yosemite Valley Railroad; El Portal to Yosemite Valley via Yosemite Transportation System; Yosemite Valley to Big Trees and return, via Yosemite Transportation System; Yosemite Valley to El Portal via Yosemite Transportation System; El Portal to Merced, via Yosemite Valley Railroad, effective May 1 to December 1.....	-----	25.00
(Free side trip to Glacier Point and Overhanging Rock included from June 15 to November 1.)		
"Y T S" motor tour of Yosemite National Park, including 156 miles of railroad transportation via Yosemite Valley Railroad and 240 miles of motoring in the park via Yosemite Transportation System, via following routing: Merced to El Portal, via Yosemite Valley Railroad; El Portal to Yosemite Valley, via Yosemite Transportation System; Yosemite Valley to Hetch Hetchy Valley and return, via Yosemite Transportation System; Yosemite Valley to Mariposa Grove of Big Trees and return, via Yosemite Transportation System; tour of Yosemite Valley, via Yosemite Transportation System; Yosemite Valley to El Portal, via Yosemite Transportation System; El Portal to Merced, via Yosemite Valley Railroad, effective June 1 to October 1.....	-----	35.00
(Free side trip to Glacier Point and Overhanging Rock included after June 15.)		
"Tioga Pass Route:" El Portal to Tahoe Tavern, or reverse, via Yosemite Transportation System, effective July 15 to September 15.....	-----	35.00

	One way.	Round trip.
"Tioga Pass Route"—Continued.		
Yosemite Valley to Tahoe Tavern, Lake Tahoe, or reverse via Yosemite Transportation System, effective July 15 to September 15-----	\$33. 00	
Connecting transportation between Tahoe Tavern, Lake Tahoe, and Truckee, via Lake Tahoe Railway & Transportation Co., \$1.50; between El Portal and Merced, via Yosemite Valley Railroad, \$7.50.		
"Bret Harte" line:		
Stockton to Yosemite Valley and return, via Yosemite Transit between Stockton and Carl Inn and Yosemite Transportation System from Carl Inn to Yosemite Valley, effective June 1 to September 15-----	14. 00	\$20. 50
Side trip Carl Inn to Hetch Hetchy Valley and return to Carl Inn-----		4. 25
"Y T S" motor tour of Yosemite National Park, including 240 miles of motoring in the park, via Yosemite Transportation System via following routing:		
El Portal to Yosemite Valley, via Yosemite Transportation System; Yosemite Valley to Hetch Hetchy Valley and return, via Yosemite Transportation System; Yosemite Valley to Mariposa Grove of Big Trees and return, via Yosemite Transportation System; tour of Yosemite Valley, via Yosemite Transportation System; Yosemite Valley to El Portal, via Yosemite Transportation System-----		25. 00
(Free side trip to Glacier Point and Overhanging Rock after June 15.) Effective June 1 to October 1.		
El Portal to Mariposa Grove of Big Trees, via following routing:		
El Portal to Yosemite Valley, via Yosemite Transportation System; Yosemite Valley to Big Trees and return, via Yosemite Transportation System; Yosemite Valley to El Portal, via Yosemite Transportation System-----		15. 00
(Free side trip to Glacier Point and Overhanging Rock from June 15 to November 1.) Effective May 1 to December 1.		
El Portal to Yosemite Valley, via Yosemite Transportation System, effective all year-----	2. 25	3. 50
Yosemite Valley to El Portal, via Yosemite Transportation System, effective all year-----	2. 25	3. 50
Yosemite Valley to Hetch Hetchy Valley, via Yosemite Transportation System, effective June 1 to October 1-----	6. 75	10. 00
Yosemite Valley to Mariposa Grove of Big Trees, via Yosemite Transportation System, with free side trip to Glacier Point and Overhanging Rock from June 15 to November 1, effective May 1 to December 1-----		12. 50
Yosemite Valley to Mariposa Grove of Big Trees, via Yosemite Transportation System, or in reverse direction, effective May 1 to December 1-----	7. 50	
Yosemite Valley to Wawona and return, via Yosemite Transportation System, effective May 1 to December 1-----		9. 50
Tour of Yosemite Valley, via Yosemite Transportation System, effective all year-----		2. 50
Yosemite Valley to Glacier Point direct, via Yosemite Transportation System, minimum four passengers, effective June 15 to November 1-----		7. 50
Yosemite Valley to Carl Inn and return, via Yosemite Transportation System, effective June 1 to September 15-----	5. 00	7. 00

	One way.	Round trip.
Yosemite Valley to Tuolumne Meadows Lodge, via Yosemite Transportation System, minimum five passengers, two day trip, effective July 15 to September 15.....		\$15.00
Motor car service on hourly schedule between hotels, lodges, and camps in Yosemite Valley, per zone, effective June 1 to September 1	\$0.10	

Children's fares.

Children 12 years and over, full fare; children between 5 and 12 years, one-half fare; and children under 5 years, free, unless occupying seat.

SCHEDULES.

"Y T S" MOTOR TOUR OF YOSEMITE NATIONAL PARK.

(Daily, June 1 to October 1.)

Schedules subject to change on approval of the superintendent of the park.

The "Y T S" motor tour of Yosemite National Park includes travel from and to Merced, Calif., stop-over point on main lines of Southern Pacific and Santa Fe Railroads between Los Angeles and San Francisco, for side trip to Yosemite National Park. Cost of tour from Merced to and through the park, returning to Merced—156 miles of railroad transportation via Yosemite Valley Railroad and 240 miles of motoring in the mountains via Yosemite Transportation System—is \$35. Meals and lodgings for period of tour range in cost from \$11.25 to \$25.50, according to class of accommodations taken. Stop-overs in the park are permitted and tour may be prolonged within operating season.

FIRST DAY.

Leave Merced, via Yosemite Valley Railroad.....	8.00 a. m. or 1.40 p. m.
Arrive El Portal	11.55 a. m. or 5.55 p. m.
Leave El Portal, via Yosemite Transportation System.....	12.01 p. m. or 6.00 p. m.
Arrive Yosemite Valley	1.15 p. m. or 7.15 p. m.

Viewing Canyon of the Merced River, El Portal, Chinquapin Falls, Avalanche Falls, Arch Rock, Grouse Creek Falls, Elephant Rock, The Nun, Pulpit Rock, Cascade Falls.

Tour of Yosemite Valley leaves hotels, lodges, and camps of Yosemite Valley, daily at 2.30 p. m., viewing Yosemite Falls, Lost Arrow, Yosemite Point, Indian Canyon, Royal Arches, North Dome, Washington Column, Tenaya Creek, Mount Watkins, Half Dome, Happy Isles, Sentinel Rock, Three Brothers, Cathedral Spires, Cathedral Rocks, Three Graces, Bridalveil Falls, Leaning Tower, and El Capitan.

SECOND DAY.

Leave Yosemite Valley, via Yosemite Transportation System.....	7.10 a. m.
Arrive Hetch Hetchy Valley	12.01 p. m.
Leave Hetch Hetchy Valley	1.15 p. m.
Arrive Yosemite Valley	5.45 p. m.

Viewing Rainbow View, Cascade Creek, Tamarack Creek, Little Brown Jug, Balanced Rock, Gin Flat, Tuolumne Grove of Big Trees, Ackerson Meadows, Mather, Poopenaut Valley, Tuolumne River, Tuolumne Forks, Hetch Hetchy Valley, Wapama Falls, Tueeulala Falls, and Kolana Rock.

THIRD DAY.

Leave Yosemite Valley, via Yosemite Transportation System	7.00 a. m.
Arrive Wawona	9.45 a. m.
Arrive Mariposa Grove of Big Trees	11.00 a. m.
Leave Mariposa Grove of Big Trees	12.00 m.
Leave Wawona	12.50 p. m.
Arrive Glacier Point	3.45 p. m.

(Free side trip to Glacier Point and Overhanging Rock beginning June 15.)

Leave Glacier Point	4.45 p. m.
Arrive Yosemite Valley	7.30 p. m.

Viewing Artist Point, Inspiration Point, Signal Peak, Wawona, Mariposa Grove of Big Trees, including Fallen Monarch Tree, Grizzly Giant Tree, Telescope Tree, Wawona Tunnel Tree, Wawona Point, Three Graces, Diamond Group, American Legion Tree, Chinquapin, Melody Meadows, Bridalveil Meadows, Mono Meadows, Ostrander Rock, and Glacier Point, the commanding viewpoint of the High Sierra.

FOURTH DAY.

Leave Yosemite Valley (via Yosemite Transportation System)	7.00 a. m. or 10.45 a. m.
Arrive El Portal	8.15 a. m. or 12.01 p. m.
Leave El Portal (via Yosemite Valley Railroad)	8.30 a. m. or 12.45 p. m.
Arrive Merced	12.15 p. m. or 4.35 p. m.

"TIAGA PASS ROUTE" BETWEEN YOSEMITE VALLEY AND LAKE TAHOE.

(Daily, July 15 to September 15.)

From July 15 to September 15 the Yosemite Transportation System will operate motor cars daily between Yosemite Valley, Yosemite National Park, and Tahoe, Calif. (Tahoe Tavern on Lake Tahoe), via Tuolumne Grove of Big Trees, Tenaya Lake, Tuolumne Meadows, Tioga Pass, Leevining Canyon, Mono Lake, Bridgeport, Minden, Nevada, and Tallac.

First car will leave Yosemite Valley July 15 and Tahoe Tavern July 17. Last car will leave Yosemite Valley September 15 and Tahoe Tavern September 17. Cars will call for and deliver passengers at following resorts on the shore of Lake Tahoe: Lakeside Park, Bijou, Al Tahoe, The Grove, Tallac, Pomins, Tahoma, Moana Villa, McKinneys, Homewood, Tahoe Tavern, and junction of road to Emerald Bay Camp.

FIRST DAY.

Yosemite Valley to Lake Tahoe.		Lake Tahoe to Yosemite Valley.	
Lv. Yosemite Valley	7.35 a. m.	Lv. Tahoe Tavern	8.15 a. m.
Ar. Yosemite Creek	12.45 p. m.	Lv. Tallac	11.00 a. m.
Lv. Yosemite Creek	1.30 p. m.	Ar. Minden	12.15 p. m.
Ar. Tuolumne Meadows	3.35 p. m.	Lv. Minden	1.00 p. m.
Lv. Tuolumne Meadows	3.45 p. m.	Lv. Bridgeport	5.45 p. m.
Ar. Mono Lake	6.15 p. m.	Ar. Mono Lake	7.05 p. m.

SECOND DAY.

Lv. Mono Lake-----	7.00 a. m.	Lv. Mono Lake-----	7.30 a. m.
Lv. Bridgeport-----	8.40 a. m.	Ar. Tuolumne Meadows---	10.10 a. m.
Ar. Minden-----	1.15 p. m.	Lv. Tuolumne Meadows---	10.20 a. m.
Lv. Minden-----	2.00 p. m.	Ar. Yosemite Creek-----	12.05 p. m.
Lv. Tallac-----	3.30 p. m.	Lv. Yosemite Creek-----	1.00 p. m.
Ar. Tahoe Tavern-----	6.00 p. m.	Ar. Yosemite Valley-----	5.45 p. m.

Tioga Pass Route cars of the Yosemite Transportation System connect at Tahoe Tavern with Lake Tahoe Railway and Transportation Co., operating to Truckee, Calif., on main line of Southern Pacific Railroad and in Yosemite Valley with cars for El Portal, Calif., terminus of the Yosemite Valley Railroad operating from Merced, Calif., on main lines of Southern Pacific and Santa Fe Railroads.

One-way fares: Between Truckee and Tahoe Tavern, \$1.50; between Tahoe Tavern and Yosemite Valley or El Portal, \$35; between El Portal and Merced, \$7.50.

Meals and lodgings en route between Yosemite Valley and Lake Tahoe will cost \$7.00 per passenger.

Passengers holding tickets reading via Southern Pacific Railroad between Ogden, Utah, and San Francisco, Calif., may use same from Ogden to Truckee and from Merced to San Francisco, or the reverse, paying \$44.00 for detour transportation between Truckee and Merced via Lake Tahoe, The Tioga Pass Route, Yosemite Valley, and El Portal.

Seats for Tioga Pass Route cars should be reserved in advance.

For baggage and reservation arrangements see "General information" on pages 65 and 66.

BETWEEN MERCED AND YOSEMITE VALLEY, VIA YOSEMITE VALLEY RAILROAD, EL PORTAL, AND YOSEMITE TRANSPORTATION SYSTEM.

Read down.		Via Y. V. R. R.	Read up.	
All year round.	May 1 to Aug. 31.		May 1 to Aug. 31.	All year round.
8.00 a. m.	1.40 p. m.	Lv.....Merced—So. Pac. Sta.....Ar.	12.15 p. m.	4.35 p. m.
11.55 a. m.	1.50 p. m.	Lv.....Merced—Santa Fe Sta.....Ar.	8.30 a. m.	4.25 p. m.
	5.55 p. m.	Ar.....El Portal.....Lv.		12.45 p. m.
		Via Y. T. S.		
12.01 p. m.	6.00 p. m.	Lv.....El Portal.....Ar.	8.15 a. m.	12.01 p. m.
1.15 p. m.	7.15 p. m.	Ar.....Yosemite Valley.....Lv.	7.00 a. m.	10.45 a. m.

BETWEEN YOSEMITE VALLEY AND HETCH HETCHY VALLEY, VIA YOSEMITE TRANSPORTATION SYSTEM.

(Daily, June 1 to October 1.)

Lv. Yosemite Valley -----	7.30 a. m.	Lv. Hetch Hetchy Valley ---	1.15 p. m.
Ar. Mather -----	11.00 a. m.	Ar. Mather -----	2.00 p. m.
Lv. Mather -----	11.15 a. m.	Lv. Mather -----	2.15 p. m.
Ar. Hetch Hetchy Valley ---	12.01 p. m.	Ar. Yosemite Valley -----	5.45 p. m.

BETWEEN YOSEMITE VALLEY, MARIPOSA GROVE OF BIG TREES AND GLACIER POINT, VIA YOSEMITE TRANSPORTATION SYSTEM.

	May 1 to June 14.	June 15 to Sept. 1.	Sept. 2 to Dec. 1.
Lv. Yosemite Valley -----	8.00 a. m.	7.00 a. m.	8.00 a. m.
Ar. Wawona -----	10.45 a. m.	9.45 a. m.	10.45 a. m.
Ar. Mariposa Big Trees -----	11.55 a. m.	11.00 a. m.	11.55 a. m.
Lv. Mariposa Big Trees -----	1.30 p. m.	12.00 m.	1.00 p. m.
Lv. Wawona -----	2.30 p. m.	12.50 p. m.	2.15 p. m.
Ar. Glacier Point -----		3.45 p. m.	4.45 p. m.
Lv. Glacier Point -----		4.45 p. m.	7.30 a. m.
Ar. Yosemite Valley -----	5.30 p. m.	7.30 p. m.	10.00 a. m.

TOUR OF YOSEMITE VALLEY, VIA YOSEMITE TRANSPORTATION SYSTEM.

Tour of Yosemite Valley via Yosemite Transportation System is operated the year round, leaving hotels, lodges, and camps in Yosemite Valley at 2.30 p. m. returning at 4.30 p. m. The tour embraces all of the principal points of interest in Yosemite Valley.

GENERAL INFORMATION.

Reservations.—Passengers are required to make seat reservations prior to 9 p. m. of day before departure for all motor-car trips and tours, except that passengers en route to Yosemite Valley via El Portal need not make reservations from El Portal to Yosemite Valley.

After arrival at Yosemite Valley, passengers may make reservations for the Hetch Hetchy Valley, Mariposa Grove of Big Trees, Glacier Point trips, and tour of Yosemite Valley.

Tioga Pass Route reservations between Yosemite Valley and Lake Tahoe, in either direction, should be made in advance as soon as passenger has determined definite travel date. Reservations from Yosemite Valley to Lake Tahoe should be made by addressing Yosemite Park & Curry Co., Yosemite National Park, Calif. Reservations from Lake Tahoe to Yosemite Valley should be made by addressing Yosemite Park & Curry Co., Yosemite National Park, Calif., prior to July 15, and by addressing Yosemite Park & Curry Co., Tahoe Tavern, Calif., after July 15.

Dates of sale and limits.—Side-trip tickets reading from Merced to points in the park and return are on sale daily. Side-trip tickets sold to Yosemite Valley during winter season are limited to 30 days from date of sale. Side-trip tickets sold during summer season to Yosemite Valley, to Mariposa Grove of Big Trees, via route of Y. T. S. motor tour and via Tioga Pass Route, are limited to 90 days from date of sale, not to exceed October 31.

Yosemite Transportation System portions of through tickets and tickets sold locally within the park are limited to operating seasons of motor-car lines over which they read.

Stop-overs.—Stop-overs on Yosemite Transportation System will be permitted at Yosemite Valley, Big Trees, Wawona, Glacier Point, Hetch Hetchy Lodge, and Tuolumne Meadows within final limit of tickets and operating seasons of motor-car lines.

Merced, Calif., on main lines of Southern Pacific and Santa Fe railroads between Los Angeles and San Francisco, is stop-over point for side-trip to Yosemite National Park and stop-overs, without charge, are permitted on both one-way and round-trip main-lines' tickets.

Tioga Pass route passengers holding tickets reading via Southern Pacific Railroad between Ogden, Utah, and San Francisco, Calif., may use same from Ogden to Truckee and from Merced to San Francisco, or the reverse, paying \$44.00 for detour between Truckee and Merced via Lake Tahoe, Tioga Pass route, Yosemite Valley, and El Portal.

Baggage.—Hand baggage not exceeding 40 pounds per passenger will be carried free on all motor-car trips.

Checked baggage should be checked through via El Portal to Yosemite Valley, for which charge will be \$1.50 per trunk and 50 cents per piece of hand baggage, collection to be made by checking agent for Yosemite Transportation System.

Tioga Pass route passengers may check baggage via railroads and Yosemite Transportation System between Truckee or Tahoe Tavern and Yosemite Valley or Merced in either direction.

No charge will be made for storage of baggage at Merced while passengers are making side trip to Yosemite National Park.

Between Housekeeping Camp headquarters and public and private camps in Yosemite Valley baggage may be checked at 50 cents per trunk or 25 cents per piece of hand baggage.

Freight.—Freight will be transported by the Yosemite Transportation System between El Portal and Yosemite at one-half cent per pound, minimum charge for 100 pounds.

Express.—Express will be carried by the Yosemite Transportation System between El Portal and Yosemite at 1 cent per pound, minimum charge for 35 pounds.

Special motor service—Authorized rates.—Six passenger motor cars will be operated by the Yosemite Transportation System in any regular line as special private cars for exclusive use of passengers desiring such service, when cars are available, on the following basis:

El Portal to Yosemite Valley, minimum four adult fares, plus \$17.

Yosemite Valley to El Portal, minimum four adult fares, plus \$17.

Yosemite Valley to Mather (Hetch Hetchy Lodge) and return, minimum four adult fares, plus \$30.

Yosemite Valley to Big Trees-Glacier Point and return, minimum four adult fares, plus \$30.

Yosemite Valley to Lake Tahoe via Tioga Pass route, minimum four adult fares, plus \$200.

Lake Tahoe to Yosemite Valley via Tioga Pass route, minimum four adult fares, plus \$200.

In addition to the above charges regular tickets will be required for passengers carried in excess of the stated minimum number of four.

Chartered motor service—Authorized rates.—Six-passenger touring cars may be chartered for service not covered by regular motor-

car-line schedules at \$75 per day, \$40 per half day, or \$6 per hour, the latter rate applying only for service on floor of Yosemite Valley.

Agencies.—The Yosemite Transportation System of the Yosemite Park & Curry Co. maintains agencies at 511 South Spring Street, Los Angeles, 689 Market Street, San Francisco, and at hotels, lodges, and camps in Yosemite National Park, where tickets, reservations, printed matter, and information may be obtained. Communications sent to the park should be addressed "Yosemite Transportation System of the Yosemite Park & Curry Co., Yosemite National Park, Calif." The Yosemite Transportation System also maintains an agency at Tahoe Tavern, Tahoe, Calif., from July 15 to September 17.

YOSEMITE PARK & CURRY CO.

REPAIR GARAGE AND STORAGE SERVICE.

The Yosemite Park & Curry Co. maintains and operates a repair and storage garage centrally located in Yosemite Valley. Skilled mechanics and modern machinery facilitate prompt service in repairs. No storage fee is charged while repairs are being made. Free parking spaces for cars are provided at all hotels, lodges, and camps.

Authorized rates.

Use of garage service car, per mile traveled in round trip.....	\$0. 50
Plus fee for mechanic's time, per hour of time out.....	2. 00
Towing service, per mile traveled in round trip.....	0. 75
Plus fee for driver's time, per hour of time out.....	1. 50
Or, plus fee for mechanic's time, per hour of time out.....	2. 00
Emergency passenger service—touring car sent from garage to carry passengers of cars broken down, 1 to 6 passengers and ordinary hand-baggage—car and driver, per hour traveled in round trip.....	8. 00
Storage at garage, per car per night.....	0. 50

The company is not responsible for articles left in cars while in garage. Articles may be checked at garage office. The company is not responsible for losses by fire or theft.

Mechanic's work at garage—Authorized rates.

Helpers, per hour, minimum, one-fourth hour.....	\$1. 50
Mechanics, per hour, minimum one-fourth hour.....	2. 00
Machine and blacksmith work, per hour, minimum one-fourth hour.....	2. 25

The above scale of labor is effective between 8 a. m. and 5 p. m., Sundays and holidays excepted. All labor outside of these hours and for Sundays and holidays is designated as overtime and charged for at rate of time and one-half.

Washing cars—Authorized rates.

All roadsters or 5-passenger cars.....	\$3. 00
All 7-passenger cars.....	3. 50
Coupés.....	4. 00
All other types of inclosed cars.....	5. 00
Wire wheels, per car, extra.....	. 50

TUOLUMNE MEADOWS GARAGE SERVICE.

The Yosemite Park & Curry Co. maintains, in season, a service car and a mechanic at Tuolumne Meadows, where the following prices prevail:

Use of garage service car, per mile traveled in round trip.....	\$0.75
Plus fee for mechanic's time, per hour of time out.....	2.25

SADDLE-HORSE SERVICE.**RIDING ON FLOOR OF YOSEMITE VALLEY.**

(The Yosemite Transportation System has saddle animals for rent the year round.)

Authorized rates.

Horse, full day.....	\$5.00
Horse, half day.....	3.00
Horse, per week.....	30.00
Burro, full day.....	2.00
Burro, half day.....	1.50
Guide or escort, full day.....	7.00
Guide or escort, half day.....	4.00
Riding lessons, per person, per hour.....	1.00
Pony, ride around track.....	.10
Pony, per hour.....	1.00
Pony, per half day.....	3.00

Full day consists of eight hours. Half day consists of four hours, terminating at 12 m. or 6 p. m. Horses mounted at and to be returned to stables.

GLACIER POINT SADDLE-ANIMAL TRAIN.

The Yosemite Transportation System operates daily, from May 15 to September 1, a saddle-animal train from Yosemite Valley to Glacier Point on south rim, going via Vernal and Nevada Falls Trail and returning via Panorama Trail, 16 miles in a day, with free guide service, at a rate of \$5 per person.

SADDLE-ANIMAL TRAIL TRIPS, WITH FREE GUIDE SERVICE.

The Yosemite Transportation System will provide free guide service on the following saddle-animal trips for the minimum number of persons named. One-day trips unless otherwise specified:

Trip.	Round trip mileage.	Round trip rate.	Minimum number persons.
From Yosemite Valley to—			
Glacier Point, going via Vernal and Nevada Falls Trail, returning via Panorama Trail.....	16	\$5.00	5
Eagle Peak or top of Yosemite Falls.....	13	5.00	5
Glacier Point, going via Panorama Trail, returning via Pohono Trail to Fort Monroe, with motor-car transportation thence via Inspiration Point to Yosemite Valley, a one-day trip.....	24	9.00	5
Top of Nevada Falls, via Vernal Falls.....	12	5.00	5
Vernal Falls (Lady Franklin Rock), half-day trip.....	8	3.00	5
Half Dome.....	16	5.00	5
Clouds Rest.....	24	7.00	5
Merced Lake.....	32	10.00	5

SADDLE-HORSE GUIDE SERVICE.

For less than minimum number of persons specified for trail trips and for special parties and trips guide and horse will be furnished at \$7 per day or \$4 per half day; cook with horse per day \$7 to \$10; packer with horse per day \$7.50; pack animal per day \$5.

Horses from Yosemite Valley are not allowed on trails without guide.

STABLE AND BLACKSMITHING SERVICE.*Authorized rates.*

Feeding horse, hay only, per feed.....	\$0.50
Feeding horse, grain only, per feed.....	.50
Shoeing, per shoe, smooth shod.....	.75
Shoeing, per set, smooth shod.....	3.00

TUOLUMNE MEADOWS SADDLE SERVICE.

The Yosemite Transportation System will rent saddle horses at Tuolumne Meadows Lodge at \$3 per day of eight hours, or \$2 per half day of four hours, terminating at 12 noon or 5.30 p. m.

Saddle horses may also be rented at Tuolumne Meadows Lodge for the following trail trips, and used without guide service:

From Tuolumne Meadows Lodge to—	Round trip mileage.	Round trip rate.	Minimum number persons.
Lyell Fork Base Camp.....	16	\$3.00	1
Mount Dana.....	16	3.00	1
Mount Conness via Young Lake.....	16	3.00	1
Water Wheels via Glen Aulin.....	22	4.50	1
Fletcher Lake.....	16	3.00	1
Ireland Lake.....	12	3.00	1
Columbia Finger via Sunrise Trail.....	16	3.00	1
Tenaya Lake.....	20	4.00	1

SPECIAL TRAIL TRIPS BY SADDLE ANIMAL.

Rates for saddle animals to be used from Yosemite Valley in trail trips other than those specified will be constructed on basis of \$5 for 16 miles or less, plus 25 cents for each additional mile or fraction thereof.

Rates for saddle animals to be used from Tuolumne Meadows Lodge in trail trips other than those specified will be constructed on basis of \$3 for 16 miles or less, plus 25 cents per mile for each additional mile or fraction thereof.

SLEIGH PASSENGER FARES.

Sentinel Hotel:

Happy Isles and return.....	\$1.00
El Capitan Bridge and return.....	1.50
Mirror Lake and return.....	1.50

Chartered sleighs:

8 passengers with 2 horses and driver—	
Half day, 4 hours-----	\$15.00
Full day, 8 hours-----	20.00
18 passengers with 4 horses and driver—	
Half day, 4 hours-----	16.00
Full day, 8 hours-----	25.00

INDEPENDENT CAMPING TOURS.**FROM YOSEMITE VALLEY.**

For those wishing to visit many of the beauty spots of the High Sierra camping out may be enjoyed under most ideal conditions. The Yosemite Transportation System maintains an outfitting station in Yosemite Valley for independent camping tours into the high mountains.

The Yosemite Valley and its immediate surroundings are but a very small portion of the park. Far afield in the higher mountains are splendid forests, beautiful lakes, and streams where excellent camping places and trout fishing may be found. Many rugged peaks of the High Sierra command magnificent views and invite the mountain climber, while trails lead in all directions to points of interest and beauty.

The matter of proper clothing and personal effects is an important one, as the lack of necessities tends to discomfort, while the common mistake of bringing too many or unnecessary articles proves a serious annoyance and often robs an outing of much of its pleasure. The following list is suggested as being suitable for a month's trip:

2 suits medium-weight underwear.	1 pair flannelette pajamas.
2 woolen and 1 cotton shirt (or waists).	1 pair stout walking shoes with puttees or leggings (or boots, if preferred).
6 pair socks or stockings (medium to heavy).	1 pair comfortable light shoes for camp.
1 old business suit or outing suit, or skirt of khaki, corduroy, or whipcord.	1 soft felt or cloth hat with fairly wide brim.
1 extra pair trousers, riding breeches.	1 pair gloves or gauntlets.
1 sweater.	2 bandannas and 3 khaki handkerchiefs.

Very lightweight raincoat for possible storm and bathing suit are sometimes desirable.

Sundry articles which will be found useful are toilet articles (essential ones only), tinted glasses, adhesive tape, small electric flash lamp, map, compass, matches, knife, fishing tackle and fishing license, and camera and plenty of films.

The prospective camper may be fully equipped after arrival in Yosemite Valley. Tents, bedding, cooking utensils, outing clothes, fishing tackle; in fact, everything essential to camping may be pur-

chased or rented from the camping tours department of the Yosemite Transportation System in Yosemite Valley at reasonable rates regulated by the National Park Service. Provisions may be obtained at the Yosemite store.

Saddle and pack animals may be secured and the necessary guide service obtained for camping tours from the Yosemite Transportation System at Yosemite Valley at the following rates:

Authorized rates for saddle and pack animal and guide service for high mountain camping tours—minimum 7 days.

Saddle and pack animals, per day-----	\$3.00
Guide, with horse, per day-----	7.00
Packer, with horse, per day-----	7.50
Cook, with horse, per day-----	7.00-10.00

When campers secure the service of guides, packers, or cooks they are required to furnish meals to such employees as accompany them. If guides do not accompany animals, parties hiring same will be accountable for loss or damage to stock or equipment.

Campers should pack their clothing and personal effects in dunnage bags rather than in suit cases or grips, which are likely to be damaged while a trail trip is in progress. Dunnage bags may be rented in the park at a nominal rate. A deposit on rented equipment is required and is refunded upon its return.

RENTAL EQUIPMENT FOR HIGH MOUNTAIN CAMPING TOURS.

The Yosemite Transportation System, at Yosemite Valley, will rent following camping equipment at rates named for high mountain camping tour parties using saddle and pack animals. Groceries may be purchased at Yosemite store, at Yosemite Valley. All rentals charged for at a minimum price of one week, additional days charged for at proportionate price per day.

SLEEPING AND GENERAL OUTFIT.		SLEEPING AND GENERAL OUTFIT—contd.	
	Rental per week.		Rental per week.
Sleeping bags:		Brown canvas:	
Extra-heavy type-----	\$7.00	6 by 6-----	\$0.50
Regular type-----	5.00	3 by 6-----	.25
Extra wool blankets-----	2.50	Washbasins-----	.10
Bath towels-----	.20	Ax-----	.75
Face towels-----	.10	Hammer-----	.50
Dunnage bags:		Shovel, short-handled-----	.50
Large-----	.75		
Small-----	.40	COOKING OUTFIT.	
Fly:		Stove irons, sets-----	.75
14 by 14-----	2.00	Sack for same, with strings.	
12½ by 21½-----	3.00	Galvanized bucket:	
Curtain screen, 6 by 24-----	1.00	12-inch-----	.20
		10-inch-----	.20

COOKING OUTFIT—continued.		COOKING OUTFIT—continued.	
	Rental per week.		Rental per week.
Cover for 10-inch hot-water bucket	\$. 05	Broiler	\$. 10
Dutch oven:		Plates, 9½-inch 10
Featherweight 50	Cups 10
Iron	1. 00	Soup bowls, 5¼-inch 10
Reflecting oven	1. 25	Sugar bowl 30
Butcher knife 10	Canteen, 1-quart 30
Bread knife 10	Mason jar, 1-quart 05
Pancake turner 05	Dippers, nesting tin cups 05
Coffeepot, granite, 5-quart 35	Fry pans, 12-inch tops, Acme, No. 6 25
Teapot, granite, 4-quart 30	Can openers, with corkscrew 03
Kettles, granite, nesting:		Tin pie pans, 10-inch 03
8-quart, with covers 35	Tin milk pans, 6-quart 15
6-quart, with covers 30	Coffee strainer 05
5-quart, with covers 25	Salt shaker 10
3-quart, with covers 20	Egg whip 05
Knives 06	Paring knife 05
Forks 03	Knife sharpener 05
Spoons:		Pot chain and scraper 05
Tea 02	Milk can, tin, 1-quart 10
Table 03	Milk kettle, granite, 3-quart 25
Basting, 16-inch 05	Cream pitcher 30
Toast fork and cover lifter 10		

ALL-EXPENSE CAMPING TOURS.

All-expense camping tours are operated by the Yosemite Transportation System from Yosemite Valley for parties who desire to have all the many details of preparation and management of a camping trip arranged for them. Complete outfits will be made up for trips of a week or more, including the guides, packers, cooks, saddle animals, pack animals, provisions, canvas shelter, cooking utensils, bedding, etc., necessary for a comfortable camping trip.

The Yosemite Transportation System will gladly assist parties in arranging their itineraries should such assistance be desired. Address Yosemite Transportation System, Yosemite National Park, Calif.

WALKING TOURS.

Most of the hotels, lodges, and camps in the Yosemite National Park are within a day's walking distance of one another for those accustomed to that means of traveling.

For seasoned hikers economical trips may be made afoot to many interesting places accessible from any of the hotels, lodges, or camps, and a delightful vacation may be had at small expense. However, as carrying heavy equipment on a walking trip is likely to rob it of most of its pleasures, pack animals are desirable for carrying at least a part of the outfit.

Hikers' camps.

Name.	Location.	Season.	Capacity.	Elevation (feet).
Little Yosemite Hikers' Camp.....	Little Yosemite Valley....	June 1-Sept. 1...	20	6,200
Merced Lake Hikers' Camp.....	Merced Lake.....	do.....	50	7,100
Booth Lake Hikers' Camp.....	Booth Lake.....	July 10-Sept. 1..	20	10,000
Lyell Fork Hikers' Camp.....	Lyell Fork, Tuolumne River.	do.....	20	9,000
Tuolumne Meadows Hikers' Camp.	Tuolumne Meadows.....	do.....	20	8,600
Glen Aulin Hikers' Camp.....	Glen Aulin.....	do.....	20	7,800
Tenaya Lake Hikers' Camp.....	Tenaya Lake.....	do.....	20	8,141

Authorized rates.

Lodging.....	\$0.75
Meals or box lunches, each.....	.75

Accommodations at the various hikers' camps consist of sleeping accommodations in dormitory tents in which cots and ample blankets are provided, but no sheets or pillows. Meals are served camp style in dining tent and include simple, wholesome food.

CAMPING IN YOSEMITE VALLEY.**HOUSEKEEPING CAMP OUTFITS.**

Yosemite Valley is an ideal location for outdoor living. Camp sites, with running water and toilet facilities, are provided free of charge by the National Park Service. Sites are assigned by the superintendent of the park. The Yosemite store and meat market, a post office, telegraph, and express office are located in Yosemite Village. Fresh milk, vegetables, bread, and bakery supplies are to be had.

RESERVATIONS.

Complete equipment for camping may be rented from the Yosemite Housekeeping Camp Headquarters of the Yosemite Park & Curry Co., located in Yosemite Valley, on Center Road. (See map on p. 40.) It is advisable in every instance that those desiring to rent camp equipment should reserve it before arrival; apply to Yosemite Park & Curry Co., at Yosemite National Park, Calif., 511 South Spring Street, Los Angeles, Calif., or 689 Market Street, San Francisco, Calif. State whether coming by train or automobile. A reservation will be held until 8 p. m. of the day of arrival. If campers have made reservations and equipment is set up, they will be shown their camp up to 8 p. m.

If no reservation has been made and campers arrive at the Yosemite Housekeeping Camp Headquarters not later than 4 p. m., they will be taken care of for the night, providing equipment is available. If they arrive after 4 p. m., it will be necessary for them to take

transient lodging for the night, making arrangements for house-keeping outfit to be set up the following day if equipment is available.

Autoists may notify the Yosemite Housekeeping Camp Headquarters of delays in reaching the headquarters by telephoning, if within the park, from the rangers' checking stations.

In assigning housekeeping camp sites effort will be made to select the best available site, but if camper desires a different location, a moving charge of \$2.50 will be made.

Baggage, express, parcel post, and freight must be tagged or labeled with owner's name and permanent address and plainly marked "Care Yosemite Housekeeping Camp Headquarters, Yosemite National Park, Calif."

Baggage checked by railroad must be checked through to Yosemite Housekeeping Camp Headquarters and not to El Portal. A charge of \$1.50 per trunk and 50 cents per piece of hand baggage will be made by checking agent. Checked baggage will be delivered to Yosemite Housekeeping Camp Headquarters, if so checked. For moving baggage between headquarters and camp sites a charge of 50 cents per trunk and 25 cents per piece of hand baggage will be made.

Authorized rates for rental of regular outfits.

(Payable in advance. Prices are for week or fraction thereof.)

First week's rental:		Each week thereafter:	
1 person.....	\$5. 50	1 person.....	\$4. 00
2 persons.....	8. 00	2 persons.....	6. 00
3 persons.....	10. 00	3 persons.....	7. 00
4 persons.....	12. 00	4 persons.....	8. 00
5 persons.....	14. 00	5 persons.....	9. 00
6 persons.....	16. 00	6 persons.....	10. 00

Articles furnished with regular outfits.

Ax or hatchet.	Candlesticks.	Frying pans.	Salt shakers.
Bake pan.	Chairs.	Knives.	Table.
Basin.	Coffeepot.	Lamp or lantern.	Tablespoons.
Blankets (pair of).	Pillow.	Mattress.	Cot.
Bucket.	Cups.	Teaspoons.	Teapot.
Butcher knife.	Dairy pan.	Plates.	Teakettle.
Camp stove.	Dish pan.	Saucers.	Tent (1).
Can opener.	Forks.	Sauce pans.	Vegetable dish.

One person will be furnished a 7 by 7 tent; parties of 2 and 3 persons a 10 by 12 tent; parties of 4, 5, and 6 persons a 12 by 14 tent.

Floors, sheets, pillow slips, and towels not furnished with the regular outfit, but can be rented separately.

TABLE 1.—Rates on articles rented separately by the week and month.

Article.	Week.	Month.	Article.	Week.	Month.
Ax.....	\$0.25	\$0.75	Pitchers.....	\$0.10	\$0.25
Bake pan.....	.05	.15	Pie tins.....	.05	.15
Basin.....	.10	.30	Pillow slips, each.....	.25	.75
Boilers, wash.....	.25	.75	Pillows.....	.20	.60
Bowls, wash.....	.05	.15	Plates, dinner.....	.05	.15
Blankets.....	.75	2.25	Pancake turners.....	.05	.15
Brooms.....	.20	.60	Pepper shakers.....	.05	.15
Buckets.....	.15	.45	Rakes ¹10
Coolers.....	.50	1.50	Sheets, each.....	.75	2.25
Cots, mattress, and pillow:			Shovels ¹10
Single.....	1.25	3.75	Salt shakers.....	.05	.15
Double.....	2.25	6.75	Spoons.....	.05	.15
Chairs:			Stew kettle.....	.15	.45
Camp.....	.25	.75	Stoves, camp, and two joints of		
Steamer.....	.35	1.00	pipe.....	1.50	4.50
Candlesticks.....	.05	.15	Stovepipe, per joint.....	.10	.30
Cups.....	.05	.15	Stop jars.....	.25	.75
Coffeepot.....	.10	.30	Saucers.....	.05	.15
Can openers.....	.05	.15	Tents: ²		
Dish pans.....	.15	.45	7 by 7.....	1.50	4.50
Dairy pans.....	.05	.15	10 by 12.....	2.50	7.50
Filling of oil for lamps, etc.....	.10	12 by 14.....	3.50	10.00
Flatirons.....	.15	.45	14 by 14.....	4.00	12.00
Forks.....	.05	.15	Tent floors:		
Frying pans.....	.10	.30	7 by 7.....	2.50	7.50
Hammocks.....	.50	1.50	10 by 12.....	3.00	9.00
Kettles, tea.....	.20	.60	12 by 14.....	3.50	10.00
Knives:			Tent flies:		
Table.....	.05	.15	10 by 12.....	1.25	3.75
Butcher.....	.10	.30	12 by 14.....	1.50	4.50
Lamps.....	.35	1.00	14 by 14.....	1.75	5.00
Lanterns.....	.25	.75	Tables.....	.50	1.50
Mattress:			Teapots.....	.10	.30
Single.....	.75	2.25	Tubs, wash ¹10
Double.....	1.50	4.50	Washboards ¹05
Mirrors.....	.25	.75			

¹ Per day.

² These rates apply to tents already erected.

Fuel and wood at current prices. Truck and driver. \$5 per hour.

YOSEMITE STORE.

The Yosemite store in Yosemite Village, open the year round, carries a full line of general merchandise, with grocery, clothing, bakery, laundry, hardware, toilet articles, drug sundries, novelties, curios, candy, news stand, cigars and tobacco, art pictures, boots and shoes, shoe repairing, soda fountain, lunch counter, express office, fresh vegetables, and dairy products departments.

Fishing rods, reels, and lines are for sale or rent.

RENTAL OF WEARING APPAREL.

The following articles of wearing apparel are rented by the Yosemite Park & Curry Co. at Yosemite Lodge in summer season and at Sentinel Hotel in winter season :

	Per day or less.
Knickerbockers (wool, women's).....	\$1.50
Shirts (wool, men's or women's).....	1.00
Mackinaws.....	1.00
Sweaters.....	1.00
Shoes—heavy (men's or women's).....	1.00

	Per day or less.
Riding breeches (khaki or O. D., men's or women's)-----	\$0. 75
Raincoats (poncho)-----	. 75
Overshoes-----	. 50
Golf stockings, oversocks, or heavy socks-----	. 50
Gloves or mitts (woolen)-----	. 25
Caps-----	. 25
Toques-----	. 25
Canvas puttees-----	. 25
Umbrellas-----	. 25
Knapsacks-----	. 25

RENTAL OF WINTER SPORTS EQUIPMENT.

The Yosemite Park & Curry Co. rents the following winter sports equipment at Sentinel Hotel during the winter season :

	Per day.
Snowshoes, skis, flexible flyer sleds (each), skates (per pair)-----	\$0. 50

YOSEMITE HOSPITAL AND MEDICAL SERVICE.

Authorized rates to public.

Visits :

Office, medical-----	\$3. 00-\$4. 00
Office, surgical, including dressing-----	3. 00- 5. 00
House, camp, or hotel, floor of Yosemite Valley, day-----	5. 00
House, camp, or hotel, floor of Yosemite Valley, night-----	7. 50
Glacier Point, day-----	10. 00
Glacier Point, night-----	15. 00
Elsewhere than on floor of Yosemite Valley and Glacier Point, per mile-----	. 50

NOTE.—Day service between 6 a. m. and 6 p. m. Night service
between 6 p. m. and 6 a. m.

Hospital service: Except in cases of extreme emergency, where necessity for immediate treatment does not permit of such arrangement, a deposit or satisfactory evidence of financial responsibility is required at time of admission to hospital and all bills are payable weekly in advance.

Hospital service rates:

Private rooms, with subsistence and general nursing, 1 patient in room, per day-----	7. 00
Private rooms, with subsistence and general nursing, 2 patients in room, per patient per day (more than 1 patient will be assigned to a private room only with consent of both patients)-----	6. 00
Ward, with subsistence and general nursing, per patient per day--	4. 50
Medical service per day-----	5. 00-10. 00
Medicine, drugs, bandages, etc., extra.	

NOTE.—Special nurses or other special or extraordinary service
subject to prior arrangement and agreement between patient
and resident physician.

Operating-room service:

Major operations-----	15. 00-30. 00
Minor operations-----	5. 00-10. 00

NOTE.—Above includes all necessary attendance, anesthetics,
drugs, etc.

Ambulance service:

Between points on floor of Yosemite Valley, \$6 per hour, with minimum charge of	\$3.00
Between Yosemite Valley and outside of Yosemite Valley, per mile, one way	1.00

Miscellaneous extra charges:

Obstetrical cases, delivery charge	50.00
X-ray examinations	5.00-10.00
Transfusion	20.00

NOTE.—Arrangements for blood must be made between the patient and the donor.

Operating-room dressings (except obstetrical cases)	2.00
Operating-room dressings (obstetrical cases)	15.00
Plaster casts, including operating-room service	2.50-20.00
Mechanical services and appliances at market values.	

Laboratory service:

Microscopic examinations	1.00-3.00
Tubercle bacillus, microscopic examination	2.00
Examination for ameba and parasites	3.00
Blood count—	
Complete	2.50
White count and smear	1.50
Differential and parasites	1.50
White count	1.00
Differential	1.00
Hemoglobin50
Urinalysis (routine)	1.00
Routine stool	2.00
Routine spinal fluid	2.00
Gastric analysis	2.00

Clinical chemistry:

Urine—	
Urea nitrogen	2.50
Sugar, quantitative	2.00
Quantitative albumen	1.00

Laboratory tests necessitating outside laboratory investigation charged for at current rates.

All hospital cases entitled to admission, urine and blood examinations without charge.

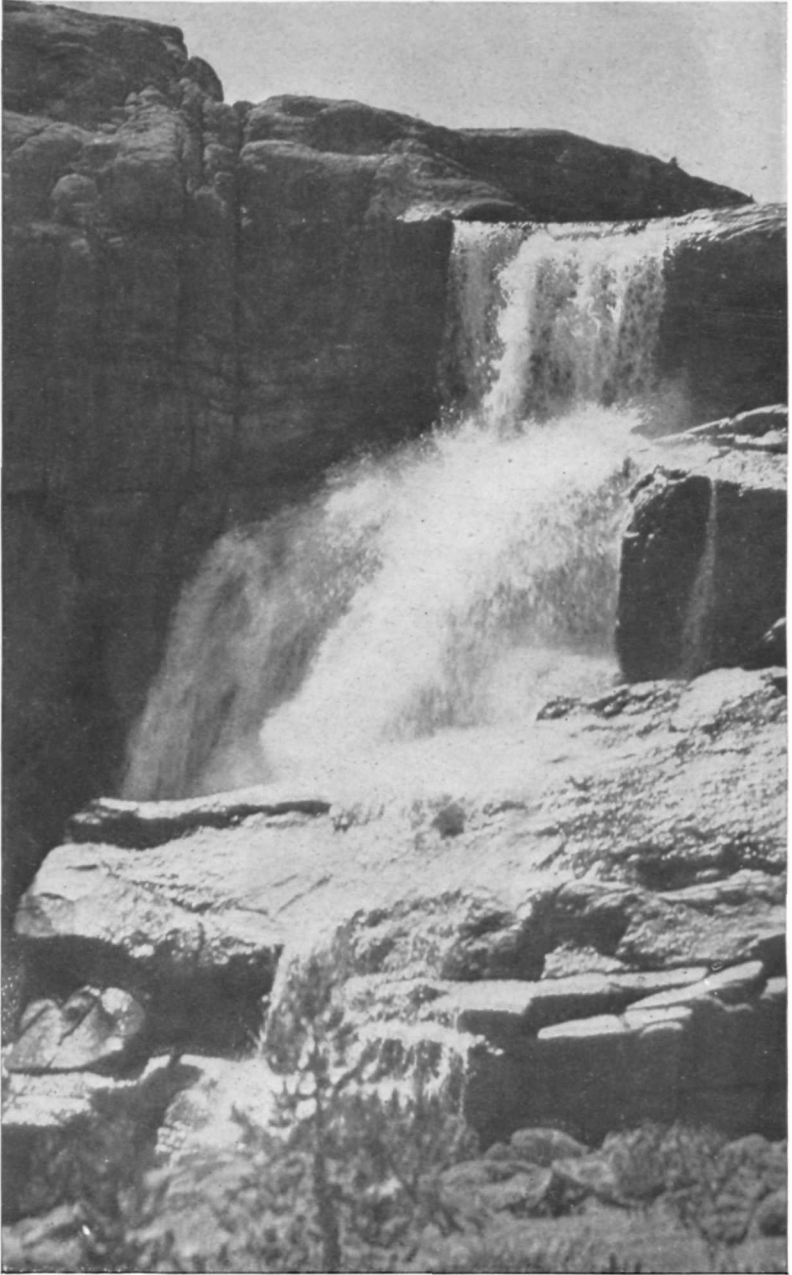
THE NATIONAL PARKS AT A GLANCE.

[Number, 19; total area, 11,372 square miles.]

National parks in order of creation.	Location.	Area in square miles.	Distinctive characteristics.
Hot Springs..... 1832	Middle Arkansas.....	1½	46 hot springs possessing curative properties—Many hotels and boarding houses—20 bath-houses under public control.
Yellowstone..... 1872	Northwestern Wyo- ming.	3,348	More geysers than in all rest of world together—Boiling springs—Mud volcanoes—Petrified forests—Grand Canyon of the Yellowstone, remarkable for gorgeous coloring—Large lakes—Many large streams and waterfalls—Vast wilderness, greatest wild bird and animal preserve in world—Exceptional trout fishing.
Sequoia..... 1890	Middle eastern Cali- fornia.	252	The Big Tree National Park—Several hundred sequoia trees over 10 feet in diameter, some 25 to 36 feet in diameter—Towering mountain ranges—Startling precipices—Mile-long cave of delicate beauty.
Yosemite..... 1890	Middle eastern Cali- fornia.	1,125	Valley of world-famed beauty—Lofty cliffs—Romantic vistas—Many waterfalls of extraordinary height—3 groves of big trees—High Sierra—Waterwheel falls—Good trout fishing.
General Grant..... 1890	Middle eastern Cali- fornia.	4	Created to preserve the celebrated General Grant Tree, 35 feet in diameter—6 miles from Sequoia National Park.
Mount Rainier..... 1899	West central Wash- ington.	324	Largest accessible single peak glacier system—23 glaciers, some of large size—48 square miles of glacier, 50 to 500 feet thick—Wonderful sub-alpine wild flower fields.
Crater Lake..... 1902	Southwestern Oregon.	240	Lake of extraordinary blue in crater of extinct volcano—Sides 1,000 feet high—Interesting lava formations—Fine fishing.
Wind Cave..... 1903	South Dakota.....	17	Cavern having many miles of galleries and numerous chambers containing peculiar formations.
Platt..... 1904	Southern Oklahoma...	1½	Many sulphur and other springs possessing medicinal value.
Sullys Hill..... 1904	North Dakota.....	1½	Small park with woods, streams, and a lake—Is an important wild-animal preserve.
Mesa Verde..... 1906	Southwestern Colo- rado.	77	Most notable and best preserved prehistoric cliff dwellings in United States, if not in the world.
Glacier..... 1910	Northwestern Mon- tana.	1,534	Rugged mountain region of unsurpassed Alpine character—250 glacier fed lakes of romantic beauty—60 small glaciers—Precipices thousands of feet deep—Almost sensational scenery of marked individuality—Fine trout fishing.
Rocky Mountain... 1915	North middle Colo- rado.	397	Heart of the Rockies—Snowy range, peaks 11,000 to 14,255 feet altitude—Remarkable records of glacial period.
Hawaii..... 1916	Hawaii.....	186	Three separate areas—Kilauea and Mauna Loa on Hawaii, Haleakala on Maui.
Lassen Volcanic... 1916	Northern California...	124	Only active volcano in United States proper—Lassen Peak, 10,465 feet—Cinder Cone, 6,879 feet—Hot springs—Mud geysers.
Mount McKinley... 1917	South central Alaska..	2,645	Highest mountain in North America—Rises higher above surrounding country than any other mountain in the world.
Grand Canyon..... 1919	North central Arizona.	958	The greatest example of erosion and the most sublime spectacle in the world.
Lafayette..... 1919	Maine coast.....	8	The group of granite mountains upon Mount Desert Island.
Zion..... 1919	Southwestern Utah...	120	Magnificent gorge (Zion Canyon), depth from 800 to 2,000 feet, with precipitous walls—Of great beauty and scenic interest.



EL CAPITAN IN WINTER.



WHITE CASCADES, TUOLUMNE CANYON