

MOTORISTS GUIDE YOSEMITE NATIONAL PARK

1935



UNITED STATES
DEPARTMENT OF THE INTERIOR

HAROLD L. ICKES, SECRETARY

NATIONAL PARK SERVICE

ARNO B. CAMMERER, DIRECTOR

vided without charge to the camper.

Campers should go direct to the camp grounds located in the upper part of the Valley and **should register their name, make and number of car, length of stay, etc.,** at the Ranger Station located at the entrance to each camp. If you expect emergency messages or telegrams, leave your name and location at the telephone and telegraph offices in the New Village. Information, guide books, maps, etc., may be obtained free at the following places: Park Headquarters and museum in the New Village; Ranger Stations in each camp; Information Desks at Camp Curry, Yosemite Lodge, and the Ahwahnee. Rangers are here to help you—when in doubt ask a ranger.

All camp grounds, whether specially improved or not, shall be kept in a clean and sanitary condition.

Camping may be restricted to certain areas or entirely prohibited, when in the judgment of the Superintendent conditions are not suitable due to snow or adverse weather.

The following park regulations must be implicitly observed:

In order to preserve the natural scenery of the park and to provide pure water and facilities for keeping the park clean, permanent camp sites have been set apart for tourists visiting the park in their own conveyances, and no camping is permitted outside the specially designated sites. These camps have been used during past seasons; they will be used daily this year and for many years to come. It is necessary, therefore, that the following rules be strictly enforced for the protection of the health and comfort of the tourists who visit the park in their own conveyances. Combustible rubbish shall be burned on camp fires and all other garbage and refuse of all kinds shall be placed in garbage cans, or, if cans are not available, placed in the pits provided at the edge of the camp. At new or unfrequented camps, garbage shall be burned or buried. Keep the camp grounds clean.

No camp shall be placed within 25 feet of any well defined water course, water hydrant, main road, or nearest tent.

Be quiet in the camps from 10 p. m. to 6 a. m. Many people come here for a rest.

No person, party, group, or organization shall camp more than 30 days in Yosemite Valley in any one year. (If approved by Director).

Do not drive nails in trees or attach wires thereto.

Campers and others shall not wash clothing or cooking utensils, nor pollute in any other manner the waters of the park, nor bathe in any of the streams near the regularly traveled thoroughfares in the park without suitable bathing clothes. Bathing suits shall not be worn in automobiles or around the camps, villages, or hotels without proper covering.

Stock shall not be tied so as to permit their entering any of the streams of the park. All animals shall be kept a sufficient distance from camping grounds in order not to litter the ground and make unfit for use the area which may be used later as tent sites. Pasturage of stock on the floor of the Yosemite Valley is prohibited.

Wood for fuel only may be taken from dead or fallen trees, except sequoias. Cut firewood may be purchased at the housekeeping camp office.

There are numerous camp sites in the park; information as to their location will be furnished by any Park Ranger. A special written

permit must be secured from the Ranger Office for all camp fires or picnic fires in Yosemite Valley built outside of the regular camp grounds.

Tents, cots, mattresses, tables, and all kinds of camping supplies may be rented at the Housekeeping Camp.

WARNING ABOUT BEARS

Do not feed the bears from the hand. They are wild animals and may bite, strike or scratch you. They will not harm you if they are not fed at a close range. Bears will enter or break into automobiles if food is left inside. They will also rob your camp of food supplies if not protected, especially in the early spring or late fall when food is scarce. It is best to put food supplies in a box, suspended on a rope between two trees, well out of their reach. Bears are especially hungry in the fall of the year and serious loss or damage may result if food is left accessible to them.

ALTITUDE OF SUMMITS IN YOSEMITE VALLEY

Name	Altitude above sea level	Altitude above pier near Sentinel Hotel
	<i>Feet</i>	<i>Feet</i>
Basket Dome	7,602	3,642
Cathedral Rocks	6,551	2,591
Cathedral Spires	6,114	2,154
Clouds Rest	9,980	5,964
Columbia Point	5,080	1,071
Eagle Peak	7,773	3,813
El Capitan	7,564	3,604
Glacier Point	7,214	3,254
Half Dome	8,852	4,892
Leaning Tower	5,863	1,903
Liberty Cap	7,072	3,112
North Dome	7,581	3,571
Inspiration Point	5,391	1,481
Panorama Point	6,224	2,264
Pulpit Rock	4,195	765
Sentinel Dome	8,117	4,157
Sentinel Rock	7,000	3,040
Stanford Point	6,659	2,699
Taft Point	7,503	3,543
Washington Column	5,912	1,952
Yosemite Point	6,935	2,975
Tunnel—East Portal	4,408	448

HEIGHT OF WATERFALLS IN YOSEMITE VALLEY

Name	Height of fall	Altitude of crest	
		Above sea level	Above pier near Sentinel Hotel
	<i>Feet</i>	<i>Feet</i>	<i>Feet</i>
Yosemite Fall (Upper)	1,430	6,525	2,565
Lower Yosemite	320	4,420	460
Nevada Fall	594	5,907	1,947
Vernal Fall	317	5,044	1,084
Illilouette Fall	370	5,816	1,856
Bridalveil Fall	620	4,787	827
Ribbon Fall	1,612	7,008	3,048
Widows Tears Fall	1,170	6,466	2,506

MUSEUM

The park museum located in New Village, a gift to the nation from the Laura Spelman Rockefeller Memorial, is a spacious and appropriately designed building in which are housed a large number of exhibits loaned or contributed by park enthusiasts.

These exhibits are appropriately displayed in rooms devoted to the following major fields: GEOLOGY, BIRDS AND ANIMALS, INDIANS, HISTORY, TREES AND FLOWERS.

Indian Village life is displayed in Museum Nature Garden daily during the summer by members of our local Indian Village.

The museum also contains a library well supplied with scientific and historical books and periodicals, all of which are available to visitors.

Resident Naturalists in the museum will be at the service of the public to answer questions and to instruct regarding the Valley and its natural features.

NATURE GUIDE SERVICE

During the SUMMER SEASON a splendid program of lectures and nature guide service is offered to visitors. You should plan to take advantage of the lectures and trips listed below. The more you know about the park and its wild life the more you will enjoy your stay here. This service is maintained by the Government and is FREE to the public.

SUMMER SCHEDULE

Nature walks each morning at 9:00 except Sunday (see posted bulletins for complete schedule).

Auto Caravan daily (except Sunday) at 9:30 a. m. and 2 p. m. to points of special interest on the floor of the Valley; start from museum in your own car.

Each day (except Sunday) there is an all day hike to Glacier Point, Vernal and Nevada Falls, Eagle Peak, Tenaya Canyon or Half Dome, guided by a naturalist.

At the FREE evening programs at Government Camp No. 14, Camp Curry, Yosemite Lodge, and the Ahwahnee Hotel, there are short talks on natural features of the park.

Short talks on the Geology of Yosemite Valley are given each morning and afternoon in the museum.

Every week during July and August, a Naturalist leads a party on a six-day hike into the spectacular, high-mountain region of the Park. Inquire at the museum about this trip.

Visit the wild flower garden back of the Museum.

A junior nature school for children is conducted during the summer. The bears are fed every evening at 9:30 at the bear-pits, and a short talk is given.

Ranger naturalists are also at your service at Glacier Point, Mariposa Grove, and Tuolumne Meadows.

Groups or organizations may procure the services of a naturalist by applying to the Park Naturalist at the Museum.

INFORMATION SERVICE

The National Park Service maintains an information bureau at the Superintendent's office, in Yosemite, and those in charge will supply accurate information concerning points of interest, trails, camping facilities, camping locations, fishing places, etc.

A branch office of the California State Automobile Association is maintained from May 1 to October 1, in conjunction with the Park Service information bureau in the Administration Building, where the best road information obtainable is furnished free to autoists.

Information can also be obtained at any of the hotels, camps, lodges, or garages, and at the transportation office.

Lost and found articles should be turned in to the Lost and Found Departments, located at the Park Headquarters in the New Village, and at Camp Curry and Yosemite Lodge.

INTERESTING FACTS REGARDING THE WAWONA ROAD TUNNEL

Length 4,230 feet; width 28 feet; height 18 feet. Three ventilating tunnels; three fans, 9 feet in diameter, operated automatically, can move 300,000 cubic feet of air per minute. Solid rock removed, 81,113 cubic yards. Powder used, 275 tons; electric exploders, 40,000. Bore tunneled in one year; complete project, 2 years 5 months, without one fatality or serious accident.

THE BIG TREES

There are three groves of big trees (*Sequoia gigantea*) in the Yosemite Park; the Merced and Tuolumne Groves northwest of Yosemite Valley, and the Mariposa Grove on the southern edge of the Park.

The Mariposa Grove contains some of the oldest and largest living things on earth. It may be reached by the Wawona Road, the distance being 35 miles, an hour and a half trip each way, over a paved highway. The Wawona Road leaves the Valley near Bridalveil Fall. Unsurpassed views of the whole expanse of Yosemite Valley may be had from the east portal of the new 4,230-foot tunnel.

All visitors to the Big Trees should drive through the upper grove to the famous Wawona Tunnel Tree and to Wawona Point where a wonderful panoramic view of the Wawona basin and the South Fork canyon may be obtained from an elevation of 7,000 feet. Motorists should visit Glacier Point, a 14 mile side trip, branching off the Wawona Road at Chinquapin, on their way to or from the Mariposa Grove.

Big Trees Lodge and free campgrounds are available for visitors in the Mariposa Grove.

SIZE OF BIG TREES IN MARIPOSA GROVE

Name of the tree	Girth at base	Diameter at base	Height
	<i>Feet</i>	<i>Feet</i>	<i>Feet</i>
Grizzly Giant	96.5	27.6	209
Faithful Couple	95.8	30.6	253
Columbia	88.1	28.0	285
Lafayette	96.1	30.6	269
Washington	93.5	29.7	242
Wawona	86.4	27.5	231
Mark Twain	55.7	17.7	268
Stable	92.0	29.5	246
Virginia	89.3	28.4	186

Clothespin	69.6	22.2	265
California	78.1	22.8	234
Fallen Massachusetts Tree		28.0	280

A log cabin museum is maintained at the Mariposa Grove and naturalist service is provided.

WAWONA

With the addition of the Wawona basin of 14 square miles, Yosemite has gained an extensive area for recreational use, providing campgrounds, picnic areas, and added hotel facilities at the Wawona Hotel.

Wawona is located in a beautiful mountain meadow on the new Wawona Road, 27 miles south of Yosemite Valley and near the Mariposa Grove of Big Trees, less than one hour's drive over a paved, high-gear road through the new tunnel.

Saddle and pack horses are available at popular prices for trips to the fine fishing lakes and streams near Wawona. Bridle paths, a swimming pool, tennis courts, and a mountain golf course provide exceptional recreational facilities. An emergency airplane landing field is located near the hotel.

Stores, meat market, garage, gas station, post office, and similar modern conveniences are available. A coffee shop with popular prices is operated in connection with the hotel. Campers will find a free campground along the South Fork of the Merced, near Wawona.

GOVERNMENT PUBLICATIONS

At park headquarters the National Park Service distributes a Government booklet describing all of the interesting features of the park; its canyons, lakes, mountains, forests, and fishes. This booklet also contains the rules and regulations of the park as well as schedules of the authorized rates of the public utilities. It has a few illustrations.

The following government publications are for sale at the Museum:

Geologic History of Yosemite Valley—Matthes	1.10
Topographic map of Yosemite Valley	.10
Topographic map of Yosemite National Park	.25
National Parks Portfolio	1.00
Conservation in the Department of the Interior by Ray Lyman Wilbur and W. A. Du Puy	1.00
Fauna of National Parks	.20

Other guide books on Yosemite which are on sale at the museum and at hotels, stores, and studios are listed below:

OTHER PUBLICATIONS

"Yosemite Nature Notes" (per year) (Includes membership in the Yosemite Natural History Association)	\$1.00
"American Forests" with "Yosemite Nature Notes" (per year)	3.00
"Nature magazine" with "Yosemite Nature Notes" (per year)	3.00
Club offer, three publications (per year)	6.00
Animal Life in Yosemite—Grinnell & Storer	5.00
A Yosemite Flora—Dr. H. M. Hall	2.00
Big Trees—Fry and White	1.00
Birds of the Pacific States—Ralph Hoffman	5.00
Flowers of Coast & Sierra—Edith S. Clements	3.00
Guide to Yosemite—A. F. Hall	.50
Handbook of Yosemite—A. F. Hall	1.25
Illustrated Flora of the Pacific Coast—V. I. Abrams	9.00
Hundred Years in Yosemite—Russell	3.50

Trees of Yosemite—Tresidder and Hoss.....	\$2.00
"Oh, Ranger!"—Albright and Taylor.....	2.00
Our National Parks—John Muir.....	3.50
Outdoor Heritage—Harold C. Bryant.....	1.75
Songs of Yosemite—Harold Symmes.....	1.50
The Living Past—John C. Merriam.....	2.00
The Story of My Boyhood and Youth—John Muir.....	3.50
Lights and Shadows of Yosemite—Katherine A. Taylor.....	1.25
Place Names of the Sierras—Francis Farquhar.....	2.00
Yosemite Trip Book—Katherine A. Taylor.....	.50
Birds of Yosemite.....	.25
Mi-Wok Indian Culture.....	3.00

FISHING

Information on the best streams and lakes for fishing can be obtained at Park Headquarters or any ranger station. State fishing licenses are required in the park and State laws regarding limits, season, etc., are enforced in Yosemite National Park. Visit the State Fish Hatchery, located near Happy Isles.

Fishing licenses, tackle, flies, etc., are obtainable at the stores.

ADMINISTRATION

Yosemite National Park is in charge of the Superintendent, C. G. Thomson, whose office is at the New Village in Yosemite Valley, the Park Headquarters. Criticisms and suggestions regarding any phase of park activities should be addressed to the Superintendent in writing. The telephone service of the park is available free for emergency reports regarding reckless driving on the roads, forest fires, accidents, etc.

PROTECTION

The park is protected by the ranger force under the direction of the Superintendent. The principal duties of the rangers include the patrolling of the roads and trails, control of automobile traffic, protection of fish, bird, and animal life, sanitation of camps, etc., but they also answer inquiries and give general information regarding the park as opportunity permits. Do not hesitate to consult the rangers. They are here to aid you. Ranger stations are situated at all park entrances, and at frequent intervals along the park roads. Ranger headquarters are located in the Superintendent's office in the New Village. Telephone 98 for any information.

THE FIRE DANGER

Fires constitute one of the greatest perils to the park; they shall not be kindled near trees, deadwood, moss, dry leaves, forest mold, or other vegetable refuse, but in some open space on rocks or earth. Should camp be made in a locality where no such open space exists or is provided, the deadwood, moss, dry leaves, etc., shall be scraped away to the rock or earth over an area considerably larger than that required for the fire.

Fires shall be lighted only when necessary and when no longer needed shall be completely extinguished, and all embers and bed smothered with earth or water, so that there remains no possibility of reignition.

Smoking or the building of fires on any lands within the park may be prohibited by the Superintendent, when in his judgment, the

hazard makes such action necessary.

Especial care must be taken that no lighted match, cigar, or cigarette is dropped in any grass, twigs, leaves, or tree mold. It is unlawful to throw burning tobacco or matches from moving vehicles.

YOU CAN NOT BE TOO CAREFUL WITH FIRE.

In case of fire, accidents or emergencies, call Ranger Office, telephone number 98.

The use of fireworks or firecrackers in the park is prohibited except with the written permission of the Superintendent.

DOGS AND CATS

Dogs and cats are prohibited on the Government lands in the park, except that upon permission secured upon entrance, they may be transported through the park provided they are kept under leash, crated, or otherwise under restrictive control of the owner at all times while in the park. Dogs and cats can not be kept over night in the park.

FIREARMS

Visitors traveling through the park to places beyond shall, at entrance, report and surrender all firearms, traps, nets, seines, or explosives in their possession to the first park officer. Persons traveling in motor cars through the Park must have their firearms sealed at the first entrance station and must not break the seal until they leave the park boundaries. During the hunting season arrangements may be made at entrance stations to identify and transport by automobile, the carcasses of birds or animals killed outside the park.

CHURCH SERVICES

Both Protestant and Catholic church services are held each Sabbath during the summer season. Resident representatives of both faiths conduct the services, and speakers of State or National prominence are often in the pulpits. Weekly bulletins are posted advising of the hours and locations of services.

The Yosemite National Park Church is a corporation composed of Protestants and Roman Catholics, the purpose of which is to maintain religious services within the Park.

AUTOMOBILE AND MOTORCYCLE REGULATIONS

The provisions of the California Vehicle Act are adopted for the government of motor vehicles in Yosemite National Park, in so far as they are applicable and not inconsistent with special regulations.

AUTOMOBILES.—The park is open to automobiles operated for pleasure, but not to those carrying passengers who are paying, either directly or indirectly, for the use of machines (except, however, automobiles used by transportation lines operating under Government franchise), and any person operating an automobile in contravention of the provisions of this regulation may be deemed guilty of its violation.

Careful driving is demanded of all persons using the roads.

The Government is in no way responsible for any kind of accident.

MOTOR TRUCKS.—Motor trucks and busses are admitted to the

park under the same conditions as automobiles, except the Superintendent will establish limits of size and tonnage capacity which may vary according to the different roads and bridges.

TRAILERS.—Commercial truck trailers engaged in hauling freight will be required to secure permission from the Superintendent before using the park roads.

SPEEDS.—Motor vehicles shall be so operated as to be under the safe control of the driver at all times. The current laws of the California Vehicle Act regarding speeds are in force in Yosemite National Park.

In no instance shall the speed exceed 35 miles per hour, except for emergency calls.

INTOXICATION.—No person who is under the influence of intoxicating liquor, and no person who is addicted to the use of narcotic drugs, shall operate or drive a motor vehicle of any kind on the park roads.

ROADS AND HOURS.—The Yosemite All Year Highway to Merced, and the roads on the floor of the Yosemite Valley, are open throughout the year.

The Wawona Road is open all the year with the exception of short periods during the winter when it may be closed during unusually heavy snowstorms.

The Tioga Road is open from July 1 to October 15; Big Oak Flat Road from May 20 to October 31. These opening and closing dates are approximate only, as they are dependent upon snow conditions in the high mountain country. Travel over any park road may be restricted or entirely prohibited when in the judgment of the Superintendent road conditions are unsuitable for travel.

Automobiles may enter or leave the park at Arch Rock via the All Year Highway between the hours of 5:00 a. m. and 12:00 m.

The South Entrance on Wawona Road is open from 5:00 a. m. to midnight, June 1 to September 1; from 6:00 a. m. to 9:30 p. m. rest of year.

On the Tioga Road and Mather Road, automobiles may enter or leave the park boundaries only between the hours of 6:00 a. m. and 9:30 p. m.

Hours of entrance or departure on all roads may be changed temporarily for holidays and special events, on orders of the Superintendent.

BIG OAK FLAT ROAD.—Controls are maintained only on the Big Oak Flat Road between El Capitan checking station on the floor of Yosemite Valley, and Gentry checking station on the north rim of Yosemite Valley, a distance of 4 miles. The controls are as follows:

Outbound (even hours)	Inbound (odd hours)
6:00 a. m. to 6:25 a. m.	7:00 a. m. to 7:25 a. m.
8:00 a. m. to 8:25 a. m.	9:00 a. m. to 9:25 a. m.
10 00 a. m. to 10:25 a. m.	11:00 a. m. to 11:25 a. m.
12:00 m. to 12:25 p. m.	1:00 p. m. to 1:25 p. m.
2:00 p. m. to 2:25 p. m.	3:00 p. m. to 3:25 p. m.
4:00 p. m. to 4:25 p. m.	5:00 p. m. to 5:25 p. m.
6:00 p. m. to 6:25 p. m.	7:00 p. m. to 7:25 p. m.
8:00 p. m. to 8:25 p. m.	9:00 p. m. to 9:25 p. m.

All automobiles shall travel between these two stations within the hour, but not in faster time than 25 minutes, speed in no case to exceed 15 miles per hour.

AUTOMOBILE PERMITS.—No motor vehicle may be operated in

the park without a Yosemite National Park Permit.

The owner or driver of each motor vehicle entering the park shall secure this permit at the entrance station. They may also be secured at the Chief Ranger's office.

This permit authorizes the operation of vehicles over the public roads of the park throughout the current calendar year. This permit is issued to the vehicle described thereon, not to the owner or driver. Permits purchased in December of any year are honored throughout the ensuing calendar year. The permit should be carried in the car and exhibited to park rangers on request.

FEES.—Fees for automobile and motorcycle permits are \$2 and \$1 respectively, and are payable in cash only.

RIGHT-OF-WAY, etc.—Any vehicle traveling slowly upon any of the park roads, when overtaken by a faster-moving motor vehicle, and upon suitable signal from such overtaking vehicle, shall move to the right to allow safe passage.

ACCIDENTS; STOPOVERS.—If cars stop because of accident or for any reason, they shall be immediately parked in such a way as not to interfere with travel on the road. If on a one-way road, the automobile must wait where parked for the next hour schedule going in its direction of travel. If for any reason the automobile is stopped on the floor of Yosemite Valley, it shall be parked off on the right-hand edge of the road. The driver of any motor-driven vehicle who meets with an accident shall report same in writing at the nearest ranger station or to the Superintendent of the park.

When automobiles, going in opposite directions meet on a grade, the ascending machine has right of way, and the descending machine shall be backed or otherwise handled as may be necessary to enable the ascending machine to pass with safety.

Automobile drivers should use only the paved or oiled roads and not drive across the open meadows on the Valley floor.

See park information booklet for complete automobile and general regulations.

Persons who render themselves obnoxious by disorderly conduct or bad behavior shall be subjected to the punishment hereinafter prescribed for violation of the foregoing regulations, or they may be summarily removed from the park by the Superintendent.

FINES AND PENALTIES.—Any person who violates any of the foregoing regulations shall be deemed guilty of a misdemeanor and shall be subject to a fine of not more than \$500 or imprisonment not exceeding six months or both, and be adjudged to pay all costs of the proceedings, or may be punished by revocation of the automobile permit and by immediate ejection from the park. Such violation shall be cause for refusal to issue a new automobile permit to the offender without prior sanction in writing from the Director of the National Park Service or the Superintendent of the park.

RIGHTS OF WAY ON ROADS

All motorists are accorded equal rights and privileges on the park roads. It should be remembered, however, that automobile stages are required to travel on schedule and that they should not be delayed. You should recognize an appropriate signal from drivers of stages, as from all others, and yield the right of way, in order that they may continue on their regular schedule.

PUBLIC UTILITIES AND CONVENIENCES

MEDICAL AND DENTAL SERVICE

Yosemite Valley has among other conveniences a hospital building where medical, surgical, and dental services are provided. A competent surgeon and physician with attendant is in charge of the hospital and will promptly attend patients at any place within the park.

STAGE SERVICE

The Yosemite Transportation System, operating a general automobile stage service over all of the roads in the park and operating through service between Fresno, Merced, and the Mariposa Grove of Big Trees, Wawona, Glacier Point, Lake Tahoe, and Yosemite, conducts its business under franchise from the Federal Government. It is a public utility under strict control of the Government, the National Park Service authorities prescribing the character of service that the company must furnish the public and fixing all rates charged for the services rendered.

Inquire at transportation offices at Camp Curry, Yosemite Lodge, or the Ahwahnee for rates and schedules.

GARAGE SERVICE

During the winter all storage and repair service is provided at the Y. T. S. garage. In summer storage and repair service is available at the Camp Curry garage. Automobiles of guests will be called for and delivered from the storage garage.

Tires, tubes and a limited stock of standard automobile parts and accessories are carried.

In summer, gasoline and oil stations are located at Yosemite Lodge, Camp Curry, stage garage; at Chinquapin and Wawona on the Wawona Road, and Carl Inn, Aspen Valley, White Wolf, and Tuolumne Meadows on the Tioga Road. In winter gas and oil may be obtained at stations near the Lodge and Stage garage.

TELEPHONE AND TELEGRAPH

Campers and others expecting emergency telegrams or calls should register and leave location of their camps at Park Headquarters and telegraph office in New Village.

Local and long distance telephone and telegraph service is maintained by the National Park Service and the Western Union at the Administration Building in Yosemite New Village. Telephone communication may be had at all interior hotels, camps, and lodges, and long distance and telegraph messages may be sent from interior points and delivered by telephone to such points.

A messenger service is in operation between the telegraph office in Yosemite Village and established hotels, lodges, and camps on the floor of Yosemite Valley.

EXPRESS SERVICE

Express service is available in the General Store, in the Old Village.

POSTAL SERVICE

Post offices are maintained in Yosemite New Village, and during the summer months at Camp Curry, Wawona, and Tuolumne Meadows.

LAUNDRY SERVICE

Laundry, cleaning, and pressing service facilities are available at Camp Curry, Yosemite Lodge, The Ahwahnee, Village Store, and the Housekeeping Camp Office where laundry will be picked up and delivered.

STORES AND NEWS STANDS

A general store and meat market is operated in the Old Village by the Yosemite Park and Curry Company. In this general store a complete line of groceries, meats, clothing, and campers' supplies of all kinds is available. This company also operates a store at Wawona and in Tuolumne Meadows during the summer season where food supplies of a kind suitable for the high mountain camper are kept.

At Camp Curry there is a grocery and provision store where a full line of groceries, meats, and food supplies is carried during the summer season.

Mrs. Jo'in Degnan operates a grocery store and bakery in the Old Village and in connection therewith an ice cream parlor and lunch-room.

Soda fountains, offering ice cream, beverages, and sandwiches, are maintained at Yosemite Lodge, Camp Curry, New Village, The Ahwahnee, Old Village store, and Wawona.

In all of the hotels, lodges, and camps there are news stands at which curios, post cards, photographs, souvenirs, newspapers, magazines, tobacco, smokers' supplies, etc., are available.

PHOTOGRAPHS OF THE PARK

There are four concerns doing a photographic business in Yosemite National Park, namely the Yosemite Park and Curry Company, H. C. Best, J. T. Boysen, and D. J. Foley. In addition, the Yosemite Park and Curry Company operates studios at Camp Curry, Yosemite Lodge, The Ahwahnee, Glacier Point, Wawona, and the Big Trees Lodge. Photographic supplies may be obtained at all of the hotels, lodges, and camps and studios.

AUTHORIZED RATES FOR PUBLIC UTILITIES

All rates and services rendered by park operators are supervised by the National Park Service. Any discrepancies in service or apparent errors in charges should be settled with the local unit managers if possible. If agreement cannot be reached, the matter should be taken up with the office of the Superintendent.

HOTELS, LODGES, AND CAMPS

OPERATED BY THE YOSEMITE PARK AND CURRY COMPANY

	Opening date*	Closing date*
The Ahwahnee Hotel	All year	
Camp Curry	May 19-Sept. 5	
Yosemite Lodge, Summer	May 28-Aug. 1	
Yosemite Lodge, Winter	Sept. 5-May 19	
Glacier Point Hotel, Summer	June 10-Sept. 1	
Glacier Point Hotel, Winter	Sept. 1-June 9	
Wawona Hotel	May 29-Sept. 1	
Big Trees Lodge	May 29-Aug. 31	
Tuolumne Meadows Lodge	July 1-Sept. 5	
Glen Aulin High Sierra Camp	July 12-Aug. 20	
Merced Lake High Sierra Camp	June 15-Aug. 20	
Vogelsang High Sierra Camp	July 15-Aug. 20	
Tuolumne Meadows High Sierra Camp	July 6-Aug. 20	

Housekeeping camps in tents May 7-Sept. 5
Housekeeping camps in wooden cabins All year
*Approximate, dependent of weather and trail conditions.

RESERVATIONS.—For reservations at above hotels, camps, and lodges, apply to Yosemite Park and Curry Company, at 540 W. Sixth St., Los Angeles, Calif., or 39 Geary St., San Francisco, Calif., or Southern Pacific Depot, Merced, Calif., or Yosemite National Park, California.

CHILDREN'S RATES.—Children registered with adults for one day or more, under three years of age, no charge; three to ten years of age, one-half rate; eleven years of age and over, full rate. No reduced rates for children at the High Sierra or Housekeeping camps.

THE AHWAHNEE HOTEL—American plan—Open all year in Yosemite Valley.

Rooms with bath per person \$10.00 per day and up. Rates depend upon size and location of rooms

Transient meal rates:

Breakfast	\$1.00
Luncheon	1.50
Dinner	2.00
Room service	.50

CAMP CURRY.—In Yosemite Valley. American and European plan. Open approximately May to September. Camp Curry is a complete community center. Accommodations are in bungalows with bath, cabins without bath, and completely furnished tents. The dining room seats 700 guests; the cafeteria 350. European plan, in tents only, \$1.50 to \$2.50 per person daily; American plan, \$4 to \$8.50 per person daily—less 10 percent discount for 3 days stay.

YOSEMITE LODGE.—In Yosemite Valley. European plan. Open all year. A colony of redwood cabins with and without bath set among pines and cedars near the Merced River. The main building has an excellent cafeteria. Rates, \$2.25 to \$5 per person daily—less 10 percent discount for 3 days stay.

YOSEMITE LODGE—Housekeeping cabins—Open all year

	Daily, 1 or 2 days	Daily, 3 or more days	Per week
One person in cabin	\$3.00	\$2.25	\$14.00
Each additional person	1.00	.75	4.00

Note: Additional charge for wood is 50 cents per bundle. Cabins are furnished with wood stoves, complete housekeeping equipment including bedding, linen, cooking utensils, and silverware. Electrically lighted cabins. Partially furnished housekeeping cabins \$1.50 a night for one or two persons. Bedding and utensils extra, if desired.

YOSEMITE HOUSEKEEPING CAMP—Open May 7 until September 5

Regular outfits, comprising tents fully furnished except for linen (sheets, pillow slips, and towels) are available at the following rates, by the week only:

	One person	Two persons	Each additional person
Tent with floor:			
First week	\$8.50	\$11.50	\$2.00
Each succeeding week	6.00	8.50	1.50
Tent with floor and fly:			
First week		12.50	2.00
Each succeeding week		9.00	1.50

Partly furnished outfits (tents with cots, mattresses, table, chairs, and stove) are available at the following rates:

Tent with floor: Per day
For 1 or 2 persons \$1.50
For each additional person25
Extra equipment per person:
Blankets25
Linen and pillows25
Cooking and table equipment25
A charge of 50 cents per bundle is made for wood.
All kinds of camping equipment is available for rental to all campers; ask for rental price list.

CAMP CURRY—Housekeeping section. By the week only

	One person in tent	Two persons in tent	Additional persons in same tent
First week	\$10.50	\$17.00	Each \$3.50
Each successive week	8.50	15.00	3.00

Tents are furnished with wood stoves, electric lights, and complete housekeeping equipment including bedding, linen, cooking utensils, and silverware. Wood 50 cents per bundle.

GLACIER POINT HOTEL.—On the Valley rim. European plan. Open approximately June to September. The main building has accommodations for 150 guests in rooms with or without bath and meals are served in the cafeteria. (During winter months when Glacier Point is accessible only by trail, the Annex is available as a headquarters for skiing parties.) Rates, \$2 to \$5 per person daily—less discount for 3 days stay.

WAWONA HOTEL.—Twenty-seven miles from Yosemite Valley, near the Mariposa Grove of Big Trees. American and European plans. Open approximately May to October. A charming vacation place with the finest mountain golf course in the West; headquarters for fishing and camping trips. Rates, \$1.25 to \$4.50 per person daily, European plan; \$4.25 to \$9 American plan—less discount for 3 days stay.

BIG TREES LODGE.—In the Mariposa Grove of Big Trees, 35 miles from Yosemite Valley. European plan. Open approximately June to September. A new building of unusual charm and comfort with accommodations for 24 guests. Four bedrooms have private bath; all have hot and cold running water. The cafeteria has an outdoor terrace. Rates, \$2.50 to \$5 per person daily—less discount for 3 days stay.

TUOLUMNE MEADOWS LODGE.—On Tioga Pass Road in the heart of Yosemite Park, 68 miles from Yosemite Valley. American plan. Open approximately July to September. A trail and fishing center and headquarters for pack trip parties. Accommodations are in canvas cabins with lounge and dining room in central canvas building. Rates, \$5 and \$6 per person daily—less discounts.

CHAIN OF HIGH SIERRA CAMPS

These camps make accessible to saddle and hiking parties the scenic High Sierra country of the park not penetrated by roads. Camps are within walking distance of each other about 8 to 12 miles apart over good trails.

Prices are the same at all camps—one dollar for each lodging and one dollar for each meal or box lunch.

Camps are as follows:

Name	Season
Merced Lake	June 15-Aug. 20
Vogelsang High Sierra camp	July 15-Aug. 20
Tuolumne Meadows	July 6-Aug. 20
Glen Aulin	July 12-Aug. 20
Tenaya Lake	July 12-Aug. 20

Accommodations at the various High Sierra Camps consist of dormitory tents and cots, ample blankets and bed linen. Meals are served camp style in dining tent and include simple, wholesome food.

SADDLE HORSE SERVICE (YOSEMITE TRANSPORTATION SYSTEM)

(Riding on floor of Yosemite Valley—All year service)

Horse, full day	\$4.00
Horse, morning—half day	2.50
Horse, afternoon—half day	2.00
Guide or escort, full day	7.00
Guide or escort, half day	4.00
Riding lessons, per person per hour	1.00
Burro, full day	2.00
Burro, half day	1.50
Pony, ride around track	.10
Pony, per hour	1.00
Pony, per half day	3.00

Full day consists of 8 hours. Half day consists of 4 hours, terminating at 12 m. or 6 p. m. Horses mounted at and to be returned to stables.

GLACIER POINT SADDLE ANIMAL TRAIN

The Yosemite Transportation System operates daily, from May 15 to September 1, a saddle animal train from Yosemite Valley to Glacier Point on south rim, going via Vernal and Nevada Falls Trail and returning via Four-Mile Trail, 16 miles in a day, with free guide service, at a rate of \$5 per person.

SADDLE ANIMAL TRAIL TRIPS WITH FREE GUIDE SERVICE

The Yosemite Transportation System will provide free guide service on the following saddle animal trips for the minimum number of persons named. One-day trips unless otherwise specified:

Trip	Round trip mileage	Round trip rate	Minimum number persons
From Yosemite Valley to Glacier Point, going via Vernal and Nevada Falls Trail, returning via Four-Mile Trail	16	\$5.00	See above
Eagle Peak or top of Yosemite Falls	13	5.00	5
Glacier Point, going via Four-Mile Trail returning via Pohono Trail to Fort Monroe with motor car transportation thence via Inspiration Point to Yosemite Valley, a one day trip	24	9.00	5
Top of Nevada Fall, via Vernal Fall	12	5.00	5
Vernal Fall (Lady Franklin Rock) half day trip	8	3.00	5
Half Dome	16	5.00	5
Clouds Rest	24	5.00	5
Merced Lake (2-day trip)	32	10.00	5

YOSEMITE NATIONAL PARK BELONGS TO YOU. HELP TAKE CARE OF IT.

TUOLUMNE MEADOWS AND WAWONA SADDLE SERVICE

The Yosemite Transportation System will rent saddle horses at Tuolumne Meadows Lodge and Wawona Hotel, at \$3.50 per day of eight hours, or \$2.00 per half day of four hours, terminating at 12 noon or 5:30 p. m.

The following trips will be operated from Tuolumne Meadows Lodge with free guide service for the minimum number of persons named. All one day trips.

From Tuolumne Meadows to—	Round trip mileage	Round trip rate	Minimum number persons
Lyell Fork Base Camp	16	\$5.00	4
Mount Dana	16	5.00	4
Mount Conness via Young Lake	16	5.00	4
Waterwheels via Glen Aulin	22	5.00	4
Fletcher Lake	16	5.00	4
Ireland Lake	12	5.00	4
Columbia Finger via Sunrise Trail	16	5.00	4

SADDLE AND PACK HORSES ARE ALSO AVAILABLE AT MATHER AT REASONABLE RATES.

GARAGE SERVICE YOSEMITE VALLEY

Emergency road service car and driver, per hour traveled in round trip	\$5.00
Storage at garage, per night May 1 to October 1	.50
Storage at garage, per day October 1 to May 1	.75
Calling for and delivering car on storage	.25

MECHANIC'S WORK

Machine and blacksmith work, per hour, minimum one-fourth hour	\$2.25
Mechanic, per hour, minimum one-fourth hour	2.00
Helper, per hour, minimum one-fourth hour	1.50

The above scale of labor is effective between 8:00 a. m. and 5:00 p. m. All labor outside of these hours is designated as overtime and charged for at rate of time and one-half.

WASHING CARS

Fords, Chevrolets, Plymouth	\$2.00
Other roadsters	2.50
Other coupes or touring cars	3.00
Other sedans	3.50
Wire wheels, per car, extra	.50

CAR GREASING—\$1.25 to \$2.00 according to make of car.

For complete rates see Booklet of General Information or inquire at hotel offices.

See maps on other side

FOR FURTHER INFORMATION CONCERNING YOSEMITE OR OTHER NATIONAL PARKS, ADDRESS NATIONAL PARK SERVICE, WASHINGTON, D. C.

A PAMPHLET ENTITLED "CIRCULAR OF GENERAL INFORMATION" CONTAINING MORE DETAILED INFORMATION ON THE PARK MAY BE HAD FREE OF CHARGE UPON REQUEST AT ANY RANGER STATION, OR AT THE ADMINISTRATIVE BUILDING IN YOSEMITE VALLEY.

YOSEMITE NATIONAL PARK MOTORISTS GUIDE

DISTANCES TO YOSEMITE

VIA YOSEMITE ALL YEAR HIGHWAY

From	Miles	From	Miles
San Francisco	206	Manteca	137
Oakland	205	San Diego	487
Sacramento	198	Salinas	186
Stockton	149	Long Beach	383
Modesto	121	Tracy	166
Merced	83	Los Angeles	358
Manteca	45	Bakersfield	247
El Portal	14	Fresno	138

VIA WAWONA ROAD

San Francisco	211	Coarse Gold	56
Oakland	210	San Diego	492
Haywards	196	Salinas	379
Livermore	177	Santa Anna	369
Tracy	151	Long Beach	345
Manteca	143	Los Angeles	323
Modesto	127	Hollywood	332
Turlock	114	Bakersfield	212
Livingston	104	Tulare	147
Merced	89	Fresno	103
Mormon Bar	52	Madera	92
Wawona	27	Raymond	72
Chinquapin Ranger Sta.	14	Miami Lodge	38
Inspiration Point	7	Fish Camp	33

VIA BIG OAK FLAT ROAD

San Francisco	187	Oakdale	97
Oakland	186	Knights Ferry	85
Haywards	171	Chinese Camp	67
Sacramento via Oak Flat	179	Knights Ferry	62
Sacramento via Farmington	174	Priest's	52
Livermore	151	Groveland	48
Tracy	131	Buck Meadows	49
Stockton via Oakdale	127	Carl Inn	23
Stockton via Farmington	122	Tuolumne Grove	17
Manteca	118	Crane Flat Ranger Sta.	16
Modesto	112	Gentry Checking Sta.	17
Escalon	106	El Capitan Checking Sta.	4

VIA TIOGA ROAD

Los Angeles	443	Mono Lake	92
Tahoe Tavern	233	Tioga Pass	75
Reno	231	Tuolumne Ranger Sta.	69
Glenn Brook	211	Tenaya Lake	60
Canon City	201	Yosemite Creek	54
Minden	184	Aspen Valley Ranger Sta.	29
Blahos	159	Carl Inn	23
Coleville	153	Crane Flat Ranger Sta.	16
Mammoth	118	Gentry Checking Sta.	17
Bridgeport	611		8

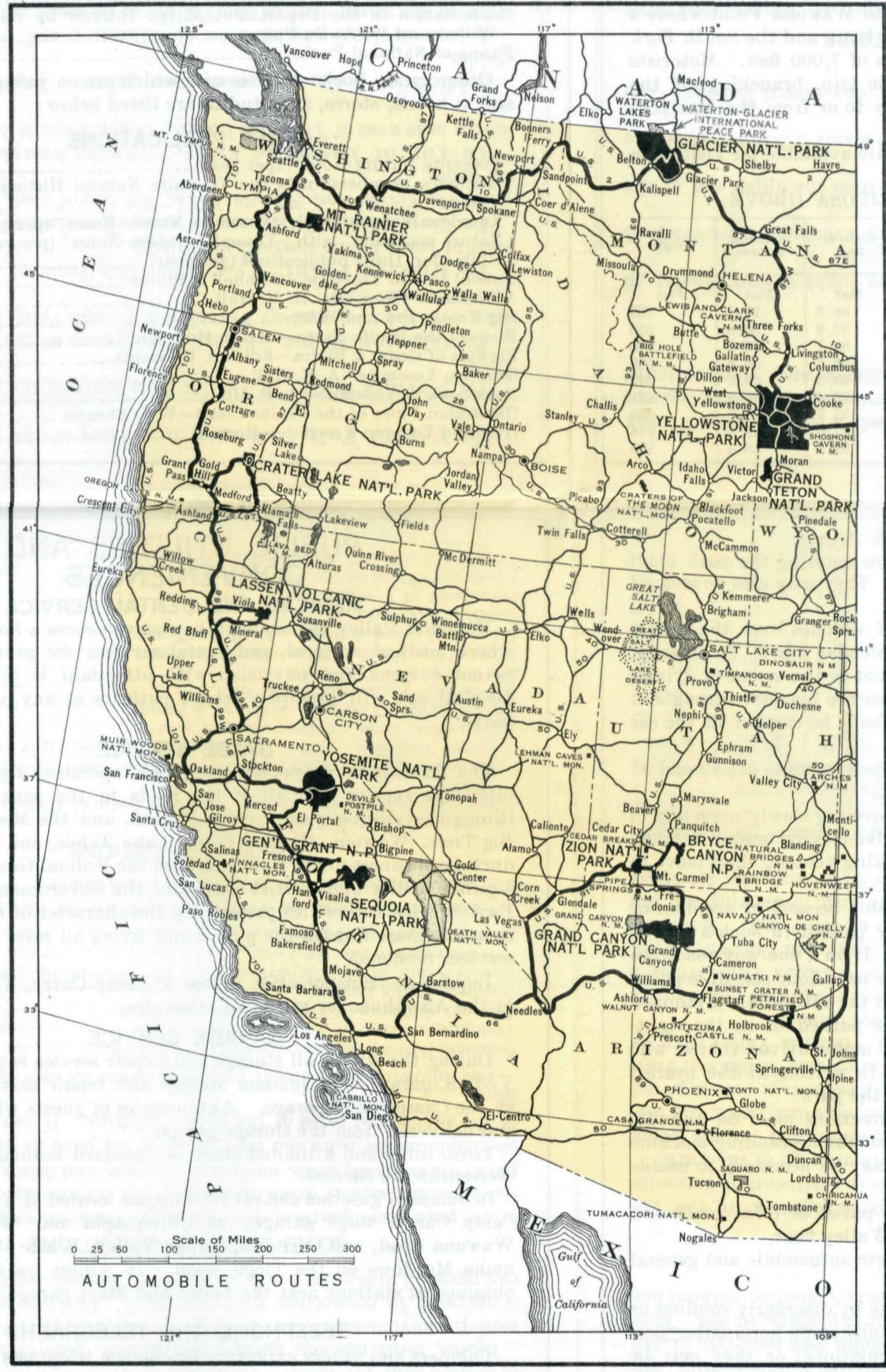
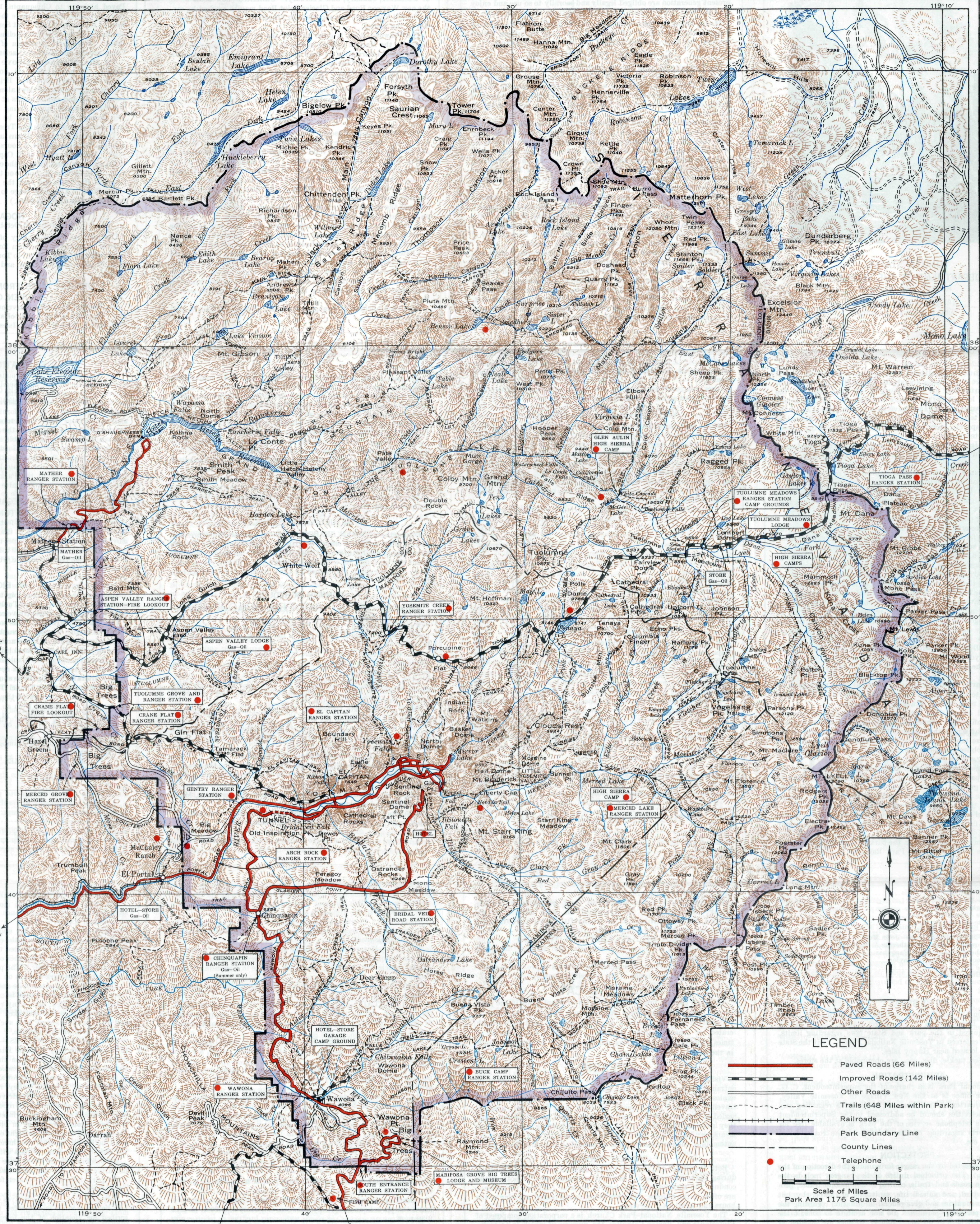
DISTANCES FROM YOSEMITE NEW VILLAGE

VIA BIG OLD FLAT AND TIOGA ROADS

To	Miles	To	Miles
El Capitan Checking Sta.	2.8	Hatch Hatchy	37.8
Gentry Checking Sta.	7.8	Aspen Valley Ranger Sta.	28.6
Tamrock Flat	11.1	Yosemite Creek Ranger Sta.	48.8
Crane Flat Ranger Sta.	16.2	Tenaya Lake	58.4
Tuolumne Grove	17.4	Tuolumne Ranger Sta.	67.3
Carl Inn	22.5	Tuolumne Lodge	68.0
Mather Sta.	28.8	Tioga Pass	73.6

VIA WAWONA ROAD

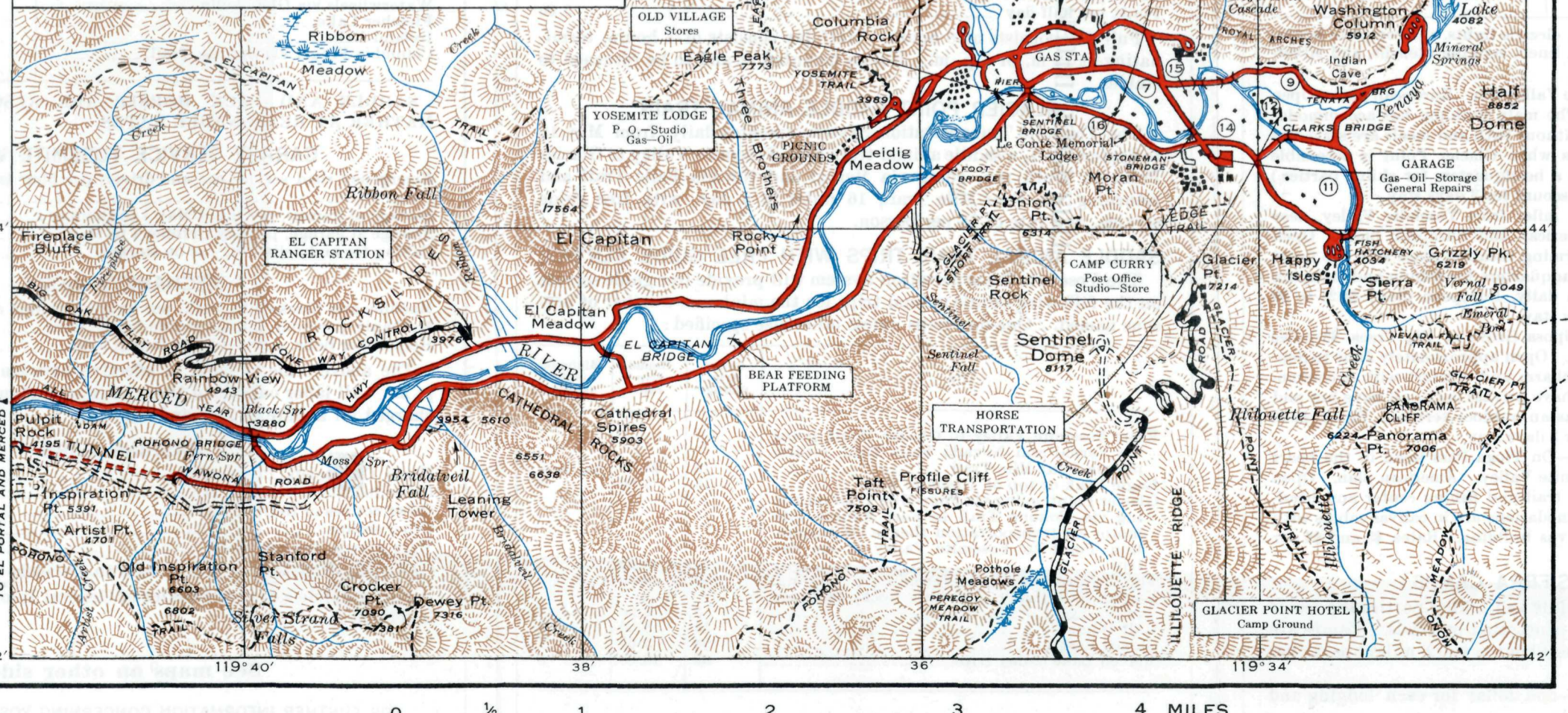
Bridalveil Fall	4.6	Glacier Point	30.3
Tunnel	6.2	Wawona	26.9
Inspiration Point	7.4	Mariposa Grove	35.5
Chinquapin Ranger Sta. and Glacier	14.0	Big Tree Lodge	36.0
Point Junction	14.0	Mariposa Grove Ranger Sta.	31.5
Bridalveil Creek	22.3	Wawona Point	37.8



YOSEMITE VALLEY

DISTANCES FROM YOSEMITE NEW VILLAGE TO

Yosemite Lodge	1.6
Camp Curry	1.4
Housing Camp Headquarters	1.4
General Garage	1.3
Curry Garage	1.3
Happy Isles	2.4
Mirror Lake	2.4
Yosemite Falls	6.6
Pohono Bridge	5.6
Bridalveil Fall	4.7
Cascade Falls	8.5
El Capitan Bridge	3.5
El Capitan Ranger Station	3.8
Bridalveil	4.6
Gentry Ranger Station	7.8
Tunnel	6.2
Inspiration Point	7.4
Camp 7	1.2
Camp 14	1.8
Camp 15	1.2
Camp 16	1.8



MAP SHOWING ALL ROUTES TO YOSEMITE NATIONAL PARK

