



# YOSEMITE NATIONAL PARK



## HELP PREVENT FIRES

Be careful with burning matches and tobacco

Put out your camp fire before leaving

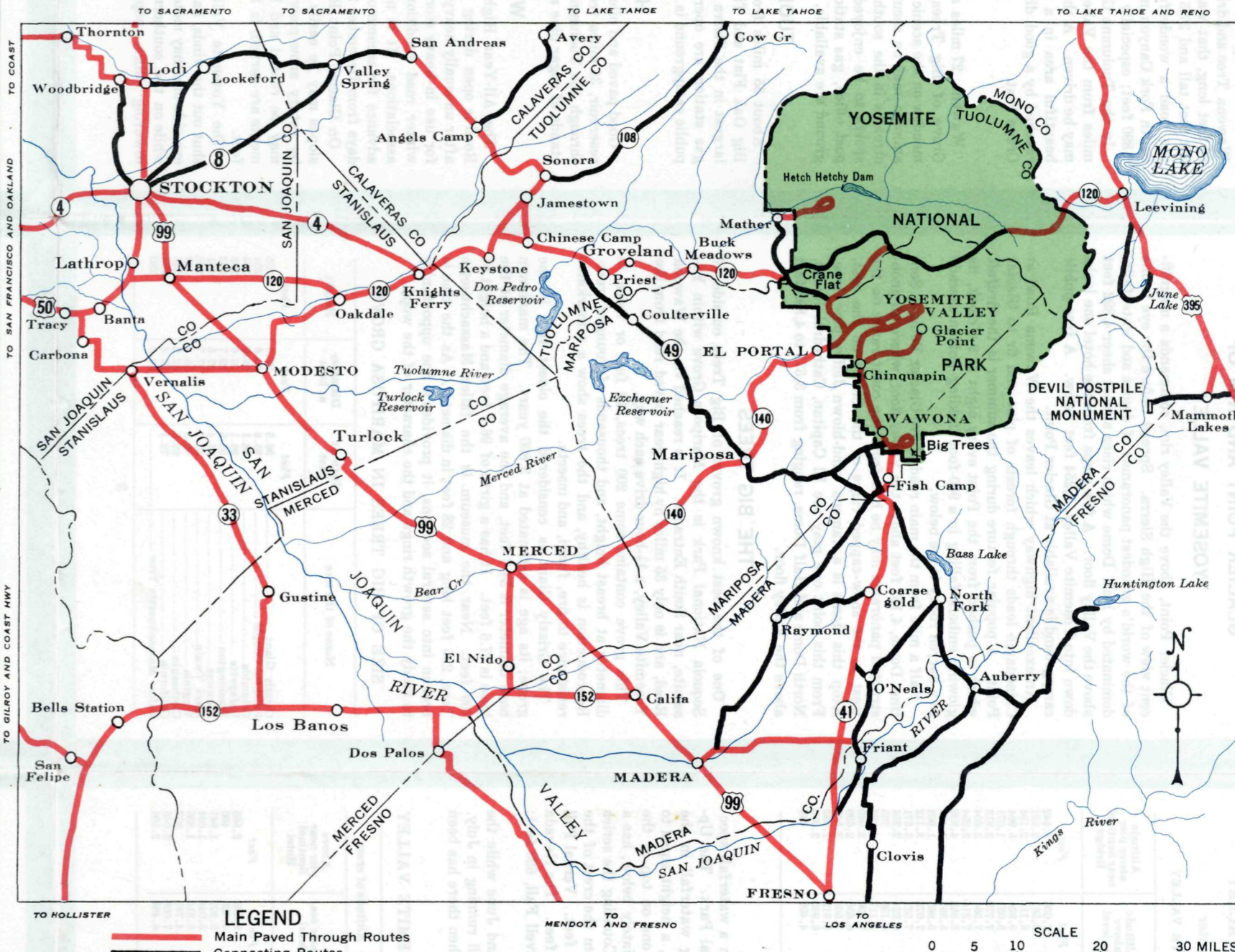
Do not feed or molest the bears—they are wild animals and may be dangerous

MAXIMUM SPEED 35 MILES

## DISTANCES FROM YOSEMITE VALLEY

GOVERNMENT CENTER			
VIA ALL YEAR HIGHWAY			
To:	Miles	To:	Miles
El Portal	14	Make Tahoe via Sacramento	316
Mariposa	44	Salinas	184
Merced	81	Monterey	204
Modesto	117	Gilroy	166
Manteca	133	Fresno	239
Oakland	202	Sequoia National Park	229
San Francisco	211	Bakersfield	244
San Francisco (via Pacheco Pass)	249	Los Angeles	356
Stockton	146	San Diego	484
Sacramento	195	Boulder Dam	563
Reno via Sacramento	334	Kings Canyon National Park	222
VIA WAWONA ROAD			
To:	Miles	To:	Miles
Tunnel	6	Bakersfield	201
Chinquapin	14	Los Angeles	313
Glacier Point	30	San Diego	439
Wawona	27	Sequoia National Park	187
South Entrance	31	Stockton	88
Big Trees Lodge (Mariposa Grove)	36	San Francisco via Madera and	88
Fish Camp	33	Modesto	250
Coarsegold	55	Kings Canyon National Park	180
Fresno	94		
VIA BIG OAK FLAT ROAD			
To:	Miles	To:	Miles
Big Oak Flat Road	6	Oakdale	96
Crane Flat	16	Manteca	117
Tuolumne Grove	17	Oakland	186
Mather	29	San Francisco	195
Hetch Hetchy Dam	38	Modesto	112
Groveland	49	Stockton	127
Chinese Camp	65	Sacramento	176
Sonora	76	Lake Tahoe via Placerville	223
VIA TIOGA ROAD			
To:	Miles	To:	Miles
Crane Flat	16	Carson City	188
Yosemite Creek	34	Lake Tahoe	198
Tenaya Lake	47	Reno	218
Tuolumne Meadows	55	Mammoth Lakes	106
Tioga Pass	62	Bishop	146
Mono Lake	76	Los Angeles	418

## ROUTES TO YOSEMITE NATIONAL PARK



## ROADS IN YOSEMITE VALLEY

