



Yosemite Accessibility Guide

January 2015

Welcome to Yosemite National Park! The park strives for full and equal participation for all visitors and continually upgrades facilities, programs and services to improve accessibility. This guide outlines a variety of accessible services, facilities, and activities available in Yosemite. Within each area, it describes ways for people with sight, hearing, and mobility impairments to enjoy Yosemite. If you do not need this guide after your visit, please return it to any visitor center or entrance station.

The *Yosemite Accessibility Guide* is available at entrance stations, visitor centers and online at www.nps.gov/yose/planyourvisit/upload/access.pdf. For general park information and descriptions of services, programs and activities, see the *Yosemite Guide*, available at entrance stations, visitor centers or online at www.nps.gov/yose/planyourvisit/guide.htm.

We welcome your comments and suggestions on ways to improve accessibility for visitors to Yosemite National Park. Discrimination on the basis of disability in federally conducted programs or activities of the Department of the Interior is prohibited.

Contact Information:

Accessibility Coordinator
209-379-1035
yose_accessibility@nps.gov



United States Department of the Interior

NATIONAL PARK SERVICE

Yosemite National Park
P.O. Box 577
Yosemite, California 95389

IN REPLY REFER TO:

P4215 (YOSE-PM)

Message from the Superintendent:

Yosemite National Park is a wonderful and beautiful place with towering trees, thundering waterfalls and massive granite formations. Set aside as a National Park in 1890, Yosemite is a place visited by almost four million visitors a year. Yosemite's goal is to provide the highest level of accessibility to our visitors as possible. Each year has shown marked improvements in both physical and programmatic accessibility at Yosemite.

The staff at Yosemite is working hard to correct and resolve accessibility deficiencies throughout the park. By using principles of universal design, Yosemite is committed to providing physical access to the greatest number of individuals. From designing and building new facilities to the rehabilitation of older buildings, accessibility has become a key component of all projects. The park also offers a free fully accessible shuttle bus service in Yosemite Valley to all park visitors.

Yosemite has won the following Accessibility Awards: 2010 National Park Service Sustained Park Achievement – Provision and Improvement of Accessibility over a Sustained Period of Time, 2009 National Park Service National Accessibility Achievement Award for Programmatic Achievement – Improving Access to the National Park Service Programs and 2008 Programmatic Accessibility Achievement Award – Deaf Services Program. Yosemite provides American Sign Language (ASL) interpreters for visitors and has added captioning or provides ASL interpreters at all public films shown in the park. Additionally, we have available audio descriptions, podcasts and multiple publications in large print or Braille for visitors with visual impairments.

During the last several years, the park has added accessible campsites in Yosemite Valley, Wawona, and the Tioga Road area. The campgrounds where these sites have been added now include accessible restroom facilities, paths of travel, and some campsites with raised tent platforms. Future plans include the addition of more accessible campsites each year until we meet or exceed the required number of accessible campsites. Many picnic areas parkwide have been rehabilitated to include accessible paths of travel, picnic tables, and grills.

As Yosemite continues to address current accessibility issues it is important to remember that accessibility is an integral part of our mission. Providing accessible programs and facilities to the broadest population of our visitors is everyone's task and responsibility.

Don L. Neubacher
Superintendent



Accessibility Guide

Yosemite National Park

January 2015



Table of Contents

2 General Information

- 2 Access Passes
- 2 Temporary Accessible Parking Placard
- 3 Parking
- 3 Service Animals
- 3 Wheelchairs and Mobility Devices
- 4 Rules for Use of OPDMDs
- 5 Wheelchair and Bicycle Rental
- 5 Shuttle Buses
- 5 YARTS – Bus Service to Yosemite
- 5 Telephones, Video Phone & TTYs
- 6 Deaf Services Program
- 6 Requesting a Sign Language Interpreter

7 Services

- 7 Sightseeing by Car
- 7 Tours
- 7 Trail Rides
- 8 Gas
- 8 Post Offices

8 Health Concerns & Medical Facilities

- 9 Weather
- 9 Elevation
- 9 Smoke & Fire
- 9 Medical Facilities - In & Around Yosemite

10 Learning About Yosemite

- 10 Ranger Interpretive Programs
- 10 Films about Yosemite at Visitor Center
- 11 On-Line Resources, Videos & Webcams
- 11 Publications
- 12 Environmental Education

13 Lodging, Camping & Picnic Facilities

- 13 Lodging Information
- 14 Campground Reservations
- 15 Picnic Areas

16 Places of Interest in Yosemite

- 16 Yosemite Valley
- 20 Northern Yosemite
- 22 Southern Yosemite

24 Mariposa Grove – Closure Notice

26 Yosemite Valley Accessibility Map



Accessibility Guide

Yosemite National Park

January 2015

General Information

Yosemite National Park, set aside in 1890, embraces spectacular mountain and valley scenery in the Sierra Nevada mountain range. Park highlights include Yosemite Valley’s high cliffs and waterfalls; Wawona's history center and historic hotel; the Mariposa Grove of giant sequoias; Glacier Point's spectacular view of Yosemite Valley and the high country (summer through fall); Tuolumne Meadows, a large subalpine meadow surrounded by high mountain peaks (summer through fall); and Hetch Hetchy, a secluded valley with a reservoir formed by a dam on the Tuolumne River. Yosemite offers unparalleled natural views and soundscapes, and natural objects for tactile exploration. These opportunities are available in all areas of the park.

Access Passes

U.S. citizens or permanent residents who are permanently disabled or blind are eligible for the Interagency Access Pass. This **free**, lifetime admission pass is valid at National Park Service, Bureau of Land Management, U.S. Fish and Wildlife Service, U.S. Forest Service and Bureau of Reclamation sites. It provides the pass owner and accompanying passengers in a private vehicle free admission to Yosemite National Park.



The Access Pass is available at no charge when obtained in person at designated locations or for a \$10 processing fee online with proof of eligibility. The pass is nontransferable and does not generally cover or reduce special recreation permit fees or fees charged by concessionaires. Visitors with Access Passes receive a 50 percent discount on camping in Yosemite. In Yosemite, the Access Pass is available at all park entrance stations and visitor centers.

Visitors must supply their Access Pass number when making a camping reservation. For more information or to download an application, visit www.nps.gov/fees_passes.htm



Temporary Accessible Parking Placard

For visitors who are **temporarily disabled or do not have their permanent accessible parking placard with them**, a temporary placard is available at park entrance stations and visitor centers.

When displayed on a vehicle dashboard, the placard allows parking in designated accessible spaces and driving on some paved roads closed to other private-vehicle traffic such as the Happy Isles Loop Road and Mirror Lake Road. Pedestrians, bicyclists, and shuttle buses share these roads, therefore, emergency flashers must be used, and the speed limit is 15 miles per hour.



Accessibility Guide

Yosemite National Park

January 2015

Parking

Designated accessible spaces are marked with the international access symbol and are reserved for vehicles displaying an accessible parking placard or license plate. A map with accessible parking locations, picnic areas, restrooms and camping locations for Yosemite Valley is on the back of this Guide.

Service Animals

Service animals are defined as dogs that are individually trained to do work or perform tasks for people with disabilities. Examples of such work or tasks include guiding people who are blind, alerting people who are deaf, pulling a wheelchair, alerting and protecting a person who is having a seizure, reminding a person with mental illness to take prescribed medications, calming a person with Post Traumatic Stress Disorder during an anxiety attack, or performing other duties.

Service animals are working animals, not pets. The work or task a dog has been trained to provide must be directly related to the person's disability. Dogs whose sole function is to provide comfort or emotional support do not qualify as service animals.

Service animals are allowed in park facilities and on shuttle buses if they meet the legal definition of a service animal found at www.ada.gov/service_animals_2010.htm. Service animals must be leashed at all times, must not disturb wildlife, must not be excessively noisy, and their excrement must be disposed of properly for the area they are in. It is common for other visitors to ask questions, make unwanted remarks, or to report service animals to law enforcement officers if they are not aware the dog is a service animal and allowed to be in locations where pets are generally not allowed. For these reasons, it is recommended that service animals wear a visible identification vest while in the Park.

Service-dogs-in-training are not considered service animals and do not meet the legal definition of a service animal. They are pets and therefore must abide by the **Yosemite Pet Regulations** found at www.nps.gov/yose/planyourvisit/pets.htm.

Wheelchairs and Mobility Devices

Manual Wheelchair means a device that is propelled by human power, designed for and used by a mobility-impaired person.

Motorized Wheelchair means a self-propelled wheeled device, designed solely for and used by a mobility-impaired person for locomotion that is both capable of and suitable for use in indoor pedestrian areas.

Use of Wheelchairs and OPDMDs

The use of a manual or motorized wheelchair by an individual with limited mobility is allowed to the extent that the same would apply to a pedestrian. The information in this chapter is



Accessibility Guide

Yosemite National Park

January 2015

intended to treat a person using a manual or motorized wheelchair as a pedestrian, and is not intended to restrict the activities of such a person beyond the degree that the activities of a pedestrian are restricted by the same regulations.

The use of Other Power Driven Mobility Devices (OPDMDs), while allowed, is restricted to persons with mobility disabilities and such use is limited to paved trails, paved bike paths, and paved multi-use paths for safety and resource protection. A person using an OPDMD must yield the right of way to pedestrians and persons using wheel chairs.

Rules for Use of OPDMDs

The following conditions apply:

- OPDMDs are not permitted to be operated on park roadways. An OPDMD is only allowed on paved trails, paved bike paths, and paved multi-use paths.
- Operators must be 16 years of age or older.
- OPDMDs may not exceed 36 inches in width.
- An OPDMD must be placarded and display a universal handicap decal.
- Maximum speed while operating an OPDMD cannot exceed 6 mph.
- The engine noise level from an OPDMD may not exceed 60 dB measured on the A-weighted scale at a distance of 50 feet.
- OPDMDs shall not exceed zero emissions during use.
- A person riding an OPDMD must always yield to pedestrians.
- Group size is limited to no more than four OPDMDs.
- Use of an OPDMD is prohibited in undeveloped and designated Wilderness areas.
- The use of an OPDMD by a non-disabled person is prohibited in the park.
- Every OPDMD shall be equipped with the following safety mechanisms:
 - Front, rear, and side reflectors.
 - A system that enables the operator to bring the OPDMD to a controlled stop.
 - If the OPDMD is operated between one-half hour after sunset and one-half hour before sunrise, a lamp emitting a white light that, while the OPDMD is in motion, illuminates the area in front of the operator and is visible from a distance of 300 feet in front of the OPDMD.
 - A sound emitting device that can be activated from time to time by the operator.
- No more than one person may ride upon an OPDMD at any time.





Accessibility Guide

Yosemite National Park

January 2015

Wheelchair & Bicycle Rental

A limited number of manual wheelchairs and electric scooters are available for rent at the bicycle rental stands at Yosemite Lodge and Curry Village during the summer months. Reservations recommended. The bicycle stand is open during the summer season. When the bicycle stand is closed contact Sean Costello, the bicycle stand manager, for rental information at scostel@delawarenorth.com



Bicycles can be rented at Yosemite Lodge and the Curry Village rental stands. A tandem bicycle (for visitors with sight and other impairments) and a hand-cranked bicycle are available. Reservations are suggested: Call 209-372-8319 or 209-372-1208.

Shuttle Buses

Free shuttle buses operate in several areas of the park. All buses are accessible with wheelchair lifts and tie-downs. Maximum size for wheelchairs on shuttle buses and tour buses is 24 inches wide x 46 inches long with a weight limit on tour buses of 750 pounds. Bus drivers will help passengers on and off buses or notify them of stops. If you need assistance, ask the bus driver. The shuttle bus may accommodate OPDMDs, which meet the size limitation and are suitable for use in indoor pedestrian areas. Shuttle bus service is available in the following locations:

- **Yosemite Valley:** throughout the Yosemite Village area (year-round) and to El Capitan Bridge and Tuolumne Meadows (summer only).
- **Wawona to Mariposa Grove:** from the Wawona Store & Pioneer Gift Shop to the Mariposa Grove of Giant Sequoias (summer only).
- **Wawona to Yosemite Valley:** from the Wawona Hotel to Yosemite Valley at 8:30 a.m. return trip leaves Yosemite Valley at 3:30 p.m. (summer only).
- **Tuolumne Meadows:** from Olmsted Point to Tioga Pass (summer only).

YARTS – Bus Service to Yosemite

The Yosemite Area Regional Transportation Services (YARTS) is the only public transportation service that provides regularly scheduled daily service to Yosemite National Park from Mariposa and Merced. Most YARTS buses are equipped with lifts. However, YARTS requests you contact them at least 48 hours ahead of your trip to ensure that a lift-equipped bus is available to you. YARTS phone number is 1-877-989-2787 or email them on their website at www.yarts.com/.

Telephones, Video Phones & TTYs (Teletypewriter)

Cell phone signal strength is marginal in most of Yosemite. There is a video phone located in the lobby of Yosemite Lodge. Pay phones are located throughout the park; most have volume control and many have TTYs.



Accessibility Guide

Yosemite National Park

January 2015

Pay phones with TTYs are available at Yosemite Valley Visitor Center, the lobby of Yosemite Lodge, and on the mezzanine of the Ahwahnee Hotel. Free TTY phone kits are also available for guests to take to their rooms at Yosemite Lodge and the Ahwahnee Hotel. The Wawona Hotel has TTY phone kits to use in conjunction with the phone in the manager's office. Curry Village has kits, too, which include smoke alarm, light flasher doorbell and shake-awake, but have no phones in the room in which to use a TTY device.

Contact Information for Yosemite National Park is:

- TTY general park information – 209-372-4726
- Videophone general information – 209-222-3944
- TTY Yosemite lodging reservations – 559-439-3002
- Online hotel reservations www.yosemitepark.com/lodging.aspx
- TTY Yosemite campground reservations – 877-833-6777
- Online campground reservations www.recreation.gov

Using a TTY, deaf callers can also dial 711 to use the free relay service, which provides an operator to assist people who are deaf in making calls to voice-only numbers.

Deaf Services Program

Yosemite's Deaf Services Program provides or makes available interpreting services for all official park programs, including tours, ranger programs, and theater presentations. Requests for sign language interpretation should be made at least two weeks in advance. **Interpreters** are available at all park Visitor Centers to assist deaf visitors. Additional information on the Deaf Services Program and sign language videos on the Yosemite's Deaf Services Program and other topics are available at www.nps.gov/yose/planyourvisit/deafservices.htm.

Requesting a Sign Language Interpretation

Yosemite contracts with outside ASL interpreters to provide sign language interpretation for visitors to the park, therefore, advance notice (at least two weeks) is required to ensure an ASL interpreter is available. We will make every effort to provide an ASL interpreter, however, last minute requests may be difficult to accommodate due to distance and availability. For ASL interpretation for Yosemite National Park and Yosemite Conservancy programs listed in the Yosemite Guide, contact Deaf Services at 209-379-5250 (voice/text) or by email at yose_deaf_services@nps.gov. For sign language interpretation on paid tours provided by DNC, call the Yosemite Lodge tour desk at (209) 372-1240.



Captioning

Captioning is available on most of the park's web videos and the films *Spirit of Yosemite* and *Yosemite: A Gathering of Spirit* shown in the Yosemite Theater behind the Valley Visitor Center.



Accessibility Guide

Yosemite National Park

January 2015

Sign Language Videos

Yosemite has created several informational sign language videos. Topics include requesting an interpreter, how and where to access the public video phone, how to obtain an Access Pass, and driving in the park. Additional videos are being developed. To view these videos, go to the Deaf Services homepage at www.nps.gov/yose/planyourvisit/deafservices.htm.

Assistive Listening Devices

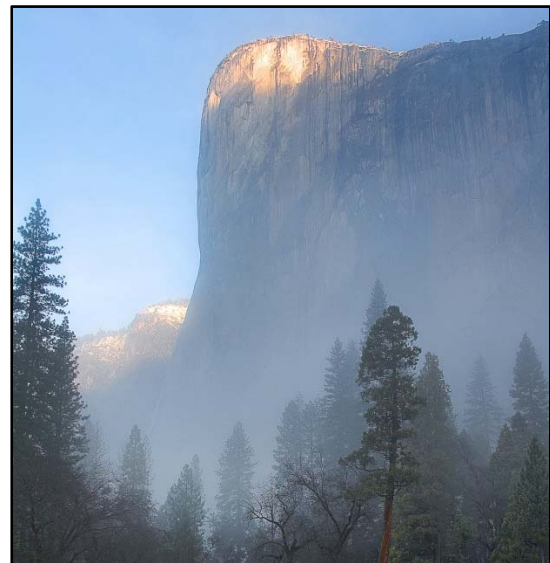
Ask at the Yosemite Valley Visitor Center about assistive listening devices for ranger-led programs, public events and tours in Yosemite Valley, Wawona, Glacier Point and Tuolumne Meadows. Lodging facilities at Curry Village, Yosemite Lodge, and the Ahwahnee have assistive listening devices that are available for interpretive programs at their locations. Guests should contact the DNC Parks & Resorts tour desk at 209-372-1240 in advance to request an assistive listening device for a program.

Services

Sightseeing by Car

Many of Yosemite's scenic vistas, waterfalls and other points of interest can be seen from park roads and overlooks. Sightseeing guidebooks, maps and other information are available on the park's website at:

www.nps.gov/yose/planyourvisit/touring.htm and at park visitor centers and retail outlets and can be purchased online from Yosemite Conservancy at www.yosemitestore.com.



Tours

Fee-based, open-air Yosemite Valley Floor trams run within the Valley all year. During the summer, fee-based enclosed motor coaches make trips from Yosemite Valley to Tuolumne Meadows, Glacier Point, and Grand Tour. Accessible tour vehicles for the above trips can be made available by prior arrangement. At least 48-hour notice is requested to ensure that an accessible tram or bus is available.

Contact DNC Parks & Resorts at the Yosemite Lodge tour desk, Curry Village tour desk or Yosemite Village tour desk (summer only). Call 209-372-4386 for schedule and fare information.

Trail Rides (Seasonal)

Stables in Yosemite Valley, Wawona, and Tuolumne Meadows offer trail rides during the summer months. They can tailor rides to specific needs; call at least 24 hours in advance: Yosemite Valley, 209-372-8348; Tuolumne Meadows 209-372-8427; or Wawona 209-375-6502.



Accessibility Guide

Yosemite National Park

January 2015

The restroom at the Yosemite Valley Stables is accessible, the Wawona Stable has an accessible portable toilet, but the restroom at the Tuolumne Meadows Stable is not accessible. More information on trail rides is available at www.yosemitepark.com/mule-horseback-rides.aspx.

Gas

Gas stations are located in El Portal, Wawona, Crane Flat, and (during the summer) Tuolumne Meadows. Pay-at-the-pump service is available with a debit or credit card 24 hours a day. Check *Yosemite Guide* for more details. Attendants can assist with fuel service during business hours.

Post Offices

There are post offices located at Yosemite Village, Yosemite Lodge, El Portal, and Wawona. The main post office (located in Yosemite Village) has accessible parking and a letter-drop box behind the building. Enter from the service road just north of the Degnan’s Deli off Village Drive. Accessible parking is also available at Yosemite Lodge, El Portal, and Wawona Post Offices. Hours of operation are listed below.

Post Office	Monday – Friday	Saturday
Yosemite Village	8:30 a.m. to 5:00 p.m.	10:00 a.m. to Noon
Yosemite Lodge	12:30 p.m. to 2:45 p.m.	Closed
El Portal	8:30 a.m. to 12:30 p.m. 1:30 p.m. to 5:00 p.m.	Closed
Wawona	9:00 a.m. to 5:00 p.m.	9:00 a.m. to Noon

Restaurant and Food Service

Food service facilities in Yosemite are wheelchair-accessible except:

- Tuolumne Meadows Lodge has two steps and no accessible restroom.
- White Wolf Lodge has four steps to reach the dining area. The restroom in the campground is accessible. White Wolf Lodge will be closed for construction during the summer of 2015.

Health Concerns & Medical Facilities

Weather – Temperatures in Yosemite vary widely depending on season, elevation, and time of day; they can change rapidly and unexpectedly. Summer daytime temperatures usually range from the 90s in Yosemite Valley and Wawona to the 70s in Tuolumne Meadows; nighttime lows usually range from the 50s in Yosemite Valley and Wawona to the 30s in Tuolumne Meadows. Snowy, rainy, or even sunny days are possible in winter, with daytime highs in Yosemite Valley and Wawona ranging from the 30s to 50s and lows in the upper 20s.

Pay attention to the weather, and be aware of extreme temperatures. Dress appropriately for the season (in layers, if possible); bring rain gear. Carry and drink plenty of water, and take rest breaks during physical activity.



Accessibility Guide

Yosemite National Park

January 2015

Elevation – Yosemite Valley is 4,200 feet above sea level. Outside the Valley, elevations range from 2,000 feet to nearly 10,000 feet above sea level. In southern Yosemite, Glacier Point is at 7,214 feet; Wawona is at 4,000 feet; and Mariposa Grove of Giant Sequoias range from 5,600 feet to 6,600 feet. In northern Yosemite, White Wolf is at 8,000 feet; Olmsted Point is 8,300 feet; and Tuolumne Meadows is 8,600 feet elevation.

Maximum Elevation on Roads Entering Yosemite Valley:

Approach	Road	Highest Elevation
From South	Wawona Road via Hwy 41 North	6,039 feet at Chinquapin
From West	Big Oak Flat Road via Hwy 120 East	6,192 feet at Crane Flat
From West	El Portal Road via Hwy 140 East	4,200 feet at Yosemite Valley
From East (May - Nov)	Tioga Road via Hwy 120 West	9,945 feet at Tioga Pass

Smoke & Fire – In Yosemite, fire is natural and important for maintaining healthy forests; smoky skies are possible in spring, summer, and fall. Wildland fires – often ignited by lightning – generally are allowed to burn. Trained fire crews use prescribed burns to clear unnatural build-up of plant material in developed areas. Fires in and around Yosemite can cause smoky conditions in all areas of the park. For more information about air quality in Yosemite and other parks visit www.nps.gov/yose/naturescience/aqmonitoring.htm.

Campgrounds can be very smoky. To improve air quality in Yosemite Valley during high visitation months, campfires are limited to the hours between 5:00 p.m. and 10:00 p.m., May 1st through September 30th. There are no time restrictions during the rest of the year, however, campfires must always be attended.

For a fire update, visitors with respiratory conditions should call 209-372-0200 (press 3, then 5) to speak with a ranger during business hours seven days a week or visit the park’s website at www.nps.gov/yose/parkmgmt/firemanagement.htm.

Medical Facilities – In & Around Yosemite

Yosemite Medical Clinic – The Yosemite Medical Clinic is in Yosemite Village. Services include a limited pharmacy, a laboratory, X-ray services, and physical therapy. Hours of operation vary seasonally, but emergency services, paramedics, and ambulance service are available 24 hours a day. The emergency rear entrance is accessible to wheelchairs. For clinic hours, see the *Yosemite Guide* or call 209-372-4637.



Medical Facilities Outside of Yosemite – Hospitals nearest to Yosemite are located in:

- Mariposa (west of the park, off Highway 140)
- Oakhurst (south of the park, off Highway 41) Urgent Care facility ONLY.
- Mammoth Lakes (southeast of the park off Highway 395; no access in winter)



Accessibility Guide

Yosemite National Park

January 2015

Medical Facilities Outside Yosemite with a Range of Services Include:

John C. Fremont Hospital 5189 Hospital Road Mariposa, CA 95338 209-966-3631	Northern Inyo Hospital 150 Pioneer Lane Bishop, CA 93514 760-873-5811	Tuolumne General Hospital 101 Hospital Road Sonora, CA 95370 209-533-7100
Adventist Community Clinic (Urgent Care only) 48677 Victoria Lane Oakhurst, CA 93644 559-683-2711	Horizons Unlimited Health Care Mariposa Clinic 5320 Highway 49 North Mariposa, CA 95338 209-966-2344	Sonora Regional Medical Center 1000 Greenley Road Sonora, CA 95370 209-536-5000
Mercy Medical Center 333 Mercy Avenue Merced, CA 95340 209-564-5000	Valley Children's Hospital 9300 Valley Children's Place Madera, CA 93638 559-353-5150	Mammoth Hospital 185 Sierra Park Road Mammoth Lakes, CA 93546 760-934-3311

Learning About Yosemite

There are four Visitor Centers in Yosemite located in Wawona, Tuolumne Meadows, Big Oak Flat and Yosemite Valley. Rangers in the park's Visitor Centers, wilderness centers, nature centers and museums are knowledgeable about Yosemite and are there to assist visitors with information about the park. While at the Visitor Center, explore exhibits and learn about Yosemite's spectacular landscapes, wildlife, history, natural resources, and how Yosemite has evolved through the centuries. Audio tours are available for Yosemite Valley Visitor Center Exhibit Hall (free) and Mariposa Grove of Giant Sequoias (fee based).

Ranger Interpretive Programs

See the *Yosemite Guide* for a complete list of seasonal ranger activities, which range from campfire programs and all-day hikes to talks about Yosemite topics. Ask at any visitor center for details, or visit online at www.nps.gov/yose/planyourvisit/guide.htm.

Free Films About Yosemite at the Valley Visitor Center

Shown on the hour and half hour, *Spirit of Yosemite* and *Yosemite: A Gathering of Spirit* are free short films about Yosemite. *Yosemite: A Gathering of Spirit* is shown on every hour on the hour and *Spirit of Yosemite* is shown on the half hour in the Yosemite Valley Theater behind the Valley Visitor Center. Both films are captioned and an audio transcription of *Spirit of Yosemite* is available at the information counter in the Valley Visitor Center.

Spirit of Yosemite –The film offers a superb introduction to the magnificent scenery, natural history, and cultural heritage of Yosemite National Park along with information on the historical influences that helped create it.



Accessibility Guide

Yosemite National Park

January 2015

Yosemite: A Gathering of Spirit – In honor of the 150th anniversary of the signing of the Yosemite Grant, filmmakers Ken Burns and Dayton Duncan bring you the story of the birth of the National Park idea and the individuals who dedicated their lives to creating our National Parks.

Online Information, Resources, Videos & Web Cams

The Yosemite National Park website has information to assist you in planning your visit and providing information on what you can expect during your stay here.

Yosemite Homepage: www.nps.gov/yose/index.htm

Plan Your Visit: www.nps.gov/yose/planyourvisit/index.htm

Basic Information: <http://www.nps.gov/yose/planyourvisit/basicinfo.htm>

Things to Do: www.nps.gov/yose/planyourvisit/things2do.htm

Camping in Yosemite: www.nps.gov/yose/planyourvisit/campground.htm

Hiking in Yosemite: www.nps.gov/yose/planyourvisit/hiking.htm


Seasonal Information: www.nps.gov/yose/planyourvisit/hours.htm

Deaf Services Homepage: www.nps.gov/yose/planyourvisit/deafservices.htm

Videos about Yosemite: www.nps.gov/yose/photosmultimedia/index.htm

Webcams: www.nps.gov/yose/photosmultimedia/webcams.htm

Publications

The *Yosemite Guide* provides information on activities, services and programs that are offered in Yosemite. There is a  symbol next to the program or activity to indicate if it is accessible, however, some programs or activities can be modified to meet your needs. Please contact the provider of the program or the Accessibility Coordinator for more information. Advance notice is required for some activities. Information on obtaining a sign language interpreter can be found at www.nps.gov/yose/planyourvisit/deafservices.htm

Yosemite Guide: www.nps.gov/yose/planyourvisit/guide.htm

Accessibility Guide: www.nps.gov/yose/planyourvisit/upload/access.pdf

Aphasia Guide: www.nps.gov/yose/planyourvisit/upload/aphasia-guide.pdf



Accessibility Guide

Yosemite National Park

January 2015

Park Publications – including books, maps, and other media about Yosemite – are available at visitor centers, lodging facilities and retail outlets throughout the park, or online at www.yosemiteconservancystore.com/233/Shop.htm. A version of this Accessibility Guide is produced in Braille and is available at the Visitor Center or by contacting the Park’s Accessibility Coordinator at 209-379-1138. Park information can be downloaded from the Yosemite’s website at www.nps.gov/yose, and the font size increased to improve readability for those needing large-print materials.

Audio Tours

Available for Yosemite Valley Visitor Center Exhibit Hall (free) and Mariposa Grove of Giant Sequoias (fee based).

Environmental Education

The National Park Service and two nonprofit park partners, NatureBridge and the Yosemite Conservancy, offer a variety of environmental education programs for children and adults.

National Park Service

Most educational programs in Yosemite are accessible to students with disabilities. Yosemite staff members work with teachers and school districts to ensure that every student can be included in field trips, camping trips, and other educational park activities.



The **Environmental Living Program** at the Pioneer Yosemite History Center (in Wawona) and the **Parks as Classrooms** programs serve students with a wide range of specific needs. Bringing students to the ultimate classroom for an engaging learning experience with nature. For further information, contact the park’s Education Branch at 209-375-9505.

NatureBridge

Residential field-science program for schools and other groups through NatureBridge can be tailored to accommodate specific needs. Sleep in the park and spend your days on the trail engaging in hands-on science, teambuilding and stewardship activities. For information, contact NatureBridge at 209-379-9511, or visit online at www.naturebridge.org.

Yosemite Conservancy

With advance notice, the Yosemite Conservancy will work with you to develop custom Outdoor Adventures for visitors with disabilities. Experience Yosemite your way with an unforgettable vacation you help create or one of the many pre-planned events and adventures. For more information, call 209-379-2317 or visit online at www.yosemiteconservancy.org.



Accessibility Guide

Yosemite National Park

January 2015

Lodging, Camping & Picnic Facilities

Lodging Information

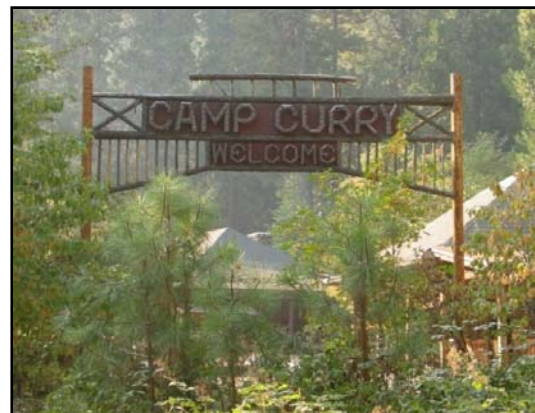
Guest lodging in Yosemite is provided by DNC Parks & Resorts at Yosemite, Inc. Reservations are recommended, call 801-559-5000 or TTY 559-439-3002; online information and reservations can be made at www.YosemitePark.com. See *Yosemite Guide* for hours of operation. Be sure to describe specific accessibility needs, so that an appropriate room may be offered. Some Valley lodging facilities have a kit for deaf visitors with a TTY, light flasher smoke alarm, light flasher doorbell, and shake-awake.

The Ahwahnee, a National Historic Landmark, has accessible hotel rooms and two accessible cottages with accessible bathrooms and showers. The ground floor of the hotel has an accessible dining room, bar, gift shop, patio, telephone, and drinking fountain. There is an accessible woman's restroom and unisex/family restroom located on the mezzanine that can be reached by elevator. The accessible men's restroom is located on the ground floor. Valet parking and designated accessible parking spaces are available. An accessible path of travel connects the hotel with the cabins.

Yosemite Lodge has accessible hotel rooms with accessible bathrooms and showers. The front lobby and tour desk are accessible. Accessible restrooms, restaurants, and gift shops are available. An outdoor accessible amphitheater offers evening programs spring through fall. Most walkways are paved and accessible with designated parking spaces available near the registration building and accessible hotel rooms. A video phone is available for deaf visitors.

Curry Village has two accessible cabins with bathrooms, one accessible hotel-standard room, and six accessible canvas tent cabins (four with heat). Accessible shower and restroom facilities are nearby for accommodations that do not have private bathrooms. Accessible paths of travel connect to all major services. The dining pavilion, pizza patio and bar, the mountaineering shop, and grocery/gift shop, are accessible. An accessible outdoor amphitheater offers evening programs spring through fall.

Designated accessible parking spaces are available near the registration office, restaurants, shopping and designated accessible accommodations.



Housekeeping Camp offers 3-sided canvas structures with beds, a place to prepare meals, and a concrete patio with a picnic table. Linens are not provided but can be rented and laundry facilities are available. Walkway surfaces include asphalt and sand. An accessible restroom and shower are located in Section H.



Accessibility Guide

Yosemite National Park

January 2015

Lodging Elsewhere in Yosemite National Park

Wawona Hotel has two accessible hotel rooms with accessible bathrooms and showers, an accessible dining room and recently remodeled accessible restrooms. Additional accessible upgrades are in the planning stage.

Currently, no accessible lodgings are available at Tuolumne Meadows or White Wolf. For updates, call DNC Parks & Resorts at Yosemite at 801-559-5000 or TTY 559-439-3002, or visit online at www.YosemitePark.com.

Lodging Outside Yosemite National Park

The nearest communities with lodging outside of Yosemite are: Fish Camp and Oakhurst to the south on Highway 41; El Portal and Mariposa to the west on Highway 140; Groveland to the west on Highway 120; and Lee Vining, June Lake, and Mammoth Lakes to the east on Highway 395 when Tioga Road is open. Accessibility at specific locations is unknown; however, many of the hotels in the area have accessible accommodations.

Campground Reservations

Seven of Yosemite's 13 campgrounds are on a reservation system. Campsites may be reserved through the **recreation.gov** reservation service by phoning 877-444-6777 in the United States and Canada or 518-885-3639 from outside the United States and Canada. TTY users may dial 877-833-6777. To reserve a campsite online, visit www.recreation.gov. Phone and online reservations may be made using Visa, MasterCard, American Express, or Discover cards. For more information on camping, see www.nps.gov/yose/planyourvisit/camping.htm.

The Valley Campground Reservation Office in the Curry Village is accessible and has one designated accessible parking space next to the campground office. Visitors with Access Passes receive a 50 percent discount on camping in Yosemite. (Pass holders must give their number when making a reservation and present the card upon check-in). Campgrounds in Yosemite during the summer months are always full. **Reservation should be made well in advance.**

Camping in Yosemite Valley

There are three campgrounds in Yosemite Valley that offer accessible campsites, suitable for wheelchairs. Lower Pines, Upper Pines and North Pines. Some of the campsites have a raised tent pad. All accessible sites have accessible fire rings and picnic tables with extended tops. Electric power to charge a wheelchair can be found at Lower Pines accessible site #14. Continuous electrical service is not guaranteed, therefore, this electrical outlet is not recommended for medical appliance use. You must bring your own extension cord and request access to the outlet.





Accessibility Guide

Yosemite National Park

January 2015

Camp 4 walk-in campground (first-come, first-served) has a hard-packed dirt access route leading to many level sites; however, none is designated accessible and there are no designated accessible parking spaces. The restroom is accessible. During the busy summer months, very few campsites are available. Do not count on the availability of a campsite.

Camping Elsewhere in Yosemite National Park

Plans are underway to make sites at all campgrounds outside Yosemite Valley accessible. Crane Flat and Wawona Campgrounds have accessible sites available. There are accessible sites in the Tuolumne Meadows Campground, Yosemite Creek Campground, Tamarack Flat Campground, White Wolf Campground and Porcupine Flat Campgrounds. Plans are underway to add accessible campsite to the few remaining campgrounds which do not have them.

Camping Outside Yosemite National Park

Campgrounds, some of which might be accessible, are available in areas outside Yosemite; see www.yosemite.com/tripplan/camping.html. For more information, call the recreation.gov at 877-444-6777; or visit online at www.recreation.gov.

Picnic Areas

Yosemite Valley, Wawona, Hetch Hetchy and many locations along the Tioga Road have several accessible picnic areas. Sites feature accessible picnic tables with extended tops, accessible restrooms, and, at those locations that have grills, the grills are accessible.

East Yosemite Valley: Lower Yosemite Fall has an accessible picnic area and restrooms. Because no parking is available, use an accessible shuttle bus. Sentinel Beach and Swinging Bridge have accessible picnic areas and accessible vault toilets. A project is currently in the planning stages to add accessible picnic facilities at Church Bowl. This project should be completed during the fall 2015.



West Yosemite Valley: El Capitan Picnic Area has a designated parking space with immediate paved access to a level, paved site with a picnic table with an extended tabletop, and an accessible vault toilet. The Cascades and Arch Rock entrance station have accessible picnic areas, restrooms, and parking.

Hetch Hetchy and Tioga Road Area: Yosemite Creek and Lembert Dome have accessible picnic areas, restrooms and parking. At Tenaya Lake, there are picnic areas at Murphy Creek (along the Tioga Road in the center of the lake) and East Beach on the eastern end of the lake. Both have accessible tables, restrooms and parking. At Hetch Hetchy there is a picnic area with accessible tables, restroom, grills and parking.



Accessibility Guide

Yosemite National Park

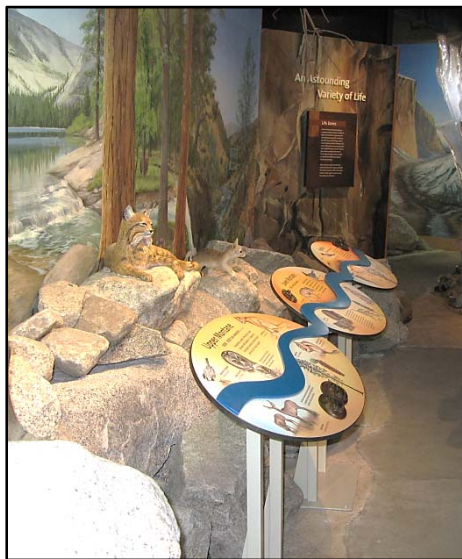
January 2015

At Wawona: Soldier Flat, north of Wawona and south of the Wawona Campground adjacent to the river, has picnic tables, grills and a toilet that are accessible. Pioneer Yosemite History Center has an accessible picnic area, restroom and parking.

Places of Interest in Yosemite

Yosemite Valley – Elevation 4,200 feet

Known as the “Incomparable Valley,” Yosemite Valley is seven miles long and one mile across at its widest point. Formed by glacial erosion over millions of years, Yosemite Valley is famous for its waterfalls and rock formations (including Half Dome and El Capitan). The Valley is the most-visited place in Yosemite, and it offers a variety of educational and recreational opportunities year round.



Yosemite Valley Visitor Center – Shuttle Stops #5 and #9

The Valley Visitor Center has an information desk, exhibits about the park, and a bookstore. An auditorium and a theater behind the visitor center offer presentations, including an award-winning orientation film, *Spirit of Yosemite* and a new film, *Yosemite: A Gathering of Spirit* directed by Ken Burns. These 23-minute films are shown free on the hour and half hour throughout the day in the theater.

The *Spirit of Yosemite* movie is captioned and audio described, as are video displays in the visitor center. *Yosemite: A Gathering of Spirit* is captioned. Ask the visitor desk for an assistive listening device.

The main exhibit hall is fully accessible with tactile exhibits, including the geologic and historic stories of Yosemite Valley. A tactile relief map is also available. An audio tour of the exhibits is available.

The visitor center has accessible power-assisted doors at front and rear entrances. Access to the theater and auditorium is through the front doors: proceed directly through the lobby and out the rear doors to the ramp (on the left). Accessible restrooms are located in the building to the west of the visitor center.

To reach the theater when the visitor center is closed, use the sidewalk to the left of the visitor center’s front entrance, pass the restrooms, and go up the concrete path on the left of the auditorium. An additional accessible path of travel is located behind the museum to the west of the auditorium.



Accessibility Guide

Yosemite National Park

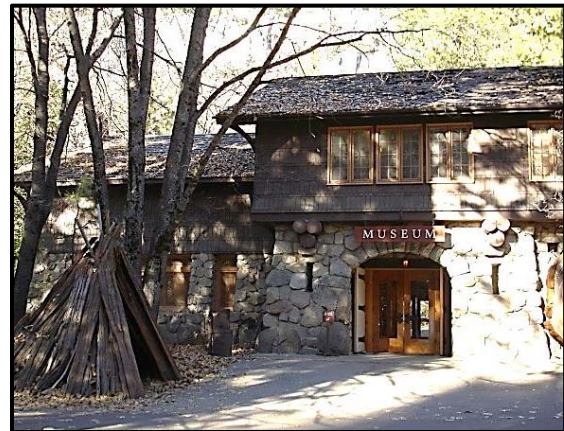
January 2015

A few accessible parking spaces are available just west of the visitor center. To reach these parking spaces, enter the Valley on Southside Drive, and go west (left) on Sentinel Drive. Turn left on Northside Drive, and follow the blue-and-white accessibility signs. Turn right on Village Drive. Stay on Village Drive until reaching the “Do Not Enter” sign marking the shuttle-bus route, and then turn left. Accessible parking spaces are on the right side of the road.

Visitors can also park at the day-visitor parking area and take the free shuttle bus, which has wheelchair lifts and tie-downs, to the visitor center (summer only).

Yosemite Museum – Shuttle Stops #5 and #9

The Yosemite Museum has an art gallery with changing exhibits and the Indian Cultural Exhibit. The Indian Cultural Exhibit offers displays and demonstrations relating to the culture and lives of the Ahwahneechee people who inhabited Yosemite Valley. In front of the Museum is a cross-section of a Giant Sequoia tree that visitors can touch and a recreation of an umacha, a Miwok and Paiute cedar bark house. Interpretive rangers are available to provide additional information.



Indian Village of Ahwahnee – Shuttle Stops #5 and #9

Behind the museum and the visitor center is the reconstructed Indian Village of Ahwahnee, which offers outdoor displays about the culture and lives of the Ahwahneechee inhabitants of Yosemite Valley.

A short, partially paved loop trail winding through the village has displays that incorporate audio buttons. The village’s central area is level but unpaved.

The Ansel Adams Gallery – Shuttle Stops #5 and #9

Showcasing the work of Ansel Adams, contemporary photographers, and other fine artists, the gallery is open daily. For more information, contact the gallery at 209-372-4413, or visit online at www.anseladams.com.

The gallery’s main floor is accessible by ramp at the front. The upper level is accessible by an outside path (with a short slope of 8 percent) or by steps inside.

Yosemite Art Center – Shuttle Stop #2

Located south of the Yosemite Village Store, the Yosemite Art and Education Center, operated by the Yosemite Conservancy, offers art classes during the summer and fall. For information and a schedule of classes, call 209-372-1442 or 209-379-2646. The class schedule is also available in the *Yosemite Guide*. Many of the art classes are offered in accessible areas.



Accessibility Guide

Yosemite National Park

January 2015

Lower Yosemite Fall – Shuttle Stop #6

From the shuttle stop visitors can see the world's fifth tallest waterfall (the tallest in North America), one of the most sought-after views in the park. Yosemite Falls is 2,425 feet high and consists of three segments: Upper Yosemite Fall, the Middle Cascade, and Lower Yosemite Fall. No parking is available for any vehicles.



A paved loop trail, just over a mile in length, extends east and west from shuttle stop #6 to the Lower Fall, which plummets 320 feet to the rocks below. In spring, spray reaches out to the viewing area and beyond. Watch your step: the walkway and bridge may be wet.

Along the loop trail are seating areas, orientation maps, and educational exhibits. The exhibits have tactile features. A bronze relief map near the base of the western trail depicts the watershed that drains into Yosemite Falls. Huge granite boulders – some as big as a house – can be seen and touched just steps away from the paved trail leading to the base of Lower Yosemite Fall.

The eastern part of the loop (0.6 mile) is accessible to wheelchairs and crosses several braided streams before reaching the Lower Fall viewing area, which has transferable seating to granite boulders at wheelchair height. An accessible restroom is located at the trailhead near the shuttle stop.

The western trail (0.5 mile) is wide enough for several people and is mostly accessible; however, a short, steep grade near the viewing area (the last 180 feet include a slope of 13.8%) may make assistance necessary for some visitors.

Ride the free accessible shuttle buses to the Lower Yosemite Fall area (Shuttle Stop #6)

Multi-Use Paved Trails

More than 12 miles of paved, two-lane trails for bicyclists and pedestrians wind through forests and along the Merced River in Yosemite Valley. Bicycle-rental stands at Curry Village and Yosemite Lodge have bicycle trail maps. To reserve a bicycle, call 209-372-8319; additional trail maps are available at the Valley Visitor Center.

Some of these trails are accessible; however, the Superintendent's Bridge (opposite the historic Yosemite Chapel) has steps, and a section near Housekeeping Camp is steep.



Accessibility Guide

Yosemite National Park

January 2015

Happy Isles – Shuttle Stop #16

Happy Isles offers an accessible nature center (summer only) and a nature trail, access to the Merced River, a snack stand (summer only), and the trailhead for the Vernal and Nevada Falls, Half Dome, and John Muir trails.

By private vehicle: Happy Isles Loop Road, at the east end of Yosemite Valley, is closed to private vehicles, but vehicles with accessibility placards may enter. (If eligible, obtain a temporary placard at any visitor center or entrance station, and display it on the vehicle dashboard). To enter the loop, follow signs to the campgrounds and trailhead parking, then drive east beyond the “Authorized Vehicles Only” sign with emergency flashers on.

At shuttle stop #16, turn right on the paved road. Two designated parking spaces are located behind the accessible restroom, and two more are at the Nature Center at Happy Isles.

When driving on Happy Isles Road, display access placard and drive with emergency flashers on. The speed limit is 15 mph.

The Nature Center at Happy Isles (Summer Only) – Shuttle Stop #16

The Nature Center at Happy Isles, about 100 yards from the shuttle stop, is geared to children and their families and is open daily in summer. The center offers nature exhibits and interactive, tactile displays on Yosemite’s natural history.

Visitors can take a short walk out to the Happy Isles in the Merced River, listening for the roar of the river over huge boulders. During the summer, a volunteer at the nature center is available to assist with narrating the outdoor exhibits. Benches are available along the trail.

Mirror Lake (A Seasonal Lake) – Shuttle Stop #17

Mirror Lake is a seasonal lake on Tenaya Creek, in the shadow of Half Dome. Wayside exhibits explain the natural and cultural features of the area. A one-mile road, found at the drop-off location for shuttle stop #17, leads to the lake and is easy to walk due to its paved surface. The last 1,000 feet up to the lake are on a slope from 6.6 percent to 10.6 percent.

Go by vehicle: The road to Mirror Lake, at the east end of Yosemite Valley, is closed to private-vehicle traffic, but vehicles with accessibility placards may enter with parking available. (If eligible, obtain a temporary placard at any entrance station or visitor center, and display it on the vehicle dashboard).

Follow the signs to the campgrounds. At North Pines Campground, proceed past the “Authorized Vehicles Only” sign, and follow the signs to Mirror Lake or from Happy Isles, turn right onto the Happy Isles Loop Road and drive one mile. Turn right at the Mirror Lake shuttle stop (#17).



Accessibility Guide

Yosemite National Park

January 2015

Bridalveil Fall – No Shuttle Service

This spectacular, year-round waterfall (albeit a trickle in autumn) can be seen from the parking lot of the Tunnel View Lookout located on the east side of the tunnel where Wawona Road enters Yosemite Valley. This is an iconic viewing area where many visitors stop on their way into Yosemite Valley.

The parking lot for Bridalveil Fall has designated parking spaces and accessible vault toilets. A short paved trail leads to the base of the fall, but it is steep in places (14% to 24% slope) and not advisable for people using wheelchairs or walking aids.

Another viewing area is located on Southside Drive, in a sizable turnout just east of where Wawona Road merges with Southside Drive.

Northern Yosemite – Elevation 3,800 to 9,945

This area of the park includes locations along the Tioga Road, Big Oak Flat Road, and Hetch Hetchy Reservoir area.

There are a variety of picnic areas, campground facilities, and scenic overlooks as well as trailheads for entry into wilderness areas. The Tioga Road is open approximately from May or June to sometime in November. The Tioga Road is closed during the winter.



Big Oak Flat – Elevation 4,872 feet

The Big Oak Flat Information Station is open in summer. Check *Yosemite Guide* for hours of operation. The station has an accessible information desk, campground reservation desk, wilderness center, and restrooms. New accessible exhibits are located inside and on the deck.

Hetch Hetchy – Elevation 3,813 feet

O'Shaughnessy Dam, built between 1919 and 1923, impounds the Tuolumne River forming Hetch Hetchy Reservoir. In summer, the area can be extremely hot and it lacks shade. The road to Hetch Hetchy has a 25-foot restriction on vehicle length and is closed at night to all vehicles. Because of the excessive cross-slope of the main parking area, no designated accessible parking spaces are available.

An accessible restroom, with designated accessible parking is located at the backpacker's parking lot. Additionally, there is an accessible restroom, telephone, and picnic table at the staff housing picnic area on the east side of the road before it reaches the dam.



Accessibility Guide

Yosemite National Park

January 2015

Tioga Road – Elevation 6,192 to 9,945 (Generally Open from June to October)

This spectacular National Scenic Byway crosses Yosemite and the Sierra Nevada, offering several roadside exhibits at vista points. Tioga Road is closed in winter, typically from November through May or June; no access is available to Highway 395 when the Tioga Road is closed.

Accessible vault toilets are located (from west to east) at the Tuolumne Grove Trailhead parking lot, Sunrise Lakes Trailhead, Murphy Creek Picnic Area at Tenaya Lake, Tenaya Lake (east end), and Lumbert Dome Picnic Area. Accessible restroom facilities are available at the Tuolumne Meadows Visitor Center.

Merced Grove of Giant Sequoias – Elevation 6,000 feet at Trailhead

The Merced Grove is the smallest of Yosemite's three Giant Sequoia groves with approximately 20 giant sequoias. The trailhead is located 4 miles east of the Big Oak Flat entrance station or 3.8 miles west of the Crane Flat gas station on Highway 120. There are picnic tables at the trailhead, but, no restroom facilities

The hike to the grove is about 3 miles roundtrip, downhill on the way to the grove and uphill on the way back. There is a 600 foot elevation change. There is no vehicle access to the Merced Grove and the path to the grove is not accessible. See page 25 for accessible options.

Tuolumne Grove of Giant Sequoias – Elevation 6,200 feet at Trailhead

The Tuolumne Grove is a cluster of about 25 giant sequoias that can be reached from a parking area at Crane Flat, between the gas station and the NatureBridge campus. The paved path into the grove is open year-round but not plowed in winter. This path is the former route of the Big Oak Flat Road, now closed to vehicles; it has a 7.5% grade for about a mile, where the first sequoias are visible. A short distance from the parking lot is an accessible restroom. Just beyond it at the trailhead is a representation of a cross-section of a giant sequoia tree, which has transferable seating at wheelchair height and tactile features.

The hike to the grove is about 2.5 miles roundtrip, downhill on the way to the grove and uphill on the return. There is a 400 foot elevation change. There is no vehicle access to the Tuolumne Grove and the path to the grove is not accessible. See page 25 for accessible options.

White Wolf – Elevation 7,758 feet (Summer Only)

This area has lush meadows dotted with wildflowers in summer. The White Wolf Campground has accessible restroom and campsites. Planning is underway for accessibility improvement to White Wolf Lodge and cabins.

Olmsted Point – Elevation 8,400 feet (Summer through Fall)

This stunning spot overlooks Half Dome, Clouds Rest, Tenaya Lake, and the Sierra Crest. Exhibits are fully accessible.



Accessibility Guide

Yosemite National Park

January 2015

Tenaya Lake – Elevation 8,150 feet (Summer through Fall)

This large, glacier-carved lake along Tioga Road nestles among granite domes and peaks, just west of Tuolumne Meadows.

Some portions of the viewing area along the northern side of Tenaya Lake have a paved sidewalk. The access route to the Tenaya Lake Picnic Area with a view of the beach is not accessible to wheelchairs.



Tuolumne Meadows – Elevation 8,600 feet (Open June through Fall)

Subalpine meadows, the Tuolumne River, and spectacular domes and peaks dominate the landscape in this gateway to the Sierra high country. See *Yosemite Guide* for facilities and interpretive programs.

Tuolumne Meadows Visitor Center – June through October

The visitor center has an information desk, a bookstore, and exhibits about the Tuolumne Meadows area. A designated accessible parking space and entrance are available. From the main parking lot, drive up the service road to the right of the visitor center. Park in the designated space, and follow the paved path in front of the visitor center to the rear entrance. Accessible restrooms are adjacent to the main parking lot.

Southern Yosemite – Elevation 4,012 to 7,888

The southern area of Yosemite includes Glacier Point that overlooks Yosemite Valley, the Wawona area; and the Mariposa Grove of Giant Sequoias. The Mariposa Grove is the largest of the three groves of Giant Sequoias in the park and the most visited. Badger Pass Ski area, located midway on the Glacier Point Road, is open only during the winter months, generally late December through mid-March.

Glacier Point Road – Elevation 6,040 - 7,888 (Open from June to October)

Glacier Point Road offers easy access to some of the Sierra Nevada's most striking high-country views. Wildflowers abound in July. The road crosses Bridalveil Creek, the origin of Yosemite's Valley's Bridalveil Fall. Vehicles in excess of 30 feet and vehicles pulling trailers are not allowed past Sentinel Dome parking lot.

Badger Pass Ski Area – Elevation 7,245 feet (Open December through March)

California's oldest operating ski area, Badger Pass offers downhill and cross-country skiing, snow tubing, and snowshoeing. The ski area is approximately 45 minutes from Yosemite Valley. Sit-ski lessons and rentals are offered by advance reservation. Call 209-372-8430. On the first floor of the Badger Pass Lodge, the food-service area, deck, and restrooms are accessible. There are three designated parking spaces.



Accessibility Guide

Yosemite National Park

January 2015

Washburn Point – Elevation 7,591 feet (Open June through October)

This overlook, just west of Glacier Point, provides beautiful views of Half Dome and the eastern crest of the Sierra Nevada. From this vantage point, visitors can take in the “giant staircase” waterfalls – Nevada and Vernal – and also Illilouette Fall. The point is named for the Washburn brothers, who built the first road from Wawona to Yosemite Valley. Washburn Point lacks designated parking spaces and curb cuts for wheelchair access.



Glacier Point Vista – Elevation 7,214 feet (Open June through October)

This world-renowned overlook gives visitors a grand view of Yosemite Valley from above and a captivating vista of the park’s southeastern high peaks. The overlook is accessible via a 300-yard paved, switchback trail from the main parking lot. Restrooms, snack bar, and a gift shop are accessible. A bronze, three-dimensional model (on the terrace below the gift shop) identifies geologic features.

Wawona – Elevation 4,012 feet

Facilities in Wawona include a year-round gas station (attendant available during business hours) and a grocery/gift shop. A golf course, golf shop, stage rides, and stable are available seasonally.

Wawona Hotel

This beautiful complex of buildings, with a backdrop of stately trees, dates back to 1879. The Wawona Hotel, a National Historic Landmark, is the oldest Victorian style hotel in the west. A piano player offers nightly summer renditions of turn of the century songs.

Designated parking spaces are located on the north side of the Hotel behind Hill’s Studio. The hotel dining room, lobby, and restrooms are accessible. Additionally, there are two accessible guest rooms available.

Wawona Visitor Center at Hill’s Studio (May through October)

Located on the grounds north of the Wawona Hotel, Hill’s Studio was the gallery and art studio of famous 19th century landscape painter Thomas Hill. Today it serves as a visitor center with exhibits depicting life during pioneer days in Wawona. Two accessible parking spaces and a mechanical lift are available at the rear of the studio. Use the intercom located next to the lift to request assistance from staff for operation of the lift.



Accessibility Guide

Yosemite National Park

January 2015

Pioneer Yosemite History Center

The history center allows visitors to explore Yosemite's 19th century past, offering glimpses into cabins and a stable, and a chance to cross a covered bridge. Written displays about the buildings are available year-round. Stage rides and blacksmith demonstrations are offered in July and August.

Paths within the complex have a dirt surface. An accessible restroom is located near the parking lot. There is no designated parking. Parking near the Wawona Store and Pioneer Gift Shop provides the best access; the paved route includes a portion with an 8.1% slope.

Mariposa Grove of Giant Sequoias – Elevation 5,606 to 6,461 feet

Yosemite's largest stand of giant sequoias, the Mariposa Grove, also has the park's largest and most impressive individual trees, about 500 mature giant sequoias. Giant sequoias are perhaps the largest living things on Earth. There are many giant sequoias in the lower grove area for visitors to experience the splendor of these magnificent trees.

The Mariposa Grove of Giant Sequoias is currently closed for restoration. When the Grove reopens in spring 2017, access to the Grove will be by shuttle bus from the new South Entrance parking and information station or by vehicles displaying an accessible parking placard.

Mariposa Grove of Giant Sequoias – Closure Notice

The Mariposa Grove is closed, no vehicle or shuttle access is available, from July 6, 2015, until approximately spring 2017, however, foot and equestrian access is allowed along the Outer Loop Trail (12-miles with a 2,400 foot elevation change) from which a relatively small number of sequoias are visible. Visitors can access the Outer Loop Trail by foot or horseback using trails from Wawona and Fish Camp. South Entrance and the Wawona Road will remain open.

The Big Trees Tram Tour permanently ended in 2014. The Wawona-Mariposa Grove shuttle is not operating, but is planned to be replaced with a shuttle from South Entrance to the Mariposa Grove when the grove reopens.

The Restoration of Mariposa Grove

The Mariposa Grove restoration project will restore dynamic ecological processes and increase the resiliency of this treasured grove to withstand emerging stressors today and in the future. Once the project is completed, visitors to the Mariposa Grove will notice:

- A consolidated parking area and information station at South Entrance
- Many of the roads within the grove converted into hiking trails
- Over a half-mile of new accessible trails and boardwalks providing universal access for all visitors to the grove
- Flush toilets replacing vault toilets in the Grove
- Removal from the grove of commercial activities such as the gift shop and tram tours



Accessibility Guide

Yosemite National Park

January 2015

In addition to the Mariposa Grove, Yosemite has two other groves of giant sequoias. Located on Highway 120 are the Merced Grove and the Tuolumne Grove. For information on the Merced Grove of Giant Sequoias and the Tuolumne Grove of Giant Sequoias see page 21. There is no accessible path of travel to the Merced Grove or the Tuolumne Grove.

Giant Sequoia Groves Outside of Yosemite

To the south of Yosemite, **Sequoia Kings Canyon National Park** has several groves of giant sequoias for you to visit. The General Sherman Tree, the largest tree in the world; the Giant Forest; and Grant Grove are all located in Sequoia Kings Canyon. The Giant Forest Museum provides visitors the opportunity to learn the story of the giant sequoias. The paved Big Trees Trail is accessible. For more information on accessibility in Sequoia Kings Canyon and the giant sequoias go to www.nps.gov/seki/planyourvisit/accessibility.htm or contact them by email at seki_interpretation@nps.gov.

To the north of Yosemite, **Calaveras Big Trees State Park** has the North Grove of giant sequoias and offers accessible camping, picnicking and trails. The Park offers accessible trails to view the giant sequoias, a visitor center, and numerous interpretive programs. For more information on accessibility in Calaveras Big Trees State Park go to www.parks.ca.gov/?page_id=551 or contact them at 209-795-2334.



Questions or Suggestions?

For comments, questions or suggestions about accessibility in Yosemite, contact the accessibility coordinator by phone at 209-379-1035, by email to yose_accessibility@nps.gov, or by mail c/o the National Park Service, P.O. Box 700-W, El Portal, CA 95318.

For more information regarding accessibility and the National Park Service, check online at www.nps.gov/accessibility.htm. For concerns or complaints regarding accessibility, write to: EEO Program Manager, U.S. Department of Interior, National Park Service, 1849 C St., NW, org code 0008, Washington, DC 20240.

