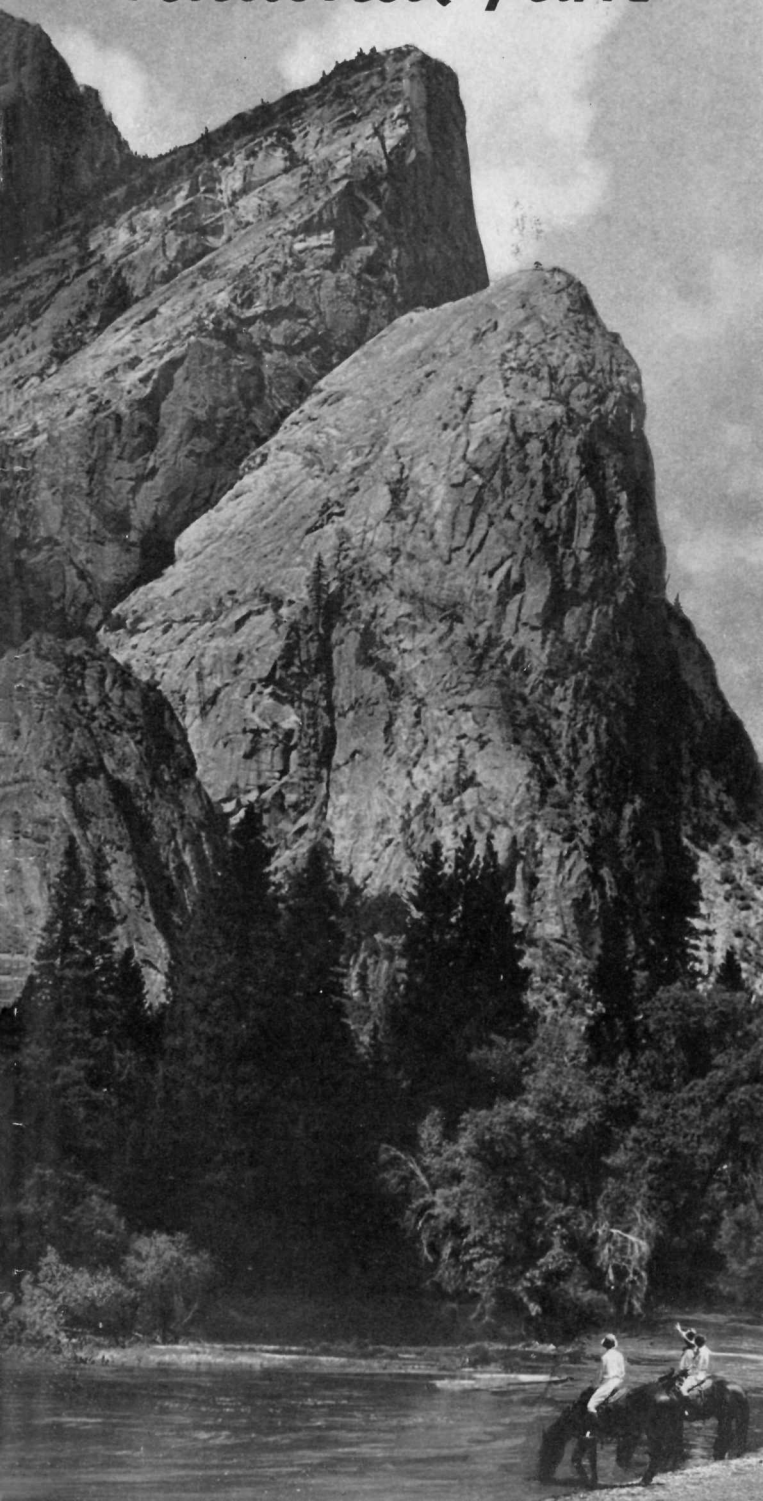


YOSEMITE

National Park



PLAN YOUR VISIT AROUND ONE OF THESE ALL-EXPENSE TOURS

These tours were carefully planned to cover the most ground in the least possible time and at least expense. Many additional days can be profitably and pleasantly spent in Yosemite Valley enjoying the various short trips and outdoor activities. The cost of additional days in Yosemite, on any of these tours, can readily be computed by adding the hotel rates for the extra days (see page 7).

TOUR No. 1—TWO DAYS—Operated October 1 to April 30. Merced to Yosemite Valley and return, with side trip to the Mariposa Grove of Big Trees, Tour of Floor of Yosemite Valley and overnight in Yosemite Valley. Rates: Without bath, at Yosemite Lodge, \$25.00. With bath, at The Ahwahnee, \$29.50.

TOUR No. 2—TWO DAYS—Operated May 1 to October 1. Merced to Yosemite Valley and Mariposa Grove of Big Trees, returning to Fresno or in reverse direction. Includes Tour of Yosemite Valley, one night in Yosemite Valley and complete tour of Mariposa Grove of Big Trees. Rates: Without bath, at Camp Curry, \$25.00. With bath, at The Ahwahnee, \$29.50.

TOUR No. 3—THREE DAYS—Operated June 1 to October 1. Merced to Yosemite Valley, Glacier Point and the Mariposa Grove of Big Trees, returning to Fresno, or in reverse direction. Includes Tour of Yosemite Valley, Mirror Lake Sunrise Trip, overnight in Yosemite Valley, trip to Glacier Point with overnight stay, and complete tour of Mariposa Grove of Big Trees. Rates: Without bath at Camp Curry and Glacier Point Hotel, \$35.00. With bath, at The Ahwahnee and at Glacier Point Hotel, \$41.00.

TOUR No. 4—FOUR DAYS—Operated June 1 to September 1. Merced to Yosemite Valley, Hetch Hetchy, Glacier Point and the Mariposa Grove of Big Trees returning to Fresno, or in reverse direction. Includes Tour of Yosemite Valley, Mirror Lake Sunrise Trip, Hetch Hetchy, two nights in Yosemite Valley, trip to Glacier Point with overnight stay, and complete Tour of Mariposa Grove of Big Trees. Rates: Without bath, at Camp Curry and Glacier Point Hotel, \$45.50. With bath, at The Ahwahnee and at Glacier Point Hotel, \$56.00.

TOUR No. 5—FOUR DAYS—Operated northbound July 2 to August 30, and southbound July 6 to September 3. Fresno to Yosemite Valley, via Mariposa Grove of Big Trees and Glacier Point, and Yosemite Valley to Lake Tahoe over Tioga Pass Route, or in the reverse direction. This tour includes overnight stop at Glacier Point, Yosemite Valley and Tuolumne Meadows. The special feature of the trip is the outstanding mountain scenery included in trip from Yosemite Valley to Lake Tahoe over the Tioga Pass Route, crossing the Sierra Nevada at an elevation of 9,941 feet. Rates: Without bath, at Camp Curry and Glacier Point Hotel, \$58.00. With bath, at The Ahwahnee and Glacier Point Hotel, \$62.50. Overnight stop at Tuolumne Meadows Lodge without bath.

SIX-DAY SADDLE TRIP in High Sierra makes circuit of the five Yosemite High Sierra Camps. Leaves Yosemite Valley every Monday morning, approximately July and August. Rate, \$49.50 per person, includes saddle animal, meals and dormitory lodging at camps and free guide service. For party of five or more the trip leaves any morning during the season.

TIOGA PASS DETOUR: One of the most scenic mountain trips in America across the crest of the Sierra Nevada from Yosemite to Lake Tahoe or reverse. \$25.00 one way; \$40.00 round-trip.

SIDE TRIPS FROM YOSEMITE VALLEY:

TOUR OF FLOOR OF YOSEMITE VALLEY: A 2-hour, 20-mile automobile drive to points of interest, in open top cars—daily all year..... \$2.00

GLACIER POINT AND RETURN: A half-day trip to Glacier Point Hotel on the rim of the Valley, 3,254 feet above the floor of Yosemite Valley, in open top cars, operated approximately June 1 to September 30.....\$5.00

MARIPOSA GROVE OF BIG TREES AND RETURN: Operated daily all year. This trip includes a complete tour of the Grove, in open top cars.....\$7.50

MARIPOSA GROVE OF BIG TREES AND GLACIER POINT AND RETURN: Operated approximately June 1 to September 30—a day and a half trip in open top cars, with overnight stay at Glacier Point Hotel. Transportation only.....\$11.00

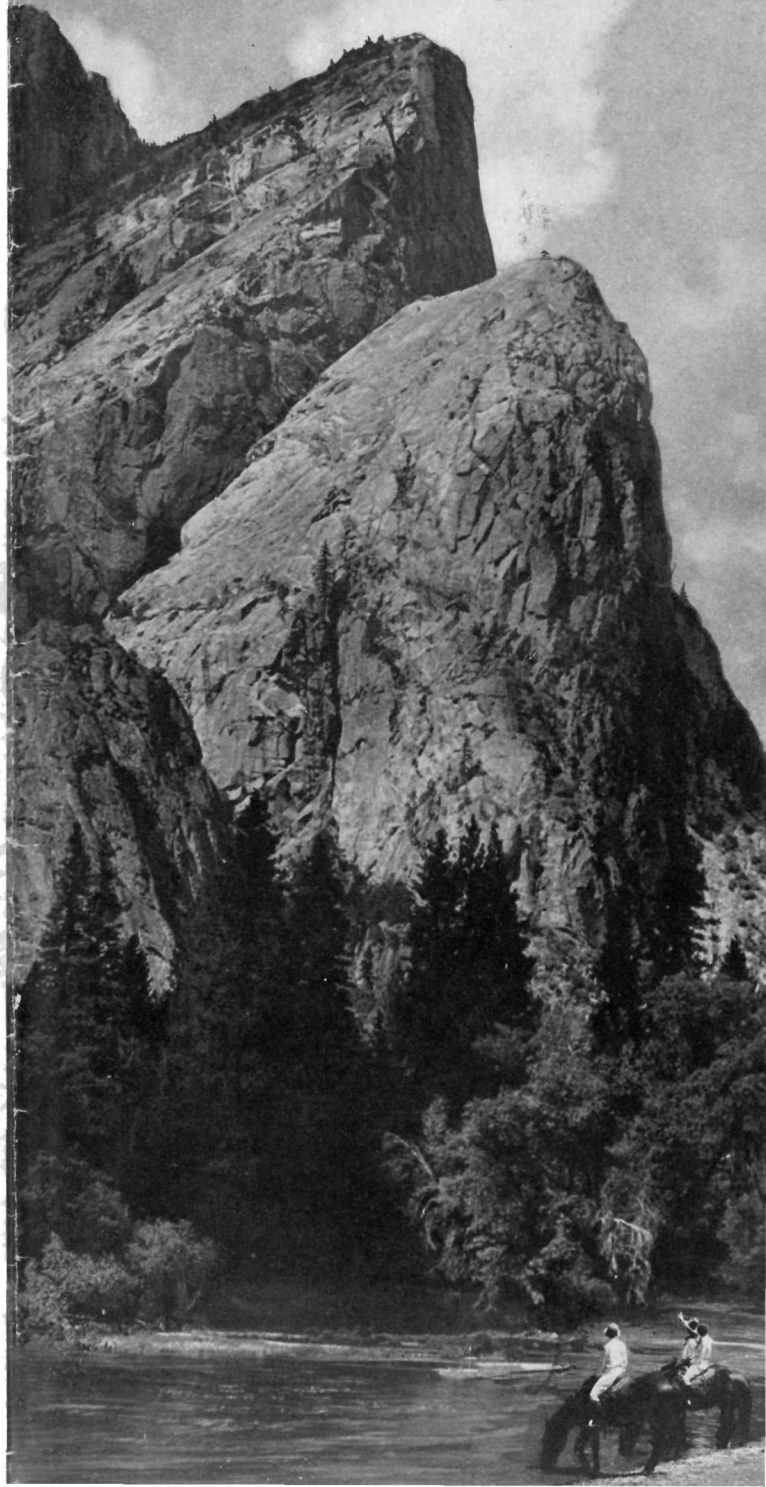
HETCH HETCHY AND RETURN: Operated daily, June 1 to September 1. A one-day trip to San Francisco's gigantic water supply project in the scenic Tuolumne River Gorge. Open top cars. Fare.....\$7.50

HOW TO REACH YOSEMITE NATIONAL PARK—

Yosemite National Park is 200 miles due east of San Francisco, in the heart of the Sierra Nevada mountains. It is conveniently reached every day in the year by rail, motor stage or private automobile. Your local Travel or Ticket Agent can arrange all details, or write any of our offices (see page 7).

FARES:	One-Way	Round-Trip
Merced to Yosemite Valley	\$ 7.25	\$10.25
Merced to Yosemite Valley and return to Fresno including Mariposa Grove of Big Trees, or reverse		17.25
Same, as above, plus Glacier Point side trip		20.75
Fresno to Yosemite Valley via Mariposa Big Trees.....	11.25	15.25
Fresno to Yosemite Valley via Mariposa Big Trees and return to Merced, or reverse		17.25
Same, as above, plus Glacier Point side trip	14.75	18.75

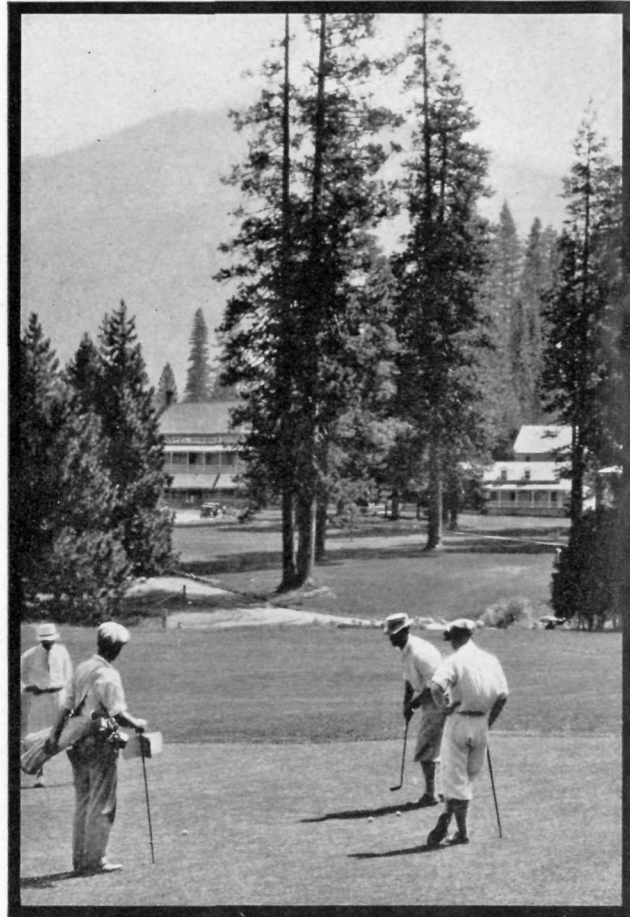
YOSEMITE *National Park*



IN THIS PLAYLAND...ENDLESS PASTIMES



Informal entertainment at a barbecue



Nine-hole championship course at Wawona

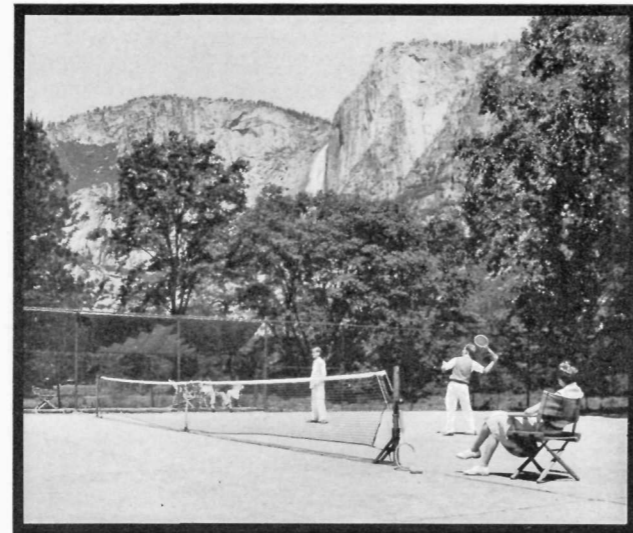
SPRING SUMMER

Waterfalls; wild flowers; museum; fish hatchery; firefall; riding; hiking; tennis; dancing; nature study trips; motion pictures; photography; wild life; motor tours; big trees; fishing; botany; geology; ski tours; golf.

Fishing; camping; pack trips; swimming; horseback breakfasts; glaciers; firefall; High Sierra trips; wild flowers; wild life; campfire entertainment; riding; hiking; nature study trips; museum; picnics; golf; trail trips; dancing; tennis.



Yosemite's open-air, filtered pool



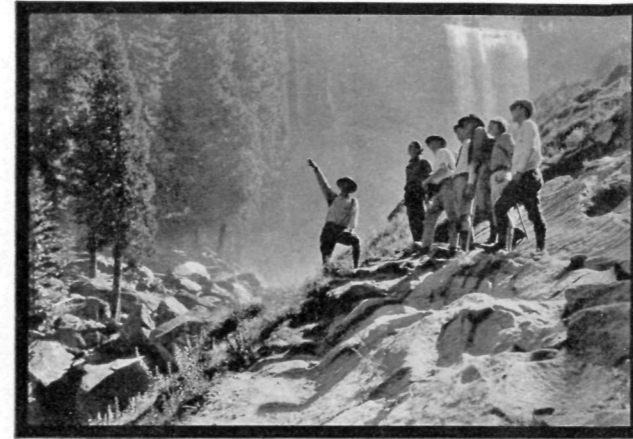
Tennis is one of the popular pastimes

THAT VARY WITH THE SEASONS

AUTUMN WINTER

Fall coloring; pack trips; fishing; riding; museum; trail trips; motor picnics; moonlight rides; golf; big trees; motor tours; tennis; firefall; dancing; wild life; camping; fish hatchery; campfire entertainment.

Ski-ing; skating; tobogganing; ice hockey; curling; fancy costume skating carnivals; ski-joring; sleigh and dog team rides; speed skating; ski lodges; ice skating gymkhana; snowshoeing; dancing; figure skating; museum; Hoover Cup Games.



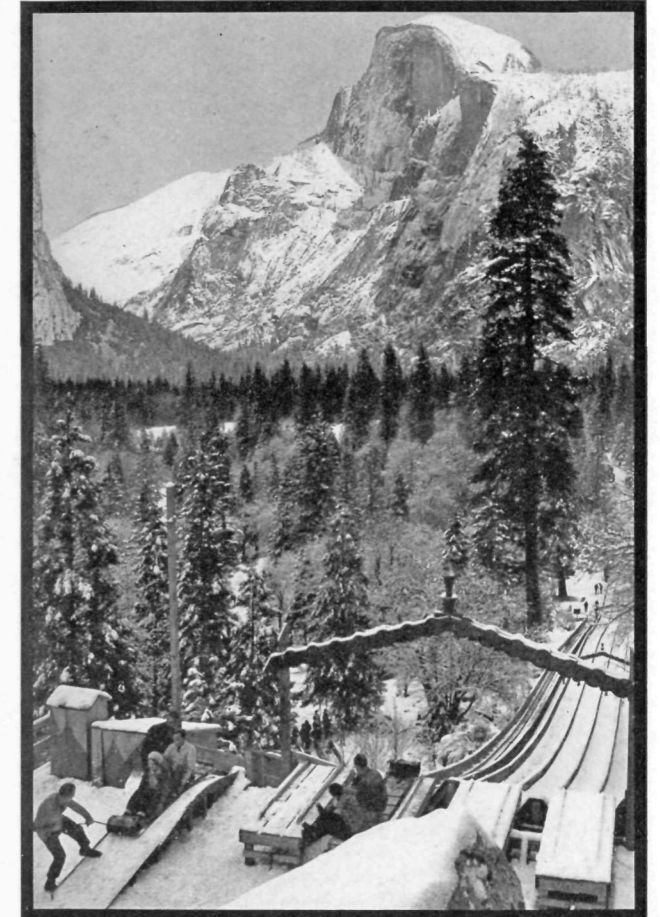
Hiking trips with a Ranger-Naturalist



Breakfasts are cooked out-of-doors



Twenty-five miles of oiled bridle paths



Ask for Winter Sports folder

MAP SHOWING Y.T.S. STAGE ROUTES, HIGH SIERRA CAMPS, PACK TRIP AND SKI-ING COUNTRY



San Francisco via Merced (All-Year Highway).....203 miles

San Francisco via Big Oak Flat Road (June to November).....188 miles

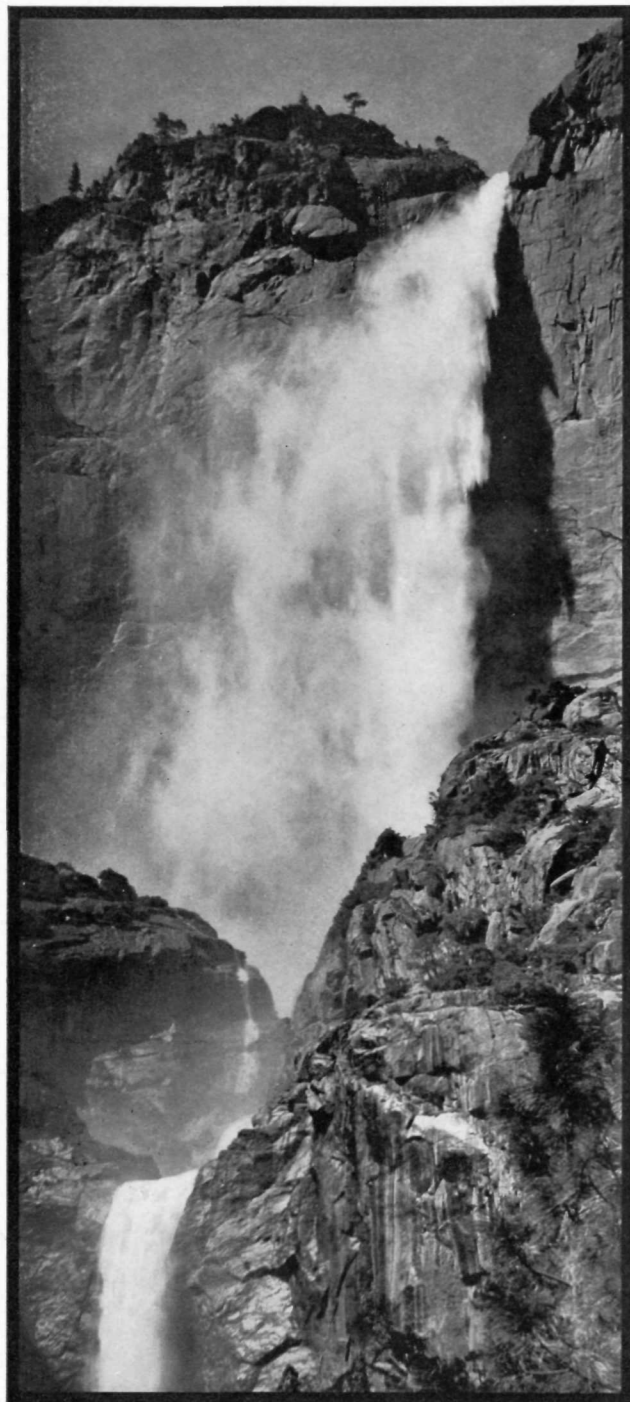
San Francisco via Merced and Mariposa Big Trees234 miles

Los Angeles via Ridge Route and Merced (All-Year Highway).....358 miles

Los Angeles via Ridge Route, Fresno or Madera and Wawona329 miles

Los Angeles via Owens Valley, Mono Lake and Tioga Pass (July to September).....452 miles

BIG TREES NOW ACCESSIBLE ALL YEAR

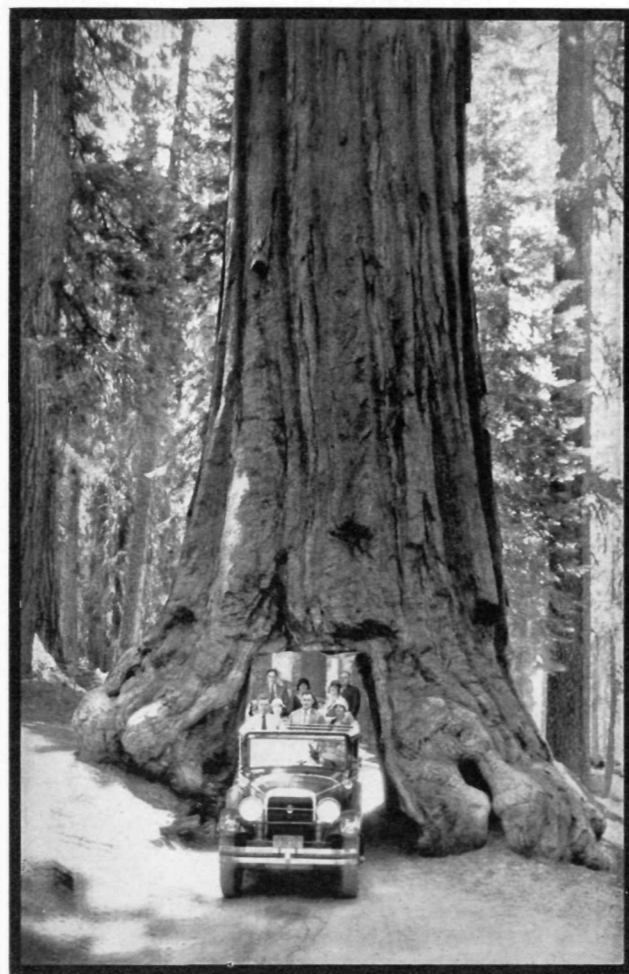


Yosemite Falls drops 2,565 feet to the Valley floor

The Mariposa Grove of Big Trees

No California itinerary is ever considered complete unless it includes the world-famous Mariposa Grove of Big Trees in Yosemite National Park. Here are some 600 monarchs of the forest, several thousand years of age, and so huge that the roadway was tunneled through one of them—the famous Wawona Tree. Yosemite motor stages make the trip to the Grove on your way to or from Yosemite in summer or daily on the one-day side-trip from Yosemite Valley all year. An overnight stop at Glacier Point Hotel on the rim of the Valley may be made in connection with either trip in season.

Elevation of the Mariposa Grove is 6,000-7,000 feet.



Yosemite coaches drive through the living trunk of the Wawona Tree

ACCOMMODATIONS AND RATES

(ALL RATES SUBJECT TO CHANGE WITHOUT NOTICE)

THE AHWAHNEE: Open all year. American Plan only. One of the world's distinctive resort hotels. All rooms have private bath. Attractive cottages on The Ahwahnee grounds are operated in connection. Rates per person including meals:

	Daily		Weekly	
One person in room.....	\$12.00	\$14.00	\$72.00	\$84.00
Two persons in room, each.....	10.00	12.00	60.00	72.00
Private Parlor	9.00	10.00	54.00	60.00

Transient Meal Rates:

Breakfast \$1.00, Luncheon \$1.50, Dinner \$2.00, Box Luncheon \$1.50.

YOSEMITE LODGE: European Plan. Fall and Winter Season, September 10 to May 16, approximately. (May 17 to September 9, lodgings only are available, rented from Camp Curry.) Yosemite Lodge is a colony of redwood and canvas cabins located near the foot of Yosemite Falls. Central buildings include lounge, cafeteria, soda fountain and writing room.

Rates (meals not included) (meals in cafeteria):

	Daily		Weekly	
Redwood cabin with bath and sleeping porch	Each Person			
Two persons in room	\$4.00	\$24.50		
Three persons in room	3.50	21.00		
Four persons in room	3.00	17.85		

Redwood cabin with bath (no sleeping porch):

One person in room	5.00	29.75
Two persons in room	3.50	21.00
Three persons in room	3.00	17.85

Redwood cabin without bath:

One person in room	3.25	19.25
Two persons in room	2.25	14.00
Three or four persons in room	1.75	10.50

Canvas Cabin without bath (summer season only):

One person in room	2.50	15.05
Two persons in room	1.50	8.75

BIG TREES LODGE: Open May 1 to September 30. European Plan. Located in the heart of the Mariposa Grove of Big Trees, on the Wawona Road, 35 miles from Yosemite Valley. Elevation 6,000 feet. Big Trees Lodge is a new building of unusual charm and comfort containing lounge, cafeteria, dining room, studio and bedrooms.

Rates: European Plan (meals not included):

	Daily		Weekly	
Room with bath:	Per Person			
One person in room	\$5.00	\$29.75		
Two or more persons in room	3.50	21.00		

Rooms without bath:

One person in room	3.50	21.00
Two or more persons in room	2.50	15.05

GLACIER POINT HOTEL: European Plan. Open approximately June 10 to September 1. Located 3,214 feet above and overlooking Yosemite Valley.

Rates: European Plan (meals in cafeteria not included):

	Daily		Weekly	
Room with bath:	Per Person			
One person in room	\$5.00	\$29.75		
Two or more persons in room	3.50	21.00		

Room without bath, with running water:

One person in room	3.50	21.00
Two or more persons in room	2.50	15.05

Room without bath, in Annex:

One person in room	3.00	17.85
Two or more persons in room	2.00	12.25

(Prior to opening of hotel, the Mountain House will offer lodging without bath at \$2.00 to \$3.00, and meals, family style, \$1.00 each.)

HOUSEKEEPING accommodations, in cabins in winter and in tents in summer, are available on the floor of Yosemite Valley. The weekly rates for complete outfits, for two persons, are from \$11.50 in summer to \$18.00 in winter. Supplies may be purchased at the General Store. Ask for detailed information and rates.

CAMP CURRY: Open approximately May 16 to September 10.

American and European Plan. Accommodations are in wooden cabins and without bath, and tents. Central buildings include dining room, cafeteria, swimming pool, children's playground, soda fountain, photographic studio and curio shop, grocery and meat market, service garage, etc. Campfire entertainment each evening. Dancing each evening except Sunday. Rates:

AMERICAN PLAN (including meals):

	Daily		Weekly	
Bungalow with bath:	Each Person			
One person in room	\$8.00	\$47.95		
Two or more persons in room	6.50	38.50		

Cabin without bath:

One person in room	6.00	35.00
Two or more persons in room	5.00	29.75

Tent:

One person in tent	5.00	29.75
Two or more persons in tent	4.00	24.50

EUROPEAN PLAN (meals not included):

	Daily		Weekly	
Tent:	Each Person			
One person in tent	\$2.50	\$15.05		
Two or more persons in tent	1.50	8.75		

Transient Meal Rates:

Breakfast \$1.00, Luncheon \$1.00, Dinner \$1.50, Box Luncheon \$1.00.

WAWONA HOTEL: American and European Plan. Open June 6 to August 26. Elevation 4,000 feet. Wawona Hotel is located on the Wawona Road, 27 miles from Yosemite Valley, and is headquarters for pack trips. It also offers golf, tennis, swimming, and stream and lake fishing.

Rates: American Plan (including meals):

	Daily		Weekly	
Room with bath:	Per Person			
One person in room	\$8.00, \$9.00	\$47.95, \$53.90		
Two or more persons in room	6.00, 7.00	35.00, 42.00		

Room without bath:

One person in room	6.00	35.00
Two or more persons in room	5.00	29.75

European Plan (not including meals):

Room with bath:	Per Person			
One person in room	5.00	29.75		
Two or more persons in room	3.50	21.00		

Room without bath:

One person in room	2.50, 3.00	15.05, 17.85
Two or more persons in room	1.50, 2.00	8.75, 12.25

Transient meal rates:

Breakfast \$0.75, Lunch \$1.00, Dinner \$1.25.

TUOLUMNE MEADOWS LODGE: Open July 1 to September 5. American Plan and Housekeeping. Located on Tioga Road, 68 miles from Yosemite Valley, in the center of the Yosemite High Sierra. Elevation 8,600 feet. Accommodations are in canvas cabins heated by wood stoves, while a large central tent contains lounge and dining room. Hot and cold shower baths are available.

Rates: American Plan (including meals):

	Daily		Weekly	
Canvas cabin without bath:	Per Person			
One person in cabin	\$6.00	\$35.00		
Two persons in cabin	5.00	29.75		

Transient meal rates:

Breakfast \$1.00, Luncheon \$1.00, Dinner \$1.00, Box Luncheon \$1.00. Partially furnished housekeeping cabins also available.

HIGH SIERRA CAMPS, providing plain but comfortable accommodations at trail and fishing centers in the mountain country above Yosemite Valley, enable one to travel unencumbered except by camera, fishing rod and personal necessities. The Camps are an easy day's ride or hike apart. Rates are \$1.00 a meal and \$1.00 a night in dormitory tents. See High Sierra folder.

CHILDREN'S RATES: Under 3, no charge. 3 to 10, inclusive, half rate. 11 and over, full rate.

HIGH SIERRA CAMPS AND HOUSEKEEPING, FULL RATE.

FOR FURTHER INFORMATION OR RESERVATIONS APPLY TO:

YOSEMITE PARK AND CURRY CO.

LOS ANGELES, CALIF.
608 South Olive St.
Telephone VAndike 5022

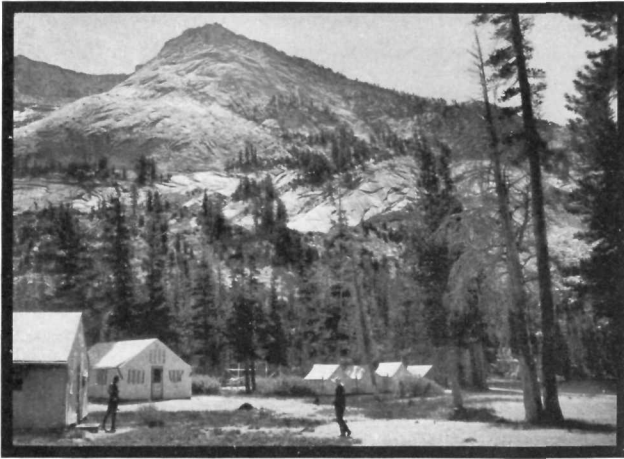
SAN FRANCISCO, CALIF.
39 Geary Street
Telephone EXbrook 3906

GENERAL OFFICES
Yosemite National Park, Calif.



MRS. D. A. CURRY
Yosemite's "hospitality guardian" since 1899

1,100 SQUARE MILES OF PLAYLAND



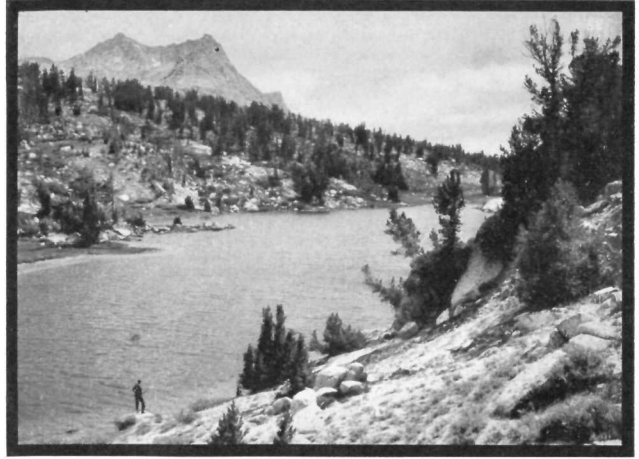
HIGH SIERRA CAMPS

For those who wish to enjoy a Yosemite High Sierra vacation at minimum expense, unencumbered by anything more than camera, fishing rod and personal necessities, Yosemite High Sierra Camps, an average of ten miles apart, located at altitudes ranging from six to ten thousand feet, are operated from late June to the end of August. Plain but comfortable camp-style accommodations are provided at \$1 a meal and \$1 a night.



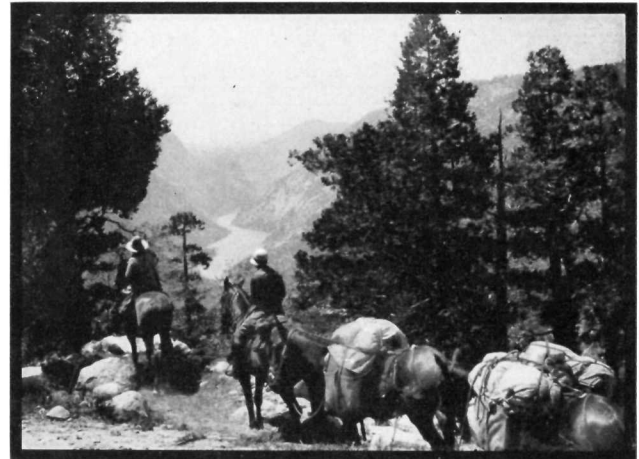
UNEXCELLED SKI-ING

An hour or less from Yosemite Valley are limitless varied ski fields which many ski-ing authorities have pronounced unexcelled by the best runs in Europe. From December to April this region lies buried under several feet of snow. High above the Valley rim ski lodges a day's run apart provide comfortable accommodations for ski-ing parties or overnight stops on ski tours. Swiss ski guides and experienced camp cooks are available. Ask for Winter Sports folder.



TROUT FISHING

There are 300 lakes scattered throughout the Yosemite region, and countless excellent fishing streams in this vast mountain area. A State Fish Hatchery in Yosemite Valley keeps these waters well stocked with gamey trout, of which the more important varieties are Eastern Brook, Rainbow, Shasta, German Brown, Loch Leven, Steelhead and Golden. Fishing licenses may be procured and tackle rented or purchased in Yosemite.



CAMPING TRIPS

Few, if any, vacation experiences can compare with an independent camping trip through the more inaccessible, rarely-visited sections of Yosemite National Park, equipped with everything needful to camp where and when one chooses. Guides, packers, cooks, saddle and pack animals and a complete outfit for a trip of any duration may be obtained in Yosemite. Ask for itineraries and rates, specifying how many in your party.