

YOSEMITE GUIDE

YOSEMITE NATIONAL PARK, CALIFORNIA



Volume XII, No. 5

August 1 - September 5, 1983



Tioga Pass Entrance Station, 1923. As the story below relates, 190 cars entered the park through this entrance station in 1916, the year it opened. In 1982, 439,262 people in 151,470 vehicles were checked through. At an elevation of 9945 feet, Tioga is the highest pass across the Sierra.

NPS PHOTO

VAN TREKS

A New Yosemite Experience

Visitors who want to see more of the park and learn more about its natural history are encouraged to participate in the new Van Treks program. Transportation is provided to the study areas in a comfortable, air-conditioned van.

There are five trips, each a day long, led by naturalist Suzanne Swedo. Ms. Swedo has conducted several field seminars in the park and is highly knowledgeable about the subjects covered.

GEOLOGY OF YOSEMITE — Wednesday

Mountain building, formation of granite cliffs, domes, and glaciers. Begin in Yosemite Valley, picnic atop Sentinel Dome (2.2-mile hike) for spectacular views. Return to Valley 5 p.m. \$16.

PLANT AND ANIMAL COMMUNITIES OF YOSEMITE — Thursday

Identify plants and animals, study their behavior and interrelationships from 4,000 to 10,000 feet. Yosemite Valley, Tioga Pass and stops en route. Return to Valley 6 p.m. \$20.

WILDFLOWERS OF YOSEMITE VALLEY AND GLACIER POINT — Friday

Learn where to find and how to identify many of Yosemite's most beautiful wildflowers. Yosemite Valley to Glacier Point and stops en route. Return to Valley 5 p.m. \$16.

continued on page 2

Tioga Road — 100 Years Old

by Richard Ewart

"A thundering big ledge of silver lies up on Tioga Hill . . . estimates place its value at \$12.5 million." (1883).

In 1883, the Great Sierra Consolidated Silver Company, began a large-scale mining operation near Tioga Pass. Getting supplies and equipment to this remote mountain site was a formidable task.

Mules and men hauled the first 16 tons up the steep and dangerous eastern side to Bennettville, the new mining town. This resulted in near disaster, and the decision was made to build a road that would follow much of the original Mono Trail, the footpath the Indians used to cross the Sierra for many centuries.

Work on the 56-mile road began on April 27, 1883. Work progressed rapidly, and by September 4, the road was completed to the mine at a cost of \$61,000.

Ironically, the Great Sierra Consolidated Silver Company never struck paydirt and was forced into bankruptcy. Ownership then changed hands several times and, for all intent and purpose, the road was abandoned.

In 1908 the State of California completed the road down Lee Vining Canyon. In 1915 the Sierra Club together with Stephen Mather, first Director of the National Park Service, bought the road for \$15,500, and donated it to the Federal government.

In the first year of public use, 190 cars entered at Tioga Pass; the entrance fee in 1916 was \$5 per vehicle. The speed limit was 20 mph for straightaways, 8 mph uphill, and 12 mph downhill.

continued on page 2

Handle Yosemite With Care

Yosemite is a special place to many people. Help keep it that way — and insure your own safety — by observing some simple Park rules.

✔ Park animals are wild! Feeding them may be hazardous to their health — and perhaps to yours. Enjoy them from a safe distance, and leave them to find their own natural foods. Be sure to secure yours properly.

✔ Pets frighten wildlife and disturb hikers. They must be leashed at all times and are not permitted on Park trails.

✔ Backcountry use is limited and wilderness permits are required for all overnight backpacking trips.

✔ Yosemite presents many hazards to the unwary. Some activities, such as rock scrambling, look adventurous but can result in tragedy. Use common sense!

✔ Stay on trails. Getting off trails is not only unsafe, but also damages fragile plants and creates unsightly paths.

✔ Collecting specimens of any kind or defacing Park features, deprives other visitors. Please leave everything as you found it for others to enjoy. If you must collect something, pick up some litter!

✔ Please help keep Yosemite beautiful by using garbage cans. Remember: cigarette butts are litter, too.

✔ Motor vehicles must stay on established roads open to public travel; off-road vehicles are not permitted.

✔ Keep bicycles on roads and paved paths unless posted otherwise. Ride only in the established traffic direction on one-way roads, not against it.

Van Treks continued from page 1

YOSEMITE'S MEADOWS — Saturday

Explore three different meadow ecosystems at three different Yosemite elevations. Yosemite Valley, Crane Flat, Tuolumne Meadows. Return to Valley 6 p.m. \$20.

WILDFLOWERS OF YOSEMITE VALLEY AND TUOLUMNE MEADOWS — Sunday

Learn where to find and how to identify many of Yosemite's most beautiful wildflowers. Yosemite Valley to Tuolumne Meadows and en route. Return to Valley 6 p.m. \$20.

PLEASE NOTE: As Van Treks operate for a minimum number of participants, the program may not run as scheduled. Please check at Valley Visitor Center: 372-4461, ext. 333 to learn status of trips. Thank you.

✔ Keep your own impact on the Park to a minimum, and respect the rights and privacy of others.

✔ Camping is permitted only in designated campgrounds. Staying overnight on roadsides or in parking areas is not permitted. You must register for campsites in accordance with the instructions posted at campground entrances. There are camping fees and limits on length of stay.

Danger!

Park streams may still be unusually high, swift, powerful and **cold** late this summer after record snowfall in the Sierra last winter. Rocks in or near the water are slippery and treacherous. Most water-related accidents, many of them fatal, result from failure to exercise caution or to appreciate the dangers of fast-moving streams. Children are especially attracted to water; be sure to supervise them closely to avoid tragedy.

Store Food Out of Bears' Reach

Although in Yosemite the bears are most often a shade of brown, the correct name for the species is the *American black bear*.

Bears are normally fairly shy and timid animals. However, in places where campers' food is habitually left accessible, black bears become bold marauders.

Bears who become habituated to human foods may become sufficiently aggressive that they must be destroyed.

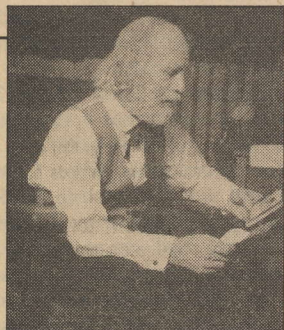
✔ Store all food and food containers covered and out of sight in your vehicle with all windows and vents closed.

✔ Deposit all garbage in refuse containers. ✔ Please don't store food inside of your tent, or leave it in the open.

✔ Backpackers: please suspend foodstuffs from a tree fifteen feet above the ground, and ten feet out from the trunk. ✔ Don't try to retrieve food taken by a bear.

Tioga Road continued from page 1

The single-lane dirt road remained until 1937, when it was realigned and paved from Tioga Pass to the west end of Tuolumne Meadows. In 1939 a new section was built between Crane Flat and White Wolf. However, the 21-mile stretch between Tuolumne Meadows and White Wolf remained unimproved until 1961, when it was realigned and paved.



JC JOHNSON PHOTO

Conversation With a Tramp... An Evening with John Muir

Since its opening in April, visitors have filled the East Auditorium for Lee Stetson's portrayal of John Muir in his one-man performance of *Conversation With a Tramp*. This

one-man show is the creation of professional actor/director Lee Stetson, and is drawn from Muir's books, articles and unpublished journals. It depicts Muir as a fiesty old man in the midst of his last great environmental battle — a struggle to preserve intact

the Yosemite National Park he had helped to create.

Presented largely in his own words, audiences are delighted by Muir's unbridled enthusiasm for the entire universe, his rage toward the exploiters of his beloved forests, and his living warmth and sense of humor.

Conversation With a Tramp is presented Wednesday through Saturday evenings at 8 p.m. in the Visitor Center Auditorium. Tickets are \$3.00 for adults, \$1.50 for children and senior citizens and may be purchased in advanced at the Visitor Center from 9 a.m. to 6 p.m. daily and at the door prior to each performance, but are limited to available seats.

YOSEMITE VALLEY VISITOR ACTIVITIES

This schedule of visitor activities covers the period of August 1 through September 5, 1983

DAILY ACTIVITIES

Special activities not listed in the *Yosemite Guide* are posted and announced in the Visitor Center.



Programs with two stars (★★) are suitable for visitors in wheelchairs, with assistance, as well as the able-bodied. Printed information on park

programs, facilities, and trails is available at entrance and information stations.

Programs with two checks (✓✓) will have a sign language interpreter present.

8:00 a.m. to 7:00 p.m. VALLEY VISITOR CENTER. Information, maps, exhibits, wilderness permits, climbing and backcountry registration. Park publications, and a self-help area to aid in trip-planning.

SELF-HELP INFORMATION STATION at front of Visitor Center for after-hours information on sightseeing, Ranger programs, accommodations, weather and road conditions.

8:00 a.m. to 4:30 p.m. THE VILLAGE OF THE AHWAHNEE. Come to the Indian Village to see and participate in the traditional skills of the Miwok and Paiute people of Yosemite. Located directly behind the Visitor Center.

9:00 a.m. to 4:30 p.m. INDIAN CULTURAL MUSEUM displays the cultural history of the native Miwok and Paiute people from 1850 to the present day. Located next to the Visitor Center.

SELF-GUIDING TRAIL THROUGH THE INDIAN VILLAGE OF AHWAHNEE. Take a short stroll and investigate the reconstructed Miwok/Paiute Village located behind the Visitor Center.

★★ **10:00 a.m. A FIRST LOOK AT YOSEMITE.** Discover Yosemite's beauty through its natural and human histories and ever-changing scenery. 1½ hours, easy walk. Meet Ranger at Visitor Center.

10:00 a.m. to 4:00 p.m. HAPPY ISLES NATURE CENTER. Explore the world of nature at Happy Isles. Exhibits, children's corner, information and books are available. Ride the free Valley Shuttlebus, or walk fifteen minutes from Curry Village.

11:00 a.m. to 5:00 p.m. LECONTE MEMORIAL. The Sierra Club invites park visitors to this picturesque building, which houses environmental displays, a library and teaching aids. Located at Curry Housekeeping Shuttlebus stop.

★★ **2:00 p.m. ME-WU STROLL.** Join a Me-Wu (Indian person) interpreter for a 45-minute stroll. Meet behind the Visitor Center at the entrance to the Indian Village.

A CHANGING YOSEMITE: SELF-GUIDING NATURE TRAIL begins near the Visitor Center Shuttle Bus Stop, and is about one mile long. It is accessible to hikers as well as visitors in wheelchairs. Trail pamphlets may be picked up at the trailhead sign, or at the Visitor Center.

Activities offered by the Yosemite Park and Curry Co.

HORSEBACK RIDING: No experience is necessary. Reservations at Stables or Tour Center at your hotel unit. Stables at Wawona (372-1319), White Wolf (372-1323), Tuolumne

Meadows (372-1327) and Yosemite Valley (372-1248).

ROCK CLIMBING: Beginning, Intermediate and Advanced classes available. Class meets at 8:30 a.m. The Mountaineering School at Tuolumne Meadows. Phone 372-1335.

BICYCLE RENTALS: Bicycles rented by the hour at Curry Village or Yosemite Lodge. Open daily 9:00 a.m. to 5:00 p.m. 372-1200 Curry Village; 372-1208 Yosemite Lodge.

RAFT RENTALS: Rafts available at Curry Village, 9:00 a.m. to 4:00 p.m. Includes raft, paddles, life jacket and ride back to Curry Village. Phone 372-1441.

SPECIAL ACTIVITIES

MONDAY

★★ **8:00 a.m. YOSEMITE IS FOR THE BIRDS.** Wake up with the birds and share the morning with them and Ranger Marla LaCass. Binoculars helpful. 2 hours, easy walk. Meet at Visitor Center.

★★ **10:00 a.m. A FIRST LOOK AT YOSEMITE.** See description in *Daily Activities* section. 1½-hour walk. Meet at Visitor Center.

2:00 p.m. UP A CREEK. Wear wading shoes and come explore the rich life story in Tenaya Creek. Two hours, moderate walk and wade. Meet Ranger Michael Nachman at the Mirror Lake Road Junction Shuttlebus Stop.

2:00 p.m. FAMILY ECOLOGY WALK (except August 15). Enjoy and learn as a family in the forests of Yosemite. 1½ hours, easy walk. Meet Ranger Bob Clarillos at Happy Isles Shuttlebus Stop.

2:00 p.m. MINIMUM IMPACT BACKPACKING. An introduction to planning a successful and ecological trip in the wilderness. One hour, LeConte Memorial.

★★ **2:30 p.m. THE FIRST PEOPLE.** Come learn of the life and times of the Ahwahneechee people. Two hours, easy walk. Meet Ranger Fermin Salas at the Visitor Center.

★★ **7:00 p.m. EVENING STROLL.** A pleasant walk in the cool of a Yosemite evening. 45 minutes. Meet Ranger Michael Nachman at the Yosemite Lodge Amphitheater.

8:00 p.m. YOSEMITE'S GRAVE HISTORY. Come explore Yosemite's past and it's colorful characters IN THE DARK! One and one-half hours, easy walk. For details and reservations call 372-4461 from 8:00 a.m. to 7:00 p.m., and ask for Visitor Center.

★★ **8:30 p.m. WILDLIFE OF YOSEMITE.** A look into the world of some common and not-so-common animals of the Park. One-hour slide presentation. Meet Ranger Michael Nachman at Yosemite Lodge Amphitheater.

★★ **8:30 p.m. YOSEMITE: THE BEAUTY OF NATURE (except August 22).** A unique look into the diverse life and ecology of this beautiful National Park. One-hour slide presentation. Meet Ranger John Jackson at the Lower Pine Campground Amphitheater.

★★ **8:30 p.m. PICTURE YOSEMITE (through August 22).** A slide program by a Kodak photo-

grapher, giving some helpful tips on photographing Yosemite's spectacular beauty. Become more aware of the park through pictures. One-half hour. Curry Village Amphitheater.

TUESDAY

7:00 a.m. SUNRISE CAMERA WALK (through August 23). Join a professional photographer from Eastman Kodak Co. to enjoy and photograph the day's most dramatic light in the coolness of the early morning. Two hours. Meet at Yosemite Lodge Registration Lobby.

★★ **7:30 - 9:00 a.m. COFFEE WITH A RANGER.** Drop in for an early-morning cup of coffee with a Ranger, assistance in planning your day, hiking and sightseeing tips. Lower Pine Campground Amphitheater.

★★ **10:00 a.m. A FIRST LOOK AT YOSEMITE.** See description in *Daily Activities* section. 1½-hour walk. Meet at Visitor Center.

★★ **10:00 a.m. LISTEN, CHILDREN (Ko-wo-yey-a-he-la-ney).** Listen to the stories passed down through generations of Native Americans. Especially for children. One hour. Meet in Indian Village behind Visitor Center.

10:00 a.m. GRANITE & ICE. Consider the forces which produced Yosemite's grand scenery. 2 hours, easy walk. Meet Ranger Michael Nachman at the Yosemite Lodge Amphitheater.

10:00 a.m. PHOTOGRAPHY WORKSHOP (through August 23). Want to sharpen those family snapshots, or focus in on nature's majesty and delicate artistry? Join a professional photographer from Eastman Kodak Co. to learn more about photographic techniques — simple to advanced — that can help you capture those special memories of Yosemite. One hour. Meet at Yosemite Lodge Amphitheater.

1:30 p.m. JUNIOR RANGERS (8-9 YEARS OLD), AND SENIOR RANGERS (10-12 YEARS OLD). Join us in search of adventure in the secret places of Yosemite Valley. 50-cent fee per day to cover cost of supplies. Attend three days and earn a patch! Certificates awarded for one and two days. Three hours. Numbers are limited, so parents, sign up your youngsters at least a day in advance at Happy Isles Nature Center, or phone 372-4471, 10:00 a.m. to 4:00 p.m.

2:00 p.m. BOTANY FOR BEGINNERS. For those with a botanical bent, here's a simple introduction to the plants of Yosemite Valley. Two hours, easy walk. Meet Ranger Marla LaCass at the Visitor Center.

2:00 p.m. THE LORAX. An animated film about a fantasy that might come true. For kids of all ages. One hour, LeConte Memorial.

7:00 p.m. YOSEMITE'S TWILIGHT ZONE. What comes out of hiding at this special time of day? How can we adjust to life in the dark? Two-hour walk. For details and reservations, call 372-4461 from 8:00 a.m. to 7:00 p.m., ask for Visitor Center.

8:00 p.m. LIFE AND LEGACY OF JOHN MUIR (August 2 only). A slide/lecture program by Sierra Club member and historian Barbara Lachalt about this remarkable conservationist. One hour, LeConte Memorial.

★★ **8:30 p.m. THE GRANDEUR OF THE GIANTS (except August 16).** Giant Sequoias are rare and

YOSEMITE VALLEY VISITOR ACTIVITIES

This schedule of visitor activities covers the period of August 1 through September 5, 1983

Tuesday continued

magnificent trees. Come learn of their beauty and ecology. One-hour film. Meet Ranger Bob Clarillos at **Lower Pine Campground Amphitheater**.

★ ★ 8:30 p.m. **THERE'S BEARS IN THEM WOODS**. A close look at Yosemite's most popular subject. One-hour film or slide presentation. Meet Ranger Marla LaCass at **Curry Village Amphitheater**.

★ ★ 8:30 p.m. **PICTURE YOSEMITE (through August 23)**. A slide program by a Kodak photographer, giving some helpful tips on photographing Yosemite's spectacular beauty. Become more aware of the park through pictures. One-half hour. **Yosemite Lodge Amphitheater**.

WEDNESDAY

7:00 a.m. **SUNRISE CAMERA WALK (through August 24)**. Join a professional photographer from Eastman Kodak Co. to enjoy and photograph the day's most dramatic light in the coolness of the early morning. Two hours. Meet at **Yosemite Lodge Registration Lobby**.

★ ★ 7:30 a.m. **YOSEMITE IS FOR THE BIRDS**. Wake up with the birds and share the morning with them and a ranger. Binoculars helpful. Two hours, easy walk. Meet at **Visitor Center**.

8:30 a.m. **VAN TREKS**. All-day field trip with experienced naturalist to study geology of Yosemite, in valley and at Sentinel Dome. Meet at **Valley Visitor Center**. Transportation provided. Cost \$16. (See article on page 1.)

★ ★ 10:00 a.m. **A FIRST LOOK AT YOSEMITE**. See description in *Daily Activities* section. 1½-hour walk. Meet at **Visitor Center**.

1:30 p.m. **JUNIOR RANGERS (8-9 YEARS OLD), AND SENIOR RANGERS (10-12 YEARS OLD)**. Join us in search of adventure in the secret places of Yosemite Valley. 50-cent fee per day to cover cost of supplies. Attend three days and earn a patch! Certificates awarded for one and two days. Three hours. Numbers are limited, so parents, sign up your youngsters at least a day in advance at **Happy Isles Nature Center**, or phone 372-4471, 10 a.m. to 4 p.m.

2:00 p.m. **BEAR NECESSITIES**. We will explore the world of the bear including its den. Two hours, moderate walk. Wear good walking shoes. Meet Ranger Fermin Salas at the **Curry Stables Shuttlebus Stop**.

★ ★ 3:00 p.m. **BACKPACKING AND YOU**. Have you ever considered backpacking? This is an introduction to the wilderness experience and equipment. One-hour demonstration. Meet Ranger Michael Nachman at **Visitor Center Campfire Circle**.

★ ★ 4:00 p.m. **STROLL WITH JOHN MUIR**. Take a leisurely stroll with Yosemite's most famous naturalist. Hear of his life here in the 1870s as shepherd, mill hand, tourist guide, and adventurer. Hear of his encounters with Emerson and Roosevelt. One-hour stroll. **Visitor Center**.

7:00 pm. **SIERRA CLUB PLAYERS** present *Yosanita Mouse* and other puppets of the park! Environmental music and puppet show for kids of all ages. One hour. **LeConte Memorial**.

★ ★ 8:00 p.m. **CONVERSATION WITH A TRAMP**. See article. Admission \$3 for adults, \$1.50 for children and senior citizens. Tickets may be purchased at Visitor Center or at door. **Visitor Center Auditorium**.

★ ★ 8:00 p.m. **WOO-NEH-TOU-LOY-YEHT-ME-WU (Walk and Listen to the Indian)**. Learn about the native people of Yosemite Valley. 45-minute talk and demonstration. Meet in **Indian Village behind Visitor Center**.

★ ★ 8:30 p.m. **WILDLIFE OF YOSEMITE**. A respectful look into the lives of Yosemite's animals. One-hour slide presentation. Meet Ranger Barbara Beard at **Lower Pine Campground Amphitheater**.

✓ ✓ ✓ 8:30 p.m. **WAWONA: A BRIDGE TO YOSEMITE'S PAST**. Join Ranger Mike Adams for a slide program depicting Yosemite's history through Wawona's story. One hour. **Yosemite Lodge Amphitheater**.

★ ★ 8:30 a.m. **PICTURE YOSEMITE (through August 24)**. A slide program by a Kodak photographer, giving some helpful tips on photographing Yosemite's spectacular beauty. Become more aware of the park through pictures. One-half hour. **Curry Village Amphitheater**.

8:30 p.m. **LIFE AND LEGACY OF JOHN MUIR (August 3 only)**. A slide/lecture program by Sierra Club member and historian Barbara Lachalt about this remarkable conservationist. One hour, **LeConte Memorial**.

8:30 p.m. **YOSEMITE IN SONG (beginning August 10)**. A musical interpretation of Yosemite's beauty set to slides featuring live folk guitar and singing. One hour, **LeConte Memorial**.

THURSDAY

7:00 a.m. **SUNRISE CAMERA WALK (through August 25)**. Join a professional photographer from Eastman Kodak Co. to enjoy and photograph the day's most dramatic light in the coolness of the early morning. Two hours. Meet at **Yosemite Lodge Registration Lobby**.

8:30 a.m. **VAN TREKS**. All-day field trip with experienced naturalist to study Yosemite plant and animal communities in valley, Tuolumne Meadows and Tioga Pass. Meet at **Valley Visitor Center**. Transportation provided. Cost \$20. (See article on page 1.)

✓ ✓ ✓ 10:00 a.m. **A FIRST LOOK AT YOSEMITE**. See description in *Daily Activities* section. 1½-hour walk. Meet at **Visitor Center**.

10:00 a.m. **SHADES OF MEANING: YOSEMITE'S TREES**. Come discover their stories. Two hours, easy walk. Meet Ranger John Jackson at **Happy Isles Shuttlebus Stop**.

10:00 a.m. **PHOTOGRAPHY WORKSHOP (through August 25)**. Want to sharpen those family snapshots, or focus in on nature's majesty and delicate artistry? Join a professional photographer from Eastman Kodak Co. to learn more about photographic techniques — simple to advanced — that can help you capture those special memories of Yosemite. One hour. Meet at **Ahwahnee Hotel Lobby**.

★ ★ 10:30 a.m. **DON'T FORGET THE ENERGY CRISIS!** Live demonstrations of solar energy cooking power and technology and the story of

the sun's natural role in Yosemite. One-hour demonstration. Meet Ranger Bob Clarillos in front of the **Visitor Center**.

1:30 p.m. **JUNIOR RANGERS (8-9 YEARS OLD), AND SENIOR RANGERS (10-12 YEARS OLD)**. Join us in search of adventure in the secret places of Yosemite Valley. 50-cent fee per day to cover cost of supplies. Attend three days and earn a patch! Certificates awarded for one and two days. Three hours. Numbers are limited, so parents, sign up your youngsters at least a day in advance at **Happy Isles Nature Center**, or phone 372-4471, 10 a.m. to 4 p.m.

2:00 p.m. **CHILDREN'S HOUR**. For those three to six years old, a time of nature awareness and activities. 1 hour. Meet Ranger at **Happy Isles Nature Center**.

2:00 p.m. **THE MIRROR LAKE STORY (except August 18)**. Come along for a pleasant walk and the interesting story of the Mirror Lake area. Two hours, easy walk. Meet Ranger Michael Nachman at the **Mirror Lake Junction Shuttlebus Stop**.

3:30 p.m. **CHILDREN'S STORY AND MUSIC HOUR**. Come sing with us and hear some Yosemite tales plus other good stories about our beautiful world. One hour, **LeConte Memorial**.

★ ★ 4:00 p.m. **STROLL WITH JOHN MUIR**. Take a leisurely stroll with Yosemite's most famous naturalist. Hear of his life here in the 1870's as shepherd, mill hand, tourist guide, and adventurer. Hear of his encounters with Emerson and Roosevelt. One-hour stroll. **Visitor Center**.

★ ★ 7:00 p.m. **EVENING STROLL**. A pleasant walk in the cool of a Yosemite evening. 45 minutes. Meet Ranger Colleen Kiely at the **Yosemite Lodge Amphitheater**.

★ ★ 8:00 p.m. **CONVERSATION WITH A TRAMP**. See article. Admission \$3 for adults, \$1.50 for children and senior citizens. Tickets may be purchased at Visitor Center or at door. **Visitor Center Auditorium**.

8:00 p.m. **MONO LAKE STORY**. Yosemite's neighbor and possible new national monument. A slide show about a delicate ecosystem to the east of Yosemite, which is threatened with destruction in our search for water. One hour, **LeConte Memorial**.

★ ★ 8:30 p.m. **RAILROADS AND THE NATIONAL PARKS**. A look at the colorful history of the American railroads as they helped establish, protect, and promote National Parks. One-hour slide presentation. Meet Ranger Alfred Runte at **Curry Village Amphitheater**.

★ ★ 8:30 p.m. **MIRROR LAKE: A CONSTANT CHANGE?** The story of ever-changing beauty for this landmark. One-hour slide presentation. Meet Ranger Colleen Kiely at **Yosemite Lodge Amphitheater**.

★ ★ 8:30 p.m. **PICTURE YOSEMITE (through August 25)**. A slide program by a Kodak photographer, giving some helpful tips on photographing Yosemite's spectacular beauty. Become more aware of the park through pictures. One-half hour. **Lower Pine Campground Amphitheater**.

FRIDAY

7:00 a.m. **SUNRISE CAMERA WALK (through August 26)**. Join a professional photographer of

YOSEMITE VALLEY VISITOR ACTIVITIES

This schedule of visitor activities covers the period of August 1 through September 5, 1983

Friday continued

Eastman Kodak Co. to enjoy and photograph the day's most dramatic light in the coolness of early morning. Two hours. Meet at **Yosemite Lodge Registration Lobby**.

★ ★ 7:30 - 9:00 a.m. **COFFEE WITH A RANGER**. Drop in for an early-morning cup of coffee with a Ranger, assistance in planning your day, hiking and sightseeing tips. **Lower Pine Campground Amphitheater**.

8:30 a.m. **VAN TREKS**. All-day field trip with experienced naturalist to study flowers of valley and Glacier Point area. Meet at **Visitor Center**. Transportation provided. Cost \$16. (See article on page 1.)

8:00 a.m. **YOSEMITE IS FOR THE BIRDS (except August 19)**. Wake up with the birds and share the morning with Ranger Michael Nachman. Binoculars helpful. Two hours, easy walk. Meet at the **Lower Pine Campground Entrance**.

9:00 a.m. **WATER, WATER EVERYWHERE — UP THE MIST TRAIL**. Come explore the wonderful world of water. Three hours, moderate hike. Wear good walking shoes and you may want rain gear. Consider bringing a lunch for going farther on your own. Meet Ranger Colleen Kiely at the **Lower Pine Campground Entrance**.

★ ★ 10:00 a.m. **A FIRST LOOK AT YOSEMITE**. See description in *Daily Activities* section. 1½-hour walk. Meet at **Visitor Center**.

10:00 a.m. **CHILDREN'S ECOLOGY WALK**. Come learn about the mysteries of nature and how they're all connected. For those 8 to 11 years old. One hour, **LeConte Memorial**.

1:30 p.m. **JUNIOR RANGERS (8-9 YEARS OLD), AND SENIOR RANGERS (10-12 YEARS OLD)**. Join us in search of adventure in the secret places of Yosemite Valley. 50-cent fee per day to cover cost of supplies. Attend three days and earn a patch! Certificates awarded for one and two days. Three hours. Numbers are limited, so parents, sign up your youngsters at least a day in advance at **Happy Isles Nature Center**, or phone 372-4471, 10 a.m. to 4 p.m.

2:00 p.m. **YOSEMITE: THEN AND NOW**. A look into Yosemite's amazing past and how it has influenced what we see today. Two hours, easy walk. Meet Ranger Barbara Beard at the **Visitor Center**.

✓ ✓ 2:00 p.m. **UP A CREEK (except August 19)**. Wear wading shoes and come explore the rich life in Tenaya Creek. Two hours, moderate walk and wade. Meet Ranger Michael Nachman at the **Mirror Lake Road Junction Shuttlebus Stop**.

★ ★ 2:00 p.m. **THE PATROL HORSE**. Join the horse-mounted Rangers for a demonstration of horse use in Yosemite. Learn about their role in search and rescue, crowd control, and trail patrol. One hour. **Visitor Center**.

★ ★ 2:00 to 4:00 p.m. **QUILTING DEMONSTRATION (except August 5)** by Alicia Dixon of The Ansel Adams Gallery. Two hours. Meet on **Gallery porch**.

2:30 p.m. **CAMERA WALK** sponsored by Ansel Adams Gallery. Free. Please sign up at Ansel Adams Gallery prior to walk, as group size will be limited.

7:00 p.m. **YOSEMITE'S TWILIGHT ZONE (except August 26)**. What comes out of hiding at this special time of day? How can we adjust to life in the dark? Two-hour walk. For details and reservations, call 372-4461 from 8:00 a.m. to 7:00 p.m., ask for **Visitor Center**.

★ ★ 7:00 p.m. **EVENING STROLL**. A pleasant walk in the cool of a Yosemite evening. 45 minutes. Meet Ranger Alfred Runte at the **Yosemite Lodge Amphitheater**.

7:00 p.m. **SIERRA CLUB PLAYERS** present *Yosanti Mouse* and other puppets of the park! Environmental music and puppet shows for all ages. One hour. **LeConte Memorial**.

★ ★ 8:00 p.m. **CONVERSATION WITH A TRAMP**. See article. Admission \$3 for adults, \$1.50 for children and senior citizens. Tickets may be purchased at **Visitor Center** or at door. **Visitor Center Auditorium**.

8:00 p.m. **ANSEL ADAMS, PHOTOGRAPHER**. Film sponsored by The Ansel Adams Gallery. Free. **Visitor Center Auditorium**.

✓ ✓ ✓ 8:30 p.m. **WILDLIFE SUPERMARKET**. What do Park animals shop for and how do they get it? Come browse a wild shopping list. One-hour slide presentation. Meet Ranger Mark Elliott at the **Lower Pine Campground Amphitheater**.

★ ★ 8:30 p.m. **LEGACY OF THE NATIONAL PARKS**. Come trace the origins and growth of the National Park idea in the U.S., from Yosemite in 1864 to Alaska in the 1980's. One-hour slide presentation. Meet Ranger Alfred Runte at the **Yosemite Lodge Amphitheater**.

★ ★ 8:30 p.m. **PICTURE YOSEMITE (through August 26)**. A slide program by a Kodak photographer giving some helpful tips on photographing Yosemite's spectacular beauty. Become more aware of the park through pictures. One-half hour. **Curry Village Amphitheater**.

8:30 p.m. **THE TUOLUMNE RIVER STORY (except August 12 and September 2)**. Come find out what could be happening with our favorite wild river. Slide show by Tuolumne River Preservation trust. One hour, **LeConte Memorial**.

8:30 p.m. **YUBA GAP STRING BAND (August 12 only)**. An evening of acoustic folk music, bluegrass and rock-n-roll. Come listen and sing along with these outstanding environmental musicians; featuring guitar, mandolin, banjo and bass fiddle. One hour, **LeConte Memorial**.

8:30 p.m. **WHAT'S HAPPENING TO THE TUOLUMNE RIVER (September 2 only)**. Peter Steinhart of Palo Alto, California, writer and columnist for National Audubon Magazine will present a slide show and discussion on the Tuolumne River. One hour, **LeConte Memorial**.

SATURDAY

7:00 a.m. **SUNRISE CAMERA WALK (through August 27)**. Join a professional photographer from Eastman Kodak Co. to enjoy and photograph the day's most dramatic light in the coolness of early morning. Two hours. Meet at **Yosemite Lodge Registration Lobby**.

★ ★ 7:30 - 9:00 a.m. **COFFEE WITH A RANGER**. Drop in for an early-morning cup of coffee

with a Ranger, assistance in planning your day, hiking and sightseeing tips. **Lower Pine Campground Amphitheater**.

8:30 a.m. **VAN TREKS**. All-day field trip with experienced naturalist to study Yosemite's meadows in the valley, along Tioga Road and in Tuolumne. Meet at **Valley Visitor Center**. Transportation provided. Cost \$20. (See article on page 1.)

✓ ✓ ★ ★ 10:00 a.m. **A FIRST LOOK AT YOSEMITE**. See description in *Daily Activities* section. 1½-hour walk. Meet at **Visitor Center**.

10:00 a.m. **SMALL WONDERS**. Have you ever looked beneath your feet? Bring the kids in search of tiny mysteries. Two hours, easy walk. Meet Ranger Mark Elliott at the **Happy Isles Shuttlebus Stop**.

10:00 a.m. **PHOTOGRAPHY WORKSHOP (through August 27)**. Want to sharpen those family snapshots, or focus in on nature's majesty and delicate artistry? Join a professional photographer from Eastman Kodak Co. to learn more about photographic techniques — simple to advanced — that can help you capture those special memories of Yosemite. One hour. Meet at **Yosemite Lodge Amphitheater**.

✓ ✓ ★ ★ 12:00 noon **SIGN LANGUAGE FOR LUNCH**. Join the Park Service's sign language interpreter for a one-hour sign language introduction and practice session. All welcome, whether native signers or beginners. Meet in front of the **Visitor Center**.

2:00 p.m. **CHILDREN'S HOUR**. For those three to six years old, a time of nature awareness and activities. One hour. Meet Ranger at **Happy Isles Nature Center**.

2:00 p.m. **KID'S PROGRAM**. For those seven to ten years old, an outdoor adventure in nature's games. One hour. Meet Ranger at **Happy Isles Nature Center**.

★ ★ 2:00 p.m. **DESIGNS FOR SURVIVAL**. Come explore the dynamic strategies which plants and animals use to survive in a sometimes harsh environment. Two hours, easy walk. Meet Ranger Marla LaCass at **Visitor Center**.

★ ★ 2:00 p.m. **THE FUTURE FOR YOSEMITE**. National Park planning is a constant challenge. Come along for an overview of Yosemite's General Management Plan. One and one-half hours, easy walk. Meet Ranger Alfred Runte at the **Visitor Center**.

★ ★ 2:00 to 4:00 p.m. **QUILTING DEMONSTRATION (except September 3)** by Alicia Dixon of The Ansel Adams Gallery. Two hours. Meet on **Gallery porch**.

2:30 p.m. **GALLERY WALK** sponsored by Ansel Adams Gallery. Free. Please sign up at Ansel Adams Gallery prior to walk, as group size will be limited.

★ ★ 6:30 p.m. **EVENING STROLL**. A pleasant walk in the cool of Yosemite evening. 45 minutes. Meet Ranger Fermin Salas at the **Visitor Center**.

★ ★ 8:00 p.m. **CONVERSATION WITH A TRAMP**. See article. Admission \$3 for adults, \$1.50 for children and senior citizens. Tickets may be purchased at **Visitor Center** or at door. **Visitor Center Auditorium**.

YOSEMITE VALLEY VISITOR ACTIVITIES

This schedule of visitor activities covers the period of August 1 through September 5, 1983

Saturday continued

8:00 p.m. LE CONTE MEMORIAL LECTURE SERIES. Presented by the Sierra Club. One to two hours. **LeConte Memorial.**

August 6: A LAST WILDERNESS — THE AMAZON. Presented by naturalist John Jackson. This lecture/slide program examines the spectacular diversity of life in the Amazon Basin and the threat of its destruction.

August 13: THE HUMAN AND NATURAL HISTORY OF YOSEMITE. Slide/lecture program by Mrs. Mary E. Lester, giving an overview of the many interesting facets of Yosemite's history, geology, plants and animals.

August 20: SONGS FOR A NUCLEAR (NEW CLEAR) FREE '83. An evening with Mark Levy, singer, songwriter, environmental activist and recording artist.

August 27: WILDERNESS AS SACRED SPACE. Experiencing power in the out-of-doors. A musical slide show/discussion with Stephanie Kaza, Ph.D., Education Director of the Point Reyes Bird Observatory.

September 3: TUOLUMNE RIVER — WHAT IS HAPPENING. John Amadeo, Executive Director of the Tuolumne River Preservation Trust will present a slide program and discussion about this magnificent river and what might be happening to it.

★ ★ **8:30 p.m. MEWA-EH?** Come step into the past and the life of the Yosemite Indians. Bring your own cup for some traditional drink. One-hour talk. Meet in the **Indian Village** behind the **Visitor Center.**

★ ★ **8:30 p.m. RAILROADS AND THE NATIONAL PARKS.** A look at the colorful history of the American railroads as they helped establish, protect and promote National Parks. One-hour slide presentation. Meet Ranger Alfred Runte at **Lower Pine Campground Amphitheater.**

★ ★ **8:30 p.m. THE HORSE, OF COURSE.** Join a Ranger for a look at how horses and mules are used in Yosemite. One hour. **Curry Village Amphitheater.**

★ ★ **8:30 p.m. PICTURE YOSEMITE (through August 27).** A slide program by a Kodak photographer giving some helpful tips on photographing Yosemite's spectacular beauty. Become more aware of the park through pictures. One-half hour. **Yosemite Lodge Amphitheater.**

★ ★ **2:00 p.m. YOSEMITE — THE FIRST NATIONAL PARK.** . . and you thought it was Yellowstone? A probe into the national significance of Yosemite. Two hours, easy walk and talk. Meet Ranger Alfred Runte at the **Visitor Center.**

✓ **2:00 p.m. SUMMER BOTANY WALK.** A fresh look at summer's flowers and plants. Two hours, easy walk. Meet Ranger Marla LaCass at **Happy Isles Shuttlebus Stop.**

★ ★ **8:30 p.m. DYNAMISM, DYNAMITE AND BEARS.** A look at the whimsical and serious sides of the National Park Service in its early years. One-hour slide presentation. Meet Ranger Alfred Runte at **Curry Village Amphitheater.**

★ ★ **8:30 p.m. BEARLY MANAGING.** An enthusiastic tribute to Yosemite's largest mammal. One-hour slide presentation. Meet Ranger Fermin Salas at **Lower Pine Campground Amphitheater.**

★ ★ **8:30 p.m. LATITUDE & LIGHT.** A new perspective of the valley within the range of light. Presented by James Corwin Johnson, Yosemite's photographer. One hour, **Yosemite Lodge Amphitheater.**

SUNDAY

8:30 a.m. VAN TREKS. All-day field trip with experienced naturalist to study Yosemite's wildflowers and plant families in the valley and Tuolumne Meadows. Meet at **Valley Visitor Center.** Transportation provided. Cost \$20. (See article on p. 1.)

9:00 a.m. WATER, WATER EVERYWHERE — UP THE MIST TRAIL (except August 28). Can there be too much or too little? Come explore its forces and effects. Three hours, moderate hike. Wear good walking shoes and you may want raingear. Consider bringing a lunch for going farther on your own. Meet Ranger Barbara Beard at the **Lower Pine Campground Entrance.**

★ ★ **10:00 a.m. A FIRST LOOK AT YOSEMITE.** See description in *Daily Activities* section. 1½-hour walk. Meet at **Visitor Center.**

IN CASE OF EMERGENCY

DIAL 911

24 HOURS
A DAY

Park phone
(209) 372-4461

Guided Horseback Rides

In Yosemite is one of America's finest stable facilities — fully staffed by expert wranglers. No riding experience is necessary to take one of the professionally guided tours.

Two-hour guided trail rides are available many times daily. These rides are available with travels to Yosemite Falls or Mirror Lake.

For spectacular views of Vernal and Nevada Falls, the half-day mule ride is suggested. These rides are offered at 8 a.m. and 1 p.m. daily, and there are special all-day trips to the top of a Valley panoramic vista.

For the youngsters, the Valley stables offer walk-and-lead pony rides. Also popular is the burro picnic — a half-day adventure complete with stories, games and picnic stop.

Reservations are advised for all stable rides and can be made at the stables office or the hotel Tour Centers. Riding stables are located at Wawona, White Wolf, Tuolumne Meadows, as well as in Yosemite Valley. For more information call 372-1248.

Mike Ross Leads Tuolumne Day Hikes

A program of day-long naturalist hikes is offered at Tuolumne Meadows through August 21. Michael Ross will conduct the program, which will consist of:

Thursday - *Wildflowering for Beginners*;

Friday - *Birds of Tuolumne Meadows*;

Saturday - *Geology*;

Sunday - *Alpine Botany*.

Hikes vary from easy to strenuous, the most demanding being *Alpine Botany*, which takes participants to Mount Dana at about 13,000' in five miles, with an elevation gain of 3,000'.

Fees for these classes are \$5 per person, per day, or \$17 for the complete four-day cycle. It is not necessary to pre-enroll; those wishing to participate should meet Ross at the Lambert Dome Parking Lot at 8:30 a.m., except for the birding class which will meet at 7:30 a.m. Additional information and registration are available at the Tuolumne Meadows Visitor Center

TUOLUMNE MEADOWS ACTIVITIES

This schedule of visitor activities covers the period of August 1 through September 5, 1983

DAILY ACTIVITIES

Special activities not listed in the *Yosemite Guide* are posted and announced in the Visitor Center.



Programs with two stars (★★) are suitable for visitors in wheelchairs, with assistance, as well as the able-bodied. Printed information on Park programs, facilities, and trails is available at entrance and information stations.

TUOLUMNE MEADOWS VISITOR CENTER. Open 8:00 a.m. to 7:30 p.m. daily. Trail information, books, maps, orientation and special programs. 372-4461, ext. 327.

PARSON MEMORIAL LODGE. (beginning August 1). Open 10:00 a.m. to 5:00 p.m. daily. Trail information, books, maps, orientation and special programs.

CAMPFIRE PROGRAM AT TUOLUMNE MEADOWS CAMPGROUND, DANA CIRCLE. 8:00 p.m. daily.

SPECIAL ACTIVITIES

MONDAY

9:00 a.m. REMINISCENCES OF CARL SHARSMITH (August 1, 22, and 29 only). A firsthand look at 50 summers in Tuolumne Meadows. Limited to 25 persons. Three hours. For reservations, contact the Tuolumne Meadows Visitor Center at 372-4461, ext. 327.

9:30 a.m. GLACIAL FOOTPRINTS. Carved by ice and set in stone, the tracks of the Tuolumne glacier lead to a wonderful view and place in the sun. Two hours, two miles (3.2 km), moderate. Meet at **Pothole Dome parking area, road marker T-29.**

10:00 a.m. SODA SPRINGS. Hike to historic Parson's Lodge and Soda Springs beside flowering meadows. Two hours, easy. Meet at **Tuolumne Meadows Campground entrance.**

11:00 a.m. LUNCH ON A GRANITE TABLE. Bring a lunch and discover the signs left by glaciers on Lembert Dome. Four hours, three miles (4.8 km), moderate. Meet at **Lembert Dome parking area, road marker T-32.**

1:30 p.m. RIVER OF LIFE. Splash around and discover the life in the water. Two hours, two miles (3.2 km), easy. Meet at **Tuolumne Meadows Campground entrance.**

2:00 p.m. DISCOVER NATURE'S FLOWER GARDEN. Two hours, two miles (3.2 km), easy. Meet at **Tuolumne Meadows Campground entrance.**

2:30 p.m. ANIMAL SIGNS. What animals have been here? Discover through tracks and sounds. Two hours, one mile (1.6 km), easy. Meet at **Lembert Dome parking area, road marker T-32.**

★ ★ 8:00 p.m. CAMPFIRE PROGRAM AT TUOLUMNE MEADOWS CAMPGROUND, DANA CIRCLE. One hour.

9:15 p.m. STARS ABOVE TUOLUMNE (August 22, Moon Walk). Find a star to wish upon while

discussing legends and a history of the heavens. Dress warmly and bring a sitting pad. Meet at **Tuolumne Meadows Campground entrance.**

TUESDAY

9:00 a.m. ALL-DAY HIKE TO BUDD LAKE. Hike to a lake surrounded by glacial peaks. Eight hours, eight miles (12.8 km), strenuous. Limited to 11 persons to reduce ecological impact. For reservations, contact the Tuolumne Meadows Visitor Center at 372-4461, ext. 327.

9:00 a.m. to 12:00 noon. JOIN THE JUNIOR RANGERS. Thrilling discoveries are in store when your prowl through Tuolumne Meadows. Ages 8-10; 25 cents per day. Attend three days and earn a patch! Meet at **Lembert Dome parking area, road marker T-32.**

10:00 a.m. HIGH COUNTRY. Walk to a panoramic view of the Sierra. Two hours, one mile (1.6 km), easy. Meet at **Tuolumne Meadows Campground entrance.**

10:00 a.m. DANA MEADOWS. Discover the life in the subalpine zone 10,000 feet above sea level. Two hours, two miles (3.2 km), moderate. Meet at **Tioga Pass entrance, road marker T-39.**

1:00 p.m. CARL SHARSMITH - HIGH MEADOWS (August 2, 23, and 30 only). A personal view of Tuolumne Meadows with Yosemite's most experienced naturalist. Limited to 25 persons. Three hours. For reservations, contact the Tuolumne Meadows Visitor Centers at 372-4461, ext. 327.

2:00 p.m. IT'S HISTORICAL. Step into history without leaving today. Two to three hours, easy. Meet at **Lembert Dome parking area, road marker T-32.**

2:00 p.m. GET DOWN WITH PLANTS. Discover the fascinating world of mosses, lichens, fungi and more. Two hours, one mile (1.6 km), easy. Meet at **Tuolumne Meadows Campground entrance.**

4:00 p.m. NOT SO EARLY BIRDS. Discover birds and their habitat at a reasonable hour. Bring binoculars if possible. Two hours, easy. Meet at **Lembert Dome parking area, road marker T-32.**

7:00 p.m. SUNSET WALK. The end of a perfect day. One hour, one mile (1.6 km), easy. Meet at **Lembert Dome parking area, road marker T-32.**

★ ★ 8:00 p.m. CAMPFIRE PROGRAM AT TUOLUMNE MEADOWS CAMPGROUND, DANA CIRCLE. One hour.

8:30 p.m. CARL SHARSMITH - A TRADITIONAL CAMPFIRE (August 2, 23, 30 only). TUOLUMNE MEADOWS LODGE. One hour.

WEDNESDAY

9:00 a.m. to 12:00 noon. JUNIOR RANGERS. Join the ranks of Yosemite's finest. Ages 8-10, 25 cents per day. Attend three days and earn a shoulder patch. Meet at **Lembert Dome parking area, road marker T-32.**

9:30 a.m. IS SOMETHING BUGGING YOU? Discover the interesting world of insects. Two hours, one mile (1.6 km), easy. Meet at **Tuolumne Meadows Campground entrance.**

10:00 a.m. BOTANY FOR BEGINNERS. Open your

eyes to the plants of Tuolumne Meadows. Two hours, one mile (1.6 km), easy. Meet at the **Tuolumne Meadows Visitor Center.**

10:00 a.m. SHORT WALK TO THE WILD. Find the feeling of wilderness... within a short distance. Two hours, two miles (3.2 km), easy. Meet at the **Tuolumne Meadows Lodge.**

1:30 p.m. SPECIAL WALK. Ranger's choice! Two to three hours, easy to moderate. Meet at **Tuolumne Meadows Campground entrance.**

2:00 p.m. WHICH WAY DO WE GO? Expand your horizons and your self-confidence. Unravel the mysteries of the compass and route finding in the wilderness. Three hours, three miles (4.8 km), moderate. Meet at **Lembert Dome parking area, road marker T-32.**

2:30 p.m. SODA SPRINGS. Hike to historic Parson's Lodge and the bubbly Soda Springs. Two hours, easy. Meet at the **Tuolumne Meadows Campground entrance.**

★ ★ 8:00 p.m. CAMPFIRE PROGRAM AT TUOLUMNE MEADOWS CAMPGROUND, DANA CIRCLE. One hour.

8:30 p.m. CAMPFIRE PROGRAM AT TUOLUMNE LODGE. One hour.

THURSDAY

7:30 a.m. JOG WITH A RANGER. An invigorating way to warm up the morning. Easy run, 45 minutes. Three miles (5 km). Meet at **Tuolumne Meadows Campground entrance.**

8:30 a.m. WILDFLOWERS FOR BEGINNERS (until August 18). Join naturalist Mike Ross to admire and learn more about subalpine blooms. Sponsored by YNHA, \$5 fee. Five hours, five miles (8 km), moderate. Bring a lunch. Meet at **Lembert Dome parking area, road marker T-32.**

9:00 a.m. to 12:00 noon JUNIOR RANGERS. Ages 8-10, 25 cents per day. Attend three days and earn a shoulder patch. Meet at **Lembert Dome parking area, road marker T-32.**

9:00 a.m. TUOLUMNE FROM THE TOP. Explore the shapes and signs left by glaciers on Lembert Dome. Three hours, three miles (4.8 km), moderate. Meet at **Lembert Dome parking area, road marker T-32.**

9:30 a.m. ALL-DAY HIKE TO GAYLOR LAKES. Hike to a basin that offers lakes, sweeping views and a glimpse into early mining history. Bring a lunch, raingear, water and wear sturdy shoes. Six hours, six miles (9.6 km), strenuous. Meet at **Tioga Pass entrance, road marker T-39.**

10:00 a.m. MICE, MEADOWS AND MAN. A closer look at the largest subalpine meadow in the Sierra. Two hours, one mile (1.6 km), easy. Meet at **Tuolumne Meadows Campground entrance.**

1:00 p.m. CARL SHARSMITH - HIGH MEADOWS (August 4, 25, and September 1 only). See Tuesday's guide description.

2:00 p.m. A FOREST IS MORE THAN TREES. Explore the intriguing plant and animal communities of the high sierra forest. Two hours, two miles (3.2 km), easy. Meet at the **Tuolumne Meadows Lodge.**

2:00 p.m. SILVER MINE WALK. Join an 1883 miner on a walk to the Tioga Mine. Three hours, three miles (4.8 km), moderate. Meet at **Tioga Pass entrance, road marker T-39.**

TUOLUMNE MEADOWS ACTIVITIES

This schedule of visitor activities covers the period of August 1 through September 5, 1983

Thursday continued

2:00 p.m. THE BIG SNOW! Do you remember the endless winter of 1982-83? Walk along the banks of the Tuolumne River and learn the reasons behind our record winter. Two hours, two miles (3.2 km), easy. Meet at **Lembert Dome parking area, road marker T-32.**

★ ★ 8:00 p.m. CAMPFIRE PROGRAM AT TUOLUMNE MEADOWS CAMPGROUND, DANA CIRCLE. One hour.

8:30 p.m. CARL SHARSMITH - A TRADITIONAL CAMPFIRE (August 4, 25 and September 1 only). TUOLUMNE MEADOWS LODGE. One hour.

8:30 p.m. NIGHT PROWL. Explore Tuolumne after sundown and discover the night world. Two hours, one mile (1.6 km), easy. Limited to 25 people. For reservations, contact the **Tuolumne Meadows Visitor Center at 372-4461, ext. 327.**

FRIDAY

7:30 a.m. BIRDS OF TUOLUMNE (until August 19). A quest for birds of the high country with naturalist Mike Ross. Sponsored by YNHA, \$5 fee. Five hours, four miles (6.4 km), moderate. Bring lunch. Meet at **Lembert Dome parking area, road marker T-32.**

9:00 a.m. WHICH WAY DO WE GO? Expand your knowledge of basic map, compass and wilderness survival techniques. Three hours, three miles (4.8 km), moderate. Meet at **Lembert Dome parking area, road marker T-32.**

9:30 a.m. ALL-DAY HIKE. Explore the history of the national park idea while journeying to one of Tuolumne's less visited locations. Seven hours, moderate. Bring a lunch and a car to drive to the trailhead. Meet at **Tuolumne Meadows Campground entrance.**

9:30 a.m. ANIMAL SIGNS. What animals have been here? Discover the animal life in the area through tracks, sounds and scats. Two hours, one mile (1.6 km), easy. Meet at **Lembert Dome parking area, road marker T-32.**

10:00 a.m. NATURE'S FLOWER GARDEN. What flowers color the landscape? Two hours, two miles (3.2 km), easy. Meet at **Tuolumne Meadows Campground entrance.**

11:00 a.m. LUNCH ALONG THE TUOLUMNE RIVER. An easy walk beside one of Yosemite's largest rivers. Bring a lunch and water. Four hours, three miles (4.8 km). Meet at **Tuolumne Meadows Campground entrance.**

1:00 p.m. CARL SHARSMITH - REMINISCENCES (August 5, 26 and September 2 only). See Monday's description.

2:00 p.m. TUOLUMNE'S FIRST CAMPERS. Demonstration of survival skills of the Indian

people who camped here two hundred years ago. Two and one half hours, easy. Meet at **Lembert Dome parking area, road marker T-32.**

★ ★ 2:30 p.m. LITTLE PEOPLE'S NATURE WALK. Ages 4-7. Bring your parents on this introduction to nature. One hour, easy. Meet at the **Tuolumne Meadows Campground entrance.**

2:30 p.m. JUST PICTURE IT. Join a ranger for a photography excursion into Yosemite's high country. Two hours, two miles (3.2 km), easy. Meet at the **Tuolumne Meadows Visitor Center.**

★ ★ 7:00 p.m. CHILDREN'S CAMPFIRE AT TUOLUMNE MEADOWS CAMPGROUND, CONNESS CIRCLE. Especially for children, but parents are welcome. One hour.

8:00 p.m. CAMPFIRE PROGRAM AT TENAYA LAKE CAMPGROUND. One hour.

★ ★ 8:00 p.m. CAMPFIRE PROGRAM AT TUOLUMNE MEADOWS CAMPGROUND, DANA CIRCLE. One hour.

SATURDAY

7:00 a.m. to 10:00 a.m. MOUNTAIN MANNERS. Make your backpack trip more comfortable while reducing your impact. Continuous demonstration at the **Tuolumne Meadows Wilderness Permit Kiosk.**

8:30 a.m. GEOLOGY OF TUOLUMNE (until August 20). Join naturalist Mike Ross for a closer look at the unique geology of the meadows area. Sponsored by YNHA, \$5 fee. Six hours, five miles (8 km), moderate. Bring a lunch. Meet at **Lembert Dome parking area, road marker T-32.**

9:00 a.m. ALL-DAY HIKE TO MT. DANA. Climb Yosemite's second highest peak (13,053 feet), and see from Nevada to California's coast. Limited to 11 people to reduce ecological impact. Eight hours, six miles (9.6 km), **STRENUOUS.** For reservations contact the **Tuolumne Meadows Visitor Center, at 372-4461, ext. 327.**

9:30 a.m. TUOLUMNE CASCADES. Three hours, four miles (6.4 km), easy. Meet at **Pothole Dome parking area, at the west end of Tuolumne Meadows, road marker T-29.**

10:00 a.m. HIGH MEADOWS. A close look at the animal and plant life of Tuolumne Meadows. Two hours, one mile (1.6 km), easy. Meet at **Tuolumne Meadows Campground entrance.**

1:30 p.m. FORKS OF THE TUOLUMNE RIVER. Explore the life that exists in the run-off of the melting snowpack. Two hours, two miles (3.2 km), easy and rather wet. Meet at **Tuolumne Meadows Campground entrance.**

2:00 p.m. SILVER MINE WALK. Join an 1883 miner on a walk to the Tioga Mine. Three hours, three miles (4.8 km), moderate. Meet at **Tioga Pass entrance, road marker T-39.**

★ ★ 2:30 p.m. STORY HOUR FOR CHILDREN OF ALL AGES. Lose yourself in fantasy as the

ranger spins tales, fables and legends. Easy and fun. One and one-half hours. Meet at the **Tuolumne Meadows Visitor Center.**

★ ★ 8:00 p.m. CAMPFIRE PROGRAM AT TUOLUMNE MEADOWS CAMPGROUND, DANA CIRCLE. One hour.

★ ★ 8:00 p.m. CAMPFIRE PROGRAM AT TENAYA LAKE CAMPGROUND. One hour.

★ ★ 8:30 p.m. CAMPFIRE PROGRAM AT TUOLUMNE LODGE. One hour.

9:15 p.m. PATTERNS IN THE SKY (August 23, Moon Walk). Join a ranger on an adventure through Tuolumne's night sky. One hour, easy, dress warmly and bring a sitting pad. Meet at **Tuolumne Meadows Campground entrance.**

SUNDAY

7:30 a.m. MAINLY BIRDS. Get up with the birds to share the early morning with them. Bring binoculars if possible. Two hours, easy. Meet at **Lembert Dome parking area, road marker T-32.**

8:30 a.m. ALPINE BOTANY (until August 21). Join naturalist Mike Ross to examine the plants in the land above the trees. Sponsored by YNHA, \$5 fee. Six hours, six miles (9.6 km), **STRENUOUS.** Bring a lunch. Meet at **Lembert Dome parking area, road marker T-32.**

9:30 a.m. ALL-DAY HIKE TO MONO PASS. Trace the steps of Indians, cavalry and miners across the mountain range. Bring a lunch, rain-gear and wear sturdy shoes. Six hours, six miles (9.6 km), moderate. Meet at **Mono Pass trailhead, road marker T-37.**

10:00 a.m. TUOLUMNE MEADOWS. Explore the ever-changing meadow ecology. Two hours, two miles (3.2 km), easy. Meet at **Tuolumne Meadows Campground entrance.**

11:00 a.m. LUNCH AT TUOLUMNE CASCADES. Bring a lunch and explore the beginning of the Grand Canyon of the Tuolumne. Four hours, four miles (6.4 km), easy. Meet at **Pothole Dome parking area at the west end of Tuolumne Meadows, road marker T-29.**

2:00 p.m. POISONOUS AND EDIBLE PLANTS. The Indians knew them, do you? Two hours, two miles (3.2 km), easy. Meet at **Tuolumne Meadows Campground entrance.**

2:00 p.m. PONDS. Discover the insects and plants of a subalpine pond. Two hours, two miles (3.2 km), easy. Meet at **Pothole Dome parking area, at the west end of Tuolumne Meadows, road marker T-29.**

7:00 p.m. IN THE SPIRIT OF MUIR. Peaceful stroll to view the Sierra through the eyes of naturalist John Muir. 45 minutes, easy. Meet at **Tuolumne Meadows Campground entrance.**

★ ★ 8:00 p.m. CAMPFIRE PROGRAM AT THE TUOLUMNE MEADOWS CAMPGROUND, DANA CIRCLE. One hour.

★ ★ 8:30 p.m. CAMPFIRE PROGRAM AT THE TUOLUMNE LODGE. One hour.

5-Cent Container Deposit Works

Yosemite Park & Curry Co.'s program of levying a 5-cent deposit on soft drink and beer containers has reduced litter in Yosemite and helped fund back-country clean-up projects.

Containers must be marked *Yosemite 5-cent deposit* for the 5-cent refund; non-marked aluminum cans returned to the Recycling Center are worth one cent.

To receive the refund, turn in your cans at the Valley Recycling Center.

CRANE FLAT/WHITE WOLF ACTIVITIES

This schedule of visitor activities covers the period of August 1 through September 5, 1983

DAILY ACTIVITIES

Programs with two stars (★★) are suitable for visitors in wheelchairs, with assistance, as well as the able-bodied. Printed information on Park programs, facilities and trails is available at entrance and information stations.

BIG OAK FLAT INFORMATION STATION. Highway 120 West. 8:00 a.m. to 6:00 p.m. daily. 372-4461, Ext. 324

SPECIAL ACTIVITIES

MONDAY

White Wolf

1:30 p.m. RIVER OF LIFE. Come splash around with a ranger and discover the life in the middle fork of the Tuolumne River. Two hours, two miles (3.2 km), easy and wet. Meet at **White Wolf Campground entrance.**

8:00 p.m. NIGHT PROWL. Heighten your senses and discover the "Night Life" of White Wolf. One and one-half hours, one mile (1.6 km), easy. Meet at **White Wolf Campground entrance.**

Crane Flat

2:00 p.m. NATURAL FIRES. Discover the close relationship between the survival of forests and natural fires. Three hours, two miles (3.2 km), moderate. Meet at **Tuolumne Grove turnout, one mile east of the junction on the Tioga road.**

8:00 p.m. CAMPFIRE PROGRAM AT CRANE FLAT CAMPGROUNDS. One hour.

TUESDAY

White Wolf

1:30 p.m. GRANITE AND ICE. Consider the forces that produced Yosemite's grand scenery. Two hours, two miles (3.2 km), easy. Meet at **White Wolf Campground entrance.**

Crane Flat

8:00 a.m. FLIERS IN THE SKY. Discover the amazingly diverse bird life around Crane Flat meadows. Bring binoculars if possible. Two hours, two miles (3.2 km), easy. Meet at **Tuolumne Grove turnout, one mile east of the junction on the Tioga road.**

2:00 p.m. MEET THE GIANT SEQUOIA. Join a ranger and discover the ecology and history of the Big Trees. One and one-half hours, one mile (1.6 km), easy. Meet at **first parking area on the right in the Tuolumne Grove.**

8:00 p.m. CAMPFIRE PROGRAM AT CRANE FLAT CAMPGROUND. One hour.

WEDNESDAY

White Wolf

2:00 p.m. A FOREST IS MORE THAN TREES. A closer look at the forest environment around White Wolf. Three hours, two miles (3.2 km), moderate. Meet at **White Wolf Campground entrance.**

8:00 p.m. CAMPFIRE PROGRAM AT WHITE WOLF CAMPGROUND. One hour.

Crane Flat

2:00 p.m. THEY REMEMBER THE DINOSAURS. Join a ranger and discover the ecology and history of the Great Sequoia. Three hours, two miles (4.8 km), moderate. Meet at **Tuolumne Grove turnout, one mile east of the junction on the Tioga Road.**

8:00 p.m. CAMPFIRE PROGRAM AT CRANE FLAT CAMPGROUND. One hour.

THURSDAY

White Wolf

2:00 p.m. WILDFLOWERS OF WHITE WOLF. Discover the flower gardens of this area. Three hours, two miles (3.2 km), moderate. Meet at **White Wolf Campground entrance.**

8:00 p.m. CAMPFIRE PROGRAM AT WHITE WOLF CAMPGROUND. One hour.

FRIDAY

White Wolf

10:00 a.m. HARDEN LAKE. Hike to a nearby lake with Ranger Marilyn Muse. Bring lunch, water and swimsuit. Five hours, six miles (9.6 km), moderate. Meet at **White Wolf Campground entrance.**

8:00 p.m. CAMPFIRE PROGRAM AT WHITE WOLF CAMPGROUND. One hour.

Crane Flat

2:00 p.m. OF MICE AND MEADOWS. Discover the plant and animal life of the beautiful Crane Flat meadows. Two hours, two miles (3.2 km), easy. Meet at **Crane Flat Campground entrance.**

8:00 p.m. CAMPFIRE PROGRAM AT CRANE FLAT CAMPGROUND. One hour.

SATURDAY

White Wolf

8:30 a.m. ALL-DAY HIKE. Ranger's choice! Trail, snow conditions and weather will determine destination. Wear sturdy shoes, bring lunch, raingear and water. Eight hours, eight miles (12.8 km), moderate. Meet at **White Wolf Campground entrance.**

10:30 a.m. ECOLOGICAL INVESTIGATIONS FOR THE YOUNG AND YOUNG-HEARTED. Discover what's happening with the plants and animals around White Wolf. Two hours, one mile (1.6 km), easy. Meet at **White Wolf Campground entrance.**

8:00 p.m. CAMPFIRE PROGRAM AT WHITE WOLF CAMPGROUND. One hour.

Crane Flat

10:00 a.m. FUR, FEATHERS, AND CRAWLY THINGS. Discover the amazing animal life that is so important to the forests of Crane Flat. Two hours, two miles (3.2 km), easy. Meet at **Crane Flat Campground entrance.**

2:00 p.m. MEET THE GIANT SEQUOIA (Except August 6). Join a ranger and discover the ecology and history of the Big Trees. One and one-half hours, one mile (1.6 km), easy. Meet at **first parking area on the right in the Tuolumne Grove.**

8:00 p.m. CAMPFIRE PROGRAM AT CRANE FLAT CAMPGROUND (Except August 6). One hour.

SUNDAY

White Wolf

9:00 a.m. ANIMAL SIGNS. Let's explore the world of animals around White Wolf. Look for animal homes, tracks and signs. Two hours, one mile (1.6 km), easy. Meet at **White Wolf Campground entrance.**

1:30 p.m. THE FIRST PEOPLE OF WHITE WOLF. Step in the past and discover the survival techniques of Yosemite's first campers. Two hours, one mile (1.6 km), easy. Meet at **White Wolf Campground entrance.**

8:00 p.m. CAMPFIRE PROGRAM AT WHITE WOLF CAMPGROUND. One hour.

Crane Flat

9:00 a.m. CLARK RANGE VIEWPOINT (Except August 7). Hike to a spectacular view of the high country through magnificent forests. Three hours, three miles (4.8 km), easy. Meet at **Crane Flat Campground entrance.**

Art Classes Available

Through the efforts of the National Park Service, Yosemite Park and Curry Co. and the Yosemite Natural History Association, a series of informal outdoor classes in painting, sketching and photography are available free to the public. YNHA has engaged people who are professionals in these areas to conduct 4-hour sessions daily at the Art Activity Center which is located next to the Post Office.

Classes start at 10:00 a.m. and continue until about 2:00 p.m.

Schedule of visiting artists and the media in which they work: August 1-7, Lynn McAfee, photography; August 8-14, Lyman Peterson, watercolor; August 15-21, Toni Carner, multiple media; August 22-28, Tom Fong, watercolor; August 19-September 4, Rebecca Alex, pen & ink/pastels

WAWONA VISITOR ACTIVITIES

This schedule of visitor activities covers the period of August 1 through September 5, 1983

DAILY ACTIVITIES

Glacier Point Area

7:30 p.m. SUNSET AT GLACIER POINT. Enjoy the lengthened shadows in Yosemite Valley and the alpenglow on the Sierra high country. Meet at the **Geology Hut**.

8:00 p.m. CAMPFIRE AT BRIDALVEIL CREEK CAMPGROUND. An old-fashioned Ranger campfire program, complete with marshmallow roasting - if you bring them! **South of Loop C, south end of campground.**

Please allow 1¼ hours driving time from Wawona and Yosemite Valley to Glacier Point.

Wawona-Pioneer History Center

9:00 a.m. to 5:00 p.m. LIVING HISTORY AT THE PIONEER YOSEMITE HISTORY CENTER (Wednesday-Sunday only). Explore the vital years between 1864 and 1916, when the national park concept evolved from an idea to reality, by talking with park interpreters, portraying people involved in Yosemite's formative years. Discuss California's efforts to protect Yosemite Valley with the first State Guardian. Debate the need to protect the high country with homesteaders. Face the Cavalry's and civilian rangers' problems in enforcing park regulations. Become part of Yosemite's past.

10:00 a.m. to 4:00 p.m. STAGE RIDES ACROSS COVERED BRIDGE (Wednesday-Sunday only). Experience the jostling, dust and excitement of early Park stage travel. **Pioneer Yosemite History Center.** Cost: \$1.00

11:00 a.m. to 2:00 p.m. HILL'S STUDIO (Wednesday-Sunday only). An exhibit of historic Yosemite paintings and photographs in an early park artist's studio commemorates the role of landscape artists and photographers in the park and conservation movement. **Located on the Wawona Hotel grounds.**

8:00 p.m. WAWONA CAMPGROUND CAMPFIRE PROGRAM. Join the Ranger for a one-hour fireside program on various topics of interest about Yosemite. Meet in the **Wawona Campground Amphitheater.**

Allow 1 hour driving time from Yosemite Valley to Wawona.

Mariposa Grove

10:00 a.m. and 2:00 p.m. WALK AMONG THE GIANTS. These enormous trees have been waiting for you for over 2,000 years! Discover the history and ecology of the Giant Sequoias, largest of all living things! Two hours. Meet at the **Tram boarding area.** Tram costs \$2.50 per adult, \$1.25 per child.

Please allow 1¼ hours driving time to the Mariposa Grove from Yosemite Valley.

SPECIAL ACTIVITIES

MONDAY

Glacier Point Area

10:00 a.m. MC GURK'S MEADOW. Discover the pioneer cabin on the edge of a flower-filled meadow. History almost comes alive! 1½ miles,

3 hours. Meet at the **Bridalveil Creek Campground phone booth.**

10:00 a.m. TAFT POINT AND FISSURES. Walk through meadow and forest to an impressive view of Yosemite Valley. Easy 2.2-mile (3.5 km) 2-hour round trip walk. Meet at the **Taft Point/Sentinel Dome parking area, Glacier Point Road.**

2:00 p.m. SENTINEL DOME TREK. Enjoy the panorama from the top. 2.2-mile, 2½-hour walk. Meet at the **Taft Point/Sentinel Dome Park Area, Glacier Point Road.**

6:30 p.m. FULL MOON AT SENTINEL DOME (August 22 only). See the moon rise and the alpenglow on the Sierra high country. Bring a flashlight and jacket. 2.2 miles, 2½ hours. Meet at the **Sentinel Dome/Taft Point Parking Area, Glacier Point Road.**

7:30 p.m. SUNSET AT GLACIER POINT (except August 22). Enjoy the lengthened shadows in Yosemite Valley and the alpenglow on the Sierra high country. Meet at the **Geology Hut.**

8:00 p.m. CAMPFIRE AT BRIDALVEIL CREEK CAMPGROUND. An old-fashioned Ranger campfire program, complete with marshmallow roasting - if you bring them! **South of Loop C, south end of campground.**

Please allow 1¼ hours driving time from Wawona and Yosemite Valley to Glacier Point.

Wawona-Pioneer History Center

10:30 a.m., 1:30 p.m., 3:30 p.m. YOSEMITE'S HISTORY. Join the Ranger-led tour of historic buildings that commemorate the people who pioneered the national park idea. One hour. Meet at the **Artist's Cabin across the covered bridge at the History Center.**

2:00 p.m. BEYOND THE BANK. Stroll along the river's edge with Ranger Bethelena Weston and look at the ecology of the waters of Yosemite. Sneakers recommended. Bring a towel if you want to wiggle your toes in the cool water. Meet at the **Wawona Campground Amphitheater in Loop B.** 3 hours.

8:00 p.m. NIGHT PROWL. Explore Wawona as the evening light wanes, and learn how the animals have adapted to darkness. Children under ten must be accompanied by an adult. One mile, 1½ hours. Meet on the **Wawona Hotel porch.**

8:00 p.m. WAWONA CAMPGROUND CAMPFIRE PROGRAM. Join the Ranger for a one-hour fireside program on various topics of interest about Yosemite. Meet in the **Wawona Campground Amphitheater.**

Allow 1 hour driving time from Yosemite Valley to Wawona.

Mariposa Grove

10:00 a.m. and 2:00 p.m. WALK AMONG THE GIANTS. These enormous trees have been waiting for you for over 2,000 years! Discover the history and ecology of the giant sequoias, largest of all living things. Two hours. Meet at the **Tram boarding area.** Tram costs \$2.50 per adult, \$1.25 per child.

Please allow 1¼ hours driving time to the Mariposa Grove from Yosemite Valley.

TUESDAY

Glacier Point Area

10:30 a.m. PANORAMA TRAIL HIKE. A moderately strenuous 8.6-mile hike from Glacier Point to Yosemite Valley via Nevada Falls. Spectacular views of the Valley and Illilouette Falls. Bring a hearty lunch, water and well broken-in shoes. Meet at the **Snack Shop area at Glacier Point.** 6-8 hours. Carpool or ride the Curry bus since the hike ends in the Valley.

2:00 p.m. SENTINEL DOME TREK. Enjoy the panorama from the top! 2.2-mile, 2½-hour walk. Meet at the **Taft Point/Sentinel Dome Park Area, Glacier Point Road.**

7:30 p.m. SUNSET AT GLACIER POINT. Enjoy the lengthened shadows in Yosemite Valley and the alpenglow on the Sierra high country. Meet at the **Geology Hut.**

8:00 p.m. CAMPFIRE AT BRIDALVEIL CREEK CAMPGROUND. An old-fashioned Ranger campfire program, complete with marshmallow roasting - if you bring them! **South of Loop C, south end of campground.**

Please allow 1¼ hours driving time from Wawona and Yosemite Valley to Glacier Point.

Wawona-Pioneer History Center

10:30 a.m., 1:30 p.m., 3:30 p.m. YOSEMITE'S HISTORY. Join the Ranger-led tour of historic buildings that commemorate the people who pioneered the national park idea. One hour. Meet at the **Artist's Cabin across the covered bridge at the History Center.**

8:00 p.m. WAWONA CAMPGROUND CAMPFIRE PROGRAM. Join the Ranger for a one-hour fireside program on various topics of interest about Yosemite. Meet in the **Wawona Campground Amphitheater.**

Allow 1 hour driving time from Yosemite Valley to Wawona.

Mariposa Grove

10:00 a.m. and 2:00 p.m. WALK AMONG THE GIANTS. These enormous trees have been waiting for you for over 2,000 years! Discover the history and ecology of the giant sequoias, largest of all living things. Two hours. Meet at the **Tram boarding area.** Tram costs \$2.50 per adult, \$1.25 per child.

Please allow 1¼ hours driving time to the Mariposa Grove from Yosemite Valley

WEDNESDAY

Glacier Point Area

2:00 p.m. WANDERING IN THE WESTFALL (except August 31). Follow the old Glacier Point stage road and the Park's oldest horse trail. The meadow may be wet; wear appropriate shoes. Two miles, 2½ hours. Meet at the **Bridalveil Creek Campground phone booth.**

2:00 p.m. SENTINEL DOME TREK. Enjoy the panorama from the top! 2.2-mile, 2½-hour walk. Meet at the **Taft Point/Sentinel Dome Park Area, Glacier Point Road.**

7:30 p.m. SUNSET AT GLACIER POINT. Enjoy the lengthened shadows in Yosemite Valley and the alpenglow on the Sierra high country. Meet at the **Geology Hut.**

WAWONA VISITOR ACTIVITIES

This schedule of visitor activities covers the period of August 1 through September 5, 1983

Wednesday continued

8:00 p.m. CAMPFIRE AT BRIDALVEIL CREEK CAMPGROUND. An old-fashioned Ranger campfire program, complete with marshmallow roasting - if you bring them! **South of Loop C, south end of campground.**

Please allow 1¼ hours driving time from Wawona and Yosemite Valley to Glacier Point.

Wawona-Pioneer History Center.

9:00 a.m. to 5:00 p.m. LIVING HISTORY AT THE PIONEER YOSEMITE HISTORY CENTER. See **Daily Activities** section for description.

10:00 a.m. to 4:00 p.m. STAGE RIDES ACROSS COVERED BRIDGE. Experience the jostling, and excitement of early Park stage travel. **Pioneer Yosemite History Center.** Cost: \$1.00

8:00 p.m. WISHING ON A STAR. Explore the mysteries of the night sky and discover constellations, sky legends, meteors, and more. Bring a flashlight, jacket, something to lie on, and binoculars (if you have them). 1½ hours. Meet on the **Wawona Hotel porch.**

8:00 p.m. WAWONA CAMPGROUND CAMPFIRE PROGRAM. Join the Ranger for a one-hour fireside program on various topics of interest about Yosemite. Meet in the **Wawona Campground Amphitheater.**

Allow 1 hour driving time from Yosemite Valley to Wawona.

Mariposa Grove

10:00 a.m. and 2:00 p.m. WALK AMONG THE GIANTS. These enormous trees have been waiting for you for over 2,000 years! Discover the history and ecology of the giant sequoias, largest of all living things. Two hours. Meet at the **Tram boarding area.** Tram costs \$2.50 per adult, \$1.25 per child.

Please allow 1¼ hours driving time to the Mariposa Grove from Yosemite Valley.

THURSDAY

Glacier Point Area

10:00 a.m. TAFT POINT AND FISSURES. Walk through meadow and forest to an impressive view of Yosemite Valley. Easy 2.2-mile (3.5 km), 2-hour round trip walk. Meet at the **Taft Point/Sentinel Dome Parking Area, Glacier Point Road.**

2:00 p.m. SENTINEL DOME TREK (except September 1). Enjoy the panorama from the top! 2.2-mile, 2½-hour walk. Meet at the **Taft Point/Sentinel Dome Park Area, Glacier Point Road.**

7:30 p.m. SUNSET AT GLACIER POINT. Enjoy the lengthened shadows in Yosemite Valley and the alpenglow on the Sierra high country. Meet at the **Geology Hut.**

8:00 p.m. CAMPFIRE AT BRIDALVEIL CREEK CAMPGROUND. An old-fashioned Ranger campfire program, complete with marshmallow roasting - if you bring them! **South of Loop C, south end of campground.**

Please allow 1¼ hours driving time from Wawona and Yosemite Valley to Glacier Point.

Wawona-Pioneer History Center

7:00 a.m. FEATHERED FRIENDS. Catch Wawona's birdlife during the cool morning feeding hours. One mile, two hours. Meet at the **Wawona Store.**

9:00 a.m. "RANGER'S CHOICE" HIKE. Ever wonder where the Rangers hike on their days off? Join Ranger Paul Tidwell for a moderate all-day hike to his favorite destinations: the rim of Yosemite Valley for the views, the quiet stillness of a Sequoia grove, or up through lush meadows to an alpine lake. Bring a hearty lunch, water, and well broken-in shoes. 6-10 miles, 4-6 hours. For details call 375-6321, **8:00 a.m. to 5:00 p.m.**

9:00 a.m. to 5:00 p.m. LIVING HISTORY AT THE PIONEER YOSEMITE HISTORY CENTER. See **Daily Activities** section for description.

10:00 a.m. to 4:00 p.m. STAGE RIDES ACROSS COVERED BRIDGE. Experience the jostling, dust and excitement of early Park stage travel. **Pioneer Yosemite History Center.** Cost: \$1.00.

8:00 p.m. WAWONA CAMPGROUND CAMPFIRE PROGRAM. Join the Ranger for a one-hour fireside program on various topics of interest about Yosemite. Meet in the **Wawona Campground Amphitheater.**

Allow 1 hour driving time from Yosemite Valley to Wawona.

Mariposa Grove

10:00 a.m. and 2:00 p.m. WALK AMONG THE GIANTS. These enormous trees have been waiting for you for over 2,000 years! Discover the history and ecology of the giant sequoias, largest of all living things. Two hours. Meet at the **Tram boarding area.** Trams costs \$2.50 per adult, \$1.25 per child.

Please allow 1¼ hours driving time to the Mariposa Grove from Yosemite Valley.

FRIDAY

Glacier Point Area

10:00 a.m. MC GURK'S MEADOW. Discover a pioneer cabin on the edge of a flower-filled meadow. History almost comes alive! 1½ miles, 3 hours. Meet at the **Bridalveil Creek Campground phone booth.**

10:30 a.m. YOSEMITE'S HIDDEN WONDERS. Discover a different perspective of Half Dome and view the seldom seen Illioulte Falls. Bring a lunch and hike the 4.4-mile round trip with Ranger Steve Anderson, or continue on down to Yosemite Valley. 4 hours. Meet at the **Glacier Point Snack Shop area.**

2:00 p.m. SENTINEL DOME TREK. Enjoy the panorama from the top! 2.2-mile, 2½-hour walk. Meet at the **Sentinel Dome Parking Area, Glacier Point road.**

7:30 p.m. SUNSET AT GLACIER POINT. Enjoy the lengthened shadows in Yosemite Valley and the alpenglow on the Sierra high country. Meet at the **Geology Hut.**

8:00 p.m. CAMPFIRE AT BRIDALVEIL CREEK CAMPGROUND. An old-fashioned Ranger campfire program, complete with marshmallow roasting - if you bring them! **South of Loop C, south end of campground.**

Please allow 1¼ hours driving time from Wawona and Yosemite Valley to Glacier Point.

Wawona-Pioneer History Center

9:00 a.m. MEADOW LOOP WALK. Join Ranger Kris Fister for a lovely walk around the Wawona Meadow Loop. A fine introduction to Sierra forest and meadow ecology. Three miles, three hours. Meet at the **Wawona Store.**

9:00 a.m. to 5:00 p.m. LIVING HISTORY AT THE PIONEER YOSEMITE HISTORY CENTER. See **Daily Activities** section for description.

10:00 a.m. to 4:00 p.m. STAGE RIDES ACROSS COVERED BRIDGE. Experience the jostling, dust and excitement of early Park stage travel. **Pioneer Yosemite History Center.** Cost: \$1.00

8:00 p.m. MAN, MUSIC AND NATURE. Join Ranger Paul Tidwell for a contemplative look at the sights and sounds of the Yosemite evening. An easy one-mile, 1½-hour walk. Bring a warm jacket. Meet on the **Wawona Hotel porch.**

8:00 p.m. WAWONA CAMPGROUND CAMPFIRE PROGRAM. Join the Ranger for a one-hour fireside program on various topics of interest about Yosemite. Meet in the **Wawona Campground Amphitheater.**

Allow 1 hour driving time from Yosemite Valley to Wawona.

Mariposa Grove

10:00 a.m. and 2:00 p.m. WALK AMONG THE GIANTS. These enormous trees have been waiting for you for over 2,000 years! Discover the history and ecology of the giant sequoias, largest of all living things. Two hours. Meet at the **Tram boarding area.** Tram costs \$2.50 per adult, \$1.25 per child.

Please allow 1¼ hours driving time to the Mariposa Grove from Yosemite Valley.

SATURDAY

Glacier Point Area

10:00 a.m. TAFT POINT AND FISSURES. Walk through meadow and forest to an impressive view of Yosemite Valley. East 2.2-mile (3.5 km), 2-hour round-trip walk. Meet at the **Taft Point/Sentinel Dome parking area, Glacier Point Road.**

2:00 p.m. SENTINEL DOME TREK. Enjoy the panorama from the top! 2.2-mile, 2½-hour walk. Meet at the **Taft Point/Sentinel Dome Parking Area, Glacier Point road.**

7:30 p.m. SUNSET AT GLACIER POINT. Enjoy the lengthened shadows in Yosemite Valley and the alpenglow on the Sierra high country. Meet at the **Geology Hut.**

9:00 p.m. STAR PARTY. After the Sunset Program, join Ranger Dave Balogh for a session of star gazing through the 12½-inch telescope and hear constellation lore to the thunder of distant waterfalls. Meet at the **Snack Shop area at Glacier Point.** Two hours.

8:00 p.m. CAMPFIRE AT BRIDALVEIL CREEK CAMPGROUND. An old-fashioned Ranger campfire program, complete with marshmallow roasting - if you bring them! **South of Loop C, south end of campground.**

WAWONA VISITOR ACTIVITIES

This schedule of visitor activities covers the period of August 1 through September 5, 1983

Saturday continued

Please allow 1 1/4 hours driving time from Wawona and Yosemite Valley to Glacier Point.

Wawona-Pioneer History Center

9:00 a.m. to 5:00 p.m. **LIVING HISTORY AT THE PIONEER YOSEMITE HISTORY CENTER.** See *Daily Activities* section for description.

10:00 a.m. to 4:00 p.m. **STAGE RIDES ACROSS COVERED BRIDGE.** Experience the jostling, dust and excitement of early Park stage travel. **Pioneer Yosemite History Center.** Cost: \$1.00.

8:00 p.m. **WAWONA CAMPGROUND CAMPFIRE PROGRAM.** Join the Ranger for a one-hour fireside program on various topics of interest about Yosemite. Meet in the **Wawona Campground Amphitheater.**

Allow 1 hour driving time from Yosemite Valley to Wawona.

Mariposa Grove.

10:00 a.m. and 2:00 p.m. **WALK AMONG THE GIANTS.** These enormous trees have been waiting for you for over 2,000 years! Discover the history and ecology of the giant sequoias, largest of all living things. Two hours. Meet at the **Tram boarding area.** Tram costs \$2.50 per adult, \$1.25 per child.

2:00 p.m. **CHILDREN'S GROVE WALK.** A special introduction to the Big Trees for children ages 5-12. 1 1/2 hours. Meet at the **Mariposa Grove Tram boarding area.**

Please allow 1 1/4 hours driving time to the Mariposa Grove from Yosemite Valley.

SUNDAY

Glacier Point Area

10:00 a.m. **GONE FISHING.** Join Ranger Dave Balogh for a hike to Illilouette Creek and then try to catch your dinner! Fishing results not guaranteed, but a good time is! Bring lunch, fishing gear, camera and towel. Four miles, 1200 feet elevation change, four hours unless you wish to spend the day. Meet at the **Snack Shop area at Glacier Point.**

2:00 p.m. **SENTINEL DOME TREK.** Enjoy the panorama from the top! 2.2-mile, 2 1/2-hour walk. Meet at the **Taft Point/Sentinel Dome Park Area, Glacier Point Road.**

2:00 p.m. **WANDERING IN THE WESTFALL.** Follow the old Glacier Point stage road and the Park's oldest horse trail. The meadow may be wet; wear appropriate shoes. Two miles, 2 1/2 hours. Meet at the **Bridalveil Creek Campground phone booth.**

7:30 p.m. **SUNSET AT GLACIER POINT.** Enjoy the lengthened shadows in Yosemite Valley and the alpenglow on the Sierra high country. Meet at the **Geology Hut.**

8:00 p.m. **CAMPFIRE AT BRIDALVEIL CREEK CAMPGROUND.** An old-fashioned Ranger campfire program, complete with marshmallow roasting - if you bring them! **South of Loop C, south end of campground.**

Please allow 1 1/4 hours driving time from Wawona and Yosemite Valley to Glacier Point.

Wawona-Pioneer History Center

9:00 a.m. to 5:00 p.m. **LIVING HISTORY AT THE PIONEER YOSEMITE HISTORY CENTER.** See *Daily Activities* section for description.
10:00 a.m. to 4:00 p.m. **STAGE RIDES ACROSS COVERED BRIDGE.** Experience the jostling, dust and excitement of early Park stage travel. **Pioneer Yosemite History Center.** Cost: \$1.00.

7:00 p.m. **CHILDREN'S CAMPFIRE.** Join Mary Schoonover for an old-fashioned campfire with songs and stories especially for children. Parents welcome! Meet outside the Hodgdon Homestead cabin in the Pioneer Yosemite History Center. One hour.

8:00 p.m. **WAWONA CAMPGROUND CAMPFIRE PROGRAM.** Join the Ranger for a one-hour fireside program on various topics of interest about Yosemite. Meet in the **Wawona Campground Amphitheater.**

Allow 1 hour driving time from Yosemite Valley to Wawona.

Mariposa Grove

10:00 a.m. and 2:00 p.m. **WALK AMONG THE GIANTS.** These enormous trees have been waiting for you for over 2,000 years! Discover the history and ecology of the giant sequoias, largest of all living things. Two hours. Meet at the **Tram boarding area.** Tram costs \$2.50 per adult, \$1.25 per children.

Please allow 1 1/4 hours driving time to the Mariposa Grove from Yosemite Valley.

Indian Village Scene of Cultural Demonstrations

Visitors to Yosemite's Indian Village, located directly behind the Visitor Center in Yosemite Valley, will be greeted by women wearing long, flowing calico gowns of the 1870's. Stepping into the Village will be like stepping into the past, for here the participants in the Indian Cultural Program will be living the life of their ancestors of the 1870's.

The 1870's was a period of intensive change for the Indian people of Yosemite, a time when the best of their traditional culture was blended with the best of the culture of the white men who were living in Yosemite Valley.

Last year, an intensive research program was mounted by the National Park Service which has resulted in this summer's Indian Cultural Program being one of the most authentic re-creations of American Indian life in the country.

Every item in the Village has been meticulously researched, combining to portray an accurate picture of Yosemite Indian life in the 1870's. The cloth used in creating the clothing was found only after a long search - some of it was printed from the same plates used in

the 1870's, while some was hand-woven to exacting specifications provided by the research staff.

Women in the Village work at such tasks as pounding acorns into flour or weaving baskets, while others may be fashioning intricate beaded yokes, a newly acquired item of dress by Yosemite women in the 1870's. Visitors are welcome to sit and visit with the Village dwellers and try the foods of their ancestors, while hearing some of the legends and lore that Yosemite's first people have passed down to the present day.

Yosemite Falls Trail

The Yosemite Falls Trail, seriously damaged by two major rockslides within the past 2 1/2 years, is now open to the top of the Upper Fall before 8:00 a.m. and after 4:30 p.m. Monday through Friday. On Saturdays and Sundays the trail is open at all hours. Visitors may hike as far as the barricade above Columbia Point at any time.



Services for Disabled Visitors

The National Park Service, in cooperation with the Yosemite Park and Curry Co., has undertaken a program to meet the needs of disabled visitors to Yosemite more effectively. The facilities and services that have been developed to help disabled people enjoy Yosemite are described in a general information packet available at park entrance stations and visitor centers.

Mariposa Grove Tram Operates Daily

The open-air tram which runs through the Mariposa Grove of Giant Sequoias operates daily between 8:00 a.m. and 7:00 p.m. The tour starts at the tram boarding area in the Lower Grove; there is a charge of \$2.50 for adults and \$1.25 for children under nine years.

Backcountry Hiking Tips

A record snowpack, up to 200% of normal, still covers some of the high country. Backcountry users will need to take some special precautions for their own safety and to minimize their impact on the mountains. Wilderness areas are particularly susceptible to damage during and just after snowmelt. Please follow these guidelines.

Tours of Yosemite Valley Offered

On each of the scenic tours described below, professional guides recount the fascinating history of Yosemite.

The tours depart daily from the Ahwahnee Hotel, Curry Village, Yosemite Lodge and Yosemite Village. Please reserve for all tours at the Tour Center at hotel units.

Valley Floor Tour - This two-hour guided tour operates all year and provides views of Half Dome, El Capitan, Bridalveil Fall, Valley View and Yosemite Falls

Mariposa Grove Tour - This spectacular ride goes into the world famous Mariposa Grove of Big Trees. Some of the trees there are more than 2,500 years old. This 6-hour tour stops for lunch at the Wawona Hotel.

Glacier Point Tour - This four-hour tour makes a scenic expedition through Yosemite Valley to Glacier Point — 3,205 feet above. There are breathtaking 270-degree panoramic views of Yosemite National Park and the Sierra beyond. Special one-way rates for hikers to Glacier Point or the back country are available.

The Grand Tour - This is a full-day's outing combining the spectacular Big Trees and Glacier Point tours. The tour stops at the historic Wawona Hotel for a buffet lunch.

For more information call 372-1240.

Most areas above 9500' will be wet; please stay on the trails even if they are water covered. Walk **well away** from the trail if you don't walk on it.

Snowy conditions will probably exist through August in the higher elevations, and hikers should be aware that some trails may be covered with snow and may be difficult to follow. Hiking in the afternoons can be difficult, and steep, snow-covered slopes can be dangerous.

Creek crossings may be extremely hazardous with high runoff. When crossing an unbridged creek, look for a natural bridge such as logs or rocks.

Hikers should use extreme care in crossing unbridged creeks or streams in the backcountry. The following techniques are suggested to make crossings less hazardous. Unbuckle the waist strap of your pack and use a long stick or pole like a third leg for stability. If you are with a group, cross together holding on to each other. Do not tie yourself into "safety" ropes — they can drown you.

Trails at lower elevations will be receiving high use well into the summer, and hikers planning to use those areas are advised to pick up their wilderness permit the day before their trailhead departure to assure access. At least 50% of each trailhead's quota is available on a first come first served basis, up to 24 hours in advance (reservations are accepted by mail only between February 1 and May 31 only). Permits are available at the Yosemite Valley Visitor Center, Wawona Ranger Station, Big Oak Flat Visitor Center, and at the Tuolumne Meadows Wilderness Permit Kiosk.

Photo Express

Yosemite Photo Express can help make one's visit memorable by providing color film processing before leaving the park. Leave film at one of the many locations, and in three hours or fewer color prints are ready.

Color print and disc film are processed for \$1.95 per roll, plus 29 cents per print. Color reprints from color negatives are 39 cents per print. E-6 process slide film (such as Ektachrome) is processed for \$3.60 per 20-exposure roll or \$5.85 per 36-exposure roll.

Under a special summer offer, those having 3 rolls of color film processed will receive a photo album as a bonus.

Lost Something? Found Something?

If you have lost or found something during your stay in Yosemite, please call 372-4461, ext. 286 for assistance. If this doesn't prove satisfactory, you may stop by the front desk of any of the Park's visitor accommodations, or contact a Park Ranger.

Rental Bicycles Available

Standard bicycles are rented by the hour at Curry Village and Yosemite Lodge. Bikes range in all sizes; child-carriers and day packs are also available.

A pleasant cycling path follows the Happy Isles/Mirror Lake loop, where roads have been closed to automobiles. For those who wish to picnic, box lunches are available

and can be ordered at Yosemite Lodge or Curry Village Cafeterias, or at The Ahwahnee Front Desk.

Bike stands are open daily from 9 a.m. to 5 p.m. Full-day rates are available. Yosemite Lodge 372-1208; Curry Village 372-1200.

NEW Wildflower Poster, Waterfalls Book

A four-color poster, 34" by 22", showing 26 of Yosemite's best-known wildflowers is now available at \$6.95. It is the work of Walter Sydoriak, a local artist and botanist.

Also just off the press is a book on Yosemite's waterfalls and its remarkable geology. Called *GRANITE, WATER and LIGHT, THE WATERFALLS OF YOSEMITE*, the 48-page book was written by Michael Osborne, a Yosemite ranger and writer-photographer. The price is \$5.95.

Both the book and the poster are available at park shops and visitor centers. The two were published by the Yosemite Natural History Association, a park based non-profit organization.

**NOW
AVAILABLE**



RETAIL & FOOD SERVICES

Hours of Operation

Food Service and retail items are available at the facilities shown below.
Hours of operation are subject to change.

FOOD SERVICE

Yosemite Lodge

Cafeteria	
Breakfast	6:30 a.m. to 10:00 a.m.
Lunch	11:30 a.m. to 2:00 p.m.
Snack Service	2:00 p.m. to 3:45 p.m.
Dinner	4:30 p.m. to 8:00 p.m.
Pool Refreshment Stand	10:00 a.m. to 6:00 p.m.

Four Seasons Restaurant

Breakfast	7:00 a.m. to 11:30 a.m.
Dinner	5:00 p.m. to 10:00 p.m.

Mountain Room Broiler

Dinner	5:30 p.m. to 10:00 p.m.
--------	-------------------------

Mountain Room Bar	4:30 p.m. to 11:45 p.m.
-------------------	-------------------------

Yosemite Village

Degnan's Delicatessen	8:00 a.m. to 8:00 p.m.
Degnan's Fast Food	11:00 a.m. to 8:00 p.m.

Loft Restaurant

Breakfast	9:00 a.m. to 11:30 a.m.
Lunch	11:30 a.m. to 2:00 p.m.
Dinner	5:30 p.m. to 10:00 p.m.

Hamburger Stand	10:30 a.m. to 9:00 p.m.
-----------------	-------------------------

Ahwahnee Hotel

Breakfast	7:00 a.m. to 11:15 a.m.
Lunch	11:45 a.m. to 2:00 p.m.
Snack Service	2:00 p.m. to 5:00 p.m.
Dinner	5:45 p.m. to 8:30 p.m.

Note: Reservations required for dinner (call 372-1489).

Curry Village

Cafeteria	
Breakfast	7:00 a.m. to 10:00 a.m.
Dinner	5:00 p.m. to 8:00 p.m.
Hamburger Stand	10:00 a.m. to 8:00 p.m.
Cocktail Patio	4:30 p.m. to 10:00 p.m.

Happy Isles

Snack Stand	10:00 a.m. to 5:00 p.m.
-------------	-------------------------

Tuolumne Meadows

Grill	7:30 a.m. to 6:00 p.m.
Lodge Dining Room	
Breakfast	7:00 a.m. to 9:00 a.m.
Dinner	6:00 p.m. to 8:00 p.m.

Note: Reservations advised (call 372-1313).

White Wolf

Lodge Dining Room	
Breakfast	7:00 a.m. to 9:00 a.m.
Snack Service	Noon to 1:30 p.m.
Dinner	6:00 p.m. to 8:00 p.m.

Note: Reservations advised (call 372-1316).

Hotel Wawona

Dining Room	
Breakfast	7:30 a.m. to 9:30 a.m.
Buffet Lunch	Noon to 2:00 p.m.
Dinner	6:30 p.m. to 8:30 p.m.

Note: Reservations advised (call 372-1300).

Cocktail Service	6:00 p.m. to 10:00 p.m.
------------------	-------------------------

Glacier Point

Snack Stand	9:00 a.m. to 7:00 p.m.
-------------	------------------------

RETAIL SHOPS

Yosemite Lodge

Apparel Shop	8:00 a.m. to 10:00 p.m.
Gift Shop	8:00 a.m. to 10:00 p.m.
Indian Shop	8:00 a.m. to 10:00 p.m.

Yosemite Village

Village Store	8:00 a.m. to 10:00 p.m.
Sport Shop	9:00 a.m. to 9:00 p.m.
Degnan's Nature Crafts	9:00 a.m. to 8:00 p.m.

Ahwahnee Hotel

Gift Shop	8:30 a.m. to 10:00 p.m.
-----------	-------------------------

Curry Village

Mountain Shop	8:30 a.m. to 9:00 p.m.
Gift Shop	8:00 a.m. to 10:00 p.m.

Tuolumne Meadows

Grocery Store	8:00 a.m. to 7:00 p.m.
Mountain Shop	8:30 a.m. to 5:30 p.m.

Hotel Wawona

Golf Shop	8:00 a.m. to 6:00 p.m.
Pioneer Gift Shop	9:00 a.m. to 7:00 p.m.
Grocery Store	8:00 a.m. to 8:00 p.m.

Crane Flat

Grocery Store	9:00 a.m. to 6:00 p.m.
---------------	------------------------

Big Trees

Gift Shop	9:00 a.m. to 6:00 p.m.
-----------	------------------------

Glacier Point

Gift Shop	9:00 a.m. to 7:00 p.m.
-----------	------------------------

Learn To Climb

The Yosemite Mountaineering School has earned a reputation for excellence in rock-climbing instruction and is recommended for learning new skills or sharpening old ones.

For the beginner, a basic lesson includes all the elements of simple rock-climbing. A hands-on experience provides learning about equipment, correct use of hand-and-foot holds, belays and rappels. Intermediate I and II lessons are also available, featuring the reinforcement of fundamentals and more challenging climbs.

Classes start at 8:30 a.m. daily. Reservations and further information are available at the Yosemite Mountaineering School located in Tuolumne Meadows. For more information call 372-1335.

Floating Through The Valley

The Merced River is open to rafting for a limited time, so come join in the fun! A leisurely float down the river from Stoneman Bridge, near Curry Village, to Devil's Elbow at the base of El Capitan provides spectacular views of the Valley not visible elsewhere.

Rafts accommodating 3 to 5 people are available for rent at Curry Village from 9 a.m. to 4 p.m. daily. A charge of \$8.25 per person (minimum 2-person charge) includes raft, life jackets, paddles and return shuttle from Devil's Elbow to Curry Village.

The 4½-mile float takes about 2 hours without stops. Rental rafts must be returned to Curry Village by 6:00 p.m.

The U.S. Coast Guard requires that all persons rafting must wear a life jacket at all times. Children under 12 years old must be accompanied by an adult.

RELIGIOUS SERVICES

Through September 4, 1983

Chapel 300 yards west of Sentinel Bridge shuttle bus stop
Visitor Center Park Headquarters in Yosemite Village
Church Bowl between Yosemite Village and the Ahwahnee

CATHOLIC MASSES

Our Lady of the Snows Parish

Father Rod L. Craig, Administrator (209) 372-4729
Confessions before Masses

Yosemite Valley

Saturday, 5:00 p.m. Church Bowl
 Sunday, 8:00 a.m. and 10:00 a.m. Visitor Center, West Auditorium
 Weekdays (Monday, Tuesday, Wednesday), 5:30 p.m. Chapel
 Holy Days, 5:30 p.m. Chapel

El Portal

Sunday, 5:00 p.m. Community Chapel

Wawona

Saturday, 7:30 p.m. Schoolhouse

PROTESTANT SERVICES

Reverend John Cohron Davis, Resident Pastor (209) 372-4885

Yosemite Valley

Sunday, 9:00 a.m.,
 Service of Worship Lower River Campground Amphitheater
 Sunday, 9:00 a.m.,
 Service of Worship Lower Pines Campground Amphitheater
 Sunday, 9:30 a.m., Service of Worship Chapel
 Sunday, 9:30 a.m., Church School Chapel
 Sunday, 6:00 p.m., Bible Study Chapel
 Thursday, 7:00 p.m., Bible Study (June 2 - July 21) Chapel
 Thursday, 8:30 p.m., Christian Films (July 28 - September 1) Chapel

Women's Aglow

Last Monday of each month
 12:00 noon Girl's Club near Visitor Center
 (For additional information, contact Jean Williams at 372-4298)

Wawona

Sunday, 8:30 a.m., Service of Worship .. Campground Amphitheater
 Sunday, 7:00 p.m., Service of Worship Schoolhouse

Tuolumne Meadows

Sunday, 10:00 a.m., Service of Worship Dana Campfire Circle

WORSHIP WALKS

Yosemite Valley

Wednesday and Saturday, 7:00 to 8:00 p.m. meet at the Chapel

SOUTHERN BAPTIST SERVICES

Reverend Bill Sims (209) 379-2428
 Sunday, 10:30 a.m., Service of Worship .. Lower River Amphitheater
 Sunday, 10:30 a.m., Children's Church .. Lower River Amphitheater
 Sunday, 8:00 p.m., Service of Worship Chapel

LUTHERAN

Yosemite Valley

Sunday, 11:00 a.m., Service of Worship Chapel

SEVENTH DAY ADVENTIST

Yosemite Valley

Saturday, 10:00 a.m., Sabbath School Church Bowl
 Saturday, 11:00 a.m., Church Service Church Bowl

JEWISH SERVICES

Yosemite Valley

Friday, 8:00 p.m. (beginning June 24) Chapel

MORMON SERVICES

Yosemite Valley

Sunday, 1:00 p.m., Sacrament Meeting Chapel
 Sunday, 2:00 p.m., Priesthood Meeting Chapel

CHURCH OF CHRIST

El Portal

14 miles from Yosemite Valley, Highway 140 379-2493
 Sunday, 9:00 a.m., Bible Study Old School House
 Sunday, 9:50 a.m., Worship Service Old School House
 Sunday, 6:30 p.m., Worship Service Old School House
 Wednesday, 7:30 p.m., Bible Study Old School House

The Yosemite Guide

Published by the Yosemite Natural History Association
 for Park visitors, in cooperation with the National Park
 Service and the Yosemite Park & Curry Co.

SERVICES IN WAWONA AND YOSEMITE WEST

CAMP CHILHUALNA: Housekeeping cottages, one to three bedrooms. 375-6295

THE REDWOODS: Completely furnished homes, one to four bedrooms, fireplaces. For reservations 375-6256

THE REDWOOD INN RESTAURANT: Breakfast 8:00 to 10:00 a.m., Dinner 5:30 to 8:30 p.m. (closed Tuesdays). Dinner reservations advised 375-6369

FROST SHOP: Open Wednesday through Monday, 11:00 a.m. to 8:00 p.m. Sandwiches, hamburgers, ice cream. For more information 375-6369

PINE TREE MARKET: Groceries, meats, ice, gas, hot sandwiches, firewood, spirits. Open 8:00 a.m. to 8:00 p.m. 375-6343

WAWONA STORE: Groceries, meats, firewood, spirits, etc. 8:00 a.m. to 8:00 p.m. For more information 372-1320

WAWONA SERVICE STATION: Gas, tires, minor repairs, towing, etc. Open 8:00 a.m. to 8:00 p.m. 372-1315

WAWONA HOTEL: Breakfast 7:00 to 9:30 a.m., Buffet Lunch 12:00 to 1:30 p.m., Dinner 6:00 to 8:30 p.m. Dinner reservations required. For accommodations, call 372-1300

YOSEMITE WEST: Condominiums, off Route 41, near Chinquapin. Lodgings daily, weekly. For reservations .. 372-4711

YOSEMITE WEST: Housekeeping cottages complete. One- and two-bedroom units. By day or week. For reservations call 372-4567 or 375-6286

MEDICAL/DENTAL SERVICES

Yosemite Medical Group office hours are 10:00 a.m. to 12:00 p.m. and 2:00 to 5:30 p.m., Monday through Friday; 10:00 a.m. to 12:00 p.m. on Saturday.

For appointments, call
 372-4637

Dental office hours are 8:30 a.m. to 12:00 p.m., and 1:30 to 4:30 p.m., Monday through Friday.

Phone 372-4200.

WEATHER/ROAD CONDITIONS

For recorded messages on weather/roads in:

Yosemite (209) 372-4605

California Natl. Parks (415) 556-6030

Western Natl. Parks .. (213) 719-9488

For live, general information on National Parks, call (213) 888-3770

TTY only, call Monday through Friday, 8:00 a.m. to 4:30 p.m. (213) 688-3081

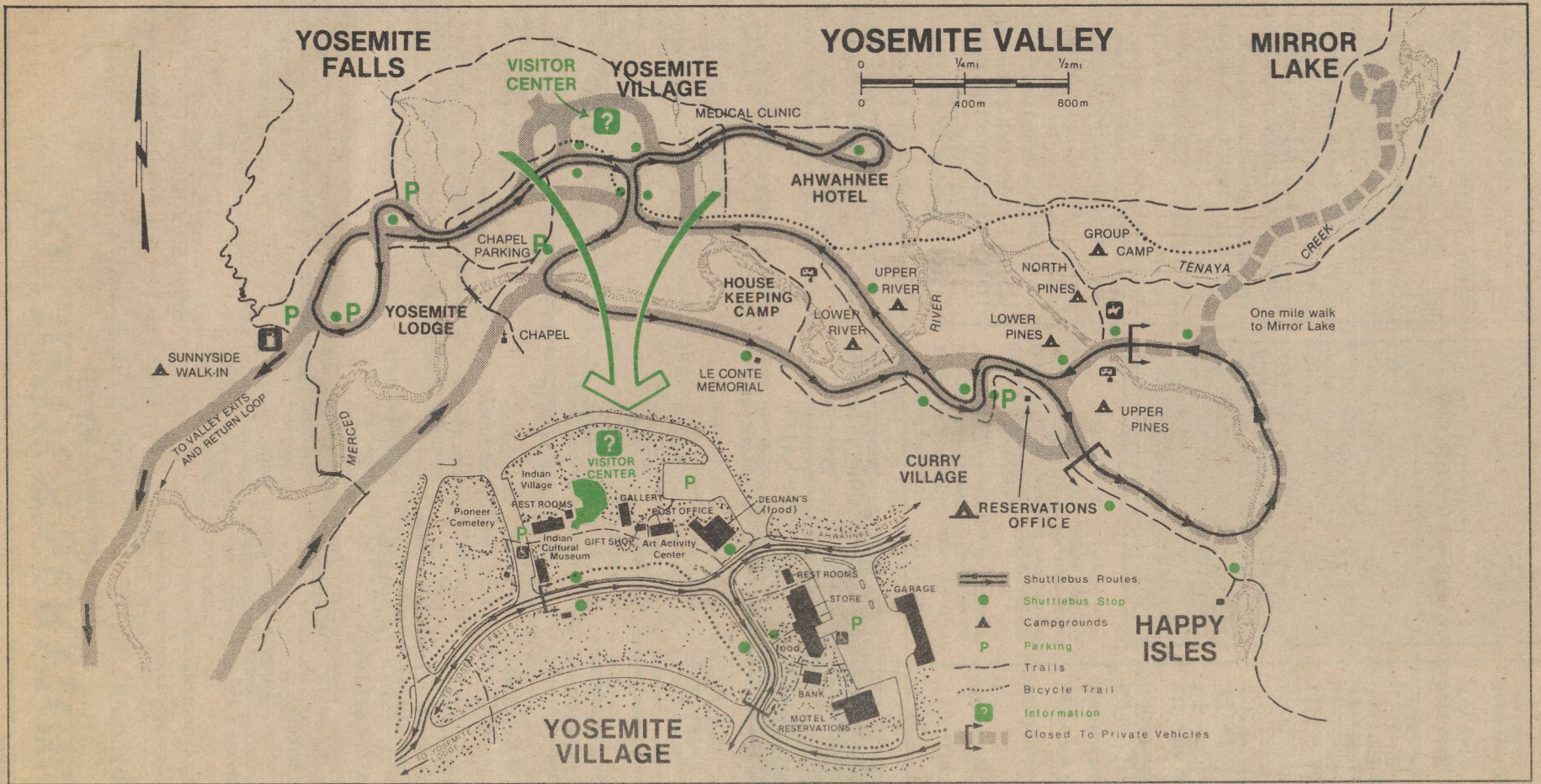
TTY

As an aid to those with hearing impairment, the National Park Service and Yosemite Park and Curry Company have installed TTY phones, which enable deaf people with their own TTYs to call the Park directly.

Park Service information (TTY only) (209) 372-4726

Road/Weather conditions (213) 688-3081

Room reservations ... (209) 372-4512



Shuttlebus Schedule

Valley shuttlebuses will make the stops listed from 9:00 a.m. to 10:00 p.m. daily at ten-minute intervals. Bus service to Happy Isles, Mirror Lake Junction and the Yosemite Park and Curry Company Stables operates from 9:00 a.m. to 7:00 p.m.

Weather and road conditions permitting, tram service at the Mariposa Grove of Big Trees runs from 8:00 a.m. to 6:00 p.m. through September 5.

- Village Mall
- Park Headquarters/ Visitor Center
- Yosemite Falls
- Yosemite Lodge
- Ahwahnee Hotel
- Sentinel Bridge
- Housekeeping Camp

- Curry Village
- Curry Parking Lot
- Pines Campgrounds
- Happy Isles
- Mirror Lake Junction
- Stables
- Rivers Campgrounds