



Experience
Your
America

Yosemite Today

November 5 -
December 2, 2002

Yosemite National Park

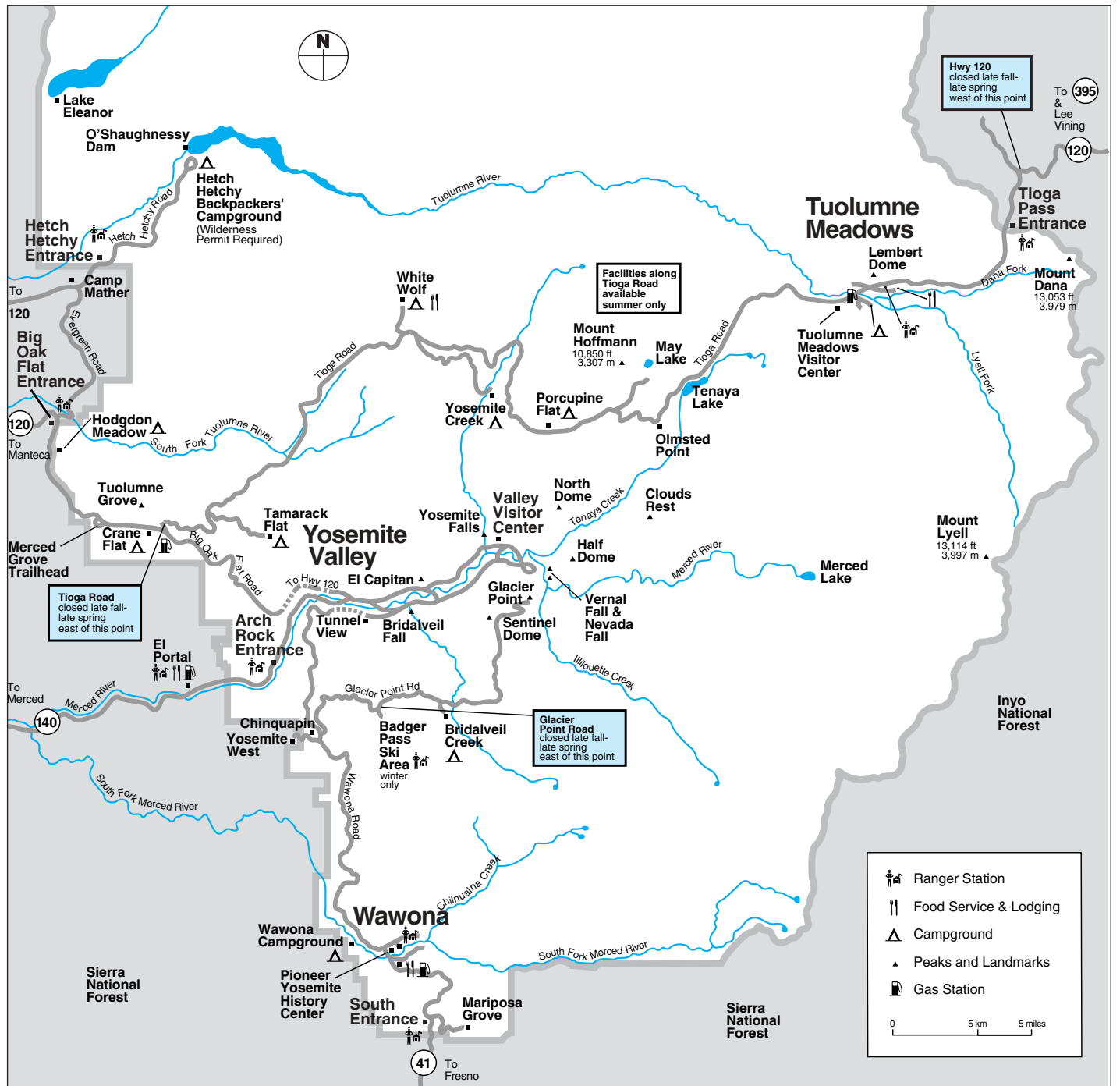
Important Phone Numbers

Emergency 911 (from hotel room 9-911)

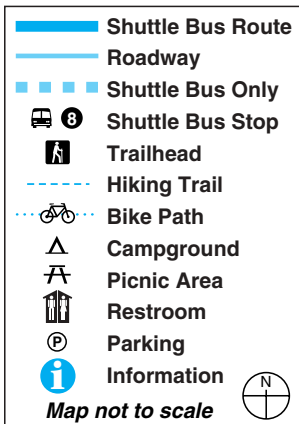
Road and Weather/General Park Information 209/372-0200

Campground Reservations 800/436-7275

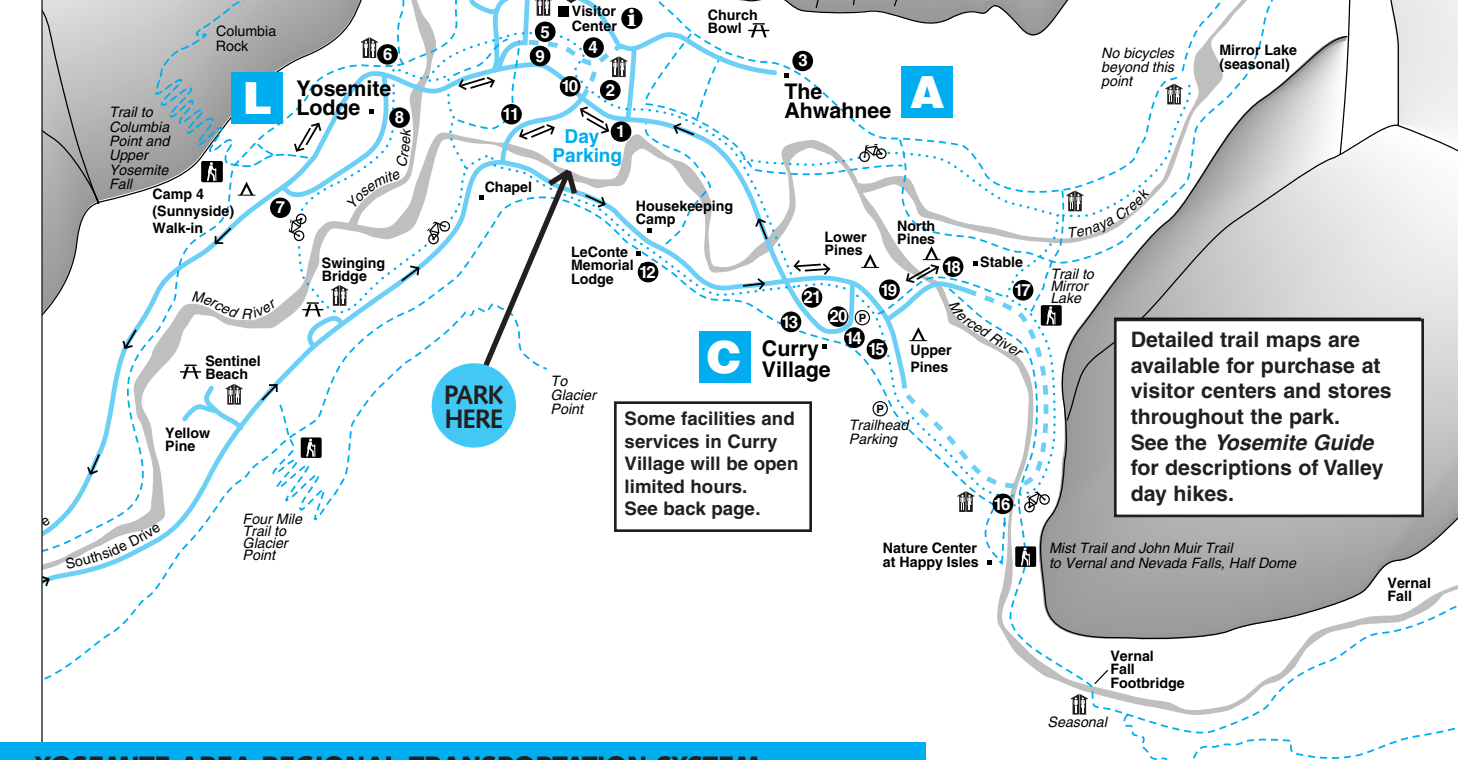
Lodging Reservations 559/252-4848



Yosemite Valley Shuttle Bus Map



YOSEMITE VALLEY DESTINATIONS	
V	Yosemite Village
C	Curry Village
L	Yosemite Lodge
A	The Ahwahnee



Ride the Free Yosemite Valley Shuttle Bus

Schedules and routes may vary.

Shuttle buses operate daily at 20-minute intervals, except during early morning and late evening hours when intervals may be 25 minutes. All buses follow the same route, serving stops in numerical order.

SCHEDULE

7:00 a.m. - 10:00 p.m.

- 1 Yosemite Village/Day Parking
- 2 Yosemite Village
- 3 The Ahwahnee
- 4 Degnan's Complex
- 5 Visitor Center
- 6 Lower Yosemite Fall
Service ends at 7:30 p.m.
- 7 Camp 4/Yosemite Falls Trailhead
- 8 Yosemite Lodge
- 9 Visitor Center
- 10 Yosemite Village
- 11 Sentinel Bridge/Yosemite Chapel
- 12 Housekeeping Camp/
LeConte Memorial Lodge
- 13 Curry Village Registration Desk
- 14 Curry Village Parking
- 15 to 18 Out of Service for Season
- 19 Lower Pines Campground
- 20 Curry Village
- 21 Ice Skating Rink

Detailed trail maps are available for purchase at visitor centers and stores throughout the park. See the *Yosemite Guide* for descriptions of Valley day hikes.

Some facilities and services in Curry Village will be open limited hours. See back page.

PARK HERE

YOSEMITE AREA REGIONAL TRANSPORTATION SYSTEM



For bus schedules to and from the Yosemite area, call 1-877-98-YARTS or visit YARTS online at www.yarts.com

Scheduled Events

Programs printed in color are especially for children and their families.

YCS = Yosemite Concession Services

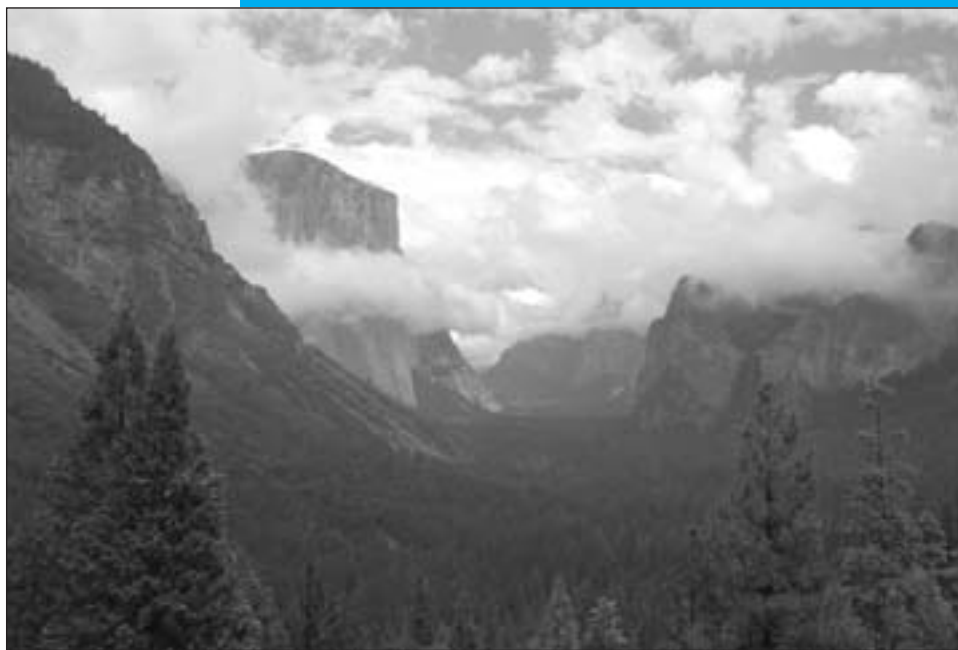
NPS = National Park Service

AAG = The Ansel Adams Gallery



Indicates programs and facilities accessible for visitors in wheelchairs, with assistance.

	SUNDAY	MONDAY	TUESDAY	WEDNESDAY
Yosemite Valley	<p>11:00am WEE WILD ONES (Except November 10) 45 min. Stories and surprises geared for children 6 and under The Ahwahnee Great Lounge fireplace (YCS) ♿</p> <p>2:00pm Ranger Walk—Merced Meanders 1½ hrs. Sentinel Bridge parking area, shuttle stop #11</p> <p>7:30pm Film—Ansel Adams, Photographer 1 hr. Yosemite Lodge, check local postings for venue (AAG) ♿</p> <p>FIRESIDE STORYTELLING 1 hr. The Ahwahnee Great Lounge fireplace (NPS) ♿</p>	<p>8:30am Winter Photo Walk 2 hrs. Sign up/meet at The Ahwahnee front desk (YCS)</p> <p>11:00am WEE WILD ONES 45 min. Stories and surprises geared for children 6 and under The Ahwahnee Great Lounge fireplace (YCS) ♿</p> <p>2:00pm Ranger Walk—Yosemite's Legacy 1½ hrs. Front of Valley Visitor Center</p> <p>7:30pm Evening Program 1 hr. Yosemite Lodge, check local postings for venue (NPS) ♿</p> <p>FIRESIDE STORYTELLING 1 hr. The Ahwahnee Great Lounge fireplace (YCS) ♿</p>	<p>9:00am Photography Walk 2 hrs. Limited space. Sign up in advance Meet on The Ansel Adams Gallery porch weather permitting (AAG)</p> <p>2:00pm CHILDREN'S STORY TIME 30 min. Stories tailored for children 7 and under Degnan's Loft, Yosemite Village shuttle stop #4 (NPS)</p> <p>7:30pm Evening Program 1 hr. Yosemite Lodge, check local postings for venue (NPS) ♿</p>	<p>11:00am WEE WILD ONES 45 min. Stories and surprises geared for children 6 and under The Ahwahnee Great Lounge fireplace (YCS) ♿</p> <p>2:00pm Ranger Walk—Merced Meanders 1½ hrs. Sentinel Bridge parking area, shuttle stop #11</p> <p>7:30pm Film—Ansel Adams, Photographer 1 hr. Yosemite Lodge, check local postings for venue (AAG) ♿</p> <p>FIRESIDE STORYTELLING 1 hr. The Ahwahnee Great Lounge fireplace (NPS) ♿</p>



Tunnel View After a Storm*

Photo by Colleen Brown

Yosemite Valley

Yosemite Museum

Located in Yosemite Village next to the Valley Visitor Center. ♿

FEATURES

Indian Cultural Exhibit

Open 9:00 a.m. to noon and 1:00 p.m. to 4:30 p.m. Displays interpret the cultural history of Yosemite's native Miwok and Paiute people from 1850 to the present. Demonstrations of traditional skills are presented. No food or drink permitted.

Yosemite Museum Store

Open 9:30 a.m. to 4:30 p.m. Offering traditional American Indian arts and crafts and books on related subjects.

The Indian Village of Ahwahnee

Located behind the Yosemite Museum and open during daylight hours. There is sometimes the opportunity to join Indian Cultural Program staff for demonstrations or programs about Ahwahneechee skills and culture. ♿

Yosemite Cemetery

This historic cemetery is located across the street and just west of the Yosemite Museum. People buried here include American Indians and others who played an important role in the development of what is now Yosemite National Park. A *Guide to the Yosemite Cemetery* is available at the Valley Visitor Center.

The Ansel Adams Gallery

Open 9:00 a.m. to 5:00 p.m. Located in Yosemite Village next to the Valley Visitor Center. The Gallery offers work of Ansel Adams, contemporary photographers, and other fine artists. In addition, hand-crafts, books, gifts, photography supplies, and camera/tripod rentals are available. For more information, call the Gallery at 209/372-4413 or visit their web site at www.anseladams.com. ♿

GALLERY EXHIBITS Through November 16

Sanctuary, an inspirational exhibit of photographs by acclaimed local photographer, William Neill, illustrates the idea that we need the beauty of nature and wilderness.

November 18 - December 28

The meticulously handcrafted classic black and white photography of John Wimberley who began his photographic work in the mid-1960s, guided by his spiritual insights.

Self-Guiding Trails

There are four self-guiding trails in Yosemite Valley:

The Miwok in Yosemite is a short loop trail that winds through the Indian Village of Ahwahnee, a reconstructed Miwok-Paiute village. A booklet is available at the trailhead and in the Visitor Center. The trail begins behind the Yosemite Museum. ♿

A Changing Yosemite is a 1-mile trail that begins in front of the Visitor Center, near shuttle stop #5. It winds through Cook's Meadow and explores the changes that have led to the Yosemite we experience today. ♿

Mirror Lake Interpretive Trail is a short loop adjacent to Mirror Lake, a seasonal lake on Tenaya Creek. Exhibits focus on the rich natural history of the area, American Indian use, and history of this popular destination. To reach the start of the trail, walk 1 mile from shuttle stop #17 to the disabled parking spaces near the lake. The self-guiding trail begins here. ♿

The Legacy of Curry Village is an easy stroll commemorating the early days of Camp Curry. Pick up a map and guide at the Curry Village front desk or tour desk.

Free Art Classes

Free, informal outdoor classes in various art mediums are available for adults through the Art Activity Center, located at the east end of Yosemite Village next to the Village Store. Each day class begins at 10:00 a.m. and ends at 2:00 p.m.



November 25 - December 1
Chris VanWinkle
Watercolor

Valley Visitor Center

Open 9:00 a.m. to 5:00 p.m. Located in Yosemite Village just west of the main post office (shuttle stops #5 and #9). Information, maps, books, exhibits, and a multilingual *One Day in Yosemite* program, self-registration for wilderness permits. ♿

NEW FILM

Spirit of Yosemite

This inspiring state-of-the-art visitor orientation film provides a stunning overview of Yosemite's splendor. It is shown every 30 minutes from 9:30 a.m. to 4:30 p.m. in the Visitor Center's newly remodeled West Auditorium Theater. Closed captioning available. ♿

Yosemite Today

Published by the National Park Service, in cooperation with Yosemite Concession Services, Corp.

Editor Kristina Rylands
Design / Production Skip Gaynard Designs
Printing Casey Printing, Inc.

We're Interested . . .

We are always looking for ways to improve our visitor publications. You can help by sending your comments via email to Kristina_Rylands@nps.gov or fax to 209/379-1294.

Photos marked with an asterisk (*) were made possible in part by the National Park Foundation through the generous support of Kodak, PROUD PARTNER of AMERICA'S NATIONAL PARKS.



SPECIAL EVENTS AT THE AHWAHNEE: Vintners' Holidays

As fall turns to winter, savor the bounty of top vineyards from around the world and raise a toast at Yosemite's annual Vintners' Holidays.

Session I	November 11-12
Session II	November 13-14
Session III	November 17-19
Session IV	November 20-21

Held in the grand manner of The Ahwahnee, each session features:

- Four seminars from renowned wine authorities
- Wine tasting of featured vineyard
- A Vintners' Banquet, featuring a 5-course dinner with wines. Limited availability; advanced reservations required.

For details, stop by The Ahwahnee concierge desk or call 209/372-1489.

November 5 - December 2, 2002

WEDNESDAY

WILD ONES

1 hr. Stories and surprises geared for children 6 and under. Meet on The Ahwahnee Great Lounge fireplace &.

Ranger Walk—Granite & Ice

1 hr. Front of Valley Visitor Center

Evening Program

1 hr. Yosemite Lodge, check local postings for venue (NPS) &.

THURSDAY

9:00am Photography Walk

2 hrs. Limited space. Sign up in advance. Meet on The Ansel Adams Gallery porch, weather permitting (AAG)

2:00pm Ranger Walk—Yosemite's First People

1 1/2 hrs. Front of Indian Cultural Exhibit at Yosemite Museum

CHILDREN'S STORY TIME

(Except November 14) 30 min. Stories tailored for children 7 and under. Degnan's Loft, Yosemite Village shuttle stop #4 (YCS)

7:30pm Evening Program

1 hr. Yosemite Lodge, check local postings for venue (NPS) &.

FRIDAY

2:00pm Fireside Chat with a Ranger

1 hr. The Ahwahnee Great Lounge fireplace (NPS) &.

7:30pm Evening Program

1 hr. Yosemite Lodge, check local postings for venue (NPS) &.

SATURDAY

9:00am Photography Walk

2 hrs. Limited space. Sign up in advance. Meet on The Ansel Adams Gallery porch, weather permitting (AAG)

2:00pm Ranger Walk—Trees

1 1/2 hrs. The Ahwahnee, shuttle stop #3

3:00pm Fine Print Viewing

1 hr. Very limited space. Sign up in advance. The Ansel Adams Gallery (AAG)

4:00pm CHILDREN'S STORY TIME

30 min. Nature stories geared for kids 10 and under. Children must be accompanied by adult. The Ansel Adams Gallery (AAG) &.

7:30pm TELLABRATION

(November 23 only) 1 1/2 hrs. Join Yosemite storytellers for an unforgettable evening. Yosemite Lodge check local postings for venue

FIRESIDE STORYTELLING

(Except November 23) 1 hr. The Ahwahnee Great Lounge fireplace (YCS) &.

Evening Program

1 hr. Yosemite Lodge, check local postings for venue (NPS) &.

Wawona & Mariposa Grove

Pioneer Yosemite History Center in Wawona

A visit to the Pioneer Yosemite History Center will explain how Yosemite was the inspiration for national parks across America and throughout the world. The Center is always open, and interpretive signs and brochures are available. *The historic Covered Bridge is temporarily closed for repair.* &

To Get to Mariposa Grove

Allow 1 1/4 hours driving time to the Mariposa Grove from Yosemite Valley. Cars are prohibited beyond the parking area in the Grove, but several giant sequoias can be seen from there. Information about access for the disabled is available at the tram boarding area. The access road to the Grove may close intermittently due to limited parking. In winter, the Mariposa Grove Road is closed due to snow. Trailers and motor homes are prohibited on the Mariposa Grove Road from the South Entrance to Mariposa Grove.

Free Mariposa Grove & Wawona Shuttle Bus

The shuttle bus stops at the Wawona Store, South Entrance, and Mariposa Grove. Shuttles operate weekends only, weather permitting beginning at 9:00 a.m. Last shuttle leaves Wawona at 5:00 p.m.; last shuttle leaves the Grove at 5:30 p.m. Visitors may park at the Wawona Store to board the shuttle bus. Due to narrow roads and very limited parking,

DISTANCE & ELEVATION

DESTINATION	DISTANCE FROM TRAILHEAD	ELEVATION GAIN
Grizzly Giant	0.8 mile /1.3km	400ft / 122m
Grove Museum	2.1 miles /3.5km	800ft / 292m
Fallen Tunnel Tree	2.5 miles /4.0km	1,000ft / 305m
Wawona Point	3.0 miles /4.8km	1,200ft / 438m

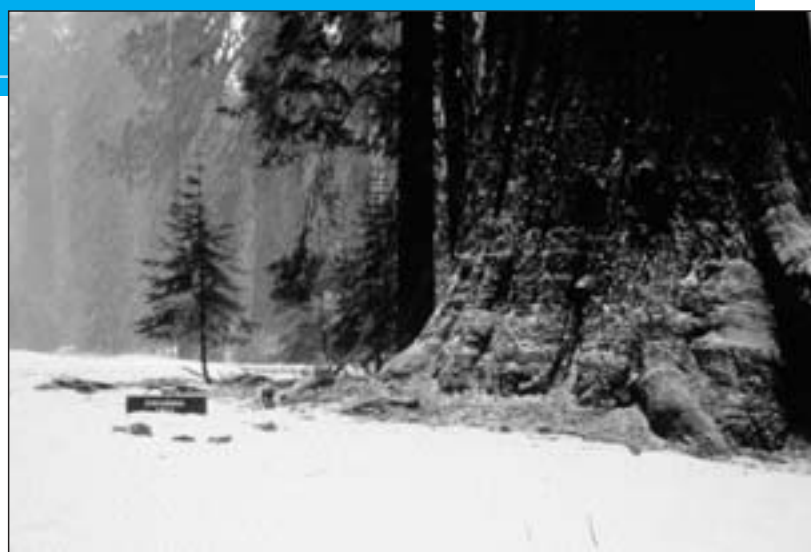
visitors are strongly encouraged to use this free bus service to help alleviate congestion and lengthy parking delays.

Walking through the Grove

The trailhead for walking up through the Grove is located at the far end of the parking area. Interpretive signs between the trailhead and the California Tree provide a self-guiding tour. Written translations are available at the trailhead in Spanish, German, French, and Japanese.

Mariposa Grove Tram Tour

Trams run every day in the Mariposa Grove of Giant Sequoias for a 1-hour tour through the lower and upper groves. The first tram is at 9:00 a.m. and the last tram is at 5:00 p.m. running every 30 minutes from the boarding area. Tours end for the season with the first snowfall.



Mariposa Grove of Giant Sequoias.

NPS Photo

Yosemite's Other Sequoia Groves

Merced Grove

Yosemite's quietest stand of sequoias is the Merced Grove, accessible only on foot. It's a 2-mile hike or ski into the grove from the Big Oak Flat Road (Highway 120 West). Located 3.5 miles north of Crane Flat or 4.5 miles south of the Big Oak Flat Entrance Station, the trailhead is marked by a post labeled B-10 and a road sign. Allow about 3 hours for the 4-mile round-trip hike or ski to this small group of sequoias (about 20 trees).

Tuolumne Grove

The Tuolumne Grove of Giant Sequoias is near Crane Flat at the intersection of the Big Oak Flat Road and the Tioga Road. The former route of the old Big Oak Flat Road leads downhill from Crane Flat into the Tuolumne Grove, a cluster of about 25 sequoias. Now closed to cars, this 2-mile round-trip walk is relatively easy, depending on conditions; however, it is moderately strenuous on the uphill return.



Inside the Telescope Tree*

Photo by Colleen Brown

Park Facilities and Services

ATM

Yosemite Village

South of Village Store (Bank of America)
Inside Village Store

Yosemite Lodge

Inside main registration area

Curry Village

Inside gift/grocery store

Wawona

Inside Wawona Store

El Portal

On Highway 140 at the Yosemite View Lodge and the El Portal Market

Babysitting

Limited babysitting is available for registered guests at Yosemite Lodge and The Ahwahnee. Call front desk or concierge for additional information.

Food & Beverage Service

These hours of operation are approximate. Current hours of operation are posted at each front desk or facility.

YOSEMITE VILLAGE

Degnan's Delicatessen 7:00 a.m. to 6:00 p.m.

Village Grill 9:00 a.m. to 5:00 p.m.

YOSEMITE LODGE

Food Court 6:30 a.m. to 8:00 p.m.

Lite fare served all day

Breakfast – 6:30 a.m. to 10:30 a.m.

Lunch – 11:30 a.m. to 2:30 p.m.

Dinner – 4:30 p.m. to 8:00 p.m.

Mountain Room Bar & Lounge

4:00 p.m. to 10:00 p.m. weekdays

Noon to 10:00 p.m. weekends

Mountain Room Restaurant

5:30 p.m. to 9:00 p.m.

CURRY VILLAGE

Coffee Corner 6:00 a.m. to 11:00 p.m.

Closes December 1

Pizza Patio 5:00 p.m. to 9:00 p.m.

Closed November 21-24

Reopens November 25-30

THE AHWAHNEE

Dining Room

Breakfast – 7:00 a.m. to 10:00 a.m.

Sunday Brunch – 7:00 a.m. to 3:00 p.m.

Lunch – (Mon – Sat) 11:30 a.m. to 3:00 p.m.

Dinner – 5:30 p.m. to 9:00 p.m.

Reservations and appropriate attire are respectfully requested. 209/372-1489

The Ahwahnee Bar

10:00 a.m. to 11:00 p.m.

WAWONA HOTEL

Dining Room

Breakfast – 7:30 a.m. to 10:00 a.m.

Sunday Brunch – 10:30 a.m. to 1:30 p.m.

Lunch – 11:30 a.m. to 1:30 p.m.

Dinner – 5:30 p.m. to 9:00 p.m.

Reservations taken for 8 or more. 209/375-1425

Gas Stations

Crane Flat

9:00 a.m. to 5:00 p.m. Diesel available.

Pay at the pump 24 hours with credit or debit card.

Wawona

9:00 a.m. to 6:00 p.m. Diesel available.

Pay at the pump 24 hours with credit or debit card.

Gifts, Books & Apparel

YOSEMITE VILLAGE

The Ansel Adams Gallery

9:00 a.m. to 5:00 p.m.

Yosemite Bookstore

9:00 a.m. to 5:00 p.m.

Inside Valley Visitor Center

Yosemite Museum Store

9:30 a.m. to 4:30 p.m.

Village Store 8:00 a.m. to 9:00 p.m.

Habitat Yosemite 10:00 a.m. to 5:00 p.m.

Sport Shop

10:00 a.m. to 6:00 p.m. *through November 30*

10:00 a.m. to 5:00 p.m. *beginning December 1*

Art Activity Center

9:00 a.m. to 5:00 p.m.

Open November 22-December 1 only

YOSEMITE LODGE

Gift/Grocery 8:00 a.m. to 9:00 p.m.

Nature Shop 11:00 a.m. to 7:00 p.m.

THE AHWAHNEE

Gift Shop 8:00 a.m. to 10:00 p.m.

Sweet Shop 7:00 a.m. to 10:00 p.m.

CURRY VILLAGE

Mountain Shop

8:00 a.m. to 7:00 p.m. *through November 30*

8:30 a.m. to 7:00 p.m. *beginning December 1*

Gift/Grocery 8:00 a.m. to 8:00 p.m.

WAWONA

Wawona Hotel Golf Shop

9:00 a.m. to 4:00 p.m.

Pioneer Gift Shop/Grocery

8:00 a.m. to 6:00 p.m.

Groceries

Yosemite Lodge Gift/Grocery

8:00 a.m. to 9:00 p.m.

Village Store 8:00 a.m. to 9:00 p.m.

Degnan's Delicatessen 7:00 a.m. to 6:00 p.m.

Curry Village Gift/Grocery

8:00 a.m. to 8:00 p.m.

Wawona Grocery Store 8:00 a.m. to 6:00 p.m.

Crane Flat 9:00 a.m. to 5:00 p.m.

El Portal Market

9:00 a.m. to 7:00 p.m. *closed November 28*

Showers & Laundromat

SHOWERS

Curry Village 24 hours

Recycling

Village Store Recycling Center

10:00 a.m. to 5:00 p.m.

Bottles and cans may also be returned to place of purchase or park gas stations

Post Offices

Main Post Office - Yosemite Village

Monday – Friday: 8:30 a.m. to 5:00 p.m.

Saturday: 10:00 a.m. to Noon

Yosemite Lodge Post Office

Monday – Thursday 11:30 a.m. to 2:45 p.m.

Friday 11:30 a.m. to 4:30 p.m.

Wawona Post Office

Monday – Friday: 9:00 a.m. to 5:00 p.m.

Saturday: 9:00 a.m. to 1:00 p.m.

El Portal Post Office

Monday – Friday: 8:30 a.m. to 12:30 p.m. and

1:30 a.m. to 5:00 p.m.

Auto Service, Towing, and Repair (AAA)

Village Garage

8:00 a.m. to 5:00 p.m. Closed for lunch.

Towing 24 hours. Emergency gasoline & propane

available. 209/372-8320

Service Organizations

Al-Anon

Wednesday 7:00 p.m. *except November 27*

YCS General Office Building

(Employee Training Center) Yosemite Village

Alcoholics Anonymous

Sunday, Tuesday, and Thursday 7:30 p.m.,

YCS General Office Building

(Employee Training Center), Yosemite Village

Narcotics Anonymous

Saturday 7:30 p.m.

YCS General Office Building

(Employee Training Center), Yosemite Village

Lions Club

Meets first and third Thursdays of each month

at noon, The Ahwahnee.

Call 209/372-4475 for information.

Rotary International

Meets Thursdays for lunch at noon in The

Ahwahnee Mural Room. Visiting Rotarian families

and guests welcome. For meeting reservations or

information, call 209/372-1016.

Religious Services

YOSEMITE COMMUNITY CHURCH

(Nondenominational Christian)

Pastor Brent Moore 209/372-4831

Yosemite Valley Chapel

Worship Service and Children's Church

Sunday 9:15 a.m.

Worship Service/Bible Study

Thursday 7:00 p.m.

Thanksgiving Service (November 28) 10:00 a.m.

ROMAN CATHOLIC

Rev. Raymond J. Duffy 209/372-4729

Mass in Yosemite Valley

Visitor Center West Auditorium

Sunday 10:00 a.m.

Yosemite Valley Chapel

Monday and Friday 12:15 p.m.

except November 15

Thanksgiving Day Mass (November 28)

12:15 p.m.

CROSSWAY CHURCH

(Christian Protestant)

Pastor Steve Hughes 209/379-2428

Worship Service

Yosemite Chapel

Sunday 7:00 p.m.

Bible Study

Girl's Club/Yosemite Valley Library

Wednesday 7:00 p.m.

EL PORTAL COMMUNITY CHURCH

Pastor Russ Marsh 209/379-2255

El Portal Chapel

Worship Service

First and third Saturday, 7:30 p.m.

Second, fourth, and fifth Sunday, 10:30 a.m.

WAWONA CHRISTIAN FELLOWSHIP

Pastor David Adamcik 209/966-3039

Wawona Community Center

Worship Service

Sunday 9:00 a.m.

Women's Bible Study

Wednesday 1:00 p.m.

General Park Information

Emergency 911

Fire – Police – Medical Emergency: Dial 911,
24 hours a day (from hotel room 9-911)

Information

Road and Weather

General Park Information

209/372-0200 www.nps.gov/yose

Campground Reservations

800/436-7275 reservations.nps.gov

Medical

Yosemite Medical Clinic

Emergency care: 24 hours daily

Drop-in and Urgent Care

Daily 8:00 a.m. to 7:00 p.m.

Scheduled Appointments

Monday – Friday 9:00 a.m. to 5:00 p.m.

Saturday 9:00 a.m. to noon

Located on Ahwahnee Drive in Yosemite Valley, the clinic provides routine and emergency medical care for park employees, residents, and visitors. Experienced nursing staff, emergency physicians, nurse practitioner, and support staff on duty. Services include a limited pharmacy, lab, x-ray, and physical therapy. Services include a limited pharmacy, lab, x-ray, physical therapy, and Mountain Crisis Services for victims of domestic violence. 209/372-4637

Paramedic/Ambulance Service

24 hours daily

Dental Services

Adjacent to Medical Clinic. For hours,

call 209/372-4200. If no answer,

call 209/372-4637.

Services For Disabled

An accessibility brochure is available at park entrance stations and visitor centers.

Wheelchair rental available at Yosemite Medical Clinic, 209/372-4637, and the Yosemite Lodge bike stand, 209/372-1208.

Accommodations

For advanced reservations or information (rooms or activities), call 559/252-4848.

(www.yosemitepark.com)

For availability on day of arrival, check at any

front desk.

Recreation

All listings in this section are conditions permitting.

YOSEMITE MOUNTAINEERING SCHOOL AND GUIDE SERVICE

Yosemite Mountaineering School and Guide Service offers lessons and guided climbing at all levels, overnight backpacking, and guided day hikes to spectacular areas of Yosemite Valley and the high country.

Curry Village

8:00 a.m. to 7:00 p.m. *through November 30*

8:30 a.m. to 7:00 p.m. *beginning December 1*

Closed for lunch

Classes meet at 8:30 a.m. 209/372-8344

BICYCLE RENTAL

Bikes, strollers, baby-joggers, wheelchairs, and six-speed bikes with trailers. Hourly and daily rates. Bikes must be returned by 5:15 p.m.

Yosemite Lodge

Curry Village *weather permitting*

10:00 a.m. to 5:30 p.m.

Closed for lunch 1:30 – 2:00 p.m.

GOLF

Wawona

9:00 a.m. to 4:00 p.m. 209/375-6572

ICE SKATING RINK

Opens for season November 22, weather permitting

Located at Curry Village, shuttle stop #21.

209/372-8341

Monday – Friday: 2 sessions

Saturday – Sunday: 4 sessions

Tours

Inquire at tour/transportation desks at the following locations.

Yosemite Lodge Tour Desk

8:00 a.m. to 5:00 p.m.

Yosemite Village Tour Desk

9:00 a.m. to 3:00 p.m.

Curry Village Tour Desk

8:00 a.m. to 5:00 p.m.

SIGHTSEEING TOURS

All listings in this section are conditions permitting.

Valley Floor Tour

This 26-mile, 2-hour tram tour departs several

times daily from Yosemite Lodge. Check for

hours at any tour desk.

Glacier Point Tour

A 4-hour round trip from Yosemite Valley to Glacier Point. The Glacier Point Tour also offers a one-way ticket to adventurers to hike back down to Yosemite Valley. Departs at 8:30 and 10:00 a.m., and 1:30 p.m. from Yosemite Lodge. Ends for season when Glacier Point Road closes.

Big Trees Tram Tour

Trams run every day in the Mariposa Grove of Giant Sequoias for a 1-hour tour through the lower and upper groves. The first tram is at 9:00 a.m. and the last tram is at 5:00 p.m., running every 30 minutes from the boarding area. Ends for season with the first snowfall. 209/375-1621

Grand Tour

An 8-hour combination of Big Trees and Glacier Point Tours. Departs 8:45 a.m. daily from Yosemite Lodge. Weather and road conditions permitting.