



Experience
Your
America

Yosemite Today

November 4 -
December 1, 2003

Yosemite National Park

ROAD INFO

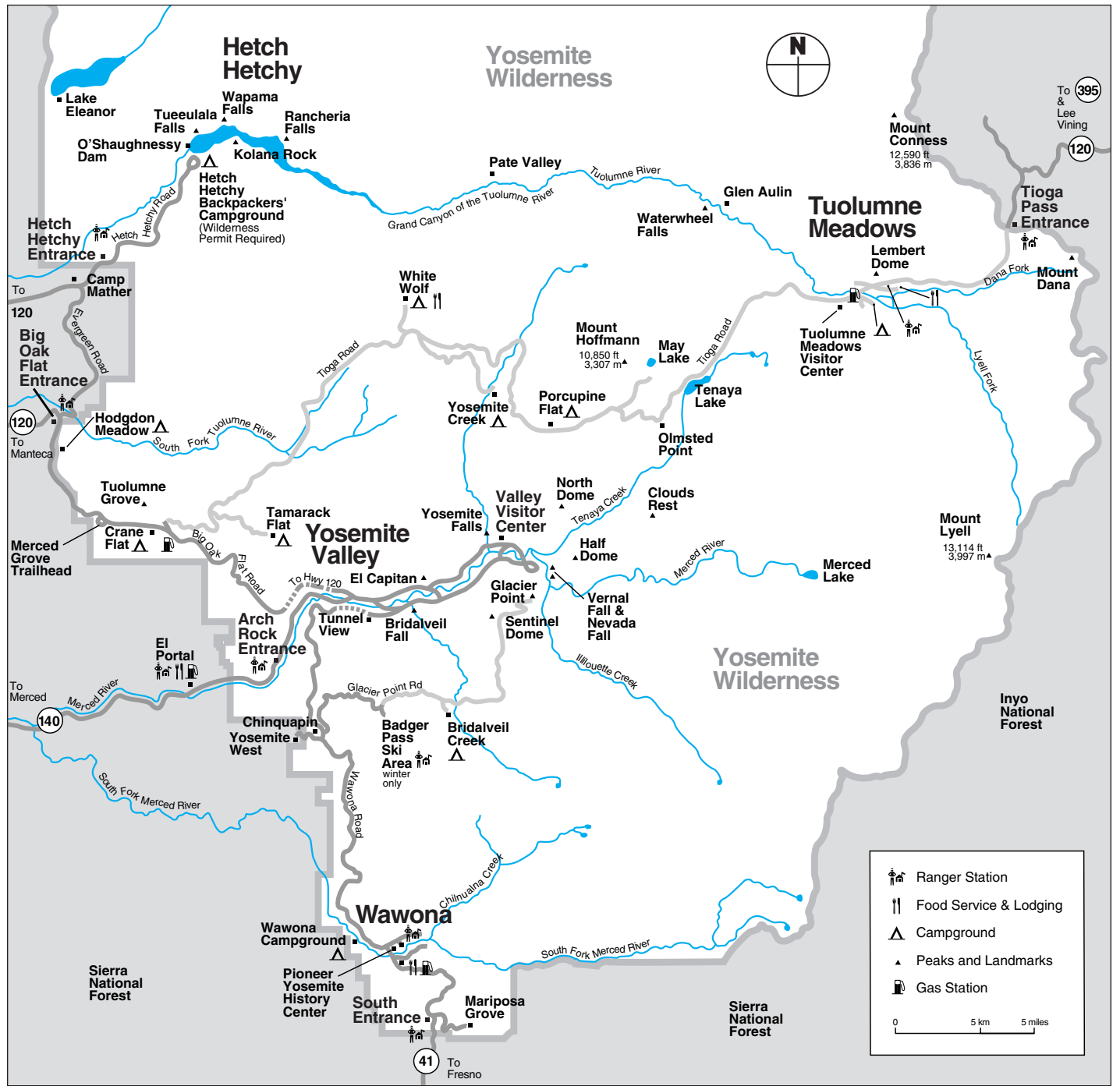
Due to construction, you may experience short delays or temporary detours on some park roads. Call 209/372-0200 for recorded road information.

Cascades Diversion Dam Removal in Progress

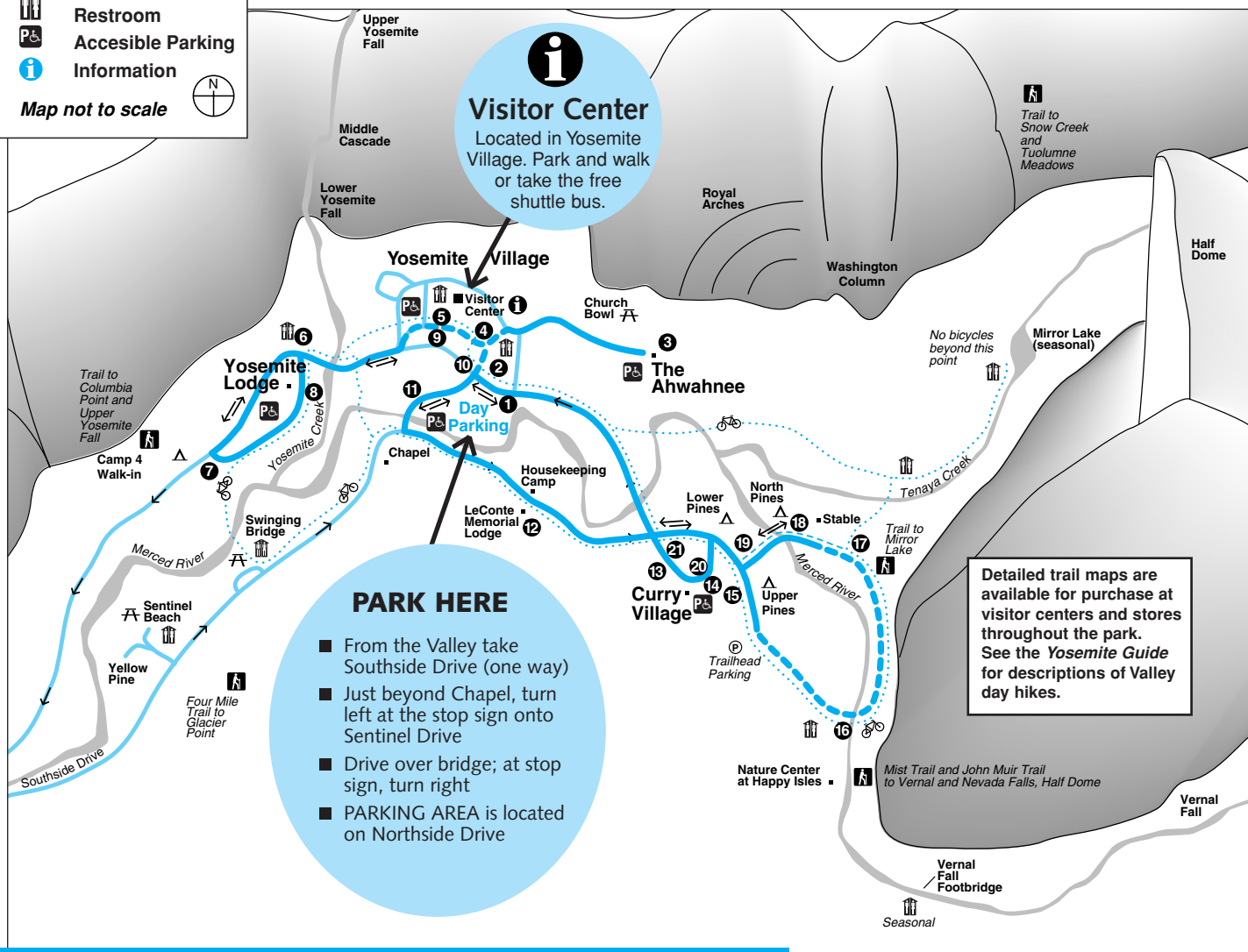
Please use caution when entering the intersection of El Portal and Big Oak Flat Roads in the west end of Yosemite Valley.

Easy Access to Lower Yosemite Fall

During construction at Lower Yosemite Fall, you are encouraged to park in the designated day-visitor lot at Yosemite Village and take the free shuttle bus as you explore the Valley.



Yosemite Valley Shuttle Bus Map



Ride the Free Yosemite Valley Shuttle Bus

Schedules and routes may vary. Shuttle buses operate daily at 30-minute intervals Sunday through Thursday and 20-minute intervals on Friday and Saturday. All buses follow the same route, serving stops in numerical order.

SCHEDULE

7:00 a.m. - 10:00 p.m.

- 1 Yosemite Village/Day Parking
- 2 Yosemite Village
- 3 The Ahwahnee
- 4 Yosemite Village/Degnan's Complex
- 5 Visitor Center
- 6 Lower Yosemite Fall
Service ends at dark.
- 7 Camp 4/Yosemite Falls Trailhead
- 8 Yosemite Lodge
- 9 Visitor Center
- 10 Yosemite Village
- 11 Sentinel Bridge/Yosemite Chapel
- 12 Housekeeping Camp/
LeConte Memorial Lodge
- 13 Bicycle Rental Stand
- 14 Curry Village
- 15 Upper Pines Campground*
- 16 Happy Isles/John Muir Trailhead*
- 17 Mirror Lake Junction*
- 18 Stable*
- 19 Lower Pines Campground
- 20 Curry Village
- 21 Bicycle Rental Stand

*Service ends at 8:30 p.m.

YOSEMITE AREA REGIONAL TRANSPORTATION SYSTEM



For bus schedules to and from the Yosemite area, call 1-877-98-YARTS or visit YARTS online at www.yarts.com

Scheduled Events

Programs printed in color are especially for children and their families.

NPS = National Park Service

DNC = Delaware North Corporation at Yosemite

AAG = The Ansel Adams Gallery

S = Programs offered for a fee



Indicates programs and facilities accessible for visitors in wheelchairs, with assistance.

	SUNDAY	MONDAY	TUESDAY	WEDNESDAY
Yosemite Valley	<p>9:00am Photography Walk 2 hrs. Limited space, advance sign up required. Meet at The Ansel Adams Gallery. Weather permitting (AAG)</p> <p>11:00am WEE WILD ONES (November 9 and 23 only) 45 min. Stories and activities for kids 6 & under. The Ahwahnee Great Lounge fireplace (DNC) &</p> <p>2:00pm Ranger Walk—A Changing Yosemite (except November 9) 1½ hrs. Meet in front of Visitor Center (NPS)</p> <p>7:30pm Film—Ansel Adams 1 hr. Yosemite Lodge, check local postings for venue (AAG) &</p>	<p>8:30am Autumn Photo Walk 2 hrs. Sign up/meet at The Ahwahnee front desk (DNC)</p> <p>2:00pm Ranger Walk—Yosemite's First People 1½ hrs. Meet in front of Yosemite Museum (NPS)</p> <p>7:30pm Evening Program 1 hr. Yosemite Lodge, check local postings for venue (DNC/NPS) &</p>	<p>9:00am Photography Walk 2 hrs. Limited space, advance sign up required. Meet at The Ansel Adams Gallery. Weather permitting (AAG)</p> <p>12:00pm Yosemite Forum—Sierra Wilderness Protection and Aquatic Species (November 18 only) 1 hr. Interactive lecture with biologist, Kathleen Matthews. Visitor Center West Auditorium (NPS) &</p> <p>2:00pm Ranger Walk—Trees 1½ hrs. Curry Village Amphitheater (NPS)</p> <p>7:30pm Evening Program 1 hr. Yosemite Lodge, check local postings for venue (DNC) &</p>	<p>11:00am WEE WILD ONES (November 18 and 23 only) 45 min. Stories and activities for kids 6 & under. The Ahwahnee Great Lounge fireplace (DNC) &</p> <p>2:00pm NPS Ranger Walk (November 18 and 23 only) 45 min. Meet in front of Visitor Center (NPS)</p> <p>7:30pm Evening Program 1 hr. Yosemite Lodge, check local postings for venue (DNC) &</p>
Wawona			<p>5:30pm Vintage Music of Yosemite 4 hrs. Live music with pianist/singer, Tom Bopp. Wawona Hotel Lounge (DNC) &</p>	<p>5:30pm Vintage Music of Yosemite 4 hrs. Live music with pianist/singer, Tom Bopp. Wawona Hotel Lounge (DNC) &</p>

Night Sky Information



Take advantage of the opportunities in Yosemite to view the wonders of the night sky. Here are some sights to look for while you are out during the night hours.

November 8: A total eclipse of the moon takes place early this evening. West coast skywatchers can catch the last half of the events low in the east after sunset and dusk.

November 9: The full moon of November is called the Frost Moon.

November 13: Saturn glows yellow below the waning gibbous moon after they rise in mid-evening.

November 18: Bright Jupiter shines below the moon after they rise around 1:00 a.m. and climb higher in the east until dawn.

November 26: Venus shines well to the lower right of the crescent moon in the southwest during early twilight.

December 1: Mars is the orange "star" to the upper right of the moon in early evening. Later tonight, Mars swings to the moon's lower right.



Tunnel View After a Storm

Photo by Colleen Brown

Yosemite Valley

Visitor Center Temporarily Relocated

While the Yosemite Valley Visitor Center is undergoing renovation this winter, park rangers and the Yosemite Association bookstore will be located just two doors down, between The Ansel Adams Gallery and Valley Post Office in Yosemite Village (shuttle stops #5 and #9).

Valley Visitor Center

Open 9:00 a.m. to 5:00 p.m. Information, maps, books, and exhibits. Bear canister rental and self-registration for wilderness permits. & TTY

FILM

Spirit of Yosemite

This inspiring state-of-the-art visitor orientation film provides a stunning overview of Yosemite's splendor. It is shown every 30 minutes from Monday to Saturday 9:00 a.m. to 4:30 p.m., and Sunday noon to 4:30 p.m. in the Visitor Center's West Auditorium Theater. Closed captioning available. & CC

Yosemite Museum

Located in Yosemite Village next to the Valley Visitor Center. &

FEATURES

Indian Cultural Exhibit

Open 9:00 a.m. to noon and 1:00 p.m. to 5:00 p.m. Displays interpret the cultural history of Yosemite's native Miwok and Paiute people from 1850 to the present. Demonstrations of traditional skills are presented. No food or drink permitted.

Yosemite Museum Store

Open 9:00 a.m. to 5:00 p.m. Offering traditional American Indian arts and crafts and books on related subjects.

The Indian Village of Ahwahnee

Located behind the Yosemite Museum and open during daylight hours. Occasionally, Indian Cultural Program staff provide demonstrations or programs about Ahwahneechee skills and culture. &

Yosemite Cemetery

This historic cemetery is located across the street and just west of the Yosemite Museum. People buried here include American Indians and others who played an important role in the development of what is now Yosemite National Park. A *Guide to the Yosemite Cemetery* is available at the Valley Visitor Center.

The Ansel Adams Gallery

Open 9:00 a.m. to 5:00 p.m. Located in Yosemite Village next to the Valley Visitor Center. The Gallery offers work of Ansel Adams, contemporary photographers, and other fine artists. In addition, hand-crafts, books, gifts, photography supplies, and camera/tripod rentals are available. For more information, call the Gallery at 209/372-4413 or visit their web site at www.anseladams.com. &

GALLERY EXHIBITS

The Gallery's fall exhibit will highlight a new body of work by photographer, Carol Henry, including prints made using glass, paper, and found objects. Her use of color, form, and light creates photographic images that are unique and profound.

SPECIAL BOOK SIGNINGS

Friday, November 28

Noon to 2:00 p.m.

Join The Gallery for a book signing with local photographer, *Michael Frye*, whose photographs appear in the new book *Yosemite Meditations* recently published by the Yosemite Association.

Saturday, November 29

Noon to 2:00 p.m.

Local author *Michael Elsohn Ross* will be on hand to sign his works, including those in his "ology" book series, *Nature Art with Chiura Obata*, and many other well known children's books.

Yosemite Today

Published by the National Park Service, in cooperation with Delaware North Corporation Parks & Resorts at Yosemite

Editor Kristina Rylands
Design / Production Skip Gaynard Designs
Printing Casey Printing, Inc.

We're Interested . . .

We are always looking for ways to improve our visitor publications. You can help by sending your comments via e-mail to Kristina_Rylands@nps.gov or fax to 209/379-1295.

November 4 - December 1, 2003

WEDNESDAY

WILD ONES

November 5 only)
n. Stories and activities for kids 6 & 7.
The Ahwahnee Great Lounge fire
(DNC) ♿

Open House

November 19 only)
Learn about park improvement
plans, check at Visitor Center for venue
&

Ranger Walk—Granite & Ice

November 5. Meet in front of Visitor Center

Evening Program

Yosemite Lodge, check local postings
for venue (DNC/NPS) ♿

THURSDAY

9:00am Photography Walk

2 hrs. Limited space, advance sign up
required. Meet at The Ansel Adams Gallery
weather permitting (AAG)

2:00pm Ranger Walk—Bears

1½ hrs. Curry Village Amphitheater (NPS)

7:30pm Evening Program

1 hr. Yosemite Lodge, check local postings
for venue (DNC) ♿

FIRESIDE STORYTELLING FOR ALL

AGES (November 6 only)
1 hr. The Ahwahnee Great Lounge fireplace
(DNC) ♿

FRIDAY

2:00pm Ranger Walk—Rivers and Waterfalls

1½ hrs. Meet at Sentinel Bridge
Shuttle stop #11 (NPS)

7:30pm Evening Program

1 hr. Yosemite Lodge, check local postings
for venue (DNC/NPS) ♿

SATURDAY

9:00am Photography Walk

2 hrs. Limited space, advance sign up
required. Meet at The Ansel Adams Gallery
Weather permitting (AAG)

2:00pm Ranger Walk—Yosemite's Legacy

(except November 15)
1½ hrs. Curry Village Amphitheater (NPS)

3:00pm Fine Print Viewing

1 hr. Very limited space
Sign up in advance
Meet in The Ansel Adams Gallery (AAG)

4:00pm CHILDREN'S STORY TIME

½ hr. Front porch of The Ansel Adams
Gallery. Children 7 and under must be
accompanied by an adult (AAG)

7:30pm Evening Program

1 hr. Yosemite Lodge, check local postings
for venue (DNC/NPS) ♿

Live Music of Yosemite

Live music with pianist/singer,
Tom Bopp. Wawona Hotel Lounge
&

8:30pm Vintage Yosemite Music/Wawona History

(On some nights; check at front desk)
4 hrs. Live music and/or history slide show
Wawona Hotel Lounge

5:30pm Vintage Music of Yosemite

4 hrs. Live music with pianist/singer,
Tom Bopp. Wawona Hotel Lounge
(DNC) ♿

8:30pm Vintage Yosemite Music/Wawona History

(On some nights; check at front desk)
4 hrs. Live music and/or history slide show
Wawona Hotel Lounge

Wawona & Mariposa Grove

Wilderness Permits

Self-registration for wilderness permits will be
available on the front porch of Hill's Studio (near
Wawona Hotel) for Chilnualna Falls and Alder Creek
trails only. Permits for all other trails are available at
the Yosemite Valley Visitor Center.

Pioneer Yosemite History Center

Visit the Pioneer Yosemite History Center and see old
log cabins and buildings from Yosemite's early days.
You can also learn about the growth and develop-
ment of Yosemite and the national park idea in
America. If the Wawona Covered Bridge is closed for
restoration, you can walk to the Pioneer Yosemite
History Center from the parking area on Chilnualna
Falls Road. Informational signs are located in front of
the buildings at the Pioneer Yosemite History Center.

Evening Programs

Join pianist/singer Tom Bopp in the Wawona Hotel
lobby from 5:30 p.m. to 9:30 p.m., Tuesday through
Saturday, as he performs songs and stories from
Yosemite's past. Tom also features presentations with
slides, historic Yosemite music, or Wawona
history on some Thursday and Saturday nights. ♿

Free Mariposa Grove & Wawona Shuttle Bus Through November 17

The shuttle bus stops at the Wawona Store, South
Entrance, and Mariposa Grove. Shuttles operate
throughout the day beginning at 9:00 a.m. Last
shuttle leaves the Grove at 6:00 p.m. Visitors may
park at the Wawona Store to board the shuttle bus.
Due to narrow roads and very limited parking, visitors
are strongly encouraged to use this free bus service.

To Get to Mariposa Grove

Allow 1¼ hours driving time to the Mariposa Grove
from Yosemite Valley. Cars are prohibited beyond the
parking area in the Grove, but several giant sequoias
can be seen from there. Information about access
for the disabled is available at the tram boarding
area. The access road to the Grove may close due to
snow. Trailers and motor homes are prohibited on
the Mariposa Grove Road from the South Entrance
to Mariposa Grove.

DISTANCE & ELEVATION

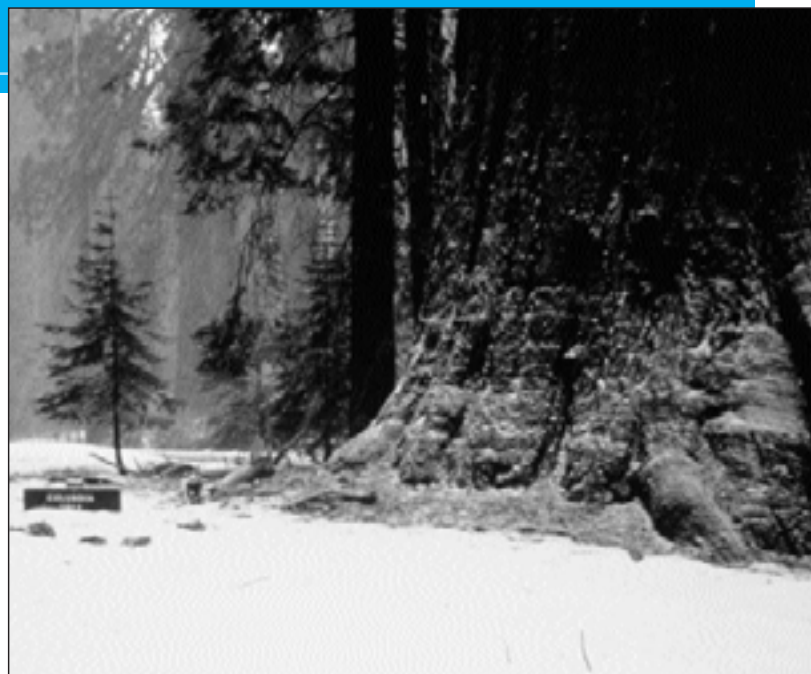
DESTINATION	DISTANCE FROM TRAILHEAD	ELEVATION GAIN
Grizzly Giant	0.8 mile /1.3km	400ft / 122m
Grove Museum	2.1 miles /3.5km	800ft / 292m
Fallen Tunnel Tree	2.5 miles /4.0km	1,000ft / 305m
Wawona Point	3.0 miles /4.8km	1,200ft / 438m

Walking through the Grove

The trailhead for walking up through the Grove is
located at the far end of the parking area. Interpretive
signs between the trailhead and the California Tree
provide a self-guiding tour. Written translations are
available at the trailhead in Spanish, German, French,
and Japanese.

Mariposa Grove Tram Tour

Until the first snow falls, trams will run daily
in the Mariposa Grove of Giant Sequoias for a
1-hour tour through the lower and upper groves.
The first tram is at 9:00 a.m. and the last tram is
at 5:00 p.m.



Mariposa Grove of Giant Sequoias

NPS Photo

Yosemite's Other Sequoia Groves

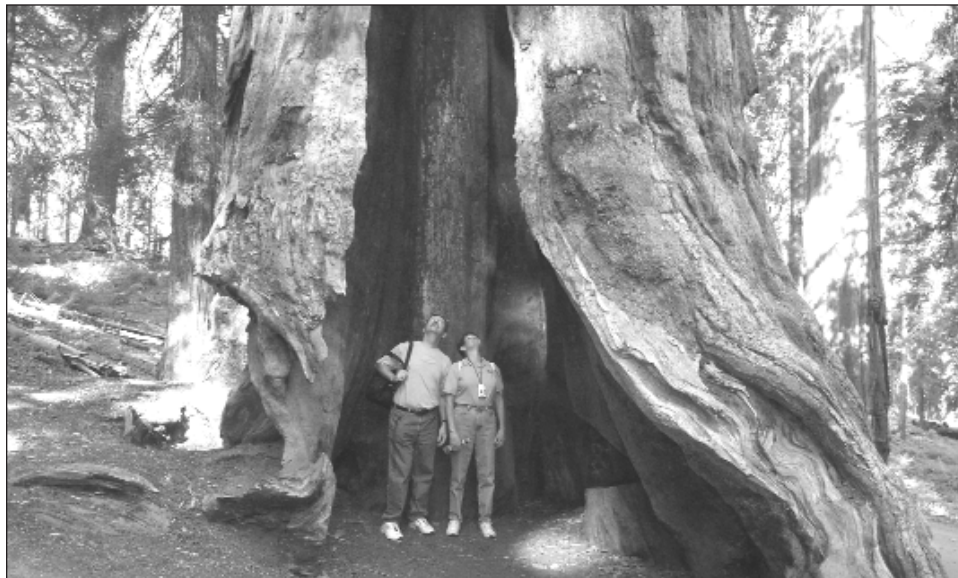
Yosemite's Other Sequoia Groves

Tuolumne Grove

The Tuolumne Grove of Giant Sequoias is near Crane Flat at the intersection of the Big Oak Flat Road (Highway 120 West) and the Tioga Road. The former route of the Big Oak Flat Road leads downhill from Crane Flat into the Tuolumne Grove of Big Trees, a cluster of about 25 sequoias. Now closed to cars, this 2-mile (3.2 km) round-trip has an elevation change of 500 feet (150 meters). The downhill walk is relatively easy, though it is moderately strenuous on the uphill return. Once in the Tuolumne Grove, there is an easy half-mile, self-guiding nature trail.

Merced Grove

Yosemite's quietest stand of sequoias is the Merced Grove, accessible only on foot. It's a 4-mile roundtrip hike into the grove from the Big Oak Flat Road (Highway 120 West). Located 3.5 miles north of Crane Flat or 4.5 miles south of the Big Oak Flat entrance, the trailhead is marked by a post labeled B-10 and a road sign. Allow 3 hours for the round-trip hike to this group of about 20 sequoias.



Inside the Telescope Tree

Photo by Colleen Brown

Park Facilities and Services

ATM

Yosemite Village
South of Village Store (Bank of America)
Inside Village Store

Yosemite Lodge
Inside main registration area

Curry Village
Inside gift/grocery store

Wawona
Inside Wawona Store

El Portal
On Highway 140 at the Yosemite View Lodge and
the El Portal Market.

Babysitting

Limited babysitting available for registered guests
at Yosemite Lodge and The Ahwahnee. Call front
desk or concierge for additional information.

Food & Beverage Service

These hours of operation are approximate.
Current hours of operation are posted at each front
desk or facility.

YOSEMITE VILLAGE
Degnan's Delicatessen
7:00 a.m. to 5:00 p.m.

Village Grill
11:00 a.m. to 5:00 p.m.

YOSEMITE LODGE
Food Court
Breakfast - 6:30 a.m. to 10:30 a.m.
Lunch - 11:30 a.m. to 2:30 p.m.
Dinner - 5:00 p.m. to 8:00 p.m.
Food to go - 8:00 p.m. to 9:00 p.m.
Light menu served between meal periods

Mountain Room Bar & Lounge
4:30 p.m. to 10:30 p.m. weekdays
Noon to 10:30 p.m. weekends

Mountain Room Restaurant
5:30 p.m. to 9:00 p.m.

THE AHWAHNEE
Dining Room
Breakfast - 7:00 a.m. to 10:30 a.m., Mon - Sat
Lunch - 11:30 a.m. to 3:00 p.m., Mon - Sat
Sunday Brunch - 7:00 a.m. to 3:00 p.m.
Dinner - 5:30 p.m. to 9:00 p.m.
Reservations and appropriate attire are
respectfully requested. 209/372-1489

The Ahwahnee Bar
10:30 a.m. to 11:00 p.m.
Food Service - 11:00 a.m. to 10:00 p.m.

CURRY VILLAGE
Coffee Corner
6:00 a.m. to 11:00 p.m.

Pizza Patio
5:00 p.m. to 9:00 p.m.

WAWONA HOTEL
Dining Room
Breakfast and Buffet - 7:30 a.m. to 10:00 a.m.
Sunday Brunch - 7:30 a.m. to 1:30 p.m.
Lunch - 11:30 a.m. to 1:30 p.m.
Dinner - 5:30 p.m. to 9:00 p.m.
Reservations taken for 8 or more. 209/375-1425

Gas Station

Wawona
9:00 a.m. to 6:00 p.m. Diesel & propane available.
Pay at the pump 24 hours with credit or debit card.

Crane Flat
8:00 a.m. to 6:00 p.m. Diesel available.
Pay at the pump 24 hours with credit or debit card.

El Portal
8:00 a.m. to 5:00 p.m. Diesel available.
Pay at the pump 24 hours with credit or debit card.

Gifts, Books, & Apparel

YOSEMITE VILLAGE
The Ansel Adams Gallery
9:00 a.m. to 5:00 p.m.

Yosemite Bookstore
9:00 a.m. to 5:00 p.m.
Inside Visitor Center

Yosemite Museum Store
9:00 a.m. to 5:00 p.m.

Village Store 8:00 a.m. to 9:00 p.m.

Habitat Yosemite 9:00 a.m. to 6:00 p.m.

Sport Shop 8:30 a.m. to 6:00 p.m.

YOSEMITE LODGE
Gift/Grocery 8:00 a.m. to 9:00 p.m.
Nature Shop 10:00 a.m. to 6:00 p.m.

THE AHWAHNEE
Gift Shop 8:00 a.m. to 10:00 p.m.
Sweet Shop 7:00 a.m. to 10:00 p.m.

CURRY VILLAGE
Mountain Shop 8:00 a.m. to 8:00 p.m.
Gift/Grocery 8:00 a.m. to 9:00 p.m.

WAWONA
Pioneer Gift Shop/Grocery
8:00 a.m. to 7:00 p.m.

MARIPOSA GROVE
Gift Shop 9:00 a.m. to 6:00 p.m.

Groceries

Yosemite Lodge Gift/Grocery
8:00 a.m. to 9:00 p.m.

Village Store
8:00 a.m. to 9:00 p.m.

Degnan's Delicatessen
7:00 a.m. to 5:00 p.m.

Curry Village Gift/Grocery
8:00 a.m. to 9:00 p.m.

Wawona Grocery Store
8:00 a.m. to 7:00 p.m.

Crane Flat
8:00 a.m. to 6:00 p.m.

El Portal Market *Closed November 27*
9:00 a.m. to 7:00 p.m.

Showers & Laundromat

SHOWERS
Curry Village 24 hours

LAUNDROMAT
Housekeeping Camp
8:00 a.m. to 10:00 p.m.

Recycling

Village Store Recycling Center
Noon to 5:00 p.m.

Post Offices

Main Post Office - Yosemite Village
Monday - Friday 8:30 a.m. to 5:00 p.m.
Saturday 10:00 a.m. to noon

Yosemite Lodge Post Office
Monday - Thursday 11:30 a.m. to 2:45 p.m.
Friday 11:30 a.m. to 4:30 p.m.

Wawona Post Office
Monday - Friday 9:00 a.m. to 5:00 p.m.
Saturday 9:00 a.m. to noon

El Portal Post Office
Monday - Friday 8:30 a.m. to 12:30 p.m.,
1:30 p.m. to 5:00 p.m.

Auto Service, Towing, and Repair (AAA)

Village Garage
8:00 a.m. to noon, 1:00 p.m. to 5:00 p.m.
Towing 24 hours. Propane available until 4:00 p.m.
209/372-8320

Service Organizations

Al-Anon
No meetings in November.

Alcoholics Anonymous
Sunday 8:30 p.m.
Tuesday, and Thursday 7:30 p.m.
YCS General Office Building
(Employee Training Center) Yosemite Village

Narcotics Anonymous
Saturday 8:00 p.m.
YCS General Office Building
(Employee Training Center) Yosemite Village

Lions Club
Meets first and third Thursdays of each month
at noon, The Ahwahnee.
Call 209/372-4475 for information.

Rotary International
Meets Thursdays for lunch at noon in
The Ahwahnee Mural Room. Visiting Rotarian
families and guests welcome. For meeting
reservations or information, call 209/372-1401.

Religious Services

YOSEMITE COMMUNITY CHURCH
(Nondenominational Christian)
Pastor Brent Moore 209/372-4831
Yosemite Valley Chapel (year-round)
Worship Services
Sunday 9:15 a.m. (*Children's Church and Nursery*)
Thursday 7:00 p.m.

ROMAN CATHOLIC
Rev. Raymond J. Duffy 209/372-4729
Mass in Yosemite Valley
Visitor Center West Auditorium
Sunday 10:00 a.m.

CHURCH OF CHRIST
Ron Skelton 209/379-2307
El Portal Chapel
Worship Service
Sunday 9:00 a.m.

CROSSWAY CHURCH
(Christian Protestant)
Pastor Steve Hughes 209/379-2428
Worship Service
Sunday 7:00 p.m. Yosemite Chapel

Men's Bible Study
Wednesday 7:00 p.m.

Women's Bible Study
Call for time and location

EL PORTAL COMMUNITY CHURCH
Pastor Russ Marsh 209/379-2255
El Portal Chapel
Worship Service
First and third Saturday 7:30 p.m.
Second, fourth, and fifth Sunday 10:30 a.m.

WAWONA CHRISTIAN FELLOWSHIP
Pastor David Adamcik 209/966-3039
Wawona Community Center
Worship Service
Sunday 9:00 a.m.
Women's Bible Study
Wednesday 1:00 p.m.

General Park Information

Emergency 911

Fire - Police - Medical Emergency:
Dial 911, 24 hours a day (from hotel room 9-911)

Information

Road and Weather
General Park Information
209/372-0200 www.nps.gov/yose
Campground Reservations
800/436-7275 reservations.nps.gov

Medical

Yosemite Medical Clinic
Emergency care: 24 hours daily

Drop-in and Urgent Care
Daily 8:00 a.m. to 7:00 p.m.

Scheduled Appointments
Monday - Friday 8:00 a.m. to 5:00 p.m.
Saturday 9:00 a.m. to noon

Located on Ahwahnee Drive in Yosemite Valley,
the clinic provides routine and emergency medical
care for park employees, residents, and visitors.
Experienced nursing staff, emergency physicians,
nurse practitioner, and support staff on duty.
Services include a limited pharmacy, lab, x-ray,
and physical therapy. Services include a limited
pharmacy, lab, x-ray, physical therapy, and
Mountain Crisis Services for victims of domestic
violence. 209/372-4637

Paramedic/Ambulance Service
24 hours daily

Dental Services
Adjacent to Medical Clinic.
For hours, call 209/372-4200.
If no answer, call 209/372-4637.

Services For Disabled

The *Yosemite Accessibility Guide* is available at
park entrance stations, visitor centers, and
online at www.nps.gov/yose/trip/access.htm.

TTYs are available inside the Valley Visitor Center,
The Ahwahnee, Yosemite Lodge, and outside the
Curry Village front desk.

Wheelchair rental available at Yosemite Medical
Clinic, 209/372-4637, and the Yosemite Lodge
bike stand, 209/372-1208.

Accommodations

For advanced reservations or information (rooms
or activities), call 559/252-4848
(www.yosemitepark.com)
For availability on day of arrival, check at any
front desk.

Bear Canister Rental

Available for \$5 per trip at the Yosemite Valley
Visitor Center, Crane Flat Store, and the Hetch
Hetchy Entrance Station. Canisters may be rented
or returned at any rental location in the park.
Drop bins are available for after-hour returns,
including the Yosemite Valley trailhead parking
area, near Happy Isles.

Wilderness Permits

All wilderness centers are closed for the season.
Anyone going overnight into Yosemite's back-
country must have a wilderness permit. You can
self-register at one of the following locations:
Yosemite Valley Visitor Center, Hill's Studio porch
(near Wawona Hotel), or Hetch Hetchy Entrance
Station.

Tioga Road is closed to all overnight parking.
Bears can remain active throughout the winter.
Visitors heading into Yosemite's wilderness areas
are highly encouraged to use bear resistant food
canisters.

Recreation

Conditions permitting.

YOSEMITE MOUNTAINEERING SCHOOL AND GUIDE SERVICE

Yosemite Mountaineering School and Guide
Service offers lessons and guided climbing at all
levels, overnight backpacking, and guided day
hikes to spectacular areas of Yosemite Valley and
the high country.

Curry Village
Located in the Mountain Shop
9:00 a.m. to noon, 1:00 p.m. to 5:00 p.m.
Classes meet at 8:30 a.m. 209/372-9063

BICYCLE RENTAL

Daily, weather permitting, with hourly and daily
rates. Baby-joggers, wheelchairs, and
six-speed bikes with trailers. Bikes must be
returned by 5:45 p.m.

Yosemite Lodge
9:00 a.m. to 5:30 p.m. 209/372-1208

Curry Village
Located at shuttle stops #13 & 21
9:00 a.m. to 5:30 p.m. 209/372-8319

ICE SKATING

The Curry Village ice rink is scheduled to open
November 21, weather permitting. Located at
shuttle stop #21. 209/372-8341.

Tours

Inquire at tour/transportation desks at the
following locations.

Yosemite Lodge Tour Desk
8:30 a.m. to 4:00 p.m., Sunday - Thursday
8:00 a.m. to 8:00 p.m., Friday - Saturday

Yosemite Village Tour Kiosk
9:00 a.m. to 4:00 p.m.

SIGHTSEEING TOURS*

Valley Floor Tour
This 26-mile, 2-hour tour departs several times
daily from Yosemite Lodge in Yosemite Valley.
Check at tour desk for hours.

Glacier Point Tour
A 4-hour round trip from Yosemite Valley
to Glacier Point. The Glacier Point Tour also
offers a one-way ticket for adventurers to
hike back down to Yosemite Valley. Departs
at 8:00 a.m., 10:00 a.m., and 1:00 p.m.
daily from Yosemite Lodge. Ends for season
when Glacier Point Road closes.

Big Trees Tram Tour
Trams run every day in the Mariposa Grove
of Giant Sequoias for a 1-hour tour through
the lower and upper groves. The first tram is
at 9:00 a.m. and the last tram is at 5:00 p.m.
Tours will operate until the first snow.
Call 209/375-1621 for information.

Grand Tour
An 8-hour combination of Big Trees and
Glacier Point Tours. Departs 8:45 a.m. daily
from Yosemite Lodge. Ends for season when
Glacier Point Road closes.

*Weather permitting