



Experience
Your
America

Yosemite Today

December 2, 2003 -
January 5, 2004

Yosemite National Park

ROAD INFO

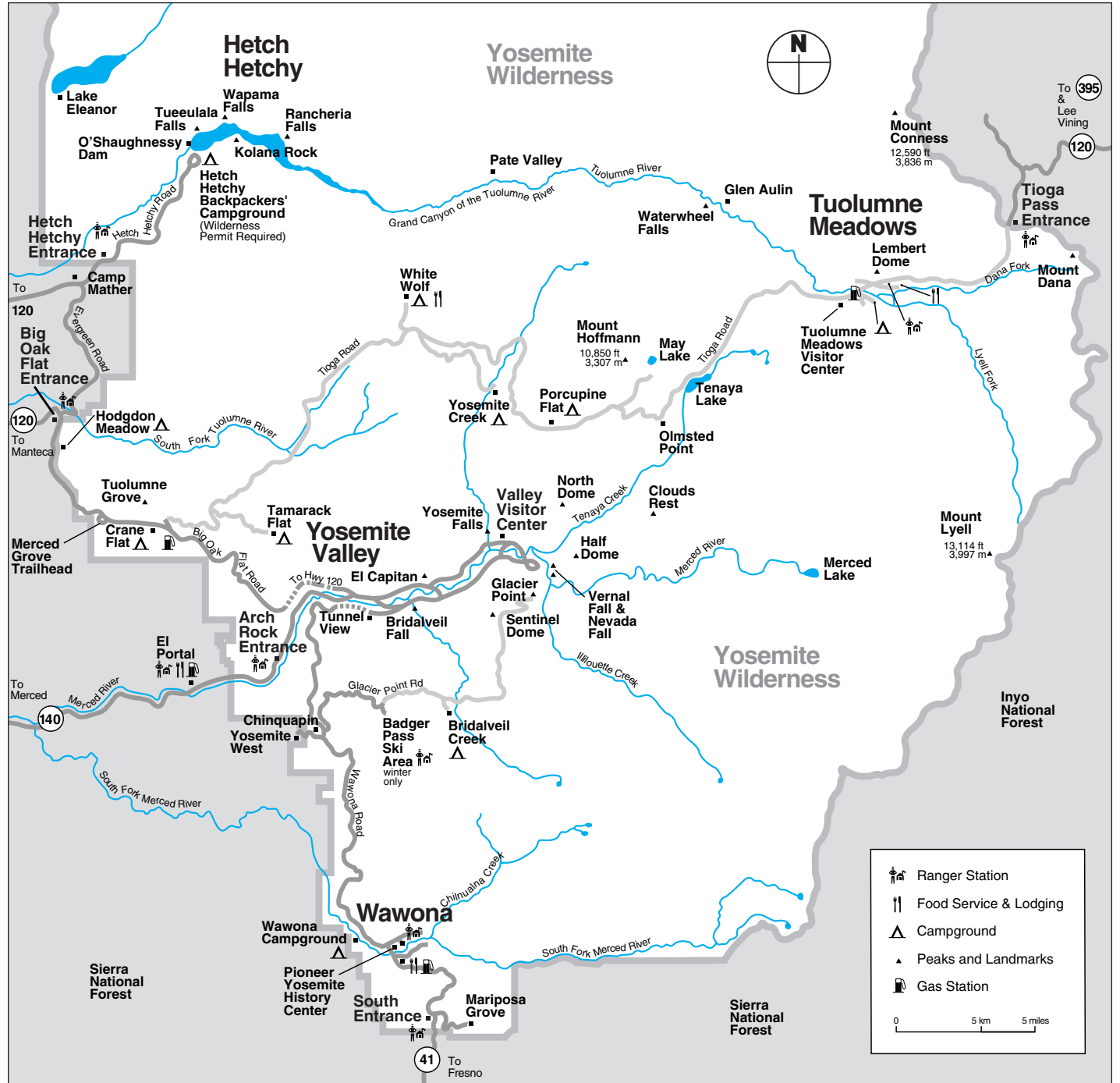
Due to construction, you may experience short delays or temporary detours on some park roads. Call 209/372-0200 for recorded road information.

Cascades Diversion Dam Removal in Progress

Please use caution when entering the intersection of El Portal and Big Oak Flat Roads in the west end of Yosemite Valley.

Easy Access to Lower Yosemite Fall

During construction at Lower Yosemite Fall, you are encouraged to park in the designated day-visitor lot at Yosemite Village and take the free shuttle bus as you explore the Valley.



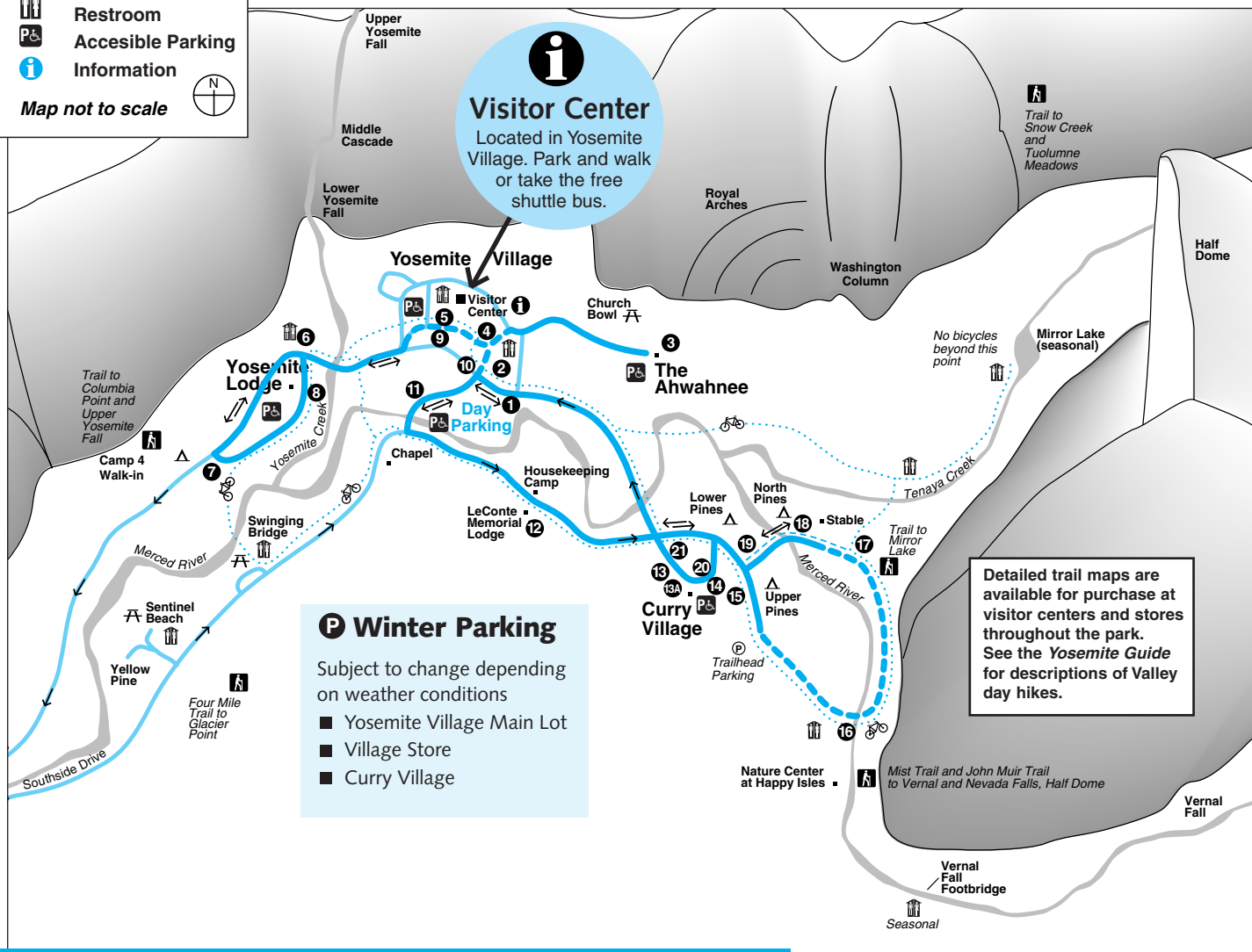
- Ranger Station
- Food Service & Lodging
- Campground
- Peaks and Landmarks
- Gas Station

0 5 km 5 miles

- Shuttle Bus Route
- Roadway
- Shuttle Bus Only
- Shuttle Bus Stop
- Trailhead
- Bike Path
- Campground
- Picnic Area
- Restroom
- Accessible Parking
- Information

Map not to scale

Yosemite Valley Shuttle Bus Map



Ride the Free Yosemite Valley Shuttle Bus

Schedules and routes may vary. Check time table at each stop.

Shuttle buses operate daily at 30-minute intervals. All buses follow the same route, serving stops in numerical order.

SCHEDULE
7:00 a.m. - 10:00 p.m.

- 1 Yosemite Village/Day Parking
- 2 Yosemite Village
- 3 The Ahwahnee
- 4 Yosemite Village/Degnan's Complex
- 5 Visitor Center
- 6 Lower Yosemite Fall
Service ends at dark
- 7 Camp 4/Yosemite Falls Trailhead
- 8 Yosemite Lodge
- 9 Visitor Center
- 10 Yosemite Village
- 11 Sentinel Bridge/Yosemite Chapel
- 12 Housekeeping Camp/
LeConte Memorial Lodge
- 13 Ice Skating Rink
- 13A Curry Village Registration Desk
- 14 Curry Village Parking
- 15 to 18 Service closed for season
- 19 Upper Pines Campground
- 20 Curry Village Parking
- 21 Ice Skating Rink

YOSEMITE AREA REGIONAL TRANSPORTATION SYSTEM

YARTS For bus schedules to and from the Yosemite area, call 1-877-98-YARTS or visit YARTS online at www.yarts.com

Scheduled Events

Programs listed in color are especially for children and families.

NPS = National Park Service
DNC = Delaware North Corporation at Yosemite
AAG = The Ansel Adams Gallery
\$ = Programs offered for a fee



Indicates programs and facilities accessible for visitors in wheelchairs, with assistance.

	SUNDAY	MONDAY	TUESDAY	WEDNESDAY
Yosemite Valley	<p>9:00am Photography Walk 2 hrs. Limited space, advance sign up required. Meet at The Ansel Adams Gallery weather permitting (AAG)</p> <p>11:00am WEE WILD ONES 45 min. Stories and activities for kids 6 & under. The Ahwahnee Great Lounge fireplace (DNC) &</p> <p>2:00pm Ranger Walk—A Changing Yosemite 1 1/2 hrs. Meet in front of Visitor Center (NPS)</p> <p>7:30pm Film—Ansel Adams 1 hr. Yosemite Lodge, check local postings for venue (AAG) &</p>	<p>11:00am CHILDREN'S STORY TIME (December 22 and 29 only) 1 hr. Degnan's Loft, children must be accompanied by an adult Shuttle stop #4 (DNC)</p> <p>2:00pm Ranger Walk—Yosemite's First People 1 1/2 hrs. Meet in front of Yosemite Museum (NPS)</p> <p>7:30pm Evening Program (except December 22 and 29) 1 hr. Yosemite Lodge, check local postings for venue (DNC/NPS) &</p>	<p>9:00am Photography Walk 2 hrs. Limited space, advance sign up required. Meet at The Ansel Adams Gallery, weather permitting (AAG)</p> <p>12:00pm Yosemite Forum—Fire in Riparian Areas (December 9 only) 1 hr. Interactive lecture with research landscape ecologist, Carolyn Hunsaker Visitor Center West Auditorium (NPS) &</p> <p>2:00pm Ranger Walk—Trees 1 1/2 hrs. The Ahwahnee, shuttle stop #3 (NPS)</p> <p>7:30pm Evening Program 1 hr. Yosemite Lodge, check local postings for venue (DNC) &</p>	<p>11:00am WEE WILD ONES (except December 22 and 29) 45 min. Stories and activities for kids 6 & under. The Ahwahnee Great Lounge fireplace (DNC) &</p> <p>2:00pm Ranger Walk—Yosemite's First People 1 1/2 hrs. Meet in front of Yosemite Museum (NPS)</p> <p>7:30pm Evening Program (except December 22 and 29) 1 hr. Yosemite Lodge, check local postings for venue (DNC/NPS) &</p>



Glacier Point as seen from Yosemite Valley
 Photo by RH Anderson

Yosemite Valley

Visitor Center Temporarily Relocated

While the Yosemite Valley Visitor Center is undergoing renovation this winter, park rangers and the Yosemite Association bookstore will be located between The Ansel Adams Gallery and Valley Post Office in Yosemite Village (shuttle stops #5 and #9).

Valley Visitor Center

Open 9:00 a.m. to 5:00 p.m. (noon to 5:00 p.m. December 25)
 Information, maps, books, and exhibits. Bear canister rental and self-registration for wilderness permits. & TTY

FILM

Spirit of Yosemite

This inspiring state-of-the-art visitor orientation film provides a stunning overview of Yosemite's splendor. It is shown every 30 minutes from Monday to Saturday 9:00 a.m. to 4:30 p.m., and Sunday noon to 4:30 p.m. (noon to 5:00 p.m. December 25) in the Visitor Center's West Auditorium Theater. Closed captioning available. & CC

Yosemite Museum

Located in Yosemite Village next to the Valley Visitor Center. &

FEATURES

Indian Cultural Exhibit

Open 9:00 a.m. to noon and 1:00 p.m. to 5:00 p.m. (noon to 5:00 p.m. December 25) Displays interpret the cultural history of Yosemite's native Miwok and Paiute people from 1850 to the present. Demonstrations of traditional skills are presented. No food or drink permitted.

Yosemite Museum Store

Open 9:30 a.m. to noon and 1:00 p.m. to 5:00 p.m. (noon to 5:00 p.m. December 25) Offering traditional American Indian arts and crafts and books on related subjects.

The Indian Village of Ahwahnee

Located behind the Yosemite Museum and open during daylight hours. Occasionally, Indian Cultural Program staff provide demonstrations or programs about Ahwahneechee skills and culture. &

Yosemite Cemetery

This historic cemetery is located across the street and just west of the Yosemite Museum. People buried here include American Indians and others who played an important role in the development of what is now Yosemite National Park. A *Guide to the Yosemite Cemetery* is available at the Valley Visitor Center.

The Ansel Adams Gallery

Open 9:00 a.m. to 5:00 p.m. Located in Yosemite Village next to the Valley Visitor Center. The Gallery offers work of Ansel Adams, contemporary photographers, and other fine artists. In addition, handcrafts, books, gifts, photography supplies, and camera/tripod rentals are available. For more information, call the Gallery at 209/372-4413 or visit their web site at www.anseladams.com. &

GALLERY EXHIBITS Through December 14

The Gallery's fall exhibit highlights a new body of work by photographer, Carol Henry, including prints made using glass, paper, and found objects. Her use of color, form, and light creates photographic images that are unique and profound.

Beginning December 16

The winter exhibit presents the lyrical black and white photography of Roman Loranc, who brings an Old World romanticism to his images of the California landscape. Born in Poland, Roman emigrated to the U.S. in 1982, eventually settling in the Central Valley of California. Loranc's first book, *Two Hearted Oak*, will also be featured at The Gallery.

SPECIAL EVENT

December 20

- 1:00 to 3:00 p.m.
Book signing with Roman Loranc
- 3:00 to 5:00 p.m.
Artist's reception and holiday open house

Yosemite Winter Theatre

Actor Lee Stetson portrays John Muir in *The Spirit of John Muir: Stories of Ice and Snow* as he delights audiences with tales of Muir's daring winter adventures. This 1-hour show is held at the Yosemite Lodge Cliff Room (see schedule above). Tickets are \$7.50/adults and \$3.25/children 12 and under and may be purchased in advance from the Yosemite Lodge tour desk, or if seating is available, at the door. &

A Yosemite Holiday To Remember

December 14, 2003 to January 1, 2004

Caroling, concerts, & holiday cheer will ring throughout Yosemite Valley!

Check local listings for a schedule of special events.

Family Winter Celebration

Join park staff for an afternoon of crafts, walks, and winter fun!

JANUARY 3
 1:00 - 4:00 p.m.
 Curry Village Guest Lot

Yosemite Today

Published by the National Park Service, in cooperation with DNC Parks & Resorts at Yosemite

Editor **Andy Fristensky**
 Design / Production **Skip Gaynard Designs**
 Printing **Casey Printing, Inc.**

We're Interested . . .

We are always looking for ways to improve our visitor publications. You can help by sending your comments via e-mail to Kristina_Rylands@nps.gov or fax to 209/379-1295.

December 2, 2003- January 5, 2004

WEDNESDAY	THURSDAY	FRIDAY	SATURDAY
<p>WILD ONES (December 24) 1. Stories and activities for kids 6 & under. Meet at The Ahwahnee Great Lounge fire place (DNC) &</p> <p>Ranger Walk—Granite & Ice 1. Meet in front of Visitor Center</p> <p>Evening Program (December 24 and 31) Yosemite Lodge, check local postings for venue (DNC/NPS) &</p>	<p>9:00am Photography Walk 2 hrs. Limited space, advance sign up required. Meet at The Ansel Adams Gallery, weather permitting (AAG)</p> <p>11:00am WEE WILD ONES (December 26 only) 45 min. Stories and activities for kids 6 & under. The Ahwahnee Great Lounge fire place (DNC) &</p> <p>2:00pm Ranger Walk—Bears 1½ hrs. Curry Village Amphitheater (NPS)</p> <p>7:30pm Evening Program 1 hr. Yosemite Lodge, check local postings for venue (DNC) &</p> <p>Winter Theater LIVE—The Spirit of John Muir: Stories of Ice and Snow (begins December 18) 1 hr. Yosemite Lodge Cliff Room. Tickets at Lodge tour desk or at door, if available \$ (DNC) &</p>	<p>2:00pm Ranger Walk—Rivers and Waterfalls 1½ hrs. Meet at Sentinel Bridge Shuttle stop #11 (NPS)</p> <p>7:30pm Evening Program (except December 26) 1 hr. Yosemite Lodge, check local postings for venue (DNC/NPS) &</p> <p>Winter Theater LIVE—The Spirit of John Muir: Stories of Ice and Snow (December 26 only) 1 hr. Yosemite Lodge Cliff Room. Tickets at Lodge tour desk or at door, if available \$ (DNC) &</p>	<p>9:00am Photography Walk 2 hrs. Limited space, advance sign up required. Meet at The Ansel Adams Gallery weather permitting (AAG)</p> <p>1:00pm FAMILY WINTER CELEBRATION (January 3 only) 3 hrs. See details below</p> <p>2:00pm Ranger Walk—Yosemite's Legacy (except January 3) 1½ hrs. Meet at front of Visitor Center (NPS)</p> <p>3:00pm Fine Print Viewing 1 hr. Very limited space. Sign up in advance. Meet in The Ansel Adams Gallery (AAG)</p> <p>4:00pm CHILDREN'S STORY TIME ½ hr. Degnan's Loft, shuttle stop #4 Children 7 and under & must be accompanied (AAG)</p> <p>7:30pm Evening Program (except December 20) 1 hr. Yosemite Lodge, check local postings for venue (DNC/NPS) &</p> <p>Winter Theater LIVE—The Spirit of John Muir: Stories of Ice and Snow (January 3 only) 1 hr. Yosemite Lodge Cliff Room. Tickets at Lodge tour desk or at door, if available \$ (DNC) &</p>

Wawona

Pioneer Yosemite History Center

(Possible construction-related closure during first week of December.)

Visit the Pioneer Yosemite History Center and see old log cabins and buildings from Yosemite's early days. You can also learn about the growth and development of Yosemite and the national park idea in America. If the Wawona Covered Bridge is closed for restoration, you can walk to the Pioneer Yosemite History Center from the parking area on Chilnualna Falls Road. Informational signs are located in front of the buildings at the Pioneer Yosemite History Center.

Holidays at Wawona Hotel

December 12 - 14; December 19 - January 4

Tree lighting, Santa, caroling, and ringing in the new year! Check at Wawona Hotel for schedule of events.

Badger Pass

Opens for season December 12, weather permitting

Badger Pass, California's oldest operating ski area, is the center of Yosemite ski and snowboarding activity during the winter. It is located at 7,200 feet in elevation and is a 1-hour drive from Yosemite Valley on the Glacier Point Road. There are 10 runs, 3 ski lifts, downhill and cross-country ski schools, ski rentals, and a day lodge. Cross-country skiers will find groomed and ungroomed trails that originate at Badger Pass; tracks are groomed on the Glacier Point Road all the way to Glacier Point. Wilderness permits available at the Badger Pass A-frame. Call 209/372-1000 for ski conditions.

Badger Pass Bus

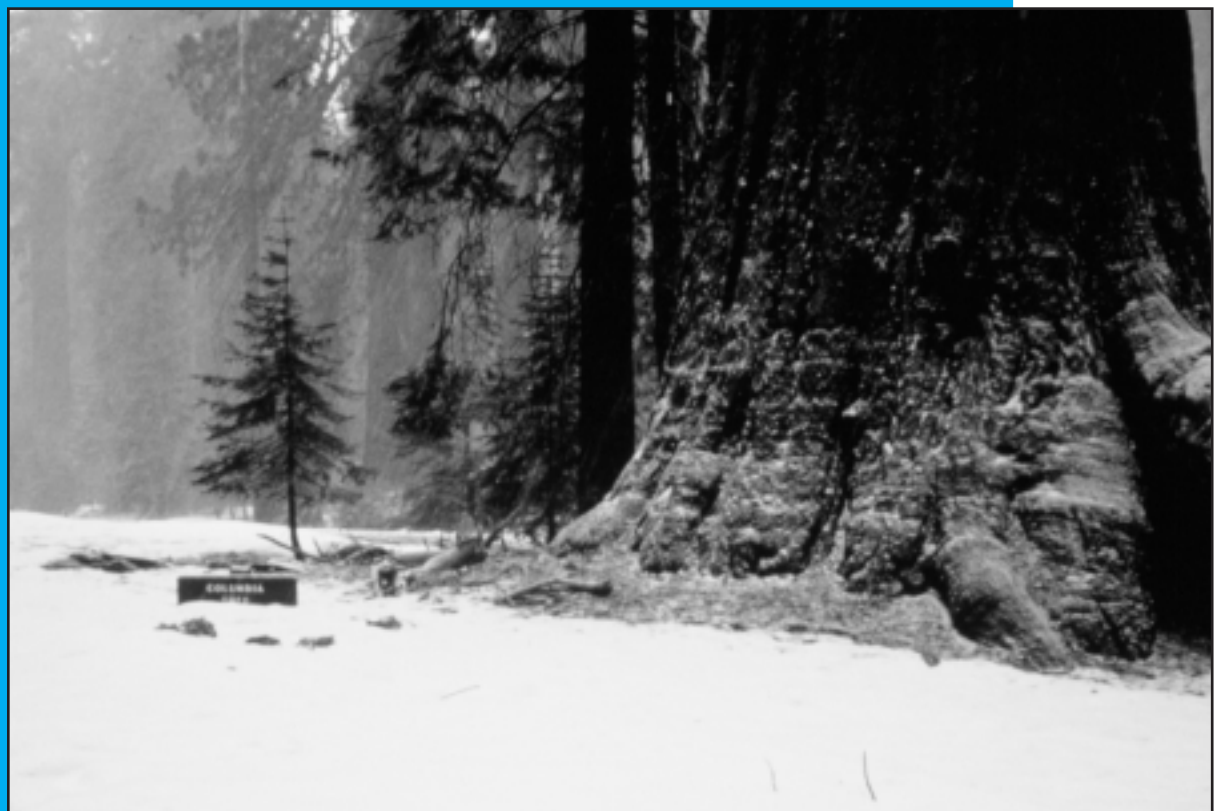
Ride the free bus to Badger Pass Ski Area (bus begins running when ski area opens for the season). Road and weather conditions permitting, the bus leaves daily from Curry Village at 8:05 a.m., and 10:35 a.m., Yosemite Village at 8:10 a.m. and 10:40 a.m., The Ahwahnee at 8:15 a.m. and 10:45 a.m., and Yosemite Lodge at 8:30 a.m. and 11:00 a.m. Return buses leave Badger Pass at 2:00 pm and 4:30 p.m. Several buses operate on busy days. Allow at least one hour for a one-way trip. Additional information is available at hotel front desks.

10:30 a.m. Daily Ranger Snowshoe Walk Explore the Forest in Winter

(Begins December 13)

2 hrs. Badger Pass A-frame. Wear warm clothing and boots for this moderate/strenuous walk. Snowshoes provided, although not recommended for children under 10 yrs. \$

NOTE: Snowshoe walks will be canceled if the Badger Pass Road closes, or if weather conditions are too severe.



Sequoia Groves in Winter

*Mariposa Grove of Giant Sequoias
NPS Photo*

Mariposa Grove

The Mariposa Grove of Giant Sequoias, located at the southern-most end of Yosemite, is the largest stand of giant sequoias in the park (about 500 trees). Allow 1¼ hours driving time from Yosemite Valley. Cars are prohibited beyond the parking area; however, many giant sequoias can be seen from there. From the parking area, all trails in the Mariposa Grove of Giant Sequoias are uphill. The trailhead is located at the far end of the parking area. Interpretive signs between the trailhead and the Grizzly Giant provide a self-guiding tour. Written translations of these signs are available at the trailhead (German, French, Spanish, Japanese).

In winter, the access road to the Grove is closed due to snow. Once the access road is closed, add an extra hour or two for the 2-mile walk from the South Entrance of the park to the Grove.

Merced Grove

Yosemite's quietest stand of sequoias is the Merced Grove, accessible only on foot. It's a 2-mile hike or ski into the grove from the Big Oak Flat Road (Highway 120 West). Located 3.5 miles north of Crane Flat or 4.5 miles south of the Big Oak Flat Entrance Station, the trailhead is marked by a post labeled B-10 and a road sign. Allow about 3 hours for the 4-mile round-trip hike or ski to this small group of sequoias (about 20 trees).

Tuolumne Grove

The Tuolumne Grove of Giant Sequoias is near Crane Flat at the intersection of the Big Oak Flat Road and the Tioga Road. The former route of the old Big Oak Flat Road leads downhill from Crane Flat into the Tuolumne Grove, a cluster of about 25 sequoias. Now closed to cars, this 2-mile round-trip walk or ski is relatively easy, depending on conditions; however, it is moderately strenuous on the uphill return.

Park Facilities and Services

ATM

Yosemite Village
South of Village Store (Bank of America)
Inside Village Store

Yosemite Lodge
Inside main registration area

Curry Village
Inside gift/grocery store

Wawona
Inside Wawona Store

El Portal
On Highway 140 at the Yosemite View Lodge and the El Portal Market.

Babysitting

Limited babysitting available for registered guests at Yosemite Lodge and The Ahwahnee. Call front desk or concierge for additional information.

Food & Beverage Service

These hours of operation are approximate. Current hours of operation are posted at each front desk or facility.

BADGER PASS

All facilities open December 12 weather permitting

Skiers Grill

8:00 a.m. to 4:30 p.m.

Snowflake Room

Friday – Sunday and holidays

10:00 a.m. to 5:00 p.m.

YOSEMITE VILLAGE

Degnan's Delicatessen

7:00 a.m. to 5:00 p.m.

YOSEMITE LODGE

Coffee Corner

6:30 a.m. to noon

Food Court

Through December 18

Breakfast – 6:30 a.m. to 10:30 a.m.

Lunch – 11:30 a.m. to 1:30 p.m.

Dinner – 5:00 p.m. to 7:30 p.m.

December 19 – January 3

Breakfast – 6:30 a.m. to 10:30 a.m.

Lunch – 11:30 a.m. to 2:00 p.m.

Dinner – 4:30 p.m. to 8:00 p.m.

Light menu served between meal periods

Mountain Room Bar & Lounge

4:30 p.m. to 10:30 p.m. weekdays

Noon to 10:30 p.m. weekends

December 20 – January 4 noon to 10:30 p.m.

December 31 noon to 1:00 a.m.

Mountain Room Restaurant

5:00 p.m. to 8:30 p.m. Sunday – Thursday

5:00 p.m. to 9:00 p.m. Friday & Saturday

December 19–January 3 5:00 p.m. to 9:00 p.m.

December 25 2:00 p.m. to 9:00 p.m.

December 31 5:00 p.m. to 10:00 p.m.

THE AHWAHNEE

Dining Room

Breakfast – 7:00 a.m. to 10:30 a.m., Mon – Sat

Lunch – 11:30 a.m. to 3:00 p.m., Mon – Sat

Sunday Brunch – 7:00 a.m. to 3:00 p.m.

Except December 14. Regular breakfast and lunch will be served.

Dinner – 5:30 p.m. to 9:00 p.m.

Reservations and appropriate attire are respectfully requested. 209/372-1489

The Ahwahnee Bar

11:00 a.m. to 11:00 p.m.

Food Service – 11:00 a.m. to 9:00 p.m.

CURRY VILLAGE

Coffee Corner

December 20–January 4 7:00 a.m. to 11:00 a.m.

Pizza

December 19 & 20 5:00 p.m. to 9:00 p.m.

December 21–January 3 noon to 9:00 p.m.

WAWONA HOTEL

Open December 12–14, December 19–January 4 (opens with dinner at 5:00 p.m. and closes after breakfast at 11:30 a.m.)

Dining Room

Breakfast – 7:30 a.m. to 10:00 a.m.

Lunch – 11:30 a.m. to 1:30 p.m.

Dinner – 5:30 p.m. to 9:00 p.m.

December 25

Breakfast – 7:30 a.m. to 10:00 a.m.

Dinner – noon to 9:00 p.m.

December 31

Breakfast – 7:30 a.m. to 10:00 a.m.

Dinner – 5:30 p.m. to 7:00 p.m.

Reservations taken for 8 or more. 209/375-1425

Gas Station

Wawona

9:00 a.m. to 6:00 p.m. Diesel & propane available.

Pay at the pump 24 hours with credit or debit card.

Crane Flat

9:00 a.m. to 5:00 p.m. Diesel available.

Pay at the pump 24 hours with credit or debit card.

El Portal

9:00 a.m. to noon and 2:00 p.m. to 5:00 p.m.

Diesel available. Pay at the pump 24 hours with credit or debit card.

Gifts, Books, & Apparel

YOSEMITE VILLAGE

The Ansel Adams Gallery

9:00 a.m. to 5:00 p.m.

Yosemite Bookstore

Inside Visitor Center

9:00 a.m. to 5:00 p.m.

December 25 noon to 5:00 p.m.

Yosemite Museum Store

9:30 a.m. to noon, 1:00 p.m. to 5:00 p.m.

December 25 noon to 5:00 p.m.

Village Store 8:00 a.m. to 8:00 p.m.

December 24 8:00 a.m. to 6:00 p.m.

December 25 10:00 a.m. to 7:00 p.m.

Habitat Yosemite

9:00 a.m. to 3:00 p.m. Sunday – Thursday

9:00 a.m. to 5:00 p.m. Friday & Saturday

December 25 10:00 a.m. to 2:00 p.m.

Sport Shop 8:30 a.m. to 5:00 p.m.

YOSEMITE LODGE

Gift/Grocery 8:00 a.m. to 8:00 p.m.

Nature Shop 11:00 a.m. to 6:00 p.m.

THE AHWAHNEE

Gift Shop 8:00 a.m. to 10:00 p.m.

Sweet Shop 7:00 a.m. to 10:00 p.m.

CURRY VILLAGE

Mountain Shop

8:30 a.m. to 6:00 p.m. Sunday – Thursday

8:00 a.m. to 7:00 p.m. Friday & Saturday

Gift/Grocery

8:00 a.m. to 8:00 p.m. Sunday – Thursday

8:00 a.m. to 9:00 p.m. Friday & Saturday

WAWONA

Pioneer Gift Shop/Grocery

8:00 a.m. to 6:00 p.m.

December 25 10:00 a.m. to 5:00 p.m.

Groceries

Yosemite Lodge Gift/Grocery

8:00 a.m. to 8:00 p.m.

Village Store 8:00 a.m. to 8:00 p.m.

December 24 8:00 a.m. to 6:00 p.m.

December 25 10:00 a.m. to 7:00 p.m.

Degnan's Delicatessen

7:00 a.m. to 5:00 p.m.

Curry Village Gift/Grocery

8:00 a.m. to 8:00 p.m. Sunday – Thursday

8:00 a.m. to 9:00 p.m. Friday & Saturday

Wawona Grocery Store

8:00 a.m. to 6:00 p.m.

December 25 10:00 a.m. to 5:00 p.m.

Crane Flat

9:00 a.m. to 5:00 p.m.

El Portal Market *Closed December 25 and January 1*

9:00 a.m. to 7:00 p.m.

9:00 a.m. to 6:00 p.m. December 24

Showers & Laundromat

SHOWERS

Curry Village 24 hours

LAUNDROMAT

Housekeeping Camp

8:00 a.m. to 10:00 p.m.

Recycling

Village Store Recycling Center

Noon to 4:00 p.m. Tuesday, Thursday, and Saturday

Post Offices

Main Post Office - Yosemite Village

Monday – Friday 8:30 a.m. to 5:00 p.m.

Saturday 10:00 a.m. to noon

Yosemite Lodge Post Office

Monday – Thursday 11:30 a.m. to 2:45 p.m.

Friday 11:30 a.m. to 4:30 p.m.

Wawona Post Office

Monday – Friday 9:00 a.m. to 5:00 p.m.

Saturday 9:00 a.m. to noon

El Portal Post Office

Monday – Friday 8:30 a.m. to 12:30 p.m.,

1:30 p.m. to 5:00 p.m.

Auto Service, Towing, and Repair (AAA)

Village Garage

8:00 a.m. to noon, 1:00 p.m. to 5:00 p.m.

Towing 24 hours. Propane available until 4:00 p.m.

209/372-8320

Service Organizations

Al-Anon

Wednesday 7:00 p.m. DNC General Office Building

(Executive conference room) Yosemite Village

No meetings on December 24 or 31.

Alcoholics Anonymous

Sunday 8:30 p.m.

Tuesday, and Thursday 7:30 p.m.

DNC General Office Building

(Employee Training Center) Yosemite Village

Narcotics Anonymous

Saturday 8:00 p.m.

DNC General Office Building

(Employee Training Center) Yosemite Village

Lions Club

Meets first and third Thursdays of each month

at noon, The Ahwahnee.

Call 209/372-4475 for information.

Rotary International

Meets Thursdays for lunch at noon in

The Ahwahnee Mural Room. Visiting Rotarian

families and guests welcome. For meeting

reservations or information, call 209/372-1401.

Religious Services

YOSEMITE COMMUNITY CHURCH

(Nondenominational Christian)

Pastor Brent Moore 209/372-4831

Yosemite Valley Chapel (year-round)

Worship Services

Sunday 9:15 a.m. (with Children's Church)

Thursday 7:00 p.m. (and bible study)

December 24 5:00 p.m. Candlelight Service

December 31 10:30 p.m. Nightwatch Service

ROMAN CATHOLIC

Rev. Raymond J. Duffy 209/372-4729

Mass in Yosemite Valley

Visitor Center West Auditorium

Sunday 10:00 a.m.

December 25 10:00 a.m.

CHURCH OF CHRIST

Ron Skelton 209/379-2307

El Portal Chapel

Worship Service

Sunday 9:00 a.m.

CROSSWAY CHURCH

(Christian Protestant)

Pastor Steve Hughes 209/379-2428

Worship Service

Sunday 7:00 p.m. Yosemite Chapel

Men's Bible Study

Wednesday 7:00 p.m.

Women's Bible Study

Call for time and location

EL PORTAL COMMUNITY CHURCH

Pastor Russ Marsh 209/379-2255

El Portal Chapel

Worship Service

First and third Saturday 7:30 p.m.

Second, fourth, and fifth Sunday 10:30 a.m.

WAWONA CHRISTIAN FELLOWSHIP

Pastor David Adamcik 209/966-3039

Wawona Community Center

Worship Service

Sunday 9:00 a.m.

Women's Bible Study

Wednesday 1:00 p.m.

General Park Information

Emergency 911

Fire – Police – Medical Emergency:
Dial 911, 24 hours a day (from hotel room 9-911)

Information

Road and Weather

General Park Information

209/372-0200 www.nps.gov/yose

Campground Reservations

800/436-7275 reservations.nps.gov

Ski/Snow Conditions

209/372-1000

Medical

Yosemite Medical Clinic

Emergency care: 24 hours daily

Drop-in and Urgent Care

Daily 8:00