



Experience
Your
America

Yosemite Today

January 6 -
February 2, 2004

Yosemite National Park

ROAD INFO

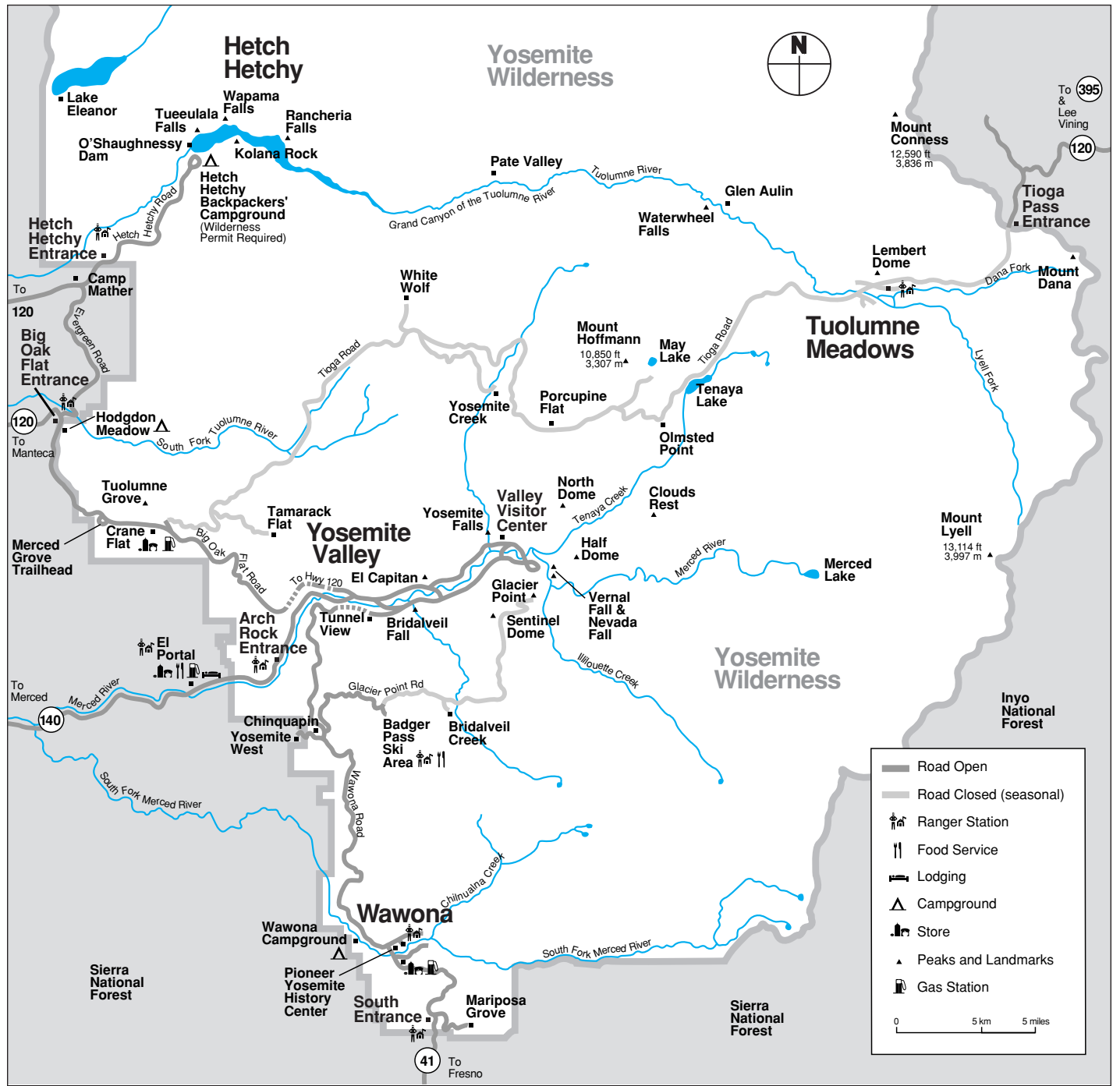
Due to construction, you may experience short delays or temporary detours on some park roads. Call 209/372-0200 for recorded road information.

Cascades Diversion Dam Removal in Progress

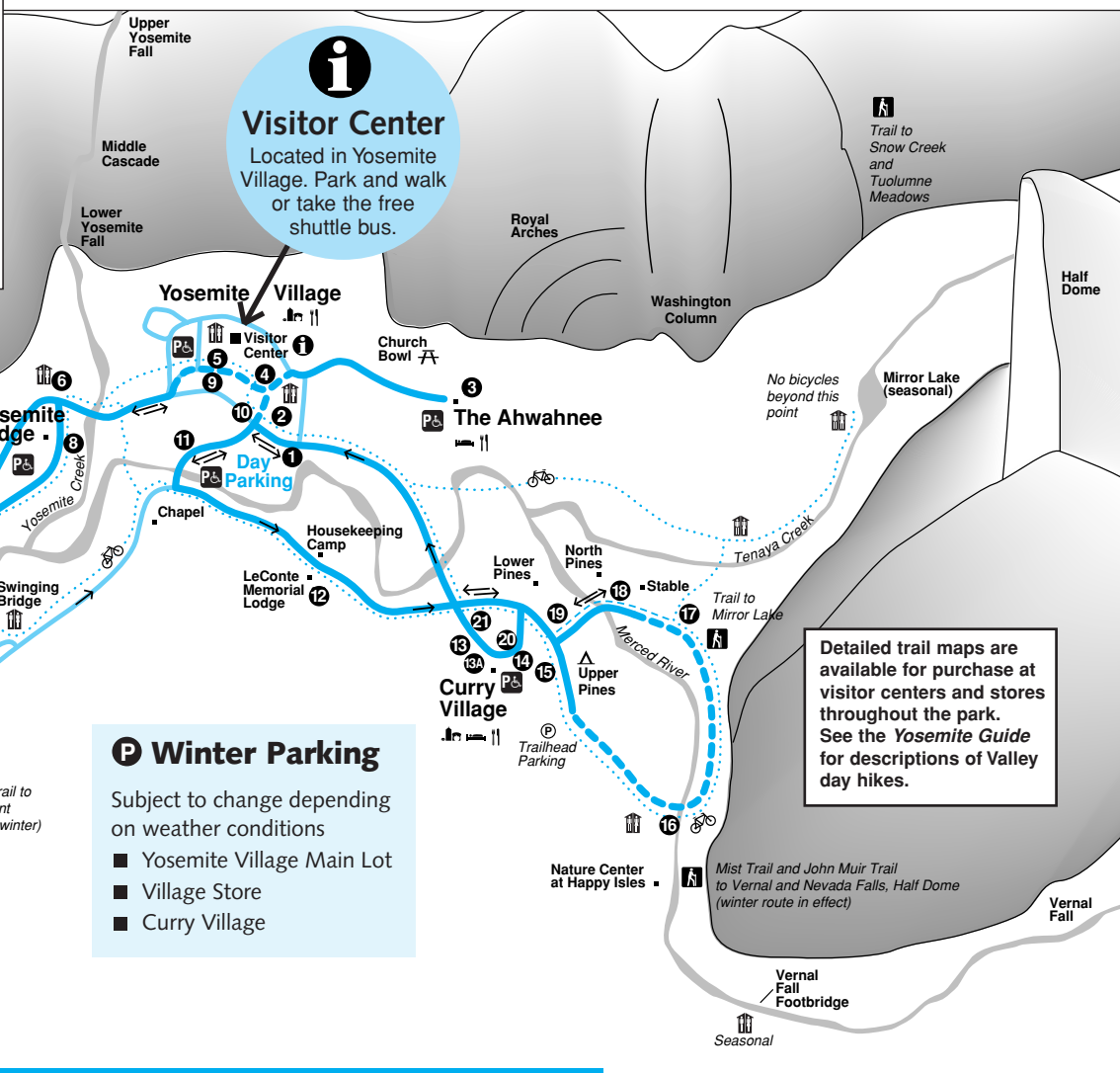
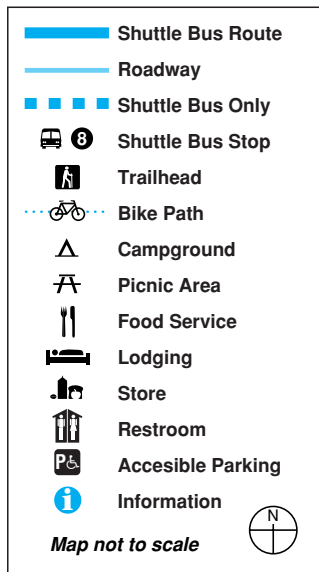
Please use caution when entering the intersection of El Portal and Big Oak Flat Roads in the west end of Yosemite Valley.

Easy Access to Lower Yosemite Fall

During construction at Lower Yosemite Fall, you are encouraged to park in the designated day-visitor lot at Yosemite Village and take the free shuttle bus as you explore the Valley.



Yosemite Valley Shuttle Bus Map



Ride the Free Yosemite Valley Shuttle Bus

Check time table at each stop.

Shuttle buses operate daily at 30-minute intervals except Friday and Saturday when intervals are 20 minutes. All buses follow the same route, serving stops in numerical order.

SCHEDULE

7:00 a.m. - 10:00 p.m.

- 1 Yosemite Village/Day Parking
- 2 Yosemite Village
- 3 The Ahwahnee
- 4 Yosemite Village/Degnan's Complex
- 5 Visitor Center
- 6 Lower Yosemite Fall
- 7 Camp 4/Yosemite Falls Trailhead
- 8 Yosemite Lodge
- 9 Visitor Center
- 10 Yosemite Village
- 11 Sentinel Bridge/Yosemite Chapel
- 12 Housekeeping Camp/LeConte Memorial Lodge
- 13 Ice Skating Rink
- 13A Curry Village Registration Desk
- 14 Curry Village Parking
- 15 to 18 Service closed for season
- 19 Upper Pines Campground
- 20 Curry Village Parking
- 21 Ice Skating Rink

YOSEMITE AREA REGIONAL TRANSPORTATION SYSTEM



For bus schedules to and from the Yosemite area, call 1-877-98-YARTS or visit YARTS online at www.yarts.com

Scheduled Events

Programs listed in color are especially for children and families.

NPS = National Park Service
DNC = Delaware North Corporation at Yosemite
AAG = The Ansel Adams Gallery
\$ = Programs offered for a fee



Indicates programs and facilities accessible for visitors in wheelchairs, with assistance.

	SUNDAY	MONDAY	TUESDAY	WEDNESDAY
Yosemite Valley	<p>11:00am WEE WILD ONES 45 min. Stories and activities for kids 6 & under. The Ahwahnee Great Lounge fireplace (DNC) &</p> <p>2:00pm Ranger Walk—Yosemite's First People 1½ hrs. Meet in front of Yosemite Museum (NPS)</p> <p>7:30pm Film—Ansel Adams 1 hr. Yosemite Lodge, check local postings for venue (AAG) &</p>	<p>2:00pm Ranger Walk—A Changing Yosemite 1½ hrs. Meet in front of Visitor Center (NPS)</p> <p>7:30pm Evening Program 1 hr. Yosemite Lodge, check local postings for venue (DNC/NPS) &</p>	<p>9:00am Photography Walk 2 hrs. Limited space, advance sign up required. Meet at The Ansel Adams Gallery, weather and availability of photographer permitting (AAG)</p> <p>12:00pm Yosemite Forum (January 13 only) 1 hr. Interactive lecture with a Sierra Nevada researcher Visitor Center West Auditorium (NPS) &</p> <p>2:00pm Ranger Walk—Yosemite's Legacy 1½ hrs. Meet in front of Visitor Center (NPS)</p> <p>7:30pm Evening Program 1 hr. Yosemite Lodge, check local postings for venue (DNC) &</p>	<p>11:00am WEE WILD ONES (except on Wednesdays) 45 min. Stories and activities for kids 6 & under. The Ahwahnee Great Lounge fireplace (DNC) &</p> <p>2:00pm Ranger Walk—Yosemite's First People 1½ hrs. Meet in front of Yosemite Museum (NPS)</p> <p>7:30pm Evening Program 1 hr. Yosemite Lodge, check local postings for venue (DNC/NPS) &</p>
Badger Pass	<p>10:30am Ranger Snowshoe Walk 2 hrs. Moderate/strenuous walk See details below Badger Pass A-frame (NPS) \$</p>	<p>10:30am Ranger Snowshoe Walk 2 hrs. Moderate/strenuous walk See details below Badger Pass A-frame (NPS) \$</p>	<p>10:30am Ranger Snowshoe Walk 2 hrs. Moderate/strenuous walk See details below Badger Pass A-frame (NPS) \$</p> <p>6:30pm Full Moon Snowshoe Walk (January 6 only) 2 hrs. No experience required. See details below Sign up in advance at any tour desk Badger Pass Lodge (DNC) \$</p>	<p>10:30am Ranger Snowshoe Walk 2 hrs. Moderate/strenuous walk See details below Badger Pass A-frame (NPS) \$</p> <p>6:30pm Full Moon Snowshoe Walk (January 6 only) 2 hrs. No experience required. See details below Sign up in advance at any tour desk Badger Pass Lodge (DNC) \$</p>



Glacier Point as seen from Yosemite Valley
 Photo by RH Anderson

Yosemite Valley

Visitor Center Temporarily Relocated

While the Yosemite Valley Visitor Center is undergoing renovation this winter, park rangers and the Yosemite Association bookstore will be located between The Ansel Adams Gallery and Valley Post Office in Yosemite Village (shuttle stops #5 and #9).

Valley Visitor Center

Open 9:00 a.m. to 5:00 p.m. Information, maps, books, and exhibits. Bear canister rental and self-registration for wilderness permits. & TTY

FILM

Spirit of Yosemite

This inspiring state-of-the-art visitor orientation film provides a stunning overview of Yosemite's splendor. It is shown every 30 minutes from Monday to Saturday 9:00 a.m. to 4:30 p.m., and Sunday noon to 4:30 p.m. in the Visitor Center's West Auditorium Theater. Closed captioning available. & CC

Yosemite Museum

Located in Yosemite Village next to the Valley Visitor Center. &

FEATURES

Indian Cultural Exhibit

Open 9:00 a.m. to noon and 1:00 p.m. to 5:00 p.m. Displays interpret the cultural history of Yosemite's native Miwok and Paiute people from 1850 to the present. Demonstrations of traditional skills are presented. No food or drink permitted.

The Indian Village of Ahwahnee

Located behind the Yosemite Museum and open during daylight hours. Occasionally, Indian Cultural Program staff provide demonstrations or programs about Ahwahneechee skills and culture. &

Yosemite Cemetery

This historic cemetery is located across the street and just west of the Yosemite Museum. People buried here include American Indians and others who played an important role in the development of what is now Yosemite National Park. A *Guide to the Yosemite Cemetery* is available at the Valley Visitor Center.

The Ansel Adams Gallery

Open 9:00 a.m. to 5:00 p.m. Located in Yosemite Village next to the Valley Visitor Center. The Gallery offers work of Ansel Adams, contemporary photographers, and other fine artists. In addition, handcrafts, books, gifts, photography supplies, and camera/tripod rentals are available. For more information, call the Gallery at 209/372-4413 or visit their web site at www.anseladams.com. &

GALLERY EXHIBITS Through February 2

The winter exhibit presents the lyrical black and white photography of Roman Loranc, who brings an Old World romanticism to his images of the California landscape. Born in Poland, Roman emigrated to the U.S. in 1982, eventually settling in the Central Valley of California. Loranc's first book, *Two Hearted Oak*, will also be featured at The Gallery.

Yosemite Today

Published by the National Park Service, in cooperation with DNC Parks & Resorts at Yosemite

Editor Andy Fristensky
Design / Production Skip Gaynard Designs
Printing Casey Printing, Inc.

We're Interested . . .

We are always looking for ways to improve our visitor publications. You can help by sending your comments via e-mail to Kristina_Rylands@nps.gov or fax to 209/379-1295.

**YOSEMITE
 OUTDOOR ADVENTURES**
 Yosemite Association Special Programs
Winter Ecology Ski Trek
 JANUARY 17

Storytelling for Grandparents and Parents
 JANUARY 24

Call The Yosemite Association at 209/379-2321 for details on both programs, or visit www.yosemite.org

January 6 - February 2, 2004

WEDNESDAY

WILD ONES
 (January 7)
 n. Stories and activities for kids 6 & 7.
 The Ahwahnee Great Lounge fire
 (DNC) &
Ranger Walk—Granite & Ice
 s. Meet in front of Visitor Center
Evening Program
 Yosemite Lodge, check local postings
 for venue (DNC/NPS) &

Ranger Snowshoe Walk
 Moderate/strenuous walk
 See details below
 Badger Pass A-frame (NPS) \$
Full Moon Snowshoe Walk
 (January 7 only)
 No experience required. See details below
 Sign up in advance at any tour desk
 Badger Pass Lodge (DNC) \$

THURSDAY

2:00pm **Ranger Walk—Bears**
 1½ hrs. Yosemite Lodge Amphitheater (NPS)
 7:30pm **Evening Program**
 1 hr. Yosemite Lodge, check local postings
 for venue (DNC) &
 7:30pm **FIRESIDE STORYTELLING**
 1 hr. The Ahwahnee Great Lounge
 fireplace (DNC) &

10:30am **Ranger Snowshoe Walk**
 2 hrs. Moderate/strenuous walk
 See details below
 Badger Pass A-frame (NPS) \$

FRIDAY

2:00pm **Ranger Walk—Rivers and Waterfalls**
 1½ hrs. Meet at Sentinel Bridge
 Shuttle stop #11 (NPS)
 7:30pm **Evening Program**
 1 hr. Yosemite Lodge, check local postings
 for venue (DNC/NPS) &

10:30am **Ranger Snowshoe Walk**
 2 hrs. Moderate/strenuous walk
 See details below
 Badger Pass A-frame (NPS) \$

SATURDAY

9:00am **Photography Walk**
 2 hrs. Limited space, advance sign up
 required. Meet at The Ansel Adams Gallery
 weather and availability of staff
 photographer permitting (AAG)
 2:00pm **Ranger Walk—Trees**
 1½ hrs. The Ahwahnee, shuttle stop #3
 (NPS)
 3:00pm **Fine Print Viewing**
 1 hr. Very limited space. Sign up in advance.
 Meet in The Ansel Adams Gallery (AAG)
 4:00pm **CHILDREN'S STORY TIME**
 ½ hr. Degnan's Loft, shuttle stop #4
 Children 7 and under & must be
 accompanied by an adult (AAG)
 7:30pm **Evening Program**
 1 hr. Yosemite Lodge, check local postings
 for venue (DNC/NPS) &

10:30am **Ranger Snowshoe Walk**
 2 hrs. Moderate/strenuous walk
 See details below
 Badger Pass A-frame (NPS) \$

Wawona

Pioneer Yosemite History Center

Visit the Pioneer Yosemite History Center and see old log cabins and buildings from Yosemite's early days. You can also learn about the growth and development of Yosemite and the national park idea in America. Informational signs are located in front of the buildings at the Pioneer Yosemite History Center.

Badger Pass

Badger Pass, California's oldest operating ski area, is the center of Yosemite ski and snowboarding activity during the winter. It is located at 7,200 feet in elevation and is a 1-hour drive from Yosemite Valley on the Glacier Point Road. There are 10 runs, 3 ski lifts, downhill and cross-country ski schools, ski rentals, and a day lodge. Cross-country skiers will find groomed and ungroomed trails that originate at Badger Pass; tracks are groomed on the Glacier Point Road all the way to Glacier Point. Wilderness permits available at the Badger Pass A-frame. Call 209/372-1000 for ski conditions.

Badger Pass Bus

Ride the free bus to Badger Pass Ski Area. Road and weather conditions permitting, the bus leaves daily from Curry Village at 7:45 a.m., and 10:30 a.m., Yosemite Village at 7:55 a.m. and 10:40 a.m., The Ahwahnee at 8:00 a.m. and 10:45 a.m., and Yosemite Lodge at 8:15 a.m. and 11:00 a.m. Return buses leave Badger Pass at 2:30 p.m. and 4:45 p.m. Several buses operate on busy days. Allow at least one hour for a one-way trip. Additional information is available at hotel front desks.

Ranger Snowshoe Walk—Explore the Forest in Winter

10:30 a.m., Daily

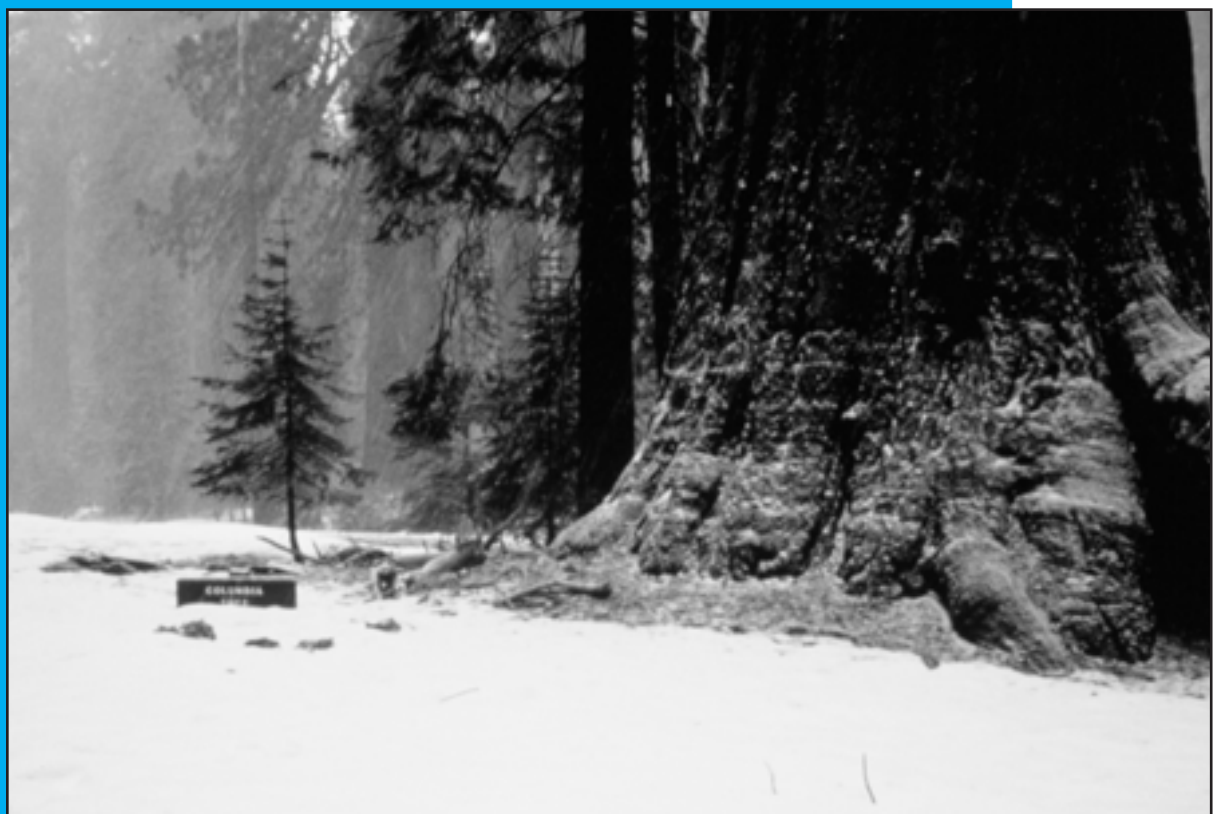
2 hrs. Badger Pass A-frame. Wear warm clothing and boots for this moderate/strenuous walk. Snowshoes provided, although not recommended for children under 10 yrs. \$

Full Moon Snowshoe Walks

January 6 and 7, 6:30 p.m.

Join an interpreter for a 2-3 mile walk in a moonlit winter wonderland. Watch the moon rise over majestic firs at Badger Pass. No experience necessary; however, this program is not recommended for children under 10 as it is moderately strenuous. Visit a tour desk, Badger Pass Lodge, or call 209/372-1240 or 559/252-4848 for required advance reservations.

NOTE: Snowshoe walks will be canceled if the Badger Pass Road closes, or if weather conditions are too severe.



Mariposa Grove of
Giant Sequoias
NPS Photo

Sequoia Groves in Winter

Mariposa Grove

The Mariposa Grove of Giant Sequoias, located at the southern-most end of Yosemite, is the largest stand of giant sequoias in the park (about 500 trees). Allow 1¼ hours driving time from Yosemite Valley. Cars are prohibited beyond the parking area; however, many giant sequoias can be seen from there. From the parking area, all trails in the Mariposa Grove of Giant Sequoias are uphill. The trailhead is located at the far end of the parking area. Interpretive signs between the trailhead and the Grizzly Giant provide a self-guiding tour. Written translations of these signs are available at the trailhead (German, French, Spanish, Japanese).

In winter, the access road to the Grove is closed due to snow. Once the access road is closed, add an extra hour or two for the 2-mile walk from the South Entrance of the park to the Grove.

Merced Grove

Yosemite's quietest stand of sequoias is the Merced Grove, accessible only on foot. It's a 2-mile hike or ski into the grove from the Big Oak Flat Road (Highway 120 West). Located 3.5 miles north of Crane Flat or 4.5 miles south of the Big Oak Flat Entrance Station, the trailhead is marked by a post labeled B-10 and a road sign. Allow about 3 hours for the 4-mile round-trip hike or ski to this small group of sequoias (about 20 trees).

Tuolumne Grove

The Tuolumne Grove of Giant Sequoias is near Crane Flat at the intersection of the Big Oak Flat Road and the Tioga Road. The former route of the old Big Oak Flat Road leads downhill from Crane Flat into the Tuolumne Grove, a cluster of about 25 sequoias. Now closed to cars, this 2-mile round-trip walk or ski is relatively easy, depending on conditions; however, it is moderately strenuous on the uphill return.



Park Facilities and Services

ATM

Yosemite Village
South of Village Store (Bank of America)
Inside Village Store

Yosemite Lodge
Inside main registration area

Curry Village
Inside gift/grocery store

Wawona
Inside Wawona Store

El Portal
On Highway 140 at the Yosemite View Lodge and the El Portal Market.

Babysitting

Limited babysitting available for registered guests at Yosemite Lodge and The Ahwahnee. Call front desk or concierge for additional information.

Food & Beverage Service

These hours of operation are approximate. Current hours of operation are posted at each front desk or facility.

BADGER PASS Skiers Grill
8:00 a.m. to 4:30 p.m.

Snowflake Room
Friday - Sunday and holidays
10:00 a.m. to 5:00 p.m.

YOSEMITE VILLAGE Degan's Delicatessen
7:00 a.m. to 5:00 p.m.

YOSEMITE LODGE Coffee Corner
6:30 a.m. to noon

Food Court
Breakfast - 6:30 a.m. to 10:30 a.m.
Lunch - 11:30 a.m. to 1:30 p.m.
Dinner - 5:00 p.m. to 7:30 p.m.

Mountain Room Bar & Lounge
4:30 p.m. to 10:30 p.m. weekdays
Noon to 10:30 p.m. weekends

Mountain Room Restaurant
5:00 p.m. to 8:30 p.m. Sunday - Thursday
5:00 p.m. to 9:00 p.m. Friday & Saturday

THE AHWAHNEE Dining Room
Breakfast - 7:00 a.m. to 10:30 a.m., Mon - Sat
Lunch - 11:30 a.m. to 3:00 p.m., Mon - Sat
Sunday Brunch - 7:00 a.m. to 3:00 p.m.
Dinner - 5:30 p.m. to 9:00 p.m.
Reservations and appropriate attire are respectfully requested. 209/372-1489

The Ahwahnee Bar
11:00 a.m. to 11:00 p.m.
Food Service - 11:00 a.m. to 10:00 p.m.

CURRY VILLAGE Pavilion
Breakfast Buffet -
January 17-19 7:00 a.m. to 10:00 a.m.
Dinner Buffet - 5:00 p.m. to 9:00 p.m. Saturdays

Coffee Corner
Weekends and January 19 7:00 a.m. to 10:00 a.m.

Pizza
5:00 p.m. to 9:00 p.m. Fridays
January 17 Noon to 4:00 p.m.
January 18 Noon to 9:00 p.m.

Gas Station

Wawona
9:00 a.m. to 6:00 p.m. Diesel & propane available.
Pay at the pump 24 hours with credit or debit card.

Crane Flat
9:00 a.m. to 5:00 p.m. Diesel available.
Pay at the pump 24 hours with credit or debit card.

El Portal
9:00 a.m. to noon and 2:00 p.m. to 5:00 p.m.
Diesel available. Pay at the pump 24 hours with credit or debit card.

Gifts, Books, & Apparel

YOSEMITE VILLAGE The Ansel Adams Gallery
9:00 a.m. to 5:00 p.m.

Yosemite Bookstore
Inside Visitor Center
9:00 a.m. to 5:00 p.m.

Village Store 8:00 a.m. to 8:00 p.m.

Habitat Yosemite
9:00 a.m. to 3:00 p.m. Sunday - Thursday
9:00 a.m. to 5:00 p.m. Friday & Saturday

Sport Shop 9:00 a.m. to 5:00 p.m.

YOSEMITE LODGE Gift/Grocery 8:00 a.m. to 8:00 p.m.
Nature Shop 11:00 a.m. to 6:00 p.m.

THE AHWAHNEE Gift Shop 8:00 a.m. to 10:00 p.m.
Sweet Shop 7:00 a.m. to 10:00 p.m.

CURRY VILLAGE Mountain Shop 9:00 a.m. to 5:00 p.m.
Gift/Grocery 8:00 a.m. to 6:00 p.m.

BADGER PASS Sports Shop 9:00 a.m. to 4:30 p.m.

WAWONA Pioneer Gift Shop/Grocery
8:00 a.m. to 6:00 p.m.

Groceries

Yosemite Lodge Gift/Grocery
8:00 a.m. to 8:00 p.m.

Village Store 8:00 a.m. to 8:00 p.m.

Degan's Delicatessen 7:00 a.m. to 5:00 p.m.

Curry Village Gift/Grocery
8:00 a.m. to 6:00 p.m.

Wawona Grocery Store 8:00 a.m. to 6:00 p.m.

Crane Flat 9:00 a.m. to 5:00 p.m.

El Portal Market 9:00 a.m. to 7:00 p.m.

Showers & Laundromat

SHOWERS Curry Village 24 hours

LAUNDROMAT Housekeeping Camp
8:00 a.m. to 10:00 p.m.

Recycling

Village Store Recycling Center
Noon to 4:00 p.m. Tuesday, Thursday, and Saturday

Post Offices

Main Post Office - Yosemite Village
Monday - Friday 8:30 a.m. to 5:00 p.m.
Saturday 10:00 a.m. to noon

Yosemite Lodge Post Office
Monday - Thursday 11:30 a.m. to 2:45 p.m.
Friday 11:30 a.m. to 4:30 p.m.

Wawona Post Office
Monday - Friday 9:00 a.m. to 5:00 p.m.
Saturday 9:00 a.m. to noon

El Portal Post Office
Monday - Friday 8:30 a.m. to 12:30 p.m.,
1:30 p.m. to 5:00 p.m.

Auto Service, Towing, and Repair (AAA)

Village Garage
8:00 a.m. to noon, 1:00 p.m. to 5:00 p.m.
Towing 24 hours. Propane available until 4:00 p.m.
209/372-8320

Service Organizations

Al-Anon
Wednesday 7:00 p.m. DNC General Office Building (Executive conference Room) Yosemite Village

Alcoholics Anonymous
Sunday 8:30 p.m.
Tuesday, and Thursday 7:30 p.m.
DNC General Office Building (Employee Training Center) Yosemite Village

Narcotics Anonymous
Saturday 8:00 p.m.
DNC General Office Building (Employee Training Center) Yosemite Village

Lions Club
Meets first and third Thursdays of each month at noon, The Ahwahnee.
Call 209/372-4475 for information.

Rotary International
Meets Thursdays for lunch at noon in The Ahwahnee Mural Room. Visiting Rotarian families and guests welcome. For meeting reservations or information, call 209/372-1401.

Religious Services

YOSEMITE COMMUNITY CHURCH
(Nondenominational Christian)
Pastor Brent Moore 209/372-4831

Yosemite Valley Chapel (year-round)
Worship Services
Sunday 9:15 a.m. (with Children's Church)
Thursday 7:00 p.m. (and bible study)

Mid-week Studies
Men's, women's and couples studies held during the week. Call Church for time and location.

ROMAN CATHOLIC
Rev. Raymond J. Duffy 209/372-4729
Mass in Yosemite Valley
Visitor Center West Auditorium
Sunday 10:00 a.m.

CHURCH OF CHRIST
Ron Skelton 209/379-2307
El Portal Chapel
Worship Service
Sunday 9:00 a.m.

CROSSWAY CHURCH
(Christian Protestant)
Pastor Steve Hughes 209/379-2428
Worship Service
Sunday 7:00 p.m. Yosemite Chapel
Men's Bible Study
Wednesday 7:00 p.m.
Women's Bible Study
Call for time and location

EL PORTAL COMMUNITY CHURCH
Pastor Russ Marsh 209/379-2255
El Portal Chapel
Worship Service
First and third Saturday 7:30 p.m.
Second, fourth, and fifth Sunday 10:30 a.m.

WAWONA CHRISTIAN FELLOWSHIP
Pastor David Adamcik 209/966-3039
Wawona Community Center
Worship Service
Sunday 9:00 a.m.
Women's Bible Study
Wednesday 1:00 p.m.

General Park Information

Emergency 911

Fire - Police - Medical Emergency:
Dial 911, 24 hours a day (from hotel room 9-911)

Information

Road and Weather General Park Information
209/372-0200 www.nps.gov/yose

Campground Reservations
800/436-7275 reservations.nps.gov

Ski/Snow Conditions
209/372-1000

Medical

Yosemite Medical Clinic
Emergency care: 24 hours daily

Drop-in and Urgent Care
Daily 8:00 a.m. to 7:00 p.m.

Scheduled Appointments
Monday - Friday 8:00 a.m. to 5:00 p.m.
Saturday 9:00 a.m. to Noon

Located on Ahwahnee Drive in Yosemite Valley, the clinic provides routine and emergency medical care for park employees, residents, and visitors. Experienced nursing staff, emergency physicians, nurse practitioner, and support staff on duty. Services include a limited pharmacy, lab, x-ray, and physical therapy. Services include a limited pharmacy, lab, x-ray, physical therapy, and Mountain Crisis Services for victims of domestic violence. 209/372-4637

Paramedic/Ambulance Service
24 hours daily

Dental Services
Adjacent to Medical Clinic
For hours, call 209/372-4200
If no answer, call 209/372-4637

Services For Disabled

The *Yosemite Accessibility Guide* is available at park entrance stations, visitor centers, and online at www.nps.gov/yose/trip/access.htm
TTYs are available inside the Valley Visitor Center, The Ahwahnee, Yosemite Lodge, and outside the Curry Village front desk.

Wheelchair rental available at Yosemite Medical Clinic, 209/372-4637.

Accommodations

For advanced reservations or information (rooms or activities), call 559/252-4848 (www.yosemitepark.com)
For availability on day of arrival, check at any front desk.

Bear Canister Rental

Available for \$5 per trip at the Yosemite Valley Visitor Center, Crane Flat Store, Wawona Grocery Store, and the Hetch Hetchy Entrance Station. Canisters may be rented or returned at any rental location in the park. Drop bins are available for after-hour returns, including the Yosemite Valley trailhead parking area, near Happy Isles.

Wilderness Permits

All wilderness centers are closed for the season. Anyone going overnight into Yosemite's backcountry must have a wilderness permit. You can self-register at one of the following locations: Yosemite Valley Visitor Center, Hill's Studio porch (near Wawona Hotel), Hetch Hetchy Entrance Station, Big Oak Flat Information Station, Tuolumne Meadows Ski Hut or Badger Pass A-frame building. All overnight trips leaving from Badger Pass must obtain a wilderness permit from the Badger Pass A-frame building.

Tioga Road is closed to all overnight parking. Bears can remain active throughout the winter. Visitors heading into Yosemite's wilderness areas are highly encouraged to use bear resistant food canisters.

Recreation

Conditions permitting.

YOSEMITE MOUNTAINEERING SCHOOL AND GUIDE SERVICE
Yosemite Mountaineering School and Guide Service offers lessons and guided climbing at all levels, overnight backpacking, and guided day hikes to spectacular areas of Yosemite Valley and the high country.

Badger Pass
Located in Cross Country Ski Center
8:30 a.m. to 4:30 p.m. 209/372-8444

BADGER PASS SKI AREA
Downhill ski area, rental shop, cross-country center, ski school, snow tubing, snow lift operation: 9:00 a.m. to 4:30 p.m. Call 209/372-1000 for conditions and information.

ICE SKATING RINK
Located at Curry Village, shuttle stops #13 and #21
209/372-8341
Monday - Friday
3:30 p.m. - 6:00 p.m.
7:00 p.m. - 9:30 p.m.
Saturday, Sunday, and holidays
8:30 a.m. - 11:00 a.m.
Noon - 2:30 p.m.
3:30 p.m. - 6:00 p.m.
7:00 p.m. - 9:30 p.m.

Tours

Yosemite Lodge Tour Desk
7:30 a.m. to 4:30 p.m., Sunday - Thursday
7:00 a.m. to 8:00 p.m., Friday - Saturday

SIGHTSEEING TOURS
Valley Floor Tour
This 26-mile, 2-hour tour departs at 10:00 a.m. and 2:00 p.m. daily from Yosemite Lodge in Yosemite Valley. Conditions permitting.

